



SECTION DETAILS

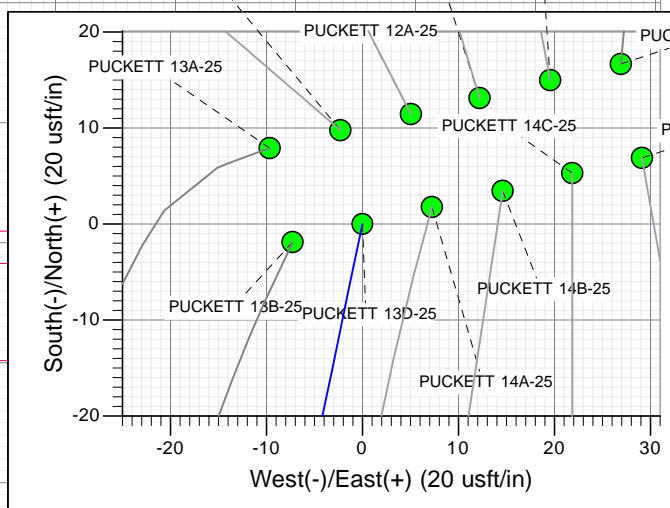
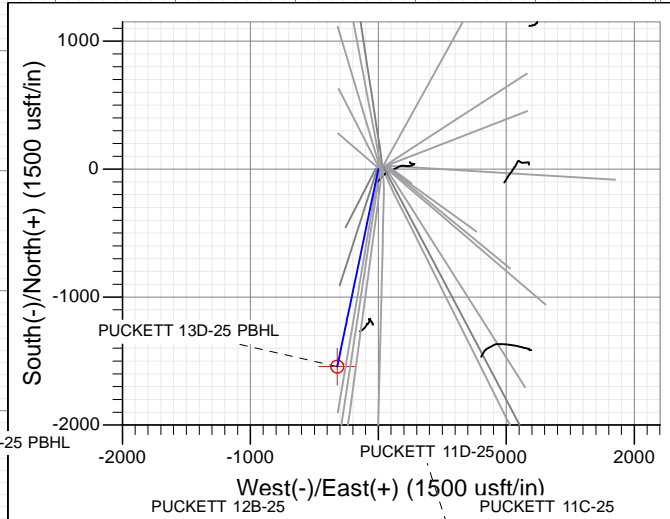
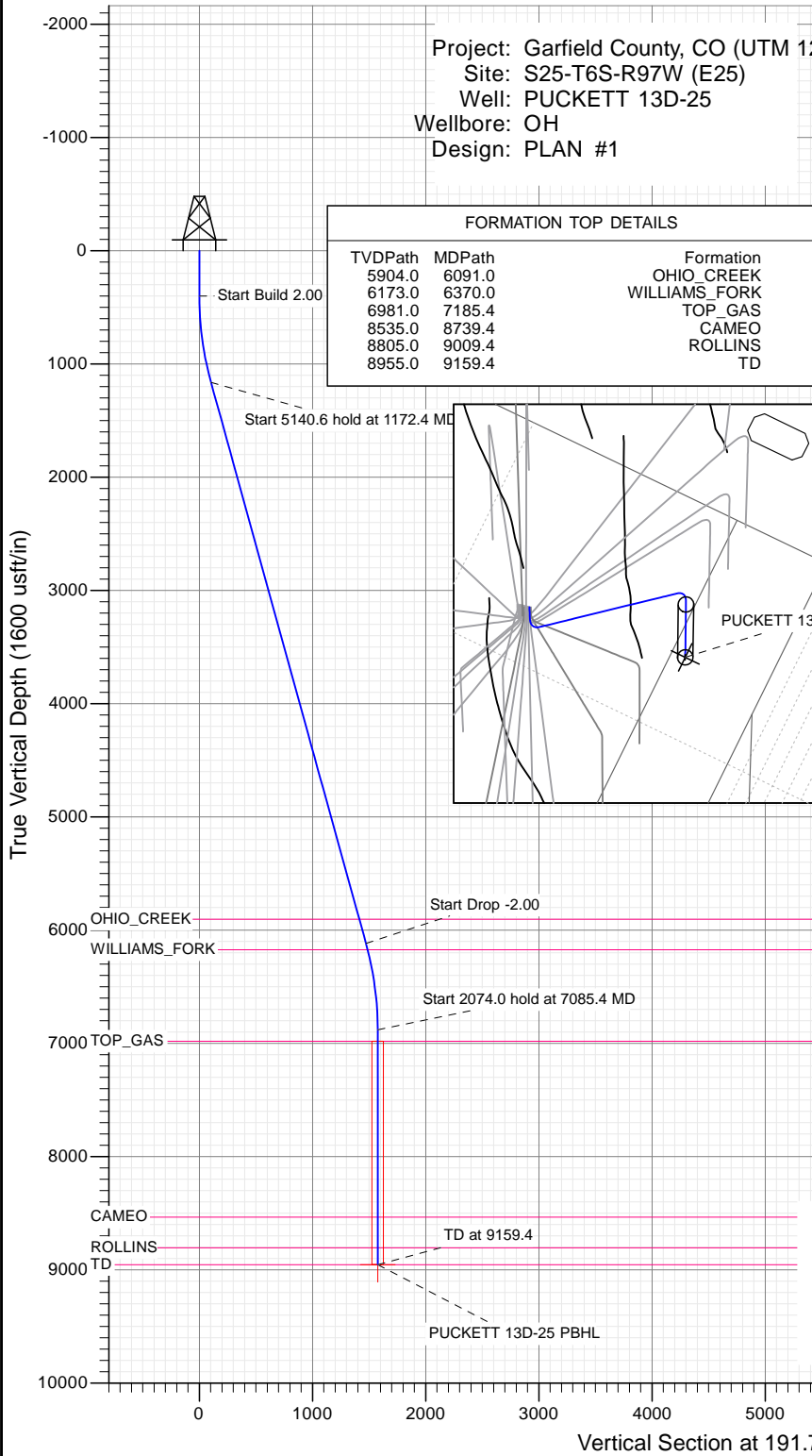
Sec	MD	Inc	Azi	TVD	+N/-S	+E/-W	Dleg	TFace	Vsect	Target
1	0.0	0.00	0.00	0.0	0.0	0.0	0.00	0.00	0.0	
2	400.0	0.00	0.00	400.0	0.0	0.0	0.00	0.00	0.0	
3	1172.4	15.45	191.76	1163.1	-101.3	-21.1	2.00	191.76	103.5	
4	6313.0	15.45	191.76	6117.9	-1441.9	-300.2	0.00	0.00	1472.8	
5	7085.4	0.00	0.00	6881.0	-1543.2	-321.3	2.00	180.00	1576.3	
6	9159.4	0.00	0.00	8955.0	-1543.2	-321.3	0.00	0.00	1576.3	PUCKETT 13D-25 PBHL

Project: Garfield County, CO (UTM 12
 Site: S25-T6S-R97W (E25)
 Well: PUCKETT 13D-25
 Wellbore: OH
 Design: PLAN #1

PLAN #1
 PUCKETT 13D-25
 15XXX; LR
 30 KB @ 8406.0usft
 Ground Level @ 8376.0
 NAD 1927 - Western US
 Well PUCKETT 13D-25, True North

Type	Target	Azimuth	Origin Type	N/S	E/W	From TVD
TD	No Target (Freehand)	191.76	Slot	0.0	0.0	0.0

Name	TVD	+N/-S	+E/-W	Latitude	Longitude
PUCKETT 13D-25 PBHL	8955.0	-1543.2	-321.3	39.490918	-108.176769



T M
 Azimuths to True North
 Magnetic North: 9.82°
 Magnetic Field
 Strength: 51888.5snT
 Dip Angle: 65.85°
 Date: 1/7/2016
 Model: HDGM

CASING DETAILS
 No casing data is available



WELL DETAILS: PUCKETT 13D-25

+N/-S	+E/-W	Northing	Ground Level:	8376.0	Latitude	Longitude
0.0	0.0	14354717.50	Easting	2437260.90	39.495153	-108.175631



Planning Report

Database:	USA EDM 5000 Multi Users DB	Local Co-ordinate Reference:	Well PUCKETT 13D-25
Company:	Caerus Oil & Gas	TVD Reference:	30' KB @ 8406.0usft
Project:	Garfield County, CO (UTM 12N)	MD Reference:	30' KB @ 8406.0usft
Site:	S25-T6S-R97W (E25)	North Reference:	True
Well:	PUCKETT 13D-25	Survey Calculation Method:	Minimum Curvature
Wellbore:	OH		
Design:	PLAN #1		

Project	Garfield County, CO (UTM 12N)		
Map System:	Universal Transverse Mercator (US Survey Feet)	System Datum:	Mean Sea Level
Geo Datum:	NAD 1927 - Western US		
Map Zone:	Zone 12N (114 W to 108 W)		

Site	S25-T6S-R97W (E25)				
Site Position:		Northing:	14,354,735.00 usft	Latitude:	39.495199
From:	Map	Easting:	2,437,287.30 usft	Longitude:	-108.175536
Position Uncertainty:	0.0 usft	Slot Radius:	13-3/16"	Grid Convergence:	1.80 °

Well	PUCKETT 13D-25					
Well Position	+N/-S	0.0 usft	Northing:	14,354,717.50 usft	Latitude:	39.495153
	+E/-W	0.0 usft	Easting:	2,437,260.90 usft	Longitude:	-108.175631
Position Uncertainty		0.0 usft	Wellhead Elevation:	0.0 usft	Ground Level:	8,376.0 usft

Wellbore	OH				
Magnetics	Model Name	Sample Date	Declination	Dip Angle	Field Strength
	HDGM	1/7/2016	(°) 9.82	(°) 65.85	(nT) 51,889

Design	PLAN #1			
Audit Notes:				
Version:	Phase:	PLAN	Tie On Depth:	0.0
Vertical Section:	Depth From (TVD)	+N/-S	+E/-W	Direction
	(usft)	(usft)	(usft)	(°)
	0.0	0.0	0.0	191.76

Plan Sections										
Measured Depth (usft)	Inclination (°)	Azimuth (°)	Vertical Depth (usft)	+N/-S (usft)	+E/-W (usft)	Dogleg Rate (°/100usft)	Build Rate (°/100usft)	Turn Rate (°/100usft)	TFO (°)	Target
0.0	0.00	0.00	0.0	0.0	0.0	0.00	0.00	0.00	0.00	
400.0	0.00	0.00	400.0	0.0	0.0	0.00	0.00	0.00	0.00	
1,172.4	15.45	191.76	1,163.1	-101.3	-21.1	2.00	2.00	0.00	191.76	
6,313.0	15.45	191.76	6,117.9	-1,441.9	-300.2	0.00	0.00	0.00	0.00	
7,085.4	0.00	0.00	6,881.0	-1,543.2	-321.3	2.00	-2.00	0.00	180.00	
9,159.4	0.00	0.00	8,955.0	-1,543.2	-321.3	0.00	0.00	0.00	0.00	PUCKETT 13D-25 PE

Planning Report

Database:	USA EDM 5000 Multi Users DB	Local Co-ordinate Reference:	Well PUCKETT 13D-25
Company:	Caerus Oil & Gas	TVD Reference:	30' KB @ 8406.0usft
Project:	Garfield County, CO (UTM 12N)	MD Reference:	30' KB @ 8406.0usft
Site:	S25-T6S-R97W (E25)	North Reference:	True
Well:	PUCKETT 13D-25	Survey Calculation Method:	Minimum Curvature
Wellbore:	OH		
Design:	PLAN #1		

Planned Survey									
Measured Depth (usft)	Inclination (°)	Azimuth (°)	Vertical Depth (usft)	+N/-S (usft)	+E/-W (usft)	Vertical Section (usft)	Dogleg Rate (°/100usft)	Build Rate (°/100u)	Comments / Formations
0.0	0.00	0.00	0.0	0.0	0.0	0.0	0.00	0.00	
100.0	0.00	0.00	100.0	0.0	0.0	0.0	0.00	0.00	
200.0	0.00	0.00	200.0	0.0	0.0	0.0	0.00	0.00	
300.0	0.00	0.00	300.0	0.0	0.0	0.0	0.00	0.00	
400.0	0.00	0.00	400.0	0.0	0.0	0.0	0.00	0.00	Start Build 2.00
500.0	2.00	191.76	500.0	-1.7	-0.4	1.7	2.00	2.00	
600.0	4.00	191.76	599.8	-6.8	-1.4	7.0	2.00	2.00	
700.0	6.00	191.76	699.5	-15.4	-3.2	15.7	2.00	2.00	
800.0	8.00	191.76	798.7	-27.3	-5.7	27.9	2.00	2.00	
900.0	10.00	191.76	897.5	-42.6	-8.9	43.5	2.00	2.00	
1,000.0	12.00	191.76	995.6	-61.3	-12.8	62.6	2.00	2.00	
1,100.0	14.00	191.76	1,093.1	-83.3	-17.3	85.1	2.00	2.00	
1,172.4	15.45	191.76	1,163.1	-101.3	-21.1	103.5	2.00	2.00	Start 5140.6 hold at 1172.4 MD
1,200.0	15.45	191.76	1,189.7	-108.5	-22.6	110.8	0.00	0.00	
1,300.0	15.45	191.76	1,286.1	-134.6	-28.0	137.5	0.00	0.00	
1,400.0	15.45	191.76	1,382.5	-160.7	-33.4	164.1	0.00	0.00	
1,500.0	15.45	191.76	1,478.8	-186.8	-38.9	190.8	0.00	0.00	
1,600.0	15.45	191.76	1,575.2	-212.8	-44.3	217.4	0.00	0.00	
1,700.0	15.45	191.76	1,671.6	-238.9	-49.7	244.0	0.00	0.00	
1,800.0	15.45	191.76	1,768.0	-265.0	-55.2	270.7	0.00	0.00	
1,900.0	15.45	191.76	1,864.4	-291.1	-60.6	297.3	0.00	0.00	
2,000.0	15.45	191.76	1,960.8	-317.1	-66.0	323.9	0.00	0.00	
2,100.0	15.45	191.76	2,057.2	-343.2	-71.5	350.6	0.00	0.00	
2,200.0	15.45	191.76	2,153.6	-369.3	-76.9	377.2	0.00	0.00	
2,300.0	15.45	191.76	2,249.9	-395.4	-82.3	403.9	0.00	0.00	
2,400.0	15.45	191.76	2,346.3	-421.5	-87.7	430.5	0.00	0.00	
2,500.0	15.45	191.76	2,442.7	-447.5	-93.2	457.1	0.00	0.00	
2,600.0	15.45	191.76	2,539.1	-473.6	-98.6	483.8	0.00	0.00	
2,700.0	15.45	191.76	2,635.5	-499.7	-104.0	510.4	0.00	0.00	
2,800.0	15.45	191.76	2,731.9	-525.8	-109.5	537.0	0.00	0.00	
2,900.0	15.45	191.76	2,828.3	-551.8	-114.9	563.7	0.00	0.00	
3,000.0	15.45	191.76	2,924.6	-577.9	-120.3	590.3	0.00	0.00	
3,100.0	15.45	191.76	3,021.0	-604.0	-125.7	616.9	0.00	0.00	
3,200.0	15.45	191.76	3,117.4	-630.1	-131.2	643.6	0.00	0.00	
3,300.0	15.45	191.76	3,213.8	-656.2	-136.6	670.2	0.00	0.00	
3,400.0	15.45	191.76	3,310.2	-682.2	-142.0	696.9	0.00	0.00	
3,500.0	15.45	191.76	3,406.6	-708.3	-147.5	723.5	0.00	0.00	
3,600.0	15.45	191.76	3,503.0	-734.4	-152.9	750.1	0.00	0.00	
3,700.0	15.45	191.76	3,599.4	-760.5	-158.3	776.8	0.00	0.00	
3,800.0	15.45	191.76	3,695.7	-786.5	-163.7	803.4	0.00	0.00	
3,900.0	15.45	191.76	3,792.1	-812.6	-169.2	830.0	0.00	0.00	
4,000.0	15.45	191.76	3,888.5	-838.7	-174.6	856.7	0.00	0.00	
4,100.0	15.45	191.76	3,984.9	-864.8	-180.0	883.3	0.00	0.00	
4,200.0	15.45	191.76	4,081.3	-890.8	-185.5	909.9	0.00	0.00	
4,300.0	15.45	191.76	4,177.7	-916.9	-190.9	936.6	0.00	0.00	
4,400.0	15.45	191.76	4,274.1	-943.0	-196.3	963.2	0.00	0.00	
4,500.0	15.45	191.76	4,370.5	-969.1	-201.7	989.9	0.00	0.00	
4,600.0	15.45	191.76	4,466.8	-995.2	-207.2	1,016.5	0.00	0.00	
4,700.0	15.45	191.76	4,563.2	-1,021.2	-212.6	1,043.1	0.00	0.00	
4,800.0	15.45	191.76	4,659.6	-1,047.3	-218.0	1,069.8	0.00	0.00	
4,900.0	15.45	191.76	4,756.0	-1,073.4	-223.5	1,096.4	0.00	0.00	
5,000.0	15.45	191.76	4,852.4	-1,099.5	-228.9	1,123.0	0.00	0.00	

Planning Report

Database:	USA EDM 5000 Multi Users DB	Local Co-ordinate Reference:	Well PUCKETT 13D-25
Company:	Caerus Oil & Gas	TVD Reference:	30' KB @ 8406.0usft
Project:	Garfield County, CO (UTM 12N)	MD Reference:	30' KB @ 8406.0usft
Site:	S25-T6S-R97W (E25)	North Reference:	True
Well:	PUCKETT 13D-25	Survey Calculation Method:	Minimum Curvature
Wellbore:	OH		
Design:	PLAN #1		

Planned Survey

Measured Depth (usft)	Inclination (°)	Azimuth (°)	Vertical Depth (usft)	+N/-S (usft)	+E/-W (usft)	Vertical Section (usft)	Dogleg Rate (°/100usft)	Build Rate (°/100u)	Comments / Formations
5,100.0	15.45	191.76	4,948.8	-1,125.5	-234.3	1,149.7	0.00	0.00	
5,200.0	15.45	191.76	5,045.2	-1,151.6	-239.7	1,176.3	0.00	0.00	
5,300.0	15.45	191.76	5,141.6	-1,177.7	-245.2	1,203.0	0.00	0.00	
5,400.0	15.45	191.76	5,237.9	-1,203.8	-250.6	1,229.6	0.00	0.00	
5,500.0	15.45	191.76	5,334.3	-1,229.9	-256.0	1,256.2	0.00	0.00	
5,600.0	15.45	191.76	5,430.7	-1,255.9	-261.5	1,282.9	0.00	0.00	
5,700.0	15.45	191.76	5,527.1	-1,282.0	-266.9	1,309.5	0.00	0.00	
5,800.0	15.45	191.76	5,623.5	-1,308.1	-272.3	1,336.1	0.00	0.00	
5,900.0	15.45	191.76	5,719.9	-1,334.2	-277.7	1,362.8	0.00	0.00	
6,000.0	15.45	191.76	5,816.3	-1,360.2	-283.2	1,389.4	0.00	0.00	
6,091.0	15.45	191.76	5,904.0	-1,384.0	-288.1	1,413.7	0.00	0.00	OHIO_CREEK
6,100.0	15.45	191.76	5,912.7	-1,386.3	-288.6	1,416.0	0.00	0.00	
6,200.0	15.45	191.76	6,009.0	-1,412.4	-294.0	1,442.7	0.00	0.00	
6,300.0	15.45	191.76	6,105.4	-1,438.5	-299.5	1,469.3	0.00	0.00	
6,313.0	15.45	191.76	6,117.9	-1,441.9	-300.2	1,472.8	0.00	0.00	Start Drop -2.00
6,370.0	14.31	191.76	6,173.0	-1,456.2	-303.1	1,487.4	2.00	-2.00	WILLIAMS_FORK
6,400.0	13.71	191.76	6,202.2	-1,463.3	-304.6	1,494.7	2.00	-2.00	
6,500.0	11.71	191.76	6,299.7	-1,484.8	-309.1	1,516.7	2.00	-2.00	
6,600.0	9.71	191.76	6,398.0	-1,503.0	-312.9	1,535.2	2.00	-2.00	
6,700.0	7.71	191.76	6,496.8	-1,517.8	-316.0	1,550.4	2.00	-2.00	
6,800.0	5.71	191.76	6,596.1	-1,529.3	-318.4	1,562.1	2.00	-2.00	
6,900.0	3.71	191.76	6,695.8	-1,537.3	-320.0	1,570.3	2.00	-2.00	
7,000.0	1.71	191.76	6,795.6	-1,541.9	-321.0	1,575.0	2.00	-2.00	
7,085.4	0.00	0.00	6,881.0	-1,543.2	-321.3	1,576.3	2.00	-2.00	Start 2074.0 hold at 7085.4 MD
7,100.0	0.00	0.00	6,895.6	-1,543.2	-321.3	1,576.3	0.00	0.00	
7,185.4	0.00	0.00	6,981.0	-1,543.2	-321.3	1,576.3	0.00	0.00	TOP_GAS
7,200.0	0.00	0.00	6,995.6	-1,543.2	-321.3	1,576.3	0.00	0.00	
7,300.0	0.00	0.00	7,095.6	-1,543.2	-321.3	1,576.3	0.00	0.00	
7,400.0	0.00	0.00	7,195.6	-1,543.2	-321.3	1,576.3	0.00	0.00	
7,500.0	0.00	0.00	7,295.6	-1,543.2	-321.3	1,576.3	0.00	0.00	
7,600.0	0.00	0.00	7,395.6	-1,543.2	-321.3	1,576.3	0.00	0.00	
7,700.0	0.00	0.00	7,495.6	-1,543.2	-321.3	1,576.3	0.00	0.00	
7,800.0	0.00	0.00	7,595.6	-1,543.2	-321.3	1,576.3	0.00	0.00	
7,900.0	0.00	0.00	7,695.6	-1,543.2	-321.3	1,576.3	0.00	0.00	
8,000.0	0.00	0.00	7,795.6	-1,543.2	-321.3	1,576.3	0.00	0.00	
8,100.0	0.00	0.00	7,895.6	-1,543.2	-321.3	1,576.3	0.00	0.00	
8,200.0	0.00	0.00	7,995.6	-1,543.2	-321.3	1,576.3	0.00	0.00	
8,300.0	0.00	0.00	8,095.6	-1,543.2	-321.3	1,576.3	0.00	0.00	
8,400.0	0.00	0.00	8,195.6	-1,543.2	-321.3	1,576.3	0.00	0.00	
8,500.0	0.00	0.00	8,295.6	-1,543.2	-321.3	1,576.3	0.00	0.00	
8,600.0	0.00	0.00	8,395.6	-1,543.2	-321.3	1,576.3	0.00	0.00	
8,700.0	0.00	0.00	8,495.6	-1,543.2	-321.3	1,576.3	0.00	0.00	
8,739.4	0.00	0.00	8,535.0	-1,543.2	-321.3	1,576.3	0.00	0.00	CAMEO
8,800.0	0.00	0.00	8,595.6	-1,543.2	-321.3	1,576.3	0.00	0.00	
8,900.0	0.00	0.00	8,695.6	-1,543.2	-321.3	1,576.3	0.00	0.00	
9,000.0	0.00	0.00	8,795.6	-1,543.2	-321.3	1,576.3	0.00	0.00	
9,009.4	0.00	0.00	8,805.0	-1,543.2	-321.3	1,576.3	0.00	0.00	ROLLINS
9,100.0	0.00	0.00	8,895.6	-1,543.2	-321.3	1,576.3	0.00	0.00	
9,159.4	0.00	0.00	8,955.0	-1,543.2	-321.3	1,576.3	0.00	0.00	TD at 9159.4 - TD

Planning Report

Database:	USA EDM 5000 Multi Users DB	Local Co-ordinate Reference:	Well PUCKETT 13D-25
Company:	Caerus Oil & Gas	TVD Reference:	30' KB @ 8406.0usft
Project:	Garfield County, CO (UTM 12N)	MD Reference:	30' KB @ 8406.0usft
Site:	S25-T6S-R97W (E25)	North Reference:	True
Well:	PUCKETT 13D-25	Survey Calculation Method:	Minimum Curvature
Wellbore:	OH		
Design:	PLAN #1		

Targets									
Target Name	Dip Angle	Dip Dir.	TVD	+N/-S	+E/-W	Northing	Easting	Latitude	Longitude
- hit/miss target	(°)	(°)	(usft)	(usft)	(usft)	(usft)	(usft)		
- Shape									
PUCKETT 13D-25 PBHI	0.00	0.00	8,955.0	-1,543.2	-321.3	14,353,165.00	2,436,988.20	39.490918	-108.176769
- plan hits target center - Circle (radius 50.0)									

Formations						
Measured Depth	Vertical Depth	Name	Lithology	Dip	Dip Direction	
(usft)	(usft)			(°)	(°)	
6,091.0	5,904.0	OHIO_CREEK				
6,370.0	6,173.0	WILLIAMS_FORK				
7,185.4	6,981.0	TOP_GAS				
8,739.4	8,535.0	CAMEO				
9,009.4	8,805.0	ROLLINS				
9,159.4	8,955.0	TD				

Plan Annotations					
Measured Depth	Vertical Depth	Local Coordinates		Comment	
(usft)	(usft)	+N/-S	+E/-W		
		(usft)	(usft)		
400.0	400.0	0.0	0.0	Start Build 2.00	
1,172.4	1,163.1	-101.3	-21.1	Start 5140.6 hold at 1172.4 MD	
6,313.0	6,117.9	-1,441.9	-300.2	Start Drop -2.00	
7,085.4	6,881.0	-1,543.2	-321.3	Start 2074.0 hold at 7085.4 MD	
9,159.4	8,955.0	-1,543.2	-321.3	TD at 9159.4	