



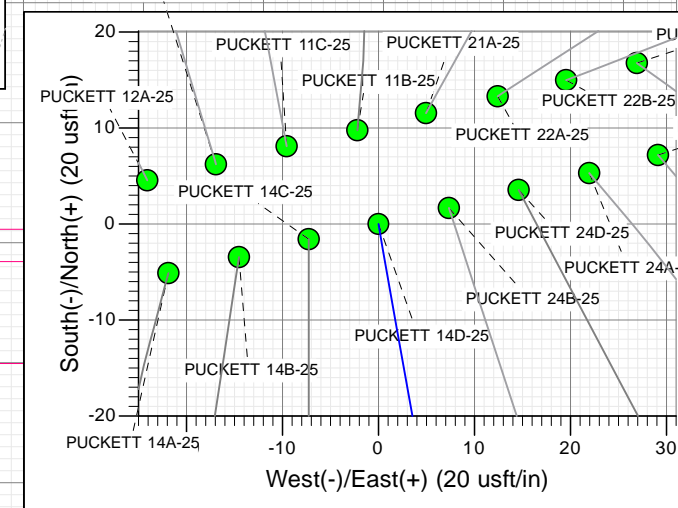
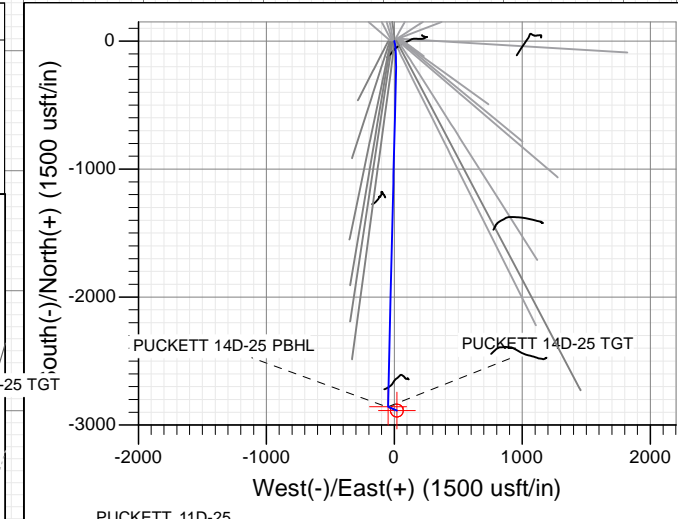
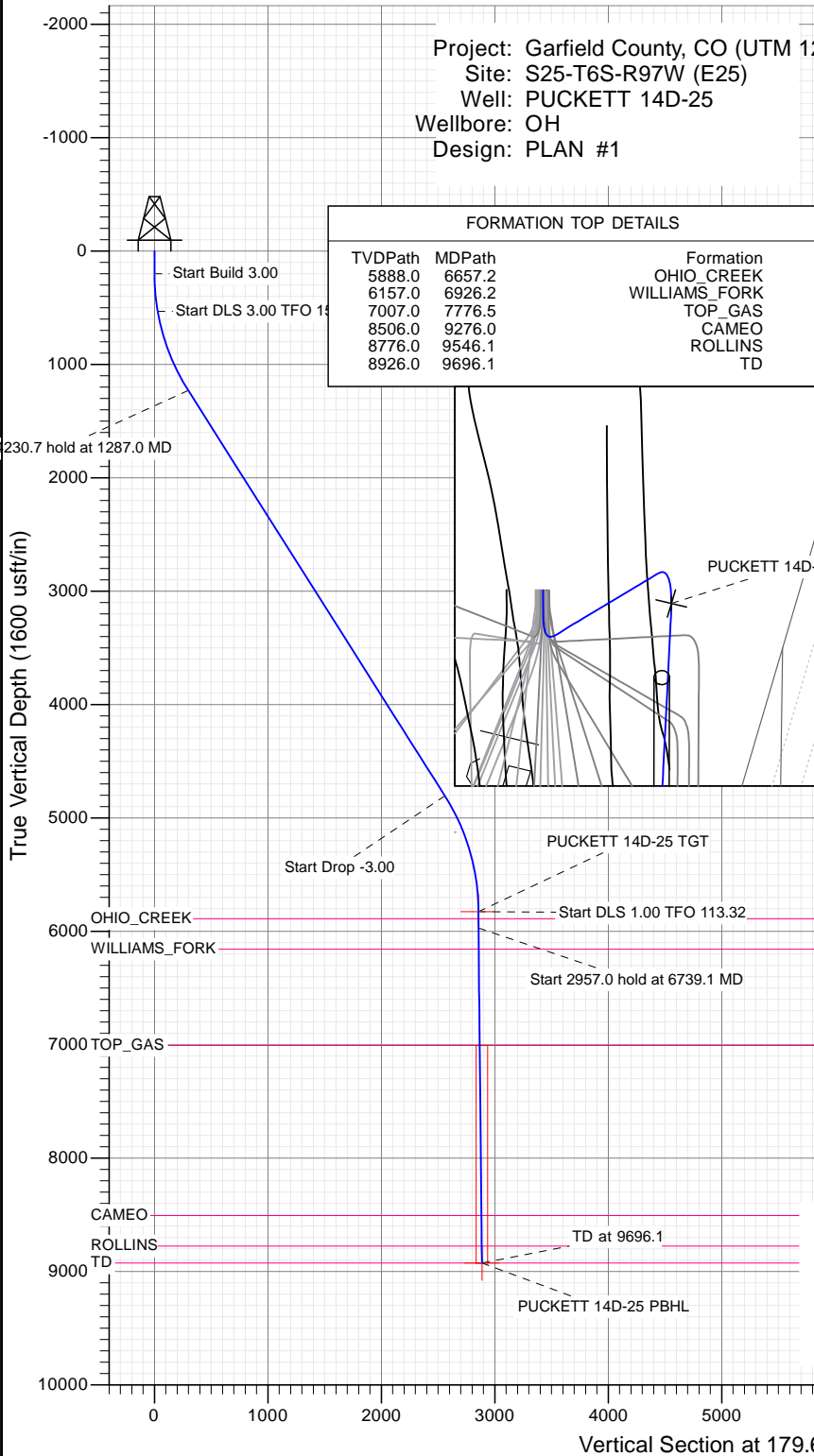
SECTION DETAILS

Sec	MD	Inc	Azi	TVD	+N/-S	+E/-W	Dleg	TFace	V Sect	Target
1	0.0	0.00	0.00	0.0	0.0	0.0	0.00	0.00	0.0	
2	200.0	0.00	0.00	200.0	0.0	0.0	0.00	0.00	0.0	
3	533.3	10.00	170.00	531.6	-28.6	5.0	3.00	170.00	28.6	
4	1287.0	32.34	181.38	1230.2	-298.0	11.6	3.00	15.93	298.1	
5	5517.7	32.34	181.38	4804.9	-2560.3	-42.9	0.00	0.00	2560.0	
6	6595.6	0.00	0.00	5826.4	-2856.4	-50.0	3.00	180.00	2856.0	PUCKETT 14D-25 TGT
7	6739.1	1.44	113.32	5970.0	-2857.1	-48.3	1.00	113.32	2856.7	
8	9696.1	1.44	113.32	8926.0	-2886.4	19.7	0.00	0.00	2886.5	PUCKETT 14D-25 PBHL

Project: Garfield County, CO (UTM 12
 Site: S25-T6S-R97W (E25)
 Well: PUCKETT 14D-25
 Wellbore: OH
 Design: PLAN #1

PLAN #1
 PUCKETT 14D-25
 15XXX LR
 30' KB @ 8406.0ust
 Ground Level @ 8376.0
 NAD 1927 - Western US
 Well PUCKETT 14D-25, True North

Type	Target	Azimuth	Origin	N/S	E/W	From
TD	No Target (Freehand)	179.61	Type Slot	0.0	0.0	TVD 0.0
Name		TVD	+N/-S	+E/-W	Latitude	Longitude
PUCKETT 14D-25 TGT		5826.4	-2856.4	-50.0	39.487333	-108.175705
PUCKETT 14D-25 PBHL		8926.0	-2886.4	19.7	39.487250	-108.175458



TM

Azimuths to True North
 Magnetic North: 9.82°

Magnetic Field
 Strength: 51888.5snT
 Dip Angle: 65.85°
 Date: 1/7/2016
 Model: HDGM

CASING DETAILS
 No casing data is available



WELL DETAILS: PUCKETT 14D-25

		Ground Level: 8376.0	
+N/-S	+E/-W	Northing	Easting
0.0	0.0	14354725.30	2437289.80
		Latitude	Longitude
		39.495172	-108.175528



Planning Report

Database:	USA EDM 5000 Multi Users DB	Local Co-ordinate Reference:	Well PUCKETT 14D-25
Company:	Caerus Oil & Gas	TVD Reference:	30' KB @ 8406.0usft
Project:	Garfield County, CO (UTM 12N)	MD Reference:	30' KB @ 8406.0usft
Site:	S25-T6S-R97W (E25)	North Reference:	True
Well:	PUCKETT 14D-25	Survey Calculation Method:	Minimum Curvature
Wellbore:	OH		
Design:	PLAN #1		

Project	Garfield County, CO (UTM 12N)		
Map System:	Universal Transverse Mercator (US Survey Feet)	System Datum:	Mean Sea Level
Geo Datum:	NAD 1927 - Western US		
Map Zone:	Zone 12N (114 W to 108 W)		

Site	S25-T6S-R97W (E25)				
Site Position:		Northing:	14,354,735.00 usft	Latitude:	39.495199
From:	Map	Easting:	2,437,287.30 usft	Longitude:	-108.175536
Position Uncertainty:	0.0 usft	Slot Radius:	13-3/16"	Grid Convergence:	1.80 °

Well	PUCKETT 14D-25					
Well Position	+N/-S	0.0 usft	Northing:	14,354,725.30 usft	Latitude:	39.495172
	+E/-W	0.0 usft	Easting:	2,437,289.80 usft	Longitude:	-108.175528
Position Uncertainty		0.0 usft	Wellhead Elevation:	0.0 usft	Ground Level:	8,376.0 usft

Wellbore	OH				
Magnetics	Model Name	Sample Date	Declination	Dip Angle	Field Strength
			(°)	(°)	(nT)
	HDGM	1/7/2016	9.82	65.85	51,889

Design	PLAN #1			
Audit Notes:				
Version:	Phase:	PLAN	Tie On Depth:	0.0
Vertical Section:	Depth From (TVD)	+N/-S	+E/-W	Direction
	(usft)	(usft)	(usft)	(°)
	0.0	0.0	0.0	179.61

Plan Sections										
Measured Depth (usft)	Inclination (°)	Azimuth (°)	Vertical Depth (usft)	+N/-S (usft)	+E/-W (usft)	Dogleg Rate (°/100usft)	Build Rate (°/100usft)	Turn Rate (°/100usft)	TFO (°)	Target
0.0	0.00	0.00	0.0	0.0	0.0	0.00	0.00	0.00	0.00	
200.0	0.00	0.00	200.0	0.0	0.0	0.00	0.00	0.00	0.00	
533.3	10.00	170.00	531.6	-28.6	5.0	3.00	3.00	0.00	170.00	
1,287.0	32.34	181.38	1,230.2	-298.0	11.6	3.00	2.96	1.51	15.93	
5,517.7	32.34	181.38	4,804.9	-2,560.3	-42.9	0.00	0.00	0.00	0.00	
6,595.6	0.00	0.00	5,826.4	-2,856.4	-50.0	3.00	-3.00	0.00	180.00	PUCKETT 14D-25 TC
6,739.1	1.44	113.32	5,970.0	-2,857.1	-48.3	1.00	1.00	78.94	113.32	
9,696.1	1.44	113.32	8,926.0	-2,886.4	19.7	0.00	0.00	0.00	0.00	PUCKETT 14D-25 PE

Planning Report

Database:	USA EDM 5000 Multi Users DB	Local Co-ordinate Reference:	Well PUCKETT 14D-25
Company:	Caerus Oil & Gas	TVD Reference:	30' KB @ 8406.0usft
Project:	Garfield County, CO (UTM 12N)	MD Reference:	30' KB @ 8406.0usft
Site:	S25-T6S-R97W (E25)	North Reference:	True
Well:	PUCKETT 14D-25	Survey Calculation Method:	Minimum Curvature
Wellbore:	OH		
Design:	PLAN #1		

Planned Survey									
Measured Depth (usft)	Inclination (°)	Azimuth (°)	Vertical Depth (usft)	+N/-S (usft)	+E/-W (usft)	Vertical Section (usft)	Dogleg Rate (°/100usft)	Build Rate (°/100u)	Comments / Formations
0.0	0.00	0.00	0.0	0.0	0.0	0.0	0.00	0.00	
100.0	0.00	0.00	100.0	0.0	0.0	0.0	0.00	0.00	
200.0	0.00	0.00	200.0	0.0	0.0	0.0	0.00	0.00	Start Build 3.00
300.0	3.00	170.00	300.0	-2.6	0.5	2.6	3.00	3.00	
400.0	6.00	170.00	399.6	-10.3	1.8	10.3	3.00	3.00	
500.0	9.00	170.00	498.8	-23.2	4.1	23.2	3.00	3.00	
533.3	10.00	170.00	531.6	-28.6	5.0	28.6	3.00	3.00	Start DLS 3.00 TFO 15.93
600.0	11.94	172.66	597.1	-41.1	6.9	41.2	3.00	2.90	
700.0	14.87	175.35	694.4	-64.2	9.3	64.2	3.00	2.94	
800.0	17.83	177.17	790.3	-92.2	11.1	92.3	3.00	2.96	
900.0	20.80	178.48	884.7	-125.3	12.3	125.4	3.00	2.97	
1,000.0	23.77	179.48	977.2	-163.2	13.0	163.3	3.00	2.98	
1,100.0	26.75	180.27	1,067.6	-205.9	13.0	206.0	3.00	2.98	
1,200.0	29.74	180.91	1,155.7	-253.2	12.5	253.3	3.00	2.98	
1,287.0	32.34	181.38	1,230.2	-298.0	11.6	298.1	3.00	2.99	Start 4230.7 hold at 1287.0 MD
1,300.0	32.34	181.38	1,241.2	-305.0	11.5	305.0	0.00	0.00	
1,400.0	32.34	181.38	1,325.7	-358.5	10.2	358.5	0.00	0.00	
1,500.0	32.34	181.38	1,410.2	-411.9	8.9	412.0	0.00	0.00	
1,600.0	32.34	181.38	1,494.7	-465.4	7.6	465.4	0.00	0.00	
1,700.0	32.34	181.38	1,579.2	-518.9	6.3	518.9	0.00	0.00	
1,800.0	32.34	181.38	1,663.7	-572.3	5.0	572.4	0.00	0.00	
1,900.0	32.34	181.38	1,748.2	-625.8	3.7	625.8	0.00	0.00	
2,000.0	32.34	181.38	1,832.7	-679.3	2.4	679.3	0.00	0.00	
2,100.0	32.34	181.38	1,917.2	-732.8	1.2	732.8	0.00	0.00	
2,200.0	32.34	181.38	2,001.7	-786.2	-0.1	786.2	0.00	0.00	
2,300.0	32.34	181.38	2,086.1	-839.7	-1.4	839.7	0.00	0.00	
2,400.0	32.34	181.38	2,170.6	-893.2	-2.7	893.1	0.00	0.00	
2,500.0	32.34	181.38	2,255.1	-946.7	-4.0	946.6	0.00	0.00	
2,600.0	32.34	181.38	2,339.6	-1,000.1	-5.3	1,000.1	0.00	0.00	
2,700.0	32.34	181.38	2,424.1	-1,053.6	-6.6	1,053.5	0.00	0.00	
2,800.0	32.34	181.38	2,508.6	-1,107.1	-7.9	1,107.0	0.00	0.00	
2,900.0	32.34	181.38	2,593.1	-1,160.5	-9.1	1,160.5	0.00	0.00	
3,000.0	32.34	181.38	2,677.6	-1,214.0	-10.4	1,213.9	0.00	0.00	
3,100.0	32.34	181.38	2,762.1	-1,267.5	-11.7	1,267.4	0.00	0.00	
3,200.0	32.34	181.38	2,846.6	-1,321.0	-13.0	1,320.8	0.00	0.00	
3,300.0	32.34	181.38	2,931.1	-1,374.4	-14.3	1,374.3	0.00	0.00	
3,400.0	32.34	181.38	3,015.6	-1,427.9	-15.6	1,427.8	0.00	0.00	
3,500.0	32.34	181.38	3,100.1	-1,481.4	-16.9	1,481.2	0.00	0.00	
3,600.0	32.34	181.38	3,184.5	-1,534.9	-18.2	1,534.7	0.00	0.00	
3,700.0	32.34	181.38	3,269.0	-1,588.3	-19.5	1,588.2	0.00	0.00	
3,800.0	32.34	181.38	3,353.5	-1,641.8	-20.7	1,641.6	0.00	0.00	
3,900.0	32.34	181.38	3,438.0	-1,695.3	-22.0	1,695.1	0.00	0.00	
4,000.0	32.34	181.38	3,522.5	-1,748.7	-23.3	1,748.5	0.00	0.00	
4,100.0	32.34	181.38	3,607.0	-1,802.2	-24.6	1,802.0	0.00	0.00	
4,200.0	32.34	181.38	3,691.5	-1,855.7	-25.9	1,855.5	0.00	0.00	
4,300.0	32.34	181.38	3,776.0	-1,909.2	-27.2	1,908.9	0.00	0.00	
4,400.0	32.34	181.38	3,860.5	-1,962.6	-28.5	1,962.4	0.00	0.00	
4,500.0	32.34	181.38	3,945.0	-2,016.1	-29.8	2,015.9	0.00	0.00	
4,600.0	32.34	181.38	4,029.5	-2,069.6	-31.0	2,069.3	0.00	0.00	
4,700.0	32.34	181.38	4,114.0	-2,123.1	-32.3	2,122.8	0.00	0.00	
4,800.0	32.34	181.38	4,198.5	-2,176.5	-33.6	2,176.2	0.00	0.00	
4,900.0	32.34	181.38	4,283.0	-2,230.0	-34.9	2,229.7	0.00	0.00	

Planning Report

Database:	USA EDM 5000 Multi Users DB	Local Co-ordinate Reference:	Well PUCKETT 14D-25
Company:	Caerus Oil & Gas	TVD Reference:	30' KB @ 8406.0usft
Project:	Garfield County, CO (UTM 12N)	MD Reference:	30' KB @ 8406.0usft
Site:	S25-T6S-R97W (E25)	North Reference:	True
Well:	PUCKETT 14D-25	Survey Calculation Method:	Minimum Curvature
Wellbore:	OH		
Design:	PLAN #1		

Planned Survey									
Measured Depth (usft)	Inclination (°)	Azimuth (°)	Vertical Depth (usft)	+N/-S (usft)	+E/-W (usft)	Vertical Section (usft)	Dogleg Rate (°/100usft)	Build Rate (°/100u)	Comments / Formations
5,000.0	32.34	181.38	4,367.4	-2,283.5	-36.2	2,283.2	0.00	0.00	
5,100.0	32.34	181.38	4,451.9	-2,336.9	-37.5	2,336.6	0.00	0.00	
5,200.0	32.34	181.38	4,536.4	-2,390.4	-38.8	2,390.1	0.00	0.00	
5,300.0	32.34	181.38	4,620.9	-2,443.9	-40.1	2,443.6	0.00	0.00	
5,400.0	32.34	181.38	4,705.4	-2,497.4	-41.4	2,497.0	0.00	0.00	
5,500.0	32.34	181.38	4,789.9	-2,550.8	-42.6	2,550.5	0.00	0.00	
5,517.7	32.34	181.38	4,804.9	-2,560.3	-42.9	2,560.0	0.00	0.00	Start Drop -3.00
5,600.0	29.87	181.38	4,875.3	-2,602.8	-43.9	2,602.4	3.00	-3.00	
5,700.0	26.87	181.38	4,963.3	-2,650.3	-45.0	2,649.9	3.00	-3.00	
5,800.0	23.87	181.38	5,053.7	-2,693.1	-46.1	2,692.7	3.00	-3.00	
5,900.0	20.87	181.38	5,146.1	-2,731.2	-47.0	2,730.8	3.00	-3.00	
6,000.0	17.87	181.38	5,240.5	-2,764.3	-47.8	2,763.9	3.00	-3.00	
6,100.0	14.87	181.38	5,336.4	-2,792.5	-48.5	2,792.1	3.00	-3.00	
6,200.0	11.87	181.38	5,433.7	-2,815.6	-49.0	2,815.2	3.00	-3.00	
6,300.0	8.87	181.38	5,532.0	-2,833.6	-49.5	2,833.2	3.00	-3.00	
6,400.0	5.87	181.38	5,631.2	-2,846.4	-49.8	2,846.0	3.00	-3.00	
6,500.0	2.87	181.38	5,730.9	-2,854.0	-49.9	2,853.6	3.00	-3.00	
6,595.6	0.00	0.00	5,826.4	-2,856.4	-50.0	2,856.0	3.00	-3.00	Start DLS 1.00 TFO 113.32
6,600.0	0.04	113.32	5,830.8	-2,856.4	-50.0	2,856.0	1.00	1.00	
6,657.2	0.62	113.32	5,888.0	-2,856.5	-49.7	2,856.1	1.00	1.00	OHIO_CREEK
6,700.0	1.04	113.32	5,930.8	-2,856.8	-49.1	2,856.4	1.00	1.00	
6,739.1	1.44	113.32	5,970.0	-2,857.1	-48.3	2,856.7	1.00	1.00	Start 2957.0 hold at 6739.1 MD
6,800.0	1.44	113.32	6,030.8	-2,857.7	-46.9	2,857.3	0.00	0.00	
6,900.0	1.44	113.32	6,130.8	-2,858.7	-44.6	2,858.3	0.00	0.00	
6,926.2	1.44	113.32	6,157.0	-2,859.0	-44.0	2,858.6	0.00	0.00	WILLIAMS_FORK
7,000.0	1.44	113.32	6,230.7	-2,859.7	-42.3	2,859.3	0.00	0.00	
7,100.0	1.44	113.32	6,330.7	-2,860.7	-40.0	2,860.4	0.00	0.00	
7,200.0	1.44	113.32	6,430.7	-2,861.7	-37.7	2,861.4	0.00	0.00	
7,300.0	1.44	113.32	6,530.7	-2,862.7	-35.4	2,862.4	0.00	0.00	
7,400.0	1.44	113.32	6,630.6	-2,863.7	-33.1	2,863.4	0.00	0.00	
7,500.0	1.44	113.32	6,730.6	-2,864.7	-30.8	2,864.4	0.00	0.00	
7,600.0	1.44	113.32	6,830.6	-2,865.6	-28.5	2,865.4	0.00	0.00	
7,700.0	1.44	113.32	6,930.5	-2,866.6	-26.2	2,866.4	0.00	0.00	
7,776.5	1.44	113.32	7,007.0	-2,867.4	-24.5	2,867.2	0.00	0.00	TOP_GAS
7,800.0	1.44	113.32	7,030.5	-2,867.6	-23.9	2,867.4	0.00	0.00	
7,900.0	1.44	113.32	7,130.5	-2,868.6	-21.6	2,868.4	0.00	0.00	
8,000.0	1.44	113.32	7,230.4	-2,869.6	-19.3	2,869.4	0.00	0.00	
8,100.0	1.44	113.32	7,330.4	-2,870.6	-17.0	2,870.4	0.00	0.00	
8,200.0	1.44	113.32	7,430.4	-2,871.6	-14.7	2,871.4	0.00	0.00	
8,300.0	1.44	113.32	7,530.3	-2,872.6	-12.4	2,872.4	0.00	0.00	
8,400.0	1.44	113.32	7,630.3	-2,873.6	-10.1	2,873.4	0.00	0.00	
8,500.0	1.44	113.32	7,730.3	-2,874.6	-7.8	2,874.5	0.00	0.00	
8,600.0	1.44	113.32	7,830.2	-2,875.6	-5.5	2,875.5	0.00	0.00	
8,700.0	1.44	113.32	7,930.2	-2,876.6	-3.2	2,876.5	0.00	0.00	
8,800.0	1.44	113.32	8,030.2	-2,877.6	-0.9	2,877.5	0.00	0.00	
8,900.0	1.44	113.32	8,130.2	-2,878.5	1.4	2,878.5	0.00	0.00	
9,000.0	1.44	113.32	8,230.1	-2,879.5	3.7	2,879.5	0.00	0.00	
9,100.0	1.44	113.32	8,330.1	-2,880.5	6.0	2,880.5	0.00	0.00	
9,200.0	1.44	113.32	8,430.1	-2,881.5	8.3	2,881.5	0.00	0.00	
9,276.0	1.44	113.32	8,506.0	-2,882.3	10.0	2,882.3	0.00	0.00	CAMEO
9,300.0	1.44	113.32	8,530.0	-2,882.5	10.6	2,882.5	0.00	0.00	
9,400.0	1.44	113.32	8,630.0	-2,883.5	12.9	2,883.5	0.00	0.00	

Planning Report

Database:	USA EDM 5000 Multi Users DB	Local Co-ordinate Reference:	Well PUCKETT 14D-25
Company:	Caerus Oil & Gas	TVD Reference:	30' KB @ 8406.0usft
Project:	Garfield County, CO (UTM 12N)	MD Reference:	30' KB @ 8406.0usft
Site:	S25-T6S-R97W (E25)	North Reference:	True
Well:	PUCKETT 14D-25	Survey Calculation Method:	Minimum Curvature
Wellbore:	OH		
Design:	PLAN #1		

Planned Survey									
Measured Depth (usft)	Inclination (°)	Azimuth (°)	Vertical Depth (usft)	+N/-S (usft)	+E/-W (usft)	Vertical Section (usft)	Dogleg Rate (°/100usft)	Build Rate (°/100u)	Comments / Formations
9,500.0	1.44	113.32	8,730.0	-2,884.5	15.2	2,884.5	0.00	0.00	
9,546.1	1.44	113.32	8,776.0	-2,884.9	16.2	2,885.0	0.00	0.00	ROLLINS
9,600.0	1.44	113.32	8,829.9	-2,885.5	17.5	2,885.5	0.00	0.00	
9,696.1	1.44	113.32	8,926.0	-2,886.4	19.7	2,886.5	0.00	0.00	TD at 9696.1 - TD

Targets										
Target Name	Dip Angle (°)	Dip Dir. (°)	TVD (usft)	+N/-S (usft)	+E/-W (usft)	Northing (usft)	Easting (usft)	Latitude	Longitude	
PUCKETT 14D-25 TGT - hit/miss target - Shape	0.00	0.00	5,826.4	-2,856.4	-50.0	14,351,868.74	2,437,329.42	39.487333	-108.175705	
PUCKETT 14D-25 PBHI - plan hits target center - Circle (radius 50.0)	0.00	0.00	8,926.0	-2,886.4	19.7	14,351,840.90	2,437,400.00	39.487250	-108.175458	

Formations						
Measured Depth (usft)	Vertical Depth (usft)	Name	Lithology	Dip (°)	Dip Direction (°)	
6,657.2	5,888.0	OHIO_CREEK				
6,926.2	6,157.0	WILLIAMS_FORK				
7,776.5	7,007.0	TOP_GAS				
9,276.0	8,506.0	CAMEO				
9,546.1	8,776.0	ROLLINS				
9,696.1	8,926.0	TD				

Plan Annotations					
Measured Depth (usft)	Vertical Depth (usft)	+N/-S (usft)	+E/-W (usft)	Comment	
200.0	200.0	0.0	0.0	Start Build 3.00	
533.3	531.6	-28.6	5.0	Start DLS 3.00 TFO 15.93	
1,287.0	1,230.2	-298.0	11.6	Start 4230.7 hold at 1287.0 MD	
5,517.7	4,804.9	-2,560.3	-42.9	Start Drop -3.00	
6,595.6	5,826.4	-2,856.4	-50.0	Start DLS 1.00 TFO 113.32	
6,739.1	5,970.0	-2,857.1	-48.3	Start 2957.0 hold at 6739.1 MD	
9,696.1	8,926.0	-2,886.4	19.7	TD at 9696.1	