



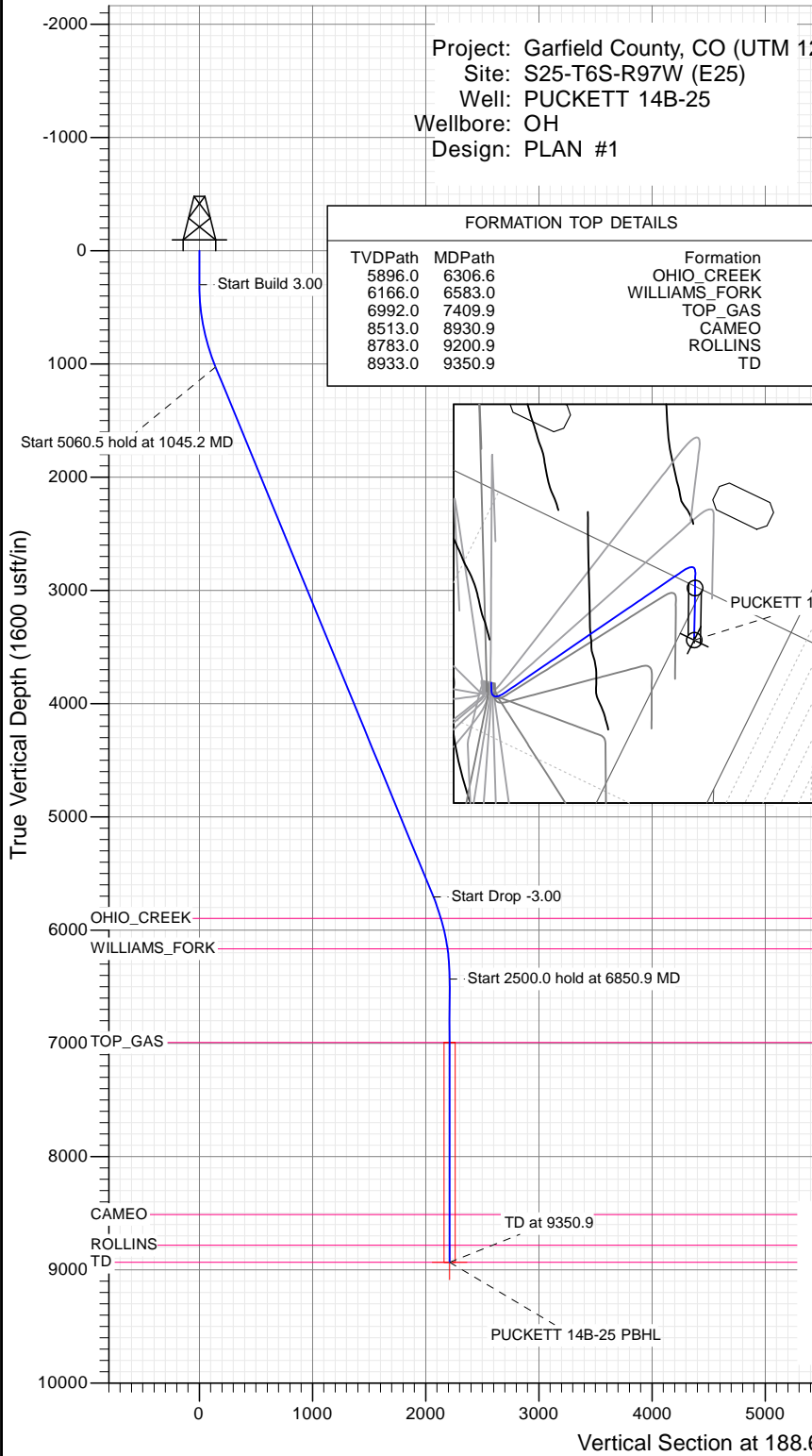
SECTION DETAILS

Sec	MD	Inc	Azi	TVD	+N/-S	+E/-W	Dleg	TFace	Vsect	Target
1	0.0	0.00	0.00	0.0	0.0	0.0	0.00	0.00	0.0	
2	300.0	0.00	0.00	300.0	0.0	0.0	0.00	0.00	0.0	
3	1045.2	22.36	188.61	1026.5	-141.9	-21.5	3.00	188.61	143.6	
4	6105.7	22.36	188.61	5706.5	-2045.1	-309.6	0.00	0.00	2068.4	
5	6850.9	0.00	0.00	6433.0	-2187.1	-331.1	3.00	180.00	2212.0	
6	9350.9	0.00	0.00	8933.0	-2187.1	-331.1	0.00	0.00	2212.0	PUCKETT 14B-25 PBHL

Project: Garfield County, CO (UTM 12
 Site: S25-T6S-R97W (E25)
 Well: PUCKETT 14B-25
 Wellbore: OH
 Design: PLAN #1

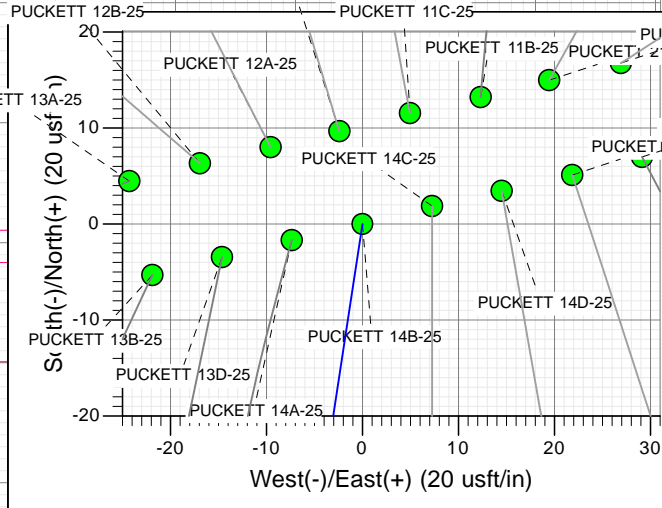
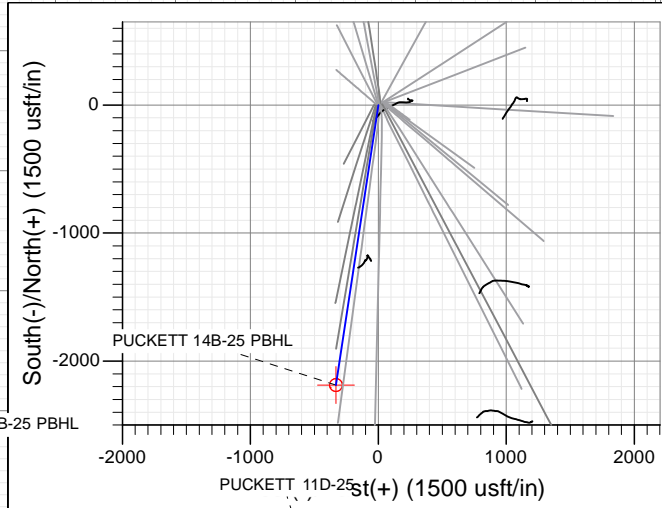
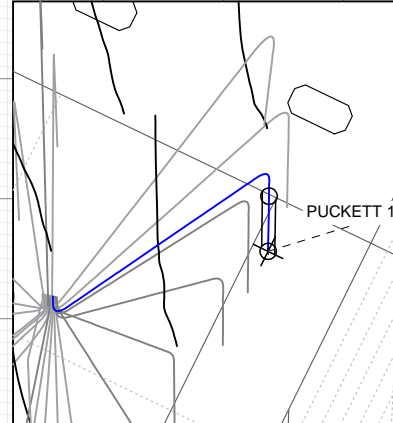
PLAN #1
 PUCKETT 14B-25
 15XXX LR
 30 KB @ 8406.0ust
 Ground Level @ 8376.0
 NAD 1927 - Western US
 Well PUCKETT 14B-25, True North

Type	Target	Origin	N/S	E/W	From	
TD	No Target (Freehand)	Slot	0.0	0.0	TVD	
Name		TVD	+N/-S	+E/-W	Latitude	Longitude
PUCKETT 14B-25 PBHL		8933.0	-2187.1	-331.1	39.489160	-108.176752



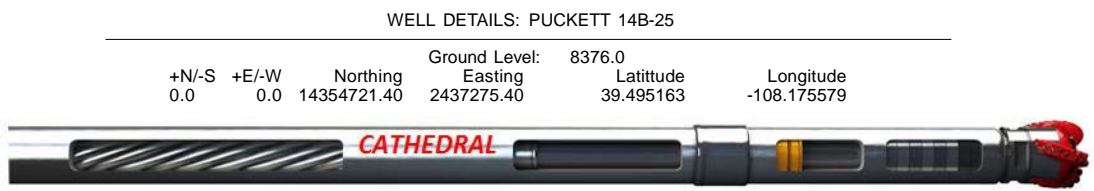
FORMATION TOP DETAILS

TVDPath	MDPath	Formation
5896.0	6306.6	OHIO_CREEK
6166.0	6583.0	WILLIAMS_FORK
6992.0	7409.9	TOP_GAS
8513.0	8930.9	CAMEO
8783.0	9200.9	ROLLINS
8933.0	9350.9	TD



↑ T
 M
 Azimuths to True North
 Magnetic North: 9.82°
 Magnetic Field
 Strength: 51888.5snT
 Dip Angle: 65.85°
 Date: 1/7/2016
 Model: HDGM

CASING DETAILS
 No casing data is available



WELL DETAILS: PUCKETT 14B-25

		Ground Level: 8376.0	
+N/-S	+E/-W	Northing	Easting
0.0	0.0	14354721.40	2437275.40
		Latitude	Longitude
		39.495163	-108.175579

Planning Report

Database:	USA EDM 5000 Multi Users DB	Local Co-ordinate Reference:	Well PUCKETT 14B-25
Company:	Caerus Oil & Gas	TVD Reference:	30' KB @ 8406.0usft
Project:	Garfield County, CO (UTM 12N)	MD Reference:	30' KB @ 8406.0usft
Site:	S25-T6S-R97W (E25)	North Reference:	True
Well:	PUCKETT 14B-25	Survey Calculation Method:	Minimum Curvature
Wellbore:	OH		
Design:	PLAN #1		

Project	Garfield County, CO (UTM 12N)		
Map System:	Universal Transverse Mercator (US Survey Feet)	System Datum:	Mean Sea Level
Geo Datum:	NAD 1927 - Western US		
Map Zone:	Zone 12N (114 W to 108 W)		

Site	S25-T6S-R97W (E25)				
Site Position:		Northing:	14,354,735.00 usft	Latitude:	39.495199
From:	Map	Easting:	2,437,287.30 usft	Longitude:	-108.175536
Position Uncertainty:	0.0 usft	Slot Radius:	13-3/16"	Grid Convergence:	1.80 °

Well	PUCKETT 14B-25					
Well Position	+N/-S	0.0 usft	Northing:	14,354,721.40 usft	Latitude:	39.495163
	+E/-W	0.0 usft	Easting:	2,437,275.40 usft	Longitude:	-108.175579
Position Uncertainty		0.0 usft	Wellhead Elevation:	0.0 usft	Ground Level:	8,376.0 usft

Wellbore	OH				
Magnetics	Model Name	Sample Date	Declination	Dip Angle	Field Strength
	HDGM	1/7/2016	(°) 9.82	(°) 65.85	(nT) 51,889

Design	PLAN #1			
Audit Notes:				
Version:	Phase:	PLAN	Tie On Depth:	0.0
Vertical Section:	Depth From (TVD)	+N/-S	+E/-W	Direction
	(usft)	(usft)	(usft)	(°)
	0.0	0.0	0.0	188.61

Plan Sections										
Measured Depth (usft)	Inclination (°)	Azimuth (°)	Vertical Depth (usft)	+N/-S (usft)	+E/-W (usft)	Dogleg Rate (°/100usft)	Build Rate (°/100usft)	Turn Rate (°/100usft)	TFO (°)	Target
0.0	0.00	0.00	0.0	0.0	0.0	0.00	0.00	0.00	0.00	
300.0	0.00	0.00	300.0	0.0	0.0	0.00	0.00	0.00	0.00	
1,045.2	22.36	188.61	1,026.5	-141.9	-21.5	3.00	3.00	0.00	188.61	
6,105.7	22.36	188.61	5,706.5	-2,045.1	-309.6	0.00	0.00	0.00	0.00	
6,850.9	0.00	0.00	6,433.0	-2,187.1	-331.1	3.00	-3.00	0.00	180.00	
9,350.9	0.00	0.00	8,933.0	-2,187.1	-331.1	0.00	0.00	0.00	0.00	PUCKETT 14B-25 PE

Planning Report

Database:	USA EDM 5000 Multi Users DB	Local Co-ordinate Reference:	Well PUCKETT 14B-25
Company:	Caerus Oil & Gas	TVD Reference:	30' KB @ 8406.0usft
Project:	Garfield County, CO (UTM 12N)	MD Reference:	30' KB @ 8406.0usft
Site:	S25-T6S-R97W (E25)	North Reference:	True
Well:	PUCKETT 14B-25	Survey Calculation Method:	Minimum Curvature
Wellbore:	OH		
Design:	PLAN #1		

Planned Survey									
Measured Depth (usft)	Inclination (°)	Azimuth (°)	Vertical Depth (usft)	+N/-S (usft)	+E/-W (usft)	Vertical Section (usft)	Dogleg Rate (°/100usft)	Build Rate (°/100u)	Comments / Formations
0.0	0.00	0.00	0.0	0.0	0.0	0.0	0.00	0.00	
100.0	0.00	0.00	100.0	0.0	0.0	0.0	0.00	0.00	
200.0	0.00	0.00	200.0	0.0	0.0	0.0	0.00	0.00	
300.0	0.00	0.00	300.0	0.0	0.0	0.0	0.00	0.00	Start Build 3.00
400.0	3.00	188.61	400.0	-2.6	-0.4	2.6	3.00	3.00	
500.0	6.00	188.61	499.6	-10.3	-1.6	10.5	3.00	3.00	
600.0	9.00	188.61	598.8	-23.2	-3.5	23.5	3.00	3.00	
700.0	12.00	188.61	697.1	-41.3	-6.2	41.7	3.00	3.00	
800.0	15.00	188.61	794.3	-64.3	-9.7	65.1	3.00	3.00	
900.0	18.00	188.61	890.2	-92.4	-14.0	93.5	3.00	3.00	
1,000.0	21.00	188.61	984.4	-125.4	-19.0	126.9	3.00	3.00	
1,045.2	22.36	188.61	1,026.5	-141.9	-21.5	143.6	3.00	3.00	Start 5060.5 hold at 1045.2 MD
1,100.0	22.36	188.61	1,077.1	-162.5	-24.6	164.4	0.00	0.00	
1,200.0	22.36	188.61	1,169.6	-200.2	-30.3	202.4	0.00	0.00	
1,300.0	22.36	188.61	1,262.1	-237.8	-36.0	240.5	0.00	0.00	
1,400.0	22.36	188.61	1,354.6	-275.4	-41.7	278.5	0.00	0.00	
1,500.0	22.36	188.61	1,447.0	-313.0	-47.4	316.5	0.00	0.00	
1,600.0	22.36	188.61	1,539.5	-350.6	-53.1	354.6	0.00	0.00	
1,700.0	22.36	188.61	1,632.0	-388.2	-58.8	392.6	0.00	0.00	
1,800.0	22.36	188.61	1,724.5	-425.8	-64.5	430.7	0.00	0.00	
1,900.0	22.36	188.61	1,817.0	-463.4	-70.1	468.7	0.00	0.00	
2,000.0	22.36	188.61	1,909.5	-501.0	-75.8	506.7	0.00	0.00	
2,100.0	22.36	188.61	2,001.9	-538.6	-81.5	544.8	0.00	0.00	
2,200.0	22.36	188.61	2,094.4	-576.2	-87.2	582.8	0.00	0.00	
2,300.0	22.36	188.61	2,186.9	-613.9	-92.9	620.8	0.00	0.00	
2,400.0	22.36	188.61	2,279.4	-651.5	-98.6	658.9	0.00	0.00	
2,500.0	22.36	188.61	2,371.9	-689.1	-104.3	696.9	0.00	0.00	
2,600.0	22.36	188.61	2,464.4	-726.7	-110.0	735.0	0.00	0.00	
2,700.0	22.36	188.61	2,556.8	-764.3	-115.7	773.0	0.00	0.00	
2,800.0	22.36	188.61	2,649.3	-801.9	-121.4	811.0	0.00	0.00	
2,900.0	22.36	188.61	2,741.8	-839.5	-127.1	849.1	0.00	0.00	
3,000.0	22.36	188.61	2,834.3	-877.1	-132.8	887.1	0.00	0.00	
3,100.0	22.36	188.61	2,926.8	-914.7	-138.5	925.1	0.00	0.00	
3,200.0	22.36	188.61	3,019.3	-952.3	-144.2	963.2	0.00	0.00	
3,300.0	22.36	188.61	3,111.7	-989.9	-149.8	1,001.2	0.00	0.00	
3,400.0	22.36	188.61	3,204.2	-1,027.6	-155.5	1,039.3	0.00	0.00	
3,500.0	22.36	188.61	3,296.7	-1,065.2	-161.2	1,077.3	0.00	0.00	
3,600.0	22.36	188.61	3,389.2	-1,102.8	-166.9	1,115.3	0.00	0.00	
3,700.0	22.36	188.61	3,481.7	-1,140.4	-172.6	1,153.4	0.00	0.00	
3,800.0	22.36	188.61	3,574.2	-1,178.0	-178.3	1,191.4	0.00	0.00	
3,900.0	22.36	188.61	3,666.6	-1,215.6	-184.0	1,229.5	0.00	0.00	
4,000.0	22.36	188.61	3,759.1	-1,253.2	-189.7	1,267.5	0.00	0.00	
4,100.0	22.36	188.61	3,851.6	-1,290.8	-195.4	1,305.5	0.00	0.00	
4,200.0	22.36	188.61	3,944.1	-1,328.4	-201.1	1,343.6	0.00	0.00	
4,300.0	22.36	188.61	4,036.6	-1,366.0	-206.8	1,381.6	0.00	0.00	
4,400.0	22.36	188.61	4,129.1	-1,403.6	-212.5	1,419.6	0.00	0.00	
4,500.0	22.36	188.61	4,221.5	-1,441.3	-218.2	1,457.7	0.00	0.00	
4,600.0	22.36	188.61	4,314.0	-1,478.9	-223.9	1,495.7	0.00	0.00	
4,700.0	22.36	188.61	4,406.5	-1,516.5	-229.5	1,533.8	0.00	0.00	
4,800.0	22.36	188.61	4,499.0	-1,554.1	-235.2	1,571.8	0.00	0.00	
4,900.0	22.36	188.61	4,591.5	-1,591.7	-240.9	1,609.8	0.00	0.00	
5,000.0	22.36	188.61	4,684.0	-1,629.3	-246.6	1,647.9	0.00	0.00	

Planning Report

Database:	USA EDM 5000 Multi Users DB	Local Co-ordinate Reference:	Well PUCKETT 14B-25
Company:	Caerus Oil & Gas	TVD Reference:	30' KB @ 8406.0usft
Project:	Garfield County, CO (UTM 12N)	MD Reference:	30' KB @ 8406.0usft
Site:	S25-T6S-R97W (E25)	North Reference:	True
Well:	PUCKETT 14B-25	Survey Calculation Method:	Minimum Curvature
Wellbore:	OH		
Design:	PLAN #1		

Planned Survey									
Measured Depth (usft)	Inclination (°)	Azimuth (°)	Vertical Depth (usft)	+N/-S (usft)	+E/-W (usft)	Vertical Section (usft)	Dogleg Rate (°/100usft)	Build Rate (°/100u)	Comments / Formations
5,100.0	22.36	188.61	4,776.4	-1,666.9	-252.3	1,685.9	0.00	0.00	
5,200.0	22.36	188.61	4,868.9	-1,704.5	-258.0	1,723.9	0.00	0.00	
5,300.0	22.36	188.61	4,961.4	-1,742.1	-263.7	1,762.0	0.00	0.00	
5,400.0	22.36	188.61	5,053.9	-1,779.7	-269.4	1,800.0	0.00	0.00	
5,500.0	22.36	188.61	5,146.4	-1,817.4	-275.1	1,838.1	0.00	0.00	
5,600.0	22.36	188.61	5,238.9	-1,855.0	-280.8	1,876.1	0.00	0.00	
5,700.0	22.36	188.61	5,331.3	-1,892.6	-286.5	1,914.1	0.00	0.00	
5,800.0	22.36	188.61	5,423.8	-1,930.2	-292.2	1,952.2	0.00	0.00	
5,900.0	22.36	188.61	5,516.3	-1,967.8	-297.9	1,990.2	0.00	0.00	
6,000.0	22.36	188.61	5,608.8	-2,005.4	-303.6	2,028.2	0.00	0.00	
6,100.0	22.36	188.61	5,701.3	-2,043.0	-309.3	2,066.3	0.00	0.00	
6,105.7	22.36	188.61	5,706.5	-2,045.1	-309.6	2,068.4	0.00	0.00	Start Drop -3.00
6,200.0	19.53	188.61	5,794.6	-2,078.5	-314.6	2,102.2	3.00	-3.00	
6,300.0	16.53	188.61	5,889.7	-2,109.1	-319.2	2,133.1	3.00	-3.00	
6,306.6	16.33	188.61	5,896.0	-2,110.9	-319.5	2,135.0	3.00	-3.00	OHIO_CREEK
6,400.0	13.53	188.61	5,986.3	-2,134.7	-323.1	2,159.0	3.00	-3.00	
6,500.0	10.53	188.61	6,084.0	-2,155.3	-326.2	2,179.9	3.00	-3.00	
6,583.0	8.04	188.61	6,166.0	-2,168.5	-328.3	2,193.3	3.00	-3.00	WILLIAMS_FORK
6,600.0	7.53	188.61	6,182.8	-2,170.8	-328.6	2,195.5	3.00	-3.00	
6,700.0	4.53	188.61	6,282.2	-2,181.2	-330.2	2,206.0	3.00	-3.00	
6,800.0	1.53	188.61	6,382.1	-2,186.4	-331.0	2,211.3	3.00	-3.00	
6,850.9	0.00	0.00	6,433.0	-2,187.1	-331.1	2,212.0	3.00	-3.00	Start 2500.0 hold at 6850.9 MD
6,900.0	0.00	0.00	6,482.1	-2,187.1	-331.1	2,212.0	0.00	0.00	
7,000.0	0.00	0.00	6,582.1	-2,187.1	-331.1	2,212.0	0.00	0.00	
7,100.0	0.00	0.00	6,682.1	-2,187.1	-331.1	2,212.0	0.00	0.00	
7,200.0	0.00	0.00	6,782.1	-2,187.1	-331.1	2,212.0	0.00	0.00	
7,300.0	0.00	0.00	6,882.1	-2,187.1	-331.1	2,212.0	0.00	0.00	
7,400.0	0.00	0.00	6,982.1	-2,187.1	-331.1	2,212.0	0.00	0.00	
7,409.9	0.00	0.00	6,992.0	-2,187.1	-331.1	2,212.0	0.00	0.00	TOP_GAS
7,500.0	0.00	0.00	7,082.1	-2,187.1	-331.1	2,212.0	0.00	0.00	
7,600.0	0.00	0.00	7,182.1	-2,187.1	-331.1	2,212.0	0.00	0.00	
7,700.0	0.00	0.00	7,282.1	-2,187.1	-331.1	2,212.0	0.00	0.00	
7,800.0	0.00	0.00	7,382.1	-2,187.1	-331.1	2,212.0	0.00	0.00	
7,900.0	0.00	0.00	7,482.1	-2,187.1	-331.1	2,212.0	0.00	0.00	
8,000.0	0.00	0.00	7,582.1	-2,187.1	-331.1	2,212.0	0.00	0.00	
8,100.0	0.00	0.00	7,682.1	-2,187.1	-331.1	2,212.0	0.00	0.00	
8,200.0	0.00	0.00	7,782.1	-2,187.1	-331.1	2,212.0	0.00	0.00	
8,300.0	0.00	0.00	7,882.1	-2,187.1	-331.1	2,212.0	0.00	0.00	
8,400.0	0.00	0.00	7,982.1	-2,187.1	-331.1	2,212.0	0.00	0.00	
8,500.0	0.00	0.00	8,082.1	-2,187.1	-331.1	2,212.0	0.00	0.00	
8,600.0	0.00	0.00	8,182.1	-2,187.1	-331.1	2,212.0	0.00	0.00	
8,700.0	0.00	0.00	8,282.1	-2,187.1	-331.1	2,212.0	0.00	0.00	
8,800.0	0.00	0.00	8,382.1	-2,187.1	-331.1	2,212.0	0.00	0.00	
8,900.0	0.00	0.00	8,482.1	-2,187.1	-331.1	2,212.0	0.00	0.00	
8,930.9	0.00	0.00	8,513.0	-2,187.1	-331.1	2,212.0	0.00	0.00	CAMEO
9,000.0	0.00	0.00	8,582.1	-2,187.1	-331.1	2,212.0	0.00	0.00	
9,100.0	0.00	0.00	8,682.1	-2,187.1	-331.1	2,212.0	0.00	0.00	
9,200.0	0.00	0.00	8,782.1	-2,187.1	-331.1	2,212.0	0.00	0.00	
9,200.9	0.00	0.00	8,783.0	-2,187.1	-331.1	2,212.0	0.00	0.00	ROLLINS
9,300.0	0.00	0.00	8,882.1	-2,187.1	-331.1	2,212.0	0.00	0.00	
9,350.9	0.00	0.00	8,933.0	-2,187.1	-331.1	2,212.0	0.00	0.00	TD at 9350.9 - TD

Planning Report

Database:	USA EDM 5000 Multi Users DB	Local Co-ordinate Reference:	Well PUCKETT 14B-25
Company:	Caerus Oil & Gas	TVD Reference:	30' KB @ 8406.0usft
Project:	Garfield County, CO (UTM 12N)	MD Reference:	30' KB @ 8406.0usft
Site:	S25-T6S-R97W (E25)	North Reference:	True
Well:	PUCKETT 14B-25	Survey Calculation Method:	Minimum Curvature
Wellbore:	OH		
Design:	PLAN #1		

Targets									
Target Name	Dip Angle	Dip Dir.	TVD	+N/-S	+E/-W	Northing	Easting	Latitude	Longitude
- hit/miss target	(°)	(°)	(usft)	(usft)	(usft)	(usft)	(usft)		
- Shape									
PUCKETT 14B-25 PBHL - plan hits target center - Circle (radius 50.0)	0.00	0.00	8,933.0	-2,187.1	-331.1	14,352,525.00	2,437,013.10	39.489160	-108.176752

Formations						
Measured Depth	Vertical Depth	Name	Lithology	Dip	Dip Direction	
(usft)	(usft)			(°)	(°)	
6,306.6	5,896.0	OHIO_CREEK				
6,583.0	6,166.0	WILLIAMS_FORK				
7,409.9	6,992.0	TOP_GAS				
8,930.9	8,513.0	CAMEO				
9,200.9	8,783.0	ROLLINS				
9,350.9	8,933.0	TD				

Plan Annotations					
Measured Depth	Vertical Depth	Local Coordinates		Comment	
(usft)	(usft)	+N/-S	+E/-W		
		(usft)	(usft)		
300.0	300.0	0.0	0.0	Start Build 3.00	
1,045.2	1,026.5	-141.9	-21.5	Start 5060.5 hold at 1045.2 MD	
6,105.7	5,706.5	-2,045.1	-309.6	Start Drop -3.00	
6,850.9	6,433.0	-2,187.1	-331.1	Start 2500.0 hold at 6850.9 MD	
9,350.9	8,933.0	-2,187.1	-331.1	TD at 9350.9	