

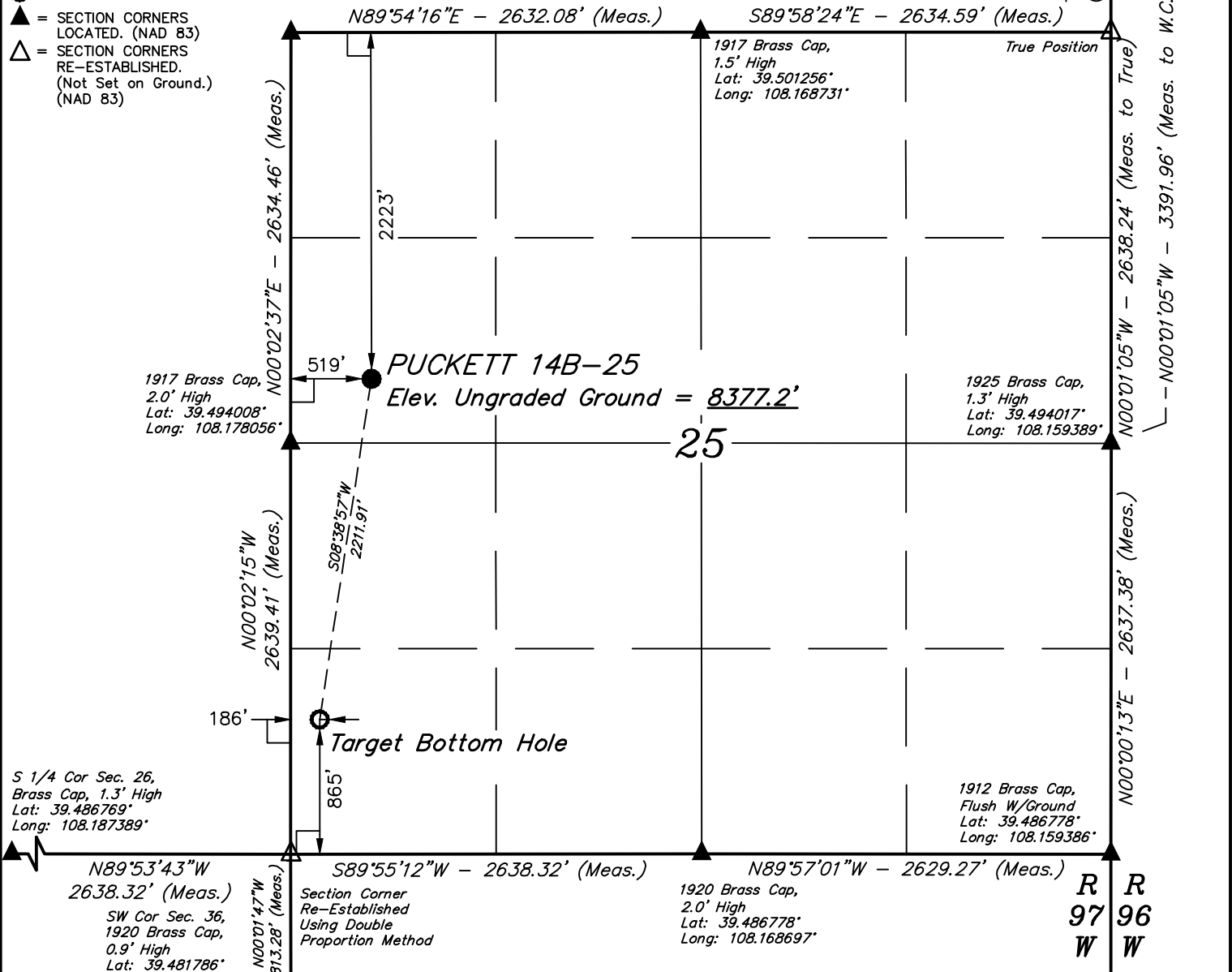
LEGEND:

- └─┘ = 90° SYMBOL
- = PROPOSED WELLHEAD.
- = TARGET BOTTOM HOLE.
- ▲ = SECTION CORNERS LOCATED. (NAD 83)
- △ = SECTION CORNERS RE-ESTABLISHED. (Not Set on Ground.) (NAD 83)

1917 Brass Cap,
0.6' High, Steel Post
Lat: 39.501239'
Long: 108.178056'

W.C. 1912 Brass
Cap, 1.5' High
Lat: 39.503325'
Long: 108.159400'

T6S, R97W, 6th P.M.



NAD 83 (TARGET BOTTOM HOLE)	NAD 83 (SURFACE LOCATION)
LATITUDE = 39°29'20.90" (39.489139)	LATITUDE = 39°29'42.51" (39.495142)
LONGITUDE = 108°10'38.60" (108.177389)	LONGITUDE = 108°10'34.38" (108.176217)
NAD 27 (TARGET BOTTOM HOLE)	NAD 27 (SURFACE LOCATION)
LATITUDE = 39°29'20.98" (39.489161)	LATITUDE = 39°29'42.59" (39.495164)
LONGITUDE = 108°10'36.31" (108.176753)	LONGITUDE = 108°10'32.09" (108.175581)
UTM NAD 27 ZONE 12	UTM NAD 27 ZONE 12
N: 14352525.00 E: 2437013.10	N: 14354721.38 E: 2437275.37

CERTIFICATE OF ACCURACY
 THIS IS TO CERTIFY THAT THE ABOVE PLAT WAS PREPARED FROM FIELD NOTES OF ACTUAL SURVEYS MADE BY ME OR UNDER MY SUPERVISION AND THAT THE SAME ARE TRUE AND CORRECT TO THE BEST OF MY KNOWLEDGE AND BELIEF.
 HANDED MANUEL
 REGISTERED LAND SURVEYOR
 REGISTRATION NO. 18180
 STATE OF COLORADO 01-28-16

BASIS OF BEARINGS
 BASIS OF BEARINGS IS A G.P.S. OBSERVATION
BASIS OF ELEVATION

SPOT ELEVATION AT THE NORTHWEST CORNER OF SECTION 30, T5S, R95W, 6th P.M. TAKEN FROM THE FORKED GULCH QUADRANGLE, COLORADO, GARFIELD COUNTY, 7.5 MINUTE SERIES (TOPOGRAPHICAL MAP) PUBLISHED BY THE UNITED STATES DEPARTMENT OF THE INTERIOR, GEOLOGICAL SURVEY. SAID ELEVATION IS MARKED AS BEING 5966 FEET.

Caerus Oil & Gas LLC

PUCKETT 14B-25
 SW 1/4 NW 1/4, SECTION 25, T6S, R97W, 6th P.M.
 GARFIELD COUNTY, COLORADO

SURVEYED BY	DATE	REVISED BY	DATE
BRADEN BOX, B.B.	12-14-15		
DRAWN BY	DATE		
C.D.L.	01-04-16		

WELL LOCATION PLAT



UELS, LLC
 Corporate Office * 85 South 200 East
 Vernal, UT 84078 * (435) 789-1017

