

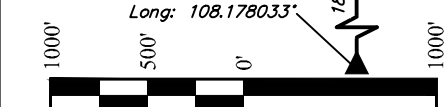
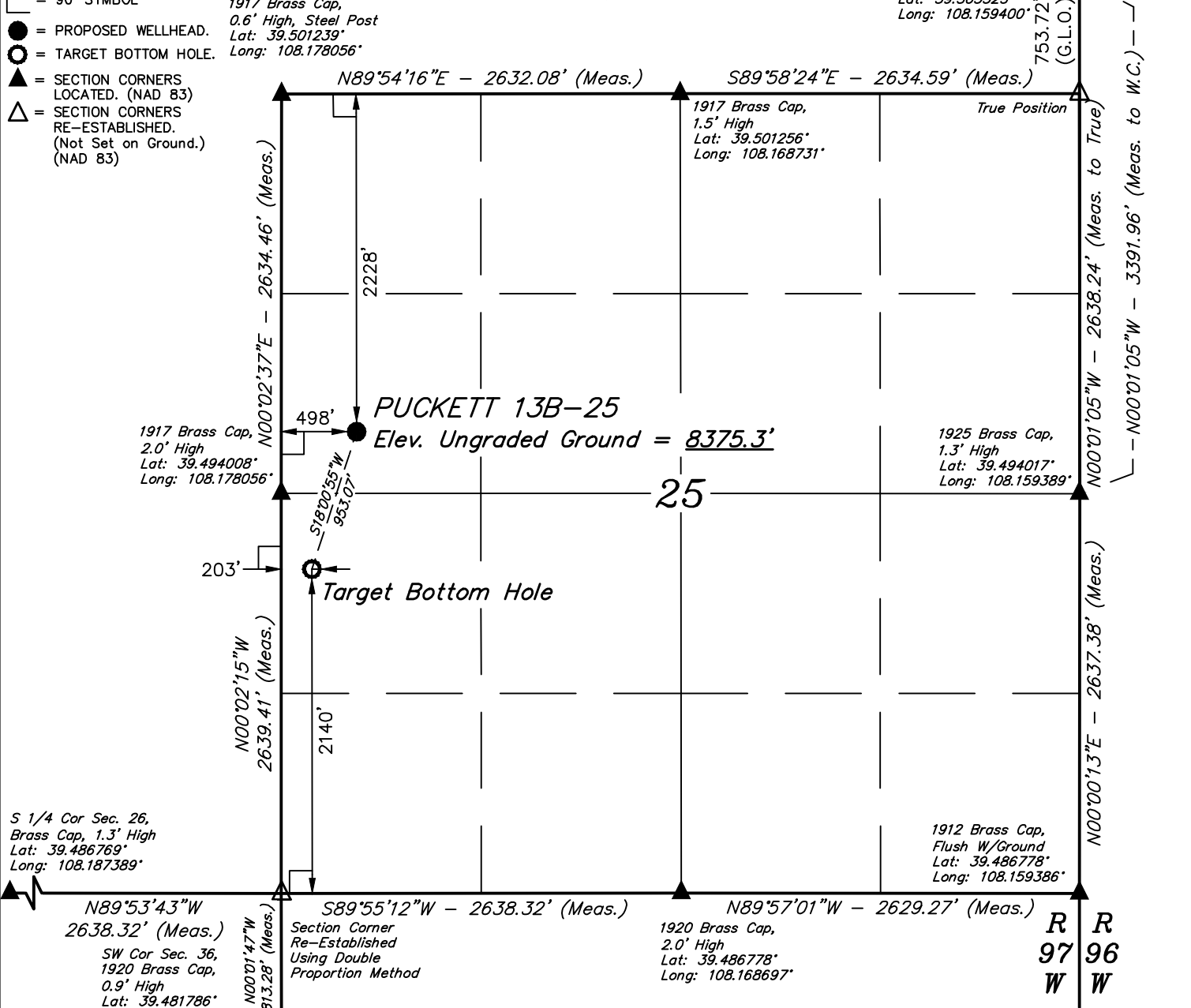
**LEGEND:**

- └─ = 90° SYMBOL
- = PROPOSED WELLHEAD.
- = TARGET BOTTOM HOLE.
- ▲ = SECTION CORNERS LOCATED. (NAD 83)
- △ = SECTION CORNERS RE-ESTABLISHED. (Not Set on Ground.) (NAD 83)

1917 Brass Cap,  
0.6' High, Steel Post  
Lat: 39.501239°  
Long: 108.178056°

W.C. 1912 Brass  
Cap, 1.5' High  
Lat: 39.503325°  
Long: 108.159400°

# T6S, R97W, 6th P.M.



PDOP = 1.2

NAD 83 (TARGET BOTTOM HOLE)	NAD 83 (SURFACE LOCATION)
LATITUDE = 39°29'33.50" (39.492639)	LATITUDE = 39°29'42.45" (39.495125)
LONGITUDE = 108°10'38.41" (108.177336)	LONGITUDE = 108°10'34.65" (108.176292)
NAD 27 (TARGET BOTTOM HOLE)	NAD 27 (SURFACE LOCATION)
LATITUDE = 39°29'33.58" (39.492661)	LATITUDE = 39°29'42.53" (39.495147)
LONGITUDE = 108°10'36.11" (108.176697)	LONGITUDE = 108°10'32.36" (108.175656)
UTM NAD 27 ZONE 12	UTM NAD 27 ZONE 12
N: 14353800.00 E: 2436988.20	N: 14354715.38 E: 2437253.72

CERTIFICATE OF ACCURACY  
 THIS IS TO CERTIFY THAT THE ABOVE PLAT WAS PREPARED FROM FIELD NOTES OF ACTUAL SURVEYS MADE BY ME OR UNDER MY SUPERVISION AND THAT THE SAME ARE TRUE AND CORRECT TO THE BEST OF MY KNOWLEDGE AND BELIEF.

*Harold Massey*  
 REGISTERED LAND SURVEYOR  
 REGISTRATION NO. 18180  
 STATE OF COLORADO 01-28-16

**BASIS OF BEARINGS**  
 BASIS OF BEARINGS IS A G.P.S. OBSERVATION

**BASIS OF ELEVATION**

SPOT ELEVATION AT THE NORTHWEST CORNER OF SECTION 30, T5S, R95W, 6th P.M. TAKEN FROM THE FORKED GULCH QUADRANGLE, COLORADO, GARFIELD COUNTY, 7.5 MINUTE SERIES (TOPOGRAPHICAL MAP) PUBLISHED BY THE UNITED STATES DEPARTMENT OF THE INTERIOR, GEOLOGICAL SURVEY. SAID ELEVATION IS MARKED AS BEING 5966 FEET.

## Caerus Oil & Gas LLC

**PUCKETT 13B-25**  
 SW 1/4 NW 1/4, SECTION 25, T6S, R97W, 6th P.M.  
 GARFIELD COUNTY, COLORADO

SURVEYED BY	DATE	REVISED BY	DATE
BRADEN BOX, B.B.	12-14-15		
DRAWN BY	DATE		
C.D.L.	01-04-16		

### WELL LOCATION PLAT



**UELS, LLC**  
 Corporate Office \* 85 South 200 East  
 Vernal, UT 84078 \* (435) 789-1017

