



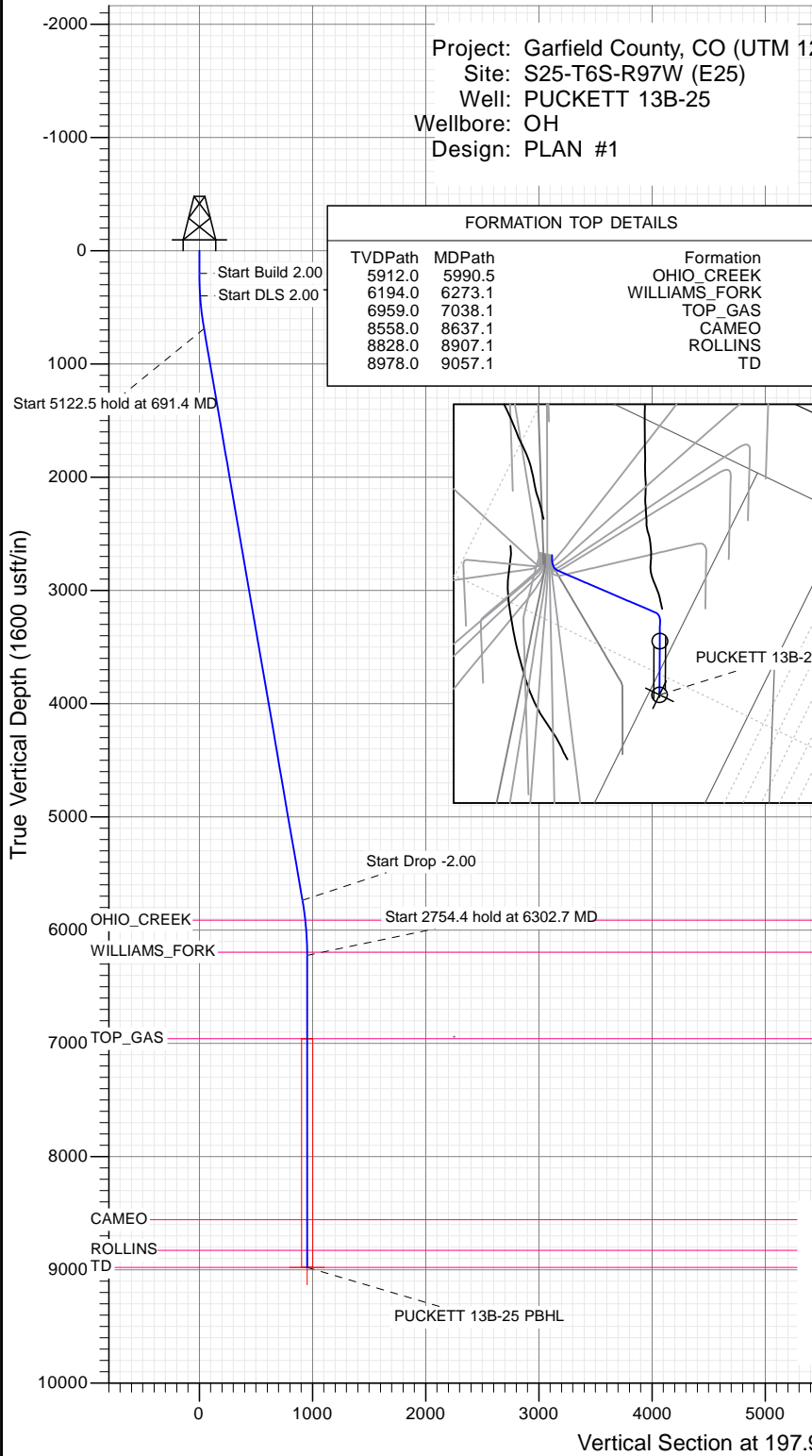
SECTION DETAILS

Sec	MD	Inc	Azi	TVD	+N/-S	+E/-W	Dleg	TFace	VSect	Target
1	0.0	0.00	0.00	0.0	0.0	0.0	0.00	0.00	0.0	
2	200.0	0.00	0.00	200.0	0.0	0.0	0.00	0.00	0.0	
3	400.0	4.00	205.00	399.8	-6.3	-2.9	2.00	205.00	6.9	
4	691.4	9.78	197.84	689.0	-39.1	-14.8	2.00	-12.02	41.8	
5	5813.9	9.78	197.84	5737.2	-867.0	-281.3	0.00	0.00	911.5	
6	6302.7	0.00	0.00	6223.6	-906.6	-294.1	2.00	180.00	953.1	
7	9057.1	0.00	0.00	8978.0	-906.6	-294.1	0.00	0.00	953.1	PUCKETT 13B-25 PBHL

Project: Garfield County, CO (UTM 12
 Site: S25-T6S-R97W (E25)
 Well: PUCKETT 13B-25
 Wellbore: OH
 Design: PLAN #1

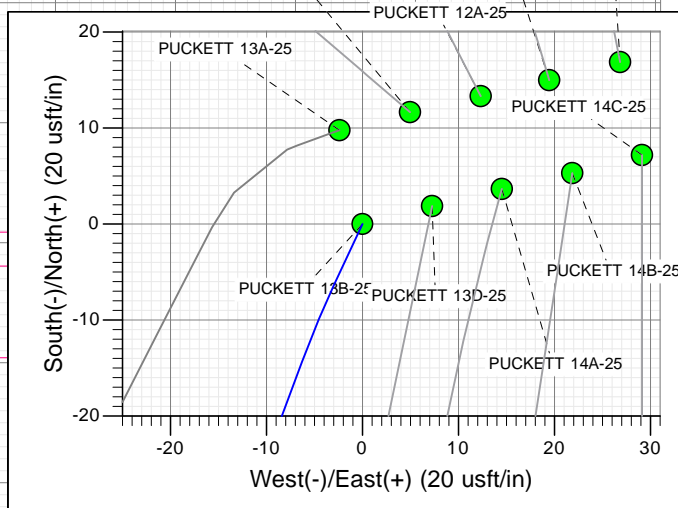
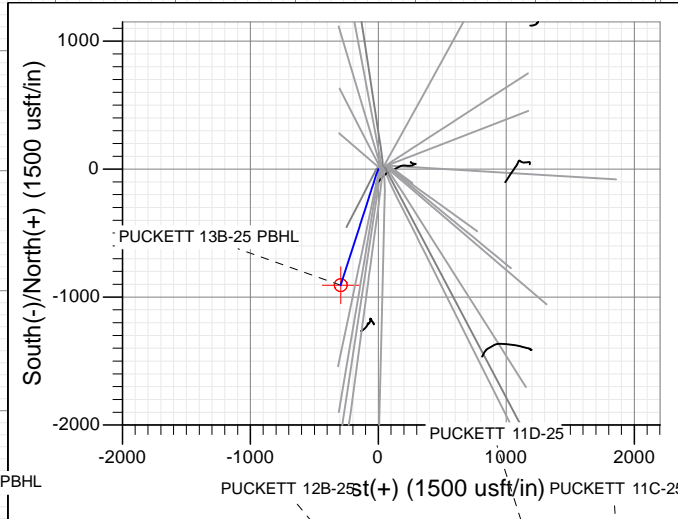
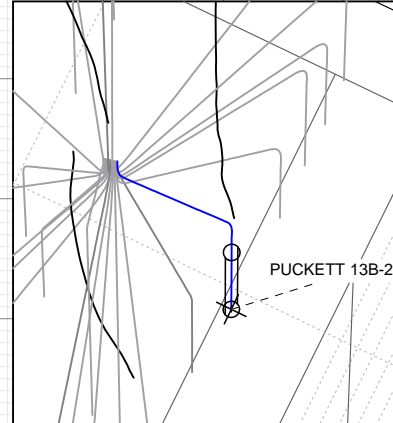
PLAN #1
 PUCKETT 13B-25
 15XXX LR
 30 KB @ 8406.0usft
 Ground Level @ 8376.0
 NAD 1927 - Western US
 Well PUCKETT 13B-25, True North

Type	TD	Target	No Target (Freehand)	Azimuth	Origin Type	N/S	E/W	From TVD
Name	TVD	+N/-S	+E/-W	Latitude	Longitude			
PUCKETT 13B-25 PBHL	8978.0	-906.6	-294.1	39.492660	-108.176698			



FORMATION TOP DETAILS

TVDPPath	MDPath	Formation
5912.0	5990.5	OHIO_CREEK
6194.0	6273.1	WILLIAMS_FORK
6959.0	7038.1	TOP_GAS
8558.0	8637.1	CAMEO
8828.0	8907.1	ROLLINS
8978.0	9057.1	TD



T M
 Azimuths to True North
 Magnetic North: 9.82°
 Magnetic Field
 Strength: 51888.5snT
 Dip Angle: 65.85°
 Date: 1/7/2016
 Model: HDGM

CASING DETAILS
 No casing data is available



WELL DETAILS: PUCKETT 13B-25

		Ground Level: 8376.0			
+N/-S	+E/-W	Northing	Easting	Latitude	Longitude
0.0	0.0	14354715.40	2437253.70	39.495148	-108.175657



Planning Report

Database: USA EDM 5000 Multi Users DB	Local Co-ordinate Reference: Well PUCKETT 13B-25
Company: Caerus Oil & Gas	TVD Reference: 30' KB @ 8406.0usft
Project: Garfield County, CO (UTM 12N)	MD Reference: 30' KB @ 8406.0usft
Site: S25-T6S-R97W (E25)	North Reference: True
Well: PUCKETT 13B-25	Survey Calculation Method: Minimum Curvature
Wellbore: OH	
Design: PLAN #1	

Project Garfield County, CO (UTM 12N)	
Map System: Universal Transverse Mercator (US Survey Feet)	System Datum: Mean Sea Level
Geo Datum: NAD 1927 - Western US	
Map Zone: Zone 12N (114 W to 108 W)	

Site S25-T6S-R97W (E25)		
Site Position:	Northing: 14,354,735.00 usft	Latitude: 39.495199
From: Map	Easting: 2,437,287.30 usft	Longitude: -108.175536
Position Uncertainty: 0.0 usft	Slot Radius: 13-3/16"	Grid Convergence: 1.80 °

Well PUCKETT 13B-25			
Well Position	+N/-S 0.0 usft	Northing: 14,354,715.40 usft	Latitude: 39.495148
	+E/-W 0.0 usft	Easting: 2,437,253.70 usft	Longitude: -108.175657
Position Uncertainty	0.0 usft	Wellhead Elevation: 0.0 usft	Ground Level: 8,376.0 usft

Wellbore OH					
Magnetics	Model Name	Sample Date	Declination	Dip Angle	Field Strength
	HDGM	1/7/2016	(°) 9.82	(°) 65.85	(nT) 51,889

Design PLAN #1				
Audit Notes:				
Version:	Phase: PLAN	Tie On Depth: 0.0		
Vertical Section:	Depth From (TVD)	+N/-S	+E/-W	Direction
	(usft)	(usft)	(usft)	(°)
	0.0	0.0	0.0	197.97

Plan Sections										
Measured Depth (usft)	Inclination (°)	Azimuth (°)	Vertical Depth (usft)	+N/-S (usft)	+E/-W (usft)	Dogleg Rate (°/100usft)	Build Rate (°/100usft)	Turn Rate (°/100usft)	TFO (°)	Target
0.0	0.00	0.00	0.0	0.0	0.0	0.00	0.00	0.00	0.00	
200.0	0.00	0.00	200.0	0.0	0.0	0.00	0.00	0.00	0.00	
400.0	4.00	205.00	399.8	-6.3	-2.9	2.00	2.00	0.00	205.00	
691.4	9.78	197.84	689.0	-39.1	-14.8	2.00	1.98	-2.46	-12.02	
5,813.9	9.78	197.84	5,737.2	-867.0	-281.3	0.00	0.00	0.00	0.00	
6,302.7	0.00	0.00	6,223.6	-906.6	-294.1	2.00	-2.00	0.00	180.00	
9,057.1	0.00	0.00	8,978.0	-906.6	-294.1	0.00	0.00	0.00	0.00	PUCKETT 13B-25 PE

Planning Report

Database:	USA EDM 5000 Multi Users DB	Local Co-ordinate Reference:	Well PUCKETT 13B-25
Company:	Caerus Oil & Gas	TVD Reference:	30' KB @ 8406.0usft
Project:	Garfield County, CO (UTM 12N)	MD Reference:	30' KB @ 8406.0usft
Site:	S25-T6S-R97W (E25)	North Reference:	True
Well:	PUCKETT 13B-25	Survey Calculation Method:	Minimum Curvature
Wellbore:	OH		
Design:	PLAN #1		

Planned Survey									
Measured Depth (usft)	Inclination (°)	Azimuth (°)	Vertical Depth (usft)	+N/-S (usft)	+E/-W (usft)	Vertical Section (usft)	Dogleg Rate (°/100usft)	Build Rate (°/100u)	Comments / Formations
0.0	0.00	0.00	0.0	0.0	0.0	0.0	0.00	0.00	
100.0	0.00	0.00	100.0	0.0	0.0	0.0	0.00	0.00	
200.0	0.00	0.00	200.0	0.0	0.0	0.0	0.00	0.00	Start Build 2.00
300.0	2.00	205.00	300.0	-1.6	-0.7	1.7	2.00	2.00	
400.0	4.00	205.00	399.8	-6.3	-2.9	6.9	2.00	2.00	Start DLS 2.00 TFO -12.02
500.0	5.97	200.99	499.5	-14.3	-6.3	15.6	2.00	1.97	
600.0	7.96	198.97	598.7	-25.7	-10.4	27.7	2.00	1.99	
691.4	9.78	197.84	689.0	-39.1	-14.8	41.8	2.00	1.99	Start 5122.5 hold at 691.4 MD
700.0	9.78	197.84	697.5	-40.5	-15.3	43.2	0.00	0.00	
800.0	9.78	197.84	796.0	-56.7	-20.5	60.2	0.00	0.00	
900.0	9.78	197.84	894.6	-72.8	-25.7	77.2	0.00	0.00	
1,000.0	9.78	197.84	993.1	-89.0	-30.9	94.2	0.00	0.00	
1,100.0	9.78	197.84	1,091.7	-105.2	-36.1	111.2	0.00	0.00	
1,200.0	9.78	197.84	1,190.2	-121.3	-41.3	128.1	0.00	0.00	
1,300.0	9.78	197.84	1,288.8	-137.5	-46.5	145.1	0.00	0.00	
1,400.0	9.78	197.84	1,387.3	-153.6	-51.7	162.1	0.00	0.00	
1,500.0	9.78	197.84	1,485.9	-169.8	-56.9	179.1	0.00	0.00	
1,600.0	9.78	197.84	1,584.4	-186.0	-62.1	196.1	0.00	0.00	
1,700.0	9.78	197.84	1,683.0	-202.1	-67.3	213.0	0.00	0.00	
1,800.0	9.78	197.84	1,781.5	-218.3	-72.5	230.0	0.00	0.00	
1,900.0	9.78	197.84	1,880.1	-234.4	-77.7	247.0	0.00	0.00	
2,000.0	9.78	197.84	1,978.6	-250.6	-82.9	264.0	0.00	0.00	
2,100.0	9.78	197.84	2,077.2	-266.8	-88.1	280.9	0.00	0.00	
2,200.0	9.78	197.84	2,175.7	-282.9	-93.3	297.9	0.00	0.00	
2,300.0	9.78	197.84	2,274.3	-299.1	-98.5	314.9	0.00	0.00	
2,400.0	9.78	197.84	2,372.8	-315.3	-103.7	331.9	0.00	0.00	
2,500.0	9.78	197.84	2,471.4	-331.4	-108.9	348.9	0.00	0.00	
2,600.0	9.78	197.84	2,569.9	-347.6	-114.1	365.8	0.00	0.00	
2,700.0	9.78	197.84	2,668.5	-363.7	-119.3	382.8	0.00	0.00	
2,800.0	9.78	197.84	2,767.0	-379.9	-124.5	399.8	0.00	0.00	
2,900.0	9.78	197.84	2,865.5	-396.1	-129.7	416.8	0.00	0.00	
3,000.0	9.78	197.84	2,964.1	-412.2	-134.9	433.8	0.00	0.00	
3,100.0	9.78	197.84	3,062.6	-428.4	-140.1	450.7	0.00	0.00	
3,200.0	9.78	197.84	3,161.2	-444.6	-145.3	467.7	0.00	0.00	
3,300.0	9.78	197.84	3,259.7	-460.7	-150.5	484.7	0.00	0.00	
3,400.0	9.78	197.84	3,358.3	-476.9	-155.7	501.7	0.00	0.00	
3,500.0	9.78	197.84	3,456.8	-493.0	-161.0	518.6	0.00	0.00	
3,600.0	9.78	197.84	3,555.4	-509.2	-166.2	535.6	0.00	0.00	
3,700.0	9.78	197.84	3,653.9	-525.4	-171.4	552.6	0.00	0.00	
3,800.0	9.78	197.84	3,752.5	-541.5	-176.6	569.6	0.00	0.00	
3,900.0	9.78	197.84	3,851.0	-557.7	-181.8	586.6	0.00	0.00	
4,000.0	9.78	197.84	3,949.6	-573.9	-187.0	603.5	0.00	0.00	
4,100.0	9.78	197.84	4,048.1	-590.0	-192.2	620.5	0.00	0.00	
4,200.0	9.78	197.84	4,146.7	-606.2	-197.4	637.5	0.00	0.00	
4,300.0	9.78	197.84	4,245.2	-622.3	-202.6	654.5	0.00	0.00	
4,400.0	9.78	197.84	4,343.8	-638.5	-207.8	671.5	0.00	0.00	
4,500.0	9.78	197.84	4,442.3	-654.7	-213.0	688.4	0.00	0.00	
4,600.0	9.78	197.84	4,540.9	-670.8	-218.2	705.4	0.00	0.00	
4,700.0	9.78	197.84	4,639.4	-687.0	-223.4	722.4	0.00	0.00	
4,800.0	9.78	197.84	4,738.0	-703.2	-228.6	739.4	0.00	0.00	
4,900.0	9.78	197.84	4,836.5	-719.3	-233.8	756.4	0.00	0.00	
5,000.0	9.78	197.84	4,935.1	-735.5	-239.0	773.3	0.00	0.00	

Planning Report

Database:	USA EDM 5000 Multi Users DB	Local Co-ordinate Reference:	Well PUCKETT 13B-25
Company:	Caerus Oil & Gas	TVD Reference:	30' KB @ 8406.0usft
Project:	Garfield County, CO (UTM 12N)	MD Reference:	30' KB @ 8406.0usft
Site:	S25-T6S-R97W (E25)	North Reference:	True
Well:	PUCKETT 13B-25	Survey Calculation Method:	Minimum Curvature
Wellbore:	OH		
Design:	PLAN #1		

Planned Survey									
Measured Depth (usft)	Inclination (°)	Azimuth (°)	Vertical Depth (usft)	+N/-S (usft)	+E/-W (usft)	Vertical Section (usft)	Dogleg Rate (°/100usft)	Build Rate (°/100u)	Comments / Formations
5,100.0	9.78	197.84	5,033.6	-751.6	-244.2	790.3	0.00	0.00	
5,200.0	9.78	197.84	5,132.2	-767.8	-249.4	807.3	0.00	0.00	
5,300.0	9.78	197.84	5,230.7	-784.0	-254.6	824.3	0.00	0.00	
5,400.0	9.78	197.84	5,329.2	-800.1	-259.8	841.2	0.00	0.00	
5,500.0	9.78	197.84	5,427.8	-816.3	-265.0	858.2	0.00	0.00	
5,600.0	9.78	197.84	5,526.3	-832.5	-270.2	875.2	0.00	0.00	
5,700.0	9.78	197.84	5,624.9	-848.6	-275.4	892.2	0.00	0.00	
5,800.0	9.78	197.84	5,723.4	-864.8	-280.6	909.2	0.00	0.00	
5,813.9	9.78	197.84	5,737.2	-867.0	-281.3	911.5	0.00	0.00	Start Drop -2.00
5,900.0	8.05	197.84	5,822.2	-879.7	-285.4	924.9	2.00	-2.00	
5,990.5	6.24	197.84	5,912.0	-890.4	-288.9	936.1	2.00	-2.00	OHIO_CREEK
6,000.0	6.05	197.84	5,921.4	-891.4	-289.2	937.1	2.00	-2.00	
6,100.0	4.05	197.84	6,021.0	-899.8	-291.9	946.0	2.00	-2.00	
6,200.0	2.05	197.84	6,120.9	-904.9	-293.5	951.3	2.00	-2.00	
6,273.1	0.59	197.84	6,194.0	-906.5	-294.0	953.0	2.00	-2.00	WILLIAMS_FORK
6,300.0	0.05	197.84	6,220.9	-906.6	-294.1	953.1	2.00	-2.00	
6,302.7	0.00	0.00	6,223.6	-906.6	-294.1	953.1	2.00	-2.00	Start 2754.4 hold at 6302.7 MD
6,400.0	0.00	0.00	6,320.9	-906.6	-294.1	953.1	0.00	0.00	
6,500.0	0.00	0.00	6,420.9	-906.6	-294.1	953.1	0.00	0.00	
6,600.0	0.00	0.00	6,520.9	-906.6	-294.1	953.1	0.00	0.00	
6,700.0	0.00	0.00	6,620.9	-906.6	-294.1	953.1	0.00	0.00	
6,800.0	0.00	0.00	6,720.9	-906.6	-294.1	953.1	0.00	0.00	
6,900.0	0.00	0.00	6,820.9	-906.6	-294.1	953.1	0.00	0.00	
7,000.0	0.00	0.00	6,920.9	-906.6	-294.1	953.1	0.00	0.00	
7,038.1	0.00	0.00	6,959.0	-906.6	-294.1	953.1	0.00	0.00	TOP_GAS
7,100.0	0.00	0.00	7,020.9	-906.6	-294.1	953.1	0.00	0.00	
7,200.0	0.00	0.00	7,120.9	-906.6	-294.1	953.1	0.00	0.00	
7,300.0	0.00	0.00	7,220.9	-906.6	-294.1	953.1	0.00	0.00	
7,400.0	0.00	0.00	7,320.9	-906.6	-294.1	953.1	0.00	0.00	
7,500.0	0.00	0.00	7,420.9	-906.6	-294.1	953.1	0.00	0.00	
7,600.0	0.00	0.00	7,520.9	-906.6	-294.1	953.1	0.00	0.00	
7,700.0	0.00	0.00	7,620.9	-906.6	-294.1	953.1	0.00	0.00	
7,800.0	0.00	0.00	7,720.9	-906.6	-294.1	953.1	0.00	0.00	
7,900.0	0.00	0.00	7,820.9	-906.6	-294.1	953.1	0.00	0.00	
8,000.0	0.00	0.00	7,920.9	-906.6	-294.1	953.1	0.00	0.00	
8,100.0	0.00	0.00	8,020.9	-906.6	-294.1	953.1	0.00	0.00	
8,200.0	0.00	0.00	8,120.9	-906.6	-294.1	953.1	0.00	0.00	
8,300.0	0.00	0.00	8,220.9	-906.6	-294.1	953.1	0.00	0.00	
8,400.0	0.00	0.00	8,320.9	-906.6	-294.1	953.1	0.00	0.00	
8,500.0	0.00	0.00	8,420.9	-906.6	-294.1	953.1	0.00	0.00	
8,600.0	0.00	0.00	8,520.9	-906.6	-294.1	953.1	0.00	0.00	
8,637.1	0.00	0.00	8,558.0	-906.6	-294.1	953.1	0.00	0.00	CAMEO
8,700.0	0.00	0.00	8,620.9	-906.6	-294.1	953.1	0.00	0.00	
8,800.0	0.00	0.00	8,720.9	-906.6	-294.1	953.1	0.00	0.00	
8,900.0	0.00	0.00	8,820.9	-906.6	-294.1	953.1	0.00	0.00	
8,907.1	0.00	0.00	8,828.0	-906.6	-294.1	953.1	0.00	0.00	ROLLINS
9,000.0	0.00	0.00	8,920.9	-906.6	-294.1	953.1	0.00	0.00	
9,057.1	0.00	0.00	8,978.0	-906.6	-294.1	953.1	0.00	0.00	TD at 9057.1 - TD

Planning Report

Database:	USA EDM 5000 Multi Users DB	Local Co-ordinate Reference:	Well PUCKETT 13B-25
Company:	Caerus Oil & Gas	TVD Reference:	30' KB @ 8406.0usft
Project:	Garfield County, CO (UTM 12N)	MD Reference:	30' KB @ 8406.0usft
Site:	S25-T6S-R97W (E25)	North Reference:	True
Well:	PUCKETT 13B-25	Survey Calculation Method:	Minimum Curvature
Wellbore:	OH		
Design:	PLAN #1		

Targets									
Target Name	Dip Angle	Dip Dir.	TVD	+N/-S	+E/-W	Northing	Easting	Latitude	Longitude
- hit/miss target	(°)	(°)	(usft)	(usft)	(usft)	(usft)	(usft)		
- Shape									
PUCKETT 13B-25 PBHL - plan hits target center - Circle (radius 50.0)	0.00	0.00	8,978.0	-906.6	-294.1	14,353,800.00	2,436,988.20	39.492660	-108.176698

Formations						
Measured Depth	Vertical Depth	Name	Lithology	Dip	Dip Direction	
(usft)	(usft)			(°)	(°)	
5,990.5	5,912.0	OHIO_CREEK				
6,273.1	6,194.0	WILLIAMS_FORK				
7,038.1	6,959.0	TOP_GAS				
8,637.1	8,558.0	CAMEO				
8,907.1	8,828.0	ROLLINS				
9,057.1	8,978.0	TD				

Plan Annotations					
Measured Depth	Vertical Depth	Local Coordinates		Comment	
(usft)	(usft)	+N/-S	+E/-W		
		(usft)	(usft)		
200.0	200.0	0.0	0.0	Start Build 2.00	
400.0	399.8	-6.3	-2.9	Start DLS 2.00 TFO -12.02	
691.4	689.0	-39.1	-14.8	Start 5122.5 hold at 691.4 MD	
5,813.9	5,737.2	-867.0	-281.3	Start Drop -2.00	
6,302.7	6,223.6	-906.6	-294.1	Start 2754.4 hold at 6302.7 MD	
9,057.1	8,978.0	-906.6	-294.1	TD at 9057.1	