

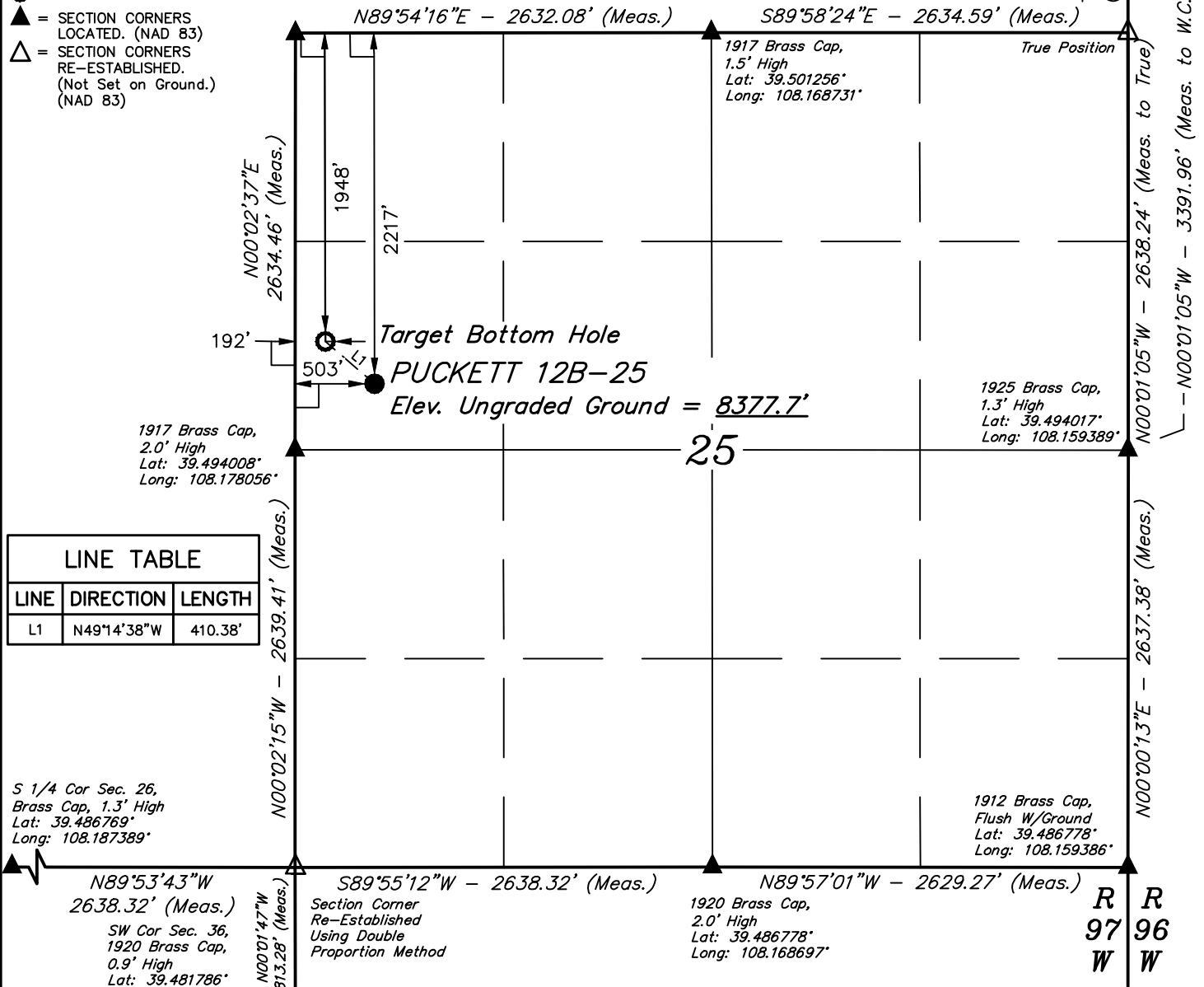
T6S, R97W, 6th P.M.

LEGEND:

- └─┘ = 90° SYMBOL
- = PROPOSED WELLHEAD.
- = TARGET BOTTOM HOLE.
- ▲ = SECTION CORNERS LOCATED. (NAD 83)
- △ = SECTION CORNERS RE-ESTABLISHED. (Not Set on Ground.) (NAD 83)

1917 Brass Cap,
0.6' High, Steel Post
Lat: 39.501239°
Long: 108.178056°

W.C. 1912 Brass
Cap, 1.5' High
Lat: 39.503325°
Long: 108.159400°



LINE TABLE		
LINE	DIRECTION	LENGTH
L1	N49°14'38"W	410.38'

S 1/4 Cor Sec. 26,
Brass Cap, 1.3' High
Lat: 39.486769°
Long: 108.187389°

Section Corner
Re-Established
Using Double
Proportion Method

1920 Brass Cap,
2.0' High
Lat: 39.486778°
Long: 108.168697°

1912 Brass Cap,
Flush W/Ground
Lat: 39.486778°
Long: 108.159386°



PDOP = 1.2

NAD 83 (TARGET BOTTOM HOLE)	NAD 83 (SURFACE LOCATION)
LATITUDE = 39°29'45.21" (39.495892)	LATITUDE = 39°29'42.57" (39.495158)
LONGITUDE = 108°10'38.56" (108.177378)	LONGITUDE = 108°10'34.59" (108.176275)
NAD 27 (TARGET BOTTOM HOLE)	NAD 27 (SURFACE LOCATION)
LATITUDE = 39°29'45.29" (39.495914)	LATITUDE = 39°29'42.65" (39.495181)
LONGITUDE = 108°10'36.27" (108.176742)	LONGITUDE = 108°10'32.30" (108.175639)
UTM NAD 27 ZONE 12	UTM NAD 27 ZONE 12
N: 14354985.00 E: 2436939.00	N: 14354727.20 E: 2437258.33

CERTIFICATE OF ACCURACY

THIS IS TO CERTIFY THAT THE ABOVE PLAT WAS PREPARED FROM FIELD NOTES OF ACTUAL SURVEYS MADE BY ME OR UNDER MY SUPERVISION AND THAT THE SAME ARE TRUE AND CORRECT TO THE BEST OF MY KNOWLEDGE AND BELIEF.

REGISTERED LAND SURVEYOR
REGISTRATION NO. 38130
STATE OF COLORADO 01-28-16

BASES OF BEARINGS
BASIS OF BEARINGS IS A G.P.S. OBSERVATION

BASES OF ELEVATION

SPOT ELEVATION AT THE NORTHWEST CORNER OF SECTION 30, T5S, R95W, 6th P.M. TAKEN FROM THE FORKED GULCH QUADRANGLE, COLORADO, GARFIELD COUNTY, 7.5 MINUTE SERIES (TOPOGRAPHICAL MAP) PUBLISHED BY THE UNITED STATES DEPARTMENT OF THE INTERIOR, GEOLOGICAL SURVEY. SAID ELEVATION IS MARKED AS BEING 5966 FEET.



UELS, LLC
Corporate Office * 85 South 200 East
Vernal, UT 84078 * (435) 789-1017

Caerus Oil & Gas LLC

PUCKETT 12B-25
SW 1/4 NW 1/4, SECTION 25, T6S, R97W, 6th P.M.
GARFIELD COUNTY, COLORADO

SURVEYED BY	DATE	REVISED BY	DATE
BRADEN BOX, B.B.	12-14-15		
DRAWN BY	DATE		
C.D.L.	01-04-16		

WELL LOCATION PLAT