



SECTION DETAILS

Sec	MD	Inc	Azi	TVD	+N/-S	+E/-W	Dleg	TFace	Vsect	Target
1	0.0	0.00	0.00	0.0	0.0	0.0	0.00	0.00	0.0	
2	200.0	0.00	0.00	200.0	0.0	0.0	0.00	0.00	0.0	
3	382.4	3.65	310.71	382.3	3.8	-4.4	2.00	310.71	5.8	
4	6649.5	3.65	310.71	6636.7	263.9	-306.7	0.00	0.00	404.6	
5	6831.9	0.00	0.00	6819.0	267.7	-311.1	2.00	180.00	410.4	
6	9022.9	0.00	0.00	9010.0	267.7	-311.1	0.00	0.00	410.4	PUCKETT 12B-25 PBHL

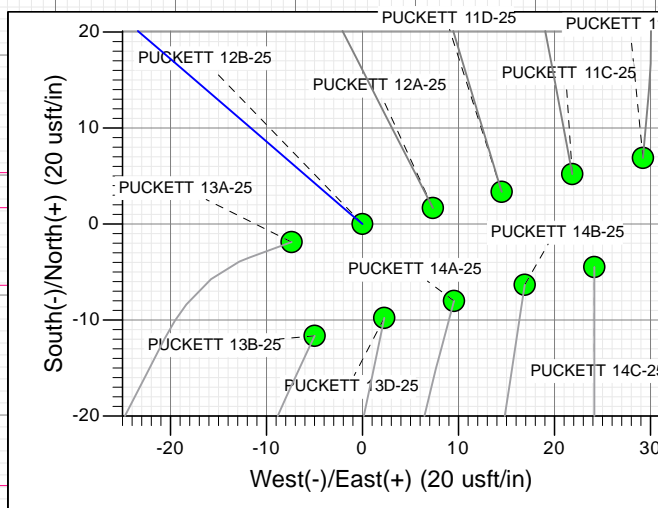
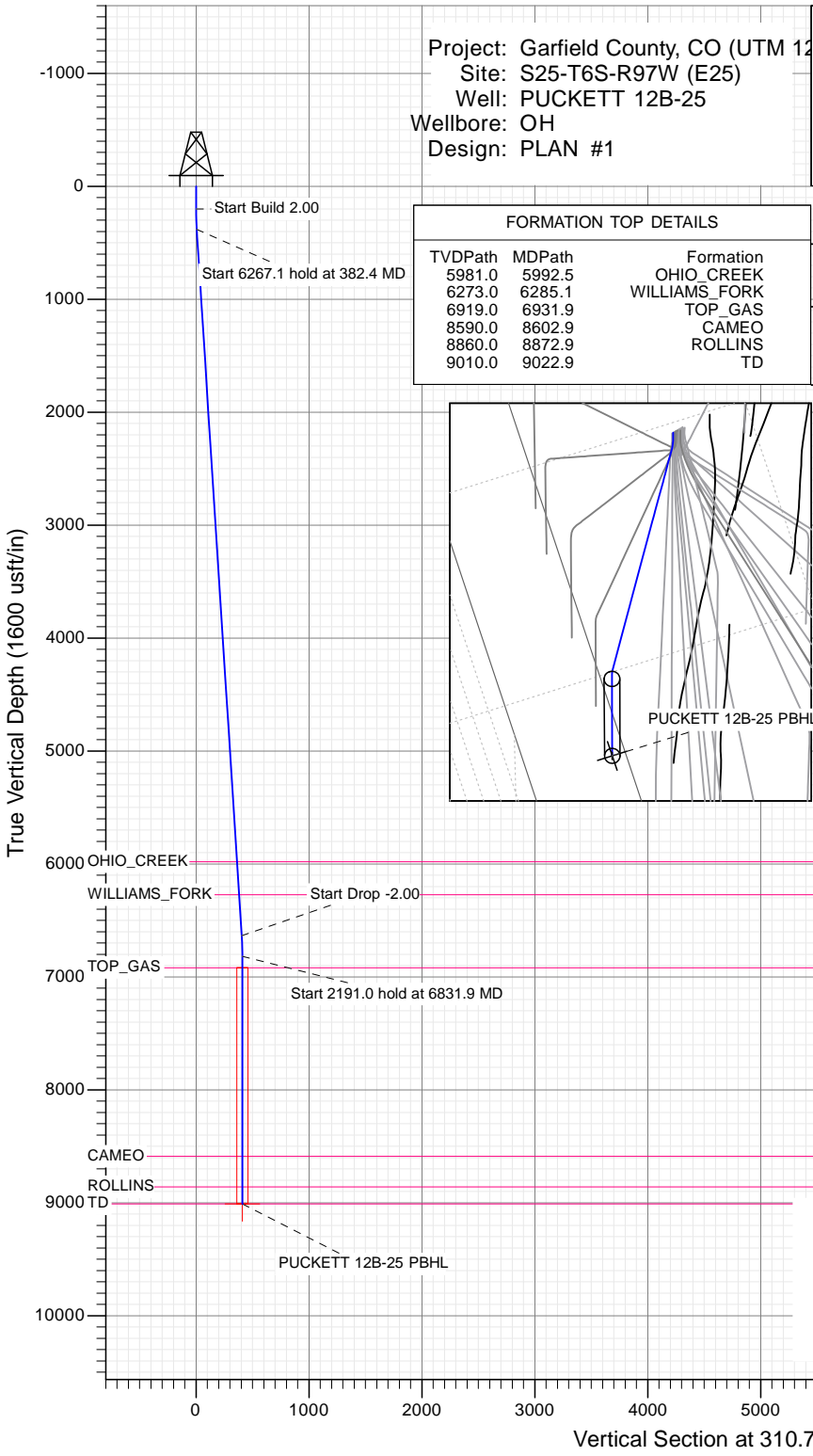
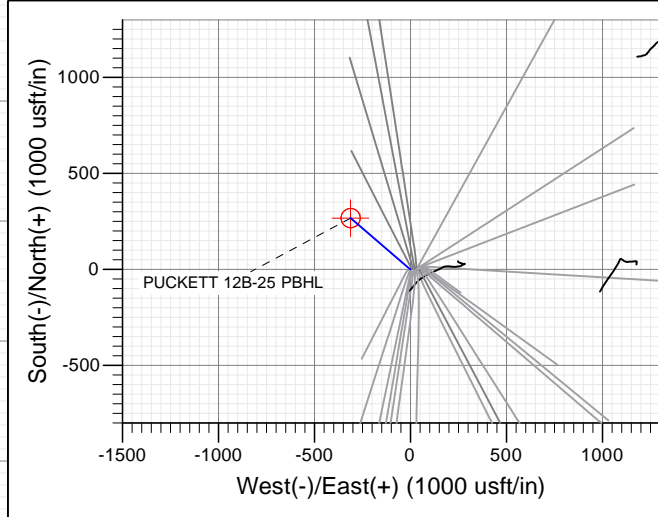
Project: Garfield County, CO (UTM 12
 Site: S25-T6S-R97W (E25)
 Well: PUCKETT 12B-25
 Wellbore: OH
 Design: PLAN #1

PLAN #1
 PUCKETT 12B-25
 15XXX LR
 30 KB @ 8406.0usft
 Ground Level @ 8376.0
 NAD 1927 - Western US
 Well PUCKETT 12B-25, True North

Type	Target	Azimuth	Origin	Type	N/S	E/W	From
TD	No Target (Freehand)	310.71	Slot	Slot	0.0	0.0	TVD
Name		TVD	+N/-S	+E/-W	Latitude	Longitude	
PUCKETT 12B-25 PBHL		9010.0	267.7	-311.1	39.495915	-108.176741	

FORMATION TOP DETAILS

TVDPATH	MDPATH	FORMATION
5981.0	5992.5	OHIO_CREEK
6273.0	6285.1	WILLIAMS_FORK
6919.0	6931.9	TOP_GAS
8590.0	8602.9	CAMEO
8860.0	8872.9	ROLLINS
9010.0	9022.9	TD



T M
 Azimuths to True North
 Magnetic North: 9.82°
 Magnetic Field
 Strength: 51888.5snT
 Dip Angle: 65.85°
 Date: 1/7/2016
 Model: HDGM

CASING DETAILS
 No casing data is available



WELL DETAILS: PUCKETT 12B-25

		Ground Level: 8376.0			
+N/-S	+E/-W	Northing	Easting	Latitude	Longitude
0.0	0.0	14354727.20	2437258.30	39.495180	-108.175639



Planning Report

Database:	USA EDM 5000 Multi Users DB	Local Co-ordinate Reference:	Well PUCKETT 12B-25
Company:	Caerus Oil & Gas	TVD Reference:	30' KB @ 8406.0usft
Project:	Garfield County, CO (UTM 12N)	MD Reference:	30' KB @ 8406.0usft
Site:	S25-T6S-R97W (E25)	North Reference:	True
Well:	PUCKETT 12B-25	Survey Calculation Method:	Minimum Curvature
Wellbore:	OH		
Design:	PLAN #1		

Project	Garfield County, CO (UTM 12N)		
Map System:	Universal Transverse Mercator (US Survey Feet)	System Datum:	Mean Sea Level
Geo Datum:	NAD 1927 - Western US		
Map Zone:	Zone 12N (114 W to 108 W)		

Site	S25-T6S-R97W (E25)				
Site Position:		Northing:	14,354,735.00 usft	Latitude:	39.495199
From:	Map	Easting:	2,437,287.30 usft	Longitude:	-108.175536
Position Uncertainty:	0.0 usft	Slot Radius:	13-3/16"	Grid Convergence:	1.80 °

Well	PUCKETT 12B-25					
Well Position	+N/-S	0.0 usft	Northing:	14,354,727.20 usft	Latitude:	39.495180
	+E/-W	0.0 usft	Easting:	2,437,258.30 usft	Longitude:	-108.175639
Position Uncertainty		0.0 usft	Wellhead Elevation:	0.0 usft	Ground Level:	8,376.0 usft

Wellbore	OH				
Magnetics	Model Name	Sample Date	Declination	Dip Angle	Field Strength
	HDGM	1/7/2016	(°) 9.82	(°) 65.85	(nT) 51,889

Design	PLAN #1			
Audit Notes:				
Version:	Phase:	PLAN	Tie On Depth:	0.0
Vertical Section:	Depth From (TVD)	+N/-S	+E/-W	Direction
	(usft)	(usft)	(usft)	(°)
	0.0	0.0	0.0	310.71

Plan Sections										
Measured Depth (usft)	Inclination (°)	Azimuth (°)	Vertical Depth (usft)	+N/-S (usft)	+E/-W (usft)	Dogleg Rate (°/100usft)	Build Rate (°/100usft)	Turn Rate (°/100usft)	TFO (°)	Target
0.0	0.00	0.00	0.0	0.0	0.0	0.00	0.00	0.00	0.00	
200.0	0.00	0.00	200.0	0.0	0.0	0.00	0.00	0.00	0.00	
382.4	3.65	310.71	382.3	3.8	-4.4	2.00	2.00	0.00	310.71	
6,649.5	3.65	310.71	6,636.7	263.9	-306.7	0.00	0.00	0.00	0.00	
6,831.9	0.00	0.00	6,819.0	267.7	-311.1	2.00	-2.00	0.00	180.00	
9,022.9	0.00	0.00	9,010.0	267.7	-311.1	0.00	0.00	0.00	0.00	PUCKETT 12B-25 PE

Planning Report

Database:	USA EDM 5000 Multi Users DB	Local Co-ordinate Reference:	Well PUCKETT 12B-25
Company:	Caerus Oil & Gas	TVD Reference:	30' KB @ 8406.0usft
Project:	Garfield County, CO (UTM 12N)	MD Reference:	30' KB @ 8406.0usft
Site:	S25-T6S-R97W (E25)	North Reference:	True
Well:	PUCKETT 12B-25	Survey Calculation Method:	Minimum Curvature
Wellbore:	OH		
Design:	PLAN #1		

Planned Survey									
Measured Depth (usft)	Inclination (°)	Azimuth (°)	Vertical Depth (usft)	+N/-S (usft)	+E/-W (usft)	Vertical Section (usft)	Dogleg Rate (°/100usft)	Build Rate (°/100u)	Comments / Formations
0.0	0.00	0.00	0.0	0.0	0.0	0.0	0.00	0.00	
100.0	0.00	0.00	100.0	0.0	0.0	0.0	0.00	0.00	
200.0	0.00	0.00	200.0	0.0	0.0	0.0	0.00	0.00	Start Build 2.00
300.0	2.00	310.71	300.0	1.1	-1.3	1.7	2.00	2.00	
382.4	3.65	310.71	382.3	3.8	-4.4	5.8	2.00	2.00	Start 6267.1 hold at 382.4 MD
400.0	3.65	310.71	399.8	4.5	-5.2	6.9	0.00	0.00	
500.0	3.65	310.71	499.6	8.7	-10.1	13.3	0.00	0.00	
600.0	3.65	310.71	599.4	12.8	-14.9	19.7	0.00	0.00	
700.0	3.65	310.71	699.2	17.0	-19.7	26.0	0.00	0.00	
800.0	3.65	310.71	799.0	21.1	-24.5	32.4	0.00	0.00	
900.0	3.65	310.71	898.8	25.3	-29.4	38.7	0.00	0.00	
1,000.0	3.65	310.71	998.6	29.4	-34.2	45.1	0.00	0.00	
1,100.0	3.65	310.71	1,098.4	33.6	-39.0	51.5	0.00	0.00	
1,200.0	3.65	310.71	1,198.2	37.7	-43.8	57.8	0.00	0.00	
1,300.0	3.65	310.71	1,298.0	41.9	-48.7	64.2	0.00	0.00	
1,400.0	3.65	310.71	1,397.8	46.0	-53.5	70.6	0.00	0.00	
1,500.0	3.65	310.71	1,497.6	50.2	-58.3	76.9	0.00	0.00	
1,600.0	3.65	310.71	1,597.4	54.3	-63.1	83.3	0.00	0.00	
1,700.0	3.65	310.71	1,697.2	58.5	-67.9	89.6	0.00	0.00	
1,800.0	3.65	310.71	1,797.0	62.6	-72.8	96.0	0.00	0.00	
1,900.0	3.65	310.71	1,896.8	66.8	-77.6	102.4	0.00	0.00	
2,000.0	3.65	310.71	1,996.6	70.9	-82.4	108.7	0.00	0.00	
2,100.0	3.65	310.71	2,096.4	75.1	-87.2	115.1	0.00	0.00	
2,200.0	3.65	310.71	2,196.2	79.2	-92.1	121.5	0.00	0.00	
2,300.0	3.65	310.71	2,296.0	83.4	-96.9	127.8	0.00	0.00	
2,400.0	3.65	310.71	2,395.8	87.5	-101.7	134.2	0.00	0.00	
2,500.0	3.65	310.71	2,495.6	91.7	-106.5	140.5	0.00	0.00	
2,600.0	3.65	310.71	2,595.4	95.8	-111.4	146.9	0.00	0.00	
2,700.0	3.65	310.71	2,695.2	100.0	-116.2	153.3	0.00	0.00	
2,800.0	3.65	310.71	2,795.0	104.1	-121.0	159.6	0.00	0.00	
2,900.0	3.65	310.71	2,894.8	108.3	-125.8	166.0	0.00	0.00	
3,000.0	3.65	310.71	2,994.6	112.4	-130.6	172.4	0.00	0.00	
3,100.0	3.65	310.71	3,094.4	116.6	-135.5	178.7	0.00	0.00	
3,200.0	3.65	310.71	3,194.2	120.7	-140.3	185.1	0.00	0.00	
3,300.0	3.65	310.71	3,294.0	124.9	-145.1	191.4	0.00	0.00	
3,400.0	3.65	310.71	3,393.8	129.0	-149.9	197.8	0.00	0.00	
3,500.0	3.65	310.71	3,493.6	133.2	-154.8	204.2	0.00	0.00	
3,600.0	3.65	310.71	3,593.4	137.3	-159.6	210.5	0.00	0.00	
3,700.0	3.65	310.71	3,693.2	141.5	-164.4	216.9	0.00	0.00	
3,800.0	3.65	310.71	3,793.0	145.6	-169.2	223.3	0.00	0.00	
3,900.0	3.65	310.71	3,892.7	149.8	-174.0	229.6	0.00	0.00	
4,000.0	3.65	310.71	3,992.5	153.9	-178.9	236.0	0.00	0.00	
4,100.0	3.65	310.71	4,092.3	158.1	-183.7	242.4	0.00	0.00	
4,200.0	3.65	310.71	4,192.1	162.2	-188.5	248.7	0.00	0.00	
4,300.0	3.65	310.71	4,291.9	166.4	-193.3	255.1	0.00	0.00	
4,400.0	3.65	310.71	4,391.7	170.5	-198.2	261.4	0.00	0.00	
4,500.0	3.65	310.71	4,491.5	174.7	-203.0	267.8	0.00	0.00	
4,600.0	3.65	310.71	4,591.3	178.8	-207.8	274.2	0.00	0.00	
4,700.0	3.65	310.71	4,691.1	183.0	-212.6	280.5	0.00	0.00	
4,800.0	3.65	310.71	4,790.9	187.1	-217.5	286.9	0.00	0.00	
4,900.0	3.65	310.71	4,890.7	191.3	-222.3	293.3	0.00	0.00	
5,000.0	3.65	310.71	4,990.5	195.4	-227.1	299.6	0.00	0.00	

Planning Report

Database:	USA EDM 5000 Multi Users DB	Local Co-ordinate Reference:	Well PUCKETT 12B-25
Company:	Caerus Oil & Gas	TVD Reference:	30' KB @ 8406.0usft
Project:	Garfield County, CO (UTM 12N)	MD Reference:	30' KB @ 8406.0usft
Site:	S25-T6S-R97W (E25)	North Reference:	True
Well:	PUCKETT 12B-25	Survey Calculation Method:	Minimum Curvature
Wellbore:	OH		
Design:	PLAN #1		

Planned Survey									
Measured Depth (usft)	Inclination (°)	Azimuth (°)	Vertical Depth (usft)	+N/-S (usft)	+E/-W (usft)	Vertical Section (usft)	Dogleg Rate (°/100usft)	Build Rate (°/100u)	Comments / Formations
5,100.0	3.65	310.71	5,090.3	199.6	-231.9	306.0	0.00	0.00	
5,200.0	3.65	310.71	5,190.1	203.7	-236.7	312.3	0.00	0.00	
5,300.0	3.65	310.71	5,289.9	207.9	-241.6	318.7	0.00	0.00	
5,400.0	3.65	310.71	5,389.7	212.0	-246.4	325.1	0.00	0.00	
5,500.0	3.65	310.71	5,489.5	216.2	-251.2	331.4	0.00	0.00	
5,600.0	3.65	310.71	5,589.3	220.3	-256.0	337.8	0.00	0.00	
5,700.0	3.65	310.71	5,689.1	224.5	-260.9	344.2	0.00	0.00	
5,800.0	3.65	310.71	5,788.9	228.6	-265.7	350.5	0.00	0.00	
5,900.0	3.65	310.71	5,888.7	232.8	-270.5	356.9	0.00	0.00	
5,992.5	3.65	310.71	5,981.0	236.6	-275.0	362.8	0.00	0.00	OHIO_CREEK
6,000.0	3.65	310.71	5,988.5	236.9	-275.3	363.2	0.00	0.00	
6,100.0	3.65	310.71	6,088.3	241.1	-280.2	369.6	0.00	0.00	
6,200.0	3.65	310.71	6,188.1	245.2	-285.0	376.0	0.00	0.00	
6,285.1	3.65	310.71	6,273.0	248.8	-289.1	381.4	0.00	0.00	WILLIAMS_FORK
6,300.0	3.65	310.71	6,287.9	249.4	-289.8	382.3	0.00	0.00	
6,400.0	3.65	310.71	6,387.7	253.5	-294.6	388.7	0.00	0.00	
6,500.0	3.65	310.71	6,487.5	257.7	-299.4	395.1	0.00	0.00	
6,600.0	3.65	310.71	6,587.3	261.8	-304.3	401.4	0.00	0.00	
6,649.5	3.65	310.71	6,636.7	263.9	-306.7	404.6	0.00	0.00	Start Drop -2.00
6,700.0	2.64	310.71	6,687.1	265.7	-308.8	407.3	2.00	-2.00	
6,800.0	0.64	310.71	6,787.1	267.6	-310.9	410.2	2.00	-2.00	
6,831.9	0.00	0.00	6,819.0	267.7	-311.1	410.4	2.00	-2.00	Start 2191.0 hold at 6831.9 MD
6,900.0	0.00	0.00	6,887.1	267.7	-311.1	410.4	0.00	0.00	
6,931.9	0.00	0.00	6,919.0	267.7	-311.1	410.4	0.00	0.00	TOP_GAS
7,000.0	0.00	0.00	6,987.1	267.7	-311.1	410.4	0.00	0.00	
7,100.0	0.00	0.00	7,087.1	267.7	-311.1	410.4	0.00	0.00	
7,200.0	0.00	0.00	7,187.1	267.7	-311.1	410.4	0.00	0.00	
7,300.0	0.00	0.00	7,287.1	267.7	-311.1	410.4	0.00	0.00	
7,400.0	0.00	0.00	7,387.1	267.7	-311.1	410.4	0.00	0.00	
7,500.0	0.00	0.00	7,487.1	267.7	-311.1	410.4	0.00	0.00	
7,600.0	0.00	0.00	7,587.1	267.7	-311.1	410.4	0.00	0.00	
7,700.0	0.00	0.00	7,687.1	267.7	-311.1	410.4	0.00	0.00	
7,800.0	0.00	0.00	7,787.1	267.7	-311.1	410.4	0.00	0.00	
7,900.0	0.00	0.00	7,887.1	267.7	-311.1	410.4	0.00	0.00	
8,000.0	0.00	0.00	7,987.1	267.7	-311.1	410.4	0.00	0.00	
8,100.0	0.00	0.00	8,087.1	267.7	-311.1	410.4	0.00	0.00	
8,200.0	0.00	0.00	8,187.1	267.7	-311.1	410.4	0.00	0.00	
8,300.0	0.00	0.00	8,287.1	267.7	-311.1	410.4	0.00	0.00	
8,400.0	0.00	0.00	8,387.1	267.7	-311.1	410.4	0.00	0.00	
8,500.0	0.00	0.00	8,487.1	267.7	-311.1	410.4	0.00	0.00	
8,600.0	0.00	0.00	8,587.1	267.7	-311.1	410.4	0.00	0.00	
8,602.9	0.00	0.00	8,590.0	267.7	-311.1	410.4	0.00	0.00	CAMEO
8,700.0	0.00	0.00	8,687.1	267.7	-311.1	410.4	0.00	0.00	
8,800.0	0.00	0.00	8,787.1	267.7	-311.1	410.4	0.00	0.00	
8,872.9	0.00	0.00	8,860.0	267.7	-311.1	410.4	0.00	0.00	ROLLINS
8,900.0	0.00	0.00	8,887.1	267.7	-311.1	410.4	0.00	0.00	
9,000.0	0.00	0.00	8,987.1	267.7	-311.1	410.4	0.00	0.00	
9,022.9	0.00	0.00	9,010.0	267.7	-311.1	410.4	0.00	0.00	TD at 9022.9 - TD

Planning Report

Database:	USA EDM 5000 Multi Users DB	Local Co-ordinate Reference:	Well PUCKETT 12B-25
Company:	Caerus Oil & Gas	TVD Reference:	30' KB @ 8406.0usft
Project:	Garfield County, CO (UTM 12N)	MD Reference:	30' KB @ 8406.0usft
Site:	S25-T6S-R97W (E25)	North Reference:	True
Well:	PUCKETT 12B-25	Survey Calculation Method:	Minimum Curvature
Wellbore:	OH		
Design:	PLAN #1		

Targets									
Target Name	Dip Angle	Dip Dir.	TVD	+N/-S	+E/-W	Northing	Easting	Latitude	Longitude
- hit/miss target	(°)	(°)	(usft)	(usft)	(usft)	(usft)	(usft)		
- Shape									
PUCKETT 12B-25 PBHL - plan hits target center - Circle (radius 50.0)	0.00	0.00	9,010.0	267.7	-311.1	14,354,985.00	2,436,939.00	39.495915	-108.176741

Formations						
Measured Depth	Vertical Depth	Name	Lithology	Dip	Dip Direction	
(usft)	(usft)			(°)	(°)	
5,992.5	5,981.0	OHIO_CREEK				
6,285.1	6,273.0	WILLIAMS_FORK				
6,931.9	6,919.0	TOP_GAS				
8,602.9	8,590.0	CAMEO				
8,872.9	8,860.0	ROLLINS				
9,022.9	9,010.0	TD				

Plan Annotations					
Measured Depth	Vertical Depth	Local Coordinates		Comment	
(usft)	(usft)	+N/-S	+E/-W		
		(usft)	(usft)		
200.0	200.0	0.0	0.0	Start Build 2.00	
382.4	382.3	3.8	-4.4	Start 6267.1 hold at 382.4 MD	
6,649.5	6,636.7	263.9	-306.7	Start Drop -2.00	
6,831.9	6,819.0	267.7	-311.1	Start 2191.0 hold at 6831.9 MD	
9,022.9	9,010.0	267.7	-311.1	TD at 9022.9	