



SECTION DETAILS

Sec	MD	Inc	Azi	TVD	+N/-S	+E/-W	Dleg	TFace	Vsect	Target
1	0.0	0.00	0.00	0.0	0.0	0.0	0.00	0.00	0.0	
2	250.0	0.00	0.00	250.0	0.0	0.0	0.00	0.00	0.0	
3	565.7	6.31	332.91	565.1	15.5	-7.9	2.00	332.91	17.4	
4	6541.8	6.31	332.91	6504.9	600.7	-307.2	0.00	0.00	674.7	
5	6857.5	0.00	0.00	6820.0	616.2	-315.1	2.00	180.00	692.1	
6	9057.5	0.00	0.00	9020.0	616.2	-315.1	0.00	0.00	692.1	PUCKETT 12A-25 PBHL

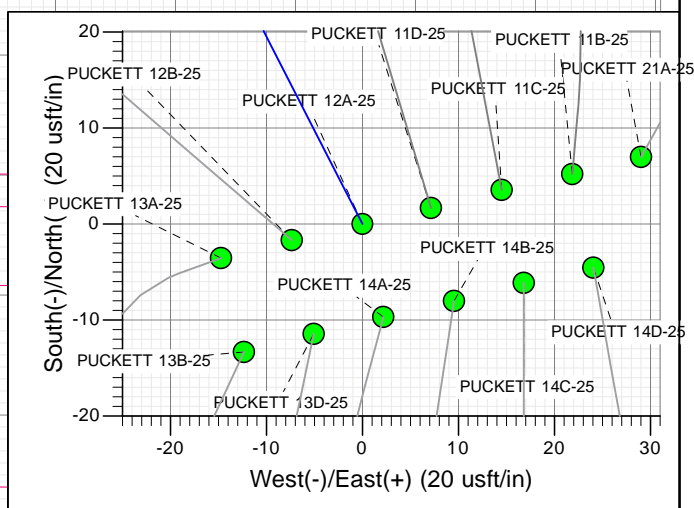
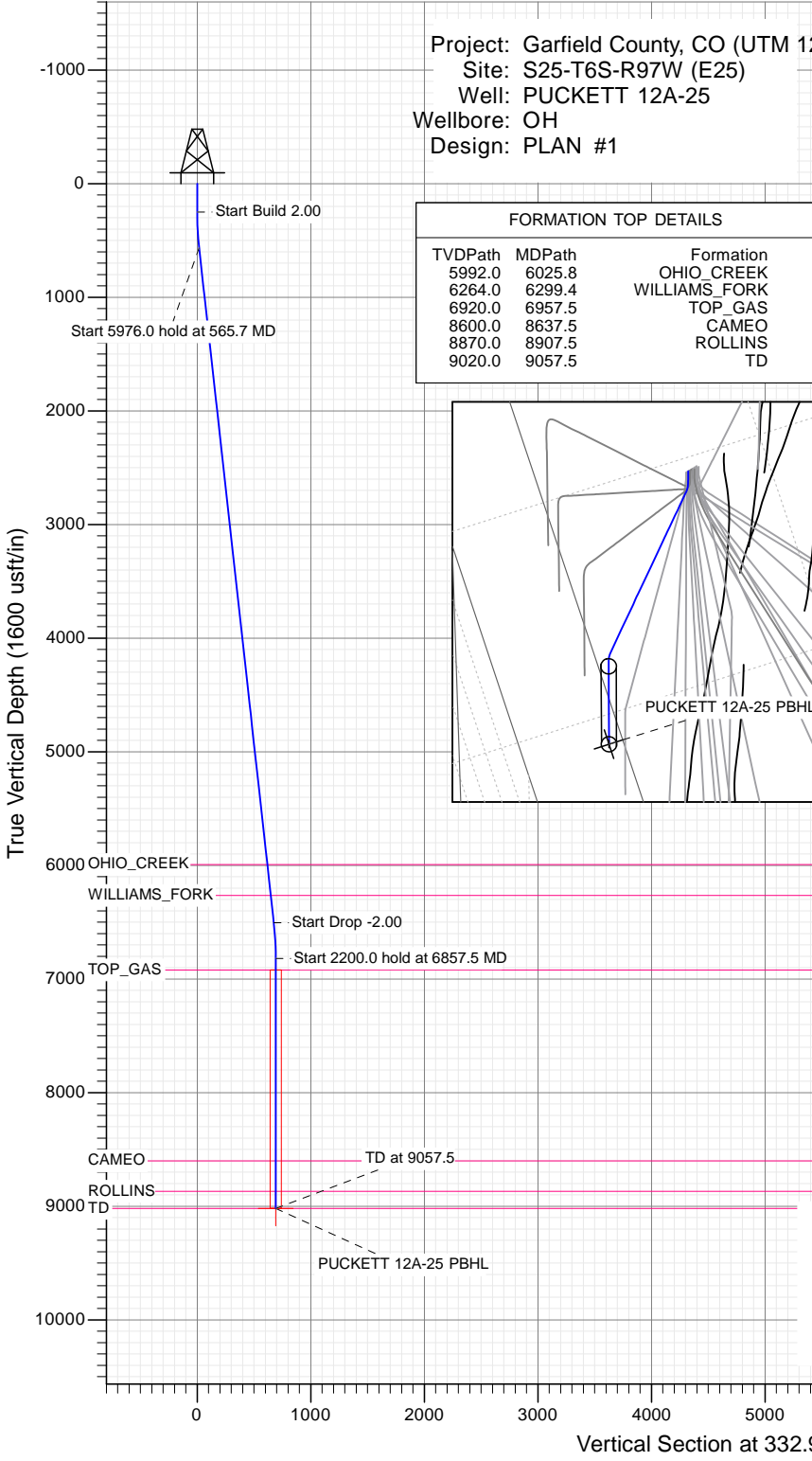
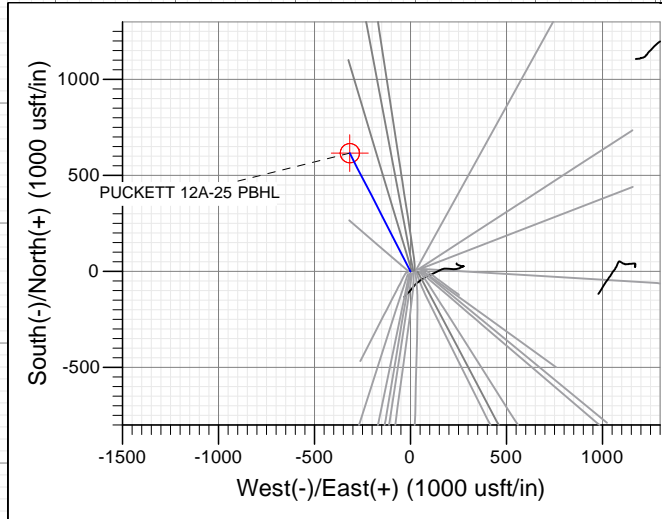
Project: Garfield County, CO (UTM 12
 Site: S25-T6S-R97W (E25)
 Well: PUCKETT 12A-25
 Wellbore: OH
 Design: PLAN #1

PLAN #1
 PUCKETT 12A-25
 15XXX LR
 30 KB @ 8406.0usft
 Ground Level @ 8376.0
 NAD 1927 - Western US
 Well PUCKETT 12A-25, True North

Type TD	Target No Target (Freehand)	Azimuth	Origin Type Slot	N/S	E/W	From TVD
Name PUCKETT 12A-25 PBHL		TVD 9020.0	+N/-S 616.2	+E/-W -315.1	Latitude 39.496876	Longitude -108.176729

FORMATION TOP DETAILS

TVDPATH	MDPATH	FORMATION
5992.0	6025.8	OHIO_CREEK
6264.0	6299.4	WILLIAMS_FORK
6920.0	6957.5	TOP_GAS
8600.0	8637.5	CAMEO
8870.0	8907.5	ROLLINS
9020.0	9057.5	TD



T M
 Azimuths to True North
 Magnetic North: 9.82°
 Magnetic Field Strength: 51888.5snT
 Dip Angle: 65.85°
 Date: 1/7/2016
 Model: HDGM

CASING DETAILS
 No casing data is available



WELL DETAILS: PUCKETT 12A-25

		Ground Level: 8376.0			
+N/-S	+E/-W	Northing	Easting	Latitude	Longitude
0.0	0.0	14354729.10	2437265.60	39.495185	-108.175613



Planning Report

Database: USA EDM 5000 Multi Users DB	Local Co-ordinate Reference: Well PUCKETT 12A-25
Company: Caerus Oil & Gas	TVD Reference: 30' KB @ 8406.0usft
Project: Garfield County, CO (UTM 12N)	MD Reference: 30' KB @ 8406.0usft
Site: S25-T6S-R97W (E25)	North Reference: True
Well: PUCKETT 12A-25	Survey Calculation Method: Minimum Curvature
Wellbore: OH	
Design: PLAN #1	

Project Garfield County, CO (UTM 12N)	
Map System: Universal Transverse Mercator (US Survey Feet)	System Datum: Mean Sea Level
Geo Datum: NAD 1927 - Western US	
Map Zone: Zone 12N (114 W to 108 W)	

Site S25-T6S-R97W (E25)		
Site Position:	Northing: 14,354,735.00 usft	Latitude: 39.495199
From: Map	Easting: 2,437,287.30 usft	Longitude: -108.175536
Position Uncertainty: 0.0 usft	Slot Radius: 13-3/16"	Grid Convergence: 1.80 °

Well PUCKETT 12A-25			
Well Position	+N/-S 0.0 usft	Northing: 14,354,729.10 usft	Latitude: 39.495185
	+E/-W 0.0 usft	Easting: 2,437,265.60 usft	Longitude: -108.175613
Position Uncertainty	0.0 usft	Wellhead Elevation: 0.0 usft	Ground Level: 8,376.0 usft

Wellbore OH					
Magnetics	Model Name	Sample Date	Declination	Dip Angle	Field Strength
	HDGM	1/7/2016	(°) 9.82	(°) 65.85	(nT) 51,889

Design PLAN #1				
Audit Notes:				
Version:	Phase: PLAN	Tie On Depth: 0.0		
Vertical Section:	Depth From (TVD)	+N/-S	+E/-W	Direction
	(usft)	(usft)	(usft)	(°)
	0.0	0.0	0.0	332.91

Plan Sections										
Measured Depth (usft)	Inclination (°)	Azimuth (°)	Vertical Depth (usft)	+N/-S (usft)	+E/-W (usft)	Dogleg Rate (°/100usft)	Build Rate (°/100usft)	Turn Rate (°/100usft)	TFO (°)	Target
0.0	0.00	0.00	0.0	0.0	0.0	0.00	0.00	0.00	0.00	
250.0	0.00	0.00	250.0	0.0	0.0	0.00	0.00	0.00	0.00	
565.7	6.31	332.91	565.1	15.5	-7.9	2.00	2.00	0.00	332.91	
6,541.8	6.31	332.91	6,504.9	600.7	-307.2	0.00	0.00	0.00	0.00	
6,857.5	0.00	0.00	6,820.0	616.2	-315.1	2.00	-2.00	0.00	180.00	
9,057.5	0.00	0.00	9,020.0	616.2	-315.1	0.00	0.00	0.00	0.00	PUCKETT 12A-25 PE

Planning Report

Database:	USA EDM 5000 Multi Users DB	Local Co-ordinate Reference:	Well PUCKETT 12A-25
Company:	Caerus Oil & Gas	TVD Reference:	30' KB @ 8406.0usft
Project:	Garfield County, CO (UTM 12N)	MD Reference:	30' KB @ 8406.0usft
Site:	S25-T6S-R97W (E25)	North Reference:	True
Well:	PUCKETT 12A-25	Survey Calculation Method:	Minimum Curvature
Wellbore:	OH		
Design:	PLAN #1		

Planned Survey									
Measured Depth (usft)	Inclination (°)	Azimuth (°)	Vertical Depth (usft)	+N/-S (usft)	+E/-W (usft)	Vertical Section (usft)	Dogleg Rate (°/100usft)	Build Rate (°/100u)	Comments / Formations
0.0	0.00	0.00	0.0	0.0	0.0	0.0	0.00	0.00	
100.0	0.00	0.00	100.0	0.0	0.0	0.0	0.00	0.00	
200.0	0.00	0.00	200.0	0.0	0.0	0.0	0.00	0.00	
250.0	0.00	0.00	250.0	0.0	0.0	0.0	0.00	0.00	Start Build 2.00
300.0	1.00	332.91	300.0	0.4	-0.2	0.4	2.00	2.00	
400.0	3.00	332.91	399.9	3.5	-1.8	3.9	2.00	2.00	
500.0	5.00	332.91	499.7	9.7	-5.0	10.9	2.00	2.00	
565.7	6.31	332.91	565.1	15.5	-7.9	17.4	2.00	2.00	Start 5976.0 hold at 565.7 MD
600.0	6.31	332.91	599.2	18.8	-9.6	21.2	0.00	0.00	
700.0	6.31	332.91	698.5	28.6	-14.6	32.1	0.00	0.00	
800.0	6.31	332.91	797.9	38.4	-19.6	43.1	0.00	0.00	
900.0	6.31	332.91	897.3	48.2	-24.7	54.1	0.00	0.00	
1,000.0	6.31	332.91	996.7	58.0	-29.7	65.1	0.00	0.00	
1,100.0	6.31	332.91	1,096.1	67.8	-34.7	76.1	0.00	0.00	
1,200.0	6.31	332.91	1,195.5	77.6	-39.7	87.1	0.00	0.00	
1,300.0	6.31	332.91	1,294.9	87.4	-44.7	98.1	0.00	0.00	
1,400.0	6.31	332.91	1,394.3	97.2	-49.7	109.1	0.00	0.00	
1,500.0	6.31	332.91	1,493.7	107.0	-54.7	120.1	0.00	0.00	
1,600.0	6.31	332.91	1,593.1	116.8	-59.7	131.1	0.00	0.00	
1,700.0	6.31	332.91	1,692.5	126.6	-64.7	142.1	0.00	0.00	
1,800.0	6.31	332.91	1,791.9	136.3	-69.7	153.1	0.00	0.00	
1,900.0	6.31	332.91	1,891.3	146.1	-74.7	164.1	0.00	0.00	
2,000.0	6.31	332.91	1,990.7	155.9	-79.7	175.1	0.00	0.00	
2,100.0	6.31	332.91	2,090.1	165.7	-84.8	186.1	0.00	0.00	
2,200.0	6.31	332.91	2,189.4	175.5	-89.8	197.1	0.00	0.00	
2,300.0	6.31	332.91	2,288.8	185.3	-94.8	208.1	0.00	0.00	
2,400.0	6.31	332.91	2,388.2	195.1	-99.8	219.1	0.00	0.00	
2,500.0	6.31	332.91	2,487.6	204.9	-104.8	230.1	0.00	0.00	
2,600.0	6.31	332.91	2,587.0	214.7	-109.8	241.1	0.00	0.00	
2,700.0	6.31	332.91	2,686.4	224.5	-114.8	252.1	0.00	0.00	
2,800.0	6.31	332.91	2,785.8	234.3	-119.8	263.1	0.00	0.00	
2,900.0	6.31	332.91	2,885.2	244.1	-124.8	274.1	0.00	0.00	
3,000.0	6.31	332.91	2,984.6	253.9	-129.8	285.1	0.00	0.00	
3,100.0	6.31	332.91	3,084.0	263.7	-134.8	296.1	0.00	0.00	
3,200.0	6.31	332.91	3,183.4	273.4	-139.8	307.1	0.00	0.00	
3,300.0	6.31	332.91	3,282.8	283.2	-144.9	318.1	0.00	0.00	
3,400.0	6.31	332.91	3,382.2	293.0	-149.9	329.1	0.00	0.00	
3,500.0	6.31	332.91	3,481.6	302.8	-154.9	340.1	0.00	0.00	
3,600.0	6.31	332.91	3,581.0	312.6	-159.9	351.1	0.00	0.00	
3,700.0	6.31	332.91	3,680.3	322.4	-164.9	362.1	0.00	0.00	
3,800.0	6.31	332.91	3,779.7	332.2	-169.9	373.1	0.00	0.00	
3,900.0	6.31	332.91	3,879.1	342.0	-174.9	384.1	0.00	0.00	
4,000.0	6.31	332.91	3,978.5	351.8	-179.9	395.1	0.00	0.00	
4,100.0	6.31	332.91	4,077.9	361.6	-184.9	406.1	0.00	0.00	
4,200.0	6.31	332.91	4,177.3	371.4	-189.9	417.1	0.00	0.00	
4,300.0	6.31	332.91	4,276.7	381.2	-194.9	428.1	0.00	0.00	
4,400.0	6.31	332.91	4,376.1	391.0	-199.9	439.1	0.00	0.00	
4,500.0	6.31	332.91	4,475.5	400.8	-205.0	450.1	0.00	0.00	
4,600.0	6.31	332.91	4,574.9	410.6	-210.0	461.1	0.00	0.00	
4,700.0	6.31	332.91	4,674.3	420.3	-215.0	472.1	0.00	0.00	
4,800.0	6.31	332.91	4,773.7	430.1	-220.0	483.1	0.00	0.00	
4,900.0	6.31	332.91	4,873.1	439.9	-225.0	494.1	0.00	0.00	

Planning Report

Database:	USA EDM 5000 Multi Users DB	Local Co-ordinate Reference:	Well PUCKETT 12A-25
Company:	Caerus Oil & Gas	TVD Reference:	30' KB @ 8406.0usft
Project:	Garfield County, CO (UTM 12N)	MD Reference:	30' KB @ 8406.0usft
Site:	S25-T6S-R97W (E25)	North Reference:	True
Well:	PUCKETT 12A-25	Survey Calculation Method:	Minimum Curvature
Wellbore:	OH		
Design:	PLAN #1		

Planned Survey

Measured Depth (usft)	Inclination (°)	Azimuth (°)	Vertical Depth (usft)	+N/-S (usft)	+E/-W (usft)	Vertical Section (usft)	Dogleg Rate (°/100usft)	Build Rate (°/100u)	Comments / Formations
5,000.0	6.31	332.91	4,972.5	449.7	-230.0	505.1	0.00	0.00	
5,100.0	6.31	332.91	5,071.8	459.5	-235.0	516.1	0.00	0.00	
5,200.0	6.31	332.91	5,171.2	469.3	-240.0	527.1	0.00	0.00	
5,300.0	6.31	332.91	5,270.6	479.1	-245.0	538.1	0.00	0.00	
5,400.0	6.31	332.91	5,370.0	488.9	-250.0	549.1	0.00	0.00	
5,500.0	6.31	332.91	5,469.4	498.7	-255.0	560.1	0.00	0.00	
5,600.0	6.31	332.91	5,568.8	508.5	-260.0	571.1	0.00	0.00	
5,700.0	6.31	332.91	5,668.2	518.3	-265.1	582.1	0.00	0.00	
5,800.0	6.31	332.91	5,767.6	528.1	-270.1	593.1	0.00	0.00	
5,900.0	6.31	332.91	5,867.0	537.9	-275.1	604.1	0.00	0.00	
6,000.0	6.31	332.91	5,966.4	547.7	-280.1	615.1	0.00	0.00	
6,025.8	6.31	332.91	5,992.0	550.2	-281.4	618.0	0.00	0.00	OHIO_CREEK
6,100.0	6.31	332.91	6,065.8	557.4	-285.1	626.1	0.00	0.00	
6,200.0	6.31	332.91	6,165.2	567.2	-290.1	637.1	0.00	0.00	
6,299.4	6.31	332.91	6,264.0	577.0	-295.1	648.1	0.00	0.00	WILLIAMS_FORK
6,300.0	6.31	332.91	6,264.6	577.0	-295.1	648.1	0.00	0.00	
6,400.0	6.31	332.91	6,364.0	586.8	-300.1	659.1	0.00	0.00	
6,500.0	6.31	332.91	6,463.4	596.6	-305.1	670.1	0.00	0.00	
6,541.8	6.31	332.91	6,504.9	600.7	-307.2	674.7	0.00	0.00	Start Drop -2.00
6,600.0	5.15	332.91	6,562.8	605.9	-309.9	680.5	2.00	-2.00	
6,700.0	3.15	332.91	6,662.5	612.3	-313.2	687.8	2.00	-2.00	
6,800.0	1.15	332.91	6,762.5	615.7	-314.9	691.5	2.00	-2.00	
6,857.5	0.00	0.00	6,820.0	616.2	-315.1	692.1	2.00	-2.00	Start 2200.0 hold at 6857.5 MD
6,900.0	0.00	0.00	6,862.5	616.2	-315.1	692.1	0.00	0.00	
6,957.5	0.00	0.00	6,920.0	616.2	-315.1	692.1	0.00	0.00	TOP_GAS
7,000.0	0.00	0.00	6,962.5	616.2	-315.1	692.1	0.00	0.00	
7,100.0	0.00	0.00	7,062.5	616.2	-315.1	692.1	0.00	0.00	
7,200.0	0.00	0.00	7,162.5	616.2	-315.1	692.1	0.00	0.00	
7,300.0	0.00	0.00	7,262.5	616.2	-315.1	692.1	0.00	0.00	
7,400.0	0.00	0.00	7,362.5	616.2	-315.1	692.1	0.00	0.00	
7,500.0	0.00	0.00	7,462.5	616.2	-315.1	692.1	0.00	0.00	
7,600.0	0.00	0.00	7,562.5	616.2	-315.1	692.1	0.00	0.00	
7,700.0	0.00	0.00	7,662.5	616.2	-315.1	692.1	0.00	0.00	
7,800.0	0.00	0.00	7,762.5	616.2	-315.1	692.1	0.00	0.00	
7,900.0	0.00	0.00	7,862.5	616.2	-315.1	692.1	0.00	0.00	
8,000.0	0.00	0.00	7,962.5	616.2	-315.1	692.1	0.00	0.00	
8,100.0	0.00	0.00	8,062.5	616.2	-315.1	692.1	0.00	0.00	
8,200.0	0.00	0.00	8,162.5	616.2	-315.1	692.1	0.00	0.00	
8,300.0	0.00	0.00	8,262.5	616.2	-315.1	692.1	0.00	0.00	
8,400.0	0.00	0.00	8,362.5	616.2	-315.1	692.1	0.00	0.00	
8,500.0	0.00	0.00	8,462.5	616.2	-315.1	692.1	0.00	0.00	
8,600.0	0.00	0.00	8,562.5	616.2	-315.1	692.1	0.00	0.00	
8,637.5	0.00	0.00	8,600.0	616.2	-315.1	692.1	0.00	0.00	CAMEO
8,700.0	0.00	0.00	8,662.5	616.2	-315.1	692.1	0.00	0.00	
8,800.0	0.00	0.00	8,762.5	616.2	-315.1	692.1	0.00	0.00	
8,900.0	0.00	0.00	8,862.5	616.2	-315.1	692.1	0.00	0.00	
8,907.5	0.00	0.00	8,870.0	616.2	-315.1	692.1	0.00	0.00	ROLLINS
9,000.0	0.00	0.00	8,962.5	616.2	-315.1	692.1	0.00	0.00	
9,057.5	0.00	0.00	9,020.0	616.2	-315.1	692.1	0.00	0.00	TD at 9057.5 - TD

Planning Report

Database:	USA EDM 5000 Multi Users DB	Local Co-ordinate Reference:	Well PUCKETT 12A-25
Company:	Caerus Oil & Gas	TVD Reference:	30' KB @ 8406.0usft
Project:	Garfield County, CO (UTM 12N)	MD Reference:	30' KB @ 8406.0usft
Site:	S25-T6S-R97W (E25)	North Reference:	True
Well:	PUCKETT 12A-25	Survey Calculation Method:	Minimum Curvature
Wellbore:	OH		
Design:	PLAN #1		

Targets									
Target Name	Dip Angle	Dip Dir.	TVD	+N/-S	+E/-W	Northing	Easting	Latitude	Longitude
- hit/miss target	(°)	(°)	(usft)	(usft)	(usft)	(usft)	(usft)		
- Shape									
PUCKETT 12A-25 PBHL - plan hits target center - Circle (radius 50.0)	0.00	0.00	9,020.0	616.2	-315.1	14,355,335.10	2,436,931.30	39.496876	-108.176729

Formations						
Measured Depth	Vertical Depth	Name	Lithology	Dip	Dip Direction	
(usft)	(usft)			(°)	(°)	
6,025.8	5,992.0	OHIO_CREEK				
6,299.4	6,264.0	WILLIAMS_FORK				
6,957.5	6,920.0	TOP_GAS				
8,637.5	8,600.0	CAMEO				
8,907.5	8,870.0	ROLLINS				
9,057.5	9,020.0	TD				

Plan Annotations					
Measured Depth	Vertical Depth	Local Coordinates		Comment	
(usft)	(usft)	+N/-S	+E/-W		
		(usft)	(usft)		
250.0	250.0	0.0	0.0	Start Build 2.00	
565.7	565.1	15.5	-7.9	Start 5976.0 hold at 565.7 MD	
6,541.8	6,504.9	600.7	-307.2	Start Drop -2.00	
6,857.5	6,820.0	616.2	-315.1	Start 2200.0 hold at 6857.5 MD	
9,057.5	9,020.0	616.2	-315.1	TD at 9057.5	