



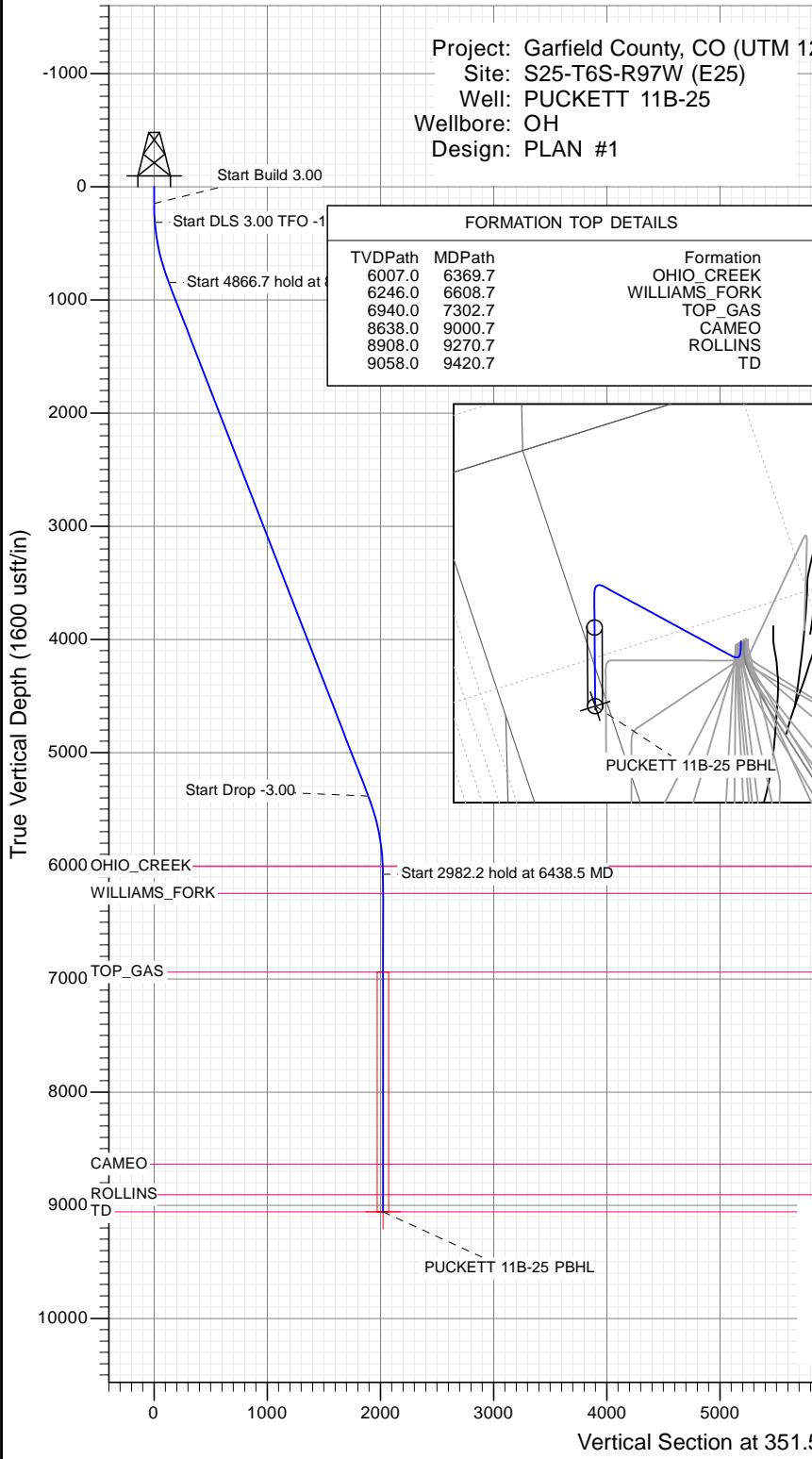
SECTION DETAILS

Sec	MD	Inc	Azi	TVD	+N/-S	+E/-W	Dleg	TFace	Vsect	Target
1	0.0	0.00	0.00	0.0	0.0	0.0	0.00	0.00	0.0	
2	150.0	0.00	0.00	150.0	0.0	0.0	0.00	0.00	0.0	
3	316.7	5.00	5.00	316.5	7.2	0.6	3.00	5.00	7.1	
4	863.9	21.23	351.30	847.7	129.8	-12.4	3.00	-17.67	130.2	
5	5730.7	21.23	351.30	5384.0	1872.2	-279.1	0.00	0.00	1892.9	
6	6438.5	0.00	0.00	6075.8	2000.4	-298.7	3.00	180.00	2022.5	
7	9420.7	0.00	0.00	9058.0	2000.4	-298.7	0.00	0.00	2022.5	PUCKETT 11B-25 PBHL

Project: Garfield County, CO (UTM 12  
 Site: S25-T6S-R97W (E25)  
 Well: PUCKETT 11B-25  
 Wellbore: OH  
 Design: PLAN #1

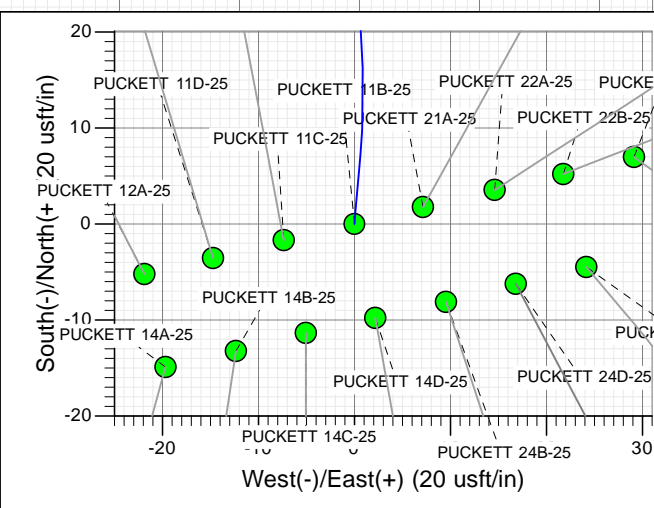
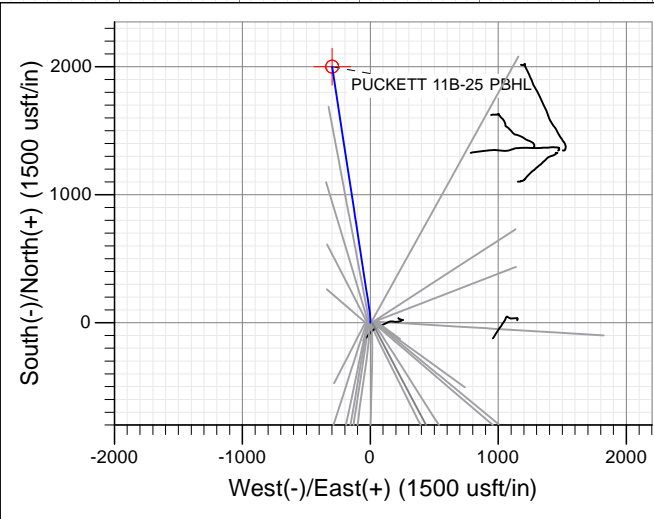
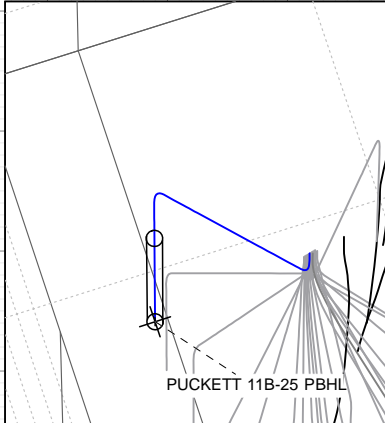
PLAN #1  
 PUCKETT 11B-25  
 15XXX LR  
 30 KB @ 8406.0usft  
 Ground Level @ 8376.0  
 NAD 1927 - Western US  
 Well PUCKETT 11B-25, True North

Type	Target	Azimuth	Origin Type	N/S	E/W	From TVD
TD	No Target (Freehand)	351.51	Slot	0.0	0.0	0.0
Name		TVD	+N/-S	+E/-W	Latitude	Longitude
PUCKETT 11B-25 PBHL		9058.0	2000.4	-298.7	39.500689	-108.176594



FORMATION TOP DETAILS

TVDPATH	MDPATH	Formation
6007.0	6369.7	OHIO_CREEK
6246.0	6608.7	WILLIAMS_FORK
6940.0	7302.7	TOP_GAS
8638.0	9000.7	CAMEO
8908.0	9270.7	ROLLINS
9058.0	9420.7	TD



**T M**  
 Azimuths to True North  
 Magnetic North: 9.82°  
 Magnetic Field  
 Strength: 51888.5snT  
 Dip Angle: 65.85°  
 Date: 1/7/2016  
 Model: HDGM

CASING DETAILS  
 No casing data is available



WELL DETAILS: PUCKETT 11B-25

		Ground Level: 8376.0			
+N/-S	+E/-W	Northing	Easting	Latitude	Longitude
0.0	0.0	14354735.00	2437287.30	39.495199	-108.175536



## Planning Report

<b>Database:</b> USA EDM 5000 Multi Users DB	<b>Local Co-ordinate Reference:</b> Well PUCKETT 11B-25
<b>Company:</b> Caerus Oil & Gas	<b>TVD Reference:</b> 30' KB @ 8406.0usft
<b>Project:</b> Garfield County, CO (UTM 12N)	<b>MD Reference:</b> 30' KB @ 8406.0usft
<b>Site:</b> S25-T6S-R97W (E25)	<b>North Reference:</b> True
<b>Well:</b> PUCKETT 11B-25	<b>Survey Calculation Method:</b> Minimum Curvature
<b>Wellbore:</b> OH	
<b>Design:</b> PLAN #1	

<b>Project</b> Garfield County, CO (UTM 12N)	
<b>Map System:</b> Universal Transverse Mercator (US Survey Feet)	<b>System Datum:</b> Mean Sea Level
<b>Geo Datum:</b> NAD 1927 - Western US	
<b>Map Zone:</b> Zone 12N (114 W to 108 W)	

<b>Site</b> S25-T6S-R97W (E25)		
<b>Site Position:</b>	<b>Northing:</b> 14,354,735.00 usft	<b>Latitude:</b> 39.495199
<b>From:</b> Map	<b>Easting:</b> 2,437,287.30 usft	<b>Longitude:</b> -108.175536
<b>Position Uncertainty:</b> 0.0 usft	<b>Slot Radius:</b> 13-3/16"	<b>Grid Convergence:</b> 1.80 °

<b>Well</b> PUCKETT 11B-25			
<b>Well Position</b>	<b>+N/-S</b> 0.0 usft	<b>Northing:</b> 14,354,735.00 usft	<b>Latitude:</b> 39.495199
	<b>+E/-W</b> 0.0 usft	<b>Easting:</b> 2,437,287.30 usft	<b>Longitude:</b> -108.175536
<b>Position Uncertainty</b>	0.0 usft	<b>Wellhead Elevation:</b> 0.0 usft	<b>Ground Level:</b> 8,376.0 usft

<b>Wellbore</b> OH					
<b>Magnetics</b>	<b>Model Name</b>	<b>Sample Date</b>	<b>Declination</b>	<b>Dip Angle</b>	<b>Field Strength</b>
	HDGM	1/7/2016	(°) 9.82	(°) 65.85	(nT) 51,889

<b>Design</b> PLAN #1				
<b>Audit Notes:</b>				
<b>Version:</b>	<b>Phase:</b> PLAN	<b>Tie On Depth:</b> 0.0		
<b>Vertical Section:</b>	<b>Depth From (TVD)</b>	<b>+N/-S</b>	<b>+E/-W</b>	<b>Direction</b>
	(usft)	(usft)	(usft)	(°)
	0.0	0.0	0.0	351.51

<b>Plan Sections</b>										
Measured Depth (usft)	Inclination (°)	Azimuth (°)	Vertical Depth (usft)	+N/-S (usft)	+E/-W (usft)	Dogleg Rate (°/100usft)	Build Rate (°/100usft)	Turn Rate (°/100usft)	TFO (°)	Target
0.0	0.00	0.00	0.0	0.0	0.0	0.00	0.00	0.00	0.00	
150.0	0.00	0.00	150.0	0.0	0.0	0.00	0.00	0.00	0.00	
316.7	5.00	5.00	316.5	7.2	0.6	3.00	3.00	0.00	5.00	
863.9	21.23	351.30	847.7	129.8	-12.4	3.00	2.97	-2.50	-17.67	
5,730.7	21.23	351.30	5,384.0	1,872.2	-279.1	0.00	0.00	0.00	0.00	
6,438.5	0.00	0.00	6,075.8	2,000.4	-298.7	3.00	-3.00	0.00	180.00	
9,420.7	0.00	0.00	9,058.0	2,000.4	-298.7	0.00	0.00	0.00	0.00	PUCKETT 11B-25 PB

Planning Report

<b>Database:</b>	USA EDM 5000 Multi Users DB	<b>Local Co-ordinate Reference:</b>	Well PUCKETT 11B-25
<b>Company:</b>	Caerus Oil & Gas	<b>TVD Reference:</b>	30' KB @ 8406.0usft
<b>Project:</b>	Garfield County, CO (UTM 12N)	<b>MD Reference:</b>	30' KB @ 8406.0usft
<b>Site:</b>	S25-T6S-R97W (E25)	<b>North Reference:</b>	True
<b>Well:</b>	PUCKETT 11B-25	<b>Survey Calculation Method:</b>	Minimum Curvature
<b>Wellbore:</b>	OH		
<b>Design:</b>	PLAN #1		

Planned Survey									
Measured Depth (usft)	Inclination (°)	Azimuth (°)	Vertical Depth (usft)	+N/-S (usft)	+E/-W (usft)	Vertical Section (usft)	Dogleg Rate (°/100usft)	Build Rate (°/100u)	Comments / Formations
0.0	0.00	0.00	0.0	0.0	0.0	0.0	0.00	0.00	
100.0	0.00	0.00	100.0	0.0	0.0	0.0	0.00	0.00	
150.0	0.00	0.00	150.0	0.0	0.0	0.0	0.00	0.00	Start Build 3.00
200.0	1.50	5.00	200.0	0.7	0.1	0.6	3.00	3.00	
300.0	4.50	5.00	299.8	5.9	0.5	5.7	3.00	3.00	
316.7	5.00	5.00	316.5	7.2	0.6	7.1	3.00	3.00	Start DLS 3.00 TFO -17.67
400.0	7.42	359.12	399.3	16.2	0.9	15.9	3.00	2.91	
500.0	10.38	355.70	498.1	31.7	0.1	31.3	3.00	2.95	
600.0	13.35	353.79	595.9	52.1	-1.8	51.8	3.00	2.97	
700.0	16.33	352.57	692.6	77.6	-4.9	77.4	3.00	2.98	
800.0	19.32	351.72	787.8	107.9	-9.1	108.1	3.00	2.99	
863.9	21.23	351.30	847.7	129.8	-12.4	130.2	3.00	2.99	Start 4866.7 hold at 863.9 MD
900.0	21.23	351.30	881.4	142.7	-14.3	143.3	0.00	0.00	
1,000.0	21.23	351.30	974.6	178.5	-19.8	179.5	0.00	0.00	
1,100.0	21.23	351.30	1,067.8	214.3	-25.3	215.7	0.00	0.00	
1,200.0	21.23	351.30	1,161.0	250.1	-30.8	251.9	0.00	0.00	
1,300.0	21.23	351.30	1,254.2	285.9	-36.3	288.1	0.00	0.00	
1,400.0	21.23	351.30	1,347.4	321.7	-41.8	324.4	0.00	0.00	
1,500.0	21.23	351.30	1,440.6	357.5	-47.2	360.6	0.00	0.00	
1,600.0	21.23	351.30	1,533.8	393.3	-52.7	396.8	0.00	0.00	
1,700.0	21.23	351.30	1,627.0	429.1	-58.2	433.0	0.00	0.00	
1,800.0	21.23	351.30	1,720.3	464.9	-63.7	469.2	0.00	0.00	
1,900.0	21.23	351.30	1,813.5	500.7	-69.2	505.5	0.00	0.00	
2,000.0	21.23	351.30	1,906.7	536.5	-74.6	541.7	0.00	0.00	
2,100.0	21.23	351.30	1,999.9	572.3	-80.1	577.9	0.00	0.00	
2,200.0	21.23	351.30	2,093.1	608.1	-85.6	614.1	0.00	0.00	
2,300.0	21.23	351.30	2,186.3	643.9	-91.1	650.3	0.00	0.00	
2,400.0	21.23	351.30	2,279.5	679.7	-96.6	686.5	0.00	0.00	
2,500.0	21.23	351.30	2,372.7	715.5	-102.0	722.8	0.00	0.00	
2,600.0	21.23	351.30	2,465.9	751.3	-107.5	759.0	0.00	0.00	
2,700.0	21.23	351.30	2,559.1	787.1	-113.0	795.2	0.00	0.00	
2,800.0	21.23	351.30	2,652.4	823.0	-118.5	831.4	0.00	0.00	
2,900.0	21.23	351.30	2,745.6	858.8	-124.0	867.6	0.00	0.00	
3,000.0	21.23	351.30	2,838.8	894.6	-129.4	903.9	0.00	0.00	
3,100.0	21.23	351.30	2,932.0	930.4	-134.9	940.1	0.00	0.00	
3,200.0	21.23	351.30	3,025.2	966.2	-140.4	976.3	0.00	0.00	
3,300.0	21.23	351.30	3,118.4	1,002.0	-145.9	1,012.5	0.00	0.00	
3,400.0	21.23	351.30	3,211.6	1,037.8	-151.4	1,048.7	0.00	0.00	
3,500.0	21.23	351.30	3,304.8	1,073.6	-156.8	1,085.0	0.00	0.00	
3,600.0	21.23	351.30	3,398.0	1,109.4	-162.3	1,121.2	0.00	0.00	
3,700.0	21.23	351.30	3,491.3	1,145.2	-167.8	1,157.4	0.00	0.00	
3,800.0	21.23	351.30	3,584.5	1,181.0	-173.3	1,193.6	0.00	0.00	
3,900.0	21.23	351.30	3,677.7	1,216.8	-178.8	1,229.8	0.00	0.00	
4,000.0	21.23	351.30	3,770.9	1,252.6	-184.2	1,266.0	0.00	0.00	
4,100.0	21.23	351.30	3,864.1	1,288.4	-189.7	1,302.3	0.00	0.00	
4,200.0	21.23	351.30	3,957.3	1,324.2	-195.2	1,338.5	0.00	0.00	
4,300.0	21.23	351.30	4,050.5	1,360.0	-200.7	1,374.7	0.00	0.00	
4,400.0	21.23	351.30	4,143.7	1,395.8	-206.2	1,410.9	0.00	0.00	
4,500.0	21.23	351.30	4,236.9	1,431.6	-211.6	1,447.1	0.00	0.00	
4,600.0	21.23	351.30	4,330.1	1,467.4	-217.1	1,483.4	0.00	0.00	
4,700.0	21.23	351.30	4,423.4	1,503.2	-222.6	1,519.6	0.00	0.00	
4,800.0	21.23	351.30	4,516.6	1,539.0	-228.1	1,555.8	0.00	0.00	

## Planning Report

<b>Database:</b>	USA EDM 5000 Multi Users DB	<b>Local Co-ordinate Reference:</b>	Well PUCKETT 11B-25
<b>Company:</b>	Caerus Oil & Gas	<b>TVD Reference:</b>	30' KB @ 8406.0usft
<b>Project:</b>	Garfield County, CO (UTM 12N)	<b>MD Reference:</b>	30' KB @ 8406.0usft
<b>Site:</b>	S25-T6S-R97W (E25)	<b>North Reference:</b>	True
<b>Well:</b>	PUCKETT 11B-25	<b>Survey Calculation Method:</b>	Minimum Curvature
<b>Wellbore:</b>	OH		
<b>Design:</b>	PLAN #1		

Planned Survey									
Measured Depth (usft)	Inclination (°)	Azimuth (°)	Vertical Depth (usft)	+N/-S (usft)	+E/-W (usft)	Vertical Section (usft)	Dogleg Rate (°/100usft)	Build Rate (°/100u)	Comments / Formations
4,900.0	21.23	351.30	4,609.8	1,574.8	-233.6	1,592.0	0.00	0.00	
5,000.0	21.23	351.30	4,703.0	1,610.6	-239.0	1,628.2	0.00	0.00	
5,100.0	21.23	351.30	4,796.2	1,646.4	-244.5	1,664.4	0.00	0.00	
5,200.0	21.23	351.30	4,889.4	1,682.2	-250.0	1,700.7	0.00	0.00	
5,300.0	21.23	351.30	4,982.6	1,718.0	-255.5	1,736.9	0.00	0.00	
5,400.0	21.23	351.30	5,075.8	1,753.8	-261.0	1,773.1	0.00	0.00	
5,500.0	21.23	351.30	5,169.0	1,789.6	-266.4	1,809.3	0.00	0.00	
5,600.0	21.23	351.30	5,262.3	1,825.4	-271.9	1,845.5	0.00	0.00	
5,700.0	21.23	351.30	5,355.5	1,861.2	-277.4	1,881.8	0.00	0.00	
5,730.7	21.23	351.30	5,384.0	1,872.2	-279.1	1,892.9	0.00	0.00	Start Drop -3.00
5,800.0	19.15	351.30	5,449.1	1,895.8	-282.7	1,916.8	3.00	-3.00	
5,900.0	16.15	351.30	5,544.4	1,925.8	-287.3	1,947.1	3.00	-3.00	
6,000.0	13.15	351.30	5,641.1	1,950.8	-291.1	1,972.4	3.00	-3.00	
6,100.0	10.15	351.30	5,739.1	1,970.8	-294.2	1,992.6	3.00	-3.00	
6,200.0	7.15	351.30	5,837.9	1,985.7	-296.5	2,007.7	3.00	-3.00	
6,300.0	4.15	351.30	5,937.4	1,995.4	-297.9	2,017.5	3.00	-3.00	
6,369.7	2.06	351.30	6,007.0	1,999.1	-298.5	2,021.3	3.00	-3.00	OHIO_CREEK
6,400.0	1.15	351.30	6,037.3	2,000.0	-298.6	2,022.1	3.00	-3.00	
6,438.5	0.00	0.00	6,075.8	2,000.4	-298.7	2,022.5	3.00	-3.00	Start 2982.2 hold at 6438.5 MD
6,500.0	0.00	0.00	6,137.3	2,000.4	-298.7	2,022.5	0.00	0.00	
6,600.0	0.00	0.00	6,237.3	2,000.4	-298.7	2,022.5	0.00	0.00	
6,608.7	0.00	0.00	6,246.0	2,000.4	-298.7	2,022.5	0.00	0.00	WILLIAMS_FORK
6,700.0	0.00	0.00	6,337.3	2,000.4	-298.7	2,022.5	0.00	0.00	
6,800.0	0.00	0.00	6,437.3	2,000.4	-298.7	2,022.5	0.00	0.00	
6,900.0	0.00	0.00	6,537.3	2,000.4	-298.7	2,022.5	0.00	0.00	
7,000.0	0.00	0.00	6,637.3	2,000.4	-298.7	2,022.5	0.00	0.00	
7,100.0	0.00	0.00	6,737.3	2,000.4	-298.7	2,022.5	0.00	0.00	
7,200.0	0.00	0.00	6,837.3	2,000.4	-298.7	2,022.5	0.00	0.00	
7,300.0	0.00	0.00	6,937.3	2,000.4	-298.7	2,022.5	0.00	0.00	
7,302.7	0.00	0.00	6,940.0	2,000.4	-298.7	2,022.5	0.00	0.00	TOP_GAS
7,400.0	0.00	0.00	7,037.3	2,000.4	-298.7	2,022.5	0.00	0.00	
7,500.0	0.00	0.00	7,137.3	2,000.4	-298.7	2,022.5	0.00	0.00	
7,600.0	0.00	0.00	7,237.3	2,000.4	-298.7	2,022.5	0.00	0.00	
7,700.0	0.00	0.00	7,337.3	2,000.4	-298.7	2,022.5	0.00	0.00	
7,800.0	0.00	0.00	7,437.3	2,000.4	-298.7	2,022.5	0.00	0.00	
7,900.0	0.00	0.00	7,537.3	2,000.4	-298.7	2,022.5	0.00	0.00	
8,000.0	0.00	0.00	7,637.3	2,000.4	-298.7	2,022.5	0.00	0.00	
8,100.0	0.00	0.00	7,737.3	2,000.4	-298.7	2,022.5	0.00	0.00	
8,200.0	0.00	0.00	7,837.3	2,000.4	-298.7	2,022.5	0.00	0.00	
8,300.0	0.00	0.00	7,937.3	2,000.4	-298.7	2,022.5	0.00	0.00	
8,400.0	0.00	0.00	8,037.3	2,000.4	-298.7	2,022.5	0.00	0.00	
8,500.0	0.00	0.00	8,137.3	2,000.4	-298.7	2,022.5	0.00	0.00	
8,600.0	0.00	0.00	8,237.3	2,000.4	-298.7	2,022.5	0.00	0.00	
8,700.0	0.00	0.00	8,337.3	2,000.4	-298.7	2,022.5	0.00	0.00	
8,800.0	0.00	0.00	8,437.3	2,000.4	-298.7	2,022.5	0.00	0.00	
8,900.0	0.00	0.00	8,537.3	2,000.4	-298.7	2,022.5	0.00	0.00	
9,000.0	0.00	0.00	8,637.3	2,000.4	-298.7	2,022.5	0.00	0.00	
9,000.7	0.00	0.00	8,638.0	2,000.4	-298.7	2,022.5	0.00	0.00	CAMEO
9,100.0	0.00	0.00	8,737.3	2,000.4	-298.7	2,022.5	0.00	0.00	
9,200.0	0.00	0.00	8,837.3	2,000.4	-298.7	2,022.5	0.00	0.00	
9,270.7	0.00	0.00	8,908.0	2,000.4	-298.7	2,022.5	0.00	0.00	ROLLINS
9,300.0	0.00	0.00	8,937.3	2,000.4	-298.7	2,022.5	0.00	0.00	

## Planning Report

<b>Database:</b>	USA EDM 5000 Multi Users DB	<b>Local Co-ordinate Reference:</b>	Well PUCKETT 11B-25
<b>Company:</b>	Caerus Oil & Gas	<b>TVD Reference:</b>	30' KB @ 8406.0usft
<b>Project:</b>	Garfield County, CO (UTM 12N)	<b>MD Reference:</b>	30' KB @ 8406.0usft
<b>Site:</b>	S25-T6S-R97W (E25)	<b>North Reference:</b>	True
<b>Well:</b>	PUCKETT 11B-25	<b>Survey Calculation Method:</b>	Minimum Curvature
<b>Wellbore:</b>	OH		
<b>Design:</b>	PLAN #1		

Planned Survey									
Measured Depth (usft)	Inclination (°)	Azimuth (°)	Vertical Depth (usft)	+N/-S (usft)	+E/-W (usft)	Vertical Section (usft)	Dogleg Rate (°/100usft)	Build Rate (°/100u)	Comments / Formations
9,400.0	0.00	0.00	9,037.3	2,000.4	-298.7	2,022.5	0.00	0.00	
9,420.7	0.00	0.00	9,058.0	2,000.4	-298.7	2,022.5	0.00	0.00	TD at 9420.7 - TD

Targets									
Target Name	Dip Angle (°)	Dip Dir. (°)	TVD (usft)	+N/-S (usft)	+E/-W (usft)	Northing (usft)	Easting (usft)	Latitude	Longitude
PUCKETT 11B-25 PBHL - hit/miss target - Shape - plan hits target center - Circle (radius 50.0)	0.00	0.00	9,058.0	2,000.4	-298.7	14,356,725.00	2,436,926.00	39.500689	-108.176594

Formations						
Measured Depth (usft)	Vertical Depth (usft)	Name	Lithology	Dip (°)	Dip Direction (°)	
6,369.7	6,007.0	OHIO_CREEK				
6,608.7	6,246.0	WILLIAMS_FORK				
7,302.7	6,940.0	TOP_GAS				
9,000.7	8,638.0	CAMEO				
9,270.7	8,908.0	ROLLINS				
9,420.7	9,058.0	TD				

Plan Annotations					
Measured Depth (usft)	Vertical Depth (usft)	Local Coordinates		Comment	
		+N/-S (usft)	+E/-W (usft)		
150.0	150.0	0.0	0.0	Start Build 3.00	
316.7	316.5	7.2	0.6	Start DLS 3.00 TFO -17.67	
863.9	847.7	129.8	-12.4	Start 4866.7 hold at 863.9 MD	
5,730.7	5,384.0	1,872.2	-279.1	Start Drop -3.00	
6,438.5	6,075.8	2,000.4	-298.7	Start 2982.2 hold at 6438.5 MD	
9,420.7	9,058.0	2,000.4	-298.7	TD at 9420.7	