



photo 1: Aerial image of the location (6/2014).



photo 2: Facing south toward the location.



photo 3: One of three pipe risers that remain at the location. Lat/Long:37.87791,-102.72652.



photo 4: East side of the location facing east toward the access road.



photo 5: East side of the location facing west. Note: vegetation has not established in this



photo 6: South side of the location facing north.



photo 7: One of three pipe risers that remain at the location. Lat/Long:37.87777,-102.72652.



photo 8: One of three pipe risers that remain at the location. Lat/Long:37.87786,-102.72713.



photo 9: West side of the location facing east.

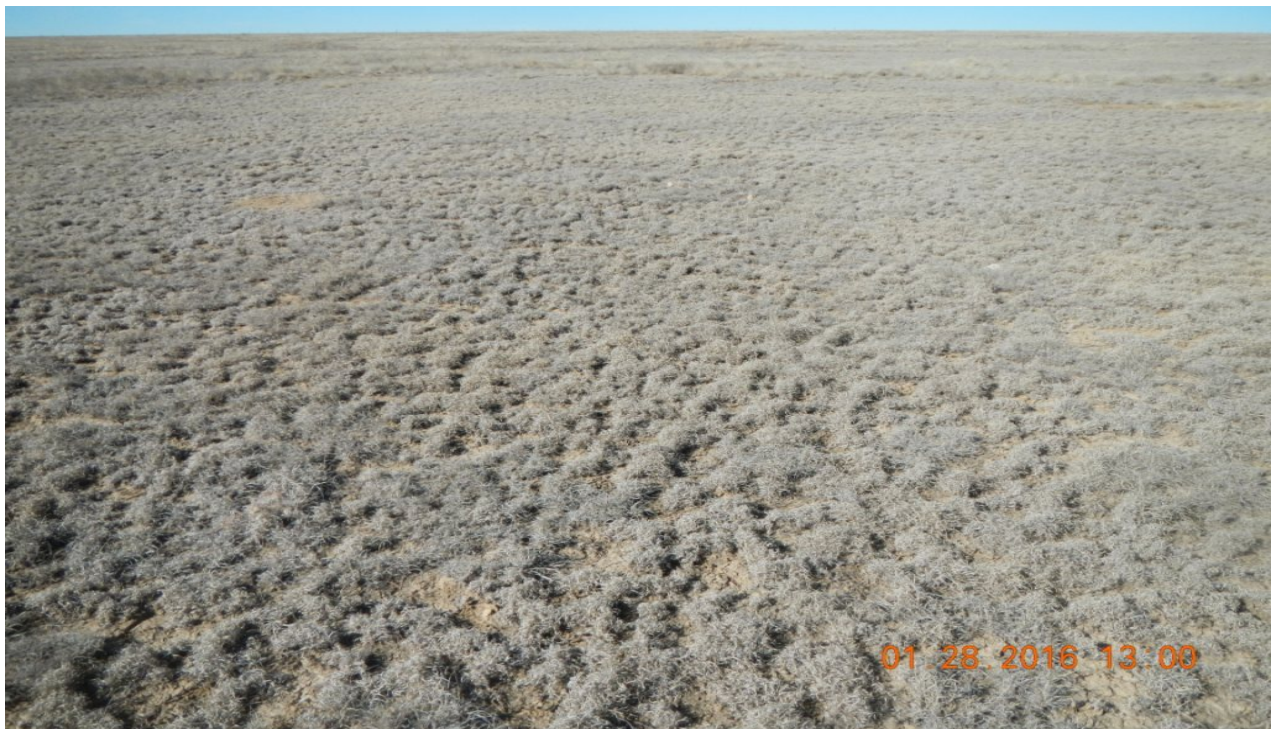


photo 10: Facing west toward the surrounding undisturbed pasture. Reference area.