

MULTI WELL PLAN: HOPPER 16C-22HZ

SECTIONS 3, 10, 15 & 22, TOWNSHIP 2 NORTH, RANGE 68 WEST, 6TH P.M.
SECTION 34, TOWNSHIP 3 NORTH, RANGE 68 WEST, 6TH P.M.

HOPPER 37N-22HZ

SURFACE: 2361' FSL, 1015' FEL, SECTION 15
BOTTOM HOLE: 467' FSL, 1466' FEL, SECTION 22

HOPPER STATE 24N-34SLHZ

SURFACE: 2361' FSL, 1000' FEL, SECTION 15
BOTTOM HOLE: 1135' FSL, 1549' FEL, SECTION 34

HOPPER 16C-22HZ

SURFACE: 2361' FSL, 970' FEL, SECTION 15
BOTTOM HOLE: 461' FSL, 916' FEL, SECTION 22

HOPPER STATE 9N-34SLHZ

SURFACE: 2361' FSL, 955' FEL, SECTION 15
BOTTOM HOLE: 1512' FSL, 1011' FEL, SECTION 34

HOPPER STATE 40N-34SLHZ

SURFACE: 2361' FSL, 925' FEL, SECTION 15
BOTTOM HOLE: 1511' FSL, 389' FEL, SECTION 34

HOPPER 38N-22HZ

SURFACE: 2361' FSL, 910' FEL, SECTION 15
BOTTOM HOLE: 461' FSL, 511' FEL, SECTION 22

LEGEND

- ⊕ = EXISTING MONUMENT
- ⊙ = CALCULATED CORNER
- ⊙ = PROPOSED WELL
- ⋄ = BOTTOM HOLE
- = HEEL LOCATION



0' 2000'
SCALE: 1"=2000'

PREPARED FOR:



Kerr-McGee Oil & Gas Onshore L.P.
1099 18th Street
Denver, Colorado 80202

Acklam, Inc.

MULTI WELL PLAN - HOPPER 16C-22HZ

DATE SURVEYED: 06/15/2015

DATE DRAFTED: 08/05/2015

DRAFTED BY: SMF CHK BY: JAM

JOB No. 155003 REVISED: 11/12/2015

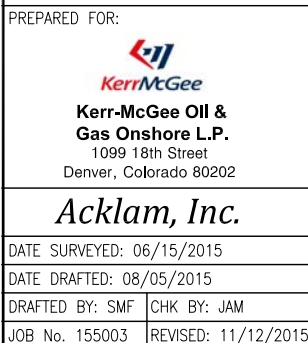
SURFACE LOCATION

NE1/4 SE1/4 SECTION 15, T2N, R68W, 6TH P.M.
WELD COUNTY, COLORADO

NOTICE: According to Colorado law you must commence any legal action based upon any defect in this survey within three years after you first discover such defect. In no event may any action based upon any defect in this survey be commenced more than ten years from the date of the certification shown hereon.

SHEET 1 OF 2

SECTIONS 3, 10, 15 & 22, TOWNSHIP 2 NORTH, RANGE 68 WEST, 6TH P.M.
SECTION 34, TOWNSHIP 3 NORTH, RANGE 68 WEST, 6TH P.M.



SURFACE LOCATION
NE1/4 SE1/4 SECTION 15, T2N, R68W, 6TH P.M.
WELD COUNTY, COLORADO

NOTICE: According to Colorado law you must commence any legal action based upon any defect in this survey within three years after you first discover such defect. In no event may any action based upon any defect in this survey be commenced more than ten years from the date of the certification shown hereon.