

US ROCKIES WATTENBERG PLANNING

WELD-NAD83-UTMFT13N

2N-68W-15 Camenisch 7-15 Pad

CAMENISCH STATE 15N-3HZ

Plan A

Plan: Permit Rev-1

Standard Planning Report

22 September, 2015

Project: WELD-NAD83-UTMFT13N
Site: 2N-68W-15 Camenisch 7-15 Pad
Well: CAMENISCH STATE 15N-3HZ
Wellbore: Plan A
Design: Permit Rev-1

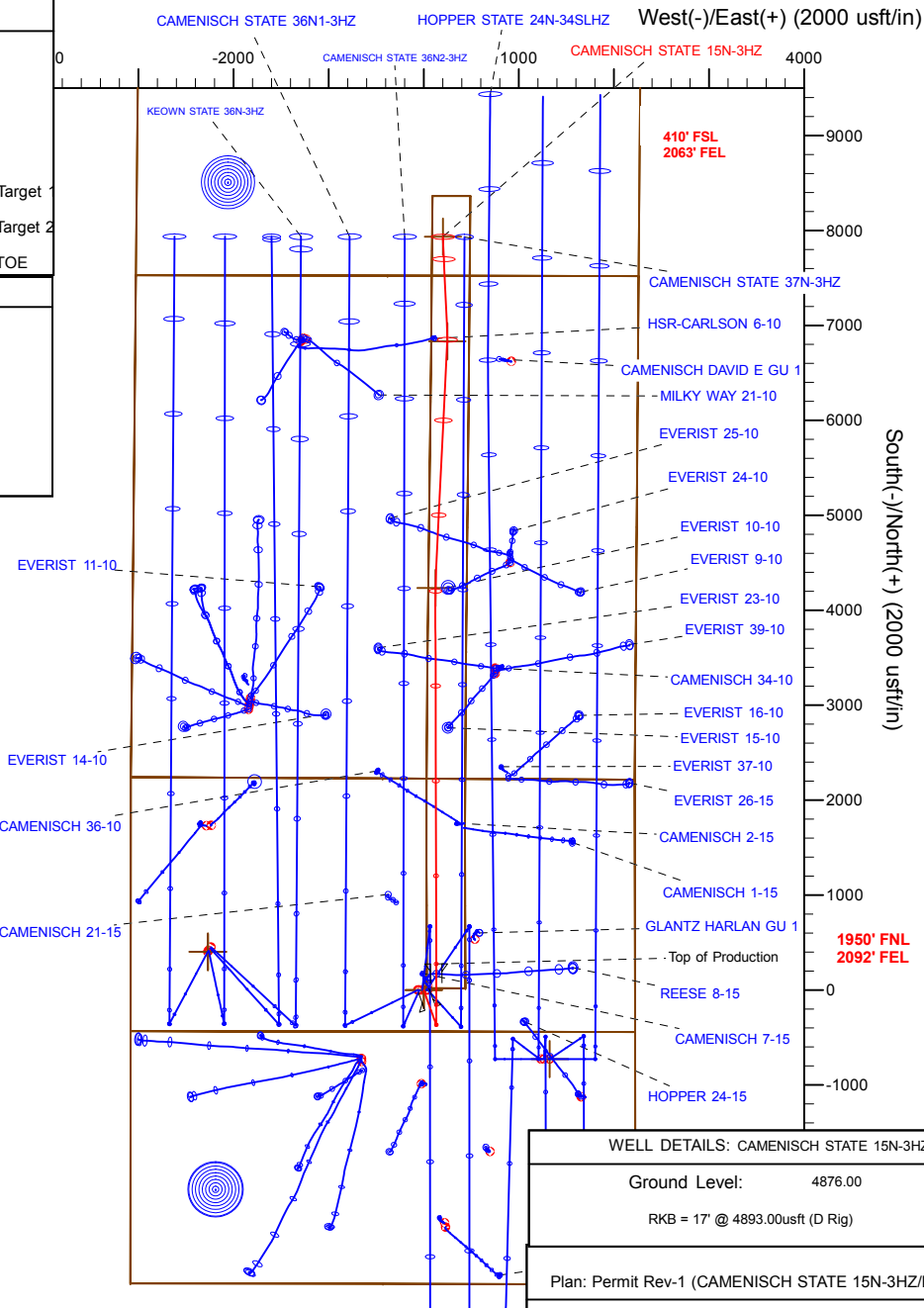
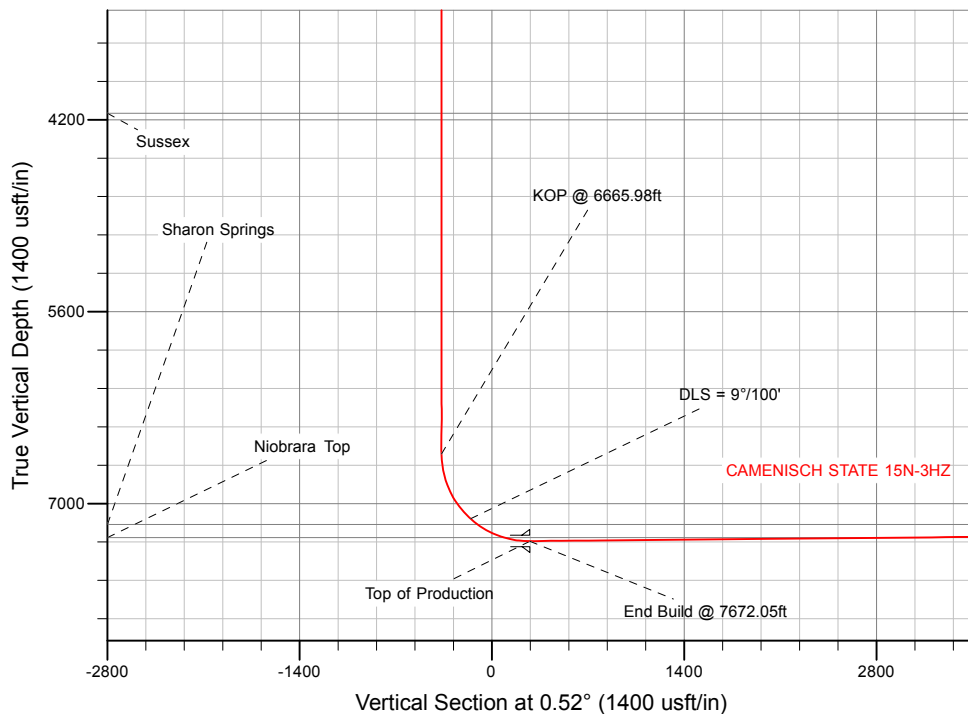
US ROCKIES WATTENBERG PLANNING

SECTION DETAILS

Sec	MD	Inc	Azi	TVD	+N/-S	+E/-W	Dleg	TFace	VSect	Target
1	0.00	0.00	0.00	0.00	0.00	0.00	0.00	0.00	0.00	
2	200.00	0.00	0.00	200.00	0.00	0.00	0.00	0.00	0.00	
3	800.00	9.00	160.00	797.54	-44.19	16.08	1.50	160.00	-44.04	
4	2770.00	9.00	160.00	2743.28	-333.78	121.49	0.00	0.00	-332.67	
5	3220.00	0.00	0.00	3191.43	-366.92	133.55	2.00	-180.00	-365.70	
6	6665.98	0.00	0.00	6637.41	-366.92	133.55	0.00	0.00	-365.70	
7	7672.05	90.55	359.89	7274.00	275.76	132.32	9.00	359.89	276.95	
8	11632.03	90.55	359.89	7236.26	4235.56	124.73	0.00	0.00	4236.52	CAMENISCH STATE 37N-3HZ_Target
9	11778.64	90.55	2.82	7234.86	4382.11	128.20	2.00	90.00	4383.09	
10	14232.11	90.55	2.82	7211.50	6832.49	249.01	0.00	0.00	6834.47	CAMENISCH STATE 37N-3HZ_Target 2
11	14292.19	90.55	357.42	7210.92	6892.54	249.13	9.00	-89.92	6894.52	
12	15335.22	90.55	357.42	7200.90	7934.46	202.10	0.00	0.00	7935.97	CAMENISCH STATE 15N-3HZ_TOE

WELLBORE TARGET DETAILS (LAT/LONG)

Name	TVD	+N/-S	+E/-W	Latitude	Longitude	Shape
CAMENISCH STATE 15N-3HZ_SHL	0.00	0.00	0.00	40.139979	-104.987713	Point
CAMENISCH STATE 15N-3HZ_TOE	7200.90	7934.46	202.10	40.161768	-104.986990	Point



Anadarko

Planning Report

Database:	PLANNING	Local Co-ordinate Reference:	Well CAMENISCH STATE 15N-3HZ
Company:	US ROCKIES WATTENBERG PLANNING	TVD Reference:	RKB = 17' @ 4893.00usft (D Rig)
Project:	WELD-NAD83-UTMFT13N	MD Reference:	RKB = 17' @ 4893.00usft (D Rig)
Site:	2N-68W-15 Camenisch 7-15 Pad	North Reference:	True
Well:	CAMENISCH STATE 15N-3HZ	Survey Calculation Method:	Minimum Curvature
Wellbore:	Plan A		
Design:	Permit Rev-1		

Project	WELD-NAD83-UTMFT13N		
Map System:	Universal Transverse Mercator (US Survey Feet)	System Datum:	Mean Sea Level
Geo Datum:	North American Datum 1983		
Map Zone:	Zone 13N (108 W to 102 W)		

Site	2N-68W-15 Camenisch 7-15 Pad			
Site Position:		Northing:	14,577,706.69 usft	Latitude: 40.139980
From:	Lat/Long	Easting:	1,643,790.52 usft	Longitude: -104.987928
Position Uncertainty:	0.00 usft	Slot Radius:	13-3/16 "	Grid Convergence: 0.01 °

Well	CAMENISCH STATE 15N-3HZ			
Well Position	+N/-S	-0.36 usft	Northing:	14,577,706.34 usft
	+E/-W	60.09 usft	Easting:	1,643,850.61 usft
			Latitude:	40.139979
			Longitude:	-104.987713
Position Uncertainty		3.28 usft	Wellhead Elevation:	0.00 usft
			Ground Level:	4,876.00 usft

Wellbore	Plan A				
Magnetics	Model Name	Sample Date	Declination (°)	Dip Angle (°)	Field Strength (nT)
	IGRF2010	9/22/2015	8.39	66.66	52,521

Design	Permit Rev-1			
Audit Notes:				
Version:	Phase:	PROTOTYPE	Tie On Depth:	0.00
Vertical Section:	Depth From (TVD) (usft)	+N/-S (usft)	+E/-W (usft)	Direction (°)
	0.00	0.00	0.00	0.52

Plan Sections										
Measured Depth (usft)	Inclination (°)	Azimuth (°)	Vertical Depth (usft)	+N/-S (usft)	+E/-W (usft)	Dogleg Rate (°/100usft)	Build Rate (°/100usft)	Turn Rate (°/100usft)	TFO (°)	Target
0.00	0.00	0.00	0.00	0.00	0.00	0.00	0.00	0.00	0.00	
200.00	0.00	0.00	200.00	0.00	0.00	0.00	0.00	0.00	0.00	
800.00	9.00	160.00	797.54	-44.19	16.08	1.50	1.50	0.00	160.00	
2,770.00	9.00	160.00	2,743.28	-333.78	121.49	0.00	0.00	0.00	0.00	
3,220.00	0.00	0.00	3,191.43	-366.92	133.55	2.00	-2.00	-35.56	-180.00	
6,665.98	0.00	0.00	6,637.41	-366.92	133.55	0.00	0.00	0.00	0.00	
7,672.05	90.55	359.89	7,274.00	275.76	132.32	9.00	9.00	-0.01	359.89	
11,632.03	90.55	359.89	7,236.26	4,235.56	124.73	0.00	0.00	0.00	0.00	CAMENISCH STATE
11,778.64	90.55	2.82	7,234.86	4,382.11	128.20	2.00	0.00	2.00	90.00	
14,232.12	90.55	2.82	7,211.50	6,832.49	249.01	0.00	0.00	0.00	0.00	CAMENISCH STATE
14,292.19	90.55	357.42	7,210.92	6,892.54	249.13	9.00	0.01	-9.00	-89.92	
15,335.22	90.55	357.42	7,200.90	7,934.46	202.10	0.00	0.00	0.00	0.00	CAMENISCH STATE

Anadarko

Planning Report

Database:	PLANNING	Local Co-ordinate Reference:	Well CAMENISCH STATE 15N-3HZ
Company:	US ROCKIES WATTENBERG PLANNING	TVD Reference:	RKB = 17' @ 4893.00usft (D Rig)
Project:	WELD-NAD83-UTMFT13N	MD Reference:	RKB = 17' @ 4893.00usft (D Rig)
Site:	2N-68W-15 Camenisch 7-15 Pad	North Reference:	True
Well:	CAMENISCH STATE 15N-3HZ	Survey Calculation Method:	Minimum Curvature
Wellbore:	Plan A		
Design:	Permit Rev-1		

Planned Survey									
Measured Depth (usft)	Inclination (°)	Azimuth (°)	Vertical Depth (usft)	+N/-S (usft)	+E/-W (usft)	Vertical Section (usft)	Dogleg Rate (°/100usft)	Build Rate (°/100usft)	Turn Rate (°/100usft)
0.00	0.00	0.00	0.00	0.00	0.00	0.00	0.00	0.00	0.00
100.00	0.00	0.00	100.00	0.00	0.00	0.00	0.00	0.00	0.00
200.00	0.00	0.00	200.00	0.00	0.00	0.00	0.00	0.00	0.00
Begin Nudge @ 200.00ft									
300.00	1.50	160.00	299.99	-1.23	0.45	-1.23	1.50	1.50	0.00
400.00	3.00	160.00	399.91	-4.92	1.79	-4.90	1.50	1.50	0.00
500.00	4.50	160.00	499.69	-11.06	4.03	-11.03	1.50	1.50	0.00
600.00	6.00	160.00	599.27	-19.66	7.16	-19.60	1.50	1.50	0.00
700.00	7.50	160.00	698.57	-30.71	11.18	-30.60	1.50	1.50	0.00
800.00	9.00	160.00	797.54	-44.19	16.08	-44.04	1.50	1.50	0.00
End Nudge @ 800.00ft									
819.61	9.00	160.00	816.90	-47.07	17.13	-46.92	0.00	0.00	0.00
Fox Hills									
900.00	9.00	160.00	896.30	-58.89	21.43	-58.69	0.00	0.00	0.00
1,000.00	9.00	160.00	995.07	-73.59	26.78	-73.34	0.00	0.00	0.00
1,100.00	9.00	160.00	1,093.84	-88.29	32.14	-88.00	0.00	0.00	0.00
1,200.00	9.00	160.00	1,192.61	-102.99	37.49	-102.65	0.00	0.00	0.00
1,300.00	9.00	160.00	1,291.38	-117.69	42.84	-117.30	0.00	0.00	0.00
1,400.00	9.00	160.00	1,390.15	-132.39	48.19	-131.95	0.00	0.00	0.00
1,500.00	9.00	160.00	1,488.92	-147.09	53.54	-146.60	0.00	0.00	0.00
1,600.00	9.00	160.00	1,587.69	-161.79	58.89	-161.25	0.00	0.00	0.00
1,700.00	9.00	160.00	1,686.46	-176.49	64.24	-175.90	0.00	0.00	0.00
1,800.00	9.00	160.00	1,785.22	-191.19	69.59	-190.55	0.00	0.00	0.00
1,814.96	9.00	160.00	1,800.00	-193.39	70.39	-192.74	0.00	0.00	0.00
9 5/8"									
1,900.00	9.00	160.00	1,883.99	-205.89	74.94	-205.20	0.00	0.00	0.00
2,000.00	9.00	160.00	1,982.76	-220.59	80.29	-219.85	0.00	0.00	0.00
2,100.00	9.00	160.00	2,081.53	-235.29	85.64	-234.50	0.00	0.00	0.00
2,200.00	9.00	160.00	2,180.30	-249.99	90.99	-249.16	0.00	0.00	0.00
2,300.00	9.00	160.00	2,279.07	-264.69	96.34	-263.81	0.00	0.00	0.00
2,400.00	9.00	160.00	2,377.84	-279.39	101.69	-278.46	0.00	0.00	0.00
2,500.00	9.00	160.00	2,476.61	-294.09	107.04	-293.11	0.00	0.00	0.00
2,600.00	9.00	160.00	2,575.37	-308.79	112.39	-307.76	0.00	0.00	0.00
2,700.00	9.00	160.00	2,674.14	-323.49	117.74	-322.41	0.00	0.00	0.00
2,770.00	9.00	160.00	2,743.28	-333.78	121.49	-332.67	0.00	0.00	0.00
Begin Drop @ 2770.00ft									
2,800.00	8.40	160.00	2,772.94	-338.05	123.04	-336.92	2.00	-2.00	0.00
2,900.00	6.40	160.00	2,872.10	-350.15	127.44	-348.98	2.00	-2.00	0.00
3,000.00	4.40	160.00	2,971.65	-358.99	130.66	-357.79	2.00	-2.00	0.00
3,100.00	2.40	160.00	3,071.47	-364.56	132.69	-363.34	2.00	-2.00	0.00
3,200.00	0.40	160.00	3,171.43	-366.86	133.53	-365.63	2.00	-2.00	0.00
3,220.00	0.00	0.00	3,191.43	-366.92	133.55	-365.70	2.00	-2.00	0.00
End Drop @ 3220.00ft									
3,300.00	0.00	0.00	3,271.43	-366.92	133.55	-365.70	0.00	0.00	0.00
3,400.00	0.00	0.00	3,371.43	-366.92	133.55	-365.70	0.00	0.00	0.00
3,500.00	0.00	0.00	3,471.43	-366.92	133.55	-365.70	0.00	0.00	0.00
3,600.00	0.00	0.00	3,571.43	-366.92	133.55	-365.70	0.00	0.00	0.00
3,700.00	0.00	0.00	3,671.43	-366.92	133.55	-365.70	0.00	0.00	0.00
3,800.00	0.00	0.00	3,771.43	-366.92	133.55	-365.70	0.00	0.00	0.00
3,900.00	0.00	0.00	3,871.43	-366.92	133.55	-365.70	0.00	0.00	0.00
4,000.00	0.00	0.00	3,971.43	-366.92	133.55	-365.70	0.00	0.00	0.00
4,100.00	0.00	0.00	4,071.43	-366.92	133.55	-365.70	0.00	0.00	0.00
4,181.57	0.00	0.00	4,153.00	-366.92	133.55	-365.70	0.00	0.00	0.00

Anadarko
Planning Report

Database:	PLANNING	Local Co-ordinate Reference:	Well CAMENISCH STATE 15N-3HZ
Company:	US ROCKIES WATTENBERG PLANNING	TVD Reference:	RKB = 17' @ 4893.00usft (D Rig)
Project:	WELD-NAD83-UTMFT13N	MD Reference:	RKB = 17' @ 4893.00usft (D Rig)
Site:	2N-68W-15 Camenisch 7-15 Pad	North Reference:	True
Well:	CAMENISCH STATE 15N-3HZ	Survey Calculation Method:	Minimum Curvature
Wellbore:	Plan A		
Design:	Permit Rev-1		

Planned Survey									
Measured Depth (usft)	Inclination (°)	Azimuth (°)	Vertical Depth (usft)	+N/-S (usft)	+E/-W (usft)	Vertical Section (usft)	Dogleg Rate (°/100usft)	Build Rate (°/100usft)	Turn Rate (°/100usft)
Sussex									
4,200.00	0.00	0.00	4,171.43	-366.92	133.55	-365.70	0.00	0.00	0.00
4,300.00	0.00	0.00	4,271.43	-366.92	133.55	-365.70	0.00	0.00	0.00
4,400.00	0.00	0.00	4,371.43	-366.92	133.55	-365.70	0.00	0.00	0.00
4,500.00	0.00	0.00	4,471.43	-366.92	133.55	-365.70	0.00	0.00	0.00
4,600.00	0.00	0.00	4,571.43	-366.92	133.55	-365.70	0.00	0.00	0.00
4,700.00	0.00	0.00	4,671.43	-366.92	133.55	-365.70	0.00	0.00	0.00
4,800.00	0.00	0.00	4,771.43	-366.92	133.55	-365.70	0.00	0.00	0.00
4,900.00	0.00	0.00	4,871.43	-366.92	133.55	-365.70	0.00	0.00	0.00
5,000.00	0.00	0.00	4,971.43	-366.92	133.55	-365.70	0.00	0.00	0.00
5,100.00	0.00	0.00	5,071.43	-366.92	133.55	-365.70	0.00	0.00	0.00
5,200.00	0.00	0.00	5,171.43	-366.92	133.55	-365.70	0.00	0.00	0.00
5,300.00	0.00	0.00	5,271.43	-366.92	133.55	-365.70	0.00	0.00	0.00
5,400.00	0.00	0.00	5,371.43	-366.92	133.55	-365.70	0.00	0.00	0.00
5,500.00	0.00	0.00	5,471.43	-366.92	133.55	-365.70	0.00	0.00	0.00
5,600.00	0.00	0.00	5,571.43	-366.92	133.55	-365.70	0.00	0.00	0.00
5,700.00	0.00	0.00	5,671.43	-366.92	133.55	-365.70	0.00	0.00	0.00
5,800.00	0.00	0.00	5,771.43	-366.92	133.55	-365.70	0.00	0.00	0.00
5,900.00	0.00	0.00	5,871.43	-366.92	133.55	-365.70	0.00	0.00	0.00
6,000.00	0.00	0.00	5,971.43	-366.92	133.55	-365.70	0.00	0.00	0.00
6,100.00	0.00	0.00	6,071.43	-366.92	133.55	-365.70	0.00	0.00	0.00
6,200.00	0.00	0.00	6,171.43	-366.92	133.55	-365.70	0.00	0.00	0.00
6,300.00	0.00	0.00	6,271.43	-366.92	133.55	-365.70	0.00	0.00	0.00
6,400.00	0.00	0.00	6,371.43	-366.92	133.55	-365.70	0.00	0.00	0.00
6,500.00	0.00	0.00	6,471.43	-366.92	133.55	-365.70	0.00	0.00	0.00
6,600.00	0.00	0.00	6,571.43	-366.92	133.55	-365.70	0.00	0.00	0.00
6,665.98	0.00	0.00	6,637.41	-366.92	133.55	-365.70	0.00	0.00	0.00
KOP @ 6665.98ft									
6,700.00	3.06	359.89	6,671.42	-366.02	133.55	-364.79	9.00	9.00	-0.32
6,800.00	12.06	359.89	6,770.45	-352.87	133.52	-351.64	9.00	9.00	0.00
6,900.00	21.06	359.89	6,866.20	-324.39	133.47	-323.17	9.00	9.00	0.00
7,000.00	30.06	359.89	6,956.32	-281.29	133.39	-280.07	9.00	9.00	0.00
7,100.00	39.06	359.89	7,038.58	-224.62	133.28	-223.40	9.00	9.00	0.00
7,200.00	48.06	359.89	7,110.97	-155.78	133.15	-154.56	9.00	9.00	0.00
DLS = 9°/100'									
7,266.58	54.05	359.89	7,152.80	-104.02	133.05	-102.81	9.00	9.00	0.00
Sharon Springs									
7,300.00	57.06	359.89	7,171.70	-76.46	132.99	-75.25	9.00	9.00	0.00
7,400.00	66.06	359.89	7,219.27	11.39	132.82	12.59	9.00	9.00	0.00
7,482.59	73.49	359.89	7,247.80	88.83	132.68	90.03	9.00	9.00	0.00
Niobrara Top									
7,500.00	75.06	359.89	7,252.52	105.59	132.64	106.79	9.00	9.00	0.00
7,600.00	84.06	359.89	7,270.62	203.83	132.46	205.03	9.00	9.00	0.00
7,672.05	90.55	359.89	7,274.00	275.76	132.32	276.95	9.00	9.00	0.00
End Build @ 7672.05ft - Top of Production									
7,700.00	90.55	359.89	7,273.74	303.71	132.26	304.90	0.00	0.00	0.00
7,800.00	90.55	359.89	7,272.78	403.71	132.07	404.89	0.00	0.00	0.00
7,900.00	90.55	359.89	7,271.83	503.70	131.88	504.88	0.00	0.00	0.00
8,000.00	90.55	359.89	7,270.88	603.70	131.69	604.87	0.00	0.00	0.00
8,100.00	90.55	359.89	7,269.93	703.69	131.50	704.86	0.00	0.00	0.00
8,200.00	90.55	359.89	7,268.97	803.69	131.31	804.85	0.00	0.00	0.00
8,300.00	90.55	359.89	7,268.02	903.68	131.11	904.84	0.00	0.00	0.00
8,400.00	90.55	359.89	7,267.07	1,003.68	130.92	1,004.83	0.00	0.00	0.00

Anadarko

Planning Report

Database:	PLANNING	Local Co-ordinate Reference:	Well CAMENISCH STATE 15N-3HZ
Company:	US ROCKIES WATTENBERG PLANNING	TVD Reference:	RKB = 17' @ 4893.00usft (D Rig)
Project:	WELD-NAD83-UTMFT13N	MD Reference:	RKB = 17' @ 4893.00usft (D Rig)
Site:	2N-68W-15 Camenisch 7-15 Pad	North Reference:	True
Well:	CAMENISCH STATE 15N-3HZ	Survey Calculation Method:	Minimum Curvature
Wellbore:	Plan A		
Design:	Permit Rev-1		

Planned Survey									
Measured Depth (usft)	Inclination (°)	Azimuth (°)	Vertical Depth (usft)	+N/-S (usft)	+E/-W (usft)	Vertical Section (usft)	Dogleg Rate (°/100usft)	Build Rate (°/100usft)	Turn Rate (°/100usft)
8,500.00	90.55	359.89	7,266.11	1,103.67	130.73	1,104.82	0.00	0.00	0.00
8,600.00	90.55	359.89	7,265.16	1,203.67	130.54	1,204.80	0.00	0.00	0.00
8,700.00	90.55	359.89	7,264.21	1,303.67	130.35	1,304.79	0.00	0.00	0.00
8,800.00	90.55	359.89	7,263.25	1,403.66	130.16	1,404.78	0.00	0.00	0.00
8,900.00	90.55	359.89	7,262.30	1,503.66	129.97	1,504.77	0.00	0.00	0.00
9,000.00	90.55	359.89	7,261.35	1,603.65	129.77	1,604.76	0.00	0.00	0.00
9,100.00	90.55	359.89	7,260.39	1,703.65	129.58	1,704.75	0.00	0.00	0.00
9,200.00	90.55	359.89	7,259.44	1,803.64	129.39	1,804.74	0.00	0.00	0.00
9,300.00	90.55	359.89	7,258.49	1,903.64	129.20	1,904.73	0.00	0.00	0.00
9,400.00	90.55	359.89	7,257.53	2,003.63	129.01	2,004.72	0.00	0.00	0.00
9,500.00	90.55	359.89	7,256.58	2,103.63	128.82	2,104.71	0.00	0.00	0.00
9,600.00	90.55	359.89	7,255.63	2,203.62	128.62	2,204.70	0.00	0.00	0.00
9,700.00	90.55	359.89	7,254.68	2,303.62	128.43	2,304.69	0.00	0.00	0.00
9,800.00	90.55	359.89	7,253.72	2,403.61	128.24	2,404.68	0.00	0.00	0.00
9,900.00	90.55	359.89	7,252.77	2,503.61	128.05	2,504.67	0.00	0.00	0.00
10,000.00	90.55	359.89	7,251.82	2,603.60	127.86	2,604.66	0.00	0.00	0.00
10,100.00	90.55	359.89	7,250.86	2,703.60	127.67	2,704.65	0.00	0.00	0.00
10,200.00	90.55	359.89	7,249.91	2,803.59	127.47	2,804.64	0.00	0.00	0.00
10,300.00	90.55	359.89	7,248.96	2,903.59	127.28	2,904.63	0.00	0.00	0.00
10,400.00	90.55	359.89	7,248.00	3,003.58	127.09	3,004.61	0.00	0.00	0.00
10,500.00	90.55	359.89	7,247.05	3,103.58	126.90	3,104.60	0.00	0.00	0.00
10,600.00	90.55	359.89	7,246.10	3,203.58	126.71	3,204.59	0.00	0.00	0.00
10,700.00	90.55	359.89	7,245.14	3,303.57	126.52	3,304.58	0.00	0.00	0.00
10,800.00	90.55	359.89	7,244.19	3,403.57	126.32	3,404.57	0.00	0.00	0.00
10,900.00	90.55	359.89	7,243.24	3,503.56	126.13	3,504.56	0.00	0.00	0.00
11,000.00	90.55	359.89	7,242.28	3,603.56	125.94	3,604.55	0.00	0.00	0.00
11,100.00	90.55	359.89	7,241.33	3,703.55	125.75	3,704.54	0.00	0.00	0.00
11,200.00	90.55	359.89	7,240.38	3,803.55	125.56	3,804.53	0.00	0.00	0.00
11,300.00	90.55	359.89	7,239.42	3,903.54	125.37	3,904.52	0.00	0.00	0.00
11,400.00	90.55	359.89	7,238.47	4,003.54	125.17	4,004.51	0.00	0.00	0.00
11,500.00	90.55	359.89	7,237.52	4,103.53	124.98	4,104.50	0.00	0.00	0.00
11,600.00	90.55	359.89	7,236.57	4,203.53	124.79	4,204.49	0.00	0.00	0.00
11,632.03	90.55	359.89	7,236.26	4,235.56	124.73	4,236.51	0.00	0.00	0.00
Begin Turn @ 11632.03ft									
11,700.00	90.55	1.25	7,235.61	4,303.52	125.41	4,304.48	2.00	0.00	2.00
11,778.64	90.55	2.82	7,234.86	4,382.10	128.20	4,383.09	2.00	0.00	2.00
End Turn @ 11778.64ft									
11,800.00	90.55	2.82	7,234.66	4,403.44	129.25	4,404.43	0.00	0.00	0.00
11,900.00	90.55	2.82	7,233.71	4,503.31	134.18	4,504.34	0.00	0.00	0.00
12,000.00	90.55	2.82	7,232.76	4,603.18	139.10	4,604.26	0.00	0.00	0.00
12,100.00	90.55	2.82	7,231.80	4,703.06	144.02	4,704.17	0.00	0.00	0.00
12,200.00	90.55	2.82	7,230.85	4,802.93	148.95	4,804.09	0.00	0.00	0.00
12,300.00	90.55	2.82	7,229.90	4,902.81	153.87	4,904.00	0.00	0.00	0.00
12,400.00	90.55	2.82	7,228.95	5,002.68	158.80	5,003.92	0.00	0.00	0.00
12,500.00	90.55	2.82	7,227.99	5,102.56	163.72	5,103.83	0.00	0.00	0.00
12,600.00	90.55	2.82	7,227.04	5,202.43	168.64	5,203.75	0.00	0.00	0.00
12,700.00	90.55	2.82	7,226.09	5,302.30	173.57	5,303.66	0.00	0.00	0.00
12,800.00	90.55	2.82	7,225.14	5,402.18	178.49	5,403.58	0.00	0.00	0.00
12,900.00	90.55	2.82	7,224.19	5,502.05	183.42	5,503.49	0.00	0.00	0.00
13,000.00	90.55	2.82	7,223.23	5,601.93	188.34	5,603.40	0.00	0.00	0.00
13,100.00	90.55	2.82	7,222.28	5,701.80	193.26	5,703.32	0.00	0.00	0.00
13,200.00	90.55	2.82	7,221.33	5,801.67	198.19	5,803.23	0.00	0.00	0.00
13,300.00	90.55	2.82	7,220.38	5,901.55	203.11	5,903.15	0.00	0.00	0.00

Anadarko

Planning Report

Database:	PLANNING	Local Co-ordinate Reference:	Well CAMENISCH STATE 15N-3HZ
Company:	US ROCKIES WATTENBERG PLANNING	TVD Reference:	RKB = 17' @ 4893.00usft (D Rig)
Project:	WELD-NAD83-UTMFT13N	MD Reference:	RKB = 17' @ 4893.00usft (D Rig)
Site:	2N-68W-15 Camenisch 7-15 Pad	North Reference:	True
Well:	CAMENISCH STATE 15N-3HZ	Survey Calculation Method:	Minimum Curvature
Wellbore:	Plan A		
Design:	Permit Rev-1		

Planned Survey									
Measured Depth (usft)	Inclination (°)	Azimuth (°)	Vertical Depth (usft)	+N/-S (usft)	+E/-W (usft)	Vertical Section (usft)	Dogleg Rate (°/100usft)	Build Rate (°/100usft)	Turn Rate (°/100usft)
13,400.00	90.55	2.82	7,219.42	6,001.42	208.04	6,003.06	0.00	0.00	0.00
13,500.00	90.55	2.82	7,218.47	6,101.30	212.96	6,102.98	0.00	0.00	0.00
13,600.00	90.55	2.82	7,217.52	6,201.17	217.88	6,202.89	0.00	0.00	0.00
13,700.00	90.55	2.82	7,216.57	6,301.05	222.81	6,302.81	0.00	0.00	0.00
13,800.00	90.55	2.82	7,215.61	6,400.92	227.73	6,402.72	0.00	0.00	0.00
13,900.00	90.55	2.82	7,214.66	6,500.79	232.66	6,502.64	0.00	0.00	0.00
14,000.00	90.55	2.82	7,213.71	6,600.67	237.58	6,602.55	0.00	0.00	0.00
14,100.00	90.55	2.82	7,212.76	6,700.54	242.50	6,702.47	0.00	0.00	0.00
14,200.00	90.55	2.82	7,211.81	6,800.42	247.43	6,802.38	0.00	0.00	0.00
14,232.11	90.55	2.82	7,211.50	6,832.49	249.01	6,834.46	0.00	0.00	0.00
Begin Turn to BHL @ 14232.11ft									
14,292.19	90.55	357.42	7,210.93	6,892.54	249.13	6,894.52	9.00	0.01	-9.00
End Turn @ 14292.19ft									
14,300.00	90.55	357.42	7,210.85	6,900.34	248.78	6,902.32	0.00	0.00	0.00
14,400.00	90.55	357.42	7,209.89	7,000.24	244.27	7,002.16	0.00	0.00	0.00
14,500.00	90.55	357.42	7,208.93	7,100.13	239.76	7,102.01	0.00	0.00	0.00
14,600.00	90.55	357.42	7,207.97	7,200.02	235.25	7,201.86	0.00	0.00	0.00
14,700.00	90.55	357.42	7,207.01	7,299.92	230.74	7,301.71	0.00	0.00	0.00
14,800.00	90.55	357.42	7,206.04	7,399.81	226.24	7,401.56	0.00	0.00	0.00
14,900.00	90.55	357.42	7,205.08	7,499.70	221.73	7,501.41	0.00	0.00	0.00
15,000.00	90.55	357.42	7,204.12	7,599.60	217.22	7,601.26	0.00	0.00	0.00
15,100.00	90.55	357.42	7,203.16	7,699.49	212.71	7,701.10	0.00	0.00	0.00
15,200.00	90.55	357.42	7,202.20	7,799.38	208.20	7,800.95	0.00	0.00	0.00
15,300.00	90.55	357.42	7,201.24	7,899.28	203.69	7,900.80	0.00	0.00	0.00
15,335.22	90.55	357.42	7,200.90	7,934.46	202.10	7,935.97	0.00	0.00	0.00
TD Well @ 15335.22ft									

Anadarko

Planning Report

Database:	PLANNING	Local Co-ordinate Reference:	Well CAMENISCH STATE 15N-3HZ
Company:	US ROCKIES WATTENBERG PLANNING	TVD Reference:	RKB = 17' @ 4893.00usft (D Rig)
Project:	WELD-NAD83-UTMFT13N	MD Reference:	RKB = 17' @ 4893.00usft (D Rig)
Site:	2N-68W-15 Camenisch 7-15 Pad	North Reference:	True
Well:	CAMENISCH STATE 15N-3HZ	Survey Calculation Method:	Minimum Curvature
Wellbore:	Plan A		
Design:	Permit Rev-1		

Design Targets									
Target Name									
- hit/miss target	Dip Angle	Dip Dir.	TVD	+N/-S	+E/-W	Northing	Easting	Latitude	Longitude
- Shape	(°)	(°)	(usft)	(usft)	(usft)	(usft)	(usft)		
CAMENISCH STATE 15	0.00	0.00	0.00	0.00	0.00	14,577,706.34	1,643,850.61	40.139979	-104.987713
- plan hits target center									
- Polygon									
Point 1			0.00	8,365.36	491.68	14,586,071.76	1,644,341.14		
Point 2			0.00	7,521.40	484.28	14,585,227.80	1,644,333.85		
Point 3			0.00	6,200.63	471.78	14,583,907.03	1,644,321.54		
Point 4			0.00	4,876.43	459.24	14,582,582.83	1,644,309.18		
Point 5			0.00	3,564.32	446.82	14,581,270.72	1,644,296.94		
Point 6			0.00	2,225.81	434.14	14,579,932.21	1,644,284.45		
Point 7			0.00	892.55	436.89	14,578,598.95	1,644,287.38		
Point 8			0.00	19.28	438.69	14,577,725.68	1,644,289.30		
Point 9			0.00	20.01	33.08	14,577,726.35	1,643,883.69		
Point 10			0.00	896.06	31.74	14,578,602.40	1,643,882.23		
Point 11			0.00	2,227.72	29.70	14,579,934.06	1,643,880.00		
Point 12			0.00	3,556.30	42.86	14,581,262.64	1,643,892.98		
Point 13			0.00	4,887.08	56.02	14,582,593.42	1,643,905.96		
Point 14			0.00	6,202.51	70.21	14,583,908.86	1,643,919.97		
Point 15			0.00	7,522.20	84.45	14,585,228.55	1,643,934.02		
Point 16			0.00	8,365.02	93.49	14,586,071.37	1,643,942.95		
Point 17			0.00	8,365.36	491.68	14,586,071.76	1,644,341.14		
CAMENISCH STATE 15	0.00	0.00	0.00	0.00	0.00	14,577,706.34	1,643,850.61	40.139979	-104.987713
- plan hits target center									
- Point									
2N-R68W-Sec. 15_Secti	0.00	0.00	4.00	403.95	-2,269.05	14,578,109.97	1,641,581.51	40.141088	-104.995832
- plan misses target center by 2304.72usft at 4.00usft MD (4.00 TVD, 0.00 N, 0.00 E)									
- Polygon									
Point 1			4.00	1,838.97	-809.58	14,579,948.83	1,640,771.68		
Point 2			4.00	1,825.91	1,838.52	14,579,936.13	1,643,419.78		
Point 3			4.00	1,813.87	4,487.46	14,579,924.46	1,646,068.72		
Point 4			4.00	-845.15	4,491.86	14,577,265.44	1,646,073.49		
Point 5			4.00	-3,504.52	4,495.41	14,574,606.07	1,646,077.40		
Point 6			4.00	-3,497.58	1,841.43	14,574,612.64	1,643,423.42		
Point 7			4.00	-3,492.17	-813.11	14,574,617.68	1,640,768.88		
Point 8			4.00	-835.71	-811.34	14,577,274.15	1,640,770.29		
2N-R68W-Sec. 3_Sectio	0.00	0.00	4.00	403.95	-2,269.05	14,578,109.97	1,641,581.51	40.141088	-104.995832
- plan misses target center by 2304.72usft at 4.00usft MD (4.00 TVD, 0.00 N, 0.00 E)									
- Polygon									
Point 1			4.00	12,346.53	-703.08	14,590,456.40	1,640,876.72		
Point 2			4.00	12,327.66	1,945.29	14,590,437.90	1,643,525.10		
Point 3			4.00	12,348.39	4,570.76	14,590,458.99	1,646,150.56		
Point 4			4.00	9,783.31	4,550.84	14,587,893.91	1,646,131.00		
Point 5			4.00	7,116.64	4,529.53	14,585,227.23	1,646,110.06		
Point 6			4.00	7,121.75	1,889.82	14,585,231.98	1,643,470.35		
Point 7			4.00	7,126.42	-756.60	14,585,236.28	1,640,823.92		
2N-R68W-Sec. 10_Secti	0.00	0.00	4.00	403.95	-2,269.05	14,578,109.97	1,641,581.51	40.141088	-104.995832
- plan misses target center by 2304.72usft at 4.00usft MD (4.00 TVD, 0.00 N, 0.00 E)									
- Polygon									
Point 1			4.00	7,126.42	-756.60	14,585,236.28	1,640,823.92		
Point 2			4.00	7,121.75	1,889.82	14,585,231.98	1,643,470.35		
Point 3			4.00	7,116.64	4,529.53	14,585,227.23	1,646,110.06		
Point 4			4.00	4,479.82	4,509.34	14,582,590.41	1,646,090.23		
Point 5			4.00	1,813.87	4,487.46	14,579,924.46	1,646,068.72		
Point 6			4.00	1,825.91	1,838.52	14,579,936.13	1,643,419.78		
Point 7			4.00	1,838.97	-809.58	14,579,948.83	1,640,771.68		
Point 8			4.00	4,495.81	-782.94	14,582,605.67	1,640,797.95		

Anadarko

Planning Report

Database:	PLANNING	Local Co-ordinate Reference:	Well CAMENISCH STATE 15N-3HZ
Company:	US ROCKIES WATTENBERG PLANNING	TVD Reference:	RKB = 17' @ 4893.00usft (D Rig)
Project:	WELD-NAD83-UTMFT13N	MD Reference:	RKB = 17' @ 4893.00usft (D Rig)
Site:	2N-68W-15 Camenisch 7-15 Pad	North Reference:	True
Well:	CAMENISCH STATE 15N-3HZ	Survey Calculation Method:	Minimum Curvature
Wellbore:	Plan A		
Design:	Permit Rev-1		

2N-R68W-Sec. 15_Half	0.00	0.00	-17.00	-726.44	1,325.32	14,576,980.08	1,645,176.04	40.137984	-104.982971
- plan misses target center by 1511.45usft at 0.00usft MD (0.00 TVD, 0.00 N, 0.00 E)									
- Polygon									
Point 1			-17.00	294.98	-4,405.77	14,577,274.45	1,640,770.23		
Point 2			-17.00	284.78	897.42	14,577,264.98	1,646,073.42		
CAMENISCH STATE 15	0.00	0.00	7,200.90	7,934.46	202.10	14,585,640.82	1,644,051.62	40.161768	-104.986990
- plan hits target center									
- Point									
CAMENISCH STATE 37	0.00	0.00	7,211.50	6,832.49	249.01	14,584,538.86	1,644,098.68	40.158742	-104.986822
- plan hits target center									
- Point									
CAMENISCH STATE 37	0.00	0.00	7,236.26	4,235.56	124.73	14,581,941.91	1,643,974.76	40.151610	-104.987267
- plan hits target center									
- Point									

Casing Points					
Measured Depth (usft)	Vertical Depth (usft)	Name		Casing Diameter (")	Hole Diameter (")
1,814.96	1,800.00	9 5/8"		9-5/8	13-1/2
7,672.05	7,274.00	Top of Production		5-1/2	7-7/8

Formations					
Measured Depth (usft)	Vertical Depth (usft)	Name	Lithology	Dip (°)	Dip Direction (°)
819.61	816.90	Fox Hills			
4,181.57	4,153.00	Sussex			
7,266.58	7,152.80	Sharon Springs			
7,482.59	7,247.80	Niobrara Top			

Plan Annotations					
Measured Depth (usft)	Vertical Depth (usft)	Local Coordinates			
		+N/-S (usft)	+E/-W (usft)	Comment	
200.00	200.00	0.00	0.00	Begin Nudge @ 200.00ft	
800.00	797.54	-44.19	16.08	End Nudge @ 800.00ft	
2,770.00	2,743.28	-333.78	121.49	Begin Drop @ 2770.00ft	
3,220.00	3,191.43	-366.92	133.55	End Drop @ 3220.00ft	
6,665.98	6,637.41	-366.92	133.55	KOP @ 6665.98ft	
7,200.00	7,110.97	-155.78	133.15	DLS = 9°/100'	
7,672.05	7,274.00	275.76	132.32	End Build @ 7672.05ft	
11,632.03	7,236.26	4,235.56	124.73	Begin Turn @ 11632.03ft	
11,778.64	7,234.86	4,382.10	128.20	End Turn @ 11778.64ft	
14,232.11	7,211.50	6,832.49	249.01	Begin Turn to BHL @ 14232.11ft	
14,292.19	7,210.93	6,892.54	249.13	End Turn @ 14292.19ft	
15,335.22	7,200.90	7,934.46	202.10	TD Well @ 15335.22ft	