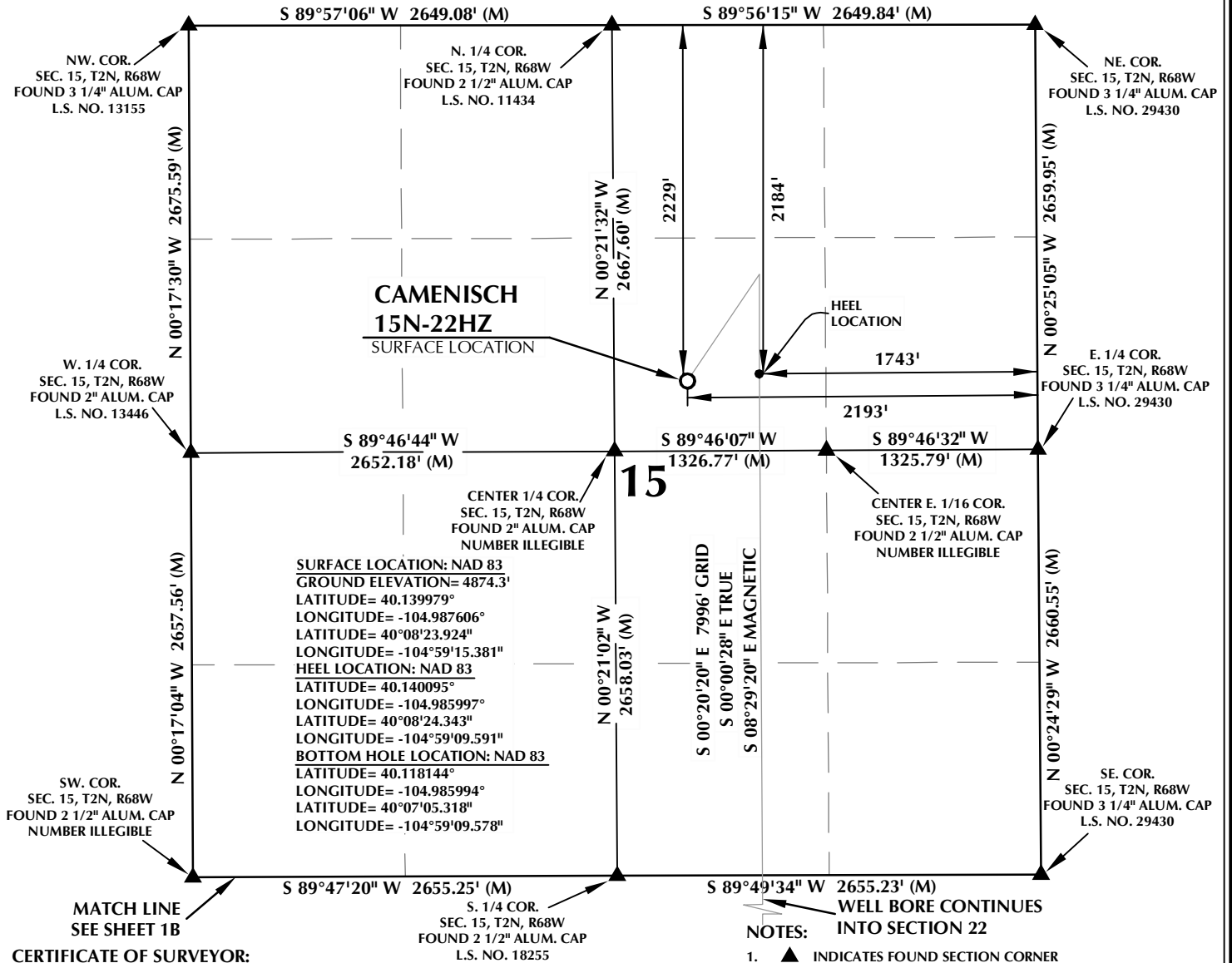


# T2N, R68W

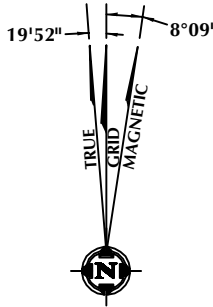


### CERTIFICATE OF SURVEYOR:

THIS IS TO CERTIFY THAT THE ABOVE PLAT WAS PREPARED FROM FIELD NOTES OF ACTUAL SURVEY MADE BY ME OR UNDER MY SUPERVISION AND THAT THE SAME ARE TRUE AND CORRECT TO THE BEST OF MY KNOWLEDGE AND BELIEF. THIS CERTIFICATE DOES NOT REPRESENT A LAND SURVEY PLAT OR IMPROVEMENT SURVEY PLAT AS DEFINED BY C.R.S. 38-51-102 AND CANNOT BE RELIED UPON TO DETERMINE OWNERSHIP.

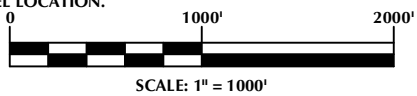
*Richard E. Mariotti*  
 RICHARD E. MARIOTTI  
 PROFESSIONAL LAND SURVEYOR  
 COLORADO REGISTRATION NUMBER 22573  
 9/28/15

NOTICE: ACCORDING TO COLORADO STATE LAW YOU MUST COMMENCE ANY LEGAL ACTION BASED UPON ANY DEFECT IN THIS SURVEY WITHIN THREE YEARS AFTER YOU FIRST DISCOVER SUCH DEFECT. IN NO EVENT MAY ANY ACTION BASED UPON ANY DEFECT IN THIS SURVEY BE COMMENCED MORE THAN TEN YEARS FROM THE DATE ON THE CERTIFICATION SHOWN HEREON.



NOTE: MAGNETIC NORTH IS CURRENT AS OF 9/10/2015. MAGNETIC NORTH CHANGES WEST 0°06' PER YEAR.

- NOTES:
- ▲ INDICATES FOUND SECTION CORNER
  - INDICATES CALCULATED CORNER
  - ELEVATION BASED ON NAVD88 (GEOID09)
  - BASIS OF BEARING DERIVED FROM COLORADO COORDINATE SYSTEM 1983 NORTH ZONE UNLESS OTHERWISE NOTED.
  - ALL MEASURED DISTANCES ARE GRID. COMBINED SCALE FACTOR: .99972911
  - OPERATOR: ROB WILSON / PDOP = 1.5
  - SEE ADDENDUM TO WELL LOCATION CERTIFICATE FOR EXISTING IMPROVEMENTS WITHIN 500' OF THE WELL PAD.
  - WELL FOOTAGES ARE MEASURED AT RIGHT ANGLES TO THE SECTION LINES.
  - THE BOTTOM OF HOLE BEARS S00°20'20"E, 7996' FROM THE HEEL LOCATION.



### WELL PAD - CAMENISCH 36N-22HZ

CAMENISCH 15N-22HZ  
 WELL LOCATION CERTIFICATE  
 2229' FNL & 2193' FEL SWNE (SURFACE)  
 2184' FNL & 1743' FEL SWNE (HEEL)  
 LOCATED IN SECTION 15  
 461' FSL & 1729' FEL SWSE (BOTTOM)  
 LOCATED IN SECTION 22  
 T2N, R68W, 6TH P.M.  
 WELD COUNTY, COLORADO

**Kerr-McGee Oil & Gas Onshore L.P.**  
 1099 18th Street  
 Denver, Colorado 80202

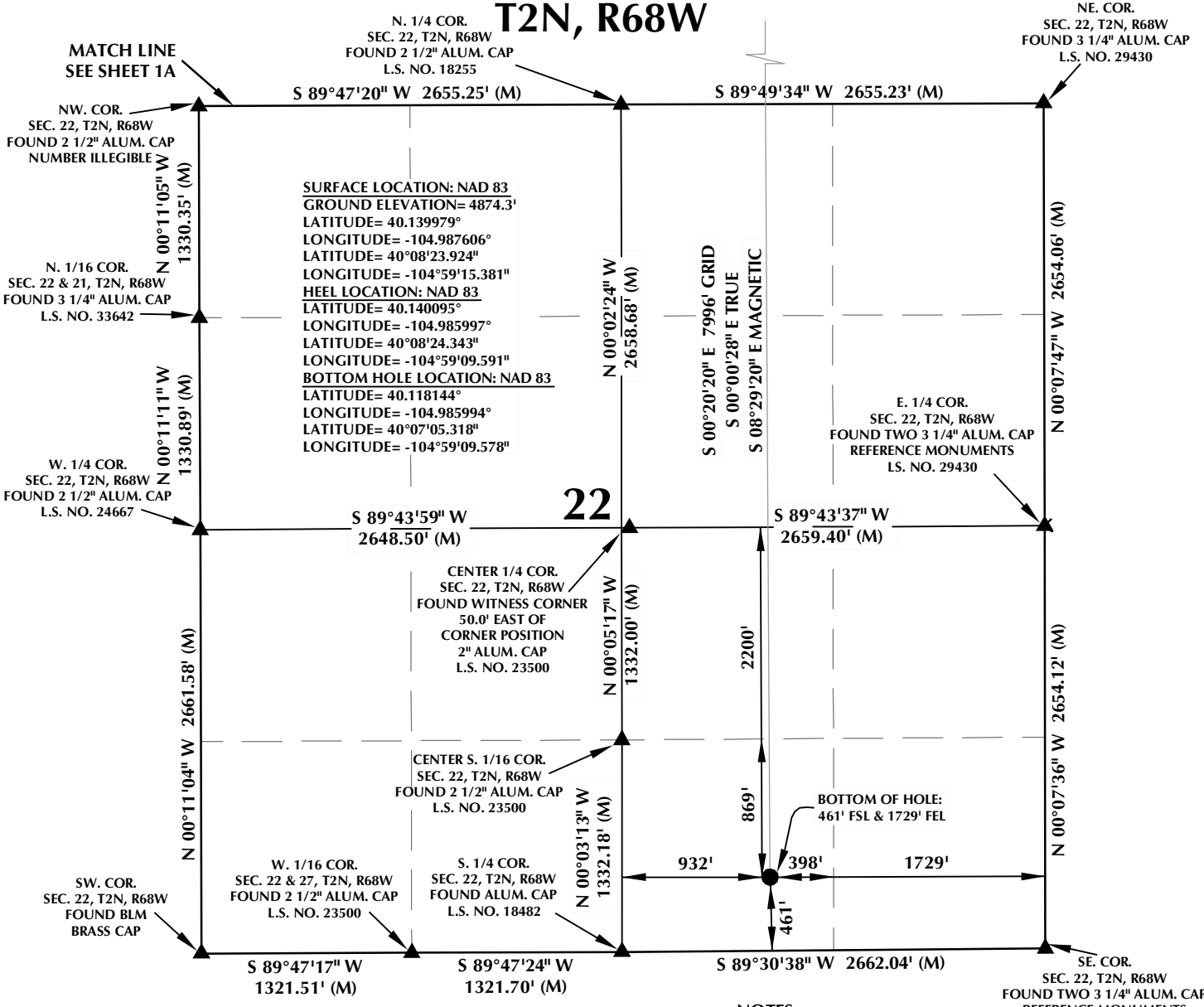


**CONSULTING, LLC**  
 SHERIDAN OFFICE: 1095 Saberton Avenue, Sheridan, Wyoming 82801, Phone 307-674-0609  
 LOVELAND OFFICE: 1635 Foxtrail Drive, Suite 204, Loveland, Colorado 80538, Phone 970-776-4331

DRAFTED BY: LMO	CHECKED BY: REM	SHEET NO: <b>1A</b> 1A OF 1
DATE DRAFTED: 9/28/15	DATE SURVEYED: 7/15/15	
REVISED:	FILE NAME: 15-23	

K:\VARDARCO\2015\23\_CAMENISCH\_SEC.15\_T2N\_R68W\PLAT\CAMENISCH\_36N22HZ.dwg, 9/29/2015 11:18:11 AM, RWR

# T2N, R68W



**SURFACE LOCATION: NAD 83**  
 GROUND ELEVATION= 4874.3'  
 LATITUDE= 40.139979°  
 LONGITUDE= -104.987606°  
 LATITUDE= 40°08'23.924"  
 LONGITUDE= -104°59'15.381"  
**HEEL LOCATION: NAD 83**  
 LATITUDE= 40.140095°  
 LONGITUDE= -104.985997°  
 LATITUDE= 40°08'24.343"  
 LONGITUDE= -104°59'09.591"  
**BOTTOM HOLE LOCATION: NAD 83**  
 LATITUDE= 40.118144°  
 LONGITUDE= -104.985994°  
 LATITUDE= 40°07'05.318"  
 LONGITUDE= -104°59'09.578"

**22**

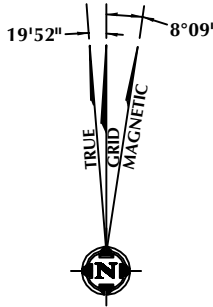
### CERTIFICATE OF SURVEYOR:

THIS IS TO CERTIFY THAT THE ABOVE PLAT WAS PREPARED FROM FIELD NOTES OF ACTUAL SURVEY MADE BY ME OR UNDER MY SUPERVISION AND THAT THE SAME ARE TRUE AND CORRECT TO THE BEST OF MY KNOWLEDGE AND BELIEF. THIS CERTIFICATE DOES NOT REPRESENT A LAND SURVEY PLAT OR IMPROVEMENT SURVEY PLAT AS DEFINED BY C.R.S. 38-510-102 AND CANNOT BE RELIED UPON TO DETERMINE OWNERSHIP.

*Richard E. Mariotti*  
 PROFESSIONAL LAND SURVEYOR  
 COLORADO REGISTRATION NUMBER 22573

RICHARD E. MARIOTTI  
 PROFESSIONAL LAND SURVEYOR  
 COLORADO REGISTRATION NUMBER 22573

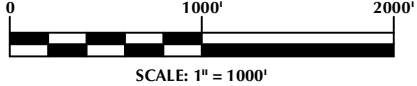
NOTICE:  
 ACCORDING TO COLORADO STATE LAW YOU MUST COMMENCE ANY LEGAL ACTION BASED UPON ANY DEFECT IN THIS SURVEY WITHIN THREE YEARS AFTER YOU FIRST DISCOVER SUCH DEFECT. IN NO EVENT MAY ANY ACTION BASED UPON ANY DEFECT IN THIS SURVEY BE COMMENCED MORE THAN TEN YEARS FROM THE DATE ON THE CERTIFICATION SHOWN HEREON.



NOTE:  
 MAGNETIC NORTH IS CURRENT AS OF 9/10/2015.  
 MAGNETIC NORTH CHANGES WEST 0°06' PER YEAR.

### NOTES:

- ▲ INDICATES FOUND SECTION CORNER
- INDICATES CALCULATED CORNER
- ELEVATION BASED ON NAVD88 (GEOID09)
- BASIS OF BEARING DERIVED FROM COLORADO COORDINATE SYSTEM 1983 NORTH ZONE UNLESS OTHERWISE NOTED.
- ALL MEASURED DISTANCES ARE GRID.
- COMBINED SCALE FACTOR: .99972911
- OPERATOR: ROB WILSON / PDOP = 1.5
- SEE ADDENDUM TO WELL LOCATION CERTIFICATE FOR EXISTING IMPROVEMENTS WITHIN 500' OF THE WELL PAD.
- WELL FOOTAGES ARE MEASURED AT RIGHT ANGLES TO THE SECTION LINES.
- THE BOTTOM OF HOLE BEARS S00°20'20"E, 7996' FROM THE HEEL LOCATION.



### WELL PAD - CAMENISCH 36N-22HZ

CAMENISCH 15N-22HZ  
 WELL LOCATION CERTIFICATE  
 2229' FNL & 2193' FEL SWNE (SURFACE)  
 2184' FNL & 1743' FEL SWNE (HEEL)  
 LOCATED IN SECTION 15  
 461' FSL & 1729' FEL SWSE (BOTTOM)  
 LOCATED IN SECTION 22  
 T2N, R68W, 6TH P.M.  
 WELD COUNTY, COLORADO

**Kerr-McGee Oil &  
 Gas Onshore L.P.**  
 1099 18th Street  
 Denver, Colorado 80202



### CONSULTING, LLC

SHERIDAN OFFICE  
 1095 Saberton Avenue  
 Sheridan, Wyoming 82801  
 Phone 307-674-0609

LOVELAND OFFICE  
 1635 Foxtrail Drive, Suite 204  
 Loveland, Colorado 80538  
 Phone 970-776-4331

DRAFTED BY: LMO	CHECKED BY: REM	SHEET NO: <b>1B</b> 1B OF 1
DATE DRAFTED: 9/28/15	DATE SURVEYED: 7/15/15	
REVISED:	FILE NAME: 15-23	

K:\VADARCO\2015\23\_CAMENISCH\_SEC.15\_T2N\_R68W\PLAT\CAMENISCH\_36N22HZ.dwg, 9/29/2015 11:18:28 AM, RWR