

CAMENISCH SITING RATIONALE

Factors that impacted the placement of the production facility on this location:

- Pipeline ROW running along the west side of the property
- 150' setback around the barn on the NE
- 150' setbacks between wells and the production facility
- The pond on the north side of the property, which frequently floods

The two existing production facilities on this location will be removed. The facility next to the pond was not viable for expansion due to the fact that the pond floods and creates operational issues. We were unable to place this facility in the area of the existing facility on the east side of the property due to space constraints related to the size of this new facility. We are constrained by a 150' setback from the barn and the southern and eastern boundaries of the property.

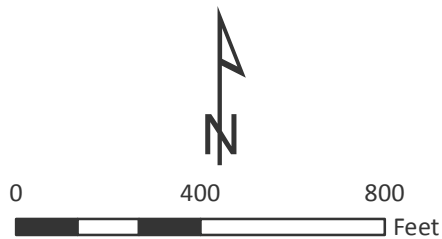
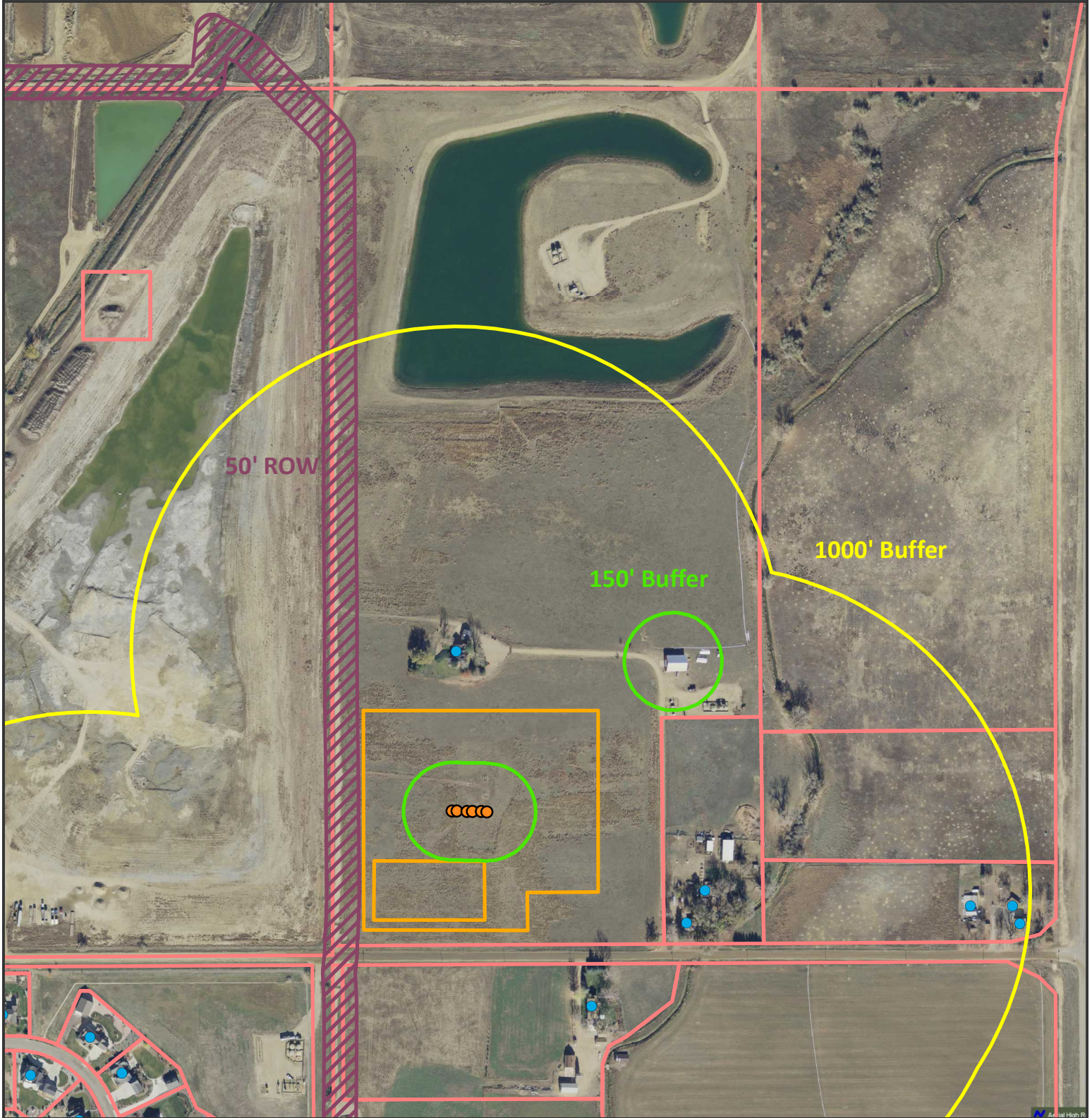
The production facility on this location was placed as far away as possible from the building units to the east and southeast of the property. Pipelines along the west of the property prevented the facility from moving any further west. The building unit owner to the southwest of location is a surface owner that KMG has a relationship with as a result of oil and gas development on their property.

Areas on the surface owner's property that would have resulted in this production facility being outside the Buffer Zone or Exception Zone were unavailable to oil and gas development due to the surface owner's future development plans on the north side of the property. The overall disturbance for this location was condensed to the maximum extent to allow for this future development.

Another item to note is that this production facility is more than twice as far away from the neighborhood to the southwest as the existing Encana facility.

CAMENISCH 36N-22HZ SITING RATIONALE

SW1/4 NE1/4 SECTION 15, TWN 2N, R 68W, 6TH P.M.



- Legend**
- Wells
 - Building Units
 - ▭ Pad (Proposed)
 - ▭ Weld County Parcels



Date created: 1/29/2016
Created by: APC Regulatory GIS
Scale: 1:5,000
Projection: NAD83 UTM 13N