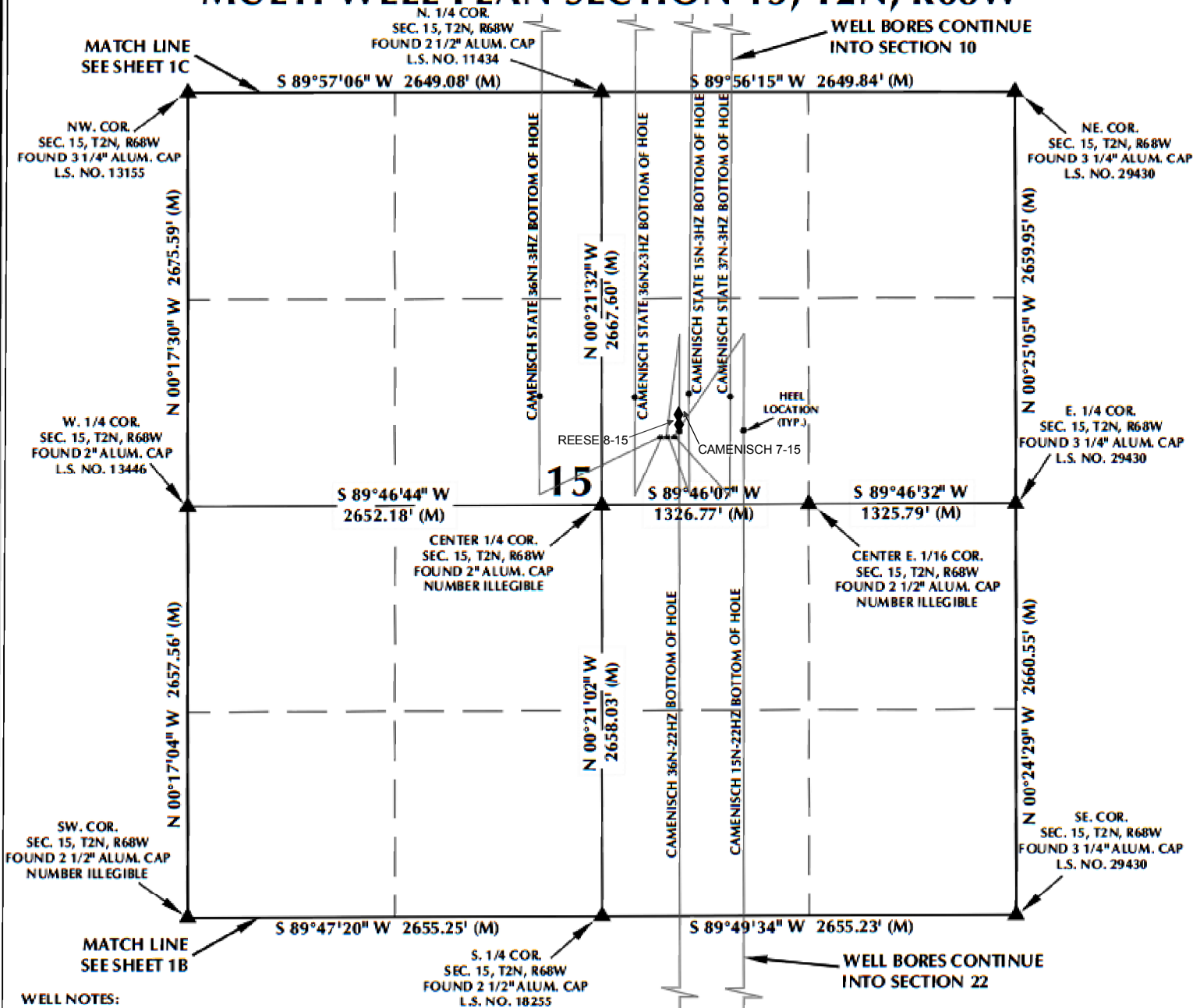


MULTI-WELL PLAN SECTION 15, T2N, R68W



WELL NOTES:

CAMENISCH STATE 36N1-3HZ
SURFACE: 2228' FNL, 2283' FEL
BOTTOM HOLE: 410' FSL, 2242' FWL

CAMENISCH STATE 36N2-3HZ
SURFACE: 2228' FNL, 2268' FEL
BOTTOM HOLE: 410' FSL, 2464' FEL

CAMENISCH 36N-22HZ
SURFACE: 2228' FNL, 2238' FEL
BOTTOM HOLE: 461' FSL, 2140' FEL

CAMENISCH STATE 15N-3HZ
SURFACE: 2228' FNL, 2223' FEL
BOTTOM HOLE: 410' FSL, 2063' FEL

CAMENISCH 15N-22HZ
SURFACE: 2229' FNL, 2193' FEL
BOTTOM HOLE: 461' FSL, 1729' FEL

CAMENISCH STATE 37N-3HZ
SURFACE: 2229' FNL, 2178' FEL
BOTTOM HOLE: 410' FSL, 1837' FEL

NOTES:

1. ▲ INDICATES FOUND SECTION CORNER
2. ● INDICATES CALCULATED CORNER
3. BASIS OF BEARING DERIVED FROM COLORADO COORDINATE SYSTEM 1983 NORTH ZONE UNLESS OTHERWISE NOTED.
4. ALL MEASURED DISTANCES ARE GRID. COMBINED SCALE FACTOR: .99972911
5. WELL FOOTAGES ARE MEASURED AT RIGHT ANGLES TO THE SECTION LINES.

WELL PAD - CAMENISCH 36N-22HZ

MULTI-WELL PLAN
CAMENISCH STATE 36N1-3HZ, CAMENISCH STATE 36N2-3HZ,
CAMENISCH 36N-22HZ, CAMENISCH STATE 15N-3HZ,
CAMENISCH 15N-22HZ & CAMENISCH STATE 37N-3HZ
LOCATED IN SECTIONS 3, 10, 15 & 22
T2N, R68W, 6TH P.M.
WELD COUNTY, COLORADO

**Kerr-McGee Oil &
Gas Onshore L.P.**

1099 18th Street
Denver, Colorado 80202



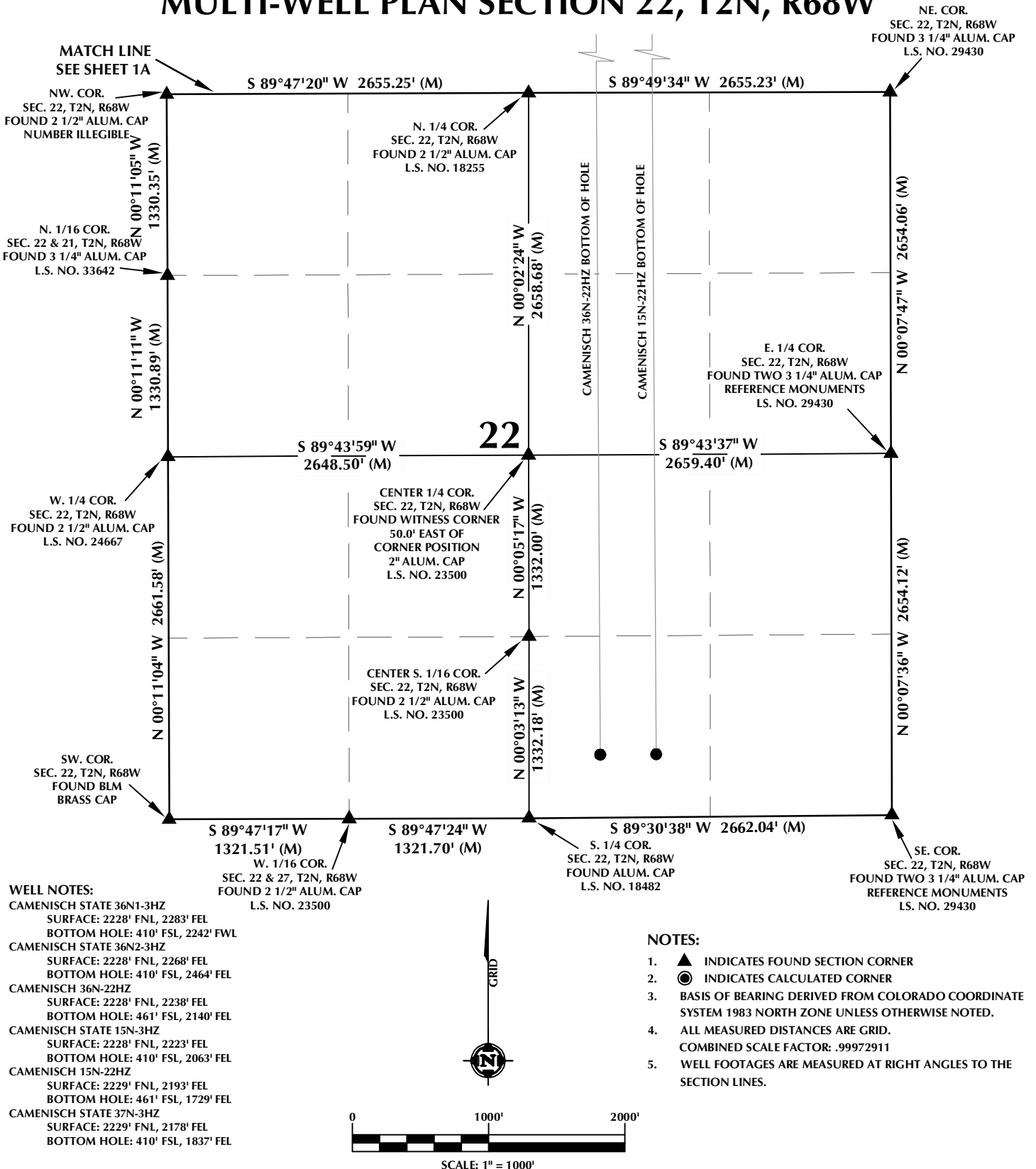
CONSULTING, LLC

SHERIDAN OFFICE 1095 Saberton Avenue Sheridan, Wyoming 82801 Phone 307-674-0609

LOVELAND OFFICE 1635 Foxtrail Drive, Suite 204 Loveland, Colorado 80538 Phone 970-776-4331

DRAFTED BY: MDZ	CHECKED BY: REM	SHEET NO: 1A
DATE DRAFTED: 9/28/15	DATE SURVEYED: 7/15/15	1A OF 1
REVISED:	FILE NAME: 15-23	

MULTI-WELL PLAN SECTION 22, T2N, R68W



WELL PAD - CAMENISCH 36N-22HZ

MULTI-WELL PLAN
CAMENISCH STATE 36N1-3HZ, CAMENISCH STATE 36N2-3HZ,
CAMENISCH 36N-22HZ, CAMENISCH STATE 15N-3HZ,
CAMENISCH 15N-22HZ & CAMENISCH STATE 37N-3HZ
LOCATED IN SECTIONS 3, 10, 15 & 22
T2N, R68W, 6TH P.M.
WELD COUNTY, COLORADO

**Kerr-McGee Oil &
Gas Onshore L.P.**
1099 18th Street
Denver, Colorado 80202



CONSULTING, LLC

SHERIDAN OFFICE
1095 Saberton Avenue
Sheridan, Wyoming 82801
Phone 307-674-0609

LOVELAND OFFICE
1635 Foxtrail Drive, Suite 204
Loveland, Colorado 80538
Phone 970-776-4331

DRAFTED BY:	MDZ	CHECKED BY:	REM	SHEET NO:
DATE DRAFTED:	9/28/15	DATE SURVEYED:	7/15/15	1B
REVISED:		FILE NAME:	15-23	1B OF 1

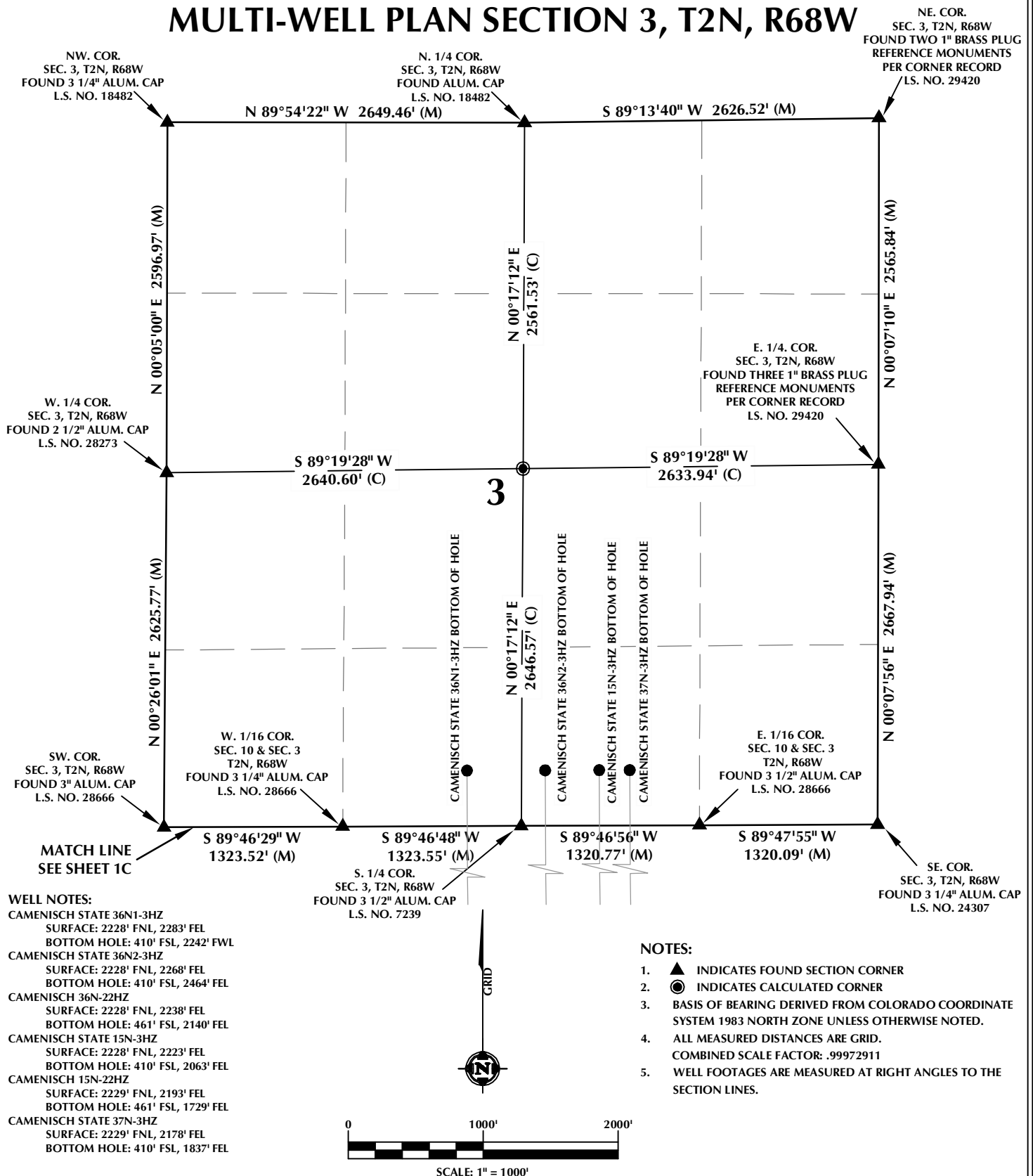
C:\ANADARKO\2015\2015_23_CAMENISCH SEC_15_T2N_R68W\PLATS\CAMENISCH M-W PLAN.dwg, 9/29/2015 11:41:40 AM, jake



-
- 0 1000' 2000'
- SCALE: 1" = 1000'

DRAFTED BY: MDZ	CHECKED BY: REM	SHEET NO: <div style="font-size: 2em; font-weight: bold;">1C</div> 1C OF 1
DATE DRAFTED: 9/28/15	DATE SURVEYED: 7/15/15	
REVISED:	FILE NAME: 15-23	

MULTI-WELL PLAN SECTION 3, T2N, R68W



WELL PAD - CAMENISCH 36N-22HZ

MULTI-WELL PLAN
CAMENISCH STATE 36N1-3HZ, CAMENISCH STATE 36N2-3HZ,
CAMENISCH 36N-22HZ, CAMENISCH STATE 15N-3HZ,
CAMENISCH 15N-22HZ & CAMENISCH STATE 37N-3HZ
LOCATED IN SECTIONS 3, 10, 15 & 22
T2N, R68W, 6TH P.M.
WELD COUNTY, COLORADO

**Kerr-McGee Oil &
Gas Onshore L.P.**
1099 18th Street
Denver, Colorado 80202



CONSULTING, LLC

SHERIDAN OFFICE
1095 Saberton Avenue
Sheridan, Wyoming 82801
Phone 307-674-0609

LOVELAND OFFICE
1635 Foxtrail Drive, Suite 204
Loveland, Colorado 80538
Phone 970-776-4331

DRAFTED BY:	MDZ	CHECKED BY:	REM	SHEET NO:
DATE DRAFTED:	9/28/15	DATE SURVEYED:	7/15/15	1D
REVISED:		FILE NAME:	15-23	1D OF 1