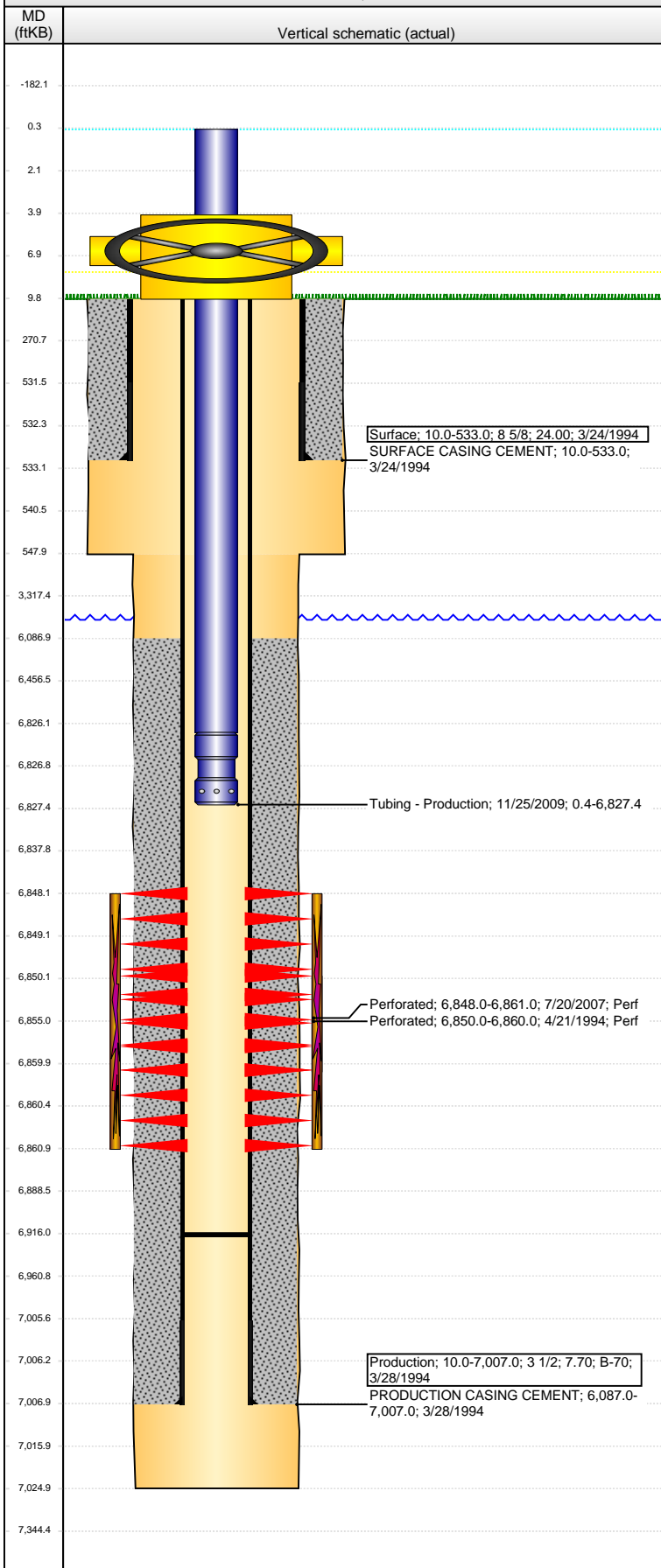


Well Name: UPV 25-0114

VERTICAL - ORIGINAL HOLE, 2/4/2016 10:49:04 AM



Well Header									
API 05-123-18057		Business Unit DJ BASIN		District 15		Well Config VERTICAL			
Original KB Elevation (ft) 4,797.00		KB - GL / MSL (ftKB) 10.00		Spud Date 3/23/1994		P & A Date			
Comment was frac'd inyo 6/03 by 25-214									
Directions To Well WCR 40 & WCR 57, S 1.0, E 2.0, N 1.7 INTO									
Congressional Location									
Quarter 1	Quarter 2	Quarter 3 NE	Quarter 4 NE	Section 25	Township 4 N	Twnshp N...	Range 64	Rng E/W Dir W	
Bottom Hole Location									
North-South Distance (ft)		From N or S Line		East-West Distance (ft)			From E or W Line		
Plug Back Total Depths									
Date	Depth (ftKB)	Method			Com				
3/28/1994	6,952.0	TAG							
11/25/2009	6,916.0	TUBING TALLY			55' OF RAT HOLE				
Wellbore Sections									
Section Des		Size (in)		Act Top, MD (ftKB)		Act Btm, MD (ftKB)			
SURFACE		12 1/4		10.0		548.0			
PRODUCTION		7 7/8		548.0		7,025.0			
Zone Statuses									
Zone Name	Status Date	Status	Fluid Type	Job	Prod Method				
CODELL	5/2/1994	PR	Oil	DRILLING/CO...					
Casing Strings									
Surface, 533.0ftKB									
Casing Description Surface		Run Date 3/24/1994	OD (in) 8 5/8	Wt/Len (l... 24.00	Grade	Top, MD (ft... 10.0	MD (ftKB) 533.0		
Production, 7,007.0ftKB									
Casing Description Production		Run Date 3/28/1994	OD (in) 3 1/2	Wt/Len (l... 7.70	Grade B-70	Top, MD (ft... 10.0	MD (ftKB) 7,007.0		
Cement									
Description SURFACE CASING CEMENT				Top Depth (ftKB) 10.0		Bottom Depth (ftKB) 533.0			
Description PRODUCTION CASING CEMENT				Top Depth (ftKB) 6,087.0		Bottom Depth (ftKB) 7,007.0			
Tubing Strings									
Tubing Description Tubing - Production		Run Date 8/13/2007	String... 2 1/16	ID (in) 1.751	Wt (lb/ft) 3.25	Grade J-55	Len (ft) 6,815.00	Set De...	
Tubing Description Tubing - Production		Run Date 11/25/2009	String... 2 1/16	ID (in) 1.751	Wt (lb/ft) 3.25	Grade J-55	Len (ft) 6,827.00	Set De...	
Tubing Components									
Item Des		OD (in)	Wt (lb/ft)	Grade	Jts	Len (ft)	Btm (ftKB)	Btm (TVD) (ftKB)	
Tubing		2 1/16	3.25	J-55	210	6,825.90	6,826.3		
Pump Seating Nipple		2 1/16	3.25	J-55	1	1.10	6,827.4		
Perforation Data									
Zone		Bnch/St g	Entered Shot Total	Top (ftKB)		Btm (ftKB)		Date	
CODELL, ORIGINAL HOLE			51	6,848.00		6,861.00		7/20/2007	
CODELL, ORIGINAL HOLE			20	6,850.00		6,860.00		4/21/1994	
Stimulations & Treatments									
Date 4/26/1994	Zone CODELL, ORIGINAL HOLE			Primary Job Type DRILLING/COMPLETION - ORIGINAL					
Technical Result			Tech Result Details			Tech Result Note			
Comment 									
Date 8/2/2007	Zone CODELL, ORIGINAL HOLE			Primary Job Type RE-FRAC					
Technical Result Failure			Tech Result Details Screen-out			Tech Result Note			
Comment screen out									

Well Name: UPV 25-0114

VERTICAL - ORIGINAL HOLE, 2/4/2016 10:49:07 AM

Other In Hole

Run Date	Des	OD (in)	Top (ftKB)	Btm (ftKB)

Logs

Date	Type	Top, MD (ftKB)	Btm, MD (ftKB)
3/28/1994	INDUCTION	533.0	7,021.0
4/21/1994	GAMMA RAY	6,390.0	6,894.0
2/22/2011	GYRO	10.0	6,800.0

