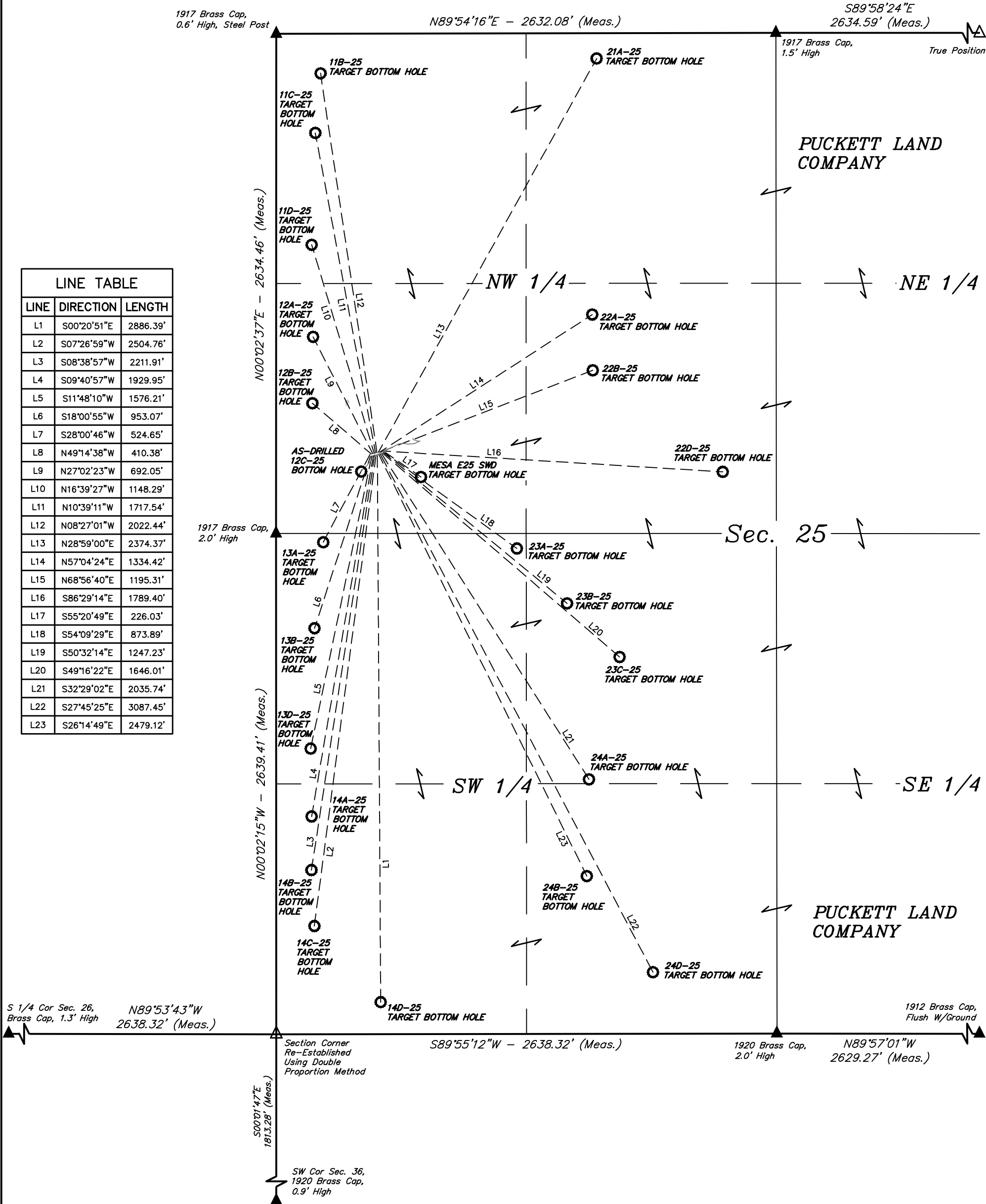


LINE TABLE		
LINE	DIRECTION	LENGTH
L1	S00°20'51"E	2886.39'
L2	S07°26'59"W	2504.76'
L3	S08°38'57"W	2211.91'
L4	S09°40'57"W	1929.95'
L5	S11°48'10"W	1576.21'
L6	S18°00'55"W	953.07'
L7	S28°00'46"W	524.65'
L8	N49°14'38"W	410.38'
L9	N27°02'23"W	692.05'
L10	N16°39'27"W	1148.29'
L11	N10°39'11"W	1717.54'
L12	N08°27'01"W	2022.44'
L13	N28°59'00"E	2374.37'
L14	N57°04'24"E	1334.42'
L15	N68°56'40"E	1195.31'
L16	S86°29'14"E	1789.40'
L17	S55°20'49"E	226.03'
L18	S54°09'29"E	873.89'
L19	S50°32'14"E	1247.23'
L20	S49°16'22"E	1646.01'
L21	S32°29'02"E	2035.74'
L22	S27°45'25"E	3087.45'
L23	S26°14'49"E	2479.12'



Caerus Oil & Gas LLC

MESA E25-697 ON EXISTING PUCKETT 12C-25 PAD
SW 1/4 NW 1/4, SECTION 25, T6S, R97W, 6th P.M.
GARFIELD COUNTY, COLORADO

SURVEYED BY	DATE	REVISED BY	DATE
BRADEN BOX, B.B.	12-14-15		
DRAWN BY	DATE		
C.D.L.	01-04-16		

MULTI-WELL PLAN

FIGURE #7



UELS, LLC
Corporate Office * 85 South 200 East
Vernal, UT 84078 * (435) 789-1017