



SECTION DETAILS

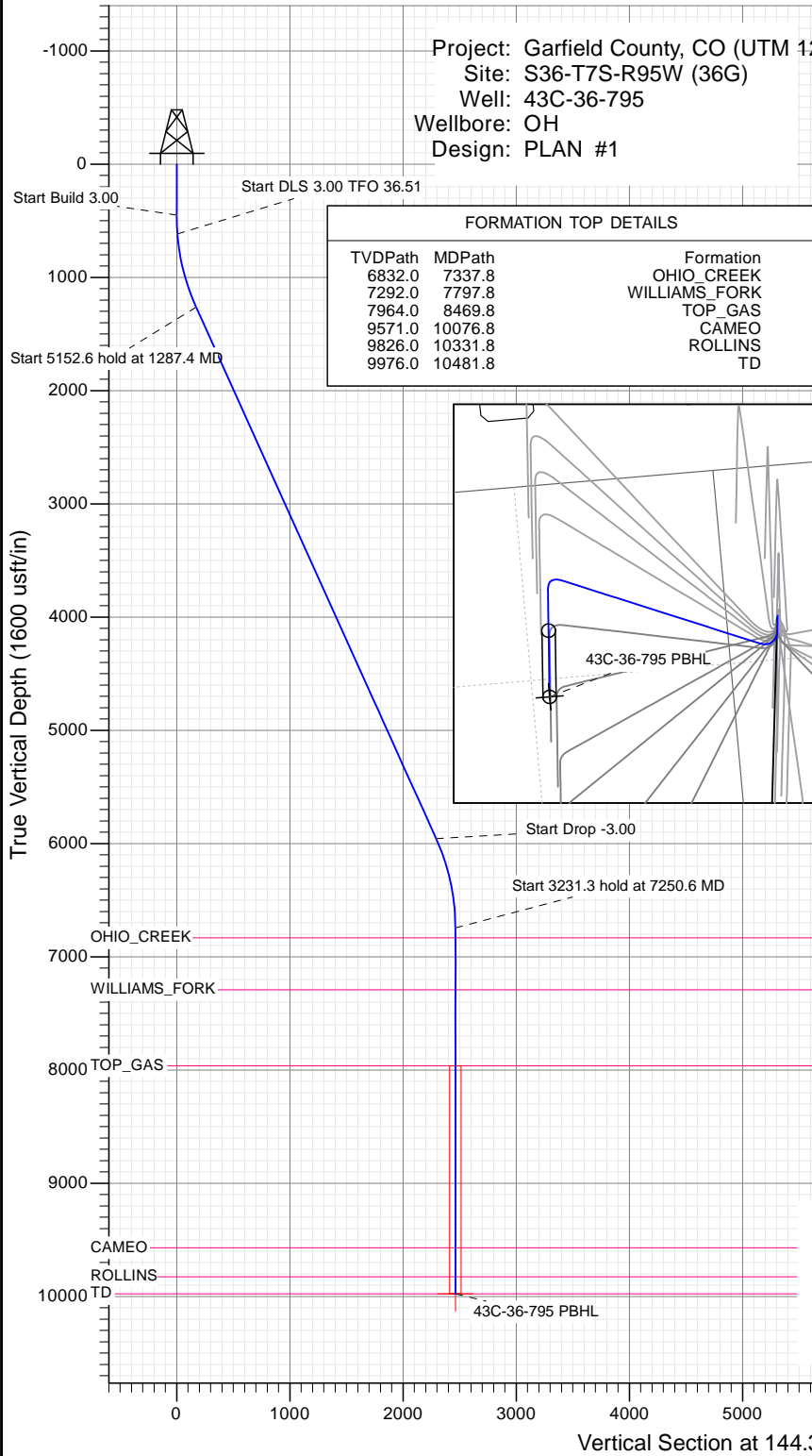
Sec	MD	Inc	Azi	TVD	+N/-S	+E/-W	Dleg	TFace	VSect	Target
1	0.0	0.00	0.00	0.0	0.0	0.0	0.00	0.00	0.0	
2	450.0	0.00	0.00	450.0	0.0	0.0	0.00	0.00	0.0	
3	616.7	5.00	115.00	616.5	-3.1	6.6	3.00	115.00	6.3	
4	1287.4	24.32	144.81	1262.9	-129.6	113.8	3.00	36.51	171.6	
5	6440.0	24.32	144.81	5958.3	-1863.6	1336.5	0.00	0.00	2293.3	
6	7250.6	0.00	0.00	6744.7	-2002.1	1434.2	3.00	180.00	2462.7	
7	10481.8	0.00	0.00	9976.0	-2002.1	1434.2	0.00	0.00	2462.7	43C-36-795 PBHL

Project: Garfield County, CO (UTM 12
 Site: S36-T7S-R95W (36G)
 Well: 43C-36-795
 Wellbore: OH
 Design: PLAN #1

PLAN #1
 43C-36-795
 15XXX LR
 KB @ 8922.0usft
 Ground Level @ 8872.0
 NAD 1927 - Western US
 Well 43C-36-795, True North

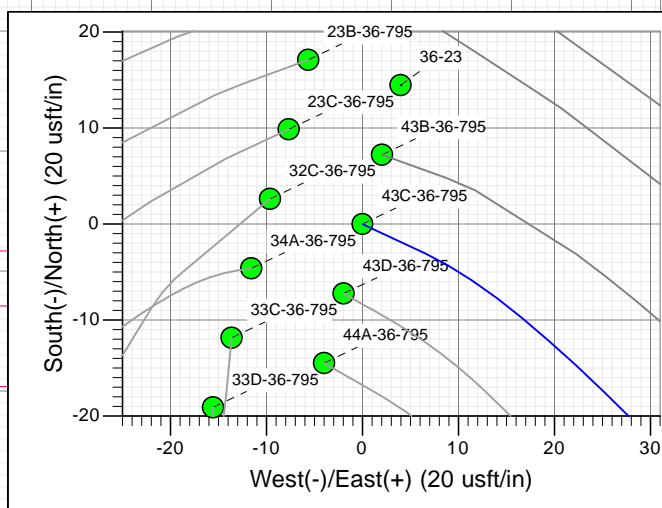
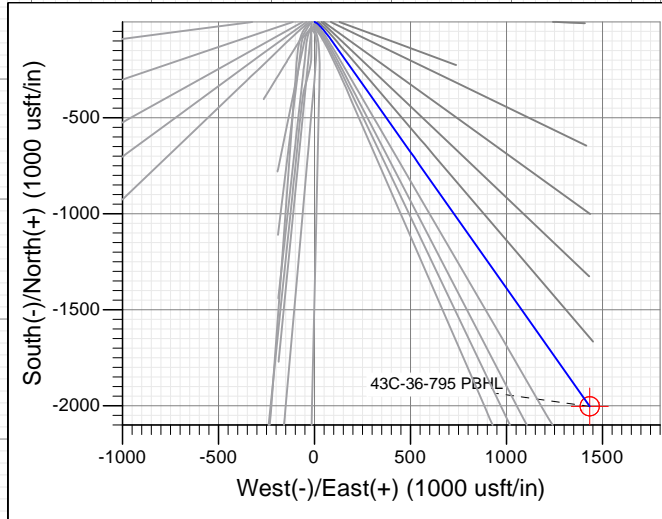
Type	Target	Azimuth	Origin Type	N/S	E/W	From TVD
TD	No Target (Freehand)	144.38	Slot	0.0	0.0	0.0

Name	TVD	+N/-S	+E/-W	Latitude	Longitude
43C-36-795 PBHL	9976.0	-2002.1	1434.2	39.390083	-107.936474



FORMATION TOP DETAILS

TVDPPath	MDPath	Formation
6832.0	7337.8	OHIO_CREEK
7292.0	7797.8	WILLIAMS_FORK
7964.0	8469.8	TOP_GAS
9571.0	10076.8	CAMEO
9826.0	10331.8	ROLLINS
9976.0	10481.8	TD



T M
 Azimuths to True North
 Magnetic North: 9.40°
 Magnetic Field
 Strength: 51872.9snT
 Dip Angle: 65.60°
 Date: 12/28/2015
 Model: HDGM

CASING DETAILS

No casing data is available



WELL DETAILS: 43C-36-795

+N/-S	+E/-W	Northing	Ground Level:	8872.0	Latitude	Longitude
0.0	0.0	14320610.80	Easting	2504546.50	39.395578	-107.941546



Planning Report

Database:	USA EDM 5000 Multi Users DB	Local Co-ordinate Reference:	Well 43C-36-795
Company:	Caerus Oil & Gas	TVD Reference:	KB @ 8902.0usft
Project:	Garfield County, CO (UTM 12N)	MD Reference:	KB @ 8902.0usft
Site:	S36-T7S-R95W (36G)	North Reference:	True
Well:	43C-36-795	Survey Calculation Method:	Minimum Curvature
Wellbore:	OH		
Design:	PLAN #1		

Project Garfield County, CO (UTM 12N)			
Map System:	Universal Transverse Mercator (US Survey Feet)	System Datum:	Mean Sea Level
Geo Datum:	NAD 1927 - Western US		
Map Zone:	Zone 12N (114 W to 108 W)		

Site S36-T7S-R95W (36G)			
Site Position:		Northing:	14,320,581.60 usft
From:	Map	Easting:	2,504,539.60 usft
Position Uncertainty:	0.0 usft	Slot Radius:	13-3/16"
		Latitude:	39.395498
		Longitude:	-107.941574
		Grid Convergence:	1.94 °

Well 43C-36-795			
Well Position	+N/-S	0.0 usft	Northing:
	+E/-W	0.0 usft	Easting:
			14,320,610.80 usft
			Latitude:
			39.395578
			Longitude:
			-107.941546
Position Uncertainty		0.0 usft	Wellhead Elevation:
			0.0 usft
			Ground Level:
			8,872.0 usft

Wellbore OH					
Magnetics	Model Name	Sample Date	Declination (°)	Dip Angle (°)	Field Strength (nT)
	HDGM	12/28/2015	9.40	65.60	51,873

Design PLAN #1				
Audit Notes:				
Version:	Phase:	PLAN	Tie On Depth:	0.0
Vertical Section:	Depth From (TVD) (usft)	+N/-S (usft)	+E/-W (usft)	Direction (°)
	0.0	0.0	0.0	144.38

Plan Sections										
Measured Depth (usft)	Inclination (°)	Azimuth (°)	Vertical Depth (usft)	+N/-S (usft)	+E/-W (usft)	Dogleg Rate (°/100usft)	Build Rate (°/100usft)	Turn Rate (°/100usft)	TFO (°)	Target
0.0	0.00	0.00	0.0	0.0	0.0	0.00	0.00	0.00	0.00	
450.0	0.00	0.00	450.0	0.0	0.0	0.00	0.00	0.00	0.00	
616.7	5.00	115.00	616.5	-3.1	6.6	3.00	3.00	0.00	115.00	
1,287.4	24.32	144.81	1,262.9	-129.6	113.8	3.00	2.88	4.44	36.51	
6,440.0	24.32	144.81	5,958.3	-1,863.6	1,336.5	0.00	0.00	0.00	0.00	
7,250.6	0.00	0.00	6,744.7	-2,002.1	1,434.2	3.00	-3.00	0.00	180.00	
10,481.8	0.00	0.00	9,976.0	-2,002.1	1,434.2	0.00	0.00	0.00	0.00	43C-36-795 PBHL

Planning Report

Database:	USA EDM 5000 Multi Users DB	Local Co-ordinate Reference:	Well 43C-36-795
Company:	Caerus Oil & Gas	TVD Reference:	KB @ 8902.0usft
Project:	Garfield County, CO (UTM 12N)	MD Reference:	KB @ 8902.0usft
Site:	S36-T7S-R95W (36G)	North Reference:	True
Well:	43C-36-795	Survey Calculation Method:	Minimum Curvature
Wellbore:	OH		
Design:	PLAN #1		

Planned Survey									
Measured Depth (usft)	Inclination (°)	Azimuth (°)	Vertical Depth (usft)	+N/-S (usft)	+E/-W (usft)	Vertical Section (usft)	Dogleg Rate (°/100usft)	Build Rate (°/100u)	Comments / Formations
0.0	0.00	0.00	0.0	0.0	0.0	0.0	0.00	0.00	
100.0	0.00	0.00	100.0	0.0	0.0	0.0	0.00	0.00	
200.0	0.00	0.00	200.0	0.0	0.0	0.0	0.00	0.00	
300.0	0.00	0.00	300.0	0.0	0.0	0.0	0.00	0.00	
400.0	0.00	0.00	400.0	0.0	0.0	0.0	0.00	0.00	
450.0	0.00	0.00	450.0	0.0	0.0	0.0	0.00	0.00	Start Build 3.00
500.0	1.50	115.00	500.0	-0.3	0.6	0.6	3.00	3.00	
600.0	4.50	115.00	599.8	-2.5	5.3	5.1	3.00	3.00	
616.7	5.00	115.00	616.5	-3.1	6.6	6.3	3.00	3.00	Start DLS 3.00 TFO 36.51
700.0	7.17	127.01	699.3	-7.7	14.0	14.5	3.00	2.60	
800.0	9.97	134.23	798.2	-17.5	25.2	28.9	3.00	2.81	
900.0	12.86	138.27	896.2	-31.9	38.8	48.5	3.00	2.89	
1,000.0	15.80	140.83	993.1	-50.7	54.8	73.2	3.00	2.93	
1,100.0	18.75	142.61	1,088.6	-74.1	73.2	102.8	3.00	2.95	
1,200.0	21.72	143.92	1,182.4	-101.8	93.9	137.4	3.00	2.97	
1,287.4	24.32	144.81	1,262.9	-129.6	113.8	171.6	3.00	2.97	Start 5152.6 hold at 1287.4 MD
1,300.0	24.32	144.81	1,274.3	-133.8	116.8	176.8	0.00	0.00	
1,400.0	24.32	144.81	1,365.4	-167.5	140.5	218.0	0.00	0.00	
1,500.0	24.32	144.81	1,456.6	-201.1	164.2	259.1	0.00	0.00	
1,600.0	24.32	144.81	1,547.7	-234.8	187.9	300.3	0.00	0.00	
1,700.0	24.32	144.81	1,638.8	-268.4	211.7	341.5	0.00	0.00	
1,800.0	24.32	144.81	1,729.9	-302.1	235.4	382.7	0.00	0.00	
1,900.0	24.32	144.81	1,821.1	-335.7	259.1	423.8	0.00	0.00	
2,000.0	24.32	144.81	1,912.2	-369.4	282.9	465.0	0.00	0.00	
2,100.0	24.32	144.81	2,003.3	-403.0	306.6	506.2	0.00	0.00	
2,200.0	24.32	144.81	2,094.5	-436.7	330.3	547.4	0.00	0.00	
2,300.0	24.32	144.81	2,185.6	-470.4	354.1	588.6	0.00	0.00	
2,400.0	24.32	144.81	2,276.7	-504.0	377.8	629.7	0.00	0.00	
2,500.0	24.32	144.81	2,367.8	-537.7	401.5	670.9	0.00	0.00	
2,600.0	24.32	144.81	2,459.0	-571.3	425.3	712.1	0.00	0.00	
2,700.0	24.32	144.81	2,550.1	-605.0	449.0	753.3	0.00	0.00	
2,800.0	24.32	144.81	2,641.2	-638.6	472.7	794.4	0.00	0.00	
2,900.0	24.32	144.81	2,732.4	-672.3	496.4	835.6	0.00	0.00	
3,000.0	24.32	144.81	2,823.5	-705.9	520.2	876.8	0.00	0.00	
3,100.0	24.32	144.81	2,914.6	-739.6	543.9	918.0	0.00	0.00	
3,200.0	24.32	144.81	3,005.7	-773.2	567.6	959.2	0.00	0.00	
3,300.0	24.32	144.81	3,096.9	-806.9	591.4	1,000.3	0.00	0.00	
3,400.0	24.32	144.81	3,188.0	-840.5	615.1	1,041.5	0.00	0.00	
3,500.0	24.32	144.81	3,279.1	-874.2	638.8	1,082.7	0.00	0.00	
3,600.0	24.32	144.81	3,370.2	-907.8	662.6	1,123.9	0.00	0.00	
3,700.0	24.32	144.81	3,461.4	-941.5	686.3	1,165.0	0.00	0.00	
3,800.0	24.32	144.81	3,552.5	-975.1	710.0	1,206.2	0.00	0.00	
3,900.0	24.32	144.81	3,643.6	-1,008.8	733.8	1,247.4	0.00	0.00	
4,000.0	24.32	144.81	3,734.8	-1,042.5	757.5	1,288.6	0.00	0.00	
4,100.0	24.32	144.81	3,825.9	-1,076.1	781.2	1,329.7	0.00	0.00	
4,200.0	24.32	144.81	3,917.0	-1,109.8	804.9	1,370.9	0.00	0.00	
4,300.0	24.32	144.81	4,008.1	-1,143.4	828.7	1,412.1	0.00	0.00	
4,400.0	24.32	144.81	4,099.3	-1,177.1	852.4	1,453.3	0.00	0.00	
4,500.0	24.32	144.81	4,190.4	-1,210.7	876.1	1,494.5	0.00	0.00	
4,600.0	24.32	144.81	4,281.5	-1,244.4	899.9	1,535.6	0.00	0.00	
4,700.0	24.32	144.81	4,372.7	-1,278.0	923.6	1,576.8	0.00	0.00	
4,800.0	24.32	144.81	4,463.8	-1,311.7	947.3	1,618.0	0.00	0.00	

Planning Report

Database:	USA EDM 5000 Multi Users DB	Local Co-ordinate Reference:	Well 43C-36-795
Company:	Caerus Oil & Gas	TVD Reference:	KB @ 8902.0usft
Project:	Garfield County, CO (UTM 12N)	MD Reference:	KB @ 8902.0usft
Site:	S36-T7S-R95W (36G)	North Reference:	True
Well:	43C-36-795	Survey Calculation Method:	Minimum Curvature
Wellbore:	OH		
Design:	PLAN #1		

Planned Survey									
Measured Depth (usft)	Inclination (°)	Azimuth (°)	Vertical Depth (usft)	+N/-S (usft)	+E/-W (usft)	Vertical Section (usft)	Dogleg Rate (°/100usft)	Build Rate (°/100u)	Comments / Formations
4,900.0	24.32	144.81	4,554.9	-1,345.3	971.1	1,659.2	0.00	0.00	
5,000.0	24.32	144.81	4,646.0	-1,379.0	994.8	1,700.3	0.00	0.00	
5,100.0	24.32	144.81	4,737.2	-1,412.6	1,018.5	1,741.5	0.00	0.00	
5,200.0	24.32	144.81	4,828.3	-1,446.3	1,042.3	1,782.7	0.00	0.00	
5,300.0	24.32	144.81	4,919.4	-1,479.9	1,066.0	1,823.9	0.00	0.00	
5,400.0	24.32	144.81	5,010.6	-1,513.6	1,089.7	1,865.1	0.00	0.00	
5,500.0	24.32	144.81	5,101.7	-1,547.2	1,113.4	1,906.2	0.00	0.00	
5,600.0	24.32	144.81	5,192.8	-1,580.9	1,137.2	1,947.4	0.00	0.00	
5,700.0	24.32	144.81	5,283.9	-1,614.6	1,160.9	1,988.6	0.00	0.00	
5,800.0	24.32	144.81	5,375.1	-1,648.2	1,184.6	2,029.8	0.00	0.00	
5,900.0	24.32	144.81	5,466.2	-1,681.9	1,208.4	2,070.9	0.00	0.00	
6,000.0	24.32	144.81	5,557.3	-1,715.5	1,232.1	2,112.1	0.00	0.00	
6,100.0	24.32	144.81	5,648.4	-1,749.2	1,255.8	2,153.3	0.00	0.00	
6,200.0	24.32	144.81	5,739.6	-1,782.8	1,279.6	2,194.5	0.00	0.00	
6,300.0	24.32	144.81	5,830.7	-1,816.5	1,303.3	2,235.7	0.00	0.00	
6,400.0	24.32	144.81	5,921.8	-1,850.1	1,327.0	2,276.8	0.00	0.00	
6,440.0	24.32	144.81	5,958.3	-1,863.6	1,336.5	2,293.3	0.00	0.00	Start Drop -3.00
6,500.0	22.52	144.81	6,013.3	-1,883.1	1,350.3	2,317.1	3.00	-3.00	
6,600.0	19.52	144.81	6,106.7	-1,912.4	1,370.9	2,353.0	3.00	-3.00	
6,700.0	16.52	144.81	6,201.8	-1,937.7	1,388.7	2,383.9	3.00	-3.00	
6,800.0	13.52	144.81	6,298.3	-1,958.8	1,403.7	2,409.8	3.00	-3.00	
6,900.0	10.52	144.81	6,396.1	-1,975.8	1,415.7	2,430.7	3.00	-3.00	
7,000.0	7.52	144.81	6,494.9	-1,988.6	1,424.7	2,446.3	3.00	-3.00	
7,100.0	4.52	144.81	6,594.3	-1,997.2	1,430.7	2,456.8	3.00	-3.00	
7,200.0	1.52	144.81	6,694.2	-2,001.5	1,433.8	2,462.1	3.00	-3.00	
7,250.6	0.00	0.00	6,744.7	-2,002.1	1,434.2	2,462.7	3.00	-3.00	Start 3231.3 hold at 7250.6 MD
7,300.0	0.00	0.00	6,794.2	-2,002.1	1,434.2	2,462.7	0.00	0.00	
7,337.8	0.00	0.00	6,832.0	-2,002.1	1,434.2	2,462.7	0.00	0.00	OHIO_CREEK
7,400.0	0.00	0.00	6,894.2	-2,002.1	1,434.2	2,462.7	0.00	0.00	
7,500.0	0.00	0.00	6,994.2	-2,002.1	1,434.2	2,462.7	0.00	0.00	
7,600.0	0.00	0.00	7,094.2	-2,002.1	1,434.2	2,462.7	0.00	0.00	
7,700.0	0.00	0.00	7,194.2	-2,002.1	1,434.2	2,462.7	0.00	0.00	
7,797.8	0.00	0.00	7,292.0	-2,002.1	1,434.2	2,462.7	0.00	0.00	WILLIAMS_FORK
7,800.0	0.00	0.00	7,294.2	-2,002.1	1,434.2	2,462.7	0.00	0.00	
7,900.0	0.00	0.00	7,394.2	-2,002.1	1,434.2	2,462.7	0.00	0.00	
8,000.0	0.00	0.00	7,494.2	-2,002.1	1,434.2	2,462.7	0.00	0.00	
8,100.0	0.00	0.00	7,594.2	-2,002.1	1,434.2	2,462.7	0.00	0.00	
8,200.0	0.00	0.00	7,694.2	-2,002.1	1,434.2	2,462.7	0.00	0.00	
8,300.0	0.00	0.00	7,794.2	-2,002.1	1,434.2	2,462.7	0.00	0.00	
8,400.0	0.00	0.00	7,894.2	-2,002.1	1,434.2	2,462.7	0.00	0.00	
8,469.8	0.00	0.00	7,964.0	-2,002.1	1,434.2	2,462.7	0.00	0.00	TOP_GAS
8,500.0	0.00	0.00	7,994.2	-2,002.1	1,434.2	2,462.7	0.00	0.00	
8,600.0	0.00	0.00	8,094.2	-2,002.1	1,434.2	2,462.7	0.00	0.00	
8,700.0	0.00	0.00	8,194.2	-2,002.1	1,434.2	2,462.7	0.00	0.00	
8,800.0	0.00	0.00	8,294.2	-2,002.1	1,434.2	2,462.7	0.00	0.00	
8,900.0	0.00	0.00	8,394.2	-2,002.1	1,434.2	2,462.7	0.00	0.00	
9,000.0	0.00	0.00	8,494.2	-2,002.1	1,434.2	2,462.7	0.00	0.00	
9,100.0	0.00	0.00	8,594.2	-2,002.1	1,434.2	2,462.7	0.00	0.00	
9,200.0	0.00	0.00	8,694.2	-2,002.1	1,434.2	2,462.7	0.00	0.00	
9,300.0	0.00	0.00	8,794.2	-2,002.1	1,434.2	2,462.7	0.00	0.00	
9,400.0	0.00	0.00	8,894.2	-2,002.1	1,434.2	2,462.7	0.00	0.00	
9,500.0	0.00	0.00	8,994.2	-2,002.1	1,434.2	2,462.7	0.00	0.00	

Planning Report

Database:	USA EDM 5000 Multi Users DB	Local Co-ordinate Reference:	Well 43C-36-795
Company:	Caerus Oil & Gas	TVD Reference:	KB @ 8902.0usft
Project:	Garfield County, CO (UTM 12N)	MD Reference:	KB @ 8902.0usft
Site:	S36-T7S-R95W (36G)	North Reference:	True
Well:	43C-36-795	Survey Calculation Method:	Minimum Curvature
Wellbore:	OH		
Design:	PLAN #1		

Planned Survey									
Measured Depth (usft)	Inclination (°)	Azimuth (°)	Vertical Depth (usft)	+N/-S (usft)	+E/-W (usft)	Vertical Section (usft)	Dogleg Rate (°/100usft)	Build Rate (°/100u)	Comments / Formations
9,600.0	0.00	0.00	9,094.2	-2,002.1	1,434.2	2,462.7	0.00	0.00	
9,700.0	0.00	0.00	9,194.2	-2,002.1	1,434.2	2,462.7	0.00	0.00	
9,800.0	0.00	0.00	9,294.2	-2,002.1	1,434.2	2,462.7	0.00	0.00	
9,900.0	0.00	0.00	9,394.2	-2,002.1	1,434.2	2,462.7	0.00	0.00	
10,000.0	0.00	0.00	9,494.2	-2,002.1	1,434.2	2,462.7	0.00	0.00	
10,076.8	0.00	0.00	9,571.0	-2,002.1	1,434.2	2,462.7	0.00	0.00	CAMEO
10,100.0	0.00	0.00	9,594.2	-2,002.1	1,434.2	2,462.7	0.00	0.00	
10,200.0	0.00	0.00	9,694.2	-2,002.1	1,434.2	2,462.7	0.00	0.00	
10,300.0	0.00	0.00	9,794.2	-2,002.1	1,434.2	2,462.7	0.00	0.00	
10,331.8	0.00	0.00	9,826.0	-2,002.1	1,434.2	2,462.7	0.00	0.00	ROLLINS
10,400.0	0.00	0.00	9,894.2	-2,002.1	1,434.2	2,462.7	0.00	0.00	
10,481.8	0.00	0.00	9,976.0	-2,002.1	1,434.2	2,462.7	0.00	0.00	TD at 10481.8 - TD

Targets											
Target Name	- hit/miss target	- Shape	Dip Angle (°)	Dip Dir. (°)	TVD (usft)	+N/-S (usft)	+E/-W (usft)	Northing (usft)	Easting (usft)	Latitude	Longitude
43C-36-795 PBHL			0.00	0.00	9,976.0	-2,002.1	1,434.2	14,318,658.50	2,506,047.70	39.390083	-107.936474
	- plan hits target center										
	- Circle (radius 50.0)										

Formations						
Measured Depth (usft)	Vertical Depth (usft)	Name	Lithology	Dip (°)	Dip Direction (°)	
7,337.8	6,832.0	OHIO_CREEK				
7,797.8	7,292.0	WILLIAMS_FORK				
8,469.8	7,964.0	TOP_GAS				
10,076.8	9,571.0	CAMEO				
10,331.8	9,826.0	ROLLINS				
10,481.8	9,976.0	TD				

Plan Annotations					
Measured Depth (usft)	Vertical Depth (usft)	+N/-S (usft)	+E/-W (usft)	Comment	
450.0	450.0	0.0	0.0	Start Build 3.00	
616.7	616.5	-3.1	6.6	Start DLS 3.00 TFO 36.51	
1,287.4	1,262.9	-129.6	113.8	Start 5152.6 hold at 1287.4 MD	
6,440.0	5,958.3	-1,863.6	1,336.5	Start Drop -3.00	
7,250.6	6,744.7	-2,002.1	1,434.2	Start 3231.3 hold at 7250.6 MD	
10,481.8	9,976.0	-2,002.1	1,434.2	TD at 10481.8	