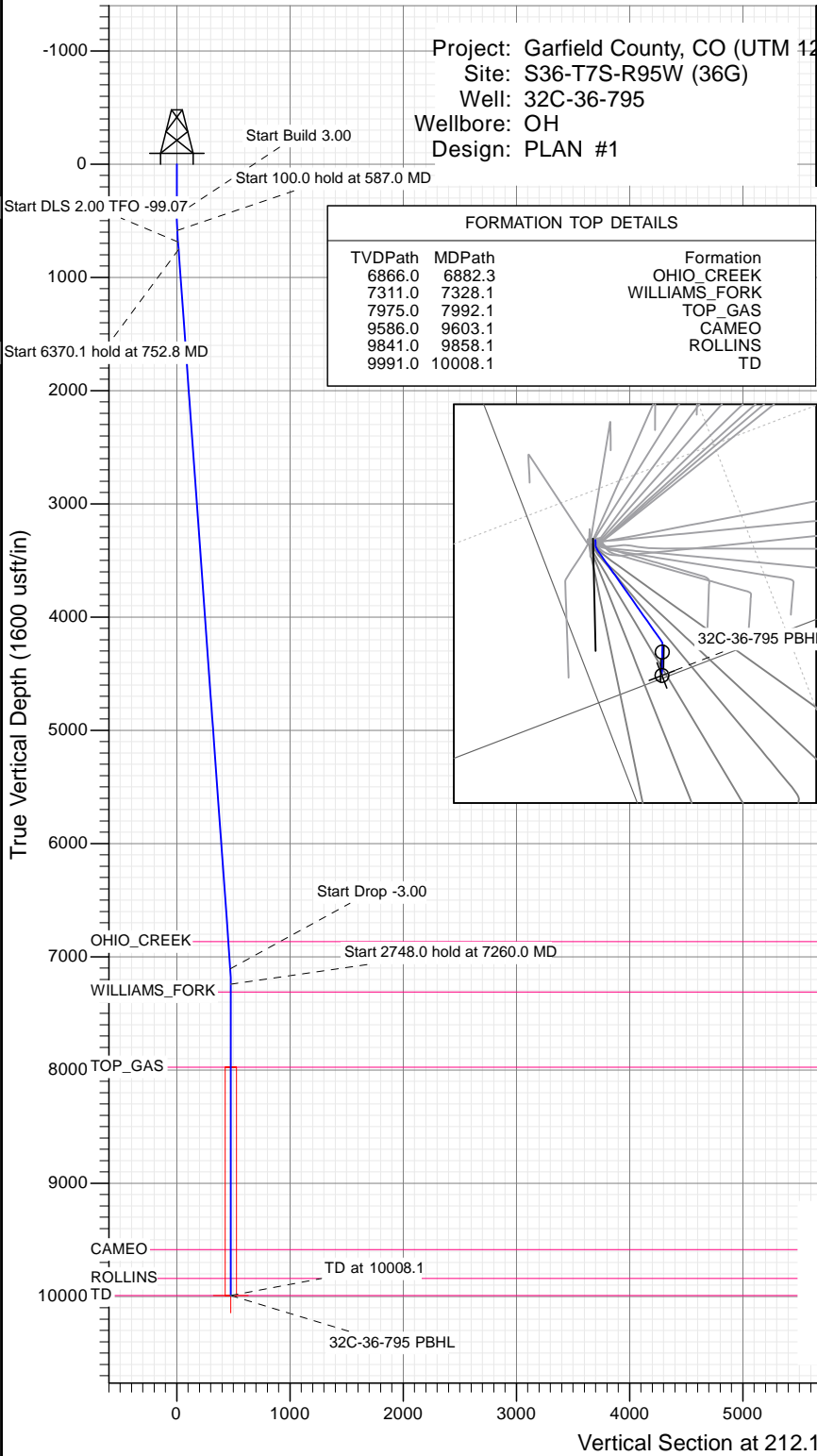




SECTION DETAILS

Sec	MD	Inc	Azi	TVD	+N/-S	+E/-W	Dleg	TFace	VSect	Target
1	0.0	0.00	0.00	0.0	0.0	0.0	0.00	0.00	0.0	
2	450.0	0.00	0.00	450.0	0.0	0.0	0.00	0.00	0.0	
3	587.0	4.11	230.00	586.9	-3.2	-3.8	3.00	230.00	4.7	
4	687.0	4.11	230.00	686.6	-7.8	-9.3	0.00	0.00	11.5	
5	752.8	4.11	211.57	752.2	-11.3	-12.3	2.00	-99.07	16.1	
6	7122.9	4.11	211.57	7106.0	-400.5	-251.5	0.00	0.00	472.9	
7	7260.0	0.00	0.00	7243.0	-404.7	-254.1	3.00	180.00	477.9	
8	10008.1	0.00	0.00	9991.0	-404.7	-254.1	0.00	0.00	477.9	32C-36-795 PBHL

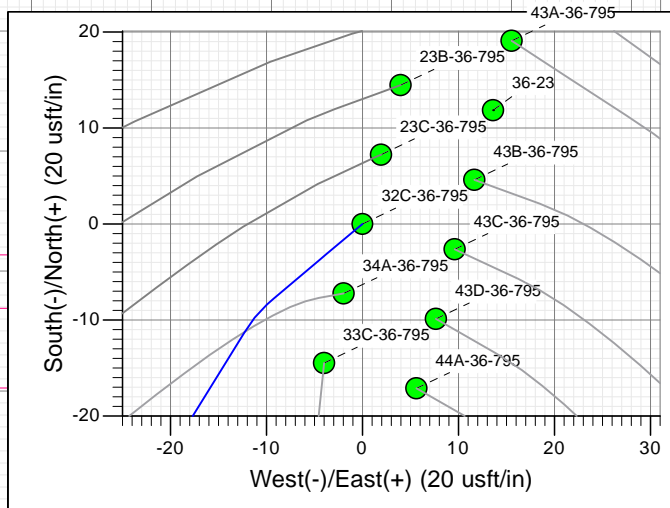
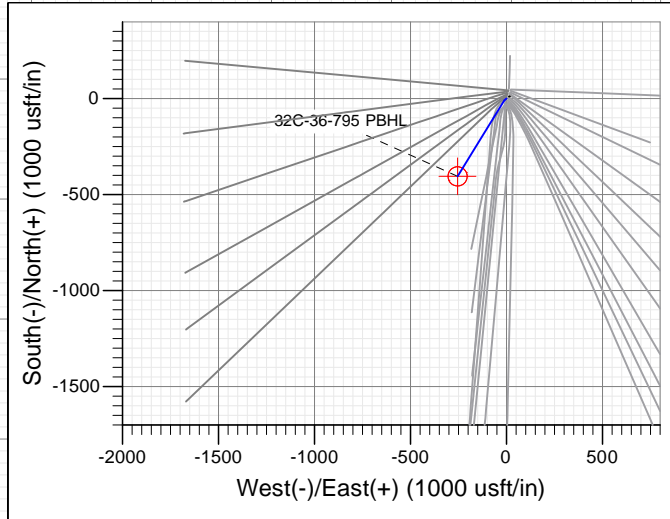


FORMATION TOP DETAILS

TVDPath	MDPath	Formation
6866.0	6882.3	OHIO_CREEK
7311.0	7328.1	WILLIAMS_FORK
7975.0	7992.1	TOP_GAS
9586.0	9603.1	CAMEO
9841.0	9858.1	ROLLINS
9991.0	10008.1	TD

PLAN #1
32C-36-795
15XXX LR
KB @ 8902.0usft
Ground Level @ 8872.0
NAD 1927 - Western US
Well 32C-36-795, True North

Name	Type	Target	No Target (Freehand)	Azimuth	Origin Type	N/S	E/W	From TVD	Latitude	Longitude
32C-36-795 PBHL	TD			212.12	Slot	0.0	0.0	0.0	39.394474	-107.942478



Azimuths to True North
Magnetic North: 9.40°
Magnetic Field
Strength: 51872.9snT
Dip Angle: 65.60°
Date: 12/28/2015
Model: HDGM

CASING DETAILS

No casing data is available



WELL DETAILS: 32C-36-795

+N/-S	+E/-W	Northing	Ground Level:	8872.0	Latitude	Longitude
0.0	0.0	14320613.10	Easting	2504536.80	39.395585	-107.941580



Planning Report

Database: USA EDM 5000 Multi Users DB	Local Co-ordinate Reference: Well 32C-36-795
Company: Caerus Oil & Gas	TVD Reference: KB @ 8902.0usft
Project: Garfield County, CO (UTM 12N)	MD Reference: KB @ 8902.0usft
Site: S36-T7S-R95W (36G)	North Reference: True
Well: 32C-36-795	Survey Calculation Method: Minimum Curvature
Wellbore: OH	
Design: PLAN #1	

Project Garfield County, CO (UTM 12N)	
Map System: Universal Transverse Mercator (US Survey Feet)	System Datum: Mean Sea Level
Geo Datum: NAD 1927 - Western US	
Map Zone: Zone 12N (114 W to 108 W)	

Site S36-T7S-R95W (36G)		
Site Position:	Northing: 14,320,581.60 usft	Latitude: 39.395498
From: Map	Easting: 2,504,539.60 usft	Longitude: -107.941574
Position Uncertainty: 0.0 usft	Slot Radius: 13-3/16"	Grid Convergence: 1.94 °

Well 32C-36-795			
Well Position	+N/-S 0.0 usft	Northing: 14,320,613.10 usft	Latitude: 39.395585
	+E/-W 0.0 usft	Easting: 2,504,536.80 usft	Longitude: -107.941580
Position Uncertainty	0.0 usft	Wellhead Elevation: 0.0 usft	Ground Level: 8,872.0 usft

Wellbore OH					
Magnetics	Model Name	Sample Date	Declination	Dip Angle	Field Strength
	HDGM	12/28/2015	(°) 9.40	(°) 65.60	(nT) 51,873

Design PLAN #1				
Audit Notes:				
Version:	Phase: PLAN	Tie On Depth: 0.0		
Vertical Section:	Depth From (TVD)	+N/-S	+E/-W	Direction
	(usft)	(usft)	(usft)	(°)
	0.0	0.0	0.0	212.12

Plan Sections										
Measured Depth (usft)	Inclination (°)	Azimuth (°)	Vertical Depth (usft)	+N/-S (usft)	+E/-W (usft)	Dogleg Rate (°/100usft)	Build Rate (°/100usft)	Turn Rate (°/100usft)	TFO (°)	Target
0.0	0.00	0.00	0.0	0.0	0.0	0.00	0.00	0.00	0.00	
450.0	0.00	0.00	450.0	0.0	0.0	0.00	0.00	0.00	0.00	
587.0	4.11	230.00	586.9	-3.2	-3.8	3.00	3.00	0.00	230.00	
687.0	4.11	230.00	686.6	-7.8	-9.3	0.00	0.00	0.00	0.00	
752.8	4.11	211.57	752.2	-11.3	-12.3	2.00	0.00	-28.02	-99.07	
7,122.9	4.11	211.57	7,106.0	-400.5	-251.5	0.00	0.00	0.00	0.00	
7,260.0	0.00	0.00	7,243.0	-404.7	-254.1	3.00	-3.00	0.00	180.00	
10,008.1	0.00	0.00	9,991.0	-404.7	-254.1	0.00	0.00	0.00	0.00	32C-36-795 PBHL

Planning Report

Database:	USA EDM 5000 Multi Users DB	Local Co-ordinate Reference:	Well 32C-36-795
Company:	Caerus Oil & Gas	TVD Reference:	KB @ 8902.0usft
Project:	Garfield County, CO (UTM 12N)	MD Reference:	KB @ 8902.0usft
Site:	S36-T7S-R95W (36G)	North Reference:	True
Well:	32C-36-795	Survey Calculation Method:	Minimum Curvature
Wellbore:	OH		
Design:	PLAN #1		

Planned Survey									
Measured Depth (usft)	Inclination (°)	Azimuth (°)	Vertical Depth (usft)	+N/-S (usft)	+E/-W (usft)	Vertical Section (usft)	Dogleg Rate (°/100usft)	Build Rate (°/100u)	Comments / Formations
0.0	0.00	0.00	0.0	0.0	0.0	0.0	0.00	0.00	
100.0	0.00	0.00	100.0	0.0	0.0	0.0	0.00	0.00	
200.0	0.00	0.00	200.0	0.0	0.0	0.0	0.00	0.00	
300.0	0.00	0.00	300.0	0.0	0.0	0.0	0.00	0.00	
400.0	0.00	0.00	400.0	0.0	0.0	0.0	0.00	0.00	
450.0	0.00	0.00	450.0	0.0	0.0	0.0	0.00	0.00	Start Build 3.00
500.0	1.50	230.00	500.0	-0.4	-0.5	0.6	3.00	3.00	
587.0	4.11	230.00	586.9	-3.2	-3.8	4.7	3.00	3.00	Start 100.0 hold at 587.0 MD
600.0	4.11	230.00	599.8	-3.8	-4.5	5.6	0.00	0.00	
687.0	4.11	230.00	686.6	-7.8	-9.3	11.5	0.00	0.00	Start DLS 2.00 TFO -99.07
700.0	4.08	226.39	699.6	-8.4	-9.9	12.4	2.00	-0.25	
752.8	4.11	211.57	752.2	-11.3	-12.3	16.1	2.00	0.07	Start 6370.1 hold at 752.8 MD
800.0	4.11	211.57	799.3	-14.2	-14.1	19.5	0.00	0.00	
900.0	4.11	211.57	899.1	-20.3	-17.8	26.7	0.00	0.00	
1,000.0	4.11	211.57	998.8	-26.4	-21.6	33.8	0.00	0.00	
1,100.0	4.11	211.57	1,098.6	-32.5	-25.3	41.0	0.00	0.00	
1,200.0	4.11	211.57	1,198.3	-38.6	-29.1	48.2	0.00	0.00	
1,300.0	4.11	211.57	1,298.0	-44.7	-32.8	55.3	0.00	0.00	
1,400.0	4.11	211.57	1,397.8	-50.8	-36.6	62.5	0.00	0.00	
1,500.0	4.11	211.57	1,497.5	-56.9	-40.4	69.7	0.00	0.00	
1,600.0	4.11	211.57	1,597.3	-63.1	-44.1	76.9	0.00	0.00	
1,700.0	4.11	211.57	1,697.0	-69.2	-47.9	84.0	0.00	0.00	
1,800.0	4.11	211.57	1,796.8	-75.3	-51.6	91.2	0.00	0.00	
1,900.0	4.11	211.57	1,896.5	-81.4	-55.4	98.4	0.00	0.00	
2,000.0	4.11	211.57	1,996.2	-87.5	-59.1	105.5	0.00	0.00	
2,100.0	4.11	211.57	2,096.0	-93.6	-62.9	112.7	0.00	0.00	
2,200.0	4.11	211.57	2,195.7	-99.7	-66.6	119.9	0.00	0.00	
2,300.0	4.11	211.57	2,295.5	-105.8	-70.4	127.1	0.00	0.00	
2,400.0	4.11	211.57	2,395.2	-111.9	-74.1	134.2	0.00	0.00	
2,500.0	4.11	211.57	2,495.0	-118.1	-77.9	141.4	0.00	0.00	
2,600.0	4.11	211.57	2,594.7	-124.2	-81.7	148.6	0.00	0.00	
2,700.0	4.11	211.57	2,694.4	-130.3	-85.4	155.7	0.00	0.00	
2,800.0	4.11	211.57	2,794.2	-136.4	-89.2	162.9	0.00	0.00	
2,900.0	4.11	211.57	2,893.9	-142.5	-92.9	170.1	0.00	0.00	
3,000.0	4.11	211.57	2,993.7	-148.6	-96.7	177.3	0.00	0.00	
3,100.0	4.11	211.57	3,093.4	-154.7	-100.4	184.4	0.00	0.00	
3,200.0	4.11	211.57	3,193.2	-160.8	-104.2	191.6	0.00	0.00	
3,300.0	4.11	211.57	3,292.9	-166.9	-107.9	198.8	0.00	0.00	
3,400.0	4.11	211.57	3,392.6	-173.0	-111.7	205.9	0.00	0.00	
3,500.0	4.11	211.57	3,492.4	-179.2	-115.5	213.1	0.00	0.00	
3,600.0	4.11	211.57	3,592.1	-185.3	-119.2	220.3	0.00	0.00	
3,700.0	4.11	211.57	3,691.9	-191.4	-123.0	227.5	0.00	0.00	
3,800.0	4.11	211.57	3,791.6	-197.5	-126.7	234.6	0.00	0.00	
3,900.0	4.11	211.57	3,891.4	-203.6	-130.5	241.8	0.00	0.00	
4,000.0	4.11	211.57	3,991.1	-209.7	-134.2	249.0	0.00	0.00	
4,100.0	4.11	211.57	4,090.8	-215.8	-138.0	256.1	0.00	0.00	
4,200.0	4.11	211.57	4,190.6	-221.9	-141.7	263.3	0.00	0.00	
4,300.0	4.11	211.57	4,290.3	-228.0	-145.5	270.5	0.00	0.00	
4,400.0	4.11	211.57	4,390.1	-234.1	-149.2	277.7	0.00	0.00	
4,500.0	4.11	211.57	4,489.8	-240.3	-153.0	284.8	0.00	0.00	
4,600.0	4.11	211.57	4,589.6	-246.4	-156.8	292.0	0.00	0.00	
4,700.0	4.11	211.57	4,689.3	-252.5	-160.5	299.2	0.00	0.00	

Planning Report

Database:	USA EDM 5000 Multi Users DB	Local Co-ordinate Reference:	Well 32C-36-795
Company:	Caerus Oil & Gas	TVD Reference:	KB @ 8902.0usft
Project:	Garfield County, CO (UTM 12N)	MD Reference:	KB @ 8902.0usft
Site:	S36-T7S-R95W (36G)	North Reference:	True
Well:	32C-36-795	Survey Calculation Method:	Minimum Curvature
Wellbore:	OH		
Design:	PLAN #1		

Planned Survey									
Measured Depth (usft)	Inclination (°)	Azimuth (°)	Vertical Depth (usft)	+N/-S (usft)	+E/-W (usft)	Vertical Section (usft)	Dogleg Rate (°/100usft)	Build Rate (°/100u)	Comments / Formations
4,800.0	4.11	211.57	4,789.0	-258.6	-164.3	306.3	0.00	0.00	
4,900.0	4.11	211.57	4,888.8	-264.7	-168.0	313.5	0.00	0.00	
5,000.0	4.11	211.57	4,988.5	-270.8	-171.8	320.7	0.00	0.00	
5,100.0	4.11	211.57	5,088.3	-276.9	-175.5	327.9	0.00	0.00	
5,200.0	4.11	211.57	5,188.0	-283.0	-179.3	335.0	0.00	0.00	
5,300.0	4.11	211.57	5,287.7	-289.1	-183.0	342.2	0.00	0.00	
5,400.0	4.11	211.57	5,387.5	-295.3	-186.8	349.4	0.00	0.00	
5,500.0	4.11	211.57	5,487.2	-301.4	-190.5	356.5	0.00	0.00	
5,600.0	4.11	211.57	5,587.0	-307.5	-194.3	363.7	0.00	0.00	
5,700.0	4.11	211.57	5,686.7	-313.6	-198.1	370.9	0.00	0.00	
5,800.0	4.11	211.57	5,786.5	-319.7	-201.8	378.1	0.00	0.00	
5,900.0	4.11	211.57	5,886.2	-325.8	-205.6	385.2	0.00	0.00	
6,000.0	4.11	211.57	5,985.9	-331.9	-209.3	392.4	0.00	0.00	
6,100.0	4.11	211.57	6,085.7	-338.0	-213.1	399.6	0.00	0.00	
6,200.0	4.11	211.57	6,185.4	-344.1	-216.8	406.8	0.00	0.00	
6,300.0	4.11	211.57	6,285.2	-350.2	-220.6	413.9	0.00	0.00	
6,400.0	4.11	211.57	6,384.9	-356.4	-224.3	421.1	0.00	0.00	
6,500.0	4.11	211.57	6,484.7	-362.5	-228.1	428.3	0.00	0.00	
6,600.0	4.11	211.57	6,584.4	-368.6	-231.9	435.4	0.00	0.00	
6,700.0	4.11	211.57	6,684.1	-374.7	-235.6	442.6	0.00	0.00	
6,800.0	4.11	211.57	6,783.9	-380.8	-239.4	449.8	0.00	0.00	
6,882.3	4.11	211.57	6,866.0	-385.8	-242.5	455.7	0.00	0.00	OHIO_CREEK
6,900.0	4.11	211.57	6,883.6	-386.9	-243.1	457.0	0.00	0.00	
7,000.0	4.11	211.57	6,983.4	-393.0	-246.9	464.1	0.00	0.00	
7,100.0	4.11	211.57	7,083.1	-399.1	-250.6	471.3	0.00	0.00	
7,122.9	4.11	211.57	7,106.0	-400.5	-251.5	472.9	0.00	0.00	Start Drop -3.00
7,200.0	1.80	211.57	7,182.9	-403.9	-253.6	476.9	3.00	-3.00	
7,260.0	0.00	0.00	7,243.0	-404.7	-254.1	477.9	3.00	-3.00	Start 2748.0 hold at 7260.0 MD
7,300.0	0.00	0.00	7,282.9	-404.7	-254.1	477.9	0.00	0.00	
7,328.1	0.00	0.00	7,311.0	-404.7	-254.1	477.9	0.00	0.00	WILLIAMS_FORK
7,400.0	0.00	0.00	7,382.9	-404.7	-254.1	477.9	0.00	0.00	
7,500.0	0.00	0.00	7,482.9	-404.7	-254.1	477.9	0.00	0.00	
7,600.0	0.00	0.00	7,582.9	-404.7	-254.1	477.9	0.00	0.00	
7,700.0	0.00	0.00	7,682.9	-404.7	-254.1	477.9	0.00	0.00	
7,800.0	0.00	0.00	7,782.9	-404.7	-254.1	477.9	0.00	0.00	
7,900.0	0.00	0.00	7,882.9	-404.7	-254.1	477.9	0.00	0.00	
7,992.1	0.00	0.00	7,975.0	-404.7	-254.1	477.9	0.00	0.00	TOP_GAS
8,000.0	0.00	0.00	7,982.9	-404.7	-254.1	477.9	0.00	0.00	
8,100.0	0.00	0.00	8,082.9	-404.7	-254.1	477.9	0.00	0.00	
8,200.0	0.00	0.00	8,182.9	-404.7	-254.1	477.9	0.00	0.00	
8,300.0	0.00	0.00	8,282.9	-404.7	-254.1	477.9	0.00	0.00	
8,400.0	0.00	0.00	8,382.9	-404.7	-254.1	477.9	0.00	0.00	
8,500.0	0.00	0.00	8,482.9	-404.7	-254.1	477.9	0.00	0.00	
8,600.0	0.00	0.00	8,582.9	-404.7	-254.1	477.9	0.00	0.00	
8,700.0	0.00	0.00	8,682.9	-404.7	-254.1	477.9	0.00	0.00	
8,800.0	0.00	0.00	8,782.9	-404.7	-254.1	477.9	0.00	0.00	
8,900.0	0.00	0.00	8,882.9	-404.7	-254.1	477.9	0.00	0.00	
9,000.0	0.00	0.00	8,982.9	-404.7	-254.1	477.9	0.00	0.00	
9,100.0	0.00	0.00	9,082.9	-404.7	-254.1	477.9	0.00	0.00	
9,200.0	0.00	0.00	9,182.9	-404.7	-254.1	477.9	0.00	0.00	
9,300.0	0.00	0.00	9,282.9	-404.7	-254.1	477.9	0.00	0.00	
9,400.0	0.00	0.00	9,382.9	-404.7	-254.1	477.9	0.00	0.00	

Planning Report

Database:	USA EDM 5000 Multi Users DB	Local Co-ordinate Reference:	Well 32C-36-795
Company:	Caerus Oil & Gas	TVD Reference:	KB @ 8902.0usft
Project:	Garfield County, CO (UTM 12N)	MD Reference:	KB @ 8902.0usft
Site:	S36-T7S-R95W (36G)	North Reference:	True
Well:	32C-36-795	Survey Calculation Method:	Minimum Curvature
Wellbore:	OH		
Design:	PLAN #1		

Planned Survey									
Measured Depth (usft)	Inclination (°)	Azimuth (°)	Vertical Depth (usft)	+N/-S (usft)	+E/-W (usft)	Vertical Section (usft)	Dogleg Rate (°/100usft)	Build Rate (°/100u)	Comments / Formations
9,500.0	0.00	0.00	9,482.9	-404.7	-254.1	477.9	0.00	0.00	
9,600.0	0.00	0.00	9,582.9	-404.7	-254.1	477.9	0.00	0.00	
9,603.1	0.00	0.00	9,586.0	-404.7	-254.1	477.9	0.00	0.00	CAMEO
9,700.0	0.00	0.00	9,682.9	-404.7	-254.1	477.9	0.00	0.00	
9,800.0	0.00	0.00	9,782.9	-404.7	-254.1	477.9	0.00	0.00	
9,858.1	0.00	0.00	9,841.0	-404.7	-254.1	477.9	0.00	0.00	ROLLINS
9,900.0	0.00	0.00	9,882.9	-404.7	-254.1	477.9	0.00	0.00	
10,000.0	0.00	0.00	9,982.9	-404.7	-254.1	477.9	0.00	0.00	
10,008.1	0.00	0.00	9,991.0	-404.7	-254.1	477.9	0.00	0.00	TD at 10008.1 - TD

Targets											
Target Name	- hit/miss target	- Shape	Dip Angle (°)	Dip Dir. (°)	TVD (usft)	+N/-S (usft)	+E/-W (usft)	Northing (usft)	Easting (usft)	Latitude	Longitude
32C-36-795 PBHL			0.00	0.00	9,991.0	-404.7	-254.1	14,320,200.00	2,504,296.60	39.394474	-107.942478
- plan hits target center - Circle (radius 50.0)											

Formations						
Measured Depth (usft)	Vertical Depth (usft)	Name	Lithology	Dip (°)	Dip Direction (°)	
6,882.3	6,866.0	OHIO_CREEK				
7,328.1	7,311.0	WILLIAMS_FORK				
7,992.1	7,975.0	TOP_GAS				
9,603.1	9,586.0	CAMEO				
9,858.1	9,841.0	ROLLINS				
10,008.1	9,991.0	TD				

Plan Annotations					
Measured Depth (usft)	Vertical Depth (usft)	Local Coordinates		Comment	
		+N/-S (usft)	+E/-W (usft)		
450.0	450.0	0.0	0.0	Start Build 3.00	
587.0	586.9	-3.2	-3.8	Start 100.0 hold at 587.0 MD	
687.0	686.6	-7.8	-9.3	Start DLS 2.00 TFO -99.07	
752.8	752.2	-11.3	-12.3	Start 6370.1 hold at 752.8 MD	
7,122.9	7,106.0	-400.5	-251.5	Start Drop -3.00	
7,260.0	7,243.0	-404.7	-254.1	Start 2748.0 hold at 7260.0 MD	
10,008.1	9,991.0	-404.7	-254.1	TD at 10008.1	