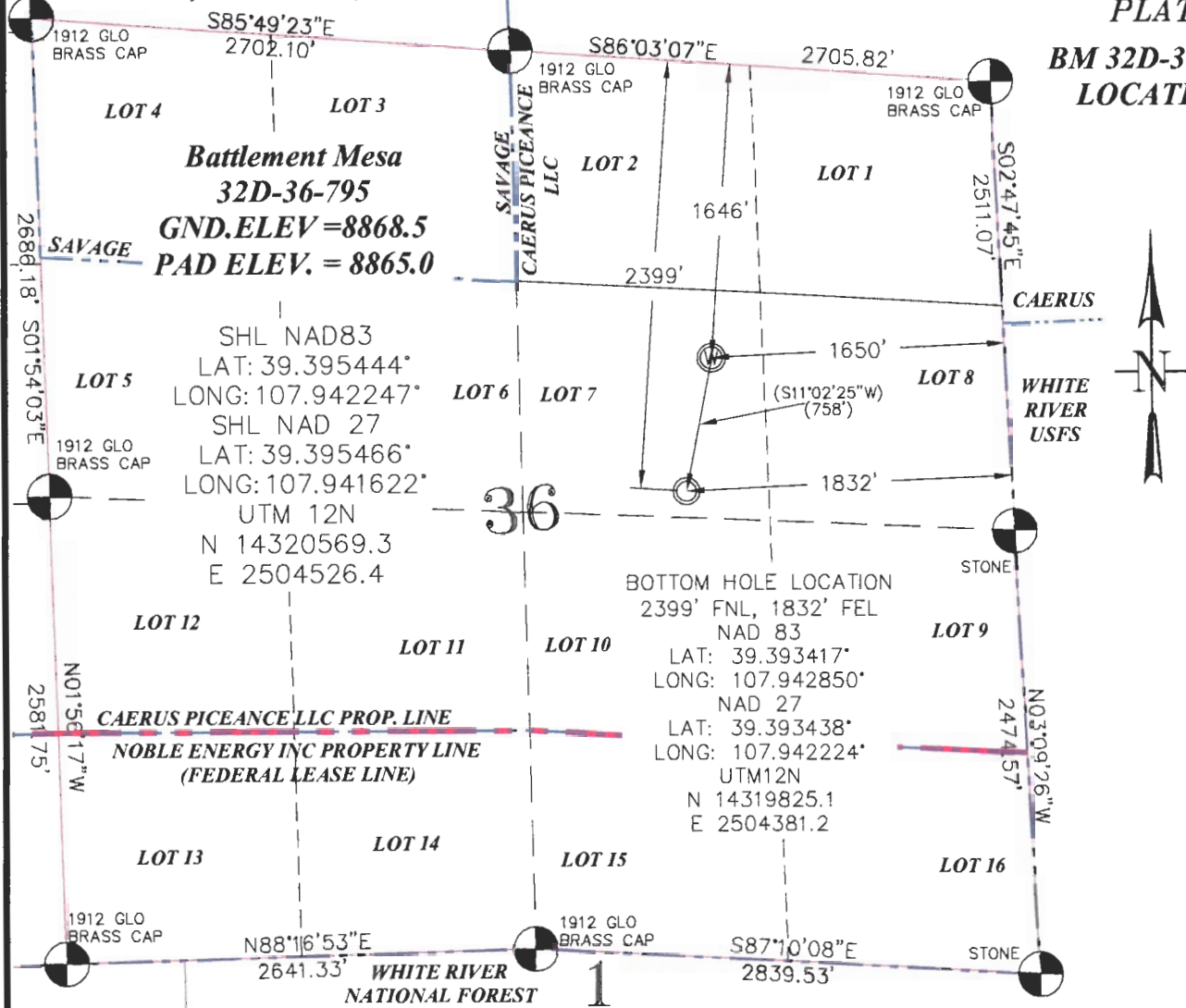


SEC. 36, T. 7 S., R. 95 W. OF THE 6TH P.M.

PLAT 1  
BM 32D-36-795  
LOCATION



THIS WELL LOCATION PLAT WAS PREPARED FOR CAERUS PICEANCE LLC TO LOCATE THE BATTLEMENT MESA #32D-36-795 WELL, 1646 FEET FROM THE NORTH LINE OF SAID SECTION AND 1650 FEET FROM THE EAST LINE OF LOT 7 (SW1/4NE1/4) OF SECTION 36, T. 7 S., R. 95 W. OF THE 6TH P.M. GARFIELD COUNTY, COLORADO.

REFERENCE NOTES

- 1) T. 7 S., R. 95 W., 6TH P.M. GLO PLAT.
- 2) U.S.G.S. QUAD: PARACHUTE, CO
- 3) ELEVATIONS BASED ON N.A.V.D. 1988 LIDAR BASED CONTROL PT CP MON 8
- 4) LATITUDES AND LONGITUDES ARE BASED ON NAD 83, COLORADO CENTRAL ZONE.
- 5) GPS OPERATOR ROBERT WOOD, OBSERVED A PPOF OF 1.9.
- 6) ALL GPS OBSERVATIONS ARE IN COMPLIANCE WITH COGCC RULE NO. 215.
- 7) SURFACE AND BOTTOM HOLE LOCATIONS ARE MEASURED 90° FROM SECTION LINES.

SURVEYOR'S CERTIFICATE

I, George R. Bauer, a Professional Land Surveyor in the State of Colorado do hereby certify that this Survey was made under my direct supervision, and that this Plat represents said Survey.



-LEGEND-

- FIELD SURVEYED SECTION CORNER LOCATIONS
- FIELD SURVEYED WELL LOCATION
- CALCULATED BOTTOM HOLE LOCATION

BM 36G-795  
PAD LOCATION

GRAPHIC SCALE IN FEET  
1 INCH = 1000 FEET



WELL LOCATION PLAT

CONSTRUCTION SURVEYS, INC.  
0012 SUNRISE BLYD. BILT, CO  
81652 (970)876-5753

SURVEY BY: REW 12/10/15	PDOP: 1.9
DRAWN BY: REW 01/28/16	DWG: CAERUS\BM36G-795PLAT_1
REVISED:	