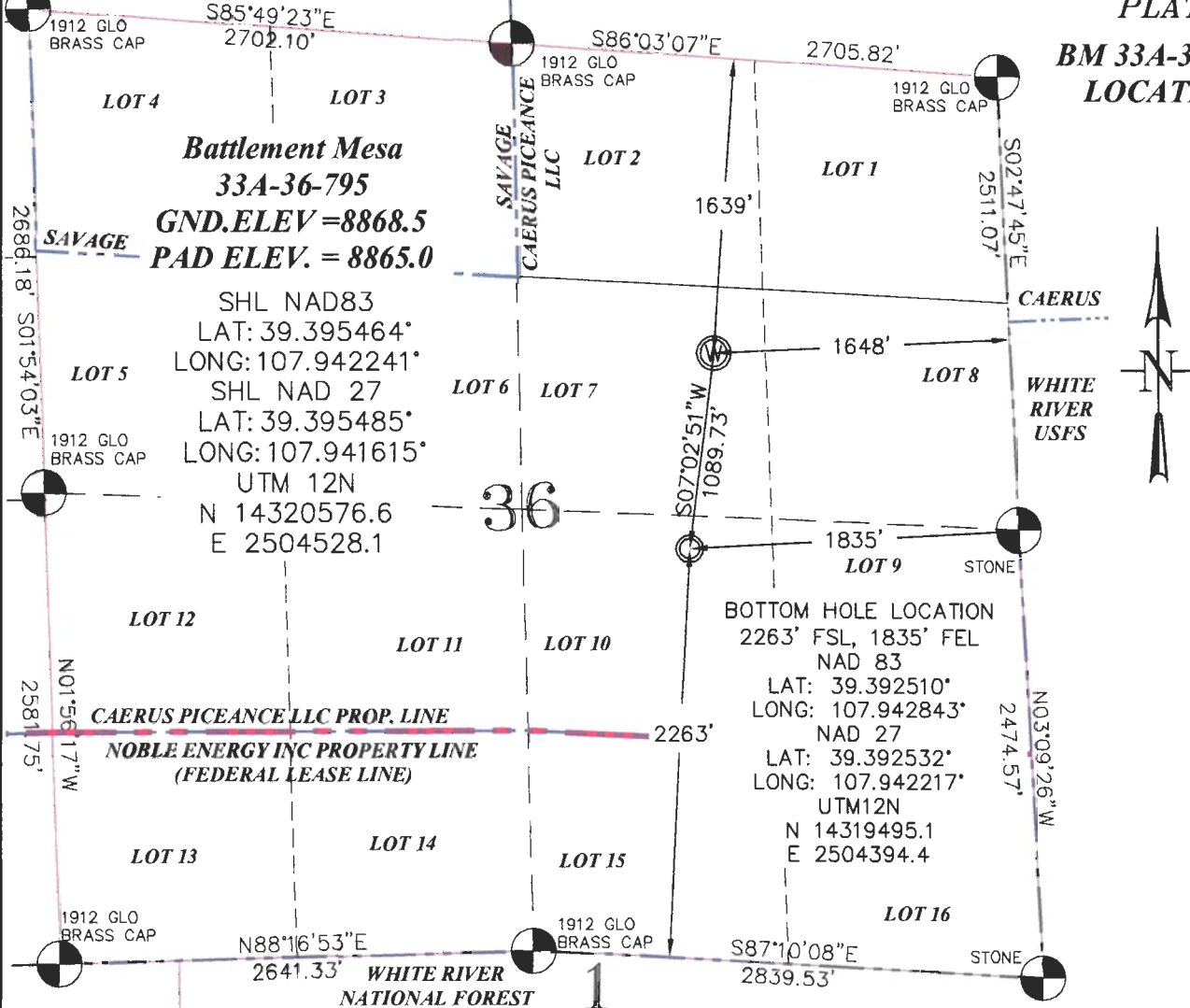


SEC. 36, T. 7 S., R. 95 W. OF THE 6TH P.M.

PLAT 1  
 BM 33A-36-795  
 LOCATION



**Battlement Mesa**  
**33A-36-795**  
**GND.ELEV = 8868.5**  
**PAD ELEV. = 8865.0**

SHL NAD83  
 LAT: 39.395464°  
 LONG: 107.942241°  
 SHL NAD 27  
 LAT: 39.395485°  
 LONG: 107.941615°  
 UTM 12N  
 N 14320576.6  
 E 2504528.1

**BOTTOM HOLE LOCATION**  
 2263' FSL, 1835' FEL  
 NAD 83  
 LAT: 39.392510°  
 LONG: 107.942843°  
 NAD 27  
 LAT: 39.392532°  
 LONG: 107.942217°  
 UTM12N  
 N 14319495.1  
 E 2504394.4

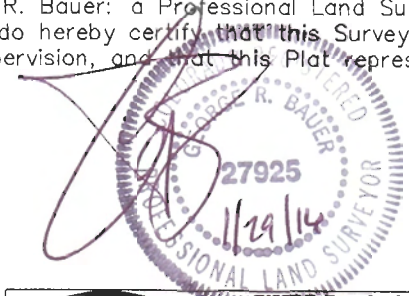
**THIS WELL LOCATION PLAT WAS PREPARED FOR CAERUS PICEANCE LLC TO LOCATE THE BATTLEMENT MESA #33A-36-795 WELL, 1639 FEET FROM THE NORTH LINE OF SAID SECTION AND 1648 FEET FROM THE EAST LINE OF LOT 7 (SW1/4NE1/4) OF SECTION 36, T. 7 S., R. 95 W. OF THE 6TH P.M. GARFIELD COUNTY, COLORADO.**

**REFERENCE NOTES**

- 1) T. 7 S., R. 95 W., 6TH P.M. GLO PLAT.
- 2) U.S.G.S. QUAD: PARACHUTE, CO
- 3) ELEVATIONS BASED ON N.A.V.D. 1988 LIDAR BASED CONTROL PT CP MON 8
- 4) LATITUDES AND LONGITUDES ARE BASED ON NAD 83, COLORADO CENTRAL ZONE.
- 5) GPS OPERATOR ROBERT WOOD, OBSERVED A PDOP OF 1.9.
- 6) ALL GPS OBSERVATIONS ARE IN COMPLIANCE WITH COGCC RULE NO. 215.
- 7) SURFACE AND BOTTOM HOLE LOCATIONS ARE MEASURED 90° FROM SECTION LINES.

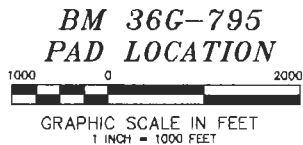
**SURVEYOR'S CERTIFICATE**

I, George R. Bauer: a Professional Land Surveyor in the State of Colorado do hereby certify that this Survey was made under my direct supervision, and that this Plat represents said Survey.



**-LEGEND-**

- FIELD SURVEYED SECTION CORNER LOCATIONS
- FIELD SURVEYED WELL LOCATION
- CALCULATED BOTTOM HOLE LOCATION



**WELL LOCATION PLAT**



**CONSTRUCTION SURVEYS, INC.**  
 2012 SUNRISE BLVD. SILT, CO  
 81652 (970)876-8753

SURVEY BY: REW 12/10/15	PDOP: 1.9
DRAWN BY: REW 01/28/16	DWG: CAERUS\BM36G-795PLAT_1
REVISED:	