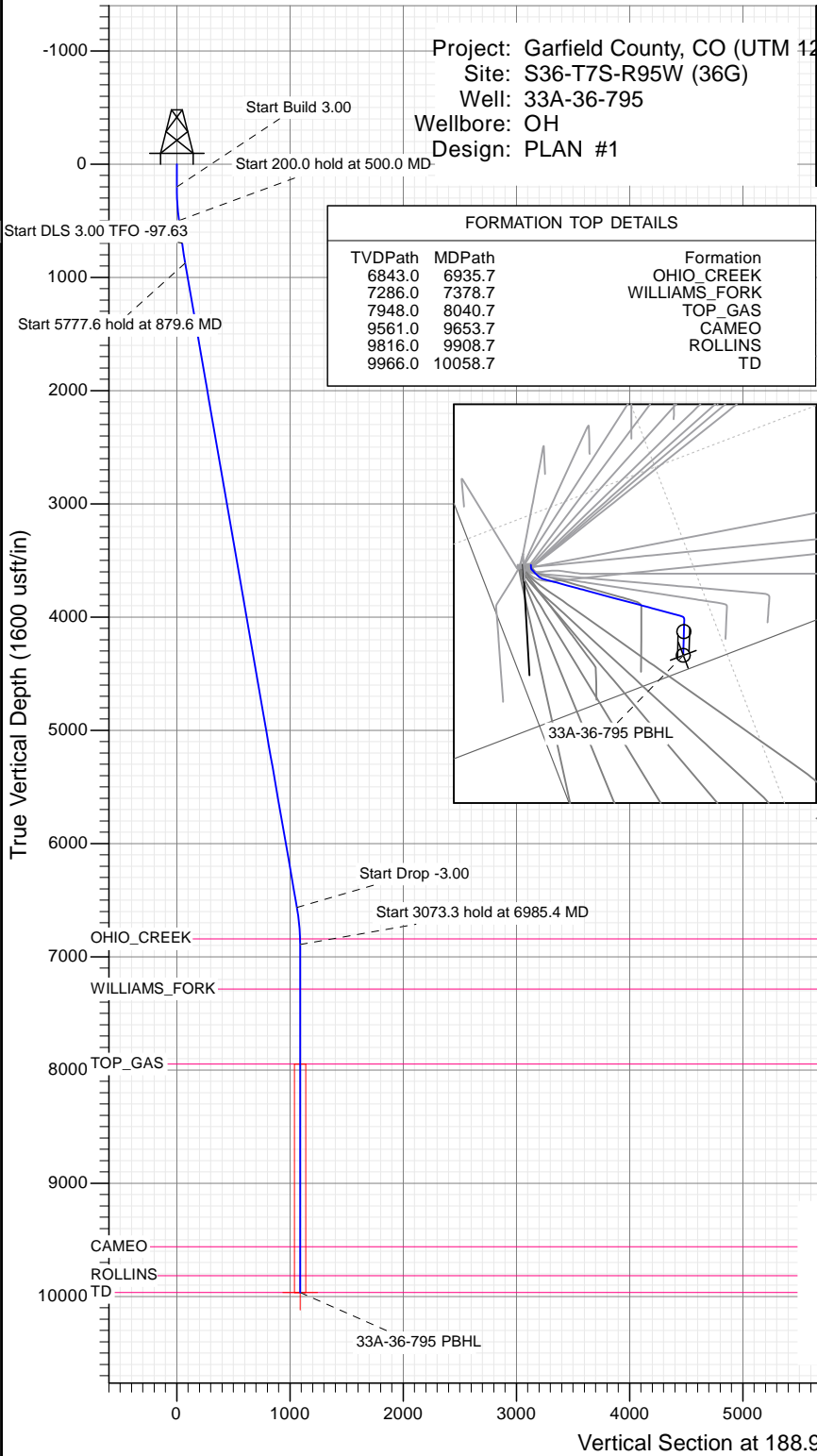




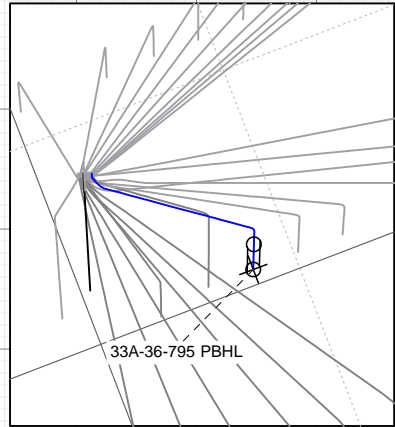
SECTION DETAILS

Sec	MD	Inc	Azi	TVD	+N/-S	+E/-W	Dleg	TFace	Vsect	Target
1	0.0	0.00	0.00	0.0	0.0	0.0	0.00	0.00	0.0	
2	200.0	0.00	0.00	200.0	0.0	0.0	0.00	0.00	0.0	
3	500.0	9.00	220.00	498.8	-18.0	-15.1	3.00	220.00	20.2	
4	700.0	9.00	220.00	696.3	-42.0	-35.2	0.00	0.00	47.0	
5	879.6	9.84	187.02	873.6	-68.0	-46.1	3.00	-97.63	74.4	
6	6657.2	9.84	187.02	6566.2	-1048.4	-166.8	0.00	0.00	1061.6	
7	6985.4	0.00	0.00	6892.7	-1076.3	-170.3	3.00	180.00	1089.7	
8	10058.7	0.00	0.00	9966.0	-1076.3	-170.3	0.00	0.00	1089.7	33A-36-795 PBHL



FORMATION TOP DETAILS

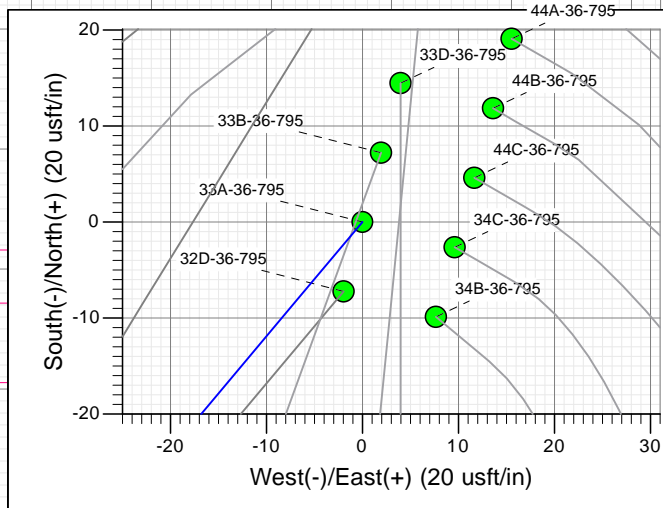
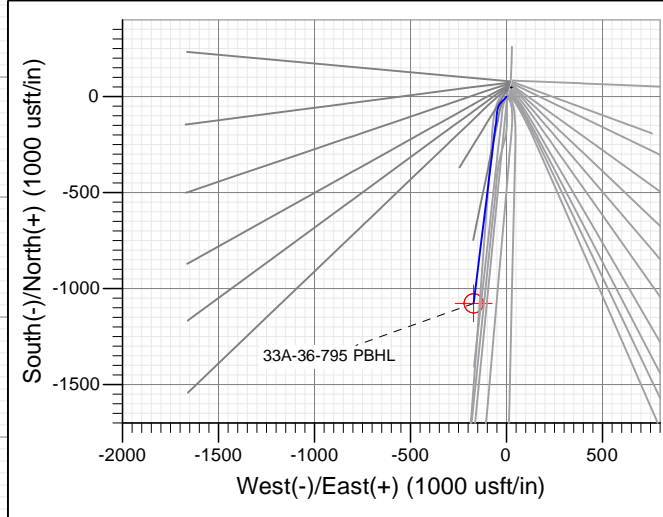
TVDPath	MDPath	Formation
6843.0	6935.7	OHIO_CREEK
7286.0	7378.7	WILLIAMS_FORK
7948.0	8040.7	TOP_GAS
9561.0	9653.7	CAMEO
9816.0	9908.7	ROLLINS
9966.0	10058.7	TD



PLAN #1
33A-36-795
15XXX LR
KB @ 892.0usft
Ground Level @ 8872.0
NAD 1927 - Western US
Well 33A-36-795, True North

Type	Target	Target (Freehand)	Azimuth	Origin Type	N/S	E/W	From TVD
TD	No Target		188.99	Slot	0.0	0.0	0.0

Name	TVD	+N/-S	+E/-W	Latitude	Longitude
33A-36-795 PBHL	9966.0	-1076.3	-170.3	39.392532	-107.942217



T M
Azimuths to True North
Magnetic North: 9.40°
Magnetic Field
Strength: 51872.6snT
Dip Angle: 65.60°
Date: 12/28/2015
Model: HDGM

CASING DETAILS
No casing data is available



WELL DETAILS: 33A-36-795

Ground Level: 8872.0
+N/-S 0.0 +E/-W 0.0 Northing 14320576.60 Easting 2504528.10 Latitude 39.395485 Longitude -107.941615



Planning Report

Database:	USA EDM 5000 Multi Users DB	Local Co-ordinate Reference:	Well 33A-36-795
Company:	Caerus Oil & Gas	TVD Reference:	KB @ 8902.0usft
Project:	Garfield County, CO (UTM 12N)	MD Reference:	KB @ 8902.0usft
Site:	S36-T7S-R95W (36G)	North Reference:	True
Well:	33A-36-795	Survey Calculation Method:	Minimum Curvature
Wellbore:	OH		
Design:	PLAN #1		

Project	Garfield County, CO (UTM 12N)		
Map System:	Universal Transverse Mercator (US Survey Feet)	System Datum:	Mean Sea Level
Geo Datum:	NAD 1927 - Western US		
Map Zone:	Zone 12N (114 W to 108 W)		

Site	S36-T7S-R95W (36G)				
Site Position:		Northing:	14,320,581.60 usft	Latitude:	39.395498
From:	Map	Easting:	2,504,539.60 usft	Longitude:	-107.941574
Position Uncertainty:	0.0 usft	Slot Radius:	13-3/16"	Grid Convergence:	1.94 °

Well	33A-36-795					
Well Position	+N/-S	0.0 usft	Northing:	14,320,576.60 usft	Latitude:	39.395485
	+E/-W	0.0 usft	Easting:	2,504,528.10 usft	Longitude:	-107.941615
Position Uncertainty		0.0 usft	Wellhead Elevation:	0.0 usft	Ground Level:	8,872.0 usft

Wellbore	OH				
Magnetics	Model Name	Sample Date	Declination	Dip Angle	Field Strength
			(°)	(°)	(nT)
	HDGM	12/28/2015	9.40	65.60	51,873

Design	PLAN #1			
Audit Notes:				
Version:	Phase:	PLAN	Tie On Depth:	0.0
Vertical Section:	Depth From (TVD)	+N/-S	+E/-W	Direction
	(usft)	(usft)	(usft)	(°)
	0.0	0.0	0.0	188.99

Plan Sections										
Measured Depth (usft)	Inclination (°)	Azimuth (°)	Vertical Depth (usft)	+N/-S (usft)	+E/-W (usft)	Dogleg Rate (°/100usft)	Build Rate (°/100usft)	Turn Rate (°/100usft)	TFO (°)	Target
0.0	0.00	0.00	0.0	0.0	0.0	0.00	0.00	0.00	0.00	
200.0	0.00	0.00	200.0	0.0	0.0	0.00	0.00	0.00	0.00	
500.0	9.00	220.00	498.8	-18.0	-15.1	3.00	3.00	0.00	220.00	
700.0	9.00	220.00	696.3	-42.0	-35.2	0.00	0.00	0.00	0.00	
879.6	9.84	187.02	873.6	-68.0	-46.1	3.00	0.47	-18.36	-97.63	
6,657.2	9.84	187.02	6,566.2	-1,048.4	-166.8	0.00	0.00	0.00	0.00	
6,985.4	0.00	0.00	6,892.7	-1,076.3	-170.3	3.00	-3.00	0.00	180.00	
10,058.7	0.00	0.00	9,966.0	-1,076.3	-170.3	0.00	0.00	0.00	0.00	33A-36-795 PBHL

Planning Report

Database:	USA EDM 5000 Multi Users DB	Local Co-ordinate Reference:	Well 33A-36-795
Company:	Caerus Oil & Gas	TVD Reference:	KB @ 8902.0usft
Project:	Garfield County, CO (UTM 12N)	MD Reference:	KB @ 8902.0usft
Site:	S36-T7S-R95W (36G)	North Reference:	True
Well:	33A-36-795	Survey Calculation Method:	Minimum Curvature
Wellbore:	OH		
Design:	PLAN #1		

Planned Survey									
Measured Depth (usft)	Inclination (°)	Azimuth (°)	Vertical Depth (usft)	+N/-S (usft)	+E/-W (usft)	Vertical Section (usft)	Dogleg Rate (°/100usft)	Build Rate (°/100u)	Comments / Formations
0.0	0.00	0.00	0.0	0.0	0.0	0.0	0.00	0.00	
100.0	0.00	0.00	100.0	0.0	0.0	0.0	0.00	0.00	
200.0	0.00	0.00	200.0	0.0	0.0	0.0	0.00	0.00	Start Build 3.00
300.0	3.00	220.00	300.0	-2.0	-1.7	2.2	3.00	3.00	
400.0	6.00	220.00	399.6	-8.0	-6.7	9.0	3.00	3.00	
500.0	9.00	220.00	498.8	-18.0	-15.1	20.2	3.00	3.00	Start 200.0 hold at 500.0 MD
600.0	9.00	220.00	597.5	-30.0	-25.2	33.6	0.00	0.00	
700.0	9.00	220.00	696.3	-42.0	-35.2	47.0	0.00	0.00	Start DLS 3.00 TFO -97.63
800.0	9.10	200.85	795.1	-55.4	-43.1	61.4	3.00	0.10	
879.6	9.84	187.02	873.6	-68.0	-46.1	74.4	3.00	0.94	Start 5777.6 hold at 879.6 MD
900.0	9.84	187.02	893.7	-71.5	-46.6	77.9	0.00	0.00	
1,000.0	9.84	187.02	992.2	-88.4	-48.7	94.9	0.00	0.00	
1,100.0	9.84	187.02	1,090.8	-105.4	-50.7	112.0	0.00	0.00	
1,200.0	9.84	187.02	1,189.3	-122.4	-52.8	129.1	0.00	0.00	
1,300.0	9.84	187.02	1,287.8	-139.3	-54.9	146.2	0.00	0.00	
1,400.0	9.84	187.02	1,386.3	-156.3	-57.0	163.3	0.00	0.00	
1,500.0	9.84	187.02	1,484.9	-173.3	-59.1	180.4	0.00	0.00	
1,600.0	9.84	187.02	1,583.4	-190.2	-61.2	197.5	0.00	0.00	
1,700.0	9.84	187.02	1,681.9	-207.2	-63.3	214.6	0.00	0.00	
1,800.0	9.84	187.02	1,780.5	-224.2	-65.4	231.6	0.00	0.00	
1,900.0	9.84	187.02	1,879.0	-241.2	-67.5	248.7	0.00	0.00	
2,000.0	9.84	187.02	1,977.5	-258.1	-69.5	265.8	0.00	0.00	
2,100.0	9.84	187.02	2,076.0	-275.1	-71.6	282.9	0.00	0.00	
2,200.0	9.84	187.02	2,174.6	-292.1	-73.7	300.0	0.00	0.00	
2,300.0	9.84	187.02	2,273.1	-309.0	-75.8	317.1	0.00	0.00	
2,400.0	9.84	187.02	2,371.6	-326.0	-77.9	334.2	0.00	0.00	
2,500.0	9.84	187.02	2,470.1	-343.0	-80.0	351.3	0.00	0.00	
2,600.0	9.84	187.02	2,568.7	-359.9	-82.1	368.3	0.00	0.00	
2,700.0	9.84	187.02	2,667.2	-376.9	-84.2	385.4	0.00	0.00	
2,800.0	9.84	187.02	2,765.7	-393.9	-86.3	402.5	0.00	0.00	
2,900.0	9.84	187.02	2,864.3	-410.9	-88.3	419.6	0.00	0.00	
3,000.0	9.84	187.02	2,962.8	-427.8	-90.4	436.7	0.00	0.00	
3,100.0	9.84	187.02	3,061.3	-444.8	-92.5	453.8	0.00	0.00	
3,200.0	9.84	187.02	3,159.8	-461.8	-94.6	470.9	0.00	0.00	
3,300.0	9.84	187.02	3,258.4	-478.7	-96.7	488.0	0.00	0.00	
3,400.0	9.84	187.02	3,356.9	-495.7	-98.8	505.0	0.00	0.00	
3,500.0	9.84	187.02	3,455.4	-512.7	-100.9	522.1	0.00	0.00	
3,600.0	9.84	187.02	3,554.0	-529.6	-103.0	539.2	0.00	0.00	
3,700.0	9.84	187.02	3,652.5	-546.6	-105.1	556.3	0.00	0.00	
3,800.0	9.84	187.02	3,751.0	-563.6	-107.2	573.4	0.00	0.00	
3,900.0	9.84	187.02	3,849.5	-580.5	-109.2	590.5	0.00	0.00	
4,000.0	9.84	187.02	3,948.1	-597.5	-111.3	607.6	0.00	0.00	
4,100.0	9.84	187.02	4,046.6	-614.5	-113.4	624.7	0.00	0.00	
4,200.0	9.84	187.02	4,145.1	-631.5	-115.5	641.7	0.00	0.00	
4,300.0	9.84	187.02	4,243.6	-648.4	-117.6	658.8	0.00	0.00	
4,400.0	9.84	187.02	4,342.2	-665.4	-119.7	675.9	0.00	0.00	
4,500.0	9.84	187.02	4,440.7	-682.4	-121.8	693.0	0.00	0.00	
4,600.0	9.84	187.02	4,539.2	-699.3	-123.9	710.1	0.00	0.00	
4,700.0	9.84	187.02	4,637.8	-716.3	-126.0	727.2	0.00	0.00	
4,800.0	9.84	187.02	4,736.3	-733.3	-128.0	744.3	0.00	0.00	
4,900.0	9.84	187.02	4,834.8	-750.2	-130.1	761.4	0.00	0.00	
5,000.0	9.84	187.02	4,933.3	-767.2	-132.2	778.4	0.00	0.00	

Planning Report

Database:	USA EDM 5000 Multi Users DB	Local Co-ordinate Reference:	Well 33A-36-795
Company:	Caerus Oil & Gas	TVD Reference:	KB @ 8902.0usft
Project:	Garfield County, CO (UTM 12N)	MD Reference:	KB @ 8902.0usft
Site:	S36-T7S-R95W (36G)	North Reference:	True
Well:	33A-36-795	Survey Calculation Method:	Minimum Curvature
Wellbore:	OH		
Design:	PLAN #1		

Planned Survey									
Measured Depth (usft)	Inclination (°)	Azimuth (°)	Vertical Depth (usft)	+N/-S (usft)	+E/-W (usft)	Vertical Section (usft)	Dogleg Rate (°/100usft)	Build Rate (°/100u)	Comments / Formations
5,100.0	9.84	187.02	5,031.9	-784.2	-134.3	795.5	0.00	0.00	
5,200.0	9.84	187.02	5,130.4	-801.1	-136.4	812.6	0.00	0.00	
5,300.0	9.84	187.02	5,228.9	-818.1	-138.5	829.7	0.00	0.00	
5,400.0	9.84	187.02	5,327.4	-835.1	-140.6	846.8	0.00	0.00	
5,500.0	9.84	187.02	5,426.0	-852.1	-142.7	863.9	0.00	0.00	
5,600.0	9.84	187.02	5,524.5	-869.0	-144.8	881.0	0.00	0.00	
5,700.0	9.84	187.02	5,623.0	-886.0	-146.8	898.1	0.00	0.00	
5,800.0	9.84	187.02	5,721.6	-903.0	-148.9	915.1	0.00	0.00	
5,900.0	9.84	187.02	5,820.1	-919.9	-151.0	932.2	0.00	0.00	
6,000.0	9.84	187.02	5,918.6	-936.9	-153.1	949.3	0.00	0.00	
6,100.0	9.84	187.02	6,017.1	-953.9	-155.2	966.4	0.00	0.00	
6,200.0	9.84	187.02	6,115.7	-970.8	-157.3	983.5	0.00	0.00	
6,300.0	9.84	187.02	6,214.2	-987.8	-159.4	1,000.6	0.00	0.00	
6,400.0	9.84	187.02	6,312.7	-1,004.8	-161.5	1,017.7	0.00	0.00	
6,500.0	9.84	187.02	6,411.2	-1,021.8	-163.6	1,034.8	0.00	0.00	
6,600.0	9.84	187.02	6,509.8	-1,038.7	-165.6	1,051.8	0.00	0.00	
6,657.2	9.84	187.02	6,566.2	-1,048.4	-166.8	1,061.6	0.00	0.00	Start Drop -3.00
6,700.0	8.56	187.02	6,608.4	-1,055.2	-167.7	1,068.5	3.00	-3.00	
6,800.0	5.56	187.02	6,707.6	-1,067.4	-169.2	1,080.7	3.00	-3.00	
6,900.0	2.56	187.02	6,807.3	-1,074.5	-170.0	1,087.8	3.00	-3.00	
6,935.7	1.49	187.02	6,843.0	-1,075.7	-170.2	1,089.1	3.00	-3.00	OHIO_CREEK
6,985.4	0.00	0.00	6,892.7	-1,076.3	-170.3	1,089.7	3.00	-3.00	Start 3073.3 hold at 6985.4 MD
7,000.0	0.00	0.00	6,907.3	-1,076.3	-170.3	1,089.7	0.00	0.00	
7,100.0	0.00	0.00	7,007.3	-1,076.3	-170.3	1,089.7	0.00	0.00	
7,200.0	0.00	0.00	7,107.3	-1,076.3	-170.3	1,089.7	0.00	0.00	
7,300.0	0.00	0.00	7,207.3	-1,076.3	-170.3	1,089.7	0.00	0.00	
7,378.7	0.00	0.00	7,286.0	-1,076.3	-170.3	1,089.7	0.00	0.00	WILLIAMS_FORK
7,400.0	0.00	0.00	7,307.3	-1,076.3	-170.3	1,089.7	0.00	0.00	
7,500.0	0.00	0.00	7,407.3	-1,076.3	-170.3	1,089.7	0.00	0.00	
7,600.0	0.00	0.00	7,507.3	-1,076.3	-170.3	1,089.7	0.00	0.00	
7,700.0	0.00	0.00	7,607.3	-1,076.3	-170.3	1,089.7	0.00	0.00	
7,800.0	0.00	0.00	7,707.3	-1,076.3	-170.3	1,089.7	0.00	0.00	
7,900.0	0.00	0.00	7,807.3	-1,076.3	-170.3	1,089.7	0.00	0.00	
8,000.0	0.00	0.00	7,907.3	-1,076.3	-170.3	1,089.7	0.00	0.00	
8,040.7	0.00	0.00	7,948.0	-1,076.3	-170.3	1,089.7	0.00	0.00	TOP_GAS
8,100.0	0.00	0.00	8,007.3	-1,076.3	-170.3	1,089.7	0.00	0.00	
8,200.0	0.00	0.00	8,107.3	-1,076.3	-170.3	1,089.7	0.00	0.00	
8,300.0	0.00	0.00	8,207.3	-1,076.3	-170.3	1,089.7	0.00	0.00	
8,400.0	0.00	0.00	8,307.3	-1,076.3	-170.3	1,089.7	0.00	0.00	
8,500.0	0.00	0.00	8,407.3	-1,076.3	-170.3	1,089.7	0.00	0.00	
8,600.0	0.00	0.00	8,507.3	-1,076.3	-170.3	1,089.7	0.00	0.00	
8,700.0	0.00	0.00	8,607.3	-1,076.3	-170.3	1,089.7	0.00	0.00	
8,800.0	0.00	0.00	8,707.3	-1,076.3	-170.3	1,089.7	0.00	0.00	
8,900.0	0.00	0.00	8,807.3	-1,076.3	-170.3	1,089.7	0.00	0.00	
9,000.0	0.00	0.00	8,907.3	-1,076.3	-170.3	1,089.7	0.00	0.00	
9,100.0	0.00	0.00	9,007.3	-1,076.3	-170.3	1,089.7	0.00	0.00	
9,200.0	0.00	0.00	9,107.3	-1,076.3	-170.3	1,089.7	0.00	0.00	
9,300.0	0.00	0.00	9,207.3	-1,076.3	-170.3	1,089.7	0.00	0.00	
9,400.0	0.00	0.00	9,307.3	-1,076.3	-170.3	1,089.7	0.00	0.00	
9,500.0	0.00	0.00	9,407.3	-1,076.3	-170.3	1,089.7	0.00	0.00	
9,600.0	0.00	0.00	9,507.3	-1,076.3	-170.3	1,089.7	0.00	0.00	
9,653.7	0.00	0.00	9,561.0	-1,076.3	-170.3	1,089.7	0.00	0.00	CAMEO

Planning Report

Database:	USA EDM 5000 Multi Users DB	Local Co-ordinate Reference:	Well 33A-36-795
Company:	Caerus Oil & Gas	TVD Reference:	KB @ 8902.0usft
Project:	Garfield County, CO (UTM 12N)	MD Reference:	KB @ 8902.0usft
Site:	S36-T7S-R95W (36G)	North Reference:	True
Well:	33A-36-795	Survey Calculation Method:	Minimum Curvature
Wellbore:	OH		
Design:	PLAN #1		

Planned Survey									
Measured Depth (usft)	Inclination (°)	Azimuth (°)	Vertical Depth (usft)	+N/-S (usft)	+E/-W (usft)	Vertical Section (usft)	Dogleg Rate (°/100usft)	Build Rate (°/100u)	Comments / Formations
9,700.0	0.00	0.00	9,607.3	-1,076.3	-170.3	1,089.7	0.00	0.00	
9,800.0	0.00	0.00	9,707.3	-1,076.3	-170.3	1,089.7	0.00	0.00	
9,900.0	0.00	0.00	9,807.3	-1,076.3	-170.3	1,089.7	0.00	0.00	
9,908.7	0.00	0.00	9,816.0	-1,076.3	-170.3	1,089.7	0.00	0.00	ROLLINS
10,000.0	0.00	0.00	9,907.3	-1,076.3	-170.3	1,089.7	0.00	0.00	
10,058.7	0.00	0.00	9,966.0	-1,076.3	-170.3	1,089.7	0.00	0.00	TD at 10058.7 - TD

Targets									
Target Name	Dip Angle (°)	Dip Dir. (°)	TVD (usft)	+N/-S (usft)	+E/-W (usft)	Northing (usft)	Easting (usft)	Latitude	Longitude
33A-36-795 PBHL - hit/miss target - Shape - plan hits target center - Circle (radius 0.0)	0.00	0.00	9,966.0	-1,076.3	-170.3	14,319,495.10	2,504,394.40	39.392532	-107.942217

Formations						
Measured Depth (usft)	Vertical Depth (usft)	Name	Lithology	Dip (°)	Dip Direction (°)	
6,935.7	6,843.0	OHIO_CREEK				
7,378.7	7,286.0	WILLIAMS_FORK				
8,040.7	7,948.0	TOP_GAS				
9,653.7	9,561.0	CAMEO				
9,908.7	9,816.0	ROLLINS				
10,058.7	9,966.0	TD				

Plan Annotations				
Measured Depth (usft)	Vertical Depth (usft)	+N/-S (usft)	+E/-W (usft)	Comment
200.0	200.0	0.0	0.0	Start Build 3.00
500.0	498.8	-18.0	-15.1	Start 200.0 hold at 500.0 MD
700.0	696.3	-42.0	-35.2	Start DLS 3.00 TFO -97.63
879.6	873.6	-68.0	-46.1	Start 5777.6 hold at 879.6 MD
6,657.2	6,566.2	-1,048.4	-166.8	Start Drop -3.00
6,985.4	6,892.7	-1,076.3	-170.3	Start 3073.3 hold at 6985.4 MD
10,058.7	9,966.0	-1,076.3	-170.3	TD at 10058.7