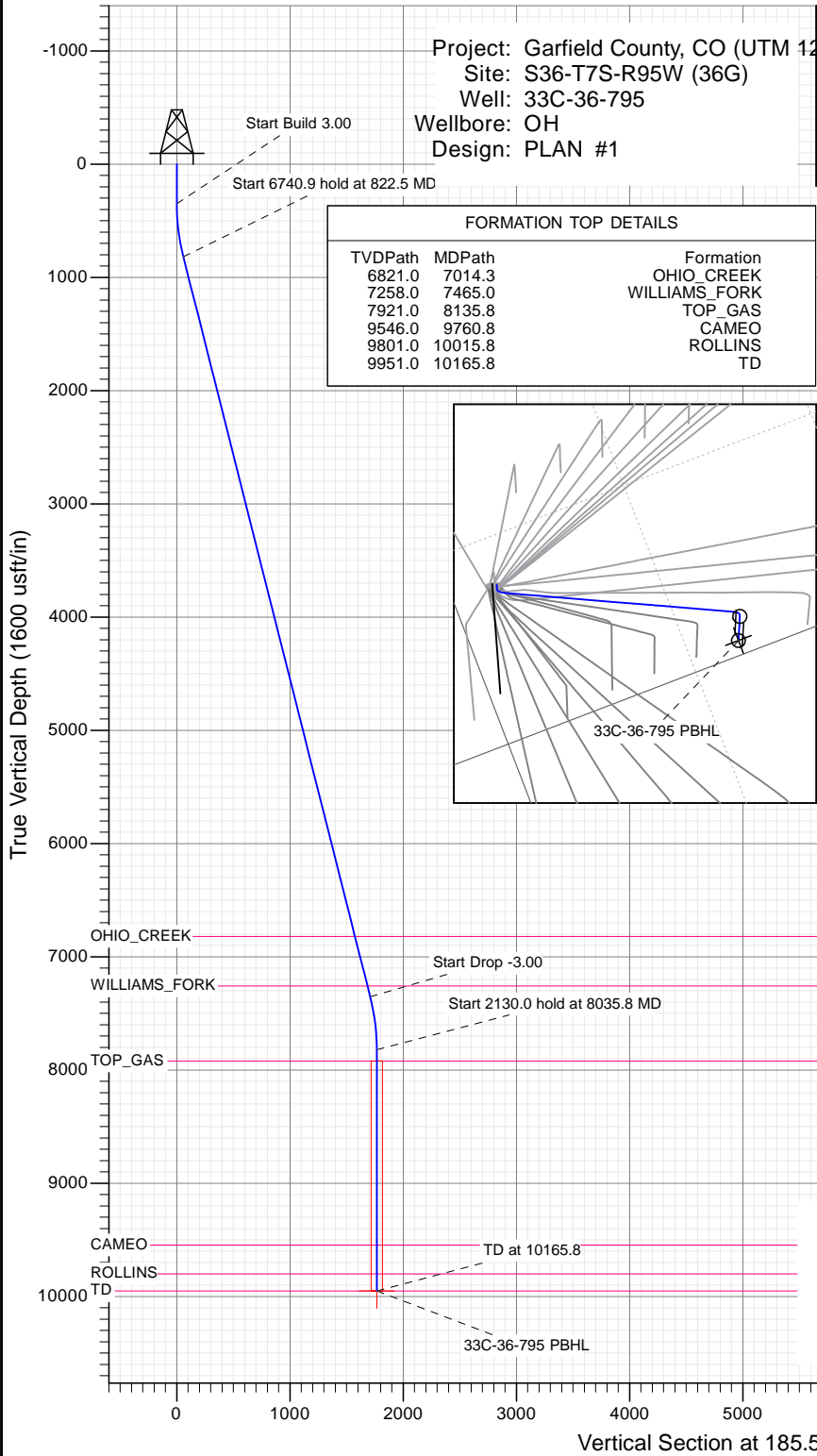




SECTION DETAILS

Sec	MD	Inc	Azi	TVD	+N/-S	+E/-W	Dleg	TFace	VSect	Target
1	0.0	0.00	0.00	0.0	0.0	0.0	0.00	0.00	0.0	
2	350.0	0.00	0.00	350.0	0.0	0.0	0.00	0.00	0.0	
3	822.5	14.17	185.59	817.7	-57.9	-5.7	3.00	185.59	58.1	
4	7563.4	14.17	185.59	7353.3	-1700.7	-166.5	0.00	0.00	1708.8	
5	8035.8	0.00	0.00	7821.0	-1758.6	-172.2	3.00	180.00	1767.0	
6	10165.8	0.00	0.00	9951.0	-1758.6	-172.2	0.00	0.00	1767.0	33C-36-795 PBHL

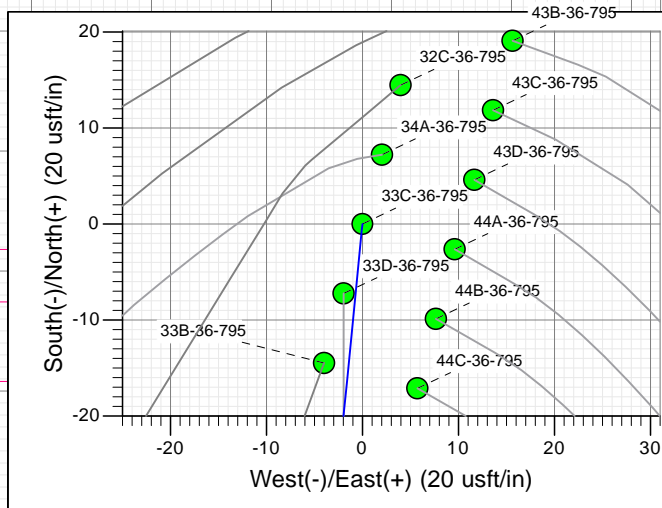
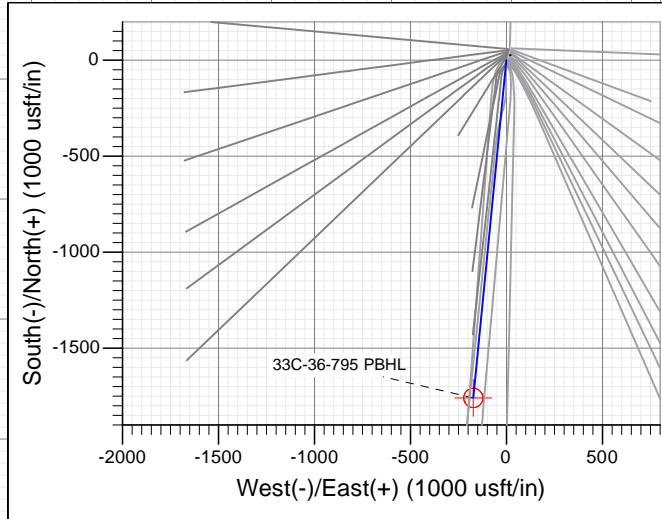


FORMATION TOP DETAILS

TVDPath	MDPath	Formation
6821.0	7014.3	OHIO_CREEK
7258.0	7465.0	WILLIAMS_FORK
7921.0	8135.8	TOP_GAS
9546.0	9760.8	CAMEO
9801.0	10015.8	ROLLINS
9951.0	10165.8	TD

PLAN #1  
33C-36-795  
15XXX LR  
KB @ 8902.0usft  
Ground Level @ 8872.0  
NAD 1927 - Western US  
Well 33C-36-795, True North

Name	Type	Target	No Target (Freehand)	Azimuth	Origin Type	Slot	N/S	E/W	From TVD
33C-36-795 PBHL	TD			185.59			0.0	0.0	0.0



**T M**  
 Azimuths to True North  
 Magnetic North: 9.40°  
 Magnetic Field  
 Strength: 51872.9snT  
 Dip Angle: 65.60°  
 Date: 12/28/2015  
 Model: HDGM

**CASING DETAILS**  
 No casing data is available



WELL DETAILS: 33C-36-795

+N/-S	+E/-W	Northing	Ground Level:	8872.0	Latitude	Longitude
0.0	0.0	14320598.50	Easting	2504533.30	39.395545	-107.941594



## Planning Report

<b>Database:</b>	USA EDM 5000 Multi Users DB	<b>Local Co-ordinate Reference:</b>	Well 33C-36-795
<b>Company:</b>	Caerus Oil & Gas	<b>TVD Reference:</b>	KB @ 8902.0usft
<b>Project:</b>	Garfield County, CO (UTM 12N)	<b>MD Reference:</b>	KB @ 8902.0usft
<b>Site:</b>	S36-T7S-R95W (36G)	<b>North Reference:</b>	True
<b>Well:</b>	33C-36-795	<b>Survey Calculation Method:</b>	Minimum Curvature
<b>Wellbore:</b>	OH		
<b>Design:</b>	PLAN #1		

<b>Project</b>	Garfield County, CO (UTM 12N)		
<b>Map System:</b>	Universal Transverse Mercator (US Survey Feet)	<b>System Datum:</b>	Mean Sea Level
<b>Geo Datum:</b>	NAD 1927 - Western US		
<b>Map Zone:</b>	Zone 12N (114 W to 108 W)		

<b>Site</b>	S36-T7S-R95W (36G)				
<b>Site Position:</b>		<b>Northing:</b>	14,320,581.60 usft	<b>Latitude:</b>	39.395498
<b>From:</b>	Map	<b>Easting:</b>	2,504,539.60 usft	<b>Longitude:</b>	-107.941574
<b>Position Uncertainty:</b>	0.0 usft	<b>Slot Radius:</b>	13-3/16"	<b>Grid Convergence:</b>	1.94 °

<b>Well</b>	33C-36-795					
<b>Well Position</b>	<b>+N/-S</b>	0.0 usft	<b>Northing:</b>	14,320,598.50 usft	<b>Latitude:</b>	39.395545
	<b>+E/-W</b>	0.0 usft	<b>Easting:</b>	2,504,533.30 usft	<b>Longitude:</b>	-107.941594
<b>Position Uncertainty</b>		0.0 usft	<b>Wellhead Elevation:</b>	0.0 usft	<b>Ground Level:</b>	8,872.0 usft

<b>Wellbore</b>	OH				
<b>Magnetics</b>	<b>Model Name</b>	<b>Sample Date</b>	<b>Declination</b>	<b>Dip Angle</b>	<b>Field Strength</b>
			(°)	(°)	(nT)
	HDGM	12/28/2015	9.40	65.60	51,873

<b>Design</b>	PLAN #1			
<b>Audit Notes:</b>				
<b>Version:</b>	<b>Phase:</b>	PLAN	<b>Tie On Depth:</b>	0.0
<b>Vertical Section:</b>	<b>Depth From (TVD)</b>	<b>+N/-S</b>	<b>+E/-W</b>	<b>Direction</b>
	(usft)	(usft)	(usft)	(°)
	0.0	0.0	0.0	185.59

Plan Sections										
Measured Depth (usft)	Inclination (°)	Azimuth (°)	Vertical Depth (usft)	+N/-S (usft)	+E/-W (usft)	Dogleg Rate (°/100usft)	Build Rate (°/100usft)	Turn Rate (°/100usft)	TFO (°)	Target
0.0	0.00	0.00	0.0	0.0	0.0	0.00	0.00	0.00	0.00	
350.0	0.00	0.00	350.0	0.0	0.0	0.00	0.00	0.00	0.00	
822.5	14.17	185.59	817.7	-57.9	-5.7	3.00	3.00	0.00	185.59	
7,563.4	14.17	185.59	7,353.3	-1,700.7	-166.5	0.00	0.00	0.00	0.00	
8,035.8	0.00	0.00	7,821.0	-1,758.6	-172.2	3.00	-3.00	0.00	180.00	
10,165.8	0.00	0.00	9,951.0	-1,758.6	-172.2	0.00	0.00	0.00	0.00	33C-36-795 PBHL

## Planning Report

<b>Database:</b>	USA EDM 5000 Multi Users DB	<b>Local Co-ordinate Reference:</b>	Well 33C-36-795
<b>Company:</b>	Caerus Oil & Gas	<b>TVD Reference:</b>	KB @ 8902.0usft
<b>Project:</b>	Garfield County, CO (UTM 12N)	<b>MD Reference:</b>	KB @ 8902.0usft
<b>Site:</b>	S36-T7S-R95W (36G)	<b>North Reference:</b>	True
<b>Well:</b>	33C-36-795	<b>Survey Calculation Method:</b>	Minimum Curvature
<b>Wellbore:</b>	OH		
<b>Design:</b>	PLAN #1		

Planned Survey									
Measured Depth (usft)	Inclination (°)	Azimuth (°)	Vertical Depth (usft)	+N/-S (usft)	+E/-W (usft)	Vertical Section (usft)	Dogleg Rate (°/100usft)	Build Rate (°/100u)	Comments / Formations
0.0	0.00	0.00	0.0	0.0	0.0	0.0	0.00	0.00	
100.0	0.00	0.00	100.0	0.0	0.0	0.0	0.00	0.00	
200.0	0.00	0.00	200.0	0.0	0.0	0.0	0.00	0.00	
300.0	0.00	0.00	300.0	0.0	0.0	0.0	0.00	0.00	
350.0	0.00	0.00	350.0	0.0	0.0	0.0	0.00	0.00	Start Build 3.00
400.0	1.50	185.59	400.0	-0.7	-0.1	0.7	3.00	3.00	
500.0	4.50	185.59	499.8	-5.9	-0.6	5.9	3.00	3.00	
600.0	7.50	185.59	599.3	-16.3	-1.6	16.3	3.00	3.00	
700.0	10.50	185.59	698.0	-31.8	-3.1	32.0	3.00	3.00	
800.0	13.50	185.59	795.8	-52.5	-5.1	52.8	3.00	3.00	
822.5	14.17	185.59	817.7	-57.9	-5.7	58.1	3.00	3.00	Start 6740.9 hold at 822.5 MD
900.0	14.17	185.59	892.8	-76.8	-7.5	77.1	0.00	0.00	
1,000.0	14.17	185.59	989.8	-101.1	-9.9	101.6	0.00	0.00	
1,100.0	14.17	185.59	1,086.7	-125.5	-12.3	126.1	0.00	0.00	
1,200.0	14.17	185.59	1,183.7	-149.9	-14.7	150.6	0.00	0.00	
1,300.0	14.17	185.59	1,280.7	-174.2	-17.1	175.1	0.00	0.00	
1,400.0	14.17	185.59	1,377.6	-198.6	-19.4	199.6	0.00	0.00	
1,500.0	14.17	185.59	1,474.6	-223.0	-21.8	224.1	0.00	0.00	
1,600.0	14.17	185.59	1,571.5	-247.4	-24.2	248.5	0.00	0.00	
1,700.0	14.17	185.59	1,668.5	-271.7	-26.6	273.0	0.00	0.00	
1,800.0	14.17	185.59	1,765.4	-296.1	-29.0	297.5	0.00	0.00	
1,900.0	14.17	185.59	1,862.4	-320.5	-31.4	322.0	0.00	0.00	
2,000.0	14.17	185.59	1,959.3	-344.8	-33.8	346.5	0.00	0.00	
2,100.0	14.17	185.59	2,056.3	-369.2	-36.2	371.0	0.00	0.00	
2,200.0	14.17	185.59	2,153.3	-393.6	-38.5	395.5	0.00	0.00	
2,300.0	14.17	185.59	2,250.2	-418.0	-40.9	420.0	0.00	0.00	
2,400.0	14.17	185.59	2,347.2	-442.3	-43.3	444.4	0.00	0.00	
2,500.0	14.17	185.59	2,444.1	-466.7	-45.7	468.9	0.00	0.00	
2,600.0	14.17	185.59	2,541.1	-491.1	-48.1	493.4	0.00	0.00	
2,700.0	14.17	185.59	2,638.0	-515.4	-50.5	517.9	0.00	0.00	
2,800.0	14.17	185.59	2,735.0	-539.8	-52.9	542.4	0.00	0.00	
2,900.0	14.17	185.59	2,831.9	-564.2	-55.2	566.9	0.00	0.00	
3,000.0	14.17	185.59	2,928.9	-588.6	-57.6	591.4	0.00	0.00	
3,100.0	14.17	185.59	3,025.9	-612.9	-60.0	615.9	0.00	0.00	
3,200.0	14.17	185.59	3,122.8	-637.3	-62.4	640.3	0.00	0.00	
3,300.0	14.17	185.59	3,219.8	-661.7	-64.8	664.8	0.00	0.00	
3,400.0	14.17	185.59	3,316.7	-686.0	-67.2	689.3	0.00	0.00	
3,500.0	14.17	185.59	3,413.7	-710.4	-69.6	713.8	0.00	0.00	
3,600.0	14.17	185.59	3,510.6	-734.8	-72.0	738.3	0.00	0.00	
3,700.0	14.17	185.59	3,607.6	-759.2	-74.3	762.8	0.00	0.00	
3,800.0	14.17	185.59	3,704.5	-783.5	-76.7	787.3	0.00	0.00	
3,900.0	14.17	185.59	3,801.5	-807.9	-79.1	811.8	0.00	0.00	
4,000.0	14.17	185.59	3,898.5	-832.3	-81.5	836.3	0.00	0.00	
4,100.0	14.17	185.59	3,995.4	-856.6	-83.9	860.7	0.00	0.00	
4,200.0	14.17	185.59	4,092.4	-881.0	-86.3	885.2	0.00	0.00	
4,300.0	14.17	185.59	4,189.3	-905.4	-88.7	909.7	0.00	0.00	
4,400.0	14.17	185.59	4,286.3	-929.8	-91.0	934.2	0.00	0.00	
4,500.0	14.17	185.59	4,383.2	-954.1	-93.4	958.7	0.00	0.00	
4,600.0	14.17	185.59	4,480.2	-978.5	-95.8	983.2	0.00	0.00	
4,700.0	14.17	185.59	4,577.1	-1,002.9	-98.2	1,007.7	0.00	0.00	
4,800.0	14.17	185.59	4,674.1	-1,027.2	-100.6	1,032.2	0.00	0.00	
4,900.0	14.17	185.59	4,771.1	-1,051.6	-103.0	1,056.6	0.00	0.00	

Planning Report

<b>Database:</b>	USA EDM 5000 Multi Users DB	<b>Local Co-ordinate Reference:</b>	Well 33C-36-795
<b>Company:</b>	Caerus Oil & Gas	<b>TVD Reference:</b>	KB @ 8902.0usft
<b>Project:</b>	Garfield County, CO (UTM 12N)	<b>MD Reference:</b>	KB @ 8902.0usft
<b>Site:</b>	S36-T7S-R95W (36G)	<b>North Reference:</b>	True
<b>Well:</b>	33C-36-795	<b>Survey Calculation Method:</b>	Minimum Curvature
<b>Wellbore:</b>	OH		
<b>Design:</b>	PLAN #1		

Planned Survey									
Measured Depth (usft)	Inclination (°)	Azimuth (°)	Vertical Depth (usft)	+N/-S (usft)	+E/-W (usft)	Vertical Section (usft)	Dogleg Rate (°/100usft)	Build Rate (°/100u)	Comments / Formations
5,000.0	14.17	185.59	4,868.0	-1,076.0	-105.4	1,081.1	0.00	0.00	
5,100.0	14.17	185.59	4,965.0	-1,100.4	-107.7	1,105.6	0.00	0.00	
5,200.0	14.17	185.59	5,061.9	-1,124.7	-110.1	1,130.1	0.00	0.00	
5,300.0	14.17	185.59	5,158.9	-1,149.1	-112.5	1,154.6	0.00	0.00	
5,400.0	14.17	185.59	5,255.8	-1,173.5	-114.9	1,179.1	0.00	0.00	
5,500.0	14.17	185.59	5,352.8	-1,197.8	-117.3	1,203.6	0.00	0.00	
5,600.0	14.17	185.59	5,449.7	-1,222.2	-119.7	1,228.1	0.00	0.00	
5,700.0	14.17	185.59	5,546.7	-1,246.6	-122.1	1,252.5	0.00	0.00	
5,800.0	14.17	185.59	5,643.6	-1,271.0	-124.5	1,277.0	0.00	0.00	
5,900.0	14.17	185.59	5,740.6	-1,295.3	-126.8	1,301.5	0.00	0.00	
6,000.0	14.17	185.59	5,837.6	-1,319.7	-129.2	1,326.0	0.00	0.00	
6,100.0	14.17	185.59	5,934.5	-1,344.1	-131.6	1,350.5	0.00	0.00	
6,200.0	14.17	185.59	6,031.5	-1,368.4	-134.0	1,375.0	0.00	0.00	
6,300.0	14.17	185.59	6,128.4	-1,392.8	-136.4	1,399.5	0.00	0.00	
6,400.0	14.17	185.59	6,225.4	-1,417.2	-138.8	1,424.0	0.00	0.00	
6,500.0	14.17	185.59	6,322.3	-1,441.6	-141.2	1,448.4	0.00	0.00	
6,600.0	14.17	185.59	6,419.3	-1,465.9	-143.5	1,472.9	0.00	0.00	
6,700.0	14.17	185.59	6,516.2	-1,490.3	-145.9	1,497.4	0.00	0.00	
6,800.0	14.17	185.59	6,613.2	-1,514.7	-148.3	1,521.9	0.00	0.00	
6,900.0	14.17	185.59	6,710.2	-1,539.0	-150.7	1,546.4	0.00	0.00	
7,000.0	14.17	185.59	6,807.1	-1,563.4	-153.1	1,570.9	0.00	0.00	
7,014.3	14.17	185.59	6,821.0	-1,566.9	-153.4	1,574.4	0.00	0.00	OHIO_CREEK
7,100.0	14.17	185.59	6,904.1	-1,587.8	-155.5	1,595.4	0.00	0.00	
7,200.0	14.17	185.59	7,001.0	-1,612.1	-157.9	1,619.9	0.00	0.00	
7,300.0	14.17	185.59	7,098.0	-1,636.5	-160.3	1,644.3	0.00	0.00	
7,400.0	14.17	185.59	7,194.9	-1,660.9	-162.6	1,668.8	0.00	0.00	
7,465.0	14.17	185.59	7,258.0	-1,676.7	-164.2	1,684.8	0.00	0.00	WILLIAMS_FORK
7,500.0	14.17	185.59	7,291.9	-1,685.3	-165.0	1,693.3	0.00	0.00	
7,563.4	14.17	185.59	7,353.3	-1,700.7	-166.5	1,708.8	0.00	0.00	Start Drop -3.00
7,600.0	13.08	185.59	7,388.9	-1,709.3	-167.4	1,717.5	3.00	-3.00	
7,700.0	10.08	185.59	7,486.9	-1,729.3	-169.3	1,737.5	3.00	-3.00	
7,800.0	7.08	185.59	7,585.8	-1,744.1	-170.8	1,752.4	3.00	-3.00	
7,900.0	4.08	185.59	7,685.3	-1,753.8	-171.7	1,762.2	3.00	-3.00	
8,000.0	1.08	185.59	7,785.2	-1,758.2	-172.2	1,766.6	3.00	-3.00	
8,035.8	0.00	0.00	7,821.0	-1,758.6	-172.2	1,767.0	3.00	-3.00	Start 2130.0 hold at 8035.8 MD
8,100.0	0.00	0.00	7,885.2	-1,758.6	-172.2	1,767.0	0.00	0.00	
8,135.8	0.00	0.00	7,921.0	-1,758.6	-172.2	1,767.0	0.00	0.00	TOP_GAS
8,200.0	0.00	0.00	7,985.2	-1,758.6	-172.2	1,767.0	0.00	0.00	
8,300.0	0.00	0.00	8,085.2	-1,758.6	-172.2	1,767.0	0.00	0.00	
8,400.0	0.00	0.00	8,185.2	-1,758.6	-172.2	1,767.0	0.00	0.00	
8,500.0	0.00	0.00	8,285.2	-1,758.6	-172.2	1,767.0	0.00	0.00	
8,600.0	0.00	0.00	8,385.2	-1,758.6	-172.2	1,767.0	0.00	0.00	
8,700.0	0.00	0.00	8,485.2	-1,758.6	-172.2	1,767.0	0.00	0.00	
8,800.0	0.00	0.00	8,585.2	-1,758.6	-172.2	1,767.0	0.00	0.00	
8,900.0	0.00	0.00	8,685.2	-1,758.6	-172.2	1,767.0	0.00	0.00	
9,000.0	0.00	0.00	8,785.2	-1,758.6	-172.2	1,767.0	0.00	0.00	
9,100.0	0.00	0.00	8,885.2	-1,758.6	-172.2	1,767.0	0.00	0.00	
9,200.0	0.00	0.00	8,985.2	-1,758.6	-172.2	1,767.0	0.00	0.00	
9,300.0	0.00	0.00	9,085.2	-1,758.6	-172.2	1,767.0	0.00	0.00	
9,400.0	0.00	0.00	9,185.2	-1,758.6	-172.2	1,767.0	0.00	0.00	
9,500.0	0.00	0.00	9,285.2	-1,758.6	-172.2	1,767.0	0.00	0.00	
9,600.0	0.00	0.00	9,385.2	-1,758.6	-172.2	1,767.0	0.00	0.00	

## Planning Report

<b>Database:</b>	USA EDM 5000 Multi Users DB	<b>Local Co-ordinate Reference:</b>	Well 33C-36-795
<b>Company:</b>	Caerus Oil & Gas	<b>TVD Reference:</b>	KB @ 8902.0usft
<b>Project:</b>	Garfield County, CO (UTM 12N)	<b>MD Reference:</b>	KB @ 8902.0usft
<b>Site:</b>	S36-T7S-R95W (36G)	<b>North Reference:</b>	True
<b>Well:</b>	33C-36-795	<b>Survey Calculation Method:</b>	Minimum Curvature
<b>Wellbore:</b>	OH		
<b>Design:</b>	PLAN #1		

Planned Survey									
Measured Depth (usft)	Inclination (°)	Azimuth (°)	Vertical Depth (usft)	+N/-S (usft)	+E/-W (usft)	Vertical Section (usft)	Dogleg Rate (°/100usft)	Build Rate (°/100u)	Comments / Formations
9,700.0	0.00	0.00	9,485.2	-1,758.6	-172.2	1,767.0	0.00	0.00	
9,760.8	0.00	0.00	9,546.0	-1,758.6	-172.2	1,767.0	0.00	0.00	CAMEO
9,800.0	0.00	0.00	9,585.2	-1,758.6	-172.2	1,767.0	0.00	0.00	
9,900.0	0.00	0.00	9,685.2	-1,758.6	-172.2	1,767.0	0.00	0.00	
10,000.0	0.00	0.00	9,785.2	-1,758.6	-172.2	1,767.0	0.00	0.00	
10,015.8	0.00	0.00	9,801.0	-1,758.6	-172.2	1,767.0	0.00	0.00	ROLLINS
10,100.0	0.00	0.00	9,885.2	-1,758.6	-172.2	1,767.0	0.00	0.00	
10,165.8	0.00	0.00	9,951.0	-1,758.6	-172.2	1,767.0	0.00	0.00	TD at 10165.8 - TD

Targets									
Target Name	Dip Angle (°)	Dip Dir. (°)	TVD (usft)	+N/-S (usft)	+E/-W (usft)	Northing (usft)	Easting (usft)	Latitude	Longitude
33C-36-795 PBHL - hit/miss target - Shape - plan hits target center - Circle (radius 50.0)	0.00	0.00	9,951.0	-1,758.6	-172.2	14,318,835.10	2,504,420.80	39.390719	-107.942203

Formations						
Measured Depth (usft)	Vertical Depth (usft)	Name	Lithology	Dip (°)	Dip Direction (°)	
7,014.3	6,821.0	OHIO_CREEK				
7,465.0	7,258.0	WILLIAMS_FORK				
8,135.8	7,921.0	TOP_GAS				
9,760.8	9,546.0	CAMEO				
10,015.8	9,801.0	ROLLINS				
10,165.8	9,951.0	TD				

Plan Annotations					
Measured Depth (usft)	Vertical Depth (usft)	+N/-S (usft)	+E/-W (usft)	Comment	
350.0	350.0	0.0	0.0	Start Build 3.00	
822.5	817.7	-57.9	-5.7	Start 6740.9 hold at 822.5 MD	
7,563.4	7,353.3	-1,700.7	-166.5	Start Drop -3.00	
8,035.8	7,821.0	-1,758.6	-172.2	Start 2130.0 hold at 8035.8 MD	
10,165.8	9,951.0	-1,758.6	-172.2	TD at 10165.8	