



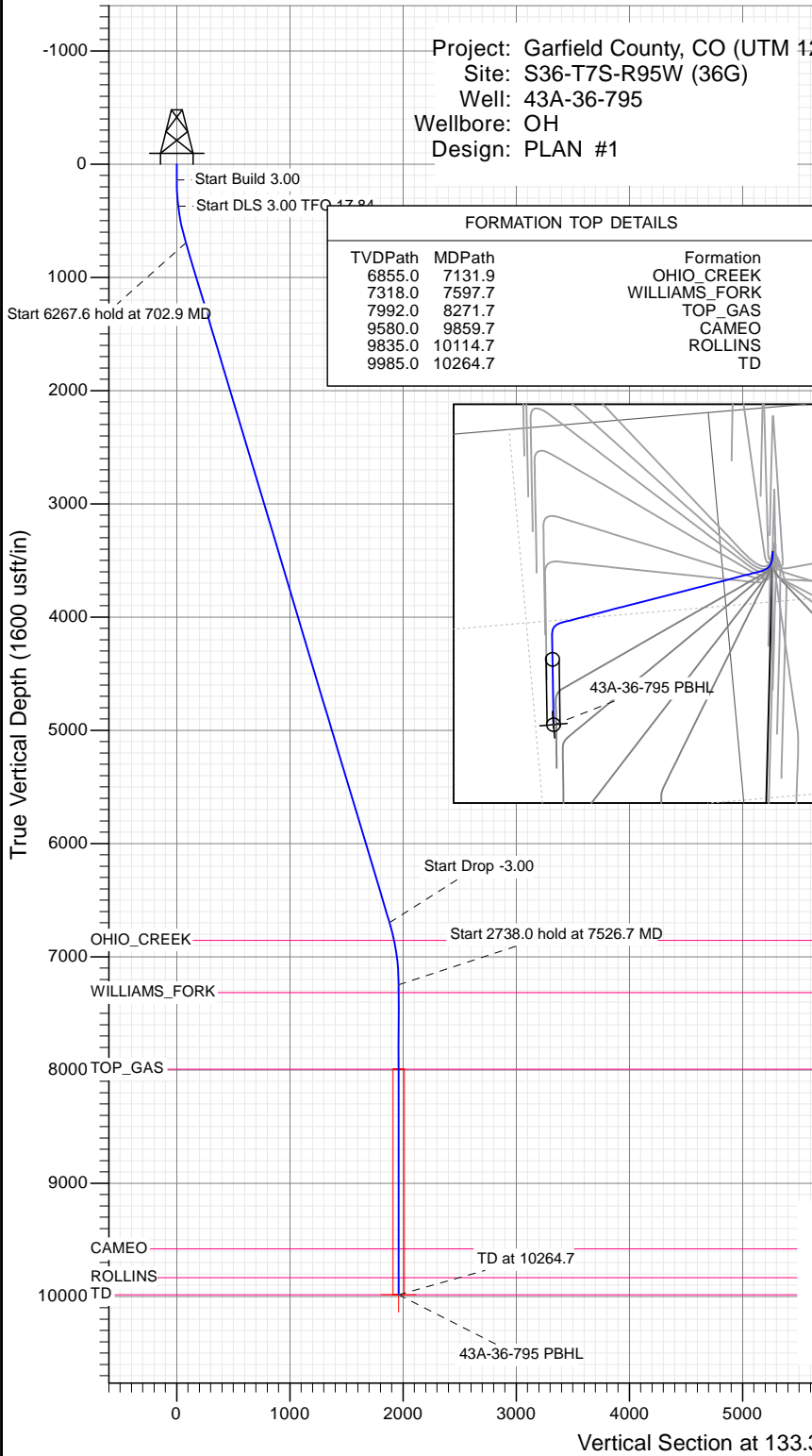
SECTION DETAILS

Sec	MD	Inc	Azi	TVD	+N/-S	+E/-W	Dleg	TFace	VSect	Target
1	0.0	0.00	0.00	0.0	0.0	0.0	0.00	0.00	0.0	
2	140.0	0.00	0.00	140.0	0.0	0.0	0.00	0.00	0.0	
3	373.3	7.00	123.00	372.8	-7.8	11.9	3.00	123.00	14.0	
4	702.9	16.69	133.55	694.9	-51.4	63.2	3.00	17.84	81.2	
5	6970.5	16.69	133.55	6698.6	-1291.4	1367.5	0.00	0.00	1880.9	
6	7526.7	0.00	0.00	7247.0	-1346.8	1425.8	3.00	180.00	1961.3	
7	10264.7	0.00	0.00	9985.0	-1346.8	1425.8	0.00	0.00	1961.3	43A-36-795 PBHL

Project: Garfield County, CO (UTM 12
 Site: S36-T7S-R95W (36G)
 Well: 43A-36-795
 Wellbore: OH
 Design: PLAN #1

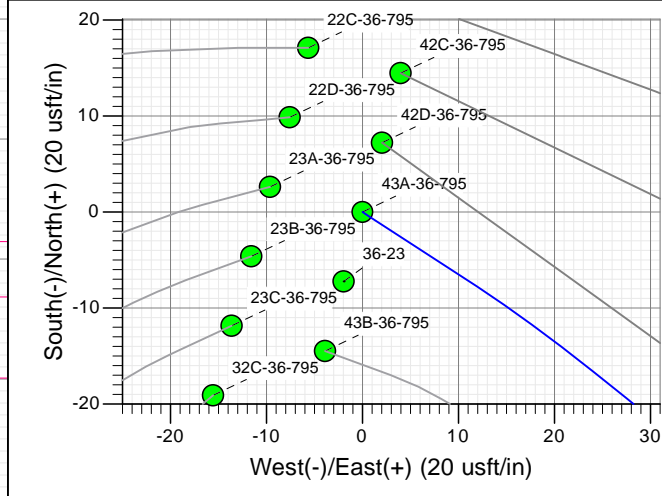
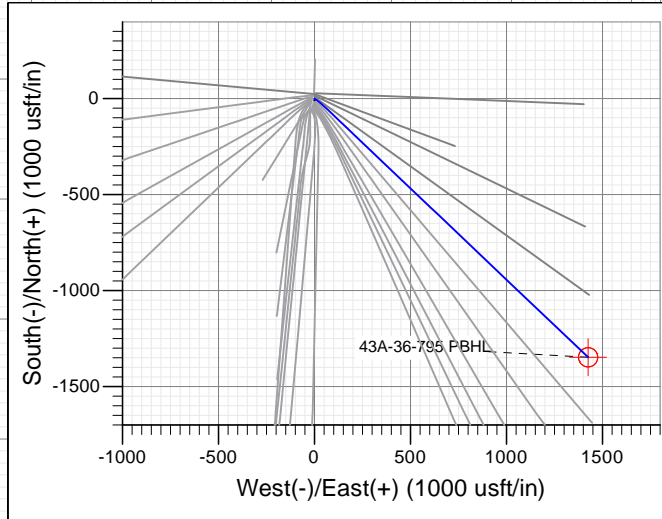
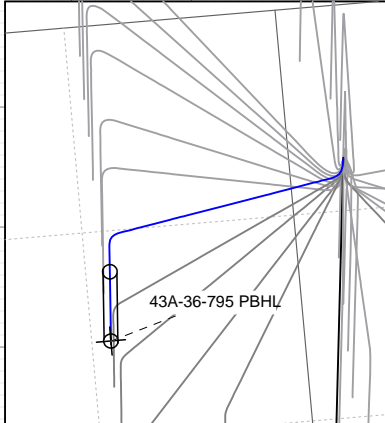
Name	Type	Target	No Target (Freehand)	Azimuth	Origin Type	N/S	E/W	From TVD
43A-36-795 PBHL	TD			133.37	Slot	0.0	0.0	0.0

PLAN #1
 43A-36-795
 15XXX LR
 KB @ 8902.0usft
 Ground Level @ 8872.0
 NAD 1927 - Western US
 Well 43A-36-795, True North



FORMATION TOP DETAILS

TVDPPath	MDPath	Formation
6855.0	7131.9	OHIO_CREEK
7318.0	7597.7	WILLIAMS_FORK
7992.0	8271.7	TOP_GAS
9580.0	9859.7	CAMEO
9835.0	10114.7	ROLLINS
9985.0	10264.7	TD



↑ T
 ↓ M
 Azimuths to True North
 Magnetic North: 9.40°
 Magnetic Field
 Strength: 51872.9snT
 Dip Angle: 65.60°
 Date: 12/28/2015
 Model: HDGM

CASING DETAILS

No casing data is available



WELL DETAILS: 43A-36-795

Ground Level: 8872.0

+N/-S	+E/-W	Northing	Easting	Latitude	Longitude
0.0	0.0	14320632.70	2504551.70	39.395637	-107.941525

Planning Report

Database:	USA EDM 5000 Multi Users DB	Local Co-ordinate Reference:	Well 43A-36-795
Company:	Caerus Oil & Gas	TVD Reference:	KB @ 8902.0usft
Project:	Garfield County, CO (UTM 12N)	MD Reference:	KB @ 8902.0usft
Site:	S36-T7S-R95W (36G)	North Reference:	True
Well:	43A-36-795	Survey Calculation Method:	Minimum Curvature
Wellbore:	OH		
Design:	PLAN #1		

Project	Garfield County, CO (UTM 12N)		
Map System:	Universal Transverse Mercator (US Survey Feet)	System Datum:	Mean Sea Level
Geo Datum:	NAD 1927 - Western US		
Map Zone:	Zone 12N (114 W to 108 W)		

Site	S36-T7S-R95W (36G)				
Site Position:		Northing:	14,320,581.60 usft	Latitude:	39.395498
From:	Map	Easting:	2,504,539.60 usft	Longitude:	-107.941574
Position Uncertainty:	0.0 usft	Slot Radius:	13-3/16"	Grid Convergence:	1.94 °

Well	43A-36-795					
Well Position	+N/-S	0.0 usft	Northing:	14,320,632.70 usft	Latitude:	39.395637
	+E/-W	0.0 usft	Easting:	2,504,551.70 usft	Longitude:	-107.941525
Position Uncertainty		0.0 usft	Wellhead Elevation:	0.0 usft	Ground Level:	8,872.0 usft

Wellbore	OH				
Magnetics	Model Name	Sample Date	Declination	Dip Angle	Field Strength
	HDGM	12/28/2015	(°) 9.40	(°) 65.60	(nT) 51,873

Design	PLAN #1			
Audit Notes:				
Version:	Phase:	PLAN	Tie On Depth:	0.0
Vertical Section:	Depth From (TVD)	+N/-S	+E/-W	Direction
	(usft)	(usft)	(usft)	(°)
	0.0	0.0	0.0	133.37

Plan Sections										
Measured Depth (usft)	Inclination (°)	Azimuth (°)	Vertical Depth (usft)	+N/-S (usft)	+E/-W (usft)	Dogleg Rate (°/100usft)	Build Rate (°/100usft)	Turn Rate (°/100usft)	TFO (°)	Target
0.0	0.00	0.00	0.0	0.0	0.0	0.00	0.00	0.00	0.00	
140.0	0.00	0.00	140.0	0.0	0.0	0.00	0.00	0.00	0.00	
373.3	7.00	123.00	372.8	-7.8	11.9	3.00	3.00	0.00	123.00	
702.9	16.69	133.55	694.9	-51.4	63.2	3.00	2.94	3.20	17.84	
6,970.5	16.69	133.55	6,698.6	-1,291.4	1,367.5	0.00	0.00	0.00	0.00	
7,526.7	0.00	0.00	7,247.0	-1,346.8	1,425.8	3.00	-3.00	0.00	180.00	
10,264.7	0.00	0.00	9,985.0	-1,346.8	1,425.8	0.00	0.00	0.00	0.00	43A-36-795 PBHL

Planning Report

Database:	USA EDM 5000 Multi Users DB	Local Co-ordinate Reference:	Well 43A-36-795
Company:	Caerus Oil & Gas	TVD Reference:	KB @ 8902.0usft
Project:	Garfield County, CO (UTM 12N)	MD Reference:	KB @ 8902.0usft
Site:	S36-T7S-R95W (36G)	North Reference:	True
Well:	43A-36-795	Survey Calculation Method:	Minimum Curvature
Wellbore:	OH		
Design:	PLAN #1		

Planned Survey									
Measured Depth (usft)	Inclination (°)	Azimuth (°)	Vertical Depth (usft)	+N/-S (usft)	+E/-W (usft)	Vertical Section (usft)	Dogleg Rate (°/100usft)	Build Rate (°/100u)	Comments / Formations
0.0	0.00	0.00	0.0	0.0	0.0	0.0	0.00	0.00	
100.0	0.00	0.00	100.0	0.0	0.0	0.0	0.00	0.00	
140.0	0.00	0.00	140.0	0.0	0.0	0.0	0.00	0.00	Start Build 3.00
200.0	1.80	123.00	200.0	-0.5	0.8	0.9	3.00	3.00	
300.0	4.80	123.00	299.8	-3.6	5.6	6.6	3.00	3.00	
373.3	7.00	123.00	372.8	-7.8	11.9	14.0	3.00	3.00	Start DLS 3.00 TFO 17.84
400.0	7.77	124.81	399.2	-9.7	14.8	17.4	3.00	2.87	
500.0	10.68	129.29	497.9	-19.4	27.5	33.3	3.00	2.92	
600.0	13.63	131.85	595.6	-33.1	43.5	54.3	3.00	2.95	
700.0	16.60	133.51	692.2	-50.8	62.6	80.4	3.00	2.97	
702.9	16.69	133.55	694.9	-51.4	63.2	81.2	3.00	2.97	Start 6267.6 hold at 702.9 MD
800.0	16.69	133.55	788.0	-70.6	83.4	109.1	0.00	0.00	
900.0	16.69	133.55	883.8	-90.4	104.2	137.8	0.00	0.00	
1,000.0	16.69	133.55	979.5	-110.2	125.0	166.5	0.00	0.00	
1,100.0	16.69	133.55	1,075.3	-130.0	145.8	195.3	0.00	0.00	
1,200.0	16.69	133.55	1,171.1	-149.7	166.6	224.0	0.00	0.00	
1,300.0	16.69	133.55	1,266.9	-169.5	187.5	252.7	0.00	0.00	
1,400.0	16.69	133.55	1,362.7	-189.3	208.3	281.4	0.00	0.00	
1,500.0	16.69	133.55	1,458.5	-209.1	229.1	310.1	0.00	0.00	
1,600.0	16.69	133.55	1,554.3	-228.9	249.9	338.8	0.00	0.00	
1,700.0	16.69	133.55	1,650.1	-248.7	270.7	367.5	0.00	0.00	
1,800.0	16.69	133.55	1,745.9	-268.5	291.5	396.3	0.00	0.00	
1,900.0	16.69	133.55	1,841.6	-288.2	312.3	425.0	0.00	0.00	
2,000.0	16.69	133.55	1,937.4	-308.0	333.1	453.7	0.00	0.00	
2,100.0	16.69	133.55	2,033.2	-327.8	353.9	482.4	0.00	0.00	
2,200.0	16.69	133.55	2,129.0	-347.6	374.7	511.1	0.00	0.00	
2,300.0	16.69	133.55	2,224.8	-367.4	395.6	539.8	0.00	0.00	
2,400.0	16.69	133.55	2,320.6	-387.2	416.4	568.5	0.00	0.00	
2,500.0	16.69	133.55	2,416.4	-406.9	437.2	597.2	0.00	0.00	
2,600.0	16.69	133.55	2,512.2	-426.7	458.0	626.0	0.00	0.00	
2,700.0	16.69	133.55	2,608.0	-446.5	478.8	654.7	0.00	0.00	
2,800.0	16.69	133.55	2,703.7	-466.3	499.6	683.4	0.00	0.00	
2,900.0	16.69	133.55	2,799.5	-486.1	520.4	712.1	0.00	0.00	
3,000.0	16.69	133.55	2,895.3	-505.9	541.2	740.8	0.00	0.00	
3,100.0	16.69	133.55	2,991.1	-525.6	562.0	769.5	0.00	0.00	
3,200.0	16.69	133.55	3,086.9	-545.4	582.8	798.2	0.00	0.00	
3,300.0	16.69	133.55	3,182.7	-565.2	603.7	827.0	0.00	0.00	
3,400.0	16.69	133.55	3,278.5	-585.0	624.5	855.7	0.00	0.00	
3,500.0	16.69	133.55	3,374.3	-604.8	645.3	884.4	0.00	0.00	
3,600.0	16.69	133.55	3,470.1	-624.6	666.1	913.1	0.00	0.00	
3,700.0	16.69	133.55	3,565.8	-644.3	686.9	941.8	0.00	0.00	
3,800.0	16.69	133.55	3,661.6	-664.1	707.7	970.5	0.00	0.00	
3,900.0	16.69	133.55	3,757.4	-683.9	728.5	999.2	0.00	0.00	
4,000.0	16.69	133.55	3,853.2	-703.7	749.3	1,027.9	0.00	0.00	
4,100.0	16.69	133.55	3,949.0	-723.5	770.1	1,056.7	0.00	0.00	
4,200.0	16.69	133.55	4,044.8	-743.3	790.9	1,085.4	0.00	0.00	
4,300.0	16.69	133.55	4,140.6	-763.1	811.8	1,114.1	0.00	0.00	
4,400.0	16.69	133.55	4,236.4	-782.8	832.6	1,142.8	0.00	0.00	
4,500.0	16.69	133.55	4,332.2	-802.6	853.4	1,171.5	0.00	0.00	
4,600.0	16.69	133.55	4,427.9	-822.4	874.2	1,200.2	0.00	0.00	
4,700.0	16.69	133.55	4,523.7	-842.2	895.0	1,228.9	0.00	0.00	
4,800.0	16.69	133.55	4,619.5	-862.0	915.8	1,257.7	0.00	0.00	

Planning Report

Database:	USA EDM 5000 Multi Users DB	Local Co-ordinate Reference:	Well 43A-36-795
Company:	Caerus Oil & Gas	TVD Reference:	KB @ 8902.0usft
Project:	Garfield County, CO (UTM 12N)	MD Reference:	KB @ 8902.0usft
Site:	S36-T7S-R95W (36G)	North Reference:	True
Well:	43A-36-795	Survey Calculation Method:	Minimum Curvature
Wellbore:	OH		
Design:	PLAN #1		

Planned Survey									
Measured Depth (usft)	Inclination (°)	Azimuth (°)	Vertical Depth (usft)	+N/-S (usft)	+E/-W (usft)	Vertical Section (usft)	Dogleg Rate (°/100usft)	Build Rate (°/100u)	Comments / Formations
4,900.0	16.69	133.55	4,715.3	-881.8	936.6	1,286.4	0.00	0.00	
5,000.0	16.69	133.55	4,811.1	-901.5	957.4	1,315.1	0.00	0.00	
5,100.0	16.69	133.55	4,906.9	-921.3	978.2	1,343.8	0.00	0.00	
5,200.0	16.69	133.55	5,002.7	-941.1	999.0	1,372.5	0.00	0.00	
5,300.0	16.69	133.55	5,098.5	-960.9	1,019.9	1,401.2	0.00	0.00	
5,400.0	16.69	133.55	5,194.3	-980.7	1,040.7	1,429.9	0.00	0.00	
5,500.0	16.69	133.55	5,290.0	-1,000.5	1,061.5	1,458.6	0.00	0.00	
5,600.0	16.69	133.55	5,385.8	-1,020.2	1,082.3	1,487.4	0.00	0.00	
5,700.0	16.69	133.55	5,481.6	-1,040.0	1,103.1	1,516.1	0.00	0.00	
5,800.0	16.69	133.55	5,577.4	-1,059.8	1,123.9	1,544.8	0.00	0.00	
5,900.0	16.69	133.55	5,673.2	-1,079.6	1,144.7	1,573.5	0.00	0.00	
6,000.0	16.69	133.55	5,769.0	-1,099.4	1,165.5	1,602.2	0.00	0.00	
6,100.0	16.69	133.55	5,864.8	-1,119.2	1,186.3	1,630.9	0.00	0.00	
6,200.0	16.69	133.55	5,960.6	-1,138.9	1,207.1	1,659.6	0.00	0.00	
6,300.0	16.69	133.55	6,056.4	-1,158.7	1,228.0	1,688.4	0.00	0.00	
6,400.0	16.69	133.55	6,152.1	-1,178.5	1,248.8	1,717.1	0.00	0.00	
6,500.0	16.69	133.55	6,247.9	-1,198.3	1,269.6	1,745.8	0.00	0.00	
6,600.0	16.69	133.55	6,343.7	-1,218.1	1,290.4	1,774.5	0.00	0.00	
6,700.0	16.69	133.55	6,439.5	-1,237.9	1,311.2	1,803.2	0.00	0.00	
6,800.0	16.69	133.55	6,535.3	-1,257.7	1,332.0	1,831.9	0.00	0.00	
6,900.0	16.69	133.55	6,631.1	-1,277.4	1,352.8	1,860.6	0.00	0.00	
6,970.5	16.69	133.55	6,698.6	-1,291.4	1,367.5	1,880.9	0.00	0.00	Start Drop -3.00
7,000.0	15.80	133.55	6,726.9	-1,297.1	1,373.5	1,889.1	3.00	-3.00	
7,100.0	12.80	133.55	6,823.8	-1,314.1	1,391.4	1,913.8	3.00	-3.00	
7,131.9	11.84	133.55	6,855.0	-1,318.8	1,396.3	1,920.6	3.00	-3.00	OHIO_CREEK
7,200.0	9.80	133.55	6,921.9	-1,327.6	1,405.6	1,933.4	3.00	-3.00	
7,300.0	6.80	133.55	7,020.8	-1,337.5	1,416.0	1,947.9	3.00	-3.00	
7,400.0	3.80	133.55	7,120.4	-1,343.9	1,422.7	1,957.1	3.00	-3.00	
7,500.0	0.80	133.55	7,220.3	-1,346.7	1,425.6	1,961.1	3.00	-3.00	
7,526.7	0.00	0.00	7,247.0	-1,346.8	1,425.8	1,961.3	3.00	-3.00	Start 2738.0 hold at 7526.7 MD
7,597.7	0.00	0.00	7,318.0	-1,346.8	1,425.8	1,961.3	0.00	0.00	WILLIAMS_FORK
7,600.0	0.00	0.00	7,320.3	-1,346.8	1,425.8	1,961.3	0.00	0.00	
7,700.0	0.00	0.00	7,420.3	-1,346.8	1,425.8	1,961.3	0.00	0.00	
7,800.0	0.00	0.00	7,520.3	-1,346.8	1,425.8	1,961.3	0.00	0.00	
7,900.0	0.00	0.00	7,620.3	-1,346.8	1,425.8	1,961.3	0.00	0.00	
8,000.0	0.00	0.00	7,720.3	-1,346.8	1,425.8	1,961.3	0.00	0.00	
8,100.0	0.00	0.00	7,820.3	-1,346.8	1,425.8	1,961.3	0.00	0.00	
8,200.0	0.00	0.00	7,920.3	-1,346.8	1,425.8	1,961.3	0.00	0.00	
8,271.7	0.00	0.00	7,992.0	-1,346.8	1,425.8	1,961.3	0.00	0.00	TOP_GAS
8,300.0	0.00	0.00	8,020.3	-1,346.8	1,425.8	1,961.3	0.00	0.00	
8,400.0	0.00	0.00	8,120.3	-1,346.8	1,425.8	1,961.3	0.00	0.00	
8,500.0	0.00	0.00	8,220.3	-1,346.8	1,425.8	1,961.3	0.00	0.00	
8,600.0	0.00	0.00	8,320.3	-1,346.8	1,425.8	1,961.3	0.00	0.00	
8,700.0	0.00	0.00	8,420.3	-1,346.8	1,425.8	1,961.3	0.00	0.00	
8,800.0	0.00	0.00	8,520.3	-1,346.8	1,425.8	1,961.3	0.00	0.00	
8,900.0	0.00	0.00	8,620.3	-1,346.8	1,425.8	1,961.3	0.00	0.00	
9,000.0	0.00	0.00	8,720.3	-1,346.8	1,425.8	1,961.3	0.00	0.00	
9,100.0	0.00	0.00	8,820.3	-1,346.8	1,425.8	1,961.3	0.00	0.00	
9,200.0	0.00	0.00	8,920.3	-1,346.8	1,425.8	1,961.3	0.00	0.00	
9,300.0	0.00	0.00	9,020.3	-1,346.8	1,425.8	1,961.3	0.00	0.00	
9,400.0	0.00	0.00	9,120.3	-1,346.8	1,425.8	1,961.3	0.00	0.00	
9,500.0	0.00	0.00	9,220.3	-1,346.8	1,425.8	1,961.3	0.00	0.00	

Planning Report

Database:	USA EDM 5000 Multi Users DB	Local Co-ordinate Reference:	Well 43A-36-795
Company:	Caerus Oil & Gas	TVD Reference:	KB @ 8902.0usft
Project:	Garfield County, CO (UTM 12N)	MD Reference:	KB @ 8902.0usft
Site:	S36-T7S-R95W (36G)	North Reference:	True
Well:	43A-36-795	Survey Calculation Method:	Minimum Curvature
Wellbore:	OH		
Design:	PLAN #1		

Planned Survey									
Measured Depth (usft)	Inclination (°)	Azimuth (°)	Vertical Depth (usft)	+N/-S (usft)	+E/-W (usft)	Vertical Section (usft)	Dogleg Rate (°/100usft)	Build Rate (°/100u)	Comments / Formations
9,600.0	0.00	0.00	9,320.3	-1,346.8	1,425.8	1,961.3	0.00	0.00	
9,700.0	0.00	0.00	9,420.3	-1,346.8	1,425.8	1,961.3	0.00	0.00	
9,800.0	0.00	0.00	9,520.3	-1,346.8	1,425.8	1,961.3	0.00	0.00	
9,859.7	0.00	0.00	9,580.0	-1,346.8	1,425.8	1,961.3	0.00	0.00	CAMEO
9,900.0	0.00	0.00	9,620.3	-1,346.8	1,425.8	1,961.3	0.00	0.00	
10,000.0	0.00	0.00	9,720.3	-1,346.8	1,425.8	1,961.3	0.00	0.00	
10,100.0	0.00	0.00	9,820.3	-1,346.8	1,425.8	1,961.3	0.00	0.00	
10,114.7	0.00	0.00	9,835.0	-1,346.8	1,425.8	1,961.3	0.00	0.00	ROLLINS
10,200.0	0.00	0.00	9,920.3	-1,346.8	1,425.8	1,961.3	0.00	0.00	
10,264.7	0.00	0.00	9,985.0	-1,346.8	1,425.8	1,961.3	0.00	0.00	TD at 10264.7 - TD

Targets									
Target Name	Dip Angle (°)	Dip Dir. (°)	TVD (usft)	+N/-S (usft)	+E/-W (usft)	Northing (usft)	Easting (usft)	Latitude	Longitude
43A-36-795 PBHL - hit/miss target - Shape - plan hits target center - Circle (radius 50.0)	0.00	0.00	9,985.0	-1,346.8	1,425.8	14,319,335.00	2,506,022.30	39.391941	-107.936483

Formations						
Measured Depth (usft)	Vertical Depth (usft)	Name	Lithology	Dip (°)	Dip Direction (°)	
7,131.9	6,855.0	OHIO_CREEK				
7,597.7	7,318.0	WILLIAMS_FORK				
8,271.7	7,992.0	TOP_GAS				
9,859.7	9,580.0	CAMEO				
10,114.7	9,835.0	ROLLINS				
10,264.7	9,985.0	TD				

Plan Annotations					
Measured Depth (usft)	Vertical Depth (usft)	+N/-S (usft)	+E/-W (usft)	Comment	
140.0	140.0	0.0	0.0	Start Build 3.00	
373.3	372.8	-7.8	11.9	Start DLS 3.00 TFO 17.84	
702.9	694.9	-51.4	63.2	Start 6267.6 hold at 702.9 MD	
6,970.5	6,698.6	-1,291.4	1,367.5	Start Drop -3.00	
7,526.7	7,247.0	-1,346.8	1,425.8	Start 2738.0 hold at 7526.7 MD	
10,264.7	9,985.0	-1,346.8	1,425.8	TD at 10264.7	