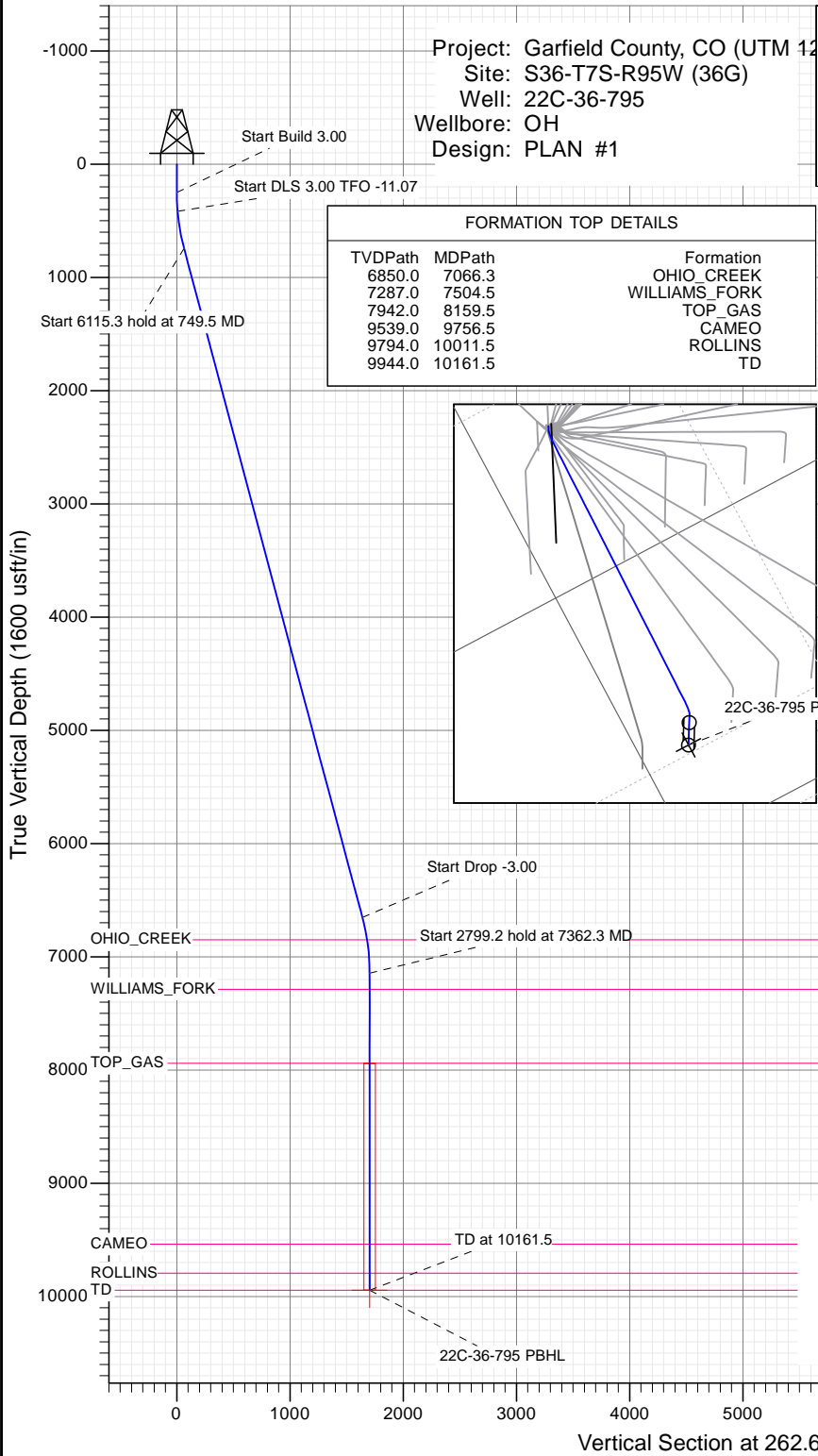




SECTION DETAILS

Sec	MD	Inc	Azi	TVD	+N/-S	+E/-W	Dleg	TFace	Vsect	Target
1	0.0	0.00	0.00	0.0	0.0	0.0	0.00	0.00	0.0	
2	250.0	0.00	0.00	250.0	0.0	0.0	0.00	0.00	0.0	
3	416.7	5.00	270.00	416.5	0.0	-7.3	3.00	270.00	7.2	
4	749.5	14.92	262.57	743.9	-5.6	-64.4	3.00	-11.07	64.6	
5	6864.8	14.92	262.57	6652.9	-209.1	-1626.1	0.00	0.00	1639.5	
6	7362.3	0.00	0.00	7144.8	-217.4	-1689.9	3.00	180.00	1703.9	
7	10161.5	0.00	0.00	9944.0	-217.4	-1689.9	0.00	0.00	1703.9	22C-36-795 PBHL

Project: Garfield County, CO (UTM 12  
 Site: S36-T7S-R95W (36G)  
 Well: 22C-36-795  
 Wellbore: OH  
 Design: PLAN #1

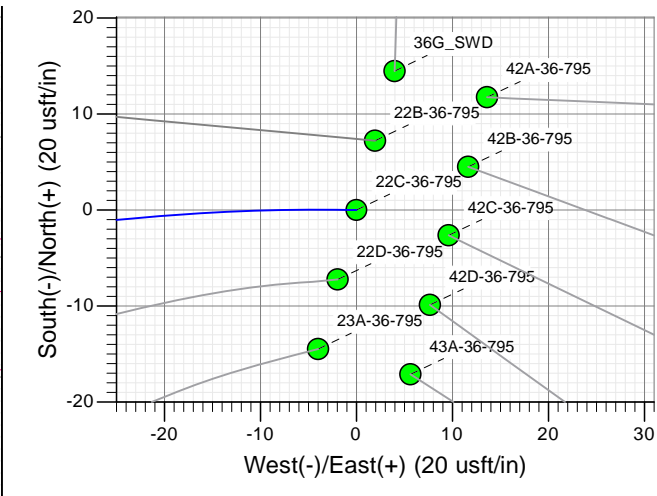
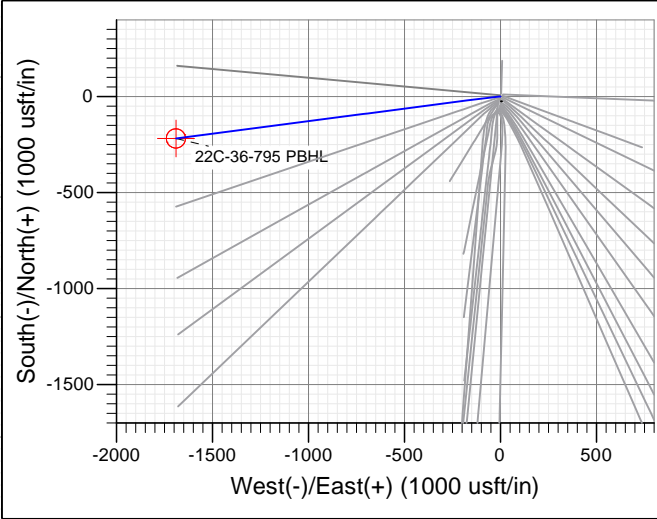


FORMATION TOP DETAILS

TVDPath	MDPath	Formation
6850.0	7066.3	OHIO_CREEK
7287.0	7504.5	WILLIAMS_FORK
7942.0	8159.5	TOP_GAS
9539.0	9756.5	CAMEO
9794.0	10011.5	ROLLINS
9944.0	10161.5	TD

PLAN #1  
 22C-36-795  
 15XXX LR  
 KB @ 8922.0usft  
 Ground Level @ 8872.0  
 NAD 1927 - Western US  
 Well 22C-36-795, True North

Name	Type	Target	No Target (Freehand)	Azimuth	Origin Type	N/S	E/W	From TVD
22C-36-795 PBHL	TD			262.67	Slot	0.0	0.0	0.0



TM  
 Azimuths to True North  
 Magnetic North: 9.40°  
 Magnetic Field  
 Strength: 51872.9snT  
 Dip Angle: 65.60°  
 Date: 12/28/2015  
 Model: HDGM

CASING DETAILS  
 No casing data is available



WELL DETAILS: 22C-36-795

+N/-S	+E/-W	Northing	Ground Level:	8872.0	Easting	Latitude	Longitude
0.0	0.0	14320649.60	2504545.50	39.395684	-107.941545		



## Planning Report

<b>Database:</b>	USA EDM 5000 Multi Users DB	<b>Local Co-ordinate Reference:</b>	Well 22C-36-795
<b>Company:</b>	Caerus Oil & Gas	<b>TVD Reference:</b>	KB @ 8902.0usft
<b>Project:</b>	Garfield County, CO (UTM 12N)	<b>MD Reference:</b>	KB @ 8902.0usft
<b>Site:</b>	S36-T7S-R95W (36G)	<b>North Reference:</b>	True
<b>Well:</b>	22C-36-795	<b>Survey Calculation Method:</b>	Minimum Curvature
<b>Wellbore:</b>	OH		
<b>Design:</b>	PLAN #1		

<b>Project</b>	Garfield County, CO (UTM 12N)		
<b>Map System:</b>	Universal Transverse Mercator (US Survey Feet)	<b>System Datum:</b>	Mean Sea Level
<b>Geo Datum:</b>	NAD 1927 - Western US		
<b>Map Zone:</b>	Zone 12N (114 W to 108 W)		

<b>Site</b>	S36-T7S-R95W (36G)				
<b>Site Position:</b>		<b>Northing:</b>	14,320,581.60 usft	<b>Latitude:</b>	39.395498
<b>From:</b>	Map	<b>Easting:</b>	2,504,539.60 usft	<b>Longitude:</b>	-107.941574
<b>Position Uncertainty:</b>	0.0 usft	<b>Slot Radius:</b>	13-3/16"	<b>Grid Convergence:</b>	1.94 °

<b>Well</b>	22C-36-795					
<b>Well Position</b>	<b>+N/-S</b>	0.0 usft	<b>Northing:</b>	14,320,649.60 usft	<b>Latitude:</b>	39.395684
	<b>+E/-W</b>	0.0 usft	<b>Easting:</b>	2,504,545.50 usft	<b>Longitude:</b>	-107.941545
<b>Position Uncertainty</b>		0.0 usft	<b>Wellhead Elevation:</b>	0.0 usft	<b>Ground Level:</b>	8,872.0 usft

<b>Wellbore</b>	OH				
<b>Magnetics</b>	<b>Model Name</b>	<b>Sample Date</b>	<b>Declination</b>	<b>Dip Angle</b>	<b>Field Strength</b>
			(°)	(°)	(nT)
	HDGM	12/28/2015	9.40	65.60	51,873

<b>Design</b>	PLAN #1			
<b>Audit Notes:</b>				
<b>Version:</b>	<b>Phase:</b>	PLAN	<b>Tie On Depth:</b>	0.0
<b>Vertical Section:</b>	<b>Depth From (TVD)</b>	<b>+N/-S</b>	<b>+E/-W</b>	<b>Direction</b>
	(usft)	(usft)	(usft)	(°)
	0.0	0.0	0.0	262.67

Plan Sections										
Measured Depth (usft)	Inclination (°)	Azimuth (°)	Vertical Depth (usft)	+N/-S (usft)	+E/-W (usft)	Dogleg Rate (°/100usft)	Build Rate (°/100usft)	Turn Rate (°/100usft)	TFO (°)	Target
0.0	0.00	0.00	0.0	0.0	0.0	0.00	0.00	0.00	0.00	
250.0	0.00	0.00	250.0	0.0	0.0	0.00	0.00	0.00	0.00	
416.7	5.00	270.00	416.5	0.0	-7.3	3.00	3.00	0.00	270.00	
749.5	14.92	262.57	743.9	-5.6	-64.4	3.00	2.98	-2.23	-11.07	
6,864.8	14.92	262.57	6,652.9	-209.1	-1,626.1	0.00	0.00	0.00	0.00	
7,362.3	0.00	0.00	7,144.8	-217.4	-1,689.9	3.00	-3.00	0.00	180.00	
10,161.5	0.00	0.00	9,944.0	-217.4	-1,689.9	0.00	0.00	0.00	0.00	22C-36-795 PBHL

## Planning Report

<b>Database:</b>	USA EDM 5000 Multi Users DB	<b>Local Co-ordinate Reference:</b>	Well 22C-36-795
<b>Company:</b>	Caerus Oil & Gas	<b>TVD Reference:</b>	KB @ 8902.0usft
<b>Project:</b>	Garfield County, CO (UTM 12N)	<b>MD Reference:</b>	KB @ 8902.0usft
<b>Site:</b>	S36-T7S-R95W (36G)	<b>North Reference:</b>	True
<b>Well:</b>	22C-36-795	<b>Survey Calculation Method:</b>	Minimum Curvature
<b>Wellbore:</b>	OH		
<b>Design:</b>	PLAN #1		

Planned Survey									
Measured Depth (usft)	Inclination (°)	Azimuth (°)	Vertical Depth (usft)	+N/-S (usft)	+E/-W (usft)	Vertical Section (usft)	Dogleg Rate (°/100usft)	Build Rate (°/100u)	Comments / Formations
0.0	0.00	0.00	0.0	0.0	0.0	0.0	0.00	0.00	
100.0	0.00	0.00	100.0	0.0	0.0	0.0	0.00	0.00	
200.0	0.00	0.00	200.0	0.0	0.0	0.0	0.00	0.00	
250.0	0.00	0.00	250.0	0.0	0.0	0.0	0.00	0.00	Start Build 3.00
300.0	1.50	270.00	300.0	0.0	-0.7	0.6	3.00	3.00	
400.0	4.50	270.00	399.8	0.0	-5.9	5.8	3.00	3.00	
416.7	5.00	270.00	416.5	0.0	-7.3	7.2	3.00	3.00	Start DLS 3.00 TFO -11.07
500.0	7.47	266.31	499.3	-0.3	-16.3	16.2	3.00	2.96	
600.0	10.45	264.18	598.1	-1.7	-31.8	31.8	3.00	2.98	
700.0	13.44	262.99	695.9	-4.0	-52.4	52.5	3.00	2.99	
749.5	14.92	262.57	743.9	-5.6	-64.4	64.6	3.00	2.99	Start 6115.3 hold at 749.5 MD
800.0	14.92	262.57	792.7	-7.2	-77.3	77.6	0.00	0.00	
900.0	14.92	262.57	889.3	-10.6	-102.8	103.4	0.00	0.00	
1,000.0	14.92	262.57	985.9	-13.9	-128.4	129.1	0.00	0.00	
1,100.0	14.92	262.57	1,082.5	-17.2	-153.9	154.9	0.00	0.00	
1,200.0	14.92	262.57	1,179.2	-20.5	-179.5	180.6	0.00	0.00	
1,300.0	14.92	262.57	1,275.8	-23.9	-205.0	206.4	0.00	0.00	
1,400.0	14.92	262.57	1,372.4	-27.2	-230.5	232.1	0.00	0.00	
1,500.0	14.92	262.57	1,469.1	-30.5	-256.1	257.9	0.00	0.00	
1,600.0	14.92	262.57	1,565.7	-33.9	-281.6	283.6	0.00	0.00	
1,700.0	14.92	262.57	1,662.3	-37.2	-307.1	309.4	0.00	0.00	
1,800.0	14.92	262.57	1,758.9	-40.5	-332.7	335.1	0.00	0.00	
1,900.0	14.92	262.57	1,855.6	-43.9	-358.2	360.9	0.00	0.00	
2,000.0	14.92	262.57	1,952.2	-47.2	-383.7	386.6	0.00	0.00	
2,100.0	14.92	262.57	2,048.8	-50.5	-409.3	412.4	0.00	0.00	
2,200.0	14.92	262.57	2,145.4	-53.8	-434.8	438.1	0.00	0.00	
2,300.0	14.92	262.57	2,242.1	-57.2	-460.4	463.9	0.00	0.00	
2,400.0	14.92	262.57	2,338.7	-60.5	-485.9	489.6	0.00	0.00	
2,500.0	14.92	262.57	2,435.3	-63.8	-511.4	515.4	0.00	0.00	
2,600.0	14.92	262.57	2,532.0	-67.2	-537.0	541.1	0.00	0.00	
2,700.0	14.92	262.57	2,628.6	-70.5	-562.5	566.9	0.00	0.00	
2,800.0	14.92	262.57	2,725.2	-73.8	-588.0	592.7	0.00	0.00	
2,900.0	14.92	262.57	2,821.8	-77.1	-613.6	618.4	0.00	0.00	
3,000.0	14.92	262.57	2,918.5	-80.5	-639.1	644.2	0.00	0.00	
3,100.0	14.92	262.57	3,015.1	-83.8	-664.7	669.9	0.00	0.00	
3,200.0	14.92	262.57	3,111.7	-87.1	-690.2	695.7	0.00	0.00	
3,300.0	14.92	262.57	3,208.3	-90.5	-715.7	721.4	0.00	0.00	
3,400.0	14.92	262.57	3,305.0	-93.8	-741.3	747.2	0.00	0.00	
3,500.0	14.92	262.57	3,401.6	-97.1	-766.8	772.9	0.00	0.00	
3,600.0	14.92	262.57	3,498.2	-100.4	-792.3	798.7	0.00	0.00	
3,700.0	14.92	262.57	3,594.9	-103.8	-817.9	824.4	0.00	0.00	
3,800.0	14.92	262.57	3,691.5	-107.1	-843.4	850.2	0.00	0.00	
3,900.0	14.92	262.57	3,788.1	-110.4	-868.9	875.9	0.00	0.00	
4,000.0	14.92	262.57	3,884.7	-113.8	-894.5	901.7	0.00	0.00	
4,100.0	14.92	262.57	3,981.4	-117.1	-920.0	927.4	0.00	0.00	
4,200.0	14.92	262.57	4,078.0	-120.4	-945.6	953.2	0.00	0.00	
4,300.0	14.92	262.57	4,174.6	-123.7	-971.1	978.9	0.00	0.00	
4,400.0	14.92	262.57	4,271.2	-127.1	-996.6	1,004.7	0.00	0.00	
4,500.0	14.92	262.57	4,367.9	-130.4	-1,022.2	1,030.5	0.00	0.00	
4,600.0	14.92	262.57	4,464.5	-133.7	-1,047.7	1,056.2	0.00	0.00	
4,700.0	14.92	262.57	4,561.1	-137.1	-1,073.2	1,082.0	0.00	0.00	
4,800.0	14.92	262.57	4,657.8	-140.4	-1,098.8	1,107.7	0.00	0.00	

## Planning Report

<b>Database:</b>	USA EDM 5000 Multi Users DB	<b>Local Co-ordinate Reference:</b>	Well 22C-36-795
<b>Company:</b>	Caerus Oil & Gas	<b>TVD Reference:</b>	KB @ 8902.0usft
<b>Project:</b>	Garfield County, CO (UTM 12N)	<b>MD Reference:</b>	KB @ 8902.0usft
<b>Site:</b>	S36-T7S-R95W (36G)	<b>North Reference:</b>	True
<b>Well:</b>	22C-36-795	<b>Survey Calculation Method:</b>	Minimum Curvature
<b>Wellbore:</b>	OH		
<b>Design:</b>	PLAN #1		

Planned Survey									
Measured Depth (usft)	Inclination (°)	Azimuth (°)	Vertical Depth (usft)	+N/-S (usft)	+E/-W (usft)	Vertical Section (usft)	Dogleg Rate (°/100usft)	Build Rate (°/100u)	Comments / Formations
4,900.0	14.92	262.57	4,754.4	-143.7	-1,124.3	1,133.5	0.00	0.00	
5,000.0	14.92	262.57	4,851.0	-147.0	-1,149.9	1,159.2	0.00	0.00	
5,100.0	14.92	262.57	4,947.6	-150.4	-1,175.4	1,185.0	0.00	0.00	
5,200.0	14.92	262.57	5,044.3	-153.7	-1,200.9	1,210.7	0.00	0.00	
5,300.0	14.92	262.57	5,140.9	-157.0	-1,226.5	1,236.5	0.00	0.00	
5,400.0	14.92	262.57	5,237.5	-160.4	-1,252.0	1,262.2	0.00	0.00	
5,500.0	14.92	262.57	5,334.1	-163.7	-1,277.5	1,288.0	0.00	0.00	
5,600.0	14.92	262.57	5,430.8	-167.0	-1,303.1	1,313.7	0.00	0.00	
5,700.0	14.92	262.57	5,527.4	-170.3	-1,328.6	1,339.5	0.00	0.00	
5,800.0	14.92	262.57	5,624.0	-173.7	-1,354.1	1,365.2	0.00	0.00	
5,900.0	14.92	262.57	5,720.7	-177.0	-1,379.7	1,391.0	0.00	0.00	
6,000.0	14.92	262.57	5,817.3	-180.3	-1,405.2	1,416.7	0.00	0.00	
6,100.0	14.92	262.57	5,913.9	-183.7	-1,430.8	1,442.5	0.00	0.00	
6,200.0	14.92	262.57	6,010.5	-187.0	-1,456.3	1,468.2	0.00	0.00	
6,300.0	14.92	262.57	6,107.2	-190.3	-1,481.8	1,494.0	0.00	0.00	
6,400.0	14.92	262.57	6,203.8	-193.6	-1,507.4	1,519.8	0.00	0.00	
6,500.0	14.92	262.57	6,300.4	-197.0	-1,532.9	1,545.5	0.00	0.00	
6,600.0	14.92	262.57	6,397.0	-200.3	-1,558.4	1,571.3	0.00	0.00	
6,700.0	14.92	262.57	6,493.7	-203.6	-1,584.0	1,597.0	0.00	0.00	
6,800.0	14.92	262.57	6,590.3	-207.0	-1,609.5	1,622.8	0.00	0.00	
6,864.8	14.92	262.57	6,652.9	-209.1	-1,626.1	1,639.5	0.00	0.00	Start Drop -3.00
6,900.0	13.87	262.57	6,687.0	-210.3	-1,634.7	1,648.2	3.00	-3.00	
7,000.0	10.87	262.57	6,784.7	-213.0	-1,656.0	1,669.6	3.00	-3.00	
7,066.3	8.88	262.57	6,850.0	-214.5	-1,667.2	1,681.0	3.00	-3.00	OHIO_CREEK
7,100.0	7.87	262.57	6,883.3	-215.1	-1,672.1	1,685.9	3.00	-3.00	
7,200.0	4.87	262.57	6,982.7	-216.6	-1,683.1	1,697.0	3.00	-3.00	
7,300.0	1.87	262.57	7,082.5	-217.3	-1,688.9	1,702.9	3.00	-3.00	
7,362.3	0.00	0.00	7,144.8	-217.4	-1,689.9	1,703.9	3.00	-3.00	Start 2799.2 hold at 7362.3 MD
7,400.0	0.00	0.00	7,182.5	-217.4	-1,689.9	1,703.9	0.00	0.00	
7,500.0	0.00	0.00	7,282.5	-217.4	-1,689.9	1,703.9	0.00	0.00	
7,504.5	0.00	0.00	7,287.0	-217.4	-1,689.9	1,703.9	0.00	0.00	WILLIAMS_FORK
7,600.0	0.00	0.00	7,382.5	-217.4	-1,689.9	1,703.9	0.00	0.00	
7,700.0	0.00	0.00	7,482.5	-217.4	-1,689.9	1,703.9	0.00	0.00	
7,800.0	0.00	0.00	7,582.5	-217.4	-1,689.9	1,703.9	0.00	0.00	
7,900.0	0.00	0.00	7,682.5	-217.4	-1,689.9	1,703.9	0.00	0.00	
8,000.0	0.00	0.00	7,782.5	-217.4	-1,689.9	1,703.9	0.00	0.00	
8,100.0	0.00	0.00	7,882.5	-217.4	-1,689.9	1,703.9	0.00	0.00	
8,159.5	0.00	0.00	7,942.0	-217.4	-1,689.9	1,703.9	0.00	0.00	TOP_GAS
8,200.0	0.00	0.00	7,982.5	-217.4	-1,689.9	1,703.9	0.00	0.00	
8,300.0	0.00	0.00	8,082.5	-217.4	-1,689.9	1,703.9	0.00	0.00	
8,400.0	0.00	0.00	8,182.5	-217.4	-1,689.9	1,703.9	0.00	0.00	
8,500.0	0.00	0.00	8,282.5	-217.4	-1,689.9	1,703.9	0.00	0.00	
8,600.0	0.00	0.00	8,382.5	-217.4	-1,689.9	1,703.9	0.00	0.00	
8,700.0	0.00	0.00	8,482.5	-217.4	-1,689.9	1,703.9	0.00	0.00	
8,800.0	0.00	0.00	8,582.5	-217.4	-1,689.9	1,703.9	0.00	0.00	
8,900.0	0.00	0.00	8,682.5	-217.4	-1,689.9	1,703.9	0.00	0.00	
9,000.0	0.00	0.00	8,782.5	-217.4	-1,689.9	1,703.9	0.00	0.00	
9,100.0	0.00	0.00	8,882.5	-217.4	-1,689.9	1,703.9	0.00	0.00	
9,200.0	0.00	0.00	8,982.5	-217.4	-1,689.9	1,703.9	0.00	0.00	
9,300.0	0.00	0.00	9,082.5	-217.4	-1,689.9	1,703.9	0.00	0.00	
9,400.0	0.00	0.00	9,182.5	-217.4	-1,689.9	1,703.9	0.00	0.00	
9,500.0	0.00	0.00	9,282.5	-217.4	-1,689.9	1,703.9	0.00	0.00	

## Planning Report

<b>Database:</b>	USA EDM 5000 Multi Users DB	<b>Local Co-ordinate Reference:</b>	Well 22C-36-795
<b>Company:</b>	Caerus Oil & Gas	<b>TVD Reference:</b>	KB @ 8902.0usft
<b>Project:</b>	Garfield County, CO (UTM 12N)	<b>MD Reference:</b>	KB @ 8902.0usft
<b>Site:</b>	S36-T7S-R95W (36G)	<b>North Reference:</b>	True
<b>Well:</b>	22C-36-795	<b>Survey Calculation Method:</b>	Minimum Curvature
<b>Wellbore:</b>	OH		
<b>Design:</b>	PLAN #1		

Planned Survey									
Measured Depth (usft)	Inclination (°)	Azimuth (°)	Vertical Depth (usft)	+N/-S (usft)	+E/-W (usft)	Vertical Section (usft)	Dogleg Rate (°/100usft)	Build Rate (°/100u)	Comments / Formations
9,600.0	0.00	0.00	9,382.5	-217.4	-1,689.9	1,703.9	0.00	0.00	
9,700.0	0.00	0.00	9,482.5	-217.4	-1,689.9	1,703.9	0.00	0.00	
9,756.5	0.00	0.00	9,539.0	-217.4	-1,689.9	1,703.9	0.00	0.00	CAMEO
9,800.0	0.00	0.00	9,582.5	-217.4	-1,689.9	1,703.9	0.00	0.00	
9,900.0	0.00	0.00	9,682.5	-217.4	-1,689.9	1,703.9	0.00	0.00	
10,000.0	0.00	0.00	9,782.5	-217.4	-1,689.9	1,703.9	0.00	0.00	
10,011.5	0.00	0.00	9,794.0	-217.4	-1,689.9	1,703.9	0.00	0.00	ROLLINS
10,100.0	0.00	0.00	9,882.5	-217.4	-1,689.9	1,703.9	0.00	0.00	
10,161.5	0.00	0.00	9,944.0	-217.4	-1,689.9	1,703.9	0.00	0.00	TD at 10161.5 - TD

Targets										
Target Name	- hit/miss target	Dip Angle (°)	Dip Dir. (°)	TVD (usft)	+N/-S (usft)	+E/-W (usft)	Northing (usft)	Easting (usft)	Latitude	Longitude
22C-36-795 PBHL		0.00	0.00	9,944.0	-217.4	-1,689.9	14,320,375.00	2,502,863.90	39.395087	-107.947522
	- plan hits target center									
	- Circle (radius 50.0)									

Formations						
Measured Depth (usft)	Vertical Depth (usft)	Name	Lithology	Dip (°)	Dip Direction (°)	
7,066.3	6,850.0	OHIO_CREEK				
7,504.5	7,287.0	WILLIAMS_FORK				
8,159.5	7,942.0	TOP_GAS				
9,756.5	9,539.0	CAMEO				
10,011.5	9,794.0	ROLLINS				
10,161.5	9,944.0	TD				

Plan Annotations					
Measured Depth (usft)	Vertical Depth (usft)	Local Coordinates		Comment	
		+N/-S (usft)	+E/-W (usft)		
250.0	250.0	0.0	0.0	Start Build 3.00	
416.7	416.5	0.0	-7.3	Start DLS 3.00 TFO -11.07	
749.5	743.9	-5.6	-64.4	Start 6115.3 hold at 749.5 MD	
6,864.8	6,652.9	-209.1	-1,626.1	Start Drop -3.00	
7,362.3	7,144.8	-217.4	-1,689.9	Start 2799.2 hold at 7362.3 MD	
10,161.5	9,944.0	-217.4	-1,689.9	TD at 10161.5	