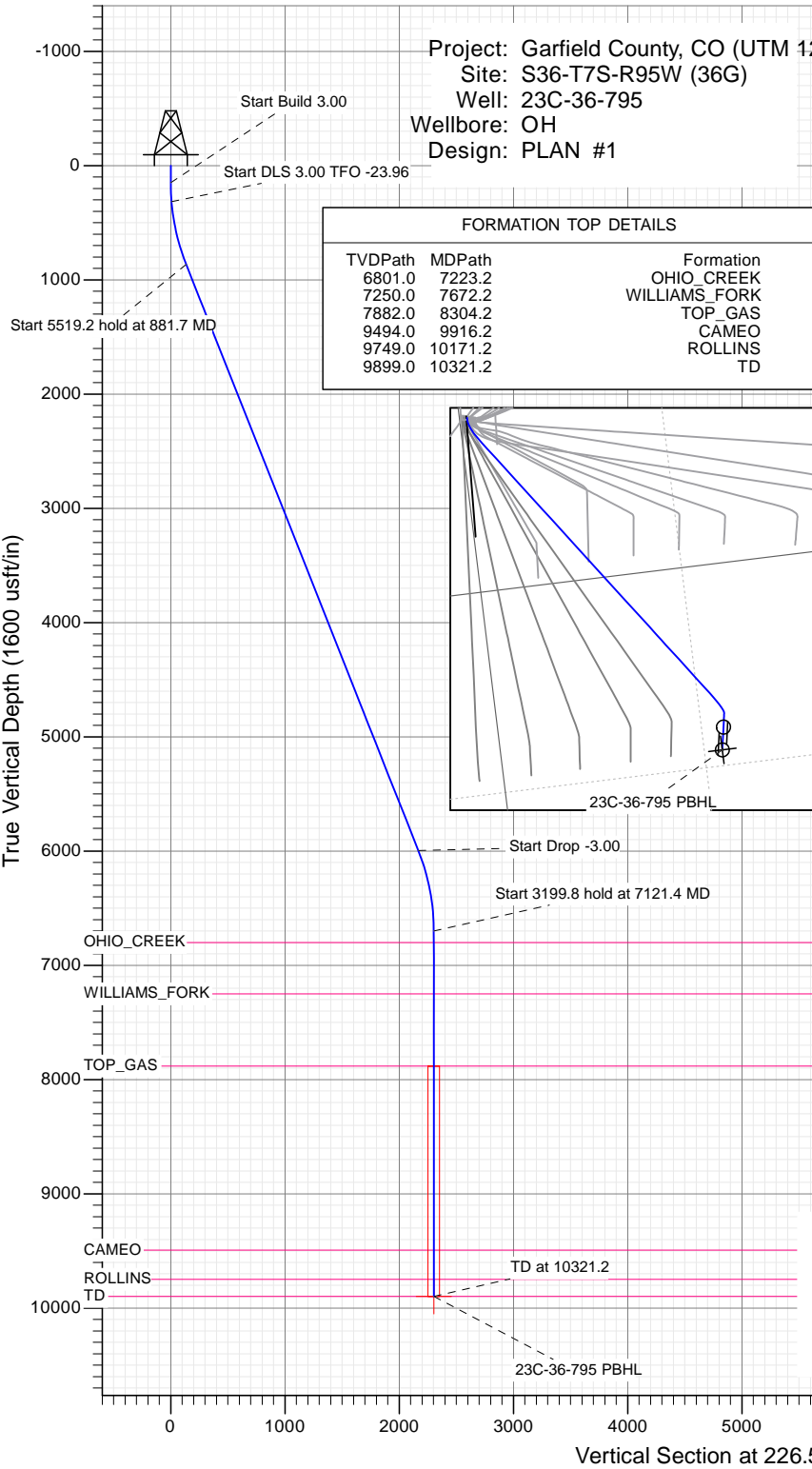




SECTION DETAILS

Sec	MD	Inc	Azi	TVD	+N/-S	+E/-W	Dleg	TFace	Vsect	Target
1	0.0	0.00	0.00	0.0	0.0	0.0	0.00	0.00	0.0	
2	150.0	0.00	0.00	150.0	0.0	0.0	0.00	0.00	0.0	
3	316.7	5.00	245.00	316.5	-3.1	-6.6	3.00	245.00	6.9	
4	881.7	21.61	226.25	864.6	-86.0	-104.8	3.00	-23.96	135.2	
5	6401.0	21.61	226.25	5995.8	-1491.8	-1573.4	0.00	0.00	2168.2	
6	7121.4	0.00	0.00	6699.2	-1584.7	-1670.4	3.00	180.00	2302.5	
7	10321.2	0.00	0.00	9899.0	-1584.7	-1670.4	0.00	0.00	2302.5	23C-36-795 PBHL

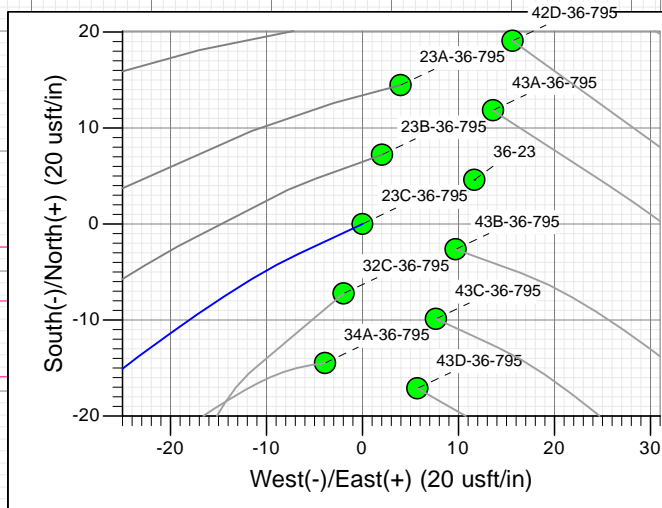
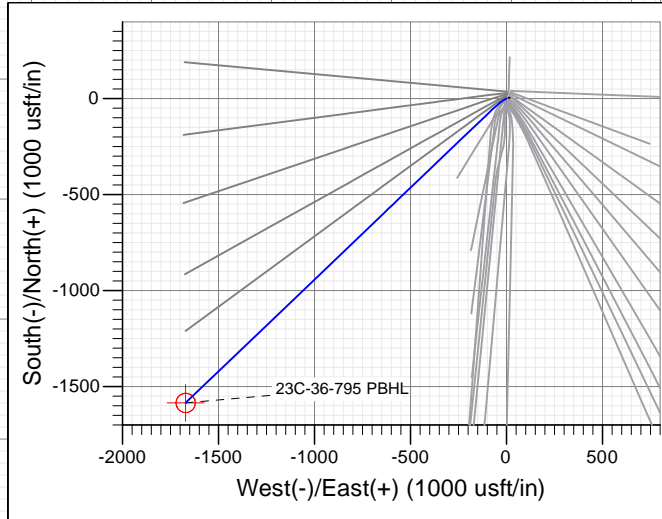


FORMATION TOP DETAILS

TVDPATH	MDPATH	FORMATION
6801.0	7223.2	OHIO_CREEK
7250.0	7672.2	WILLIAMS_FORK
7882.0	8304.2	TOP_GAS
9494.0	9916.2	CAMEO
9749.0	10171.2	ROLLINS
9899.0	10321.2	TD

PLAN #1
23C-36-795
15XXX LR
KB @ 8922.0usft
Ground Level @ 8872.0
NAD 1927 - Western US
Well 23C-36-795, True North

Type	Target	TD	Target No Target (Freehand)	Azimuth	Origin Type	N/S	E/W	From TVD			
Name	23C-36-795 PBHL	TVDP	9899.0	+N/-S	-1584.7	+E/-W	-1670.4	Latitude	39.391256	Longitude	-107.947480



T M
 Azimuths to True North
 Magnetic North: 9.40°
 Magnetic Field
 Strength: 51872.9snT
 Dip Angle: 65.60°
 Date: 12/28/2015
 Model: HDGM

CASING DETAILS

No casing data is available



WELL DETAILS: 23C-36-795

Ground Level: 8872.0

+N/-S	+E/-W	Northing	Easting	Latitude	Longitude
0.0	0.0	14320620.40	2504538.50	39.395605	-107.941573

Planning Report

Database: USA EDM 5000 Multi Users DB	Local Co-ordinate Reference: Well 23C-36-795
Company: Caerus Oil & Gas	TVD Reference: KB @ 8902.0usft
Project: Garfield County, CO (UTM 12N)	MD Reference: KB @ 8902.0usft
Site: S36-T7S-R95W (36G)	North Reference: True
Well: 23C-36-795	Survey Calculation Method: Minimum Curvature
Wellbore: OH	
Design: PLAN #1	

Project Garfield County, CO (UTM 12N)			
Map System: Universal Transverse Mercator (US Survey Feet)	System Datum: Mean Sea Level		
Geo Datum: NAD 1927 - Western US			
Map Zone: Zone 12N (114 W to 108 W)			

Site S36-T7S-R95W (36G)			
Site Position:	Northing: 14,320,581.60 usft	Latitude: 39.395498	
From: Map	Easting: 2,504,539.60 usft	Longitude: -107.941574	
Position Uncertainty: 0.0 usft	Slot Radius: 13-3/16"	Grid Convergence: 1.94 °	

Well 23C-36-795			
Well Position	+N/-S 0.0 usft	Northing: 14,320,620.40 usft	Latitude: 39.395605
	+E/-W 0.0 usft	Easting: 2,504,538.50 usft	Longitude: -107.941573
Position Uncertainty	0.0 usft	Wellhead Elevation: 0.0 usft	Ground Level: 8,872.0 usft

Wellbore OH					
Magnetics	Model Name	Sample Date	Declination (°)	Dip Angle (°)	Field Strength (nT)
	HDGM	12/28/2015	9.40	65.60	51,873

Design PLAN #1				
Audit Notes:				
Version:	Phase: PLAN	Tie On Depth: 0.0		
Vertical Section:	Depth From (TVD) (usft)	+N/-S (usft)	+E/-W (usft)	Direction (°)
	0.0	0.0	0.0	226.51

Plan Sections										
Measured Depth (usft)	Inclination (°)	Azimuth (°)	Vertical Depth (usft)	+N/-S (usft)	+E/-W (usft)	Dogleg Rate (°/100usft)	Build Rate (°/100usft)	Turn Rate (°/100usft)	TFO (°)	Target
0.0	0.00	0.00	0.0	0.0	0.0	0.00	0.00	0.00	0.00	
150.0	0.00	0.00	150.0	0.0	0.0	0.00	0.00	0.00	0.00	
316.7	5.00	245.00	316.5	-3.1	-6.6	3.00	3.00	0.00	245.00	
881.7	21.61	226.25	864.6	-86.0	-104.8	3.00	2.94	-3.32	-23.96	
6,401.0	21.61	226.25	5,995.8	-1,491.8	-1,573.4	0.00	0.00	0.00	0.00	
7,121.4	0.00	0.00	6,699.2	-1,584.7	-1,670.4	3.00	-3.00	0.00	180.00	
10,321.2	0.00	0.00	9,899.0	-1,584.7	-1,670.4	0.00	0.00	0.00	0.00	23C-36-795 PBHL

Planning Report

Database:	USA EDM 5000 Multi Users DB	Local Co-ordinate Reference:	Well 23C-36-795
Company:	Caerus Oil & Gas	TVD Reference:	KB @ 8902.0usft
Project:	Garfield County, CO (UTM 12N)	MD Reference:	KB @ 8902.0usft
Site:	S36-T7S-R95W (36G)	North Reference:	True
Well:	23C-36-795	Survey Calculation Method:	Minimum Curvature
Wellbore:	OH		
Design:	PLAN #1		

Planned Survey									
Measured Depth (usft)	Inclination (°)	Azimuth (°)	Vertical Depth (usft)	+N/-S (usft)	+E/-W (usft)	Vertical Section (usft)	Dogleg Rate (°/100usft)	Build Rate (°/100u)	Comments / Formations
0.0	0.00	0.00	0.0	0.0	0.0	0.0	0.00	0.00	
100.0	0.00	0.00	100.0	0.0	0.0	0.0	0.00	0.00	
150.0	0.00	0.00	150.0	0.0	0.0	0.0	0.00	0.00	Start Build 3.00
200.0	1.50	245.00	200.0	-0.3	-0.6	0.6	3.00	3.00	
300.0	4.50	245.00	299.8	-2.5	-5.3	5.6	3.00	3.00	
316.7	5.00	245.00	316.5	-3.1	-6.6	6.9	3.00	3.00	Start DLS 3.00 TFO -23.96
400.0	7.35	237.05	399.3	-7.5	-14.4	15.6	3.00	2.83	
500.0	10.27	232.39	498.1	-16.4	-26.8	30.7	3.00	2.92	
600.0	13.22	229.79	596.0	-29.3	-42.6	51.0	3.00	2.95	
700.0	16.20	228.13	692.7	-46.0	-61.7	76.4	3.00	2.97	
800.0	19.17	226.97	788.0	-66.5	-84.1	106.8	3.00	2.98	
881.7	21.61	226.25	864.6	-86.0	-104.8	135.2	3.00	2.98	Start 5519.2 hold at 881.7 MD
900.0	21.61	226.25	881.6	-90.7	-109.7	142.0	0.00	0.00	
1,000.0	21.61	226.25	974.5	-116.2	-136.3	178.8	0.00	0.00	
1,100.0	21.61	226.25	1,067.5	-141.6	-162.9	215.6	0.00	0.00	
1,200.0	21.61	226.25	1,160.5	-167.1	-189.5	252.5	0.00	0.00	
1,300.0	21.61	226.25	1,253.4	-192.6	-216.1	289.3	0.00	0.00	
1,400.0	21.61	226.25	1,346.4	-218.1	-242.7	326.2	0.00	0.00	
1,500.0	21.61	226.25	1,439.4	-243.5	-269.3	363.0	0.00	0.00	
1,600.0	21.61	226.25	1,532.4	-269.0	-295.9	399.8	0.00	0.00	
1,700.0	21.61	226.25	1,625.3	-294.5	-322.5	436.7	0.00	0.00	
1,800.0	21.61	226.25	1,718.3	-319.9	-349.1	473.5	0.00	0.00	
1,900.0	21.61	226.25	1,811.3	-345.4	-375.7	510.3	0.00	0.00	
2,000.0	21.61	226.25	1,904.2	-370.9	-402.4	547.2	0.00	0.00	
2,100.0	21.61	226.25	1,997.2	-396.4	-429.0	584.0	0.00	0.00	
2,200.0	21.61	226.25	2,090.2	-421.8	-455.6	620.8	0.00	0.00	
2,300.0	21.61	226.25	2,183.1	-447.3	-482.2	657.7	0.00	0.00	
2,400.0	21.61	226.25	2,276.1	-472.8	-508.8	694.5	0.00	0.00	
2,500.0	21.61	226.25	2,369.1	-498.2	-535.4	731.3	0.00	0.00	
2,600.0	21.61	226.25	2,462.0	-523.7	-562.0	768.2	0.00	0.00	
2,700.0	21.61	226.25	2,555.0	-549.2	-588.6	805.0	0.00	0.00	
2,800.0	21.61	226.25	2,648.0	-574.6	-615.2	841.8	0.00	0.00	
2,900.0	21.61	226.25	2,740.9	-600.1	-641.8	878.7	0.00	0.00	
3,000.0	21.61	226.25	2,833.9	-625.6	-668.4	915.5	0.00	0.00	
3,100.0	21.61	226.25	2,926.9	-651.1	-695.0	952.3	0.00	0.00	
3,200.0	21.61	226.25	3,019.9	-676.5	-721.6	989.2	0.00	0.00	
3,300.0	21.61	226.25	3,112.8	-702.0	-748.3	1,026.0	0.00	0.00	
3,400.0	21.61	226.25	3,205.8	-727.5	-774.9	1,062.8	0.00	0.00	
3,500.0	21.61	226.25	3,298.8	-752.9	-801.5	1,099.7	0.00	0.00	
3,600.0	21.61	226.25	3,391.7	-778.4	-828.1	1,136.5	0.00	0.00	
3,700.0	21.61	226.25	3,484.7	-803.9	-854.7	1,173.3	0.00	0.00	
3,800.0	21.61	226.25	3,577.7	-829.4	-881.3	1,210.2	0.00	0.00	
3,900.0	21.61	226.25	3,670.6	-854.8	-907.9	1,247.0	0.00	0.00	
4,000.0	21.61	226.25	3,763.6	-880.3	-934.5	1,283.8	0.00	0.00	
4,100.0	21.61	226.25	3,856.6	-905.8	-961.1	1,320.7	0.00	0.00	
4,200.0	21.61	226.25	3,949.5	-931.2	-987.7	1,357.5	0.00	0.00	
4,300.0	21.61	226.25	4,042.5	-956.7	-1,014.3	1,394.3	0.00	0.00	
4,400.0	21.61	226.25	4,135.5	-982.2	-1,040.9	1,431.2	0.00	0.00	
4,500.0	21.61	226.25	4,228.5	-1,007.7	-1,067.6	1,468.0	0.00	0.00	
4,600.0	21.61	226.25	4,321.4	-1,033.1	-1,094.2	1,504.8	0.00	0.00	
4,700.0	21.61	226.25	4,414.4	-1,058.6	-1,120.8	1,541.7	0.00	0.00	
4,800.0	21.61	226.25	4,507.4	-1,084.1	-1,147.4	1,578.5	0.00	0.00	

Planning Report

Database:	USA EDM 5000 Multi Users DB	Local Co-ordinate Reference:	Well 23C-36-795
Company:	Caerus Oil & Gas	TVD Reference:	KB @ 8902.0usft
Project:	Garfield County, CO (UTM 12N)	MD Reference:	KB @ 8902.0usft
Site:	S36-T7S-R95W (36G)	North Reference:	True
Well:	23C-36-795	Survey Calculation Method:	Minimum Curvature
Wellbore:	OH		
Design:	PLAN #1		

Planned Survey									
Measured Depth (usft)	Inclination (°)	Azimuth (°)	Vertical Depth (usft)	+N/-S (usft)	+E/-W (usft)	Vertical Section (usft)	Dogleg Rate (°/100usft)	Build Rate (°/100u)	Comments / Formations
4,900.0	21.61	226.25	4,600.3	-1,109.5	-1,174.0	1,615.3	0.00	0.00	
5,000.0	21.61	226.25	4,693.3	-1,135.0	-1,200.6	1,652.2	0.00	0.00	
5,100.0	21.61	226.25	4,786.3	-1,160.5	-1,227.2	1,689.0	0.00	0.00	
5,200.0	21.61	226.25	4,879.2	-1,185.9	-1,253.8	1,725.8	0.00	0.00	
5,300.0	21.61	226.25	4,972.2	-1,211.4	-1,280.4	1,762.7	0.00	0.00	
5,400.0	21.61	226.25	5,065.2	-1,236.9	-1,307.0	1,799.5	0.00	0.00	
5,500.0	21.61	226.25	5,158.1	-1,262.4	-1,333.6	1,836.3	0.00	0.00	
5,600.0	21.61	226.25	5,251.1	-1,287.8	-1,360.2	1,873.2	0.00	0.00	
5,700.0	21.61	226.25	5,344.1	-1,313.3	-1,386.9	1,910.0	0.00	0.00	
5,800.0	21.61	226.25	5,437.1	-1,338.8	-1,413.5	1,946.8	0.00	0.00	
5,900.0	21.61	226.25	5,530.0	-1,364.2	-1,440.1	1,983.7	0.00	0.00	
6,000.0	21.61	226.25	5,623.0	-1,389.7	-1,466.7	2,020.5	0.00	0.00	
6,100.0	21.61	226.25	5,716.0	-1,415.2	-1,493.3	2,057.3	0.00	0.00	
6,200.0	21.61	226.25	5,808.9	-1,440.7	-1,519.9	2,094.2	0.00	0.00	
6,300.0	21.61	226.25	5,901.9	-1,466.1	-1,546.5	2,131.0	0.00	0.00	
6,400.0	21.61	226.25	5,994.9	-1,491.6	-1,573.1	2,167.8	0.00	0.00	
6,401.0	21.61	226.25	5,995.8	-1,491.8	-1,573.4	2,168.2	0.00	0.00	Start Drop -3.00
6,500.0	18.64	226.25	6,088.7	-1,515.4	-1,598.0	2,202.3	3.00	-3.00	
6,600.0	15.64	226.25	6,184.3	-1,535.8	-1,619.3	2,231.7	3.00	-3.00	
6,700.0	12.64	226.25	6,281.2	-1,552.7	-1,636.9	2,256.2	3.00	-3.00	
6,800.0	9.64	226.25	6,379.3	-1,566.0	-1,650.9	2,275.5	3.00	-3.00	
6,900.0	6.64	226.25	6,478.3	-1,575.8	-1,661.1	2,289.7	3.00	-3.00	
7,000.0	3.64	226.25	6,577.9	-1,582.0	-1,667.6	2,298.6	3.00	-3.00	
7,100.0	0.64	226.25	6,677.8	-1,584.6	-1,670.3	2,302.4	3.00	-3.00	
7,121.4	0.00	0.00	6,699.2	-1,584.7	-1,670.4	2,302.5	3.00	-3.00	Start 3199.8 hold at 7121.4 MD
7,200.0	0.00	0.00	6,777.8	-1,584.7	-1,670.4	2,302.5	0.00	0.00	
7,223.2	0.00	0.00	6,801.0	-1,584.7	-1,670.4	2,302.5	0.00	0.00	OHIO_CREEK
7,300.0	0.00	0.00	6,877.8	-1,584.7	-1,670.4	2,302.5	0.00	0.00	
7,400.0	0.00	0.00	6,977.8	-1,584.7	-1,670.4	2,302.5	0.00	0.00	
7,500.0	0.00	0.00	7,077.8	-1,584.7	-1,670.4	2,302.5	0.00	0.00	
7,600.0	0.00	0.00	7,177.8	-1,584.7	-1,670.4	2,302.5	0.00	0.00	
7,672.2	0.00	0.00	7,250.0	-1,584.7	-1,670.4	2,302.5	0.00	0.00	WILLIAMS_FORK
7,700.0	0.00	0.00	7,277.8	-1,584.7	-1,670.4	2,302.5	0.00	0.00	
7,800.0	0.00	0.00	7,377.8	-1,584.7	-1,670.4	2,302.5	0.00	0.00	
7,900.0	0.00	0.00	7,477.8	-1,584.7	-1,670.4	2,302.5	0.00	0.00	
8,000.0	0.00	0.00	7,577.8	-1,584.7	-1,670.4	2,302.5	0.00	0.00	
8,100.0	0.00	0.00	7,677.8	-1,584.7	-1,670.4	2,302.5	0.00	0.00	
8,200.0	0.00	0.00	7,777.8	-1,584.7	-1,670.4	2,302.5	0.00	0.00	
8,300.0	0.00	0.00	7,877.8	-1,584.7	-1,670.4	2,302.5	0.00	0.00	
8,304.2	0.00	0.00	7,882.0	-1,584.7	-1,670.4	2,302.5	0.00	0.00	TOP_GAS
8,400.0	0.00	0.00	7,977.8	-1,584.7	-1,670.4	2,302.5	0.00	0.00	
8,500.0	0.00	0.00	8,077.8	-1,584.7	-1,670.4	2,302.5	0.00	0.00	
8,600.0	0.00	0.00	8,177.8	-1,584.7	-1,670.4	2,302.5	0.00	0.00	
8,700.0	0.00	0.00	8,277.8	-1,584.7	-1,670.4	2,302.5	0.00	0.00	
8,800.0	0.00	0.00	8,377.8	-1,584.7	-1,670.4	2,302.5	0.00	0.00	
8,900.0	0.00	0.00	8,477.8	-1,584.7	-1,670.4	2,302.5	0.00	0.00	
9,000.0	0.00	0.00	8,577.8	-1,584.7	-1,670.4	2,302.5	0.00	0.00	
9,100.0	0.00	0.00	8,677.8	-1,584.7	-1,670.4	2,302.5	0.00	0.00	
9,200.0	0.00	0.00	8,777.8	-1,584.7	-1,670.4	2,302.5	0.00	0.00	
9,300.0	0.00	0.00	8,877.8	-1,584.7	-1,670.4	2,302.5	0.00	0.00	
9,400.0	0.00	0.00	8,977.8	-1,584.7	-1,670.4	2,302.5	0.00	0.00	
9,500.0	0.00	0.00	9,077.8	-1,584.7	-1,670.4	2,302.5	0.00	0.00	

Planning Report

Database: USA EDM 5000 Multi Users DB	Local Co-ordinate Reference: Well 23C-36-795
Company: Caerus Oil & Gas	TVD Reference: KB @ 8902.0usft
Project: Garfield County, CO (UTM 12N)	MD Reference: KB @ 8902.0usft
Site: S36-T7S-R95W (36G)	North Reference: True
Well: 23C-36-795	Survey Calculation Method: Minimum Curvature
Wellbore: OH	
Design: PLAN #1	

Planned Survey									
Measured Depth (usft)	Inclination (°)	Azimuth (°)	Vertical Depth (usft)	+N/-S (usft)	+E/-W (usft)	Vertical Section (usft)	Dogleg Rate (°/100usft)	Build Rate (°/100u)	Comments / Formations
9,600.0	0.00	0.00	9,177.8	-1,584.7	-1,670.4	2,302.5	0.00	0.00	
9,700.0	0.00	0.00	9,277.8	-1,584.7	-1,670.4	2,302.5	0.00	0.00	
9,800.0	0.00	0.00	9,377.8	-1,584.7	-1,670.4	2,302.5	0.00	0.00	
9,900.0	0.00	0.00	9,477.8	-1,584.7	-1,670.4	2,302.5	0.00	0.00	
9,916.2	0.00	0.00	9,494.0	-1,584.7	-1,670.4	2,302.5	0.00	0.00	CAMEO
10,000.0	0.00	0.00	9,577.8	-1,584.7	-1,670.4	2,302.5	0.00	0.00	
10,100.0	0.00	0.00	9,677.8	-1,584.7	-1,670.4	2,302.5	0.00	0.00	
10,171.2	0.00	0.00	9,749.0	-1,584.7	-1,670.4	2,302.5	0.00	0.00	ROLLINS
10,200.0	0.00	0.00	9,777.8	-1,584.7	-1,670.4	2,302.5	0.00	0.00	
10,300.0	0.00	0.00	9,877.8	-1,584.7	-1,670.4	2,302.5	0.00	0.00	
10,321.2	0.00	0.00	9,899.0	-1,584.7	-1,670.4	2,302.5	0.00	0.00	TD at 10321.2 - TD

Targets									
Target Name	Dip Angle (°)	Dip Dir. (°)	TVD (usft)	+N/-S (usft)	+E/-W (usft)	Northing (usft)	Easting (usft)	Latitude	Longitude
23C-36-795 PBHL - hit/miss target - Shape - plan hits target center - Circle (radius 50.0)	0.00	0.00	9,899.0	-1,584.7	-1,670.4	14,318,980.00	2,502,922.80	39.391256	-107.947480

Formations						
Measured Depth (usft)	Vertical Depth (usft)	Name	Lithology	Dip (°)	Dip Direction (°)	
7,223.2	6,801.0	OHIO_CREEK				
7,672.2	7,250.0	WILLIAMS_FORK				
8,304.2	7,882.0	TOP_GAS				
9,916.2	9,494.0	CAMEO				
10,171.2	9,749.0	ROLLINS				
10,321.2	9,899.0	TD				

Plan Annotations				
Measured Depth (usft)	Vertical Depth (usft)	Local Coordinates		Comment
		+N/-S (usft)	+E/-W (usft)	
150.0	150.0	0.0	0.0	Start Build 3.00
316.7	316.5	-3.1	-6.6	Start DLS 3.00 TFO -23.96
881.7	864.6	-86.0	-104.8	Start 5519.2 hold at 881.7 MD
6,401.0	5,995.8	-1,491.8	-1,573.4	Start Drop -3.00
7,121.4	6,699.2	-1,584.7	-1,670.4	Start 3199.8 hold at 7121.4 MD
10,321.2	9,899.0	-1,584.7	-1,670.4	TD at 10321.2