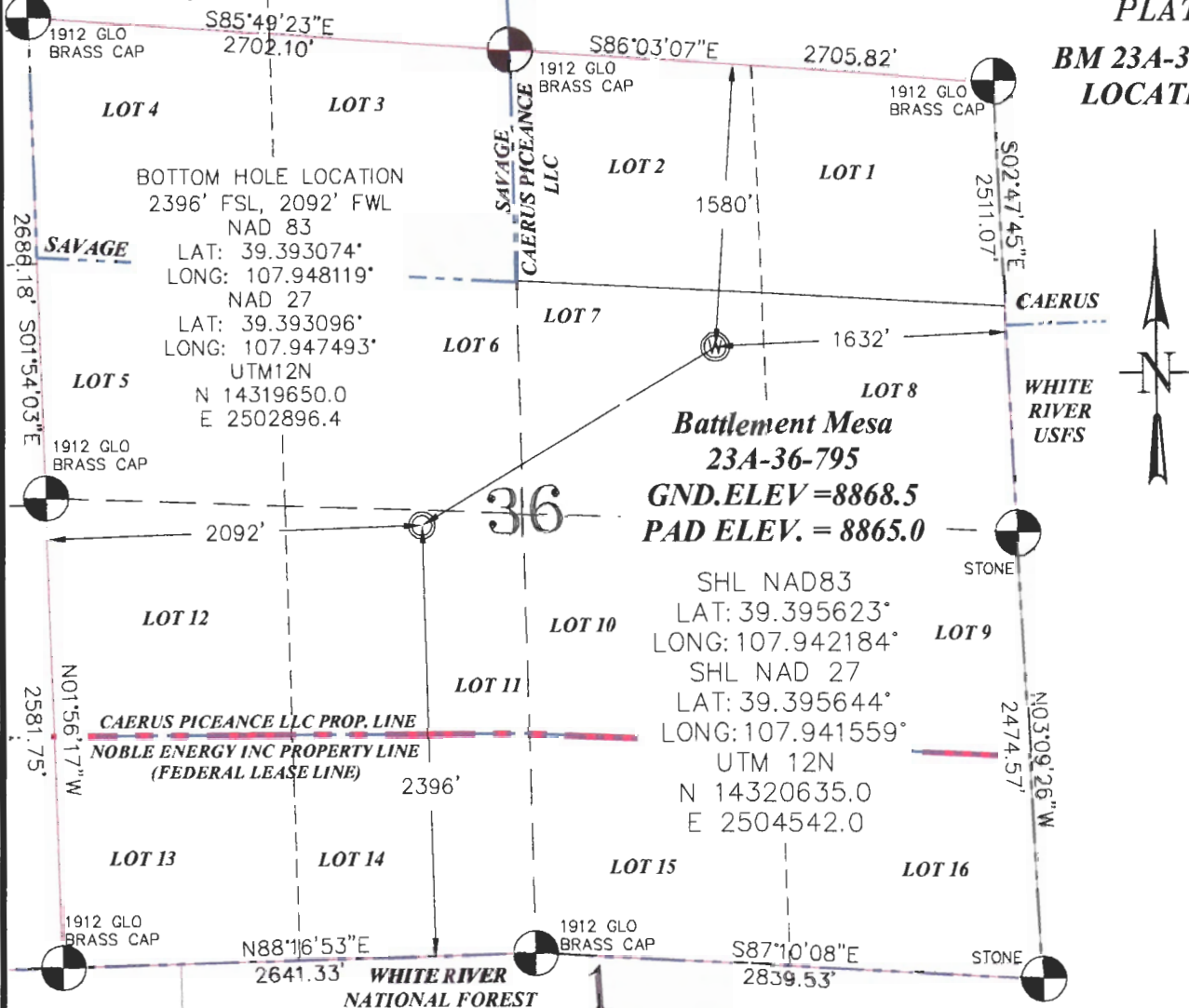


SEC. 36, T. 7 S., R. 95 W. OF THE 6TH P.M.

PLAT 1

BM 23A-36-795
LOCATION



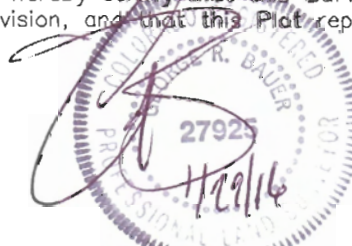
THIS WELL LOCATION PLAT WAS PREPARED FOR CAERUS PICEANCE LLC TO LOCATE THE BATTLEMENT MESA #23A-36-795 WELL, 1580 FEET FROM THE NORTH LINE OF SAID SECTION AND 1632 FEET FROM THE EAST LINE OF LOT 7 (SW1/4NE1/4) OF SECTION 36, T. 7 S., R. 95 W. OF THE 6TH P.M. GARFIELD COUNTY, COLORADO.

REFERENCE NOTES

- 1) T. 7 S., R. 95 W., 6TH P.M. GLO PLAT.
- 2) U.S.G.S. QUAD: PARACHUTE, CO
- 3) ELEVATIONS BASED ON N.A.V.D. 1988 LIDAR BASED CONTROL PT CP MON 8
- 4) LATITUDES AND LONGITUDES ARE BASED ON NAD 83, COLORADO CENTRAL ZONE.
- 5) GPS OPERATOR ROBERT WOOD, OBSERVED A PDOP OF 1.9.
- 6) ALL GPS OBSERVATIONS ARE IN COMPLIANCE WITH COGCC RULE NO. 215.
- 7) SURFACE AND BOTTOM HOLE LOCATIONS ARE MEASURED 90° FROM SECTION LINES.

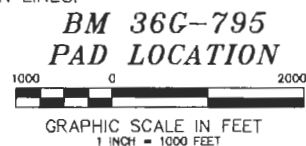
SURVEYOR'S CERTIFICATE

I, George R. Bauer: a Professional Land Surveyor in the State of Colorado do hereby certify that this Survey was made under my direct supervision, and that this Plat represents said Survey.



-LEGEND-

- FIELD SURVEYED SECTION CORNER LOCATIONS
- FIELD SURVEYED WELL LOCATION
- CALCULATED BOTTOM HOLE LOCATION



BM 36G-795
PAD LOCATION
Caerus Piceance LLC
CAERUS



WELL LOCATION PLAT

CONSTRUCTION SURVEYS, INC.
2012 SUNRISE BLVD. BILT, CO
81652 (970)876-5753

SURVEY BY:REW 12/10/15

PDOP: 1.9

DRAWN BY:REW 01/28/16

DWG: CAERUS\BM36G-795PLAT_1

REVISED: