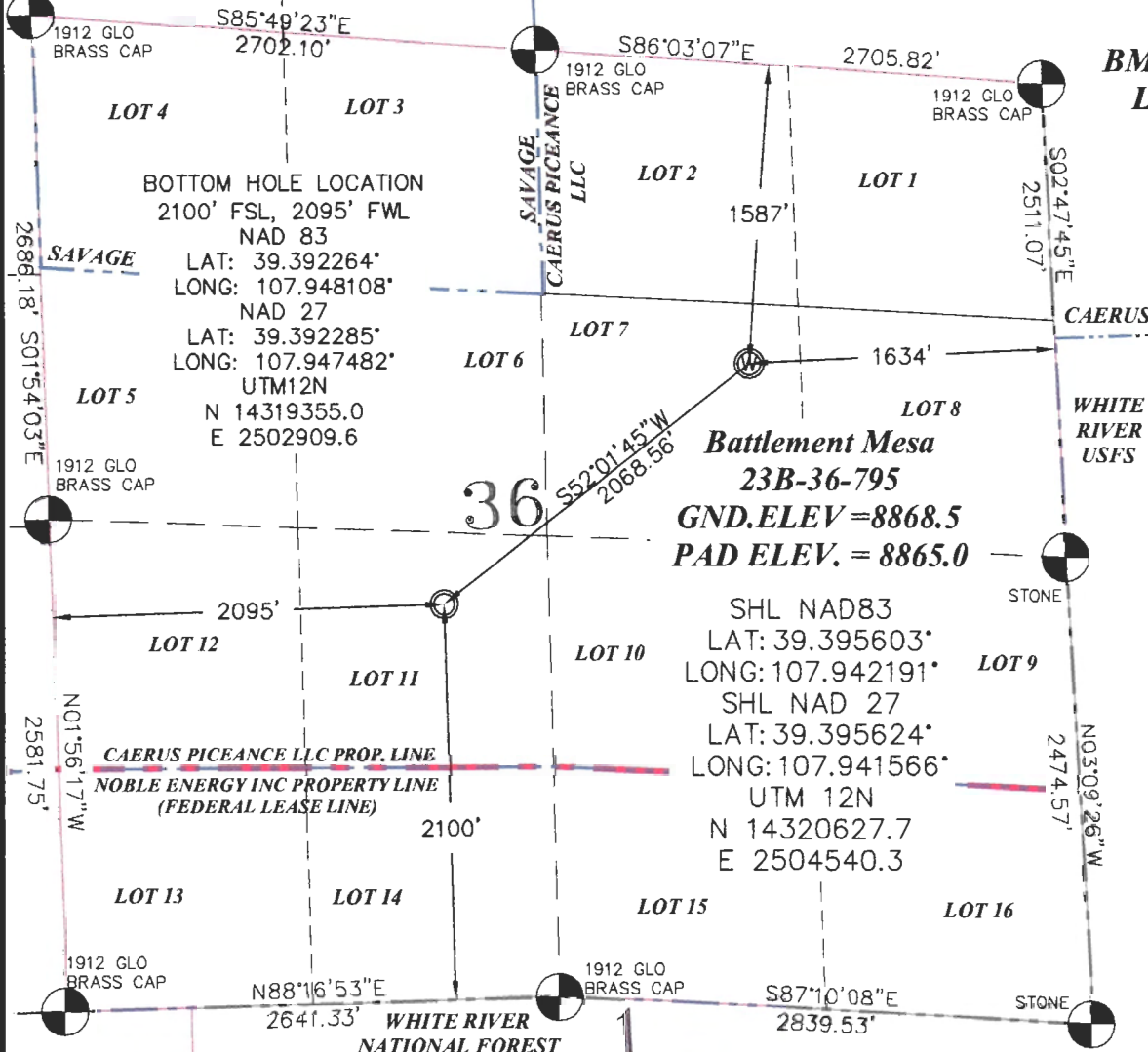


SEC. 36, T. 7 S., R. 95 W. OF THE 6TH P.M.

PLAT 1

BM 23B-36-795
LOCATION



BOTTOM HOLE LOCATION
2100' FSL, 2095' FWL
NAD 83
LAT: 39.392264°
LONG: 107.948108°
NAD 27
LAT: 39.392285°
LONG: 107.947482°
UTM12N
N 14319355.0
E 2502909.6

Battlement Mesa
23B-36-795
GND.ELEV.=8868.5
PAD ELEV. = 8865.0

SHL NAD83
LAT: 39.395603°
LONG: 107.942191°
SHL NAD 27
LAT: 39.395624°
LONG: 107.941566°
UTM 12N
N 14320627.7
E 2504540.3

THIS WELL LOCATION PLAT WAS PREPARED FOR CAERUS PICEANCE LLC TO LOCATE THE BATTLEMENT MESA #23B-36-795 WELL, 1587 FEET FROM THE NORTH LINE OF SAID SECTION AND 1634 FEET FROM THE EAST LINE OF LOT 7 (SW1/4NE1/4) OF SECTION 36, T. 7 S., R. 95 W. OF THE 6TH P.M. GARFIELD COUNTY, COLORADO.

REFERENCE NOTES

- 1) T. 7 S., R. 95 W., 6TH P.M. GLO PLAT.
- 2) U.S.G.S. QUAD: PARACHUTE, CO
- 3) ELEVATIONS BASED ON N.A.V.D. 1988 LIDAR BASED CONTROL PT CP MON 8
- 4) LATITUDES AND LONGITUDES ARE BASED ON NAD 83, COLORADO CENTRAL ZONE.
- 5) GPS OPERATOR ROBERT WOOD, OBSERVED A PDOP OF 1.9.
- 6) ALL GPS OBSERVATIONS ARE IN COMPLIANCE WITH COGCC RULE NO. 215.
- 7) SURFACE AND BOTTOM HOLE LOCATIONS ARE MEASURED 90° FROM SECTION LINES.

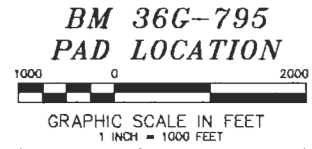
SURVEYOR'S CERTIFICATE

I, George R. Bauer: a Professional Land Surveyor in the State of Colorado do hereby certify that this Survey was made under my direct supervision, and that this Plat represents said Survey.



-LEGEND-

- FIELD SURVEYED SECTION CORNER LOCATIONS
- FIELD SURVEYED WELL LOCATION
- CALCULATED BOTTOM HOLE LOCATION



CONSTRUCTION SURVEYS WELL LOCATION PLAT

CONSTRUCTION SURVEYS, INC.
0012 SUNRISE BLVD. SILT, CO
81652 (970)876-5753

SURVEY BY:REW 12/10/15	PDOP: 1.9
DRAWN BY:REW 01/28/16	DWG:CAERUS\BM36G-795PLAT_1
REVISED:	