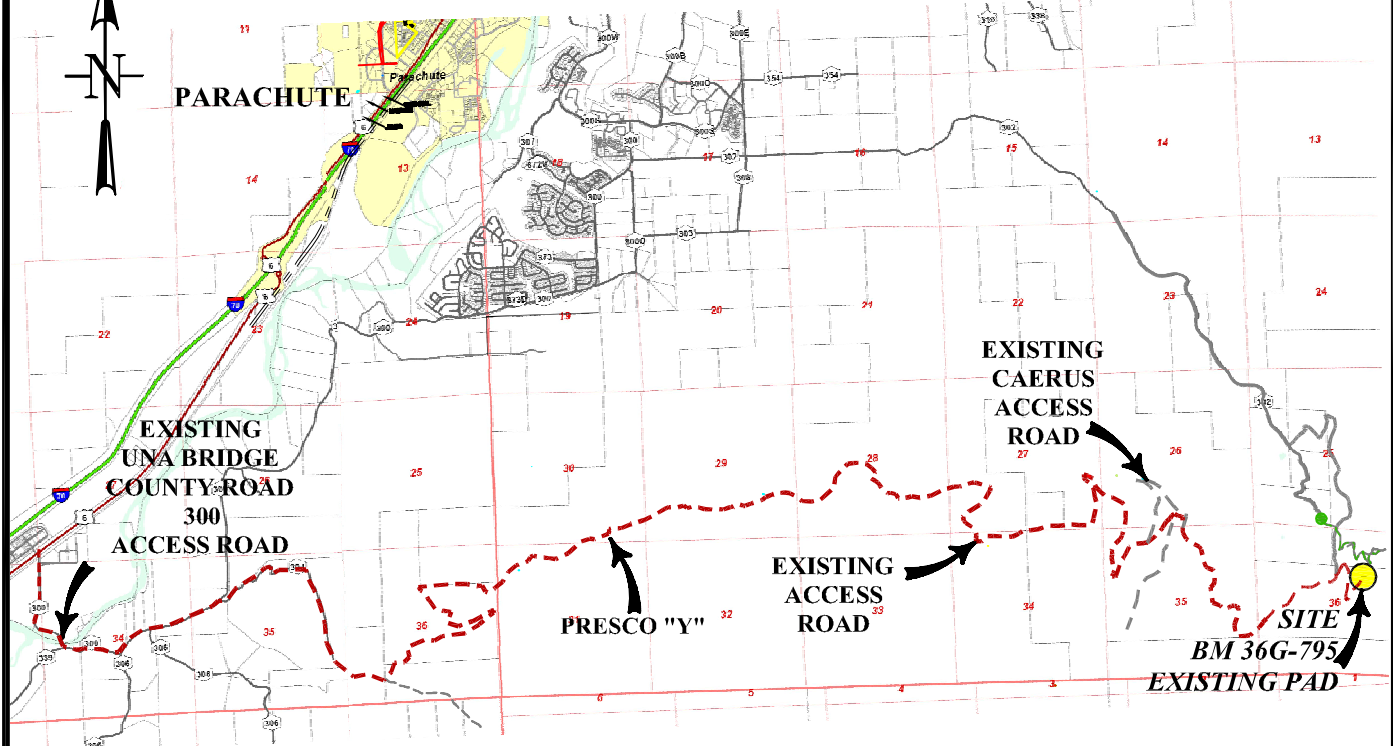


*Plat 5A*  
**BM 36G-795 PAD**  
**Access A**



**ACCESS:**

FROM THE UNA BRIDGE, PROCEED ALONG COUNTY ROAD 318 IN A GENERAL EAST/NORTHEAST DIRECTION  $\pm 1.2$  MILES TO THE KLEBOLD/THROM GATE, PROCEED IN A GENERAL EASTERLY/SOUTHEASTERLY DIRECTION ON A PRIVATE DIRT/GRAVEL ROAD  $\pm 1.8$  MILES TO THE APPROXIMATE BLM BOUNDARY, CONTINUE ON THE DIRT/GRAVEL ROAD THRU BLM IN A GENERAL NORTHERLY DIRECTION  $\pm 0.1$  MILES TO THE APPROXIMATE TOM BROWN, INC BOUNDARY, CONTINUE ON THE DIRT/GRAVEL ROAD THRU TOM BROWN, INC PROPERTY IN A GENERAL NORTHEASTERLY/NORTHWESTERLY DIRECTION  $\pm 1.6$  MILES TO AN INTERSECTION WITH A DIRT/GRAVEL ROAD ON THE RIGHT, PROCEED RIGHT IN A GENERAL EASTERLY DIRECTION THRU TOM BROWN, INC PROPERTY  $\pm 0.6$  MILES TO THE APPROXIMATE BLM BOUNDARY, CONTINUE ON THE DIRT/GRAVEL ROAD IN A GENERAL EASTERLY DIRECTION THRU BLM PROPERTY  $\pm 3.1$  MILES TO THE TOM BROWN, INC FEDERAL #28-95 WELL SITE, CONTINUE ALONG THE DIRT/GRAVEL ROAD IN A GENERAL EASTERLY DIRECTION  $\pm 2.3$  MILES TO A 'Y' INTERSECTION, PROCEED LEFT ALONG THE DIRT/GRAVEL ROAD IN A GENERAL EASTERLY DIRECTION  $\pm 0.4$  MILES TO A SWITCH BACK PROCEED UP THE ROADWAY  $\pm 0.9$  MILES TO THE EXISTING 35-D-795 PAD PROCEED THRU THE PAD LOCATION  $\pm 0.5$  MILES TO A DIRT ROAD INTERSECTION, PROCEED STRAIGHT 0.1 MILES TO THE TOP OF THE DIVIDE STAY RIGHT AND PROCEED 1.3 MILES PAST THE INTERSECTION TO THE 36L PAD, PROCEED  $\pm 0.6$  MILES UP THE ROADWAY CROSS BRIDGE AT BATTLEMENT CREEK AND PROCEED TO A DIRT ROAD INTERSECTION AND TURN RIGHT AND PROCEED  $\pm 0.1$  MILES TO A DIRT ROAD INTERSECTION AND TURN RIGHT, PROCEED UP THE ACCESS ROAD  $\pm 0.6$  MILES TO THE EXISTING 36G-795 PAD LOCATION BEING THE POINT OF DESTINATION.

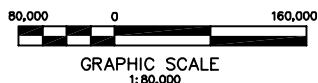
***Battlement Mesa 36-G-795***

**LOT7(SWNE), SECTION 36,**

**T. 7 S., R. 95 W. 6th P.M.**

**Garfield County Colorado**

**Caerus Piceance LLC**



**ACCESS-A**

**CONSTRUCTION SURVEYS, INC.**  
0012 SUNRISE BLVD. SILT, CO  
81652 (970)876-5753

SURVEY BY:REW 12/01/15

PDOP: 1.8

DRAWN BY:REW 12/31/15

DWG: CAERUS\BM35LPLAT5A

REVISED: