

# Verdad Oil & Gas Corporation

Well Name: **Meehl 01N-65W-24-2N**

Surface Location: Meehl 01N-65W-24 Pad Sec.24-T01N-R65W  
 North American Datum 1983 , US State Plane 1983 , Colorado Northern Zone

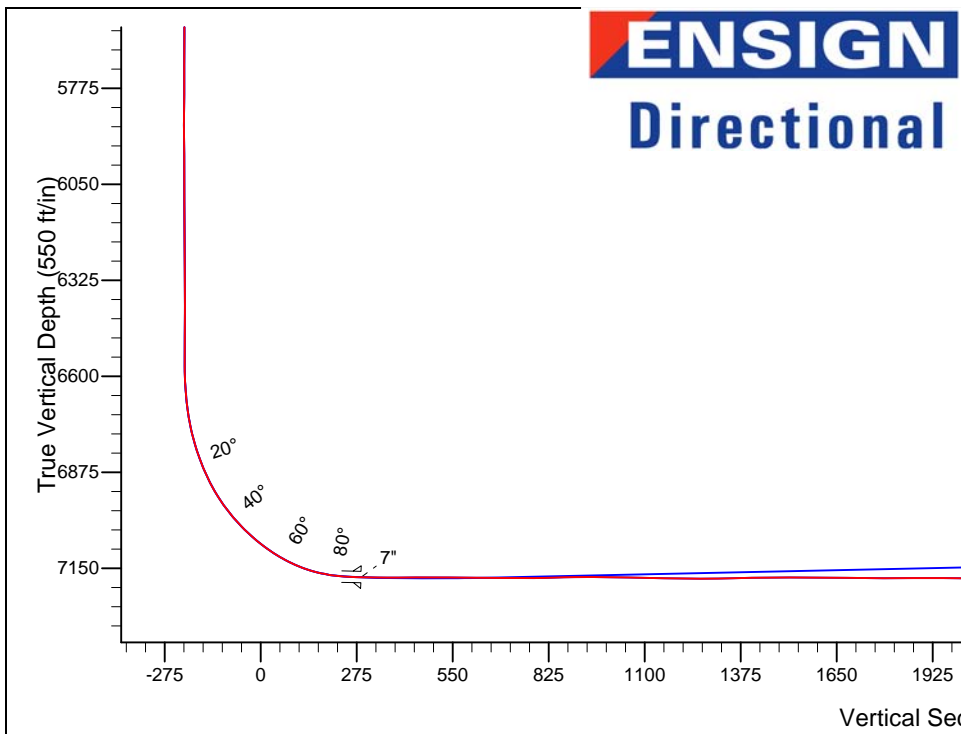
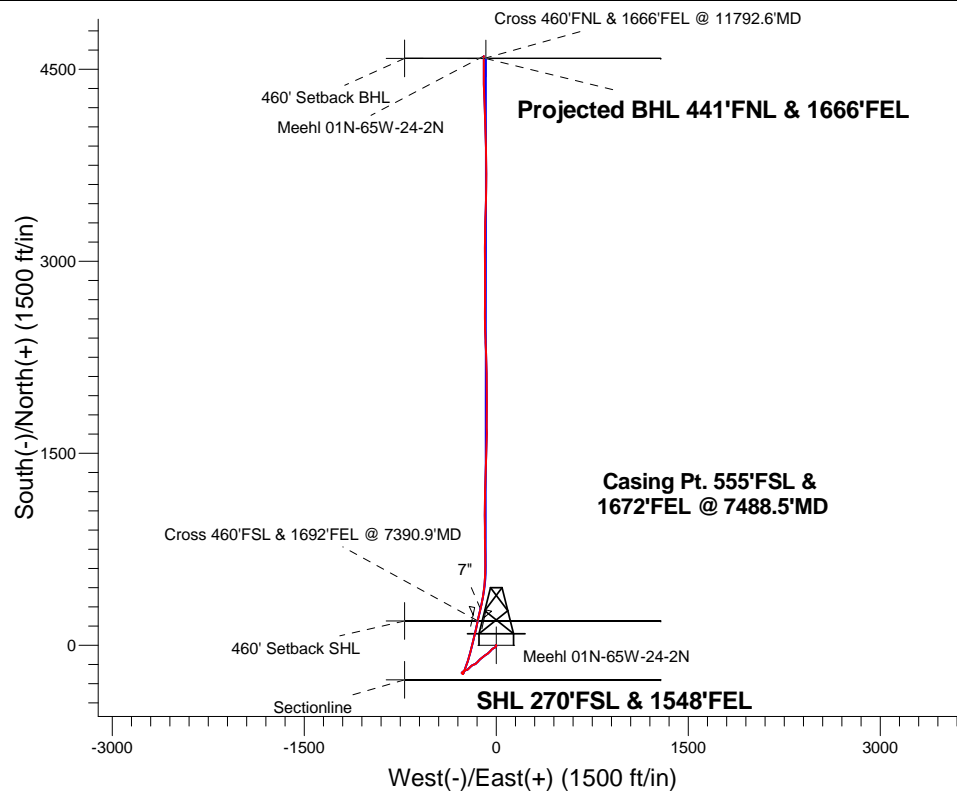
Ground Elevation: 5022.0

+N/-S	+E/-W	Northing	Easting	Latitude	Longitude	Slot
0.0	0.0	1255136.69	3249679.31	40.030292	-104.608366	

Xtreme 6 RKB - 16.2' WELL @ 5038.2ft (Xtreme 6 RKB - 16.2')

## FINAL SURVEY

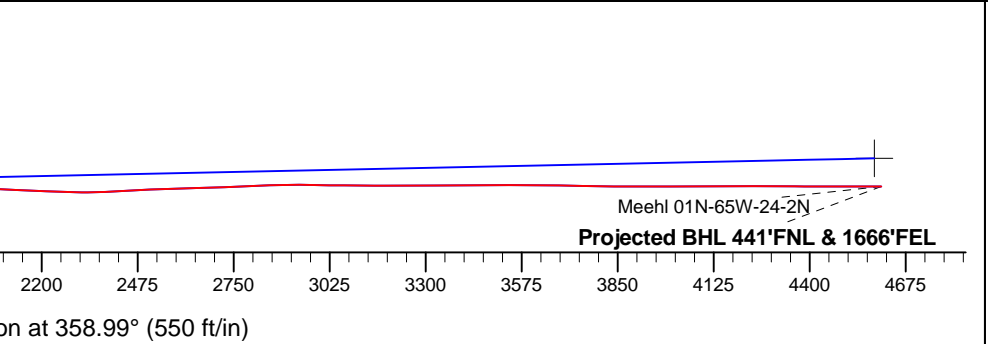
Projected Bottom Hole Location  
 11812'MD 7174'TVD 4604'N & 97'W of SHL 90  
 degree Incl @ 0.1 degree AZM



Meehl 01N-65W-24 Pad Sec.24-T01N-R65W  
 Meehl 01N-65W-24-2N  
 Wellbore #1  
 12:25, June 11 2015

ANNOTATIONS		
TVD	MD	Annotation
7168.3	7390.9	Cross 460'FSL & 1692'FEL @ 7390.9'MD
7173.6	11792.6	Cross 460'FNL & 1666'FEL @ 11792.6'MD

LEGEND	
	Meehl 01N-65W-24-2N, Wellbore #1, Plan #7 (5-29-15) V0
	Wellbore #1
	Survey #1 - Surface





# **Verdad Oil & Gas Corporation**

**SEC.24-T1N-R65W**

**Meehl 01N-65W-24 Pad Sec.24-T01N-R65W**

**Meehl 01N-65W-24-2N**

**Wellbore #1**

**Survey: Survey #1 - Surface**

## **Standard Survey Report**

**11 June, 2015**

<b>Company:</b>	Verdad Oil & Gas Corporation	<b>Local Co-ordinate Reference:</b>	Well Meehl 01N-65W-24-2N
<b>Project:</b>	SEC.24-T1N-R65W	<b>TVD Reference:</b>	WELL @ 5038.2ft (Xtreme 6 RKB - 16.2')
<b>Site:</b>	Meehl 01N-65W-24 Pad Sec.24-T01N-R65W	<b>MD Reference:</b>	WELL @ 5038.2ft (Xtreme 6 RKB - 16.2')
<b>Well:</b>	Meehl 01N-65W-24-2N	<b>North Reference:</b>	True
<b>Wellbore:</b>	Wellbore #1	<b>Survey Calculation Method:</b>	Minimum Curvature
<b>Design:</b>	Wellbore #1	<b>Database:</b>	EDM 2003.21 Single User Db

<b>Project</b>	SEC.24-T1N-R65W		
<b>Map System:</b>	US State Plane 1983	<b>System Datum:</b>	Mean Sea Level
<b>Geo Datum:</b>	North American Datum 1983		Using Well Reference Point
<b>Map Zone:</b>	Colorado Northern Zone		Using geodetic scale factor

<b>Site</b>	Meehl 01N-65W-24 Pad Sec.24-T01N-R65W				
<b>Site Position:</b>		<b>Northing:</b>	1,255,136.20ft	<b>Latitude:</b>	40.030291
<b>From:</b>	Lat/Long	<b>Easting:</b>	3,249,664.19ft	<b>Longitude:</b>	-104.608420
<b>Position Uncertainty:</b>	0.0 ft	<b>Slot Radius:</b>	"	<b>Grid Convergence:</b>	0.58 °

<b>Well</b>	Meehl 01N-65W-24-2N					
<b>Well Position</b>	<b>+N-S</b>	0.0 ft	<b>Northing:</b>	1,255,136.69 ft	<b>Latitude:</b>	40.030292
	<b>+E-W</b>	0.0 ft	<b>Easting:</b>	3,249,679.31 ft	<b>Longitude:</b>	-104.608366
<b>Position Uncertainty</b>		0.0 ft	<b>Wellhead Elevation:</b>	ft	<b>Ground Level:</b>	5,022.0 ft

<b>Wellbore</b>	Wellbore #1				
<b>Magnetics</b>	<b>Model Name</b>	<b>Sample Date</b>	<b>Declination (°)</b>	<b>Dip Angle (°)</b>	<b>Field Strength (nT)</b>
	IGRF2010	5/13/2015	8.22	66.64	52,540

<b>Design</b>	Wellbore #1				
<b>Audit Notes:</b>					
<b>Version:</b>	1.0	<b>Phase:</b>	ACTUAL	<b>Tie On Depth:</b>	0.0
<b>Vertical Section:</b>		<b>Depth From (TVD) (ft)</b>	<b>+N-S (ft)</b>	<b>+E-W (ft)</b>	<b>Direction (°)</b>
		0.0	0.0	0.0	358.99

<b>Survey Program</b>	<b>Date</b>	6/11/2015			
<b>From (ft)</b>	<b>To (ft)</b>	<b>Survey (Wellbore)</b>	<b>Tool Name</b>	<b>Description</b>	
135.0	11,812.0	Survey #1 - Surface (Wellbore #1)	MWD	MWD - Standard	

<b>Survey</b>										
<b>Measured Depth (ft)</b>	<b>Inclination (°)</b>	<b>Azimuth (°)</b>	<b>Vertical Depth (ft)</b>	<b>+N-S (ft)</b>	<b>+E-W (ft)</b>	<b>Vertical Section (ft)</b>	<b>Dogleg Rate (°/100ft)</b>	<b>Build Rate (°/100ft)</b>	<b>Turn Rate (°/100ft)</b>	
0.0	0.00	0.00	0.0	0.0	0.0	0.0	0.00	0.00	0.00	
1.0	0.01	290.30	1.0	0.0	0.0	0.0	1.26	1.26	0.00	
<b>SHL 270°FSL &amp; 1548°FEL</b>										
1.2	0.02	290.30	1.2	0.0	0.0	0.0	1.26	1.26	0.00	
<b>460' Setback SHL</b>										
2.8	0.04	290.30	2.8	0.0	0.0	0.0	1.26	1.26	0.00	
<b>460' Setback BHL</b>										
7.3	0.09	290.30	7.3	0.0	0.0	0.0	1.26	1.26	0.00	
<b>Sectionline</b>										
100.0	1.26	290.30	100.0	0.4	-1.0	0.4	1.26	1.26	0.00	
200.0	0.59	261.33	200.0	1.0	-3.1	1.0	0.80	-0.67	-28.97	
300.0	0.62	165.42	300.0	0.3	-3.3	0.3	0.90	0.03	-95.91	
400.0	0.91	165.35	400.0	-1.0	-2.9	-1.0	0.29	0.29	-0.07	

<b>Company:</b>	Verdad Oil & Gas Corporation	<b>Local Co-ordinate Reference:</b>	Well Meehl 01N-65W-24-2N
<b>Project:</b>	SEC.24-T1N-R65W	<b>TVD Reference:</b>	WELL @ 5038.2ft (Xtreme 6 RKB - 16.2')
<b>Site:</b>	Meehl 01N-65W-24 Pad Sec.24-T01N-R65W	<b>MD Reference:</b>	WELL @ 5038.2ft (Xtreme 6 RKB - 16.2')
<b>Well:</b>	Meehl 01N-65W-24-2N	<b>North Reference:</b>	True
<b>Wellbore:</b>	Wellbore #1	<b>Survey Calculation Method:</b>	Minimum Curvature
<b>Design:</b>	Wellbore #1	<b>Database:</b>	EDM 2003.21 Single User Db

Survey										
Measured Depth (ft)	Inclination (°)	Azimuth (°)	Vertical Depth (ft)	+N/-S (ft)	+E/-W (ft)	Vertical Section (ft)	Dogleg Rate (°/100ft)	Build Rate (°/100ft)	Turn Rate (°/100ft)	
500.0	0.33	108.05	499.9	-2.2	-2.5	-2.2	0.78	-0.58	-57.31	
600.0	0.36	134.12	599.9	-2.2	-1.9	-2.2	0.16	0.03	26.08	
700.0	0.50	138.66	699.9	-2.8	-1.4	-2.8	0.14	0.14	4.54	
800.0	0.55	149.66	799.9	-3.5	-0.9	-3.5	0.11	0.05	11.00	
900.0	0.86	152.05	899.9	-4.6	-0.3	-4.6	0.32	0.31	2.39	
1,000.0	1.24	184.44	999.9	-6.2	0.3	-6.2	0.69	0.38	32.39	
1,100.0	2.80	216.43	1,099.9	-9.2	-1.2	-9.2	1.86	1.56	31.99	
1,200.0	5.14	234.24	1,199.6	-13.9	-6.0	-13.8	2.62	2.34	17.81	
1,300.0	5.89	239.06	1,299.1	-19.2	-14.4	-18.9	0.88	0.75	4.82	
1,400.0	6.91	240.08	1,398.5	-24.8	-24.0	-24.4	1.03	1.02	1.03	
1,500.0	7.67	226.89	1,497.7	-31.9	-34.5	-31.3	1.83	0.75	-13.19	
1,600.0	7.36	221.49	1,596.8	-41.7	-43.5	-41.0	0.77	-0.31	-5.40	
1,700.0	6.90	225.47	1,696.0	-50.7	-52.0	-49.8	0.67	-0.46	3.98	
1,800.0	6.82	225.98	1,795.3	-59.4	-60.3	-58.3	0.10	-0.08	0.51	
1,900.0	6.79	237.31	1,894.6	-66.2	-69.9	-64.9	1.34	-0.03	11.32	
2,000.0	6.74	231.61	1,993.9	-73.1	-79.5	-71.7	0.67	-0.05	-5.69	
2,100.0	7.57	235.45	2,093.2	-80.5	-89.1	-79.0	0.96	0.83	3.84	
2,200.0	7.90	232.47	2,192.2	-88.3	-100.3	-86.6	0.52	0.33	-2.99	
2,300.0	7.70	230.80	2,291.3	-96.8	-110.9	-94.9	0.30	-0.20	-1.67	
2,400.0	7.36	227.41	2,390.4	-105.5	-120.9	-103.3	0.56	-0.34	-3.39	
2,500.0	6.86	225.95	2,489.7	-113.7	-129.6	-111.4	0.53	-0.50	-1.46	
2,600.0	7.00	224.24	2,588.9	-122.5	-138.5	-120.0	0.25	0.14	-1.71	
2,700.0	7.17	227.44	2,688.2	-131.0	-146.8	-128.4	0.43	0.17	3.20	
2,800.0	7.01	226.19	2,787.4	-139.4	-156.3	-136.7	0.22	-0.16	-1.25	
2,900.0	6.20	243.66	2,886.7	-146.4	-165.3	-143.4	2.16	-0.81	17.48	
3,000.0	6.41	244.76	2,986.1	-151.2	-175.2	-148.1	0.24	0.21	1.10	
3,100.0	6.80	243.40	3,085.5	-155.6	-185.6	-152.3	0.42	0.39	-1.37	
3,200.0	7.04	228.38	3,184.7	-162.9	-195.9	-159.4	1.82	0.24	-15.02	
3,300.0	6.95	225.37	3,284.0	-171.2	-204.2	-167.6	0.38	-0.10	-3.01	
3,400.0	6.49	224.93	3,383.3	-179.6	-212.8	-175.8	0.46	-0.46	-0.44	
3,500.0	6.11	228.16	3,482.7	-187.1	-220.6	-183.2	0.52	-0.38	3.23	
3,600.0	5.93	254.12	3,582.1	-191.9	-229.7	-187.8	2.70	-0.18	25.96	
3,700.0	5.22	252.39	3,681.7	-194.7	-239.1	-190.4	0.73	-0.71	-1.73	
3,800.0	5.02	242.31	3,781.3	-197.6	-247.0	-193.2	0.92	-0.21	-10.08	
3,900.0	5.03	236.14	3,880.9	-202.7	-254.7	-198.2	0.54	0.01	-6.17	
4,000.0	4.21	231.31	3,980.5	-207.3	-261.3	-202.6	0.91	-0.82	-4.83	
4,100.0	3.23	218.60	4,080.3	-211.8	-266.0	-207.1	1.27	-0.98	-12.71	
4,200.0	2.58	213.54	4,180.2	-216.1	-269.0	-211.3	0.70	-0.65	-5.06	
4,300.0	0.31	210.34	4,280.2	-217.8	-270.2	-213.0	2.27	-2.27	-3.20	
4,400.0	0.19	136.90	4,380.2	-218.1	-270.2	-213.3	0.31	-0.12	-73.44	
4,500.0	0.67	77.25	4,480.2	-218.2	-269.7	-213.4	0.60	0.49	-59.66	
4,600.0	0.91	89.32	4,580.2	-217.9	-268.1	-213.1	0.29	0.24	12.07	
4,700.0	0.80	107.69	4,680.1	-218.1	-266.6	-213.4	0.29	-0.11	18.37	
4,800.0	1.10	119.98	4,780.1	-218.8	-265.1	-214.1	0.36	0.30	12.28	
4,900.0	1.19	119.05	4,880.1	-219.8	-263.4	-215.1	0.09	0.09	-0.92	
5,000.0	1.41	108.18	4,980.1	-220.9	-261.4	-216.2	0.33	0.22	-10.87	
5,100.0	0.75	65.18	5,080.1	-221.0	-259.2	-216.4	1.00	-0.66	-43.00	
5,200.0	0.41	52.87	5,180.1	-220.3	-258.7	-215.7	0.36	-0.34	-12.31	
5,300.0	0.49	39.28	5,280.0	-219.8	-258.1	-215.2	0.14	0.09	-13.59	
5,400.0	1.26	184.40	5,380.0	-220.7	-257.9	-216.1	1.69	0.76	145.12	
5,500.0	0.79	191.21	5,480.0	-222.6	-258.1	-218.0	0.49	-0.47	6.81	
5,600.0	0.40	238.48	5,580.0	-223.2	-258.6	-218.7	0.59	-0.39	47.26	
5,700.0	0.27	228.33	5,680.0	-223.6	-259.1	-219.0	0.14	-0.13	-10.14	
5,800.0	0.43	168.60	5,780.0	-224.0	-259.2	-219.4	0.37	0.16	-59.73	

<b>Company:</b>	Verdad Oil & Gas Corporation	<b>Local Co-ordinate Reference:</b>	Well Meehl 01N-65W-24-2N
<b>Project:</b>	SEC.24-T1N-R65W	<b>TVD Reference:</b>	WELL @ 5038.2ft (Xtreme 6 RKB - 16.2')
<b>Site:</b>	Meehl 01N-65W-24 Pad Sec.24-T01N-R65W	<b>MD Reference:</b>	WELL @ 5038.2ft (Xtreme 6 RKB - 16.2')
<b>Well:</b>	Meehl 01N-65W-24-2N	<b>North Reference:</b>	True
<b>Wellbore:</b>	Wellbore #1	<b>Survey Calculation Method:</b>	Minimum Curvature
<b>Design:</b>	Wellbore #1	<b>Database:</b>	EDM 2003.21 Single User Db

Survey

Measured Depth (ft)	Inclination (°)	Azimuth (°)	Vertical Depth (ft)	+N/-S (ft)	+E/-W (ft)	Vertical Section (ft)	Dogleg Rate (°/100ft)	Build Rate (°/100ft)	Turn Rate (°/100ft)	
5,900.0	0.59	296.98	5,880.0	-224.3	-259.5	-219.7	0.92	0.16	128.38	
6,000.0	0.66	72.44	5,980.0	-223.9	-259.3	-219.3	1.15	0.07	135.46	
6,100.0	0.38	53.39	6,080.0	-223.6	-258.0	-219.1	0.32	-0.28	-19.06	
6,200.0	1.06	298.81	6,180.0	-222.9	-259.2	-218.3	1.27	0.68	-114.58	
6,300.0	0.73	298.53	6,280.0	-222.1	-260.4	-217.4	0.34	-0.34	-0.28	
6,400.0	0.52	261.07	6,380.0	-221.8	-261.5	-217.2	0.45	-0.21	-37.47	
6,500.0	0.41	240.51	6,480.0	-222.1	-262.2	-217.5	0.20	-0.11	-20.56	
6,600.0	1.97	71.98	6,579.9	-222.2	-260.8	-217.6	2.37	1.57	-168.53	
6,700.0	7.46	25.83	6,679.6	-216.1	-256.8	-211.6	6.26	5.49	-46.15	
6,800.0	15.79	21.47	6,777.5	-197.8	-248.6	-193.4	8.36	8.32	-4.37	
6,900.0	24.85	19.24	6,871.3	-165.3	-237.0	-161.1	9.09	9.06	-2.23	
7,000.0	35.43	17.77	6,957.8	-118.0	-221.1	-114.1	10.61	10.58	-1.47	
7,100.0	45.50	14.78	7,033.7	-55.7	-202.9	-52.1	10.26	10.07	-2.99	
7,200.0	56.00	13.67	7,096.9	19.2	-184.0	22.5	10.53	10.50	-1.11	
7,300.0	68.05	13.14	7,144.3	104.6	-163.5	107.5	12.06	12.06	-0.53	
7,390.9	80.58	12.40	7,168.3	190.0	-144.4	192.5	13.81	13.79	-0.82	
<b>Cross 460'FSL &amp; 1692'FEL @ 7390.9'MD</b>										
7,400.0	81.62	12.40	7,169.7	198.8	-142.4	201.2	11.41	11.41	0.00	
7,488.5	88.35	12.36	7,175.8	284.9	-123.5	287.1	7.60	7.60	-0.05	
<b>7"</b>										
7,500.0	88.50	12.34	7,176.2	296.2	-121.0	298.3	1.34	1.33	-0.13	
7,600.0	90.59	8.76	7,177.2	394.3	-101.8	396.0	4.15	2.09	-3.58	
7,700.0	89.38	4.56	7,176.6	493.6	-90.4	495.1	4.37	-1.21	-4.20	
7,800.0	89.80	0.82	7,177.4	593.5	-85.9	594.9	3.77	0.42	-3.74	
7,900.0	89.74	359.29	7,177.8	693.5	-85.9	694.9	1.53	-0.06	-1.52	
8,000.0	90.73	358.93	7,178.0	793.4	-87.8	794.9	1.06	0.99	-0.36	
8,100.0	90.60	359.81	7,175.7	893.4	-89.0	894.8	0.89	-0.13	0.88	
8,200.0	89.64	0.02	7,175.9	993.4	-88.9	994.8	0.99	-0.96	0.21	
8,300.0	88.55	0.67	7,177.4	1,093.4	-88.4	1,094.8	1.27	-1.09	0.65	
8,400.0	89.31	1.32	7,179.2	1,193.3	-86.5	1,194.7	1.00	0.76	0.65	
8,500.0	90.23	0.80	7,180.1	1,293.3	-85.4	1,294.6	1.05	0.91	-0.52	
8,600.0	91.26	2.40	7,177.7	1,393.2	-82.0	1,394.5	1.90	1.04	1.60	
8,700.0	90.12	2.40	7,176.9	1,493.1	-77.8	1,494.3	1.14	-1.14	0.00	
8,800.0	89.92	0.94	7,176.9	1,593.1	-74.5	1,594.2	1.47	-0.19	-1.46	
8,900.0	88.78	359.01	7,177.9	1,693.1	-74.5	1,694.1	2.24	-1.14	-1.93	
9,000.0	90.46	0.00	7,178.5	1,793.1	-75.5	1,794.1	1.94	1.67	0.99	
9,100.0	90.02	0.20	7,178.1	1,893.1	-75.4	1,894.1	0.48	-0.44	0.20	
9,200.0	88.96	0.61	7,178.6	1,993.1	-74.5	1,994.1	1.14	-1.06	0.41	
9,300.0	87.47	358.98	7,182.0	2,093.0	-74.3	2,094.0	2.20	-1.48	-1.63	
9,400.0	87.51	358.16	7,186.7	2,192.8	-77.4	2,193.9	0.83	0.04	-0.83	
9,500.0	88.46	357.34	7,190.3	2,292.7	-81.1	2,293.8	1.25	0.95	-0.81	
9,600.0	93.01	358.60	7,188.7	2,392.6	-84.6	2,393.7	4.73	4.56	1.26	
9,700.0	92.71	358.84	7,183.4	2,492.4	-87.0	2,493.6	0.38	-0.30	0.24	
9,800.0	91.98	359.90	7,179.7	2,592.3	-88.2	2,593.5	1.29	-0.73	1.07	
9,900.0	91.69	0.25	7,176.2	2,692.3	-87.7	2,693.4	0.45	-0.29	0.34	
10,000.0	92.70	359.86	7,172.9	2,792.2	-87.6	2,793.3	1.08	1.01	-0.39	
10,100.0	90.95	359.80	7,169.2	2,892.1	-87.9	2,893.2	1.75	-1.75	-0.06	
10,200.0	88.73	359.66	7,169.9	2,992.1	-88.5	2,993.2	2.22	-2.22	-0.14	
10,300.0	89.71	0.03	7,170.8	3,092.1	-88.7	3,093.2	1.05	0.98	0.37	
10,400.0	89.84	0.93	7,171.8	3,192.1	-88.2	3,193.2	0.91	0.13	0.90	
10,500.0	90.40	1.60	7,171.1	3,292.1	-85.5	3,293.1	0.87	0.56	0.67	
10,600.0	90.51	1.48	7,170.5	3,392.0	-82.9	3,393.0	0.17	0.12	-0.12	
10,700.0	90.60	1.40	7,169.5	3,492.0	-80.4	3,492.9	0.11	0.09	-0.08	
10,800.0	88.98	0.48	7,170.0	3,592.0	-78.8	3,592.8	1.86	-1.62	-0.93	

<b>Company:</b>	Verdad Oil & Gas Corporation	<b>Local Co-ordinate Reference:</b>	Well Meehl 01N-65W-24-2N
<b>Project:</b>	SEC.24-T1N-R65W	<b>TVD Reference:</b>	WELL @ 5038.2ft (Xtreme 6 RKB - 16.2')
<b>Site:</b>	Meehl 01N-65W-24 Pad Sec.24-T01N-R65W	<b>MD Reference:</b>	WELL @ 5038.2ft (Xtreme 6 RKB - 16.2')
<b>Well:</b>	Meehl 01N-65W-24-2N	<b>North Reference:</b>	True
<b>Wellbore:</b>	Wellbore #1	<b>Survey Calculation Method:</b>	Minimum Curvature
<b>Design:</b>	Wellbore #1	<b>Database:</b>	EDM 2003.21 Single User Db

Measured Depth (ft)	Inclination (°)	Azimuth (°)	Vertical Depth (ft)	+N/-S (ft)	+E/-W (ft)	Vertical Section (ft)	Dogleg Rate (°/100ft)	Build Rate (°/100ft)	Turn Rate (°/100ft)
10,900.0	89.34	0.04	7,171.2	3,692.0	-78.2	3,692.8	0.56	0.36	-0.44
11,000.0	89.02	359.17	7,173.0	3,792.0	-79.0	3,792.8	0.92	-0.32	-0.87
11,100.0	90.09	359.15	7,173.9	3,891.9	-80.7	3,892.8	1.07	1.07	-0.02
11,200.0	89.62	357.86	7,173.6	3,991.9	-82.8	3,992.7	1.37	-0.47	-1.29
11,300.0	90.47	358.18	7,173.9	4,091.8	-86.6	4,092.7	0.91	0.85	0.32
11,400.0	90.52	357.74	7,172.9	4,191.8	-90.1	4,192.7	0.45	0.05	-0.45
11,500.0	89.75	357.65	7,172.6	4,291.7	-94.5	4,292.7	0.77	-0.77	-0.08
11,600.0	89.57	359.32	7,173.7	4,391.6	-97.2	4,392.7	1.68	-0.19	1.67
11,700.0	90.10	0.20	7,173.6	4,491.6	-97.2	4,492.6	1.04	0.54	0.88
11,792.6	90.00	0.10	7,173.6	4,584.2	-96.9	4,585.2	0.16	-0.11	-0.11
<b>Cross 460'FNL &amp; 1666'FEL @ 11792.6'MD - BHL 460'FNL &amp; 1650'FEL - BHL 460'FNL &amp; 1815'FEL</b>									
11,800.0	90.00	0.10	7,173.6	4,591.6	-96.9	4,592.6	0.00	0.00	0.00

Target Name	Dip Angle (°)	Dip Dir. (°)	TVD (ft)	+N/-S (ft)	+E/-W (ft)	Northing (ft)	Easting (ft)	Latitude	Longitude
Sectionline - hit/miss target - Shape	0.00	0.00	1.0	-270.3	-715.1	1,254,859.18	3,248,966.97	40.029550	-104.610920
- survey misses by 764.5ft at 1.1ft MD (1.1 TVD, 0.0 N, 0.0 E)									
- Polygon									
Point 1			1.0	0.0	0.0	1,254,859.18	3,248,966.97		
Point 2			1.0	0.0	2,000.0	1,254,879.29	3,250,966.79		
460' Setback BHL - survey misses by 4640.8ft at 2.0ft MD (2.0 TVD, 0.0 N, 0.0 E)	0.00	0.00	1.0	4,585.4	-715.1	1,259,714.45	3,248,918.15	40.042879	-104.610920
- Polygon									
Point 1			1.0	0.0	0.0	1,259,714.45	3,248,918.15		
Point 2			1.0	0.0	2,000.0	1,259,734.56	3,250,917.97		
460' Setback SHL - survey misses by 739.8ft at 1.3ft MD (1.3 TVD, 0.0 N, 0.0 E)	0.00	0.00	1.0	189.7	-715.1	1,255,319.14	3,248,962.34	40.030813	-104.610920
- Polygon									
Point 1			1.0	0.0	0.0	1,255,319.14	3,248,962.34		
Point 2			1.0	0.0	2,000.0	1,255,339.25	3,250,962.16		
SHL 270'FSL & 1548' - survey hits target - Point	0.00	0.00	1.0	0.0	0.0	1,255,136.72	3,249,679.31	40.030292	-104.608366
BHL 460'FNL & 1650' - survey misses by 81.9ft at 11792.6ft MD (7173.6 TVD, 4584.2 N, -96.9 E) - Point	0.00	0.00	7,093.2	4,584.2	-81.2	1,259,719.71	3,249,552.02	40.042876	-104.608656

Measured Depth (ft)	Vertical Depth (ft)	Name	Casing Diameter (")	Hole Diameter (")
7,488.5	7,175.8	7"	7	7-1/2

<b>Company:</b>	Verdad Oil & Gas Corporation	<b>Local Co-ordinate Reference:</b>	Well Meehl 01N-65W-24-2N
<b>Project:</b>	SEC.24-T1N-R65W	<b>TVD Reference:</b>	WELL @ 5038.2ft (Xtreme 6 RKB - 16.2')
<b>Site:</b>	Meehl 01N-65W-24 Pad Sec.24-T01N-R65W	<b>MD Reference:</b>	WELL @ 5038.2ft (Xtreme 6 RKB - 16.2')
<b>Well:</b>	Meehl 01N-65W-24-2N	<b>North Reference:</b>	True
<b>Wellbore:</b>	Wellbore #1	<b>Survey Calculation Method:</b>	Minimum Curvature
<b>Design:</b>	Wellbore #1	<b>Database:</b>	EDM 2003.21 Single User Db

**Survey Annotations**

Measured Depth (ft)	Vertical Depth (ft)	Local Coordinates		Comment
		+N/-S (ft)	+E/-W (ft)	
7,390.9	7,168.3	190.0	-144.4	Cross 460'FSL & 1692'FEL @ 7390.9'MD
11,792.6	7,173.6	4,584.2	-96.9	Cross 460'FNL & 1666'FEL @ 11792.6'MD

Checked By: \_\_\_\_\_ Approved By: \_\_\_\_\_ Date: \_\_\_\_\_