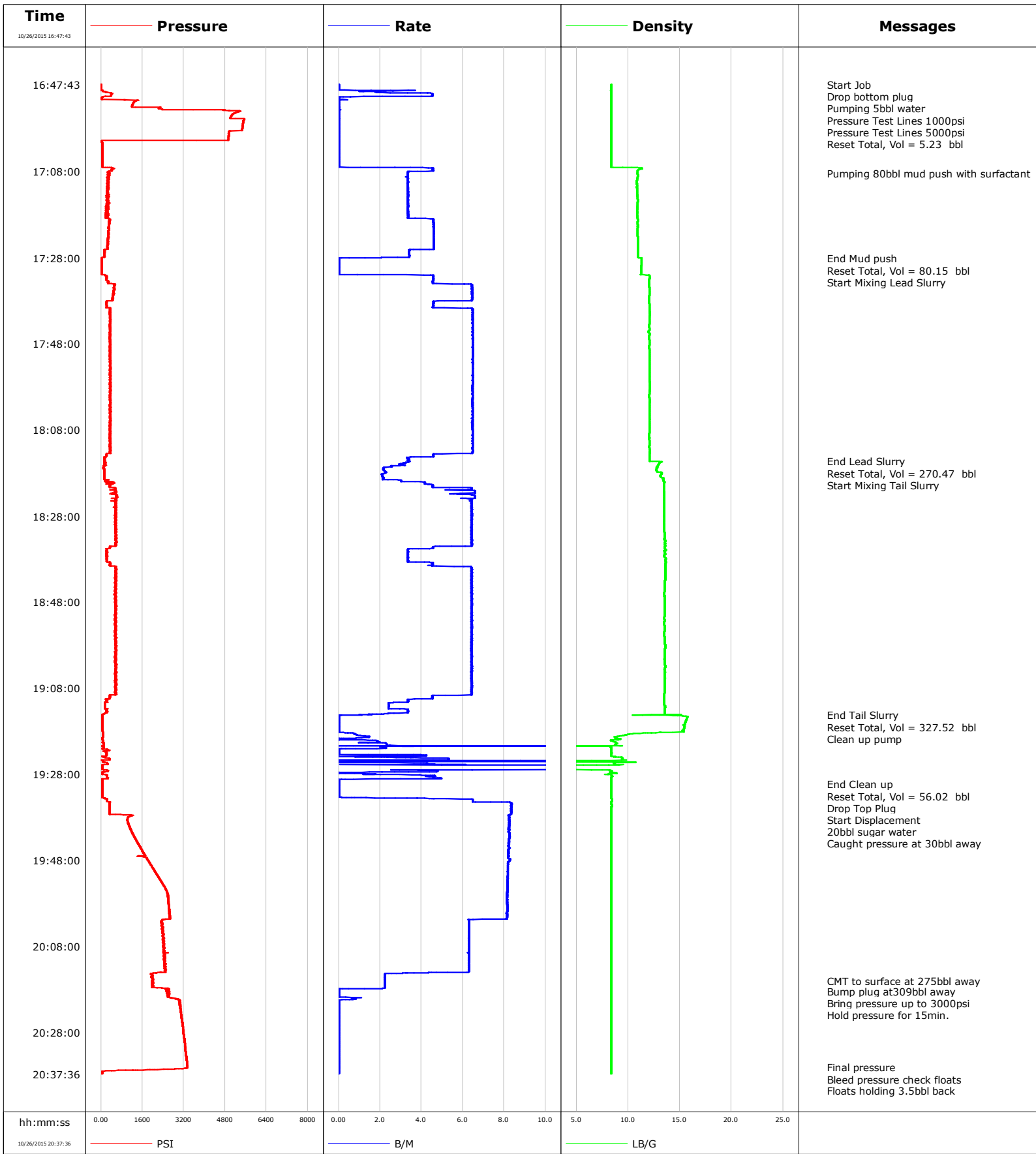


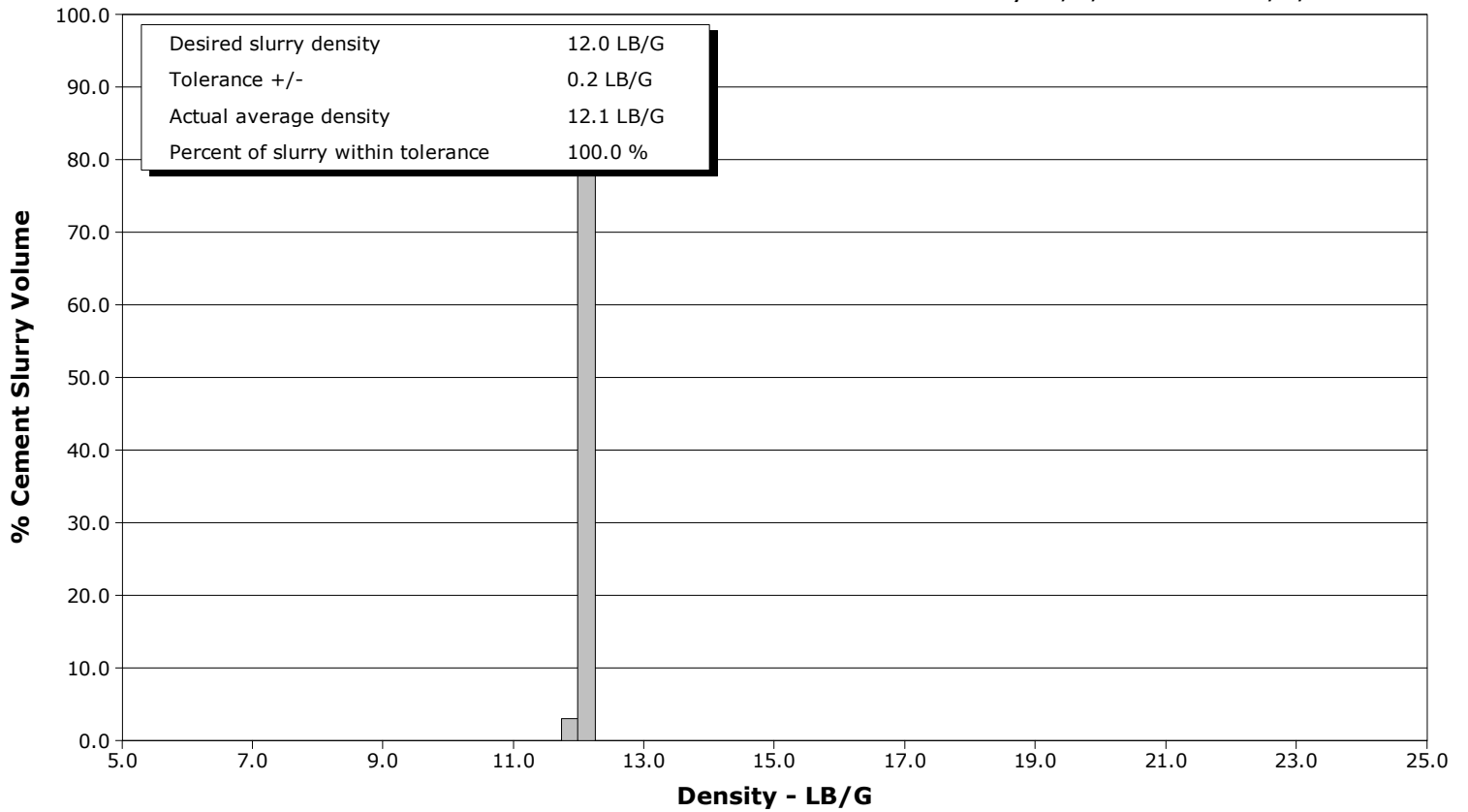
Well	Whisper Rock	Client	Anadarko
Field	Wattenberg	SIR No.	CWJN-01472
Engineer	Chris Valerio/Ken Sovereign	Job Type	Production
Country	United States	Job Date	10-26-2015



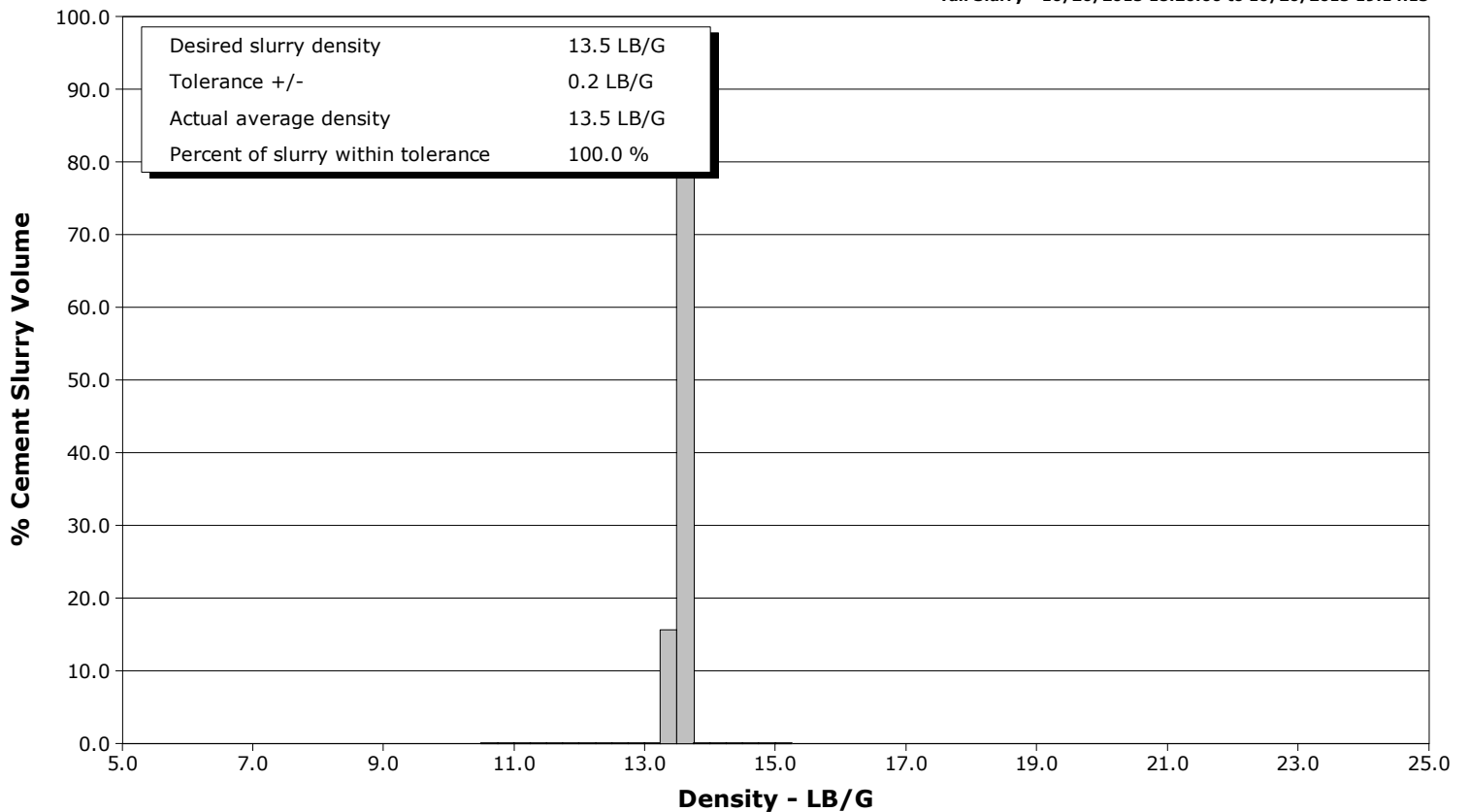
Well Whisper Rock
Field Wattenberg
Engineer Chris Valerio/Ken Sovereign
Country United States

Client Anadarko
SIR No. CWJN-01472
Job Type Production
Job Date 10-26-2015

Lead Slurry - 10/26/2015 17:32:05 to 10/26/2015 18:15:15



Tail Slurry - 10/26/2015 18:20:00 to 10/26/2015 19:14:13



				Customer			Job Number			
				Anadarko			CWJN-01472			
Well		Location (legal)			Schlumberger Location			Job Start		
Whisper Rock 8N-25HZ								Oct/26/2015		
Field		Formation Name/Type		Deviation	Bit Size	Well MD		Well TVD		
Wattenberg		Shale		90 deg	8.5 in	13417.0 ft		7287.0 ft		
County		State/Province		BHP	BHST	BHCT	Pore Press. Gradient			
Weld		Colorado		psi	235 degF	230 degF	lb/gal			
Well Master		API/UWI								
0631620734		05123410670000								
Rig Name	Drilled For	Service Via		Casing/Liner						
Precision #460	Oil	Land		Depth, ft		Size, in	Weight, lb/ft	Grade	Thread	
Offshore Zone	Well Class	Well Type		1849.0	9.6	36.0	J55	8RD		
	New	Development		13417.0	5.5	17.0	P110	8RD		
Drilling Fluid Type		Max. Density	Plastic Viscosity		Tubing/Drill Pipe					
Oil Mud		9.50 lb/gal	cP		T/D	Depth, ft	Size, in	Weight, lb/ft	Grade	Thread
Service Line	Job Type									
Cementing	Production									
Max. Allowed Tub. Press	Max. Allowed Ann. Press	WH Connection		Perforations/Open Hole						
4500 psi	psi	Single Cement head		Top, ft	Bottom, ft	shot/ft	No. of Shots	Total Interval		
Service Instructions 5bbl Water 80bbl Mud Push @ 10.9# with surfactant 268bbl 840sks Lead CMT @ 12# 1.79 Yield 10 gal/sk water 320bbl 1070sks Tail CMT @ 13.5# 1.68 Yield 8.1 gal/sk water				ft	ft			ft		
				ft	ft			Diameter		
				ft	ft			in		
Treat Down		Displacement		Packer Type		Packer Depth				
Casing		309.1 bbl				ft				
Tubing Vol.		Casing Vol.		Annular Vol.		Openhole Vol.				
bbl		311.2 bbl		560.0 bbl		bbl				
Casing/Tubing Secured	1 Hole Vol. Circulated prior to Cement	Casing Tools			Squeeze Job					
<input checked="" type="checkbox"/>	<input checked="" type="checkbox"/>									
Lift Pressure	psi	Shoe Type		Float	Squeeze Type					
Pipe Rotated	Pipe Reciprocated	Shoe Depth		13417.0 ft	Tool Type					
<input type="checkbox"/>	<input type="checkbox"/>									
No. Centralizers	Top Plugs	Bottom Plugs	Stage Tool Type		Tool Depth		ft			
	1	1								
Cement Head Type	Single		Stage Tool Depth		ft		Tail Pipe Size		in	
Job Scheduled For	Arrived on Location	Leave Location		Collar Type		Float	Tail Pipe Depth		ft	
Oct/26/2015 12:00	Oct/26/2015 13:00	Oct/26/2015 22:00								
				Collar Depth		13327.0 ft	Sqz. Total Vol.		bbl	
Date	Time 24-hr clock	Treating Pressure PSI	Flow Rate B/M	Density LB/G	Volume BBL	Message				
10/26/2015	16:47:43	-0	0.0	8.37	0.0	Started Acquisition				
10/26/2015	16:47:46	3	0.0	8.37	0.0	Start Job				
10/26/2015	16:49:15	68	2.3	8.36	0.4	Drop bottom plug				
10/26/2015	16:49:19	68	1.6	8.37	0.5	Pumping 5bbl water				
10/26/2015	16:51:42	1304	0.0	8.37	5.2	Pressure Test Lines 1000psi				
10/26/2015	16:52:43	1204	0.0	8.37	5.2					
10/26/2015	16:54:01	5345	0.0	8.37	5.2	Pressure Test Lines 5000psi				
10/26/2015	16:57:43	5463	0.0	8.38	5.2					
10/26/2015	17:01:00	25	0.0	8.38	5.2	Reset Total, Vol = 5.23 bbl				
10/26/2015	17:02:43	48	0.0	8.37	0.0					
10/26/2015	17:07:43	421	4.6	10.93	3.0					
10/26/2015	17:08:17	280	3.3	10.89	5.2	Pumping 80bbl mud push with surfactant				
10/26/2015	17:12:43	242	3.4	10.86	20.0					
10/26/2015	17:17:43	189	3.4	10.88	36.7					
10/26/2015	17:22:43	278	4.6	10.91	58.2					
10/26/2015	17:27:43	140	3.4	10.97	79.2					
10/26/2015	17:28:07	32	0.0	11.30	80.1	End Mud push				
10/26/2015	17:28:08	31	0.0	11.30	80.1	Reset Total, Vol = 80.15 bbl				
10/26/2015	17:32:05	157	4.6	12.05	80.6	Start Mixing Lead Slurry				
10/26/2015	17:32:43	219	4.6	12.10	83.5					
10/26/2015	17:37:43	440	6.5	11.99	113.1					

Well Whisper Rock 8N-25HZ			Field Wattenberg		Job Start Oct/26/2015	Customer Anadarko		Job Number CWJN-01472
Date	Time 24-hr clock	Treating Pressure PSI	Flow Rate B/M	Density LB/G	Volume BBL	Message		
10/26/2015	17:47:43	348	6.5	12.05	174.7			
10/26/2015	17:52:43	366	6.5	12.04	207.1			
10/26/2015	17:57:43	358	6.5	12.09	239.4			
10/26/2015	18:02:43	360	6.5	12.07	271.8			
10/26/2015	18:07:43	356	6.5	12.05	304.1			
10/26/2015	18:12:43	357	6.5	12.12	336.4			
10/26/2015	18:15:15	128	3.4	12.07	348.4	End Lead Slurry		
10/26/2015	18:15:45	131	3.2	13.00	350.0	Reset Total, Vol = 270.47 bbl		
10/26/2015	18:17:43	122	2.3	12.81	355.0			
10/26/2015	18:20:00	247	3.2	13.45	360.2	Start Mixing Tail Slurry		
10/26/2015	18:22:43	568	5.9	13.49	374.8			
10/26/2015	18:27:43	572	6.4	13.48	406.9			
10/26/2015	18:32:43	544	6.4	13.52	439.0			
10/26/2015	18:37:43	238	3.3	13.59	463.6			
10/26/2015	18:42:43	576	6.4	13.58	490.7			
10/26/2015	18:47:43	591	6.4	13.54	522.8			
10/26/2015	18:52:43	562	6.4	13.47	555.0			
10/26/2015	18:57:43	563	6.4	13.56	587.1			
10/26/2015	19:02:43	591	6.4	13.57	619.2			
10/26/2015	19:07:43	552	6.4	13.54	651.3			
10/26/2015	19:12:43	149	2.4	13.56	673.7			
10/26/2015	19:14:13	48	1.1	10.69	678.1	End Tail Slurry		
10/26/2015	19:14:24	49	0.0	15.12	678.1	Reset Total, Vol = 327.52 bbl		
10/26/2015	19:14:35	49	0.0	15.72	678.1	Clean up pump		
10/26/2015	19:17:43	50	0.0	15.35	678.1			
10/26/2015	19:22:43	170	0.0	8.39	684.1			
10/26/2015	19:27:43	47	0.0	8.85	729.1			
10/26/2015	19:30:21	46	0.0	8.38	734.1	End Clean up		
10/26/2015	19:30:25	45	0.0	8.38	734.1	Reset Total, Vol = 56.02 bbl		
10/26/2015	19:30:38	45	0.0	8.38	734.1	Drop Top Plug		
10/26/2015	19:30:39	45	0.0	8.38	734.1	Start Displacement		
10/26/2015	19:32:43	46	0.0	8.38	734.2			
10/26/2015	19:35:24	336	8.3	8.40	747.8	20bbl sugar water		
10/26/2015	19:37:43	1156	8.3	8.38	767.0			
10/26/2015	19:38:06	1024	8.2	8.38	770.2	Caught pressure at 30bbl away		
10/26/2015	19:42:43	1305	8.2	8.38	808.2			
10/26/2015	19:47:43	1790	8.3	8.38	849.3			
10/26/2015	19:52:43	2303	8.2	8.38	890.2			
10/26/2015	19:57:43	2616	8.1	8.38	930.8			
10/26/2015	20:02:43	2390	6.3	8.38	969.6			
10/26/2015	20:07:43	2454	6.3	8.38	1001.1			
10/26/2015	20:12:43	2461	6.3	8.38	1032.6			
10/26/2015	20:16:03	1957	2.2	8.38	1045.7	CMT to surface at 275bbl away		
10/26/2015	20:17:43	2510	2.2	8.38	1049.4			
10/26/2015	20:18:20	2522	0.0	8.38	1049.6	Bump plug at 309bbl away		
10/26/2015	20:20:22	3010	0.2	8.38	1050.1	Bring pressure up to 3000psi		
10/26/2015	20:20:58	3034	0.0	8.38	1050.1	Hold pressure for 15min.		
10/26/2015	20:22:43	3068	0.0	8.38	1050.1			
10/26/2015	20:27:43	3184	0.0	8.38	1050.1			
10/26/2015	20:32:43	3278	0.0	8.38	1050.2			
10/26/2015	20:36:05	3338	0.0	8.38	1050.2	Final pressure		
10/26/2015	20:36:24	3037	0.0	8.38	1050.2	Bleed pressure check floats		
10/26/2015	20:37:24	46	0.0	8.38	1050.2	Floats holding 3.5bbl back		

Well Whisper Rock 8N-25HZ	Field Wattenberg	Job Start Oct/26/2015	Customer Anadarko	Job Number CWJN-01472
-------------------------------------	----------------------------	---------------------------------	-----------------------------	---------------------------------

Post Job Summary

Average Pump Rates, bbl/min					Volume of Fluid Injected, bbl			
Slurry 5.2	N2	Mud	Maximum Rate 8.0	Total Slurry 588.0	Mud 0.0	Spacer 80.0	N2	
Treating Pressure Summary, psi					Breakdown Fluid			
Maximum 3338	Final 3338	Average 1028	Bump Plug to 2300	Breakdown	Type	Volume bbl	Density lb/gal	
Avg. N2 Percent %	Designed Slurry Volume 588.0 bbl	Displacement 309.0 bbl	Mix Water Temp 63 degF	Cement Circulated to Surface? <input checked="" type="checkbox"/>	Volume 34.0 bbl			
				Washed Thru Perfs <input type="checkbox"/>	To ft			
Customer or Authorized Representative Travis Kruckenberg			Schlumberger Supervisor Chris Valerio/Ken Sovereign		Circulation Lost <input type="checkbox"/>	Job Completed <input checked="" type="checkbox"/>		
				-	-			