

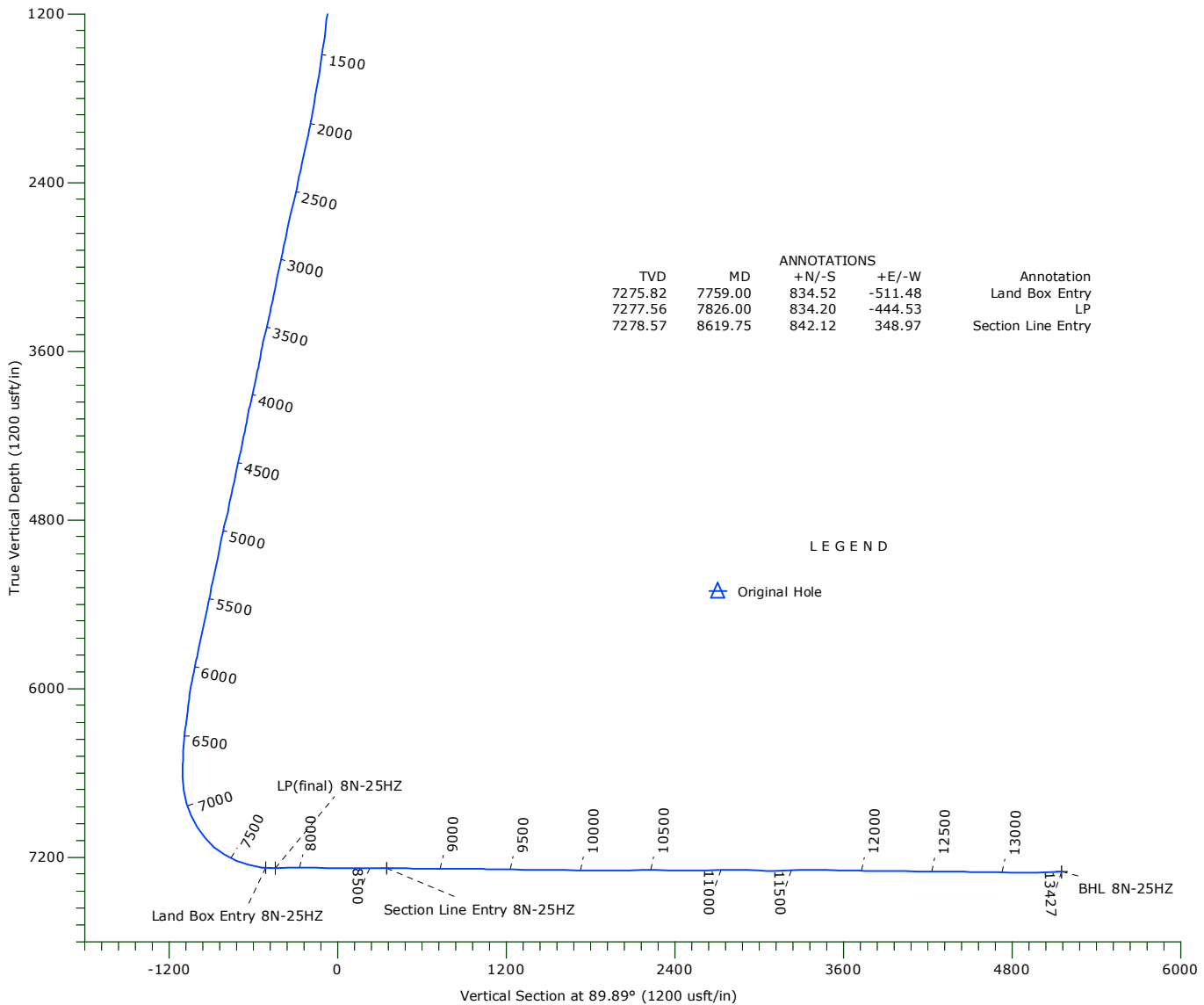
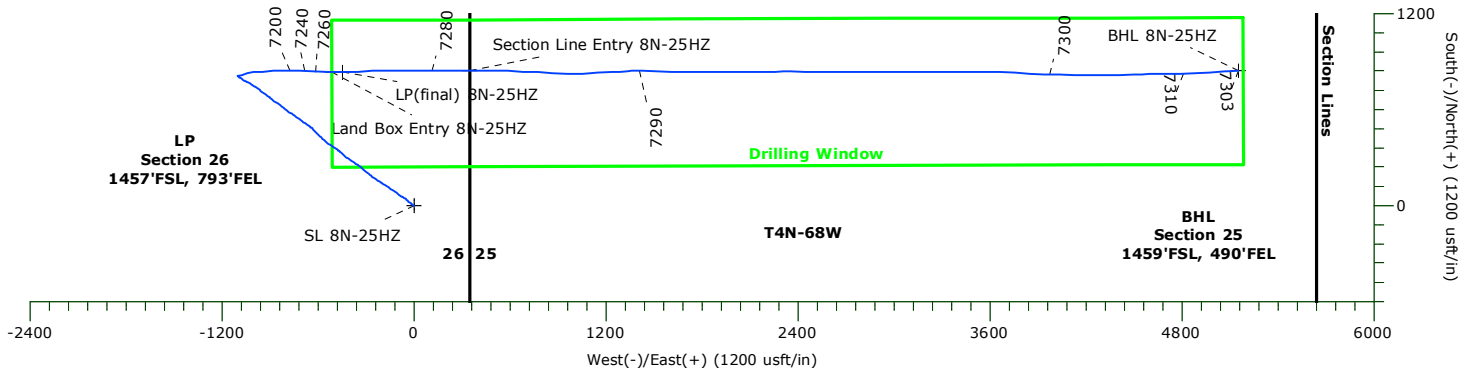


US ROCKIES WATTENBERG PLANNING

Project: WELD-NAD83-UTMFT13N
 Site: Wilson Ranch 16-26HZ Pad
 Well: Whisper Rock 8N-25HZ
 Wellbore: Original Hole
 Design: Original Hole



Precision
 Directional Services



WELLBORE TARGET DETAILS

Name	TVD	+N/-S	+E/-W	Northing	Easting	Latitude	Longitude	Shape
SL 8N-25HZ	0.00	0.00	0.00	14628365.76	1651023.80	40.2790889°N	104.9619690°W	Point
Land Box Entry 8N-25HZ	7275.82	834.52	-511.48	14629200.06	1650511.96	40.2813806°N	104.9638029°W	Point
LP(final) 8N-25HZ	7277.56	834.19	-444.53	14629199.77	1650578.91	40.2813797°N	104.9635629°W	Point
Section Line Entry 8N-25HZ	7278.57	842.12	348.97	14629208.03	1651372.40	40.2814014°N	104.9607178°W	Point
BHL 8N-25HZ	7303.32	842.83	5153.43	14629210.81	1656176.87	40.2814019°N	104.9434912°W	Point

Precision Drilling Corporation

Survey Report

Company: US ROCKIES WATTENBERG PLANNING	Local Co-ordinate Reference: Well Whisper Rock 8N-25HZ
Project: WELD-NAD83-UTMFT13N	TVD Reference: 5072'GL+20'KB @ 5092.00usft (PD 460)
Site: Wilson Ranch 16-26HZ Pad	MD Reference: 5072'GL+20'KB @ 5092.00usft (PD 460)
Well: Whisper Rock 8N-25HZ	North Reference: True
Wellbore: Original Hole	Survey Calculation Method: Minimum Curvature
Design: Original Hole	Database: Compass_US

Project WELD-NAD83-UTMFT13N	
Map System: Universal Transverse Mercator (US Survey Fee	System Datum: Mean Sea Level
Geo Datum: North American Datum 1983	
Map Zone: Zone 13N (108 W to 102 W)	

Site Wilson Ranch 16-26HZ Pad		
Site Position:	Northing: 14,628,290.77 usft	Latitude: 40.2788830°N
From: Lat/Long	Easting: 1,651,023.27 usft	Longitude: 104.9619710°W
Position Uncertainty: 0.00 usft	Slot Radius: 13.20 in	Grid Convergence: 0.02 °

Well Whisper Rock 8N-25HZ		
Well Position +N-S 0.00 usft	Northing: 14,628,365.76 usft	Latitude: 40.2790890°N
+E/-W 0.00 usft	Easting: 1,651,023.79 usft	Longitude: 104.9619690°W
Position Uncertainty 3.28 usft	Wellhead Elevation: 0.00 usft	Ground Level: 5,072.00 usft

Wellbore Original Hole

Magnetics	Model Name	Sample Date	Declination (°)	Dip Angle (°)	Field Strength (nT)
	IGRF2010	10/04/15	8.38	66.77	52,592

Design Original Hole

Audit Notes:			
Version: 1.0	Phase: ACTUAL	Tie On Depth:	0.00

Vertical Section:	Depth From (TVD) (usft)	+N-S (usft)	+E/-W (usft)	Direction (°)
	0.00	0.00	0.00	89.89

Survey Program		Date	10/26/15		
From (usft)	To (usft)	Survey (Wellbore)	Tool Name	Description	
10.00	1,795.00	Survey #1 (Original Hole)	APC_ISCWSA REV 2 MW	Fixed:v2:standard declination	
1,921.00	13,355.00	Survey #2 (Original Hole)	APC_ISCWSA REV 2 MW	Fixed:v2:Rockies, crustal dec + 3-axis correction	
13,427.00	13,427.00	Survey #3 (Original Hole)	APC_BLIND	OWSG BLIND	

Measured Depth (usft)	Inclination (°)	Azimuth (°)	Vertical Depth (usft)	+N-S (usft)	+E/-W (usft)	Vertical Section (usft)	Dogleg Rate (°/100usft)	Build Rate (°/100usft)	Turn Rate (°/100usft)	
0.00	0.00	0.00	0.00	0.00	0.00	0.00	0.00	0.00	0.00	
SL 8N-25HZ										
10.00	0.00	0.00	10.00	0.00	0.00	0.00	0.00	0.00	0.00	
96.00	0.34	246.24	96.00	-0.10	-0.23	-0.23	0.40	0.40	0.00	
187.00	1.46	303.20	186.99	0.42	-1.45	-1.45	1.44	1.23	62.59	
276.00	2.22	306.34	275.94	2.07	-3.79	-3.78	0.86	0.85	3.53	
382.00	3.39	310.18	381.81	5.30	-7.84	-7.83	1.12	1.10	3.62	
472.00	4.22	311.69	471.61	9.22	-12.34	-12.32	0.93	0.92	1.68	
562.00	5.10	311.64	561.32	14.08	-17.80	-17.78	0.98	0.98	-0.06	

Precision Drilling Corporation

Survey Report

Company:	US ROCKIES WATTENBERG PLANNING	Local Co-ordinate Reference:	Well Whisper Rock 8N-25HZ
Project:	WELD-NAD83-UTMFT13N	TVD Reference:	5072'GL+20'KB @ 5092.00usft (PD 460)
Site:	Wilson Ranch 16-26HZ Pad	MD Reference:	5072'GL+20'KB @ 5092.00usft (PD 460)
Well:	Whisper Rock 8N-25HZ	North Reference:	True
Wellbore:	Original Hole	Survey Calculation Method:	Minimum Curvature
Design:	Original Hole	Database:	Compass_US

Survey

Measured Depth (usft)	Inclination (°)	Azimuth (°)	Vertical Depth (usft)	+N/S (usft)	+E/W (usft)	Vertical Section (usft)	Dogleg Rate (°/100usft)	Build Rate (°/100usft)	Turn Rate (°/100usft)
652.00	5.68	306.55	650.92	19.39	-24.37	-24.33	0.83	0.64	-5.66
742.00	5.61	305.94	740.48	24.63	-31.51	-31.46	0.10	-0.08	-0.68
832.00	5.62	304.15	830.05	29.68	-38.72	-38.66	0.19	0.01	-1.99
922.00	5.53	303.85	919.62	34.57	-45.97	-45.90	0.11	-0.10	-0.33
1,012.00	6.11	308.55	1,009.16	39.97	-53.32	-53.24	0.83	0.64	5.22
1,103.00	6.95	307.36	1,099.57	46.33	-61.48	-61.39	0.93	0.92	-1.31
1,193.00	8.00	306.73	1,188.80	53.38	-70.83	-70.72	1.17	1.17	-0.70
1,283.00	9.09	304.35	1,277.80	61.14	-81.72	-81.60	1.27	1.21	-2.64
1,373.00	8.97	304.75	1,366.69	69.15	-93.35	-93.22	0.15	-0.13	0.44
1,463.00	9.46	304.34	1,455.53	77.32	-105.22	-105.07	0.55	0.54	-0.46
1,553.00	10.37	303.49	1,544.18	85.96	-118.09	-117.92	1.02	1.01	-0.94
1,643.00	10.96	305.73	1,632.63	95.43	-131.79	-131.60	0.80	0.66	2.49
1,733.00	11.73	304.39	1,720.87	105.59	-146.28	-146.08	0.90	0.86	-1.49
1,795.00	12.42	304.30	1,781.49	112.91	-156.99	-156.77	1.11	1.11	-0.15
1,921.00	10.69	300.39	1,904.94	126.46	-178.27	-178.02	1.51	-1.37	-3.10
2,015.00	12.96	301.24	1,996.94	136.34	-194.80	-194.54	2.42	2.41	0.90
2,109.00	15.61	306.51	2,088.03	149.33	-213.98	-213.70	3.14	2.82	5.61
2,203.00	14.70	301.63	2,178.76	163.11	-234.30	-233.99	1.67	-0.97	-5.19
2,297.00	13.71	306.47	2,269.89	175.99	-253.42	-253.08	1.64	-1.05	5.15
2,390.00	16.25	312.11	2,359.72	191.27	-271.94	-271.57	3.15	2.73	6.06
2,482.00	16.24	307.95	2,448.05	207.81	-291.63	-291.23	1.26	-0.01	-4.52
2,574.00	16.33	307.46	2,536.36	223.59	-312.04	-311.61	0.18	0.10	-0.53
2,669.00	16.04	307.33	2,627.60	239.67	-333.08	-332.62	0.31	-0.31	-0.14
2,762.00	15.07	306.30	2,717.19	254.62	-353.04	-352.55	1.08	-1.04	-1.11
2,854.00	13.60	302.40	2,806.33	267.50	-371.81	-371.30	1.91	-1.60	-4.24
2,948.00	15.08	304.84	2,897.40	280.41	-391.18	-390.64	1.70	1.57	2.60
3,043.00	14.15	303.96	2,989.32	293.95	-410.96	-410.39	1.01	-0.98	-0.93
3,136.00	14.23	310.88	3,079.49	307.79	-429.03	-428.44	1.83	0.09	7.44
3,230.00	16.16	311.96	3,170.20	324.09	-447.49	-446.87	2.08	2.05	1.15
3,325.00	14.04	308.53	3,261.92	340.11	-466.34	-465.69	2.42	-2.23	-3.61
3,420.00	15.76	302.46	3,353.72	354.22	-486.24	-485.56	2.44	1.81	-6.39
3,515.00	16.72	305.30	3,444.93	369.04	-508.28	-507.57	1.31	1.01	2.99
3,609.00	14.59	302.31	3,535.44	383.18	-529.33	-528.59	2.42	-2.27	-3.18
3,702.00	12.81	311.19	3,625.80	396.24	-546.99	-546.23	2.96	-1.91	9.55
3,796.00	15.22	311.62	3,717.00	411.30	-564.06	-563.27	2.57	2.56	0.46
3,891.00	18.12	315.33	3,808.00	430.09	-583.77	-582.94	3.25	3.05	3.91
3,986.00	17.96	315.63	3,898.33	451.07	-604.40	-603.53	0.19	-0.17	0.32
4,081.00	17.53	315.84	3,988.81	471.80	-624.61	-623.70	0.46	-0.45	0.22
4,175.00	14.63	307.93	4,079.13	489.26	-643.84	-642.90	3.86	-3.09	-8.41
4,268.00	12.57	305.62	4,169.52	502.37	-661.33	-660.37	2.29	-2.22	-2.48
4,361.00	13.66	302.69	4,260.09	514.20	-678.80	-677.81	1.37	1.17	-3.15
4,456.00	15.21	306.71	4,352.09	527.71	-698.24	-697.22	1.94	1.63	4.23
4,548.00	14.36	305.64	4,441.05	541.57	-717.18	-716.14	0.97	-0.92	-1.16

Precision Drilling Corporation

Survey Report

Company:	US ROCKIES WATTENBERG PLANNING	Local Co-ordinate Reference:	Well Whisper Rock 8N-25HZ
Project:	WELD-NAD83-UTMFT13N	TVD Reference:	5072'GL+20'KB @ 5092.00usft (PD 460)
Site:	Wilson Ranch 16-26HZ Pad	MD Reference:	5072'GL+20'KB @ 5092.00usft (PD 460)
Well:	Whisper Rock 8N-25HZ	North Reference:	True
Wellbore:	Original Hole	Survey Calculation Method:	Minimum Curvature
Design:	Original Hole	Database:	Compass_US

Survey

Measured Depth (usft)	Inclination (°)	Azimuth (°)	Vertical Depth (usft)	+N/S (usft)	+E/W (usft)	Vertical Section (usft)	Dogleg Rate (°/100usft)	Build Rate (°/100usft)	Turn Rate (°/100usft)
4,640.00	15.40	303.92	4,529.96	555.03	-736.59	-735.53	1.23	1.13	-1.87
4,733.00	13.45	302.34	4,620.03	567.71	-755.98	-754.89	2.14	-2.10	-1.70
4,826.00	14.77	306.74	4,710.22	580.59	-774.62	-773.50	1.83	1.42	4.73
4,919.00	17.37	308.10	4,799.58	596.25	-795.05	-793.90	2.82	2.80	1.46
5,104.00	13.90	306.05	4,977.71	626.38	-834.76	-833.55	1.90	-1.88	-1.11
5,196.00	13.89	306.02	5,067.02	639.37	-852.62	-851.39	0.01	-0.01	-0.03
5,289.00	14.65	304.63	5,157.15	652.62	-871.33	-870.07	0.90	0.82	-1.49
5,384.00	15.15	309.28	5,248.96	667.31	-890.82	-889.54	1.36	0.53	4.89
5,477.00	12.74	307.29	5,339.21	681.22	-908.39	-907.08	2.64	-2.59	-2.14
5,572.00	14.19	305.86	5,431.59	694.39	-926.16	-924.83	1.57	1.53	-1.51
5,667.00	14.60	303.93	5,523.61	707.89	-945.53	-944.17	0.66	0.43	-2.03
5,761.00	15.30	307.24	5,614.43	722.01	-965.24	-963.85	1.17	0.74	3.52
5,855.00	15.97	305.00	5,704.95	736.93	-985.70	-984.29	0.96	0.71	-2.38
5,949.00	12.63	301.86	5,796.03	749.78	-1,005.03	-1,003.59	3.65	-3.55	-3.34
6,043.00	14.35	303.12	5,887.43	761.57	-1,023.52	-1,022.05	1.86	1.83	1.34
6,137.00	11.92	299.29	5,978.97	772.68	-1,041.74	-1,040.26	2.74	-2.59	-4.07
6,231.00	8.86	292.50	6,071.42	780.20	-1,056.90	-1,055.40	3.50	-3.26	-7.22
6,325.00	7.82	300.46	6,164.43	786.22	-1,069.10	-1,067.59	1.65	-1.11	8.47
6,419.00	8.33	307.89	6,257.50	793.64	-1,079.99	-1,078.46	1.23	0.54	7.90
6,513.00	6.67	303.67	6,350.69	800.85	-1,089.91	-1,088.37	1.86	-1.77	-4.49
6,607.00	5.08	314.69	6,444.20	806.80	-1,097.41	-1,095.86	2.07	-1.69	11.72
6,700.00	1.90	321.93	6,537.01	810.91	-1,101.29	-1,099.73	3.45	-3.42	7.78
6,794.00	0.82	137.57	6,631.00	811.64	-1,101.80	-1,100.23	2.89	-1.15	186.85
6,888.00	8.60	86.00	6,724.62	811.64	-1,094.32	-1,092.76	8.63	8.28	-54.86
6,982.00	17.59	72.87	6,816.10	816.32	-1,073.69	-1,072.12	10.01	9.56	-13.97
7,076.00	23.48	73.27	6,904.09	825.90	-1,042.15	-1,040.56	6.27	6.27	0.43
7,169.00	31.44	84.74	6,986.61	833.48	-1,000.16	-998.56	10.24	8.56	12.33
7,263.00	41.07	87.22	7,062.32	837.23	-944.77	-943.16	10.36	10.24	2.64
7,357.00	49.29	87.98	7,128.52	839.99	-878.21	-876.60	8.76	8.74	0.81
7,451.00	58.38	89.38	7,183.94	841.68	-802.42	-800.81	9.74	9.67	1.49
7,545.00	68.09	91.22	7,226.22	841.19	-718.60	-716.99	10.48	10.33	1.96
7,638.00	74.75	92.93	7,255.84	837.97	-630.56	-628.95	7.37	7.16	1.84
7,732.00	83.73	90.93	7,273.37	834.89	-538.37	-536.76	9.78	9.55	-2.13
7,758.99	85.86	90.64	7,275.82	834.52	-511.49	-509.89	7.98	7.90	-1.08
Land Box Entry 8N-25HZ									
7,826.00	91.16	89.92	7,277.56	834.20	-444.53	-442.93	7.98	7.90	-1.07
LP(final) 8N-25HZ									
7,920.00	91.17	88.10	7,275.65	835.82	-350.57	-348.96	1.94	0.01	-1.94
8,014.00	89.62	87.61	7,275.00	839.34	-256.64	-255.03	1.73	-1.65	-0.52
8,108.00	89.36	88.47	7,275.84	842.55	-162.70	-161.08	0.96	-0.28	0.91
8,201.00	89.00	89.97	7,277.17	843.82	-69.72	-68.10	1.66	-0.39	1.61
8,295.00	89.46	90.08	7,278.43	843.78	24.27	25.89	0.50	0.49	0.12
8,389.00	88.54	90.62	7,280.07	843.20	118.26	119.87	1.13	-0.98	0.57
8,483.00	91.18	91.01	7,280.30	841.87	212.24	213.85	2.84	2.81	0.41

Precision Drilling Corporation

Survey Report

Company:	US ROCKIES WATTENBERG PLANNING	Local Co-ordinate Reference:	Well Whisper Rock 8N-25HZ
Project:	WELD-NAD83-UTMFT13N	TVD Reference:	5072'GL+20'KB @ 5092.00usft (PD 460)
Site:	Wilson Ranch 16-26HZ Pad	MD Reference:	5072'GL+20'KB @ 5092.00usft (PD 460)
Well:	Whisper Rock 8N-25HZ	North Reference:	True
Wellbore:	Original Hole	Survey Calculation Method:	Minimum Curvature
Design:	Original Hole	Database:	Compass_US

Survey

Measured Depth (usft)	Inclination (°)	Azimuth (°)	Vertical Depth (usft)	+N/-S (usft)	+E/-W (usft)	Vertical Section (usft)	Dogleg Rate (°/100usft)	Build Rate (°/100usft)	Turn Rate (°/100usft)
8,577.00	90.59	89.22	7,278.85	841.68	306.22	307.84	2.00	-0.63	-1.90
8,619.75	90.17	89.59	7,278.57	842.12	348.97	350.58	1.32	-0.99	0.87
Section Line Entry 8N-25HZ									
8,671.00	89.66	90.04	7,278.64	842.28	400.22	401.83	1.32	-0.99	0.87
8,764.00	88.66	91.43	7,280.01	841.09	493.20	494.81	1.84	-1.08	1.49
8,858.00	90.43	91.33	7,280.75	838.83	587.16	588.77	1.89	1.88	-0.11
8,952.00	89.20	90.91	7,281.06	836.99	681.14	682.75	1.38	-1.31	-0.45
9,046.00	89.00	94.02	7,282.53	832.95	775.03	776.63	3.31	-0.21	3.31
9,140.00	90.09	93.99	7,283.28	826.38	868.80	870.38	1.16	1.16	-0.03
9,234.00	90.11	90.73	7,283.12	822.51	962.71	964.28	3.47	0.02	-3.47
9,326.00	88.23	86.56	7,284.45	824.69	1,054.65	1,056.23	4.97	-2.04	-4.53
9,419.00	88.61	87.56	7,287.01	829.46	1,147.49	1,149.08	1.15	0.41	1.08
9,511.00	89.30	86.81	7,288.69	833.97	1,239.36	1,240.96	1.11	0.75	-0.82
9,604.00	89.96	88.13	7,289.29	838.08	1,332.26	1,333.87	1.59	0.71	1.42
9,696.00	88.79	90.60	7,290.30	839.10	1,424.24	1,425.85	2.97	-1.27	2.68
9,789.00	91.04	90.88	7,290.43	837.90	1,517.23	1,518.84	2.44	2.42	0.30
9,883.00	88.65	90.84	7,290.69	836.49	1,611.21	1,612.82	2.54	-2.54	-0.04
9,977.00	89.18	90.33	7,292.47	835.53	1,705.19	1,706.79	0.78	0.56	-0.54
10,069.00	89.60	89.50	7,293.45	835.66	1,797.18	1,798.78	1.01	0.46	-0.90
10,162.00	90.77	89.48	7,293.15	836.49	1,890.18	1,891.78	1.26	1.26	-0.02
10,254.00	89.87	90.78	7,292.63	836.28	1,982.17	1,983.78	1.72	-0.98	1.41
10,347.00	90.04	90.33	7,292.71	835.38	2,075.17	2,076.77	0.52	0.18	-0.48
10,439.00	91.11	89.49	7,291.78	835.53	2,167.16	2,168.76	1.48	1.16	-0.91
10,532.00	88.60	88.66	7,292.02	837.03	2,260.14	2,261.74	2.84	-2.70	-0.89
10,625.00	89.01	90.41	7,293.96	837.78	2,353.11	2,354.72	1.93	0.44	1.88
10,717.00	90.18	91.05	7,294.61	836.61	2,445.10	2,446.70	1.45	1.27	0.70
10,810.00	90.32	89.93	7,294.20	835.81	2,538.10	2,539.70	1.21	0.15	-1.20
10,902.00	91.92	89.24	7,292.41	836.48	2,630.07	2,631.67	1.89	1.74	-0.75
10,997.00	90.34	90.06	7,290.53	837.06	2,725.05	2,726.65	1.87	-1.66	0.86
11,090.00	89.81	91.12	7,290.41	836.10	2,818.04	2,819.64	1.27	-0.57	1.14
11,185.00	88.09	91.12	7,292.15	834.25	2,913.00	2,914.60	1.81	-1.81	0.00
11,278.00	88.35	89.78	7,295.04	833.52	3,005.95	3,007.55	1.47	0.28	-1.44
11,371.00	90.18	90.13	7,296.23	833.59	3,098.94	3,100.54	2.00	1.97	0.38
11,373.00	90.18	90.13	7,296.23	833.58	3,100.94	3,102.54	0.00	0.00	0.00
11,468.00	92.07	90.07	7,294.36	833.42	3,195.92	3,197.51	1.99	1.99	-0.06
11,562.00	91.02	89.28	7,291.83	833.95	3,289.88	3,291.48	1.40	-1.12	-0.84
11,656.00	90.36	89.28	7,290.69	835.13	3,383.87	3,385.46	0.70	-0.70	0.00
11,749.00	88.21	89.48	7,291.86	836.14	3,476.85	3,478.45	2.32	-2.31	0.22
11,842.00	89.16	89.45	7,293.99	837.01	3,569.82	3,571.42	1.02	1.02	-0.03
11,935.00	89.62	92.63	7,294.98	835.32	3,662.79	3,664.38	3.45	0.49	3.42
12,030.00	88.57	93.37	7,296.48	830.35	3,757.64	3,759.23	1.35	-1.11	0.78
12,123.00	88.86	93.42	7,298.57	824.84	3,850.46	3,852.03	0.32	0.31	0.05
12,216.00	89.63	92.34	7,299.79	820.17	3,943.33	3,944.90	1.43	0.83	-1.16

Precision Drilling Corporation

Survey Report

Company:	US ROCKIES WATTENBERG PLANNING	Local Co-ordinate Reference:	Well Whisper Rock 8N-25HZ
Project:	WELD-NAD83-UTMFT13N	TVD Reference:	5072'GL+20'KB @ 5092.00usft (PD 460)
Site:	Wilson Ranch 16-26HZ Pad	MD Reference:	5072'GL+20'KB @ 5092.00usft (PD 460)
Well:	Whisper Rock 8N-25HZ	North Reference:	True
Wellbore:	Original Hole	Survey Calculation Method:	Minimum Curvature
Design:	Original Hole	Database:	Compass_US

Survey

Measured Depth (usft)	Inclination (°)	Azimuth (°)	Vertical Depth (usft)	+N/-S (usft)	+E/-W (usft)	Vertical Section (usft)	Dogleg Rate (°/100usft)	Build Rate (°/100usft)	Turn Rate (°/100usft)
12,309.00	89.36	90.00	7,300.61	818.27	4,036.30	4,037.86	2.53	-0.29	-2.52
12,401.00	89.89	91.41	7,301.21	817.14	4,128.29	4,129.85	1.64	0.58	1.53
12,495.00	89.23	90.24	7,301.94	815.79	4,222.27	4,223.83	1.43	-0.70	-1.24
12,589.00	90.55	90.60	7,302.12	815.10	4,316.27	4,317.82	1.46	1.40	0.38
12,683.00	88.16	88.40	7,303.17	815.92	4,410.25	4,411.80	3.46	-2.54	-2.34
12,777.00	89.91	87.86	7,304.76	818.98	4,504.18	4,505.74	1.95	1.86	-0.57
12,872.00	89.88	89.73	7,304.93	820.98	4,599.15	4,600.72	1.97	-0.03	1.97
12,966.00	88.11	89.10	7,306.58	821.94	4,693.13	4,694.70	2.00	-1.88	-0.67
13,061.00	88.42	88.10	7,309.46	824.26	4,788.06	4,789.63	1.10	0.33	-1.05
13,154.00	90.24	87.76	7,310.54	827.62	4,880.99	4,882.57	1.99	1.96	-0.37
13,249.00	90.91	86.83	7,309.59	832.10	4,975.87	4,977.46	1.21	0.71	-0.98
13,343.00	92.41	86.42	7,306.87	837.63	5,069.67	5,071.27	1.65	1.60	-0.44
13,355.00	92.42	86.45	7,306.36	838.38	5,081.63	5,083.23	0.26	0.08	0.25
13,427.00	92.42	86.45	7,303.32	842.83	5,153.43	5,155.04	0.00	0.00	0.00

BHL 8N-25HZ

Design Targets

Target Name	- hit/miss target	- Shape	Dip Angle (°)	Dip Dir. (°)	TVD (usft)	+N/-S (usft)	+E/-W (usft)	Northing (usft)	Easting (usft)	Latitude	Longitude
SL 8N-25HZ			0.00	0.00	0.00	0.00	0.00	14,628,365.76	1,651,023.79	40.2790890°N	104.9619690°W
	- actual wellpath hits target center										
	- Point										
Land Box Entry 8N-25			0.00	0.00	7,275.82	834.52	-511.48	14,629,200.06	1,650,511.95	40.2813806°N	104.9638029°W
	- actual wellpath hits target center										
	- Point										
LP(final) 8N-25HZ			0.00	0.00	7,277.56	834.20	-444.53	14,629,199.76	1,650,578.91	40.2813797°N	104.9635628°W
	- actual wellpath hits target center										
	- Point										
Section Line Entry 8N			0.00	0.00	7,278.57	842.12	348.97	14,629,208.03	1,651,372.40	40.2814015°N	104.9607177°W
	- actual wellpath hits target center										
	- Point										
BHL 8N-25HZ			0.00	0.00	7,303.32	842.83	5,153.43	14,629,210.80	1,656,176.86	40.2814020°N	104.9434911°W
	- actual wellpath hits target center										
	- Point										

Design Annotations

Measured Depth (usft)	Vertical Depth (usft)	Local Coordinates +N/-S (usft)	+E/-W (usft)	Comment
7,759.00	7,275.82	834.52	-511.48	Land Box Entry
7,826.00	7,277.56	834.20	-444.53	LP
8,619.75	7,278.57	842.12	348.97	Section Line Entry