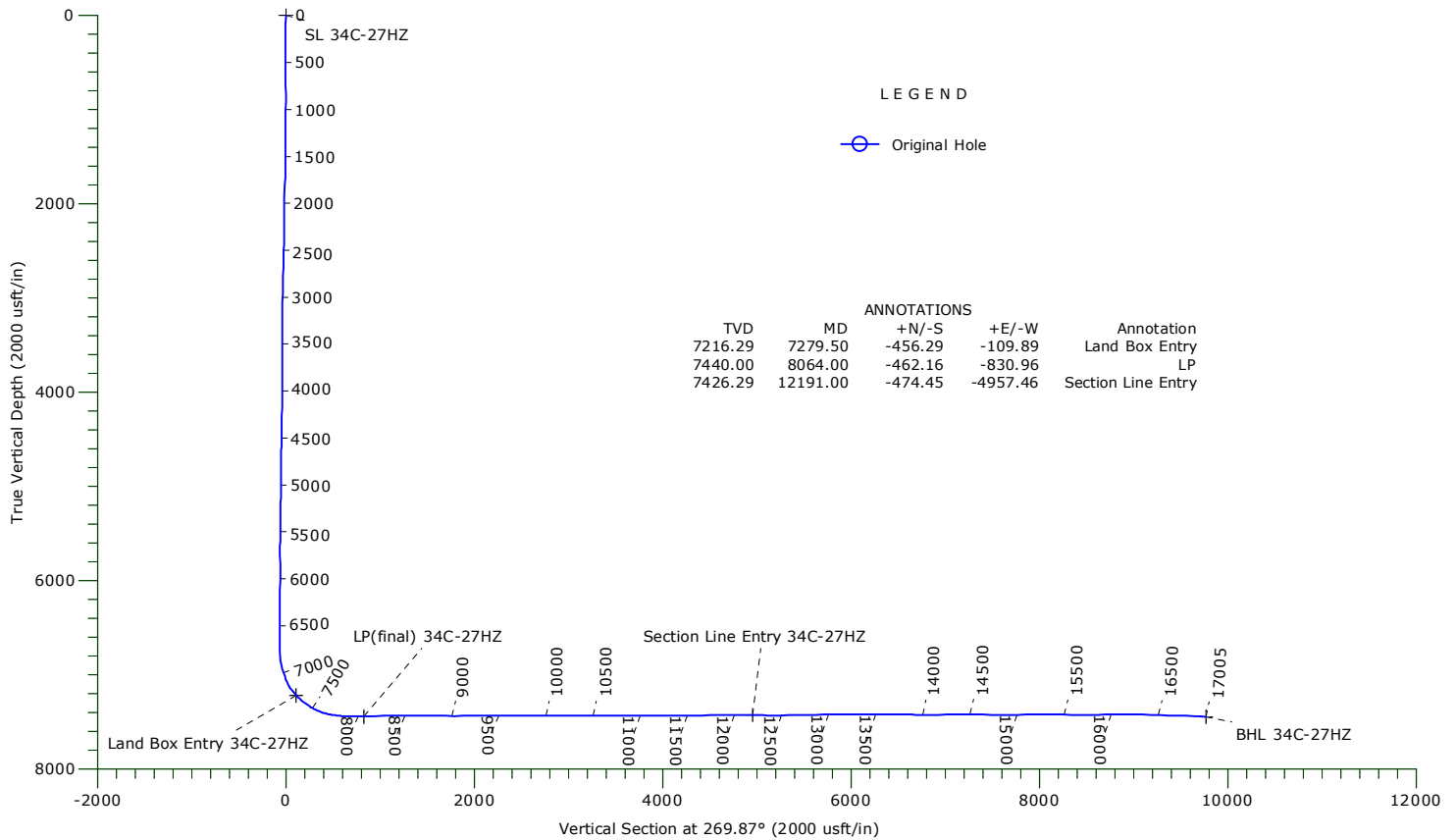
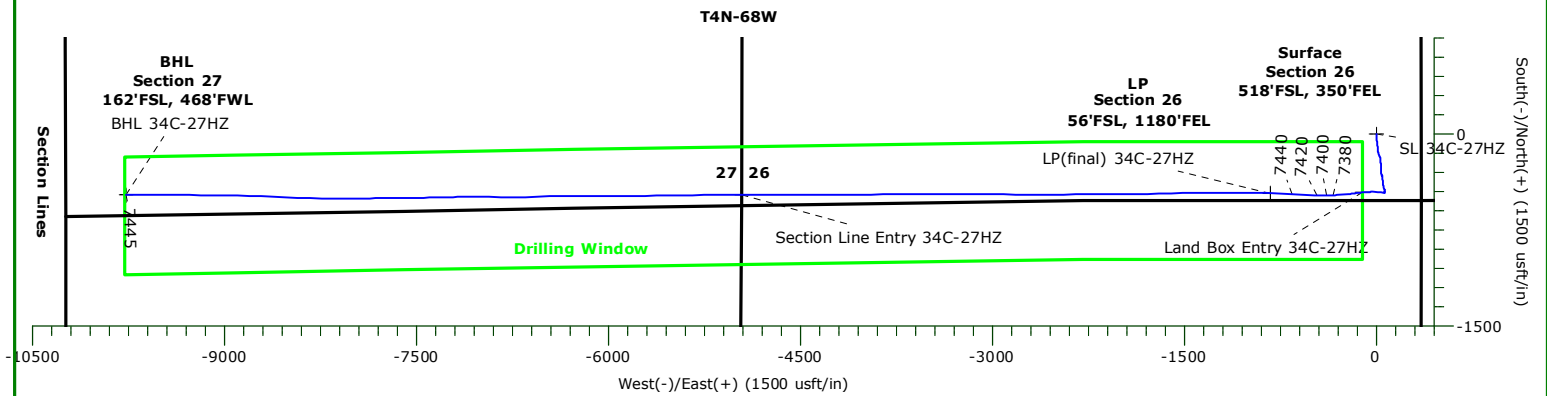




US ROCKIES WATTENBERG PLANNING

Project: WELD-NAD83-UTMFT13N
 Site: Wilson Ranch 16-26HZ Pad
 Well: Wilson Ranch #34C-27HZ
 Wellbore: Original Hole
 Design: Original Hole



WELLBORE TARGET DETAILS

Name	TVD	+N/-S	+E/-W	Northing	Easting	Latitude	Longitude	Shape
SL 34C-27HZ	0.00	0.00	0.00	14628260.91	1651023.01	40° 16' 43.68 N	104° 57' 43.10 W	Point
Land Box Entry 34C-27HZ	7216.29	-456.29	-109.89	14627804.58	1650913.31	40° 16' 39.17 N	104° 57' 44.52 W	Point
Section Line Entry 34C-27HZ	7426.29	-474.45	-4957.46	14627784.33	1646065.75	40° 16' 38.99 N	104° 58' 47.09 W	Point
LP(final) 34C-27HZ	7440.00	-462.16	-830.97	14627798.39	1650192.24	40° 16' 39.11 N	104° 57' 53.82 W	Point
BHL 34C-27HZ	7444.58	-475.60	-9769.46	14627781.12	1641253.75	40° 16' 38.96 N	104° 59' 49.20 W	Point

Precision Drilling Corporation

Survey Report

Company: US ROCKIES WATTENBERG PLANNING	Local Co-ordinate Reference: Well Wilson Ranch #34C-27HZ
Project: WELD-NAD83-UTMFT13N	TVD Reference: 5072'GL+20'KB @ 5092.00usft (PD460)
Site: Wilson Ranch 16-26HZ Pad	MD Reference: 5072'GL+20'KB @ 5092.00usft (PD460)
Well: Wilson Ranch #34C-27HZ	North Reference: True
Wellbore: Original Hole	Survey Calculation Method: Minimum Curvature
Design: Original Hole	Database: Compass_US

Project WELD-NAD83-UTMFT13N	
Map System: Universal Transverse Mercator (US Survey Fee	System Datum: Mean Sea Level
Geo Datum: North American Datum 1983	
Map Zone: Zone 13N (108 W to 102 W)	

Site Wilson Ranch 16-26HZ Pad		
Site Position:	Northing: 14,628,290.77 usft	Latitude: 40° 16' 43.98 N
From: Lat/Long	Easting: 1,651,023.27 usft	Longitude: 104° 57' 43.10 W
Position Uncertainty: 0.00 usft	Slot Radius: 13.20 in	Grid Convergence: 0.02 °

Well Wilson Ranch #34C-27HZ		
Well Position +N/-S 0.00 usft	Northing: 14,628,260.91 usft	Latitude: 40° 16' 43.68 N
+E/-W 0.00 usft	Easting: 1,651,023.00 usft	Longitude: 104° 57' 43.10 W
Position Uncertainty 3.28 usft	Wellhead Elevation: 0.00 usft	Ground Level: 5,072.00 usft

Wellbore Original Hole

Magnetics	Model Name	Sample Date	Declination (°)	Dip Angle (°)	Field Strength (nT)
	IGRF2010	10/04/15	8.38	66.77	52,592

Design Original Hole

Audit Notes:			
Version: 1.0	Phase: ACTUAL	Tie On Depth:	0.00

Vertical Section:	Depth From (TVD) (usft)	+N/-S (usft)	+E/-W (usft)	Direction (°)
	0.00	0.00	0.00	269.87

Survey Program		Date	12/09/15	
From (usft)	To (usft)	Survey (Wellbore)	Tool Name	Description
10.00	1,795.00	Survey #1 (Original Hole)	APC_ISCWSA REV 2 MV Fixed:v2:standard declination	
1,931.00	16,937.00	Survey #2 (Original Hole)	APC_ISCWSA REV 2 MV Fixed:v2:crustal field declination	
17,005.00	17,005.00	Survey #3 (Original Hole)	APC_BLIND	OWSG BLIND

Measured Depth (usft)	Inclination (°)	Azimuth (°)	Vertical Depth (usft)	+N/-S (usft)	+E/-W (usft)	Vertical Section (usft)	Dogleg Rate (°/100usft)	Build Rate (°/100usft)	Turn Rate (°/100usft)	
0.00	0.00	0.00	0.00	0.00	0.00	0.00	0.00	0.00	0.00	
SL 34C-27HZ										
10.00	0.00	0.00	10.00	0.00	0.00	0.00	0.00	0.00	0.00	
96.00	0.24	85.50	96.00	0.01	0.18	-0.18	0.28	0.28	0.00	
187.00	0.11	53.94	187.00	0.08	0.44	-0.44	0.17	-0.14	-34.68	
276.00	0.36	153.91	276.00	-0.12	0.63	-0.63	0.44	0.28	112.33	
382.00	1.25	166.26	381.99	-1.54	1.05	-1.05	0.85	0.84	11.65	
472.00	1.56	180.23	471.96	-3.72	1.28	-1.27	0.51	0.34	15.52	
562.00	1.64	185.79	561.93	-6.23	1.15	-1.13	0.19	0.09	6.18	

Precision Drilling Corporation

Survey Report

Company:	US ROCKIES WATTENBERG PLANNING	Local Co-ordinate Reference:	Well Wilson Ranch #34C-27HZ
Project:	WELD-NAD83-UTMFT13N	TVD Reference:	5072'GL+20'KB @ 5092.00usft (PD460)
Site:	Wilson Ranch 16-26HZ Pad	MD Reference:	5072'GL+20'KB @ 5092.00usft (PD460)
Well:	Wilson Ranch #34C-27HZ	North Reference:	True
Wellbore:	Original Hole	Survey Calculation Method:	Minimum Curvature
Design:	Original Hole	Database:	Compass_US

Survey										
Measured Depth (usft)	Inclination (°)	Azimuth (°)	Vertical Depth (usft)	+N/-S (usft)	+E/-W (usft)	Vertical Section (usft)	Dogleg Rate (°/100usft)	Build Rate (°/100usft)	Turn Rate (°/100usft)	
652.00	2.58	185.38	651.86	-9.53	0.83	-0.81	1.04	1.04	-0.46	
742.00	3.01	191.46	741.76	-13.86	0.17	-0.14	0.58	0.48	6.76	
832.00	3.07	184.35	831.63	-18.58	-0.48	0.53	0.42	0.07	-7.90	
922.00	3.89	175.40	921.46	-24.02	-0.42	0.48	1.09	0.91	-9.94	
1,012.00	5.12	173.45	1,011.18	-31.06	0.28	-0.21	1.38	1.37	-2.17	
1,102.00	6.10	168.76	1,100.75	-39.74	1.67	-1.58	1.20	1.09	-5.21	
1,192.00	6.79	167.80	1,190.18	-49.63	3.73	-3.61	0.78	0.77	-1.07	
1,282.00	7.13	168.18	1,279.52	-60.29	6.00	-5.86	0.38	0.38	0.42	
1,373.00	6.27	179.60	1,369.90	-70.79	7.19	-7.03	1.74	-0.95	12.55	
1,463.00	5.77	174.22	1,459.41	-80.21	7.68	-7.49	0.84	-0.56	-5.98	
1,553.00	5.59	175.14	1,548.96	-89.08	8.50	-8.30	0.22	-0.20	1.02	
1,643.00	5.53	177.16	1,638.54	-97.78	9.09	-8.87	0.23	-0.07	2.24	
1,733.00	4.53	169.93	1,728.19	-105.61	9.93	-9.69	1.31	-1.11	-8.03	
1,795.00	4.63	166.87	1,790.00	-110.45	10.92	-10.67	0.43	0.16	-4.94	
1,931.00	3.87	176.85	1,925.62	-120.38	12.42	-12.15	0.78	-0.56	7.34	
2,025.00	3.52	178.96	2,019.43	-126.43	12.65	-12.36	0.40	-0.37	2.24	
2,118.00	5.54	181.59	2,112.13	-133.78	12.58	-12.27	2.18	2.17	2.83	
2,212.00	5.10	171.57	2,205.73	-142.45	13.06	-12.74	1.09	-0.47	-10.66	
2,306.00	4.84	159.62	2,299.38	-150.30	15.06	-14.72	1.13	-0.28	-12.71	
2,399.00	3.78	157.34	2,392.11	-156.80	17.60	-17.25	1.15	-1.14	-2.45	
2,493.00	5.01	157.34	2,485.84	-163.45	20.38	-20.01	1.31	1.31	0.00	
2,586.00	4.48	154.88	2,578.52	-170.49	23.49	-23.10	0.61	-0.57	-2.65	
2,681.00	5.98	167.88	2,673.12	-178.69	26.10	-25.69	2.00	1.58	13.68	
2,775.00	5.10	162.79	2,766.68	-187.46	28.36	-27.94	1.07	-0.94	-5.41	
2,868.00	6.07	171.05	2,859.24	-196.27	30.35	-29.91	1.35	1.04	8.88	
2,960.00	5.19	166.48	2,950.80	-205.12	32.08	-31.62	1.07	-0.96	-4.97	
3,053.00	5.89	180.19	3,043.37	-213.98	33.05	-32.56	1.60	0.75	14.74	
3,145.00	4.84	172.28	3,134.96	-222.55	33.55	-33.05	1.39	-1.14	-8.60	
3,238.00	4.40	167.36	3,227.66	-229.92	34.86	-34.34	0.64	-0.47	-5.29	
3,330.00	5.72	179.84	3,319.30	-237.95	35.65	-35.11	1.86	1.43	13.57	
3,423.00	4.92	178.25	3,411.90	-246.57	35.78	-35.22	0.87	-0.86	-1.71	
3,515.00	3.87	176.15	3,503.63	-253.61	36.11	-35.54	1.15	-1.14	-2.28	
3,609.00	5.45	179.13	3,597.32	-261.24	36.39	-35.80	1.70	1.68	3.17	
3,702.00	5.01	179.84	3,689.93	-269.71	36.47	-35.86	0.48	-0.47	0.76	
3,796.00	4.84	179.66	3,783.58	-277.78	36.51	-35.87	0.18	-0.18	-0.19	
3,889.00	4.75	176.67	3,876.26	-285.55	36.75	-36.10	0.29	-0.10	-3.22	
3,983.00	4.66	174.74	3,969.94	-293.24	37.33	-36.66	0.19	-0.10	-2.05	
4,077.00	3.96	175.97	4,063.67	-300.28	37.91	-37.23	0.75	-0.74	1.31	
4,171.00	5.45	169.11	4,157.35	-307.90	38.98	-38.28	1.69	1.59	-7.30	
4,265.00	5.10	167.18	4,250.96	-316.36	40.75	-40.03	0.42	-0.37	-2.05	
4,358.00	4.04	163.14	4,343.66	-323.53	42.62	-41.88	1.19	-1.14	-4.34	
4,450.00	5.80	170.52	4,435.32	-331.21	44.32	-43.57	2.03	1.91	8.02	
4,543.00	5.19	170.87	4,527.89	-340.00	45.76	-44.99	0.66	-0.66	0.38	

Precision Drilling Corporation

Survey Report

Company:	US ROCKIES WATTENBERG PLANNING	Local Co-ordinate Reference:	Well Wilson Ranch #34C-27HZ
Project:	WELD-NAD83-UTMFT13N	TVD Reference:	5072'GL+20'KB @ 5092.00usft (PD460)
Site:	Wilson Ranch 16-26HZ Pad	MD Reference:	5072'GL+20'KB @ 5092.00usft (PD460)
Well:	Wilson Ranch #34C-27HZ	North Reference:	True
Wellbore:	Original Hole	Survey Calculation Method:	Minimum Curvature
Design:	Original Hole	Database:	Compass_US

Survey

Measured Depth (usft)	Inclination (°)	Azimuth (°)	Vertical Depth (usft)	+N-S (usft)	+E-W (usft)	Vertical Section (usft)	Dogleg Rate (°/100usft)	Build Rate (°/100usft)	Turn Rate (°/100usft)
4,635.00	4.04	167.36	4,619.59	-347.27	47.13	-46.34	1.29	-1.25	-3.82
4,728.00	6.07	171.40	4,712.22	-355.33	48.58	-47.78	2.21	2.18	4.34
4,820.00	6.07	172.63	4,803.71	-364.96	49.94	-49.11	0.14	0.00	1.34
4,912.00	5.63	175.79	4,895.23	-374.29	50.89	-50.04	0.59	-0.48	3.43
5,005.00	4.92	174.91	4,987.84	-382.81	51.58	-50.71	0.77	-0.76	-0.95
5,097.00	4.13	173.16	5,079.55	-390.03	52.32	-51.44	0.87	-0.86	-1.90
5,189.00	5.45	174.04	5,171.22	-397.67	53.17	-52.27	1.44	1.43	0.96
5,282.00	4.84	174.39	5,263.85	-405.96	54.02	-53.09	0.66	-0.66	0.38
5,374.00	4.31	171.22	5,355.56	-413.24	54.92	-53.98	0.64	-0.58	-3.45
5,466.00	5.80	164.37	5,447.20	-421.14	56.70	-55.75	1.74	1.62	-7.45
5,558.00	5.01	164.19	5,538.79	-429.48	59.05	-58.07	0.86	-0.86	-0.20
5,652.00	3.96	157.51	5,632.50	-436.43	61.41	-60.42	1.25	-1.12	-7.11
5,744.00	4.40	189.33	5,724.27	-442.84	62.05	-61.05	2.53	0.48	34.59
5,838.00	3.61	190.56	5,818.03	-449.31	60.93	-59.91	0.85	-0.84	1.31
5,931.00	1.41	194.78	5,910.94	-453.30	60.10	-59.07	2.37	-2.37	4.54
6,026.00	1.23	120.77	6,005.92	-454.95	60.67	-59.64	1.68	-0.19	-77.91
6,119.00	0.88	138.88	6,098.91	-456.00	62.00	-60.97	0.52	-0.38	19.47
6,213.00	0.44	152.59	6,192.90	-456.86	62.64	-61.61	0.49	-0.47	14.59
6,307.00	0.35	160.85	6,286.90	-457.45	62.90	-61.87	0.11	-0.10	8.79
6,402.00	0.18	164.02	6,381.90	-457.87	63.04	-62.00	0.18	-0.18	3.34
6,495.00	0.18	237.84	6,474.90	-458.09	62.96	-61.92	0.23	0.00	79.38
6,587.00	0.26	280.38	6,566.89	-458.13	62.63	-61.59	0.19	0.09	46.24
6,680.00	0.35	245.58	6,659.89	-458.21	62.16	-61.12	0.22	0.10	-37.42
6,773.00	0.53	268.43	6,752.89	-458.34	61.47	-60.43	0.27	0.19	24.57
6,867.00	6.51	273.35	6,846.67	-458.04	55.71	-54.68	6.36	6.36	5.23
6,960.00	14.33	273.88	6,938.07	-456.95	38.94	-37.91	8.41	8.41	0.57
7,052.00	21.72	279.68	7,025.50	-453.31	10.76	-9.73	8.26	8.03	6.30
7,147.00	29.55	268.61	7,111.13	-450.92	-30.07	31.10	9.63	8.24	-11.65
7,240.00	40.80	265.44	7,187.03	-453.90	-83.46	84.49	12.25	12.10	-3.41
7,279.50	43.61	264.27	7,216.28	-456.29	-109.88	110.92	7.38	7.11	-2.97
Land Box Entry 34C-27HZ									
7,335.00	47.57	262.81	7,255.12	-460.76	-149.27	150.31	7.38	7.14	-2.63
7,430.00	54.78	264.56	7,314.64	-468.84	-222.78	223.85	7.72	7.59	1.84
7,525.00	63.22	265.27	7,363.53	-476.03	-303.82	304.90	8.91	8.88	0.75
7,619.00	70.79	269.49	7,400.24	-479.89	-390.18	391.27	9.05	8.05	4.49
7,714.00	81.95	271.77	7,422.59	-478.84	-482.34	483.43	11.98	11.75	2.40
7,807.00	84.15	273.35	7,433.84	-474.71	-574.56	575.63	2.91	2.37	1.70
7,901.00	87.85	273.00	7,440.40	-469.52	-668.17	669.23	3.95	3.94	-0.37
7,996.00	90.84	272.83	7,441.49	-464.69	-763.03	764.08	3.15	3.15	-0.18
8,064.00	91.66	271.43	7,440.00	-462.16	-830.97	832.01	2.39	1.21	-2.06
LP(final) 34C-27HZ									
8,090.00	91.98	270.89	7,439.17	-461.64	-856.95	857.99	2.39	1.21	-2.06
8,185.00	91.28	271.42	7,436.47	-459.72	-951.89	952.93	0.92	-0.74	0.56
8,280.00	90.75	270.19	7,434.79	-458.39	-1,046.86	1,047.90	1.41	-0.56	-1.29

Precision Drilling Corporation

Survey Report

Company:	US ROCKIES WATTENBERG PLANNING	Local Co-ordinate Reference:	Well Wilson Ranch #34C-27HZ
Project:	WELD-NAD83-UTMFT13N	TVD Reference:	5072'GL+20'KB @ 5092.00usft (PD460)
Site:	Wilson Ranch 16-26HZ Pad	MD Reference:	5072'GL+20'KB @ 5092.00usft (PD460)
Well:	Wilson Ranch #34C-27HZ	North Reference:	True
Wellbore:	Original Hole	Survey Calculation Method:	Minimum Curvature
Design:	Original Hole	Database:	Compass_US

Survey

Measured Depth (usft)	Inclination (°)	Azimuth (°)	Vertical Depth (usft)	+N/-S (usft)	+E/-W (usft)	Vertical Section (usft)	Dogleg Rate (°/100usft)	Build Rate (°/100usft)	Turn Rate (°/100usft)
8,373.00	88.99	270.01	7,435.00	-458.23	-1,139.86	1,140.89	1.90	-1.89	-0.19
8,466.00	89.78	270.01	7,436.00	-458.21	-1,232.85	1,233.89	0.85	0.85	0.00
8,561.00	90.84	270.19	7,435.48	-458.04	-1,327.85	1,328.88	1.13	1.12	0.19
8,653.00	89.43	269.31	7,435.27	-458.45	-1,419.84	1,420.88	1.81	-1.53	-0.96
8,746.00	89.69	268.78	7,435.98	-460.00	-1,512.83	1,513.87	0.63	0.28	-0.57
8,838.00	90.57	268.43	7,435.77	-462.24	-1,604.80	1,605.84	1.03	0.96	-0.38
8,931.00	89.25	268.78	7,435.92	-464.50	-1,697.77	1,698.82	1.47	-1.42	0.38
9,024.00	90.13	268.61	7,436.42	-466.62	-1,790.74	1,791.80	0.96	0.95	-0.18
9,117.00	91.36	268.96	7,435.21	-468.59	-1,883.71	1,884.77	1.38	1.32	0.38
9,209.00	90.13	269.13	7,434.02	-470.12	-1,975.69	1,976.75	1.35	-1.34	0.18
9,301.00	90.92	269.31	7,433.17	-471.37	-2,067.68	2,068.74	0.88	0.86	0.20
9,395.00	90.22	270.01	7,432.24	-471.93	-2,161.67	2,162.73	1.05	-0.74	0.74
9,488.00	90.84	270.01	7,431.38	-471.92	-2,254.66	2,255.73	0.67	0.67	0.00
9,583.00	88.81	269.66	7,431.67	-472.19	-2,349.66	2,350.72	2.17	-2.14	-0.37
9,677.00	88.99	268.96	7,433.47	-473.32	-2,443.63	2,444.70	0.77	0.19	-0.74
9,771.00	90.04	269.49	7,434.27	-474.59	-2,537.62	2,538.69	1.25	1.12	0.56
9,866.00	91.10	270.72	7,433.32	-474.42	-2,632.61	2,633.68	1.71	1.12	1.29
9,960.00	89.43	270.01	7,432.89	-473.82	-2,726.61	2,727.67	1.93	-1.78	-0.76
10,054.00	90.13	270.72	7,433.25	-473.22	-2,820.60	2,821.67	1.06	0.74	0.76
10,148.00	90.84	270.54	7,432.45	-472.19	-2,914.59	2,915.66	0.78	0.76	-0.19
10,242.00	91.10	270.36	7,430.86	-471.45	-3,008.58	3,009.64	0.34	0.28	-0.19
10,336.00	89.16	270.01	7,430.65	-471.15	-3,102.57	3,103.63	2.10	-2.06	-0.37
10,430.00	89.34	270.19	7,431.88	-470.98	-3,196.56	3,197.62	0.27	0.19	0.19
10,524.00	89.69	270.19	7,432.67	-470.67	-3,290.56	3,291.62	0.37	0.37	0.00
10,617.00	89.78	270.19	7,433.10	-470.36	-3,383.56	3,384.61	0.10	0.10	0.00
10,711.00	89.78	269.84	7,433.47	-470.34	-3,477.56	3,478.61	0.37	0.00	-0.37
10,805.00	89.43	269.13	7,434.11	-471.18	-3,571.55	3,572.61	0.84	-0.37	-0.76
10,899.00	90.40	270.19	7,434.25	-471.74	-3,665.54	3,666.61	1.53	1.03	1.13
10,993.00	90.40	270.01	7,433.60	-471.58	-3,759.54	3,760.60	0.19	0.00	-0.19
11,087.00	90.31	269.31	7,433.01	-472.13	-3,853.54	3,854.60	0.75	-0.10	-0.74
11,180.00	90.22	269.31	7,432.58	-473.25	-3,946.53	3,947.59	0.10	-0.10	0.00
11,274.00	90.13	269.66	7,432.30	-474.10	-4,040.53	4,041.59	0.38	-0.10	0.37
11,368.00	89.96	268.78	7,432.22	-475.38	-4,134.52	4,135.58	0.95	-0.18	-0.94
11,462.00	90.40	269.66	7,431.93	-476.66	-4,228.51	4,229.58	1.05	0.47	0.94
11,556.00	90.66	270.54	7,431.06	-476.49	-4,322.50	4,323.57	0.98	0.28	0.94
11,651.00	90.57	269.66	7,430.04	-476.33	-4,417.49	4,418.56	0.93	-0.09	-0.93
11,743.00	90.22	270.36	7,429.40	-476.31	-4,509.49	4,510.56	0.85	-0.38	0.76
11,836.00	90.40	270.36	7,428.90	-475.73	-4,602.49	4,603.56	0.19	0.19	0.00
11,928.00	90.22	270.01	7,428.40	-475.43	-4,694.49	4,695.55	0.43	-0.20	-0.38
12,021.00	90.57	270.01	7,427.76	-475.41	-4,787.48	4,788.55	0.38	0.38	0.00
12,113.00	91.19	270.72	7,426.35	-474.83	-4,879.47	4,880.53	1.02	0.67	0.77
12,191.00	88.90	269.83	7,426.29	-474.45	-4,957.46	4,958.53	3.15	-2.94	-1.14

Section Line Entry 34C-27HZ

Precision Drilling Corporation

Survey Report

Company:	US ROCKIES WATTENBERG PLANNING	Local Co-ordinate Reference:	Well Wilson Ranch #34C-27HZ
Project:	WELD-NAD83-UTMFT13N	TVD Reference:	5072'GL+20'KB @ 5092.00usft (PD460)
Site:	Wilson Ranch 16-26HZ Pad	MD Reference:	5072'GL+20'KB @ 5092.00usft (PD460)
Well:	Wilson Ranch #34C-27HZ	North Reference:	True
Wellbore:	Original Hole	Survey Calculation Method:	Minimum Curvature
Design:	Original Hole	Database:	Compass_US

Survey									
Measured Depth (usft)	Inclination (°)	Azimuth (°)	Vertical Depth (usft)	+N/-S (usft)	+E/-W (usft)	Vertical Section (usft)	Dogleg Rate (°/100usft)	Build Rate (°/100usft)	Turn Rate (°/100usft)
12,206.00	88.46	269.66	7,426.63	-474.52	-4,972.46	4,973.52	3.15	-2.94	-1.14
12,300.00	88.46	269.49	7,429.16	-475.22	-5,066.42	5,067.49	0.18	0.00	-0.18
12,393.00	89.87	269.66	7,430.52	-475.91	-5,159.41	5,160.47	1.53	1.52	0.18
12,486.00	90.75	269.49	7,430.01	-476.60	-5,252.40	5,253.47	0.96	0.95	-0.18
12,579.00	91.10	269.49	7,428.51	-477.42	-5,345.39	5,346.46	0.38	0.38	0.00
12,671.00	91.89	269.31	7,426.11	-478.39	-5,437.35	5,438.42	0.88	0.86	-0.20
12,764.00	90.75	269.31	7,423.97	-479.51	-5,530.32	5,531.39	1.23	-1.23	0.00
12,856.00	90.22	269.31	7,423.19	-480.61	-5,622.31	5,623.38	0.58	-0.58	0.00
12,949.00	91.36	269.31	7,421.91	-481.73	-5,715.29	5,716.37	1.23	1.23	0.00
13,042.00	89.78	269.31	7,420.98	-482.85	-5,808.27	5,809.36	1.70	-1.70	0.00
13,134.00	89.69	270.36	7,421.41	-483.12	-5,900.27	5,901.35	1.15	-0.10	1.14
13,227.00	90.22	270.01	7,421.48	-482.82	-5,993.27	5,994.35	0.68	0.57	-0.38
13,319.00	91.10	269.66	7,420.42	-483.08	-6,085.26	6,086.34	1.03	0.96	-0.38
13,414.00	89.43	270.36	7,419.98	-483.07	-6,180.26	6,181.34	1.91	-1.76	0.74
13,506.00	90.13	269.49	7,420.33	-483.19	-6,272.26	6,273.34	1.21	0.76	-0.95
13,600.00	90.66	268.96	7,419.69	-484.46	-6,366.24	6,367.33	0.80	0.56	-0.56
13,694.00	91.19	268.43	7,418.17	-486.60	-6,460.21	6,461.29	0.80	0.56	-0.56
13,788.00	88.55	268.08	7,418.38	-489.46	-6,554.16	6,555.25	2.83	-2.81	-0.37
13,883.00	87.14	268.61	7,421.95	-492.20	-6,649.05	6,650.15	1.59	-1.48	0.56
13,978.00	89.52	269.49	7,424.72	-493.78	-6,743.98	6,745.09	2.67	2.51	0.93
14,072.00	90.92	271.24	7,424.36	-493.18	-6,837.98	6,839.08	2.38	1.49	1.86
14,166.00	91.54	270.89	7,422.34	-491.43	-6,931.94	6,933.03	0.76	0.66	-0.37
14,259.00	92.24	270.89	7,419.28	-489.99	-7,024.87	7,025.97	0.75	0.75	0.00
14,351.00	90.75	269.13	7,416.88	-489.97	-7,116.84	7,117.93	2.51	-1.62	-1.91
14,445.00	89.16	267.90	7,416.95	-492.41	-7,210.80	7,211.90	2.14	-1.69	-1.31
14,540.00	88.90	269.49	7,418.56	-494.57	-7,305.76	7,306.86	1.70	-0.27	1.67
14,633.00	88.11	268.25	7,420.99	-496.41	-7,398.71	7,399.81	1.58	-0.85	-1.33
14,725.00	87.85	269.31	7,424.23	-498.36	-7,490.63	7,491.74	1.19	-0.28	1.15
14,818.00	90.13	270.36	7,425.87	-498.63	-7,583.61	7,584.72	2.70	2.45	1.13
14,910.00	91.01	269.13	7,424.95	-499.04	-7,675.60	7,676.71	1.64	0.96	-1.34
15,006.00	91.36	268.25	7,422.97	-501.23	-7,771.55	7,772.67	0.99	0.36	-0.92
15,099.00	90.57	269.31	7,421.40	-503.21	-7,864.51	7,865.64	1.42	-0.85	1.14
15,192.00	90.31	270.01	7,420.69	-503.77	-7,957.51	7,958.63	0.80	-0.28	0.75
15,287.00	90.57	268.96	7,419.96	-504.62	-8,052.50	8,053.63	1.14	0.27	-1.11
15,382.00	89.08	271.24	7,420.25	-504.45	-8,147.49	8,148.62	2.87	-1.57	2.40
15,476.00	88.90	270.36	7,421.90	-503.14	-8,241.47	8,242.59	0.96	-0.19	-0.94
15,570.00	89.34	272.12	7,423.35	-501.11	-8,335.43	8,336.55	1.93	0.47	1.87
15,664.00	90.04	272.65	7,423.86	-497.20	-8,429.35	8,430.45	0.93	0.74	0.56
15,758.00	90.31	272.12	7,423.57	-493.28	-8,523.26	8,524.36	0.63	0.29	-0.56
15,853.00	91.10	272.12	7,422.40	-489.77	-8,618.19	8,619.28	0.83	0.83	0.00
15,947.00	90.48	271.95	7,421.10	-486.43	-8,712.12	8,713.20	0.68	-0.66	-0.18
16,041.00	90.84	271.59	7,420.02	-483.53	-8,806.07	8,807.15	0.54	0.38	-0.38
16,135.00	91.10	271.07	7,418.43	-481.35	-8,900.03	8,901.10	0.62	0.28	-0.55
16,229.00	88.64	270.72	7,418.64	-479.88	-8,994.01	8,995.08	2.64	-2.62	-0.37

Precision Drilling Corporation

Survey Report

Company:	US ROCKIES WATTENBERG PLANNING	Local Co-ordinate Reference:	Well Wilson Ranch #34C-27HZ
Project:	WELD-NAD83-UTMFT13N	TVD Reference:	5072'GL+20'KB @ 5092.00usft (PD460)
Site:	Wilson Ranch 16-26HZ Pad	MD Reference:	5072'GL+20'KB @ 5092.00usft (PD460)
Well:	Wilson Ranch #34C-27HZ	North Reference:	True
Wellbore:	Original Hole	Survey Calculation Method:	Minimum Curvature
Design:	Original Hole	Database:	Compass_US

Survey

Measured Depth (usft)	Inclination (°)	Azimuth (°)	Vertical Depth (usft)	+N/-S (usft)	+E/-W (usft)	Vertical Section (usft)	Dogleg Rate (°/100usft)	Build Rate (°/100usft)	Turn Rate (°/100usft)
16,324.00	87.85	270.72	7,421.55	-478.69	-9,088.96	9,090.02	0.83	-0.83	0.00
16,418.00	87.76	270.36	7,425.15	-477.80	-9,182.89	9,183.95	0.39	-0.10	-0.38
16,510.00	87.85	270.89	7,428.68	-476.80	-9,274.81	9,275.87	0.58	0.10	0.58
16,604.00	88.55	271.07	7,431.63	-475.19	-9,368.75	9,369.81	0.77	0.74	0.19
16,697.00	89.52	270.72	7,433.20	-473.74	-9,461.73	9,462.78	1.11	1.04	-0.38
16,792.00	88.02	270.54	7,435.23	-472.69	-9,556.70	9,557.74	1.59	-1.58	-0.19
16,887.00	87.23	269.13	7,439.17	-472.97	-9,651.61	9,652.66	1.70	-0.83	-1.48
16,937.00	87.41	268.61	7,441.51	-473.95	-9,701.55	9,702.60	1.10	0.36	-1.04
17,005.00	87.41	268.61	7,444.58	-475.60	-9,769.46	9,770.51	0.00	0.00	0.00

BHL 34C-27HZ

Design Targets

Target Name	Dip Angle (°)	Dip Dir. (°)	TVD (usft)	+N/-S (usft)	+E/-W (usft)	Northing (usft)	Easting (usft)	Latitude	Longitude
SL 34C-27HZ - hit/miss target - Shape - actual wellpath hits target center - Point	0.00	0.00	0.00	0.00	0.00	14,628,260.91	1,651,023.00	40° 16' 43.68 N	104° 57' 43.10 W
Land Box Entry 34C-2 - actual wellpath hits target center - Point	0.00	0.00	7,216.29	-456.29	-109.89	14,627,804.57	1,650,913.31	40° 16' 39.17 N	104° 57' 44.52 W
Section Line Entry 34C - actual wellpath hits target center - Point	0.00	0.00	7,426.29	-474.45	-4,957.46	14,627,784.33	1,646,065.74	40° 16' 38.99 N	104° 58' 47.09 W
LP(final) 34C-27HZ - actual wellpath hits target center - Point	0.00	0.00	7,440.00	-462.16	-830.97	14,627,798.39	1,650,192.24	40° 16' 39.11 N	104° 57' 53.82 W
BHL 34C-27HZ - actual wellpath hits target center - Point	0.00	0.00	7,444.58	-475.60	-9,769.46	14,627,781.12	1,641,253.75	40° 16' 38.96 N	104° 59' 49.20 W

Design Annotations

Measured Depth (usft)	Vertical Depth (usft)	Local Coordinates		Comment
		+N/-S (usft)	+E/-W (usft)	
7,279.50	7,216.29	-456.29	-109.89	Land Box Entry
8,064.00	7,440.00	-462.16	-830.96	LP
12,191.00	7,426.29	-474.45	-4,957.46	Section Line Entry