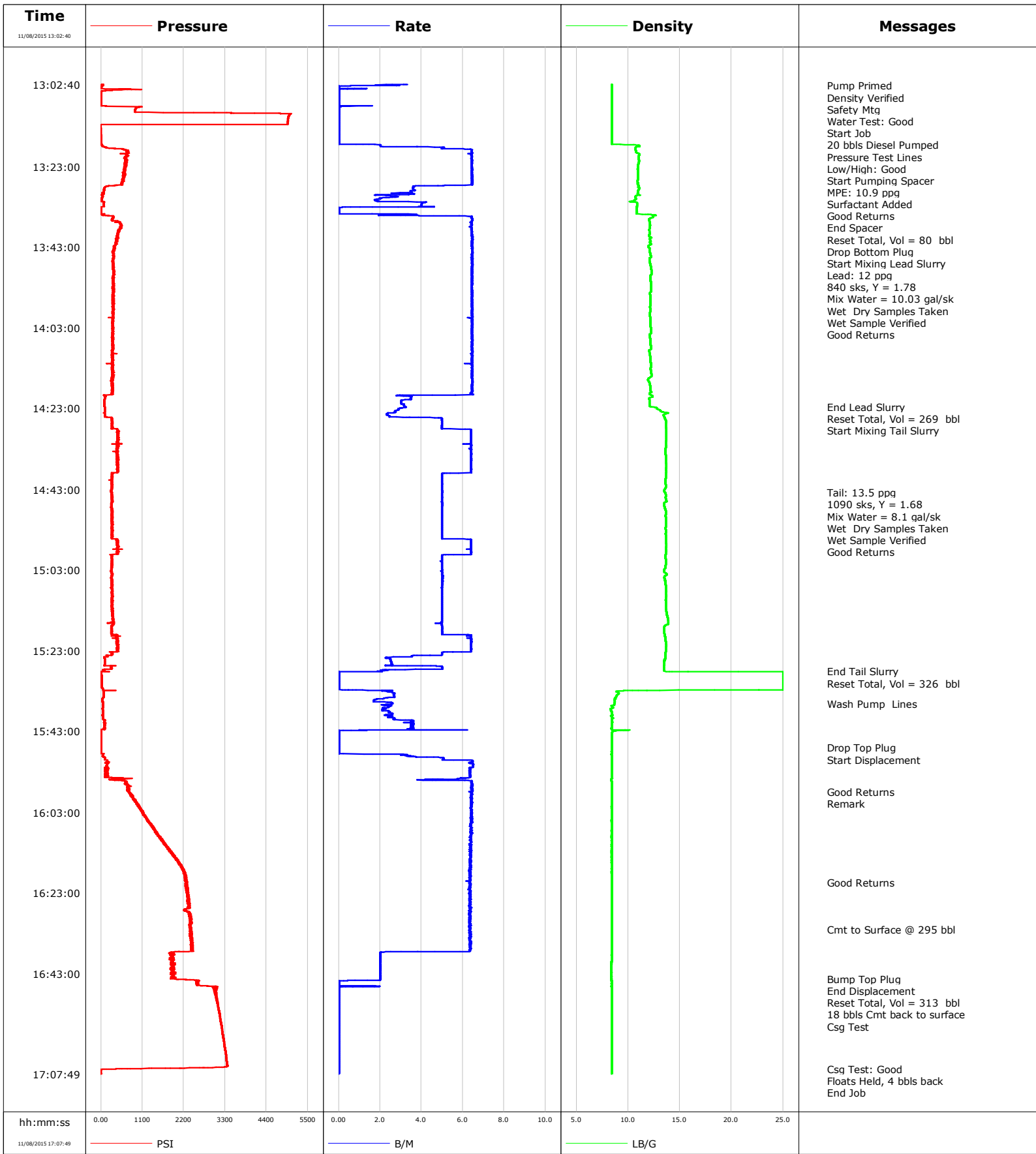


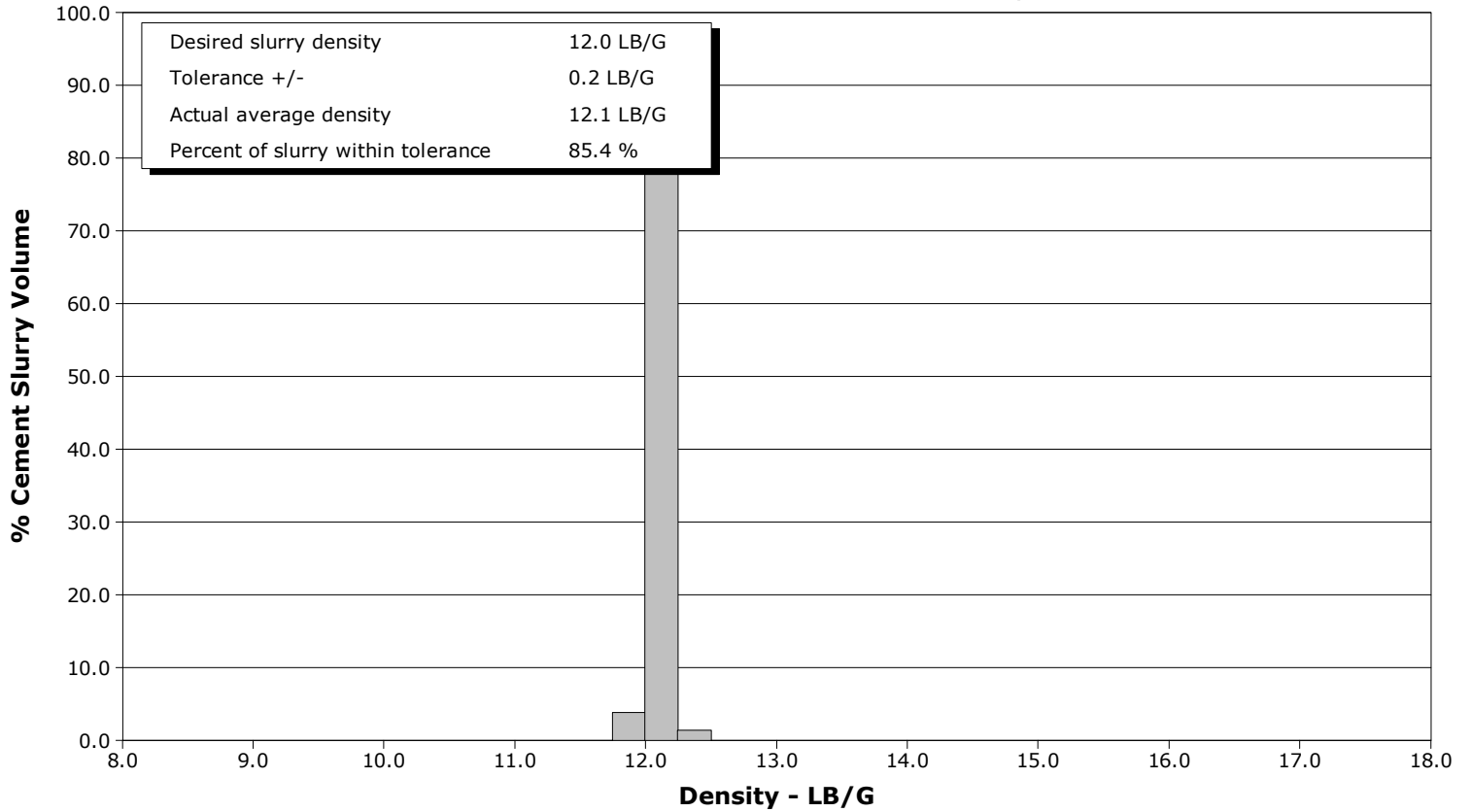
<b>Well</b>	Whisper Rock 4C-25HZ	<b>Client</b>	Anadarko
<b>Field</b>	Wattenberg	<b>SIR No.</b>	DAXH-00496
<b>Engineer</b>	Matlock/Evans	<b>Job Type</b>	Production
<b>Country</b>	United States	<b>Job Date</b>	11-08-2015



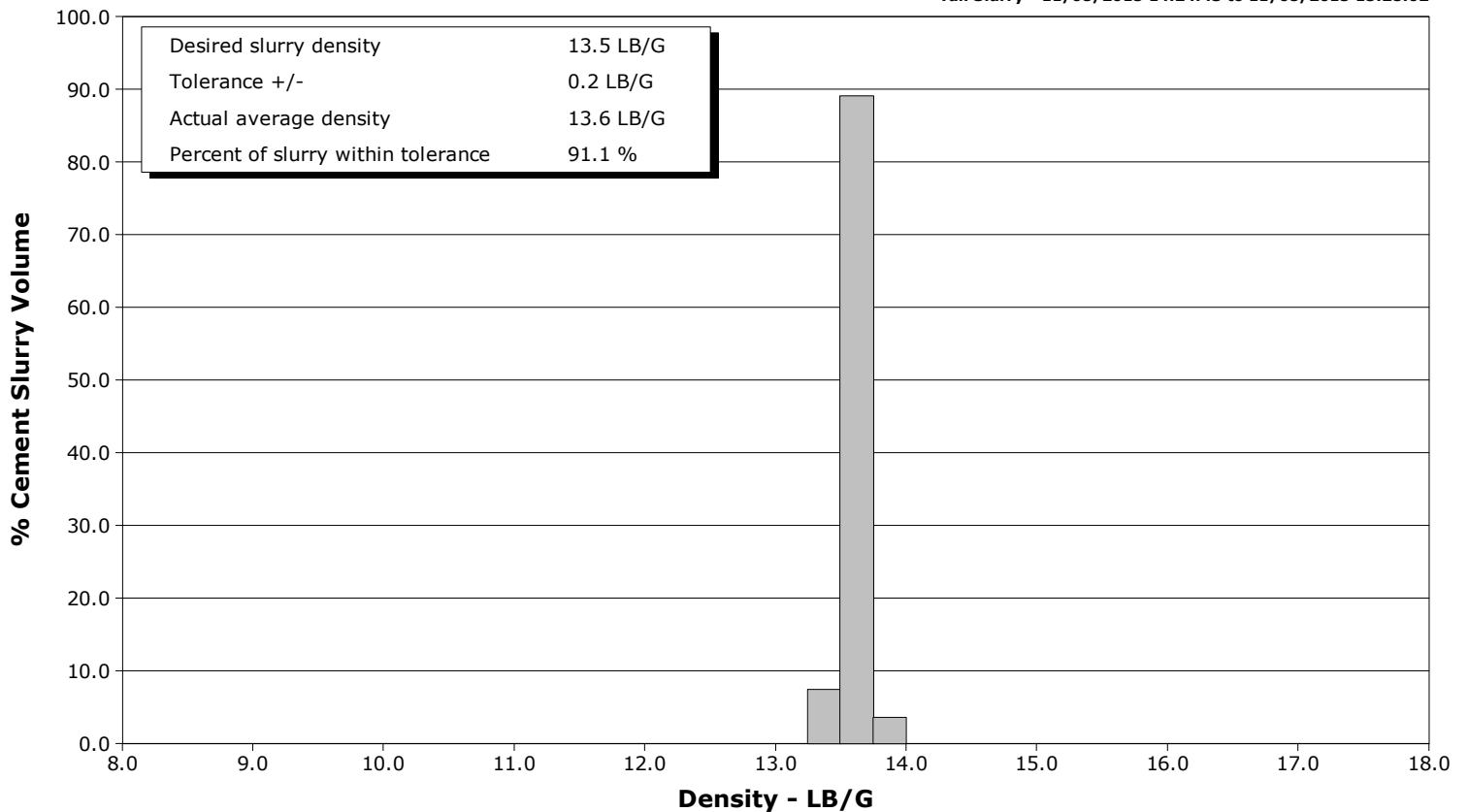
**Well** Whisper Rock 4C-25HZ  
**Field** Wattenberg  
**Engineer** Matlock/Evans  
**Country** United States

**Client** Anadarko  
**SIR No.** DAXH-00496  
**Job Type** Production  
**Job Date** 11-08-2015

**Lead Slurry - 11/08/2015 13:36:00 to 11/08/2015 14:22:30**



**Tail Slurry - 11/08/2015 14:24:43 to 11/08/2015 15:28:02**



				Customer			Job Number				
				Anadarko			DAXH-00496				
Well		Location (legal)			Schlumberger Location			Job Start			
Whisper Rock 4C-25HZ					Cheyenne			Nov/08/2015			
Field		Formation Name/Type			Deviation	Bit Size	Well MD		Well TVD		
Wattenberg					deg	8.5 in	13590.0 ft		7430.0 ft		
County		State/Province			BHP	BHST	BHCT	Pore Press. Gradient			
Weld		CO			psi	231 degF	230 degF	lb/gal			
Well Master		API/UWI									
0631620736		05123410690000									
Rig Name	Drilled For		Service Via		Casing/Liner						
Precision 460	Gas		Land		Depth, ft	Size, in	Weight, lb/ft	Grade	Thread		
Offshore Zone	Well Class		Well Type		13590.0	5.5	17.0	P-110			
	New		Development		0.0	0.0	0.0				
Drilling Fluid Type		Max. Density	Plastic Viscosity		Tubing/Drill Pipe						
		lb/gal	cP		T/D	Depth, ft	Size, in	Weight, lb/ft	Grade	Thread	
Service Line	Job Type										
Cementing	Production										
Max. Allowed Tub. Press	Max. Allowed Ann. Press		WH Connection		Perforations/Open Hole						
psi	psi		Double Cement head		Top, ft	Bottom, ft	shot/ft	No. of Shots	Total Interval		
					ft	ft			ft		
					ft	ft			Diameter		
					ft	ft			in		
Service Instructions		Treat Down	Displacement		Packer Type		Packer Depth				
9 5/8" 36# Previous Casing: 1,859' 8 1/2" to TD // OH Excess: 4% Top of Lead Cement: Surface Top of Tail Cement: 6,000' TD: 13,575' (7430') Shoe Joint: 93'		Casing	313.2 bbl				ft				
		Tubing Vol.	Casing Vol.		Annular Vol.		Openhole Vol.				
		bbl	bbl		bbl		bbl				
Casing/Tubing Secured		1 Hole Vol. Circulated prior to Cement			Casing Tools			Squeeze Job			
<input checked="" type="checkbox"/>		<input checked="" type="checkbox"/>									
Lift Pressure		Shoe Type			Shoe Depth		Squeeze Type				
psi		Float			13590.0 ft						
Pipe Rotated		Pipe Reciprocated			Stage Tool Type			Tool Depth			
<input type="checkbox"/>		<input type="checkbox"/>						ft			
No. Centralizers		Top Plugs	Bottom Plugs		Stage Tool Depth			Tail Pipe Size			
229		1	1		ft			in			
Cement Head Type		Job Scheduled For			Arrived on Location		Leave Location		Collar Type		Tail Pipe Depth
Double		Nov/08/2015 00:05			Nov/08/2015 05:00		Nov/08/2015 19:00		Float		ft
		Collar Depth			Sqz. Total Vol.			bbl			
		13502.0 ft									
Date	Time 24-hr clock	Treating Pressure PSI	Flow Rate B/M	Density LB/G	Volume BBL	Solid Fraction NULL	Message				
11/08/2015	13:02:40	59	3.4	8.40	1.8	0					
11/08/2015	13:03:00	36	1.4	8.40	2.8	0	Pump Primed				
11/08/2015	13:03:30	7	0.0	8.40	2.9	0	Density Verified				
11/08/2015	13:04:00	621	0.0	8.40	3.0	0	Safety Mtg				
11/08/2015	13:04:20	19	0.0	8.40	3.0	0					
11/08/2015	13:04:30	8	0.0	8.40	3.0	0	Water Test: Good				
11/08/2015	13:05:00	4	0.0	8.40	3.0	0	Start Job				
11/08/2015	13:06:00	3	0.0	8.40	3.0	0	20 bbls Diesel Pumped				
11/08/2015	13:07:40	4	0.0	8.40	3.0	0					
11/08/2015	13:09:20	902	0.0	8.40	3.1	0					
11/08/2015	13:11:00	4975	0.0	8.40	3.1	0	Pressure Test Lines				
11/08/2015	13:12:30	4955	0.0	8.40	3.1	0	Low/High: Good				
11/08/2015	13:12:40	1025	0.0	8.40	3.1	0					
11/08/2015	13:14:20	-3	0.0	8.40	0.0	0					
11/08/2015	13:16:00	2	0.0	8.40	0.0	0					
11/08/2015	13:17:00	3	0.0	8.40	0.0	0	Start Pumping Spacer				
11/08/2015	13:17:40	24	2.0	10.53	0.2	14					
11/08/2015	13:18:17	144	5.1	10.72	1.8	17	MPE: 10.9 ppg				
11/08/2015	13:18:43	606	6.2	10.73	4.0	19	Surfactant Added				
11/08/2015	13:18:44	563	6.3	10.72	4.1	19	Good Returns				
11/08/2015	13:19:20	698	6.4	10.75	8.0	22					

Well Whisper Rock 4C-25HZ			Field Wattenberg		Job Start Nov/08/2015	Customer Anadarko		Job Number DAXH-00496
Date	Time 24-hr clock	Treating Pressure PSI	Flow Rate B/M	Density LB/G	Volume BBL	Solid Fraction NULL	Message	
11/08/2015	13:22:40	640	6.4	10.96	29.4	29		
11/08/2015	13:24:20	613	6.4	10.96	40.2	29		
11/08/2015	13:26:00	622	6.5	10.95	50.9	29		
11/08/2015	13:27:40	427	5.6	10.98	61.6	29		
11/08/2015	13:29:20	70	3.5	10.97	67.9	24		
11/08/2015	13:31:00	25	2.0	10.74	72.5	28		
11/08/2015	13:32:00	77	4.1	10.85	74.9	12		End Spacer
11/08/2015	13:32:30	75	4.0	10.84	76.9	12		Reset Total, Vol = 80 bbl
11/08/2015	13:32:40	74	4.0	10.84	77.6	12		
11/08/2015	13:34:00	6	0.0	10.81	0.2	0		Drop Bottom Plug
11/08/2015	13:34:20	6	0.0	10.83	0.2	0		
11/08/2015	13:36:00	298	6.4	12.07	6.1	14		Start Mixing Lead Slurry
11/08/2015	13:37:40	515	6.4	12.13	16.9	25		
11/08/2015	13:39:20	454	6.4	12.06	27.6	22		
11/08/2015	13:41:00	428	6.5	12.08	38.3	27		
11/08/2015	13:41:23	400	6.4	12.14	40.8	28		Lead: 12 ppg
11/08/2015	13:42:34	386	6.4	12.00	48.4	33		840 sks, Y = 1.78
11/08/2015	13:42:35	375	6.4	11.99	48.5	33		Mix Water = 10.03 gal/sk
11/08/2015	13:42:36	372	6.4	11.99	48.6	33		Wet Dry Samples Taken
11/08/2015	13:42:40	344	6.4	11.95	49.0	33		
11/08/2015	13:44:20	306	6.5	12.10	59.8	31		
11/08/2015	13:46:00	334	6.5	12.06	70.5	30		
11/08/2015	13:46:33	320	6.4	12.07	74.1	30		Good Returns
11/08/2015	13:47:40	333	6.5	12.17	81.3	29		
11/08/2015	13:49:20	340	6.5	12.25	92.0	27		
11/08/2015	13:51:00	314	6.4	12.17	102.8	28		
11/08/2015	13:52:40	335	6.4	12.20	113.5	28		
11/08/2015	13:54:20	337	6.5	12.11	124.2	28		
11/08/2015	13:56:00	309	6.4	12.15	135.0	29		
11/08/2015	13:57:40	341	6.4	12.13	145.7	26		
11/08/2015	13:59:20	302	6.4	12.11	156.4	26		
11/08/2015	14:01:00	322	6.4	12.17	167.2	26		
11/08/2015	14:02:40	318	6.4	12.17	177.9	26		
11/08/2015	14:04:20	316	6.4	12.20	188.6	26		
11/08/2015	14:06:00	318	6.5	12.14	199.4	28		
11/08/2015	14:07:40	328	6.4	12.19	210.1	27		
11/08/2015	14:09:20	298	6.4	12.08	220.9	30		
11/08/2015	14:11:00	309	6.4	12.16	231.6	29		
11/08/2015	14:12:40	331	6.4	12.22	242.3	28		
11/08/2015	14:14:20	326	6.4	12.23	253.1	30		
11/08/2015	14:16:00	303	6.5	11.93	263.8	30		
11/08/2015	14:17:40	304	6.4	12.15	274.6	29		
11/08/2015	14:19:20	304	6.4	12.05	285.3	28		
11/08/2015	14:21:00	86	3.0	12.06	291.9	36		
11/08/2015	14:22:30	90	3.2	12.13	296.5	39		End Lead Slurry
11/08/2015	14:22:35	94	3.2	12.28	296.8	39		Reset Total, Vol = 269 bbl
11/08/2015	14:22:40	94	3.3	12.52	297.0	40		
11/08/2015	14:24:20	94	2.3	13.58	301.7	44		
11/08/2015	14:24:43	94	2.4	13.41	302.6	43		Start Mixing Tail Slurry
11/08/2015	14:26:00	306	5.0	13.64	4.8	40		
11/08/2015	14:27:40	293	5.0	13.66	13.1	37		
11/08/2015	14:29:20	483	6.4	13.70	23.2	37		
11/08/2015	14:31:00	449	6.4	13.66	33.8	36		
11/08/2015	14:32:40	442	6.4	13.63	44.5	36		

Well Whisper Rock 4C-25HZ			Field Wattenberg		Job Start Nov/08/2015	Customer Anadarko		Job Number DAXH-00496
Date	Time 24-hr clock	Treating Pressure PSI	Flow Rate B/M	Density LB/G	Volume BBL	Solid Fraction NULL	Message	
11/08/2015	14:36:00	434	6.4	13.65	65.8	36		
11/08/2015	14:37:40	475	6.4	13.67	76.5	36		
11/08/2015	14:39:20	308	5.0	13.64	86.6	36		
11/08/2015	14:41:00	278	5.0	13.59	95.0	36		
11/08/2015	14:42:40	286	5.0	13.61	103.3	36		
11/08/2015	14:43:45	279	5.0	13.55	108.7	35		Tail: 13.5 ppg
11/08/2015	14:43:46	268	5.0	13.56	108.8	35		Mix Water = 8.1 gal/sk
11/08/2015	14:43:47	269	5.0	13.56	108.9	35		Good Returns
11/08/2015	14:44:20	299	5.0	13.62	111.6	35		
11/08/2015	14:46:00	308	5.0	13.72	119.9	37		
11/08/2015	14:47:40	295	5.0	13.55	128.3	38		
11/08/2015	14:49:20	298	5.0	13.62	136.6	37		
11/08/2015	14:51:00	280	5.0	13.63	144.9	37		
11/08/2015	14:52:40	300	5.0	13.60	153.2	36		
11/08/2015	14:54:20	299	5.0	13.64	161.5	36		
11/08/2015	14:56:00	431	6.4	13.64	170.8	36		
11/08/2015	14:57:40	417	6.4	13.65	181.5	37		
11/08/2015	14:59:20	285	5.0	13.60	191.9	37		
11/08/2015	15:01:00	281	5.0	13.64	200.2	37		
11/08/2015	15:02:40	302	5.0	13.55	208.6	36		
11/08/2015	15:04:20	287	5.0	13.64	216.9	37		
11/08/2015	15:06:00	305	5.0	13.58	225.2	37		
11/08/2015	15:07:40	292	5.0	13.65	233.6	36		
11/08/2015	15:09:20	302	5.0	13.68	241.9	36		
11/08/2015	15:11:00	287	5.0	13.64	250.2	36		
11/08/2015	15:12:40	300	5.0	13.65	258.5	36		
11/08/2015	15:14:20	300	5.0	13.77	266.8	37		
11/08/2015	15:16:00	314	5.0	13.87	275.1	38		
11/08/2015	15:17:40	279	5.0	13.48	283.4	39		
11/08/2015	15:19:20	524	6.2	13.55	292.2	38		
11/08/2015	15:21:00	431	6.4	13.63	302.9	37		
11/08/2015	15:22:40	439	6.4	13.65	313.5	37		
11/08/2015	15:24:20	183	3.5	13.59	322.5	37		
11/08/2015	15:26:00	98	2.5	13.50	326.8	40		
11/08/2015	15:27:40	75	2.4	13.46	333.2	77		
11/08/2015	15:28:02	77	2.0	13.49	334.0	81		End Tail Slurry
11/08/2015	15:28:05	69	2.0	13.49	334.1	82		Reset Total, Vol = 326 bbl
11/08/2015	15:29:20	15	0.0	25.00	0.0	0		
11/08/2015	15:31:00	14	0.0	25.00	0.0	0		
11/08/2015	15:32:40	56	0.3	25.00	0.0	30		
11/08/2015	15:34:20	70	2.7	8.85	4.0	7		
11/08/2015	15:36:00	64	2.6	8.67	7.6	48		
11/08/2015	15:36:11	62	2.6	8.67	8.0	55		Wash Pump Lines
11/08/2015	15:37:40	49	2.1	8.36	11.5	10		
11/08/2015	15:39:20	59	2.5	8.41	15.5	31		
11/08/2015	15:41:00	95	3.5	8.43	20.7	0		
11/08/2015	15:42:40	7	1.0	10.19	0.0	0		
11/08/2015	15:44:20	3	0.0	8.42	0.1	0		
11/08/2015	15:46:00	5	0.0	8.41	0.1	0		
11/08/2015	15:47:00	5	0.0	8.41	0.1	0		Drop Top Plug
11/08/2015	15:47:40	5	0.0	8.41	0.1	0		
11/08/2015	15:49:00	62	3.4	8.44	1.4	0		Start Displacement
11/08/2015	15:49:20	89	3.7	8.43	2.6	0		
11/08/2015	15:51:00	178	6.5	8.40	12.2	0		

Well Whisper Rock 4C-25HZ			Field Wattenberg		Job Start Nov/08/2015	Customer Anadarko		Job Number DAXH-00496
Date	Time 24-hr clock	Treating Pressure PSI	Flow Rate B/M	Density LB/G	Volume BBL	Solid Fraction NULL	Message	
11/08/2015	15:54:20	172	6.4	8.40	33.5	0		
11/08/2015	15:56:00	718	6.4	8.40	43.5	0		
11/08/2015	15:57:40	693	6.4	8.40	54.3	0		
11/08/2015	15:57:54	717	6.4	8.40	55.8	0	Good Returns	
11/08/2015	15:59:20	842	6.4	8.40	65.0	0		
11/08/2015	16:01:00	981	6.4	8.40	75.7	0		
11/08/2015	16:02:40	1056	6.4	8.40	86.3	0		
11/08/2015	16:04:20	1205	6.4	8.40	97.0	0		
11/08/2015	16:06:00	1335	6.4	8.40	107.7	0		
11/08/2015	16:07:40	1435	6.4	8.40	118.4	0		
11/08/2015	16:09:20	1548	6.4	8.40	129.0	0		
11/08/2015	16:11:00	1726	6.4	8.40	139.6	0		
11/08/2015	16:12:40	1856	6.3	8.40	150.3	0		
11/08/2015	16:14:20	1968	6.3	8.40	160.9	0		
11/08/2015	16:16:00	2134	6.4	8.40	171.5	0		
11/08/2015	16:17:40	2195	6.4	8.40	182.1	0		
11/08/2015	16:19:20	2251	6.3	8.40	192.7	0		
11/08/2015	16:20:28	2256	6.3	8.40	199.9	0	Good Returns	
11/08/2015	16:21:00	2268	6.3	8.40	203.2	0		
11/08/2015	16:22:40	2287	6.3	8.40	213.8	0		
11/08/2015	16:24:20	2322	6.3	8.40	224.4	0		
11/08/2015	16:26:00	2364	6.3	8.40	235.0	0		
11/08/2015	16:27:40	2285	6.4	8.40	245.6	0		
11/08/2015	16:29:20	2407	6.3	8.40	256.1	0		
11/08/2015	16:31:00	2387	6.4	8.40	266.7	0		
11/08/2015	16:32:00	2376	6.3	8.40	273.0	0	Cmt to Surface @ 295 bbl	
11/08/2015	16:32:40	2366	6.4	8.40	277.2	0		
11/08/2015	16:34:20	2399	6.3	8.40	287.8	0		
11/08/2015	16:36:00	2446	6.4	8.40	298.4	0		
11/08/2015	16:37:40	1881	2.1	8.40	308.5	0		
11/08/2015	16:39:20	1887	2.0	8.40	311.8	0		
11/08/2015	16:41:00	1939	2.0	8.40	315.2	0		
11/08/2015	16:42:40	1953	2.0	8.40	318.5	0		
11/08/2015	16:44:15	1992	2.0	8.40	321.7	0	Bump Top Plug	
11/08/2015	16:44:20	2004	2.0	8.40	321.9	0	End Displacement	
11/08/2015	16:44:25	2056	2.0	8.40	322.0	0	Reset Total, Vol = 313 bbl	
11/08/2015	16:44:40	2521	0.8	8.40	322.5	0	18 bbls Cmt back to surface	
11/08/2015	16:46:00	2697	1.6	8.40	322.6	0		
11/08/2015	16:47:40	3066	0.0	8.40	323.0	0		
11/08/2015	16:49:20	3072	0.0	8.40	323.0	0		
11/08/2015	16:51:00	3106	0.0	8.40	323.0	0		
11/08/2015	16:52:40	3143	0.0	8.40	323.0	0		
11/08/2015	16:54:20	3174	0.0	8.40	323.0	0		
11/08/2015	16:56:00	3202	0.0	8.40	323.0	0		
11/08/2015	16:57:40	3230	0.0	8.40	323.0	0		
11/08/2015	16:59:20	3257	0.0	8.40	323.0	0		
11/08/2015	17:01:00	3285	0.0	8.40	323.0	0		
11/08/2015	17:02:40	3313	0.0	8.40	323.0	0		
11/08/2015	17:04:20	3336	0.0	8.40	323.0	0		
11/08/2015	17:06:00	3332	0.0	8.40	323.0	0		
11/08/2015	17:06:31	782	0.0	8.40	323.0	0	Csg Test: Good	
11/08/2015	17:06:37	276	0.0	8.40	323.0	0	Floats Held, 4 bbls back	
11/08/2015	17:07:40	-1	0.0	8.40	323.0	0		

<b>Well</b> Whisper Rock 4C-25HZ	<b>Field</b> Wattenberg	<b>Job Start</b> Nov/08/2015	<b>Customer</b> Anadarko	<b>Job Number</b> DAXH-00496
-------------------------------------	----------------------------	---------------------------------	-----------------------------	---------------------------------

### Post Job Summary

Average Pump Rates, bbl/min					Volume of Fluid Injected, bbl			
<b>Slurry</b> 5.4	<b>N2</b>	<b>Mud</b>	<b>Maximum Rate</b> 6.5	<b>Total Slurry</b> 595.0	<b>Mud</b> 0.0	<b>Spacer</b> 80.0	<b>N2</b>	
Treating Pressure Summary, psi					Breakdown Fluid			
<b>Maximum</b> 5053	<b>Final</b> 1	<b>Average</b> 913	<b>Bump Plug to</b> 2500	<b>Breakdown</b>	<b>Type</b>	<b>Volume</b> bbl	<b>Density</b> lb/gal	
<b>Avg. N2 Percent</b> %	<b>Designed Slurry Volume</b> 589.0 bbl	<b>Displacement</b> 313.0 bbl	<b>Mix Water Temp</b> 66 degF	<b>Cement Circulated to Surface?</b> <input checked="" type="checkbox"/>	<b>Volume</b> 18.0 bbl			
				<b>Washed Thru Perfs</b> <input type="checkbox"/>	<b>To</b> ft			
<b>Customer or Authorized Representative</b> Josh Johnson			<b>Schlumberger Supervisor</b> Matlock/Evans		<b>Circulation Lost</b> <input type="checkbox"/>	<b>Job Completed</b> <input checked="" type="checkbox"/>		
				-	-			