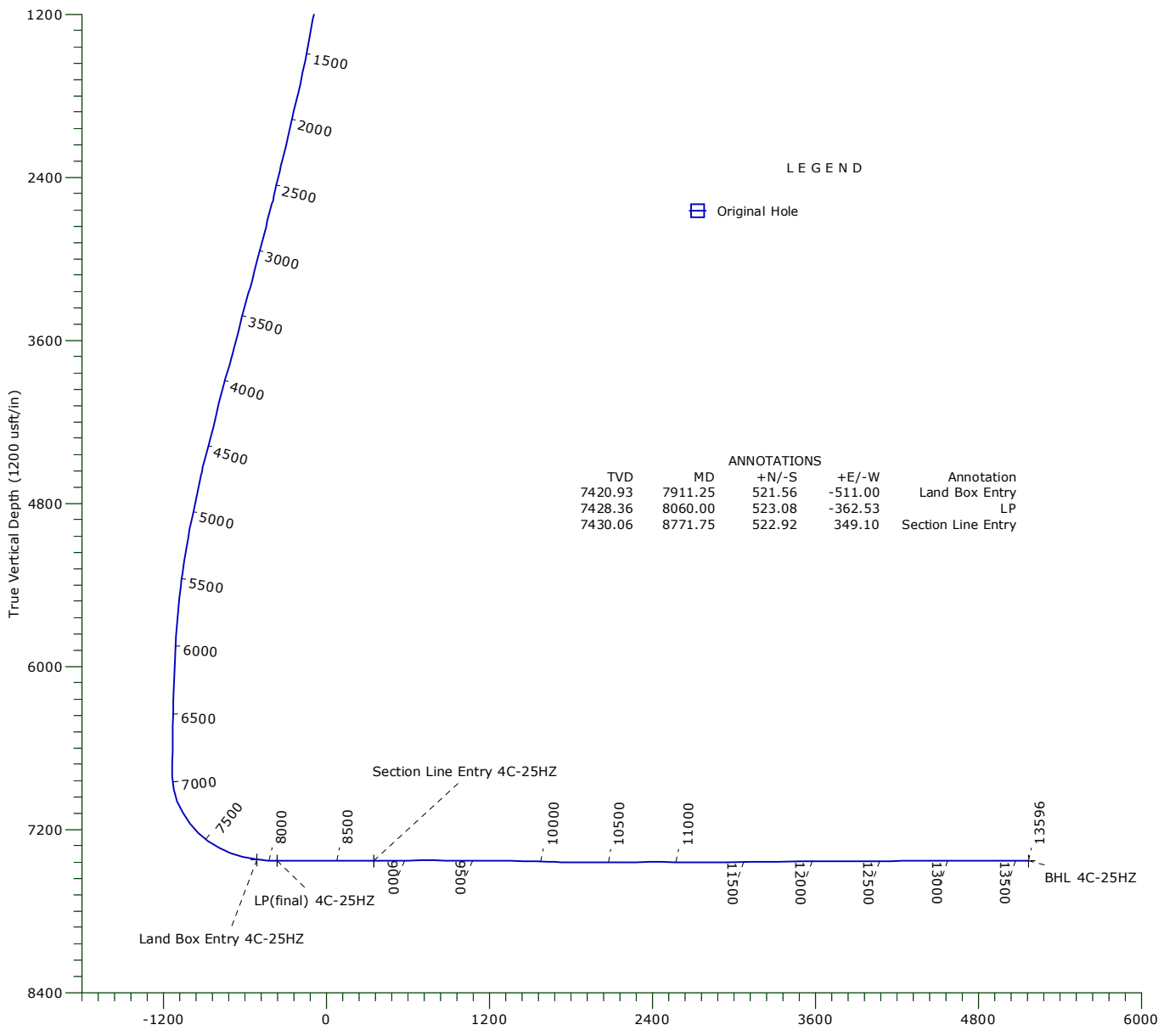
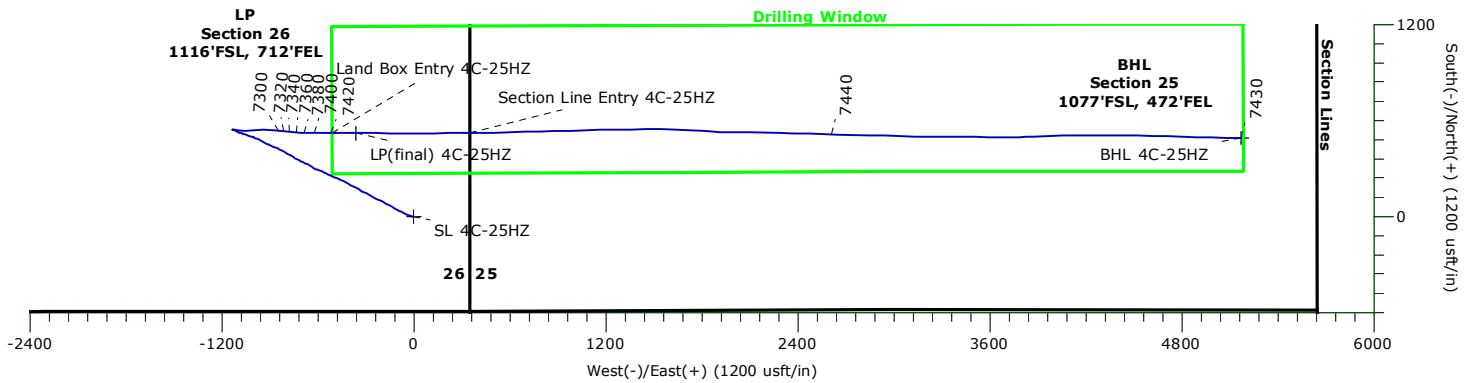




US ROCKIES WATTENBERG PLANNING

Project: WELD-NAD83-UTMFT13N
 Site: Wilson Ranch 16-26HZ Pad
 Well: Whisper Rock 4C-25HZ
 Wellbore: Original Hole
 Design: Original Hole



LEGEND

Original Hole

TVD	MD	+N/-S	+E/-W	Annotation
7420.93	7911.25	521.56	-511.00	Land Box Entry
7428.36	8060.00	523.08	-362.53	LP
7430.06	8771.75	522.92	349.10	Section Line Entry

Vertical Section at 90.00° (1200 usft/in)
 WELLBORE TARGET DETAILS

Name	TVD	+N/-S	+E/-W	Northing	Easting	Latitude	Longitude	Shape
SL 4C-25HZ	0.00	0.00	0.00	14628335.92	1651023.53	40.279007°N	104.961970°W	Point
Land Box Entry 4C-25HZ	7420.93	521.56	-511.00	14628857.25	1650512.31	40.280439°N	104.963802°W	Point
LP(final) 4C-25HZ	7428.36	523.08	-362.53	14628858.84	1650660.78	40.280443°N	104.963270°W	Point
BHL 4C-25HZ	7429.83	490.91	5171.62	14628829.05	1656194.94	40.280354°N	104.943427°W	Point
Section Line Entry 4C-25HZ	7430.06	522.92	349.10	14628858.99	1651372.41	40.280443°N	104.960718°W	Point

Design: Original Hole (Whisper Rock 4C-25HZ/Original Hole)
 Created By: Michael Cabrera Date: 11/21, November 09 2015

Precision Drilling Corporation

Survey Report

Company: US ROCKIES WATTENBERG PLANNING	Local Co-ordinate Reference: Well Whisper Rock 4C-25HZ
Project: WELD-NAD83-UTMFT13N	TVD Reference: 5072'GL+20'KB @ 5092.00usft (PD460)
Site: Wilson Ranch 16-26HZ Pad	MD Reference: 5072'GL+20'KB @ 5092.00usft (PD460)
Well: Whisper Rock 4C-25HZ	North Reference: True
Wellbore: Original Hole	Survey Calculation Method: Minimum Curvature
Design: Original Hole	Database: Single User

Project WELD-NAD83-UTMFT13N	
Map System: Universal Transverse Mercator (US Survey Fee	System Datum: Mean Sea Level
Geo Datum: North American Datum 1983	
Map Zone: Zone 13N (108 W to 102 W)	

Site Wilson Ranch 16-26HZ Pad		
Site Position:	Northing: 14,628,290.77 usft	Latitude: 40.278883°N
From: Lat/Long	Easting: 1,651,023.27 usft	Longitude: 104.961971°W
Position Uncertainty: 0.00 usft	Slot Radius: 13-3/16 "	Grid Convergence: 0.02 °

Well Whisper Rock 4C-25HZ		
Well Position +N/-S 0.00 usft	Northing: 14,628,335.91 usft	Latitude: 40.279007°N
+E/-W 0.00 usft	Easting: 1,651,023.53 usft	Longitude: 104.961970°W
Position Uncertainty 3.28 usft	Wellhead Elevation: 0.00 usft	Ground Level: 5,072.00 usft

Wellbore Original Hole

Magnetics	Model Name	Sample Date	Declination (°)	Dip Angle (°)	Field Strength (nT)
	IGRF2010	10/04/15	8.38	66.77	52,592

Design Original Hole

Audit Notes:		
Version: 1.0	Phase: ACTUAL	Tie On Depth: 0.00

Vertical Section:	Depth From (TVD) (usft)	+N/-S (usft)	+E/-W (usft)	Direction (°)
	0.00	0.00	0.00	90.00

Survey Program		Date	11/09/15		
From (usft)	To (usft)	Survey (Wellbore)	Tool Name	Description	
10.00	1,800.00	Survey #1 (Original Hole)	APC_ISCWSA REV 2 MW	Fixed:v2:standard declination	
1,930.00	13,530.00	Survey #2 (Original Hole)	APC_ISCWSA REV 2 MW	Fixed:v2:Rockies, crustal dec + 3-axis correction	
13,596.00	13,596.00	Survey #3 (Original Hole)	APC_BLIND	OWSG BLIND	

Measured Depth (usft)	Inclination (°)	Azimuth (°)	Vertical Depth (usft)	+N/-S (usft)	+E/-W (usft)	Vertical Section (usft)	Dogleg Rate (°/100usft)	Build Rate (°/100usft)	Turn Rate (°/100usft)	
0.00	0.00	0.00	0.00	0.00	0.00	0.00	0.00	0.00	0.00	
SL 4C-25HZ										
10.00	0.00	0.00	10.00	0.00	0.00	0.00	0.00	0.00	0.00	
96.00	0.59	182.63	96.00	-0.44	-0.02	-0.02	0.69	0.69	0.00	
187.00	0.77	237.68	186.99	-1.24	-0.56	-0.56	0.71	0.20	60.49	
276.00	1.34	268.25	275.98	-1.59	-2.10	-2.10	0.88	0.64	34.35	
382.00	2.13	282.95	381.93	-1.19	-5.26	-5.26	0.85	0.75	13.87	
472.00	2.82	289.42	471.84	-0.07	-8.98	-8.98	0.83	0.77	7.19	
562.00	4.00	293.22	561.68	1.90	-13.95	-13.95	1.33	1.31	4.22	

Precision Drilling Corporation

Survey Report

Company:	US ROCKIES WATTENBERG PLANNING	Local Co-ordinate Reference:	Well Whisper Rock 4C-25HZ
Project:	WELD-NAD83-UTMFT13N	TVD Reference:	5072'GL+20'KB @ 5092.00usft (PD460)
Site:	Wilson Ranch 16-26HZ Pad	MD Reference:	5072'GL+20'KB @ 5092.00usft (PD460)
Well:	Whisper Rock 4C-25HZ	North Reference:	True
Wellbore:	Original Hole	Survey Calculation Method:	Minimum Curvature
Design:	Original Hole	Database:	Single User

Survey										
Measured Depth (usft)	Inclination (°)	Azimuth (°)	Vertical Depth (usft)	+N/-S (usft)	+E/-W (usft)	Vertical Section (usft)	Dogleg Rate (°/100usft)	Build Rate (°/100usft)	Turn Rate (°/100usft)	
652.00	5.10	292.06	651.40	4.64	-20.55	-20.55	1.23	1.22	-1.29	
742.00	6.69	286.67	740.92	7.65	-29.28	-29.28	1.87	1.77	-5.99	
832.00	7.86	293.97	830.20	11.65	-39.92	-39.92	1.65	1.30	8.11	
922.00	8.45	291.42	919.29	16.57	-51.70	-51.70	0.77	0.66	-2.83	
1,012.00	9.03	297.40	1,008.24	22.23	-64.13	-64.13	1.20	0.64	6.64	
1,102.00	9.72	296.45	1,097.04	28.87	-77.20	-77.20	0.79	0.77	-1.06	
1,192.00	10.32	295.54	1,185.67	35.72	-91.28	-91.28	0.69	0.67	-1.01	
1,282.00	11.40	296.86	1,274.05	43.22	-106.49	-106.49	1.23	1.20	1.47	
1,373.00	11.61	300.03	1,363.23	51.87	-122.44	-122.44	0.73	0.23	3.48	
1,463.00	12.03	303.28	1,451.32	61.54	-138.12	-138.12	0.87	0.47	3.61	
1,553.00	12.56	299.95	1,539.26	71.58	-154.44	-154.44	0.98	0.59	-3.70	
1,643.00	13.35	295.46	1,626.97	80.93	-172.30	-172.30	1.42	0.88	-4.99	
1,733.00	14.09	295.15	1,714.40	90.05	-191.60	-191.60	0.83	0.82	-0.34	
1,800.00	15.08	296.36	1,779.24	97.39	-206.79	-206.79	1.55	1.48	1.81	
1,930.00	14.74	296.89	1,904.86	112.38	-236.69	-236.69	0.28	-0.26	0.41	
2,024.00	14.65	297.27	1,995.79	123.23	-257.92	-257.92	0.14	-0.10	0.40	
2,117.00	14.24	298.50	2,085.85	134.08	-278.43	-278.43	0.55	-0.44	1.32	
2,211.00	15.11	297.73	2,176.78	145.30	-299.43	-299.43	0.95	0.93	-0.82	
2,305.00	15.02	299.89	2,267.55	157.07	-320.84	-320.84	0.60	-0.10	2.30	
2,398.00	16.07	298.76	2,357.15	169.26	-342.57	-342.57	1.18	1.13	-1.22	
2,492.00	15.08	298.09	2,447.69	181.28	-364.77	-364.77	1.07	-1.05	-0.71	
2,585.00	14.58	298.34	2,537.60	192.54	-385.74	-385.74	0.54	-0.54	0.27	
2,680.00	16.94	299.90	2,629.02	205.11	-408.27	-408.27	2.52	2.48	1.64	
2,774.00	16.58	297.01	2,719.03	218.03	-432.09	-432.09	0.97	-0.38	-3.07	
2,866.00	15.33	292.39	2,807.48	228.62	-455.03	-455.03	1.94	-1.36	-5.02	
2,959.00	15.95	294.31	2,897.04	238.57	-478.04	-478.04	0.87	0.67	2.06	
3,052.00	16.54	292.04	2,986.33	248.80	-501.96	-501.96	0.93	0.63	-2.44	
3,144.00	16.32	293.52	3,074.57	258.87	-525.95	-525.95	0.51	-0.24	1.61	
3,237.00	15.96	297.21	3,163.91	269.93	-549.30	-549.30	1.17	-0.39	3.97	
3,329.00	16.98	293.52	3,252.14	281.08	-572.87	-572.87	1.59	1.11	-4.01	
3,422.00	15.58	289.73	3,341.41	290.71	-597.08	-597.08	1.89	-1.51	-4.08	
3,514.00	15.96	298.06	3,429.96	300.83	-619.87	-619.87	2.49	0.41	9.05	
3,607.00	15.97	300.70	3,519.37	313.38	-642.16	-642.16	0.78	0.01	2.84	
3,701.00	17.07	296.52	3,609.49	326.14	-665.62	-665.62	1.72	1.17	-4.45	
3,795.00	15.58	294.95	3,699.70	337.63	-689.41	-689.41	1.65	-1.59	-1.67	
3,887.00	18.02	297.85	3,787.77	349.49	-713.20	-713.20	2.80	2.65	3.15	
3,982.00	18.09	298.00	3,878.09	363.28	-739.21	-739.21	0.09	0.07	0.16	
4,076.00	17.56	299.21	3,967.58	377.05	-764.48	-764.48	0.69	-0.56	1.29	
4,170.00	15.63	299.94	4,057.66	390.29	-787.83	-787.83	2.07	-2.05	0.78	
4,264.00	14.85	298.10	4,148.35	402.29	-809.43	-809.43	0.98	-0.83	-1.96	
4,357.00	15.45	299.39	4,238.12	413.98	-830.74	-830.74	0.74	0.65	1.39	
4,449.00	15.81	293.67	4,326.72	425.02	-852.89	-852.89	1.72	0.39	-6.22	
4,542.00	17.37	294.26	4,415.85	435.81	-877.15	-877.15	1.69	1.68	0.63	

Precision Drilling Corporation

Survey Report

Company:	US ROCKIES WATTENBERG PLANNING	Local Co-ordinate Reference:	Well Whisper Rock 4C-25HZ
Project:	WELD-NAD83-UTMFT13N	TVD Reference:	5072'GL+20'KB @ 5092.00usft (PD460)
Site:	Wilson Ranch 16-26HZ Pad	MD Reference:	5072'GL+20'KB @ 5092.00usft (PD460)
Well:	Whisper Rock 4C-25HZ	North Reference:	True
Wellbore:	Original Hole	Survey Calculation Method:	Minimum Curvature
Design:	Original Hole	Database:	Single User

Survey

Measured Depth (usft)	Inclination (°)	Azimuth (°)	Vertical Depth (usft)	+N/S (usft)	+E/W (usft)	Vertical Section (usft)	Dogleg Rate (°/100usft)	Build Rate (°/100usft)	Turn Rate (°/100usft)
4,634.00	15.68	294.19	4,504.05	446.55	-901.02	-901.02	1.84	-1.84	-0.08
4,726.00	13.46	296.45	4,593.08	456.42	-921.95	-921.95	2.49	-2.41	2.46
5,003.00	13.13	296.85	4,862.66	484.99	-978.88	-978.88	0.12	-0.12	0.14
5,096.00	12.33	293.22	4,953.37	493.67	-997.43	-997.43	1.22	-0.86	-3.90
5,188.00	10.11	289.32	5,043.61	500.22	-1,014.08	-1,014.08	2.55	-2.41	-4.24
5,280.00	10.30	286.15	5,134.15	505.18	-1,029.60	-1,029.60	0.64	0.21	-3.45
5,373.00	8.66	287.16	5,225.88	509.56	-1,044.28	-1,044.28	1.77	-1.76	1.09
5,465.00	9.21	291.08	5,316.77	514.25	-1,057.76	-1,057.76	0.89	0.60	4.26
5,557.00	7.60	287.85	5,407.78	518.76	-1,070.43	-1,070.43	1.82	-1.75	-3.51
5,650.00	5.59	280.88	5,500.16	521.50	-1,080.73	-1,080.73	2.32	-2.16	-7.49
5,743.00	5.93	294.67	5,592.69	524.36	-1,089.54	-1,089.54	1.53	0.37	14.83
5,837.00	5.35	297.28	5,686.24	528.40	-1,097.85	-1,097.85	0.67	-0.62	2.78
5,930.00	4.39	292.50	5,778.90	531.75	-1,104.99	-1,104.99	1.12	-1.03	-5.14
6,025.00	3.50	295.37	5,873.67	534.38	-1,110.97	-1,110.97	0.96	-0.94	3.02
6,118.00	2.98	297.29	5,966.52	536.70	-1,115.69	-1,115.69	0.57	-0.56	2.06
6,212.00	2.22	293.93	6,060.43	538.56	-1,119.52	-1,119.52	0.82	-0.81	-3.57
6,401.00	1.33	291.15	6,249.33	540.84	-1,124.91	-1,124.91	0.47	-0.47	-1.47
6,494.00	1.33	292.54	6,342.31	541.64	-1,126.92	-1,126.92	0.03	0.00	1.49
6,586.00	0.85	283.44	6,434.29	542.21	-1,128.57	-1,128.57	0.55	-0.52	-9.89
6,680.00	0.98	292.21	6,528.28	542.68	-1,129.99	-1,129.99	0.20	0.14	9.33
6,774.00	0.94	272.97	6,622.27	543.02	-1,131.50	-1,131.50	0.34	-0.04	-20.47
6,868.00	0.96	263.49	6,716.26	542.97	-1,133.06	-1,133.06	0.17	0.02	-10.09
6,962.00	2.00	113.88	6,810.24	542.22	-1,132.34	-1,132.34	3.05	1.11	-159.16
7,055.00	11.32	99.36	6,902.51	540.07	-1,121.82	-1,121.82	10.10	10.02	-15.61
7,149.00	20.77	91.59	6,992.76	538.10	-1,096.00	-1,096.00	10.29	10.05	-8.27
7,243.00	29.87	91.40	7,077.64	537.07	-1,055.85	-1,055.85	9.68	9.68	-0.20
7,337.00	39.27	86.37	7,154.97	538.38	-1,002.63	-1,002.63	10.44	10.00	-5.35
7,431.00	45.04	90.09	7,224.64	540.22	-939.62	-939.62	6.69	6.14	3.96
7,525.00	55.05	93.63	7,284.94	537.72	-867.72	-867.72	11.03	10.65	3.77
7,618.00	61.70	96.05	7,333.68	530.98	-788.87	-788.87	7.49	7.15	2.60
7,710.00	68.64	92.55	7,372.30	524.80	-705.68	-705.68	8.29	7.54	-3.80
7,806.00	75.77	91.30	7,401.62	521.75	-614.38	-614.38	7.53	7.43	-1.30
7,900.00	82.30	89.16	7,419.49	521.40	-522.15	-522.15	7.30	6.95	-2.28
7,911.24	83.04	89.18	7,420.93	521.56	-511.00	-511.00	6.55	6.55	0.14
Land Box Entry 4C-25HZ									
7,994.00	88.46	89.29	7,427.06	522.66	-428.51	-428.51	6.55	6.55	0.14
8,060.00	89.28	89.99	7,428.36	523.08	-362.53	-362.53	1.64	1.25	1.07
LP(final) 4C-25HZ									
8,086.00	89.61	90.27	7,428.61	523.02	-336.53	-336.53	1.64	1.25	1.06
8,179.00	90.69	91.28	7,428.37	521.76	-243.54	-243.54	1.59	1.16	1.09
8,273.00	89.37	89.95	7,428.32	520.75	-149.55	-149.55	1.99	-1.40	-1.41
8,366.00	90.02	90.87	7,428.81	520.08	-56.56	-56.56	1.21	0.70	0.99
8,459.00	90.77	91.20	7,428.17	518.40	36.43	36.43	0.88	0.81	0.35
8,553.00	88.98	88.62	7,428.38	518.55	130.41	130.41	3.34	-1.90	-2.74

Precision Drilling Corporation

Survey Report

Company:	US ROCKIES WATTENBERG PLANNING	Local Co-ordinate Reference:	Well Whisper Rock 4C-25HZ
Project:	WELD-NAD83-UTMFT13N	TVD Reference:	5072'GL+20'KB @ 5092.00usft (PD460)
Site:	Wilson Ranch 16-26HZ Pad	MD Reference:	5072'GL+20'KB @ 5092.00usft (PD460)
Well:	Whisper Rock 4C-25HZ	North Reference:	True
Wellbore:	Original Hole	Survey Calculation Method:	Minimum Curvature
Design:	Original Hole	Database:	Single User

Survey

Measured Depth (usft)	Inclination (°)	Azimuth (°)	Vertical Depth (usft)	+N/-S (usft)	+E/-W (usft)	Vertical Section (usft)	Dogleg Rate (°/100usft)	Build Rate (°/100usft)	Turn Rate (°/100usft)
8,646.00	89.46	88.44	7,429.64	520.94	223.37	223.37	0.55	0.52	-0.19
8,741.00	89.99	89.49	7,430.10	522.65	318.36	318.36	1.24	0.56	1.11
8,771.75	90.15	89.50	7,430.06	522.92	349.10	349.10	0.53	0.53	0.03
Section Line Entry 4C-25HZ									
8,835.00	90.49	89.52	7,429.71	523.47	412.35	412.35	0.53	0.53	0.03
8,930.00	90.63	88.12	7,428.78	525.42	507.32	507.32	1.48	0.15	-1.47
9,025.00	91.35	88.31	7,427.14	528.38	602.26	602.26	0.78	0.76	0.20
9,119.00	90.17	89.02	7,425.89	530.57	696.23	696.23	1.46	-1.26	0.76
9,213.00	89.41	88.32	7,426.23	532.75	790.20	790.20	1.10	-0.81	-0.74
9,307.00	89.09	88.67	7,427.46	535.22	884.16	884.16	0.50	-0.34	0.37
9,402.00	89.70	88.97	7,428.47	537.18	979.13	979.13	0.72	0.64	0.32
9,497.00	90.34	89.15	7,428.43	538.74	1,074.12	1,074.12	0.70	0.67	0.19
9,591.00	90.28	88.86	7,427.92	540.37	1,168.10	1,168.10	0.32	-0.06	-0.31
9,686.00	90.59	88.72	7,427.20	542.37	1,263.08	1,263.08	0.36	0.33	-0.15
9,780.00	88.24	89.21	7,428.16	544.07	1,357.05	1,357.05	2.55	-2.50	0.52
9,873.00	88.30	88.95	7,430.97	545.56	1,450.00	1,450.00	0.29	0.06	-0.28
9,967.00	87.84	91.14	7,434.14	545.49	1,543.94	1,543.94	2.38	-0.49	2.33
10,061.00	88.32	92.70	7,437.29	542.34	1,637.83	1,637.83	1.74	0.51	1.66
10,152.00	89.58	92.77	7,438.95	538.00	1,728.71	1,728.71	1.39	1.38	0.08
10,245.00	89.94	93.62	7,439.34	532.82	1,821.56	1,821.56	0.99	0.39	0.91
10,337.00	90.19	90.94	7,439.24	529.16	1,913.48	1,913.48	2.93	0.27	-2.91
10,430.00	89.60	90.21	7,439.41	528.23	2,006.48	2,006.48	1.01	-0.63	-0.78
10,523.00	89.79	91.42	7,439.90	526.90	2,099.46	2,099.46	1.32	0.20	1.30
10,708.00	90.70	91.50	7,439.11	522.19	2,284.40	2,284.40	0.49	0.49	0.04
10,801.00	90.15	91.30	7,438.42	519.92	2,377.37	2,377.37	0.63	-0.59	-0.22
10,893.00	89.71	91.18	7,438.54	517.93	2,469.35	2,469.35	0.50	-0.48	-0.13
10,989.00	89.16	91.66	7,439.48	515.55	2,565.31	2,565.31	0.76	-0.57	0.50
11,083.00	89.87	91.28	7,440.28	513.14	2,659.28	2,659.28	0.86	0.76	-0.40
11,272.00	90.31	91.96	7,439.98	507.79	2,848.20	2,848.20	0.43	0.23	0.36
11,366.00	90.66	91.13	7,439.19	505.26	2,942.16	2,942.16	0.96	0.37	-0.88
11,554.00	90.40	91.36	7,437.45	501.17	3,130.11	3,130.11	0.18	-0.14	0.12
11,648.00	90.37	91.53	7,436.82	498.80	3,224.08	3,224.08	0.18	-0.03	0.18
11,742.00	90.34	89.98	7,436.23	497.56	3,318.06	3,318.06	1.65	-0.03	-1.65
11,927.00	90.39	90.31	7,435.05	497.10	3,503.06	3,503.06	0.18	0.03	0.18
12,020.00	90.38	90.33	7,434.43	496.58	3,596.06	3,596.06	0.02	-0.01	0.02
12,112.00	90.47	90.20	7,433.75	496.15	3,688.05	3,688.05	0.17	0.10	-0.14
12,205.00	90.13	89.20	7,433.26	496.64	3,781.05	3,781.05	1.14	-0.37	-1.08
12,298.00	89.72	87.63	7,433.38	499.21	3,874.01	3,874.01	1.74	-0.44	-1.69
12,392.00	90.70	87.73	7,433.04	503.02	3,967.93	3,967.93	1.05	1.04	0.11
12,485.00	90.42	88.28	7,432.13	506.25	4,060.87	4,060.87	0.66	-0.30	0.59
12,578.00	90.90	89.93	7,431.06	507.71	4,153.85	4,153.85	1.85	0.52	1.77
12,670.00	90.45	89.90	7,429.97	507.84	4,245.84	4,245.84	0.49	-0.49	-0.03
12,763.00	90.37	90.19	7,429.31	507.77	4,338.84	4,338.84	0.32	-0.09	0.31

Precision Drilling Corporation

Survey Report

Company:	US ROCKIES WATTENBERG PLANNING	Local Co-ordinate Reference:	Well Whisper Rock 4C-25HZ
Project:	WELD-NAD83-UTMFT13N	TVD Reference:	5072'GL+20'KB @ 5092.00usft (PD460)
Site:	Wilson Ranch 16-26HZ Pad	MD Reference:	5072'GL+20'KB @ 5092.00usft (PD460)
Well:	Whisper Rock 4C-25HZ	North Reference:	True
Wellbore:	Original Hole	Survey Calculation Method:	Minimum Curvature
Design:	Original Hole	Database:	Single User

Survey										
Measured Depth (usft)	Inclination (°)	Azimuth (°)	Vertical Depth (usft)	+N/-S (usft)	+E/-W (usft)	Vertical Section (usft)	Dogleg Rate (°/100usft)	Build Rate (°/100usft)	Turn Rate (°/100usft)	
12,855.00	89.79	90.28	7,429.18	507.39	4,430.84	4,430.84	0.64	-0.63	0.10	
12,948.00	89.23	90.62	7,429.97	506.66	4,523.83	4,523.83	0.70	-0.60	0.37	
13,041.00	90.66	91.62	7,430.06	504.84	4,616.81	4,616.81	1.88	1.54	1.08	
13,133.00	90.27	91.79	7,429.32	502.11	4,708.77	4,708.77	0.46	-0.42	0.18	
13,226.00	89.39	91.62	7,429.59	499.34	4,801.72	4,801.72	0.96	-0.95	-0.18	
13,318.00	89.98	91.56	7,430.10	496.79	4,893.69	4,893.69	0.64	0.64	-0.07	
13,412.00	90.18	90.92	7,429.97	494.75	4,987.66	4,987.66	0.71	0.21	-0.68	
13,505.00	90.14	91.13	7,429.71	493.09	5,080.65	5,080.65	0.23	-0.04	0.23	
13,530.00	89.89	91.41	7,429.70	492.53	5,105.64	5,105.64	1.50	-1.00	1.12	
13,596.00	89.89	91.41	7,429.83	490.91	5,171.62	5,171.62	0.00	0.00	0.00	
BHL 4C-25HZ										

Design Targets										
Target Name	Dip Angle (°)	Dip Dir. (°)	TVD (usft)	+N/-S (usft)	+E/-W (usft)	Northing (usft)	Easting (usft)	Latitude	Longitude	
SL 4C-25HZ - hit/miss target - Shape - Point	0.00	0.00	0.00	0.00	0.00	14,628,335.91	1,651,023.53	40.279007°N	104.961970°W	
Land Box Entry 4C-25 - actual wellpath hits target center - Point	0.00	0.00	7,420.93	521.56	-511.00	14,628,857.25	1,650,512.31	40.280439°N	104.963802°W	
LP(final) 4C-25HZ - actual wellpath hits target center - Point	0.00	0.00	7,428.36	523.08	-362.53	14,628,858.83	1,650,660.78	40.280443°N	104.963270°W	
BHL 4C-25HZ - actual wellpath hits target center - Point	0.00	0.00	7,429.83	490.91	5,171.62	14,628,829.04	1,656,194.94	40.280354°N	104.943427°W	
Section Line Entry 4C - actual wellpath hits target center - Point	0.00	0.00	7,430.06	522.92	349.11	14,628,858.99	1,651,372.41	40.280443°N	104.960719°W	

Design Annotations					
Measured Depth (usft)	Vertical Depth (usft)	Local Coordinates		Comment	
		+N/-S (usft)	+E/-W (usft)		
7,911.25	7,420.93	521.56	-511.00	Land Box Entry	
8,060.00	7,428.36	523.08	-362.53	LP	
8,771.75	7,430.06	522.92	349.10	Section Line Entry	