

T12N, R65W

NW. COR.
SEC. 25, T12N, R65W
FOUND 2 1/2" ALUM. CAP
L.S. NO. 9911

NE. COR.
SEC. 25, T12N, R65W
FOUND 2 1/2" ALUM. CAP
L.S. NO. 9911

N. 1/4 COR.
SEC. 25, T12N, R65W
FOUND 2 1/2" ALUM. CAP
L.S. NO. 9911

SURFACE LOCATION: NAD 83
GROUND ELEVATION= 5849.6'
LATITUDE= 40.972484°
LONGITUDE= -104.603203°
LATITUDE= 40°58'20.943"
LONGITUDE= -104°36'11.531"
HEEL LOCATION: NAD 83
LATITUDE= 40.972847°
LONGITUDE= -104.603573°
LATITUDE= 40°58'22.249"
LONGITUDE= -104°36'12.864"
BOTTOM HOLE LOCATION: NAD 83
LATITUDE= 40.984005°
LONGITUDE= -104.603475°
LATITUDE= 40°59'02.417"
LONGITUDE= -104°36'12.510"

BOTTOM OF HOLE:
600' FNL & 940' FEL

N 00°01'52" E 5254.31' (M)

S 89°02'11" W 2630.91' (M)

S 89°00'54" W 2628.87' (M)

N 00°12'41" W 2640.79' (M)

25

S 89°10'33" W
2635.52' (C)

S 89°10'33" W
2635.22' (C)

E. 1/4 COR.
SEC. 25, T12N, R65W
FOUND STONE

SURFACE LOCATION: NAD 27
LATITUDE= 40.972502°
LONGITUDE= -104.602684°
LATITUDE= 40°58'21.007"
LONGITUDE= -104°36'09.664"
HEEL LOCATION: NAD 27
LATITUDE= 40.972865°
LONGITUDE= -104.603055°
LATITUDE= 40°58'22.313"
LONGITUDE= -104°36'10.998"
BOTTOM HOLE LOCATION: NAD 27
LATITUDE= 40.984022°
LONGITUDE= -104.602956°
LATITUDE= 40°59'02.481"
LONGITUDE= -104°36'10.643"

RESOLUTION
12-65-25-25-6CH
SURFACE LOCATION

N 00°11'45" W 4066' GRID
N 00°23'02" E TRUE
N 07°57'45" W MAGNETIC

HEEL LOCATION

SW. COR.
SEC. 25, T12N, R65W
FOUND 2 1/2" ALUM. CAP
L.S. NO. 37070

S 89°10'54" W 5280.42' (M)

SE. COR.
SEC. 25, T12N, R65W
FOUND 2 1/2" ALUM. CAP
L.S. NO. 37070

NOTES:

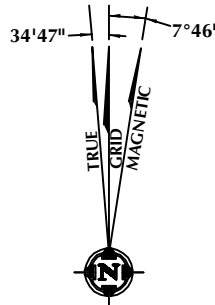
- ▲ INDICATES SECTION CORNER
- INDICATES CALCULATED CORNER
- ELEVATION BASED ON NAVD88 (GEOID09)
- BASIS OF BEARING DERIVED FROM COLORADO COORDINATE SYSTEM OF 1983 NORTH ZONE.
- ALL MEASURED DISTANCES ARE GRID. COMBINED SCALE FACTOR: .99975766
- OPERATOR: ROB WILSON / PDOP = 1.3
- SEE ADDENDUM TO WELL LOCATION CERTIFICATE FOR EXISTING IMPROVEMENTS WITHIN 500' OF THE WELL PAD.
- WELL FOOTAGES ARE MEASURED AT RIGHT ANGLES TO THE SECTION LINES.
- THE BOTTOM OF HOLE BEARS N00°11'45"W, 4066' FROM THE HEEL LOCATION.

CERTIFICATE OF SURVEYOR:

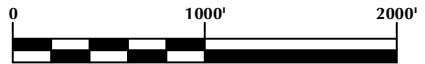
THIS IS TO CERTIFY THAT THE ABOVE PLAT WAS PREPARED FROM FIELD NOTES OF ACTUAL SURVEY MADE BY ME OR UNDER MY SUPERVISION AND THAT THE SAME ARE TRUE AND CORRECT TO THE BEST OF MY KNOWLEDGE AND BELIEF. THIS CERTIFICATE DOES NOT REPRESENT A LAND SURVEY PLAT OR IMPROVEMENT SURVEY PLAT AS DEFINED BY C.R.S. 38-513-02 AND CANNOT BE RELIED UPON TO DETERMINE OWNERSHIP.

Jacob I. Dunham
JACOB I. DUNHAM
PROFESSIONAL LAND SURVEYOR
COLORADO REGISTRATION NUMBER 18459
12/3/15

NOTICE:
ACCORDING TO COLORADO STATE LAW YOU MUST COMMENCE ANY LEGAL ACTION BASED UPON ANY DEFECT IN THIS SURVEY WITHIN THREE YEARS AFTER YOU FIRST DISCOVER SUCH DEFECT. IN NO EVENT MAY ANY ACTION BASED UPON ANY DEFECT IN THIS SURVEY BE COMMENCED MORE THAN TEN YEARS FROM THE DATE ON THE CERTIFICATION SHOWN HEREON.



NOTE:
MAGNETIC NORTH IS CURRENT AS OF 12/1/2015.
MAGNETIC NORTH CHANGES WEST 0°06' PER YEAR.



SCALE: 1" = 1000'

WELL PAD - RESOLUTION 12-65-25-25-6NH

RESOLUTION 12-65-25-25-6CH
WELL LOCATION CERTIFICATE
467' FSL & 837' FEL SESE (SURFACE)
600' FSL & 940' FEL SESE (HEEL)
600' FNL & 940' FEL NENE (BOTTOM)
LOCATED IN SECTION 25
T12N, R65W, 6TH P.M.
WELD COUNTY, COLORADO

Anadarko E&P
Onshore LLC
1099 18th Street
Denver, Colorado 80202



CONSULTING, LLC

SHERIDAN OFFICE
1095 Saberton Avenue
Sheridan, Wyoming 82801
Phone 307-674-0609

LOVELAND OFFICE
1635 Foxtrail Drive, Suite 204
Loveland, Colorado 80538
Phone 970-776-4331

DRAFTED BY: SJM	CHECKED BY: JID	SHEET NO: 1
DATE DRAFTED: 12/3/15	DATE SURVEYED: 11/23/15	
REVISED:	FILE NAME: 14-52	1 OF 1