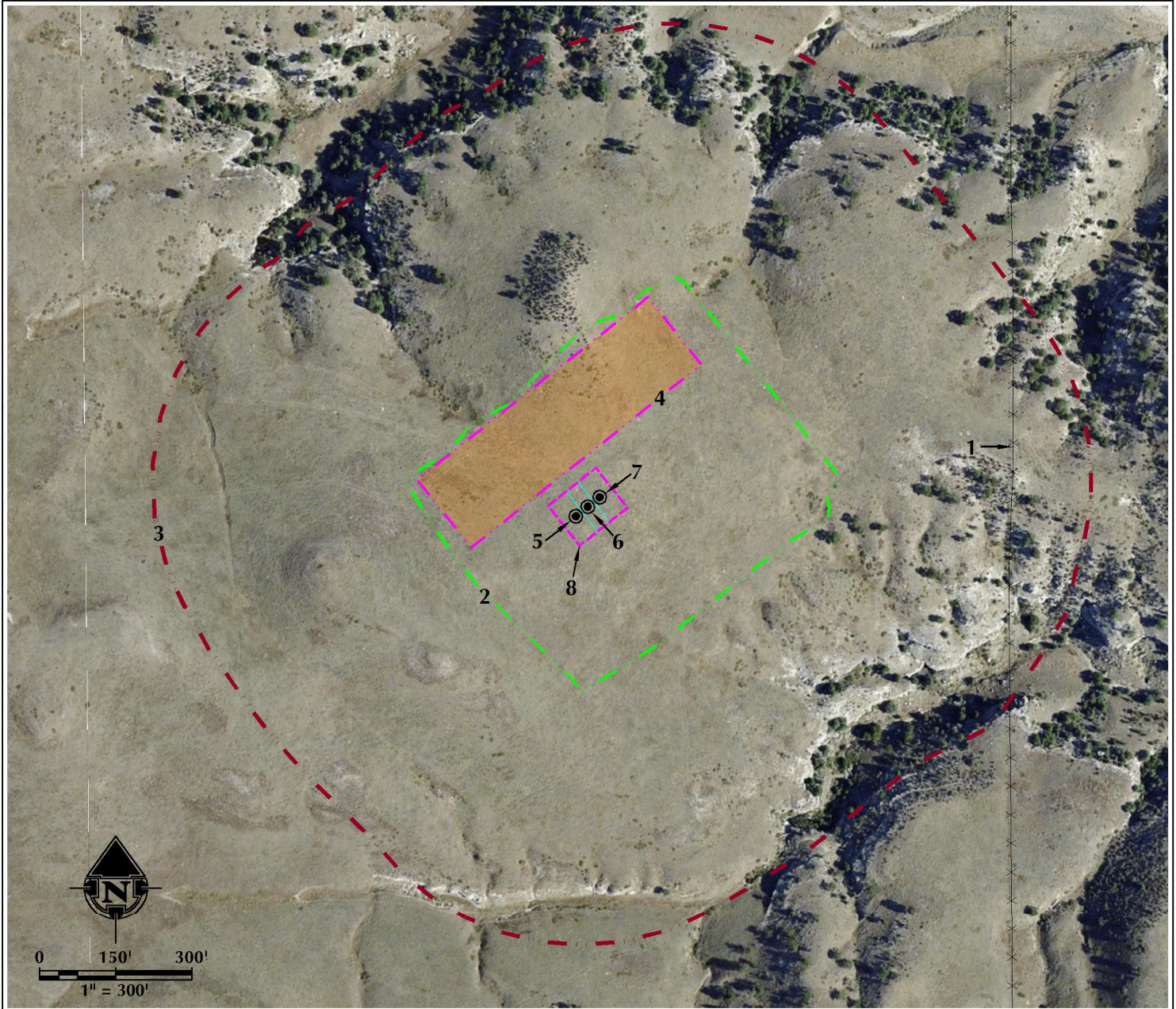


# LOCATION DRAWING RESOLUTION 12-65-25-25-6NH

## HORIZONTAL MULTI-WELL PAD

SE1/4 SE1/4 SECTION 25, TOWNSHIP 12 NORTH, RANGE 65 WEST, 6TH P.M.



- |  |  |
|--|--|
| 1. EXISTING FENCE IS $\pm 857'$ E.                                   | 5. PROPOSED WELL: RESOLUTION 12-65-25-25-6NH |
| 2. OPERATIONAL DISTURBANCE AREA                                      | 6. PROPOSED WELL: RESOLUTION 12-65-25-25-6CH |
| 3. WELL PAD 500' BUFFER  | 7. PROPOSED WELL: RESOLUTION 12-65-25-25-7NH |
| 4. PROPOSED RESOLUTION 12-65-25-25-6NH FACILITY PAD IS $\pm 80'$ NW. | 8. PUMP JACK OPERATIONS AREA                 |

### LEGEND

- |                    |                               |                                 |
|--------------------|-------------------------------|---------------------------------|
| ● EXISTING WELL    | --- 500' BUFFER               | --- OHP --- OVERHEAD POWER LINE |
| ● PROPOSED WELL    | --- DISTURBANCE AREA          | EXISTING FACILITY               |
| ● WATER WELL       | --- PUMP JACK AREA            | EXISTING BUILDINGS              |
| --- EXISTING FENCE | --- PROPOSED FACILITY         | RESIDENCE/BUILDING UNIT         |
| --- PUBLIC ROAD    | --- EPL --- EXISTING PIPELINE |                                 |
| --- PRIVATE ROAD   | --- DITCH/CANAL/DRAINAGE      |                                 |

### \* REFERENCE LOCATION \*

ALL MEASUREMENTS ARE MADE FROM  
REFERENCE WELL: RESOLUTION 12-65-25-25-6NH  
LAT: 40.972434° LONG: -104.603289° (NAD83)  
EXISTING GROUND ELEVATION = 5850.2'  
WELL FOOTAGES: 449' FSL & 860' FEL

SURFACE USE: RANGELAND

NEAREST BUILDING UNIT: 5280+

PREPARED FOR:

Anadarko E&P Onshore LLC



609 CONSULTING, LLC

LOVELAND OFFICE  
1615 Foxtrail Drive, Suite 204  
Loveland, Colorado 80538  
Phone 970-776-4331

SHERIDAN OFFICE  
1095 Saberton Avenue  
Sheridan, Wyoming 82801  
Phone 307-674-0609

DATE SURVEYED: 11/23/15

DATE: 12/3/15

DRAFTER: SJM

REVISED:

11/23/15

12/3/15

SJM

### DATA SOURCES:

- AERIAL COURTESY OF ESRI, INC.  
- WATER WELLS COURTESY OF  
COLORADO DIVISION OF WATER  
RESOURCES