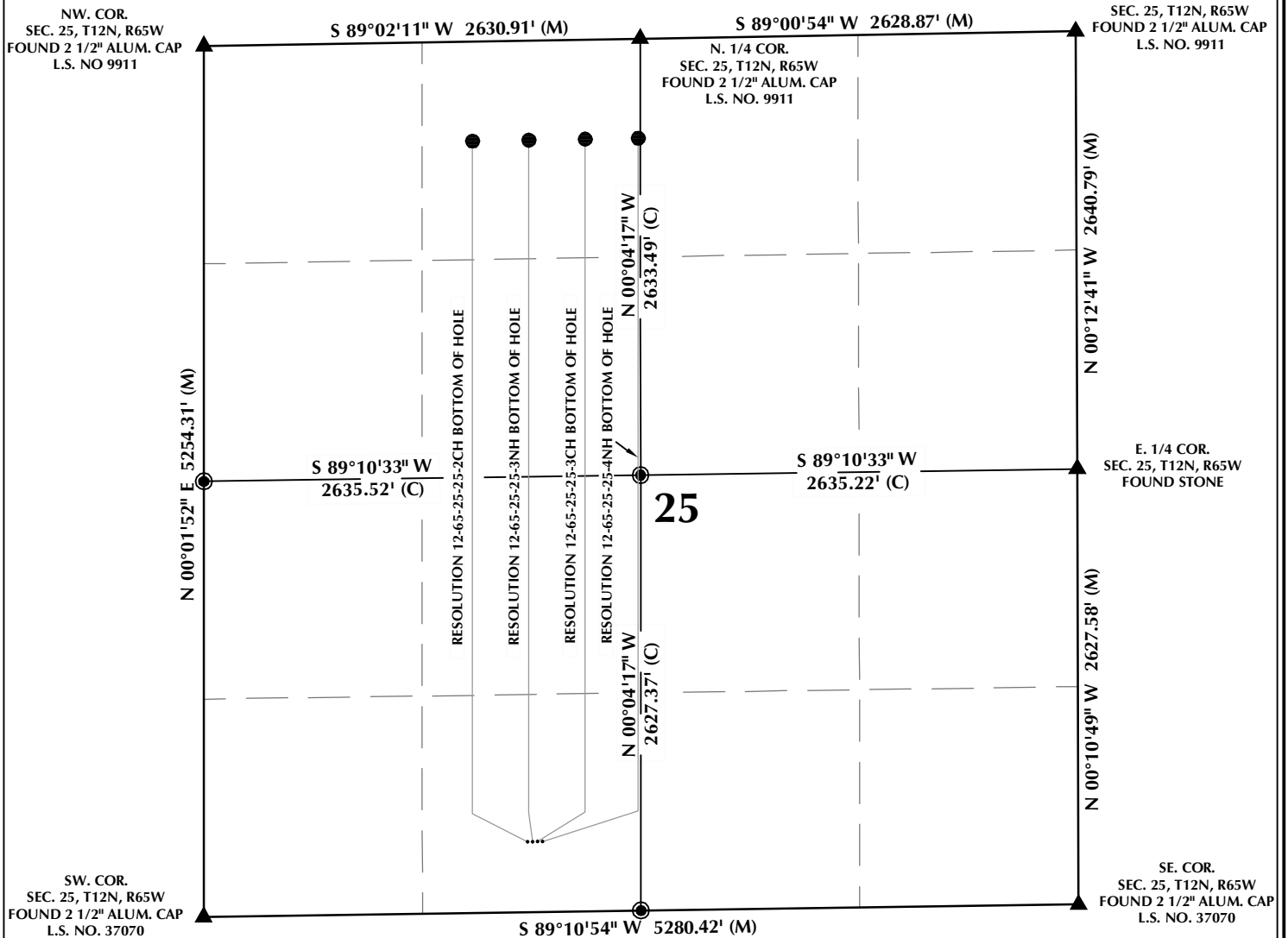


RESOLUTION 12-65-25-25-4NH T12N, R65W

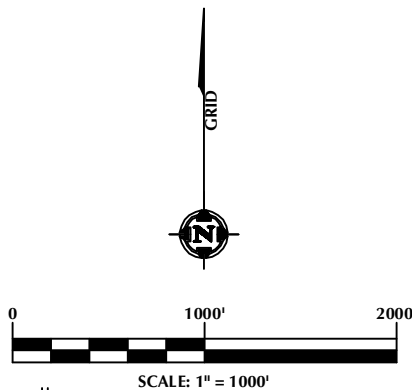


WELL NOTES:

RESOLUTION 12-65-25-25-2CH
SURFACE: 425' FSL, 1954' FWL
BOTTOM HOLE: 600' FNL, 1620' FWL
RESOLUTION 12-65-25-25-3NH
SURFACE: 425' FSL, 1984' FWL
BOTTOM HOLE: 600' FNL, 1960' FWL
RESOLUTION 12-65-25-25-3CH
SURFACE: 425' FSL, 2014' FWL
BOTTOM HOLE: 600' FNL, 2300' FWL
RESOLUTION 12-65-25-25-4NH
SURFACE: 425' FSL, 2044' FWL
BOTTOM HOLE: 600' FNL, 2620' FWL

NOTES:

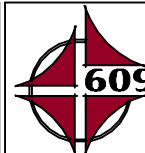
- ▲ INDICATES SECTION CORNER
- INDICATES CALCULATED CORNER
- BASIS OF BEARING DERIVED FROM COLORADO COORDINATE SYSTEM OF 1983 NORTH ZONE.
- ALL MEASURED DISTANCES ARE GRID.
- COMBINED SCALE FACTOR: .99975766
- WELL FOOTAGES ARE MEASURED AT RIGHT ANGLES TO THE SECTION LINES.



WELL PAD - RESOLUTION 12-65-25-25-4NH

MULTI-WELL PLAN
RESOLUTION 12-65-25-25-2CH,
RESOLUTION 12-65-25-25-3NH,
RESOLUTION 12-65-25-25-3CH &
RESOLUTION 12-65-25-25-4NH
LOCATED IN SECTION 25
T12N, R65W, 6TH P.M.
WELD COUNTY, COLORADO

Anadarko E&P
Onshore LLC
1099 18th Street
Denver, Colorado 80202



CONSULTING, LLC

SHERIDAN OFFICE
1095 Saberton Avenue
Sheridan, Wyoming 82801
Phone 307-674-0609

LOVELAND OFFICE
1635 Foxtrail Drive, Suite 204
Loveland, Colorado 80538
Phone 970-776-4331

DRAFTED BY: SJM	CHECKED BY: JID	SHEET NO: 1
DATE DRAFTED: 12/3/15	DATE SURVEYED: 11/23/15	1 OF 2
REVISED:	FILE NAME: 14-52	

\\ANADARKO\2014\2014 52 RESOLUTION PROSPECT WELLS CO\PLATS\RESOLUTION 12-65-25-24\RESOLUTION 12-65-24-25 MULT-WELL PLAN 2.dwg, 12/3/2015 3:24:09 PM, samuel

1. RESOLUTION 12-65-25-25-2CH
SURFACE: 425' FSL, 1954' FWL
LATITUDE: 40.972340°
LONGITUDE: -104.612211°
2. RESOLUTION 12-65-25-25-3NH
SURFACE: 425' FSL, 1984' FWL
LATITUDE: 40.972340°
LONGITUDE: -104.612103°
3. RESOLUTION 12-65-25-25-3CH
SURFACE: 425' FSL, 2014' FWL
LATITUDE: 40.972340°
LONGITUDE: -104.611994°
4. RESOLUTION 12-65-25-25-4NH
SURFACE: 425' FSL, 2044' FWL
LATITUDE: 40.972341°
LONGITUDE: -104.611885°

1. RESOLUTION 12-65-25-25-2CH
HEEL TO BOTTOM OF HOLE:
N00°01'52"E, 4058'
2. RESOLUTION 12-65-25-25-3NH
HEEL TO BOTTOM OF HOLE:
N00°01'52"E, 4059'
3. RESOLUTION 12-65-25-25-3CH
HEEL TO BOTTOM OF HOLE:
N00°01'52"E, 4060'
4. RESOLUTION 12-65-25-25-4NH
HEEL TO BOTTOM OF HOLE:
N00°01'52"E, 4061'

MULTI-WELL PLAN
RESOLUTION 12-65-25-25-2CH,
RESOLUTION 12-65-25-25-3NH,
RESOLUTION 12-65-25-25-3CH &
RESOLUTION 12-65-25-25-4NH
LOCATED IN SECTION 25
T12N, R65W, 6TH P.M.
WELD COUNTY, COLORADO

**Anadarko E&P
Onshore LLC
1099 18th Street
Denver, Colorado 80202**



CONSULTING, LLC

SHERIDAN OFFICE
1095 Saberton Avenue
Sheridan, Wyoming 82801
Phone 307-674-0609

LOVELAND OFFICE
1635 Foxtrail Drive, Suite 204
Loveland, Colorado 80538
Phone 970-776-4331

DRAFTED BY: SJM	CHECKED BY: JID	SHEET NO: 2 2 OF 2
DATE DRAFTED: 12/3/15	DATE SURVEYED: 11/23/15	
REVISED:	FILE NAME: 14-52	