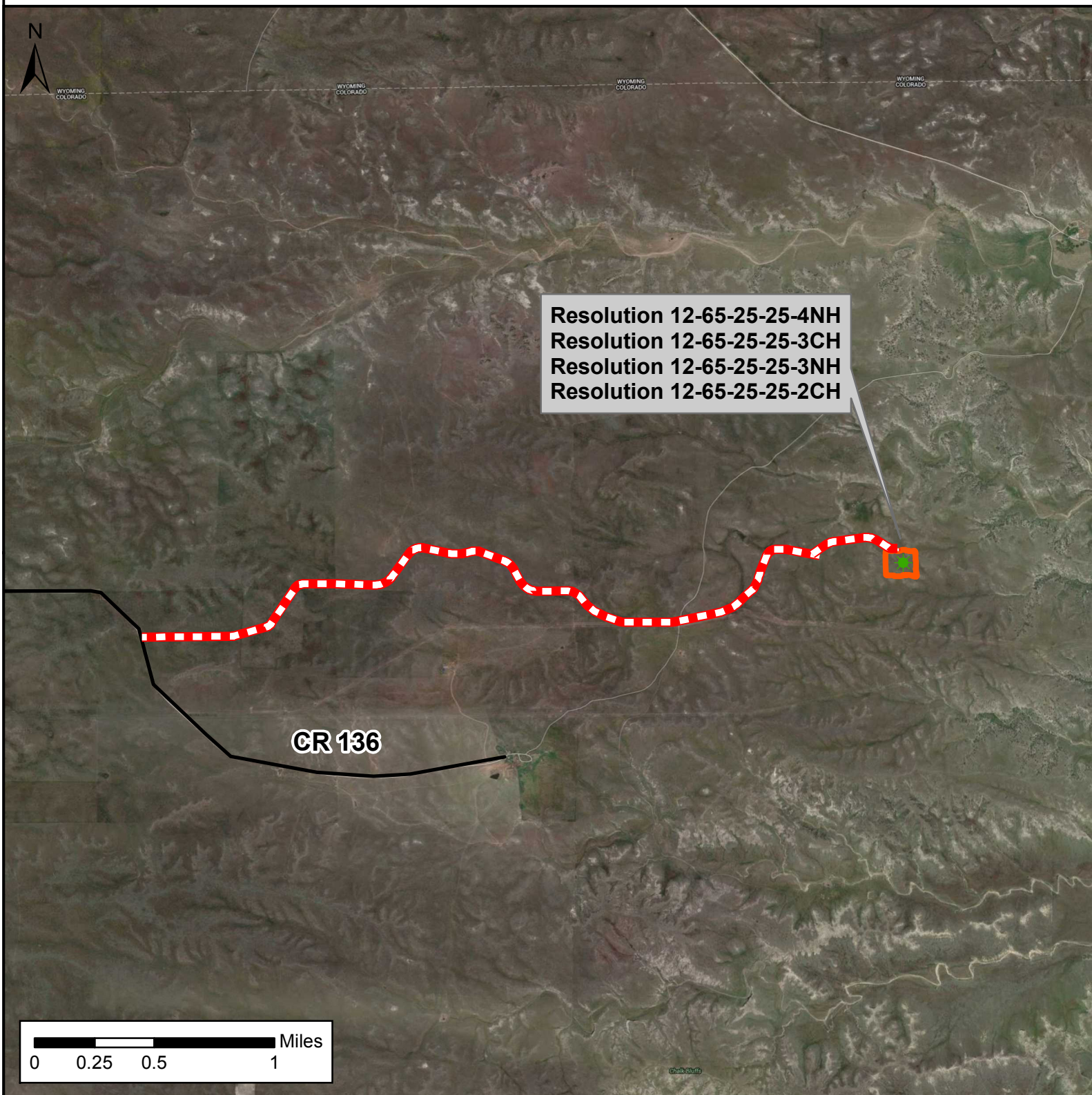


ACCESS ROAD MAP

RESOLUTION 12-65-25-25-4NH



Access Road Map

Resolution 12-65-25-25-4NH
Resolution 12-65-25-25-3CH
Resolution 12-65-25-25-3NH
Resolution 12-65-25-25-2CH
Location in Section 25
T12N, R65W 6th P.M.
Weld County, Colorado

Legend

- Well- Proposed
- Access Road- Proposed
- Pad- Proposed
- County Road - Existing



Date created: 1/13/2016
Created by: APC Regulatory GIS
Scale: 1:35,000
Projection: NAD83 UTM 13N