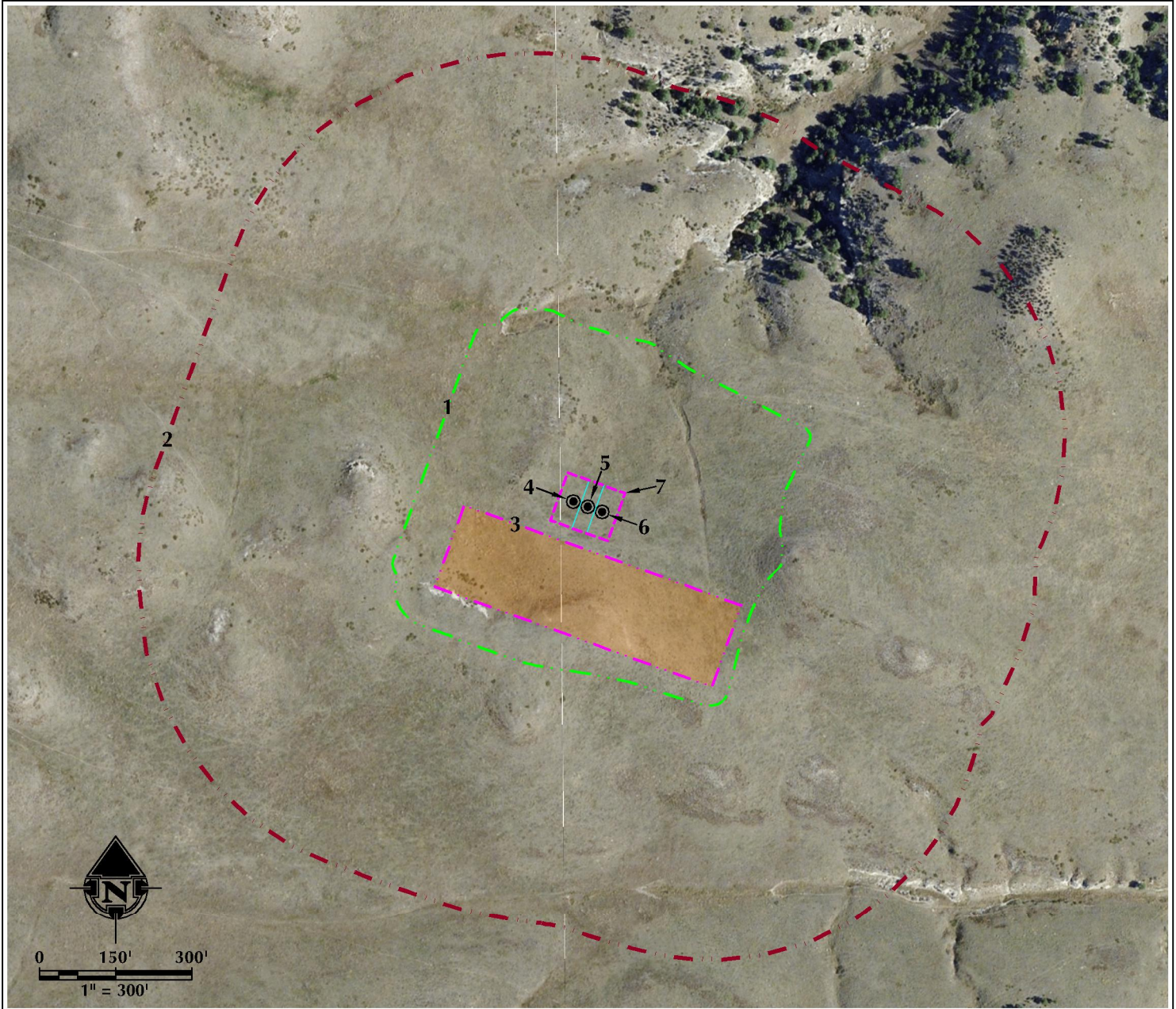


LOCATION DRAWING RESOLUTION 12-65-25-25-4CH

HORIZONTAL MULTI-WELL PAD

SW1/4 SE1/4 SECTION 25, TOWNSHIP 12 NORTH, RANGE 65 WEST, 6TH P.M.



- | | |
|--|--|
| 1. OPERATIONAL DISTURBANCE AREA | 5. PROPOSED WELL: RESOLUTION 12-65-25-25-5NH |
| 2. WELL PAD 500' BUFFER | 6. PROPOSED WELL: RESOLUTION 12-65-25-25-5CH |
| 3. PROPOSED RESOLUTION 12-65-25-25-4CH FACILITY PAD IS ±80' S. | 7. PUMP JACK OPERATIONS AREA |
| 4. PROPOSED WELL: RESOLUTION 12-65-25-25-4CH | |

LEGEND

- | | | | |
|--------------------|----------------------|--------------------------|-----------------------------|
| ● EXISTING WELL | --- 500' BUFFER | --- DHP | --- OVERHEAD POWER LINE |
| ● PROPOSED WELL | --- DISTURBANCE AREA | --- EXISTING FACILITY | --- EXISTING BUILDINGS |
| ● WATER WELL | --- PUMP JACK AREA | --- EXISTING PIPELINE | --- RESIDENCE/BUILDING UNIT |
| --- EXISTING FENCE | --- EPL | --- DITCH/CANAL/DRAINAGE | |
| --- PUBLIC ROAD | | | |
| --- PRIVATE ROAD | | | |

* REFERENCE LOCATION *

ALL MEASUREMENTS ARE MADE FROM
REFERENCE WELL: RESOLUTION 12-65-25-25-4CH
LAT: 40.972509° LONG: -104.606691° (NAD83)
EXISTING GROUND ELEVATION = 5850.9'
WELL FOOTAGES: 480' FSL & 1800' FEL

SURFACE USE: RANGELAND

NEAREST BUILDING UNIT: 5280+

PREPARED FOR:

Anadarko E&P Onshore LLC



609 CONSULTING, LLC
LOVELAND OFFICE
1615 Foxtrail Drive, Suite 204
Loveland, Colorado 80538
Phone 970-776-4331

SHERIDAN OFFICE
1095 Saberton Avenue
Sheridan, Wyoming 82801
Phone 307-674-0609

DATE SURVEYED: 11/23/15
DATE: 12/3/15
DRAFTER: SJM
REVISED:

DATA SOURCES:
- AERIAL COURTESY OF ESRI, INC.
- WATER WELLS COURTESY OF
COLORADO DIVISION OF WATER
RESOURCES