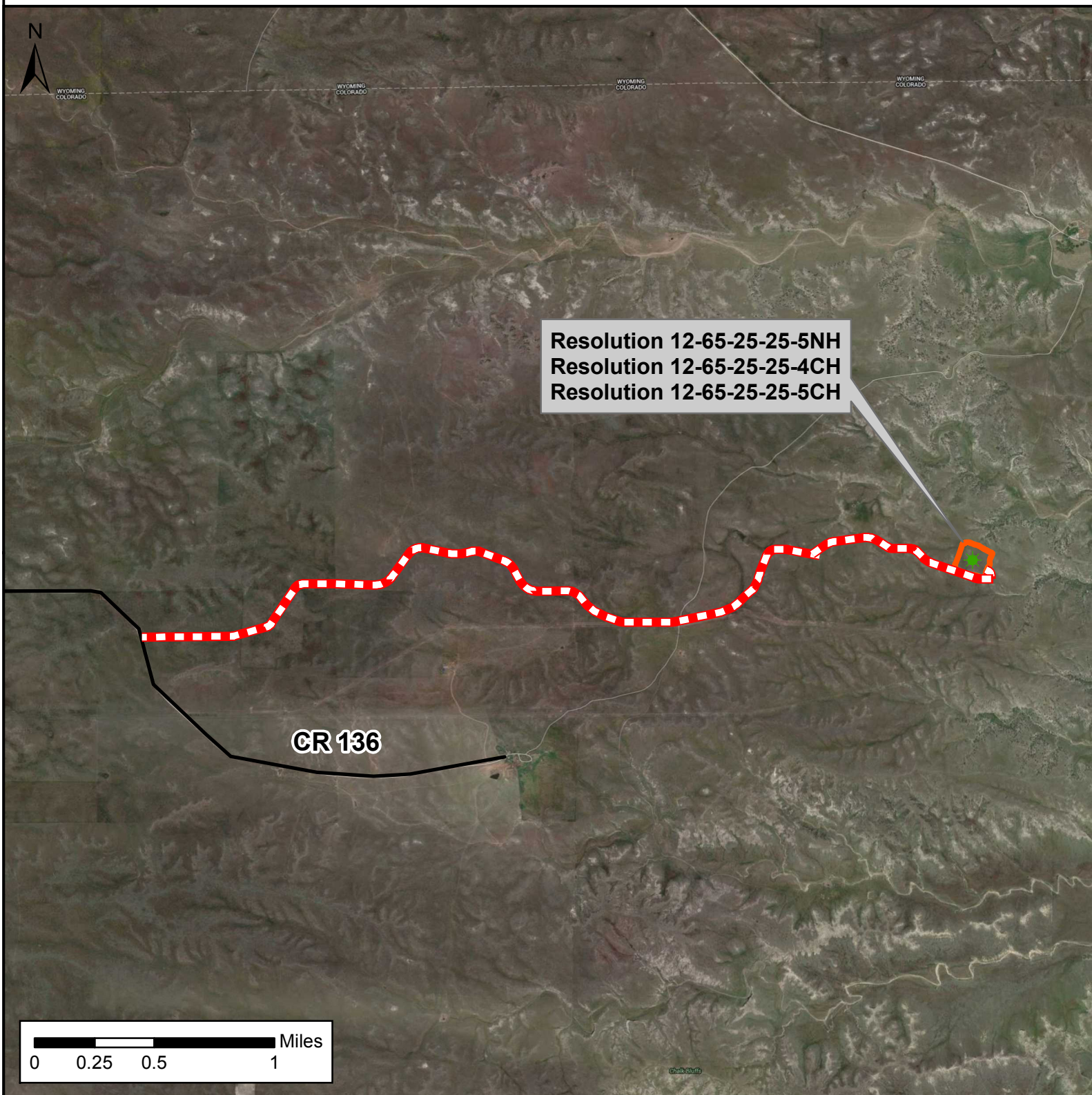


# ACCESS ROAD MAP





## RESOLUTION 12-65-25-25-4CH



### Access Road Map

Resolution 12-65-25-25-5NH  
Resolution 12-65-25-25-4CH  
Resolution 12-65-25-25-5CH  
Location in Section 25  
T12N, R65W 6th P.M.  
Weld County, Colorado

### Legend

-  Well- Proposed
-  Access Road- Proposed
-  Pad- Proposed
-  County Road - Existing



Date created: 1/13/2016  
Created by: APC Regulatory GIS  
Scale: 1:35,000  
Projection: NAD83 UTM 13N