



Scale: 5" / 100'  
Measured Depth Log

**Well Name** Janssen #11

**Location** Sec.8-T06N-R65W

**State** Colorado

**County** Weld

**Country** USA

**Rig Number** Patterson UTI 346

**API Number** 05-123-42363-00

**AFE #** NA

**Geographic Region** DJ Basin

**Field** Wattenberg

**Spud Date** 11/29/2015

**Drilling Completed** TBD

**Surface Coordinates** SHL: 2399' FNL, 2396' FWL Sec. 8 T6N R65W

Lat: 40 30' 9.461 N  
Long: 104 41' 17.794 W

**Bottom Hole Coordinates** PBHL:

Lat: 40 30' 11.866 N  
Long: 104 42' 17.068 W

**Ground Elevation** 4,774'

**K.B. Elevation** 4,798.5

**Logged Interval** 5,000' **To** 6,560'

**Total Depth** 11,290'

**Formation** Codell

**Type of Drilling Fluid** Oil Based - invert

## Operator

**Company** Extaction Oil & Gas

**Address** 1888 Sherman St., Suite 200  
Denver, CO 80203

## Geologist

**Name** Vivian Spiess / Jared Rouse

## Zone Color Coding

Oil Condensate Gas

Name

Vivian Spencer / Jared Reese

Company

Extraction Oil & Gas

Address

1888 Sherman St., Suite 200  
Denver, CO 80203

Note

Error

Core

Water

Pressure

Seal

Other

Equipment

ML-113

Comments

Start: 11-29-15  
TD: 12-01-15

Services Provided

2-man Logging  
On Site Geosteering

Logger Names

Dominic Pitre / Nicholas Watkiins

Address

Empirica, LLC.  
6360 W Sam Houston Pkwy N  
Suite 100  
Houston, TX 77041

Rock Types

UNKNOWN

ANHYDRITE

GYPSUM

SALT

SIDERITE or LIMONITE

LIMESTONE

DOLOMITE

CHERT

COAL

MARLSTONE

CLAYSTONE

SHALE

SHALE GRAY

SHALE COLORED

SILTSTONE

SANDSTONE

CONGLOMERATE

BRECCIA

TILL

BENTONITE

TUFF

IGNEOUS

METAMORPHIC

CEMENT

Accessories

Fossils

ALGAE

AMPHIPORA

BELEMNITE

BIOCLASTIC

BRACHIOPOD

BRYOZOA

CEPHALOPOD

CORAL

CRINOID

ECHINOID

FISH

FORAMINIFERA

FOSSIL

GASTROPOD

OOLITE

OSTRACOD

PELECYPOD

PELLET

PISOLITE

PLANT REMAINS

PLANT SPORES

SCAPHOPOD

STROMATOPOROID

ANHYDRITIC

ARGILLACEOUS

ARGILLITE GRAIN

BENTONITE

BITUMENOUS SUBSTANCE

BRECCIA FRAGMENTS

CALCAREOUS

CARBONACEOUS FLAKES

CHTDK

CHTLT

COAL - THIN BEDS

DOLOMITIC

FELDSPAR

FERRUGINOUS PELLET

FERRUGINOUS

GLAUCONITE

GYPSIFEROUS

HEAVY MINERAL

KAOLIN

MARLSTONE

MINERAL CRYSTALS

NODULES

PHOSPHATE PELLETS

PYRITE

SALT CAST

SANDY

SILICEOUS

SILTY

TUFFACEOUS

Stringer

ANHYDRITE STRINGER

BENTONITE STRINGER

COAL STRINGER

DOLOMITE STRINGER

GYPSUM STRINGER

LIMESTONE STRINGER

MARLSTONE (CALC) STRG

MARLSTONE (DOL) STRG

SANDSTONE STRINGER

SHALE STRINGER

SILTSTONE STRINGER

Other Symbols

Oil Show

DEAD

EVEN

QUESTIONABLE

SPOTTED STAINING

ORGANIC

PINPOINT

VUGGY

Engineering

BIT

CASING

FORMATION TOP

GAS SHOW

MN DEPTH

NORMAL FAULT

OIL SHOW

OVERTURNED STRATA

REVERSE FAULT

Rounding

ANGULAR

ROUNDED

SUBANG

SUBRND

LITHOGRAPHIC

MICROXLN

MUDSTONE

PACKSTONE

WACKESTONE

Sorting

Porosity

- E EARTHY
- ▣ FENESTRAL
- F FRACTURE
- ✕ INTERCRYSTALLINE
- ⊕ INTEROOLITIC
- ✎ MOLDIC

Core

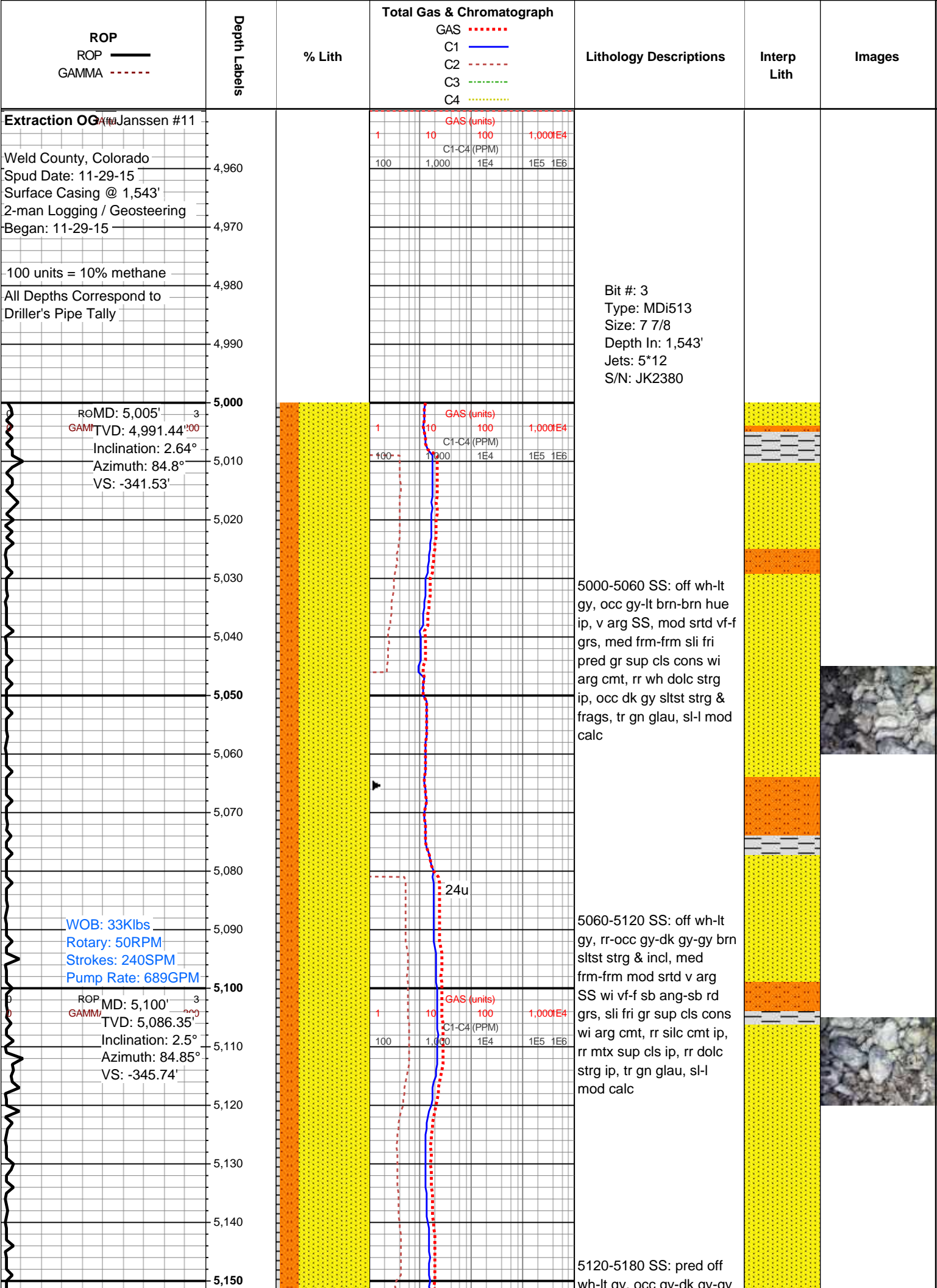
- ◀ CONNECTION (LEFT)
- ▶ CONNECTION (RIGHT)
- ◀🔥 CONNECTION GAS
- ⬇ CORE - LOST
- CORE - RECOVERED
- ⋮ DST INTERVAL
- ⬇/⬆ FAULT

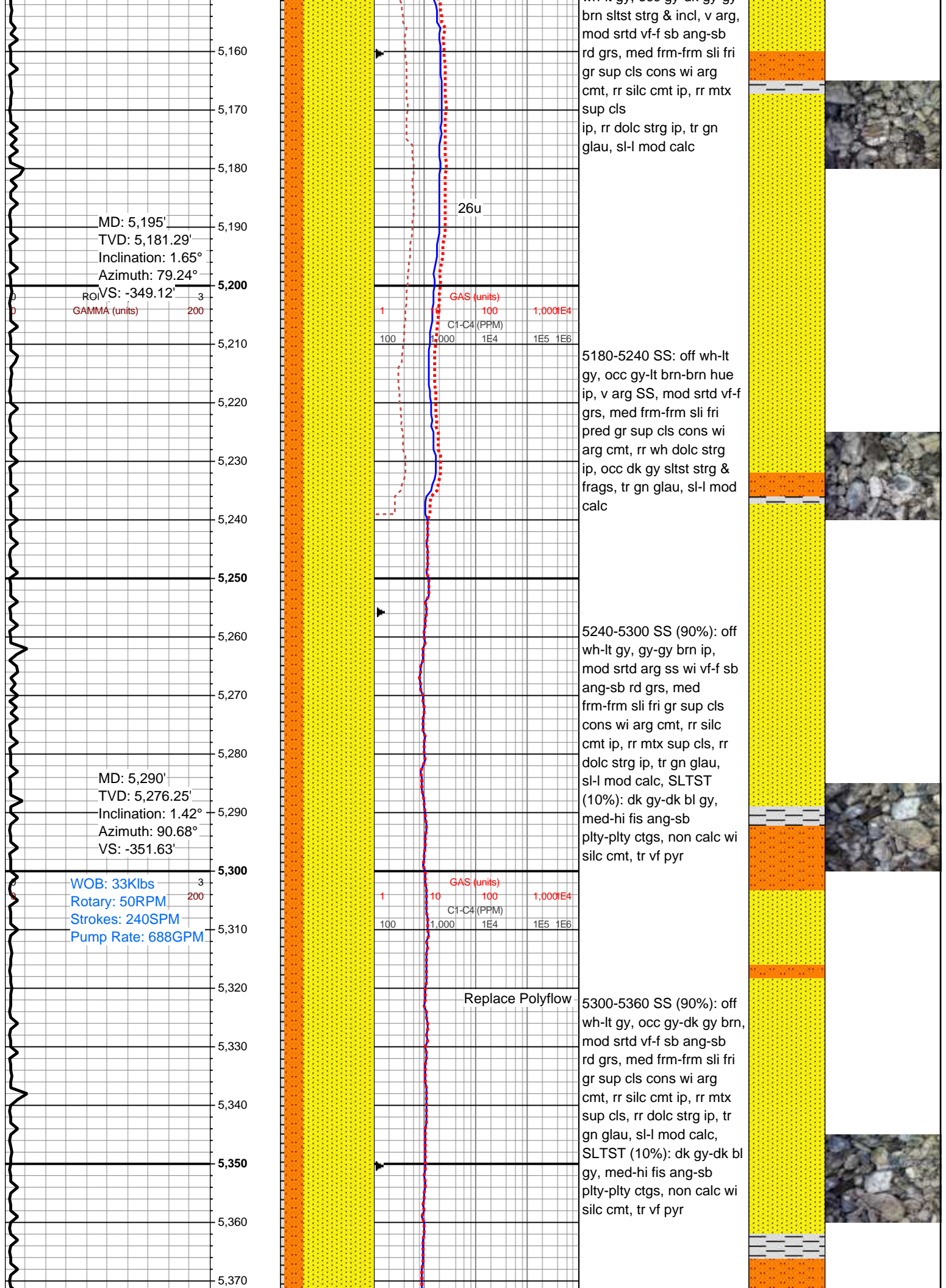
Core

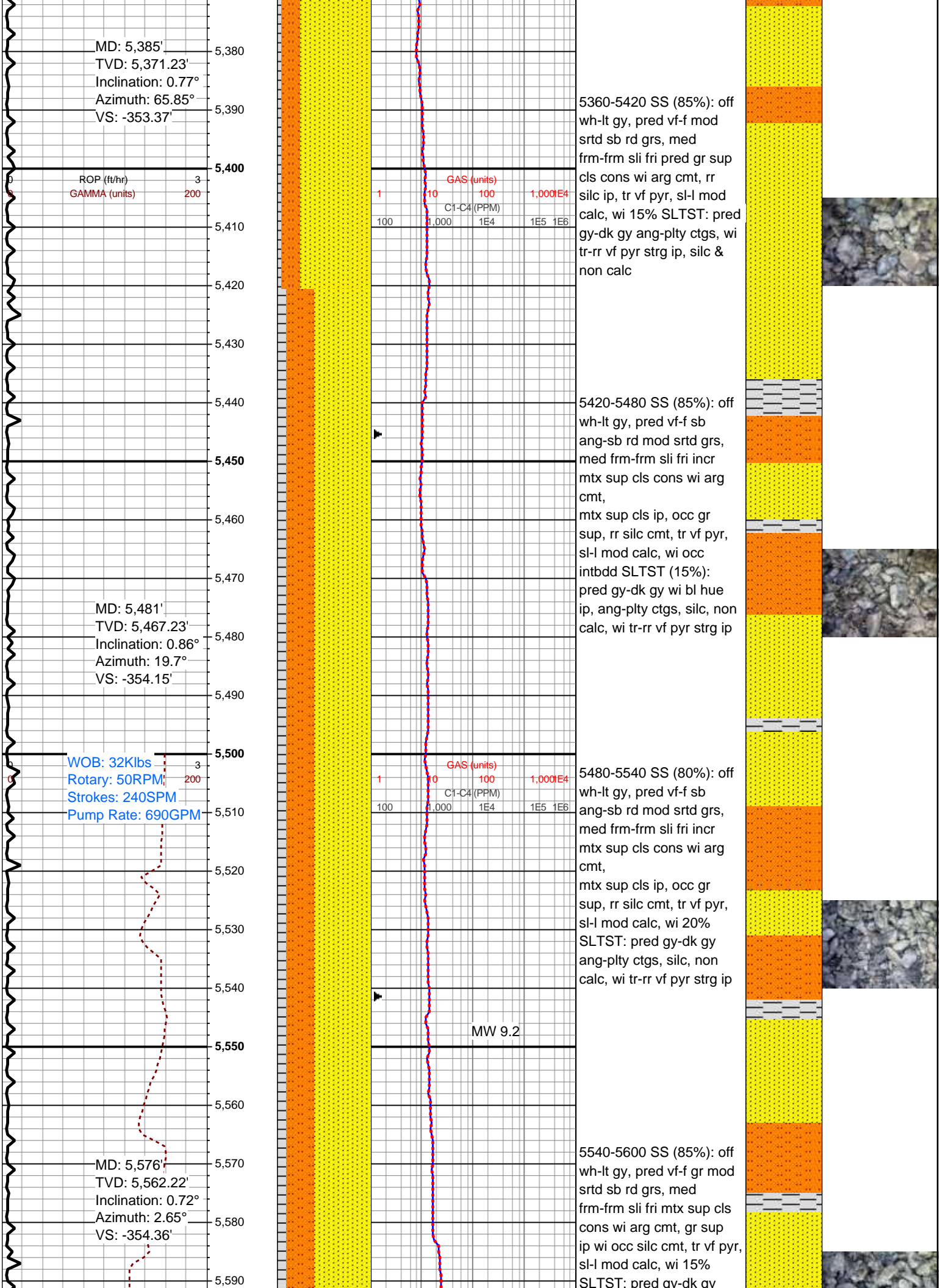
- ◀ SIDEWALL CORE (LEFT)
- ▶ SIDEWALL CORE (RIGHT)
- ▨ SLIDE
- DS SURVEY
- 🔥 TRIP GAS
- ◀ WIRELINE TESTED - LEFT
- ▶ WIRELINE TESTED - RT

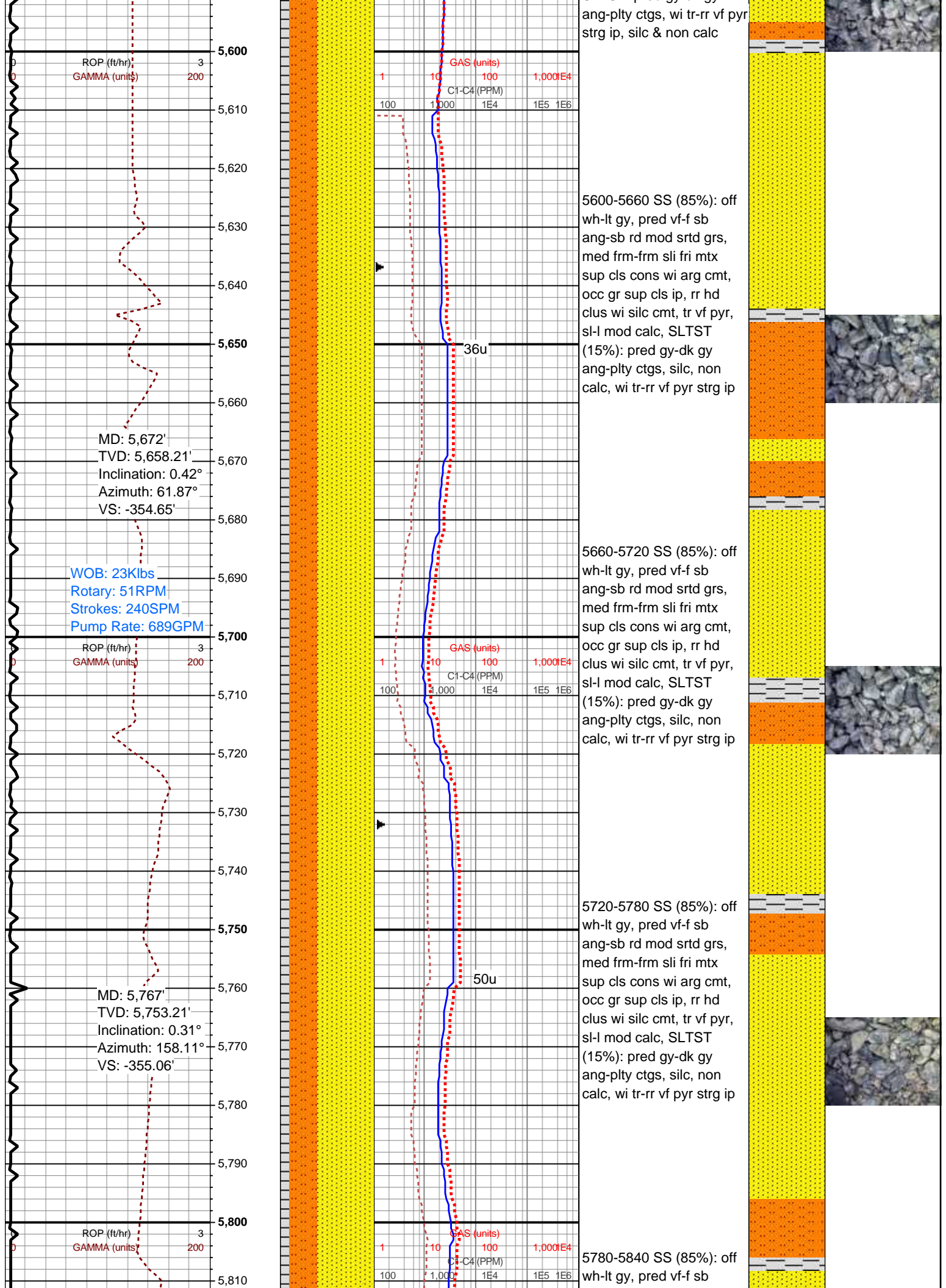
Textures

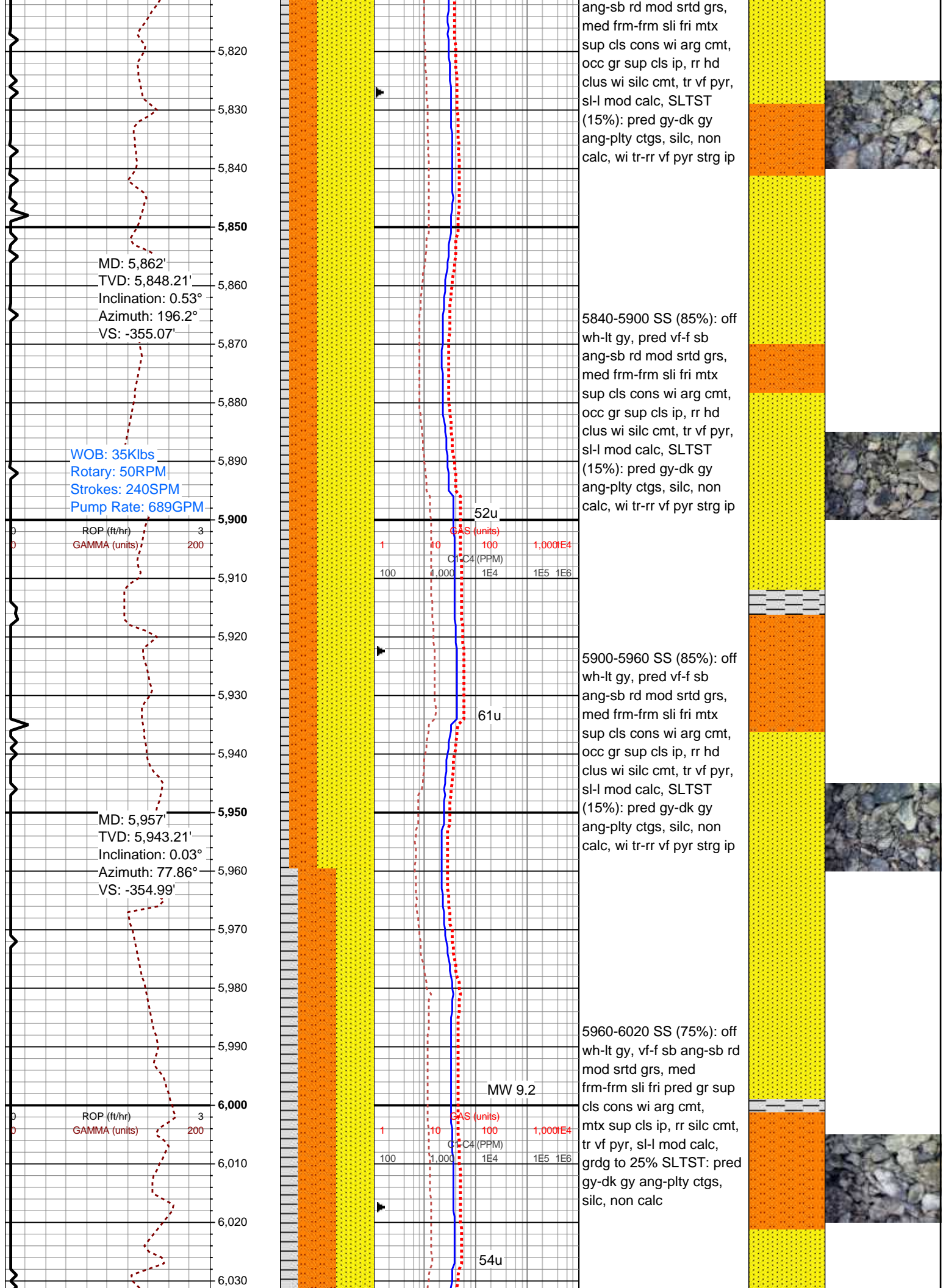
- BS BOUNDSTONE
- C CHALKY
- ✕ CRYPTOXLN
- E EARTHY
- F✕ FINELYXLN
- GS GRAINSTONE
- M MODERATE
- P POOR
- W WELL

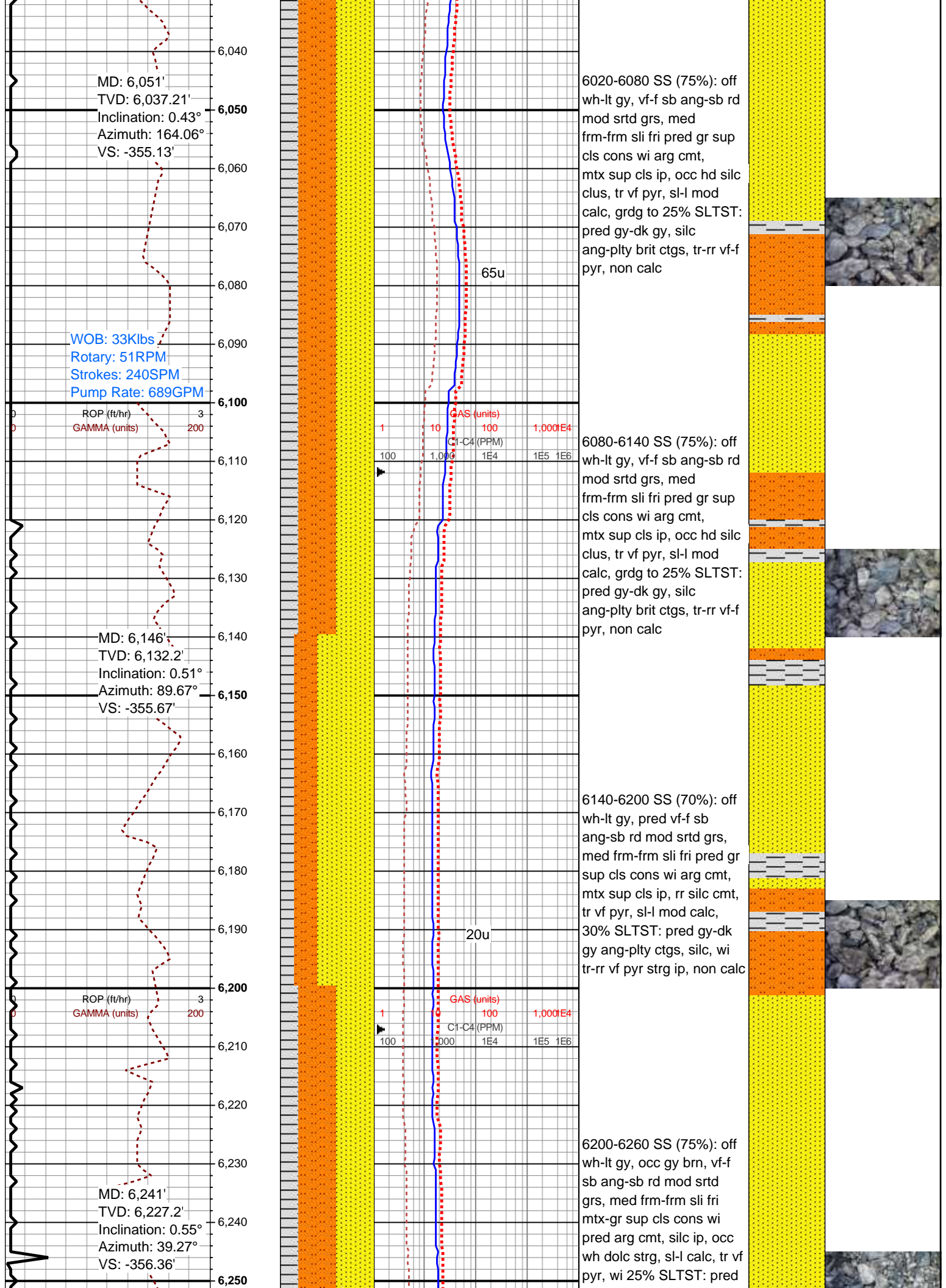


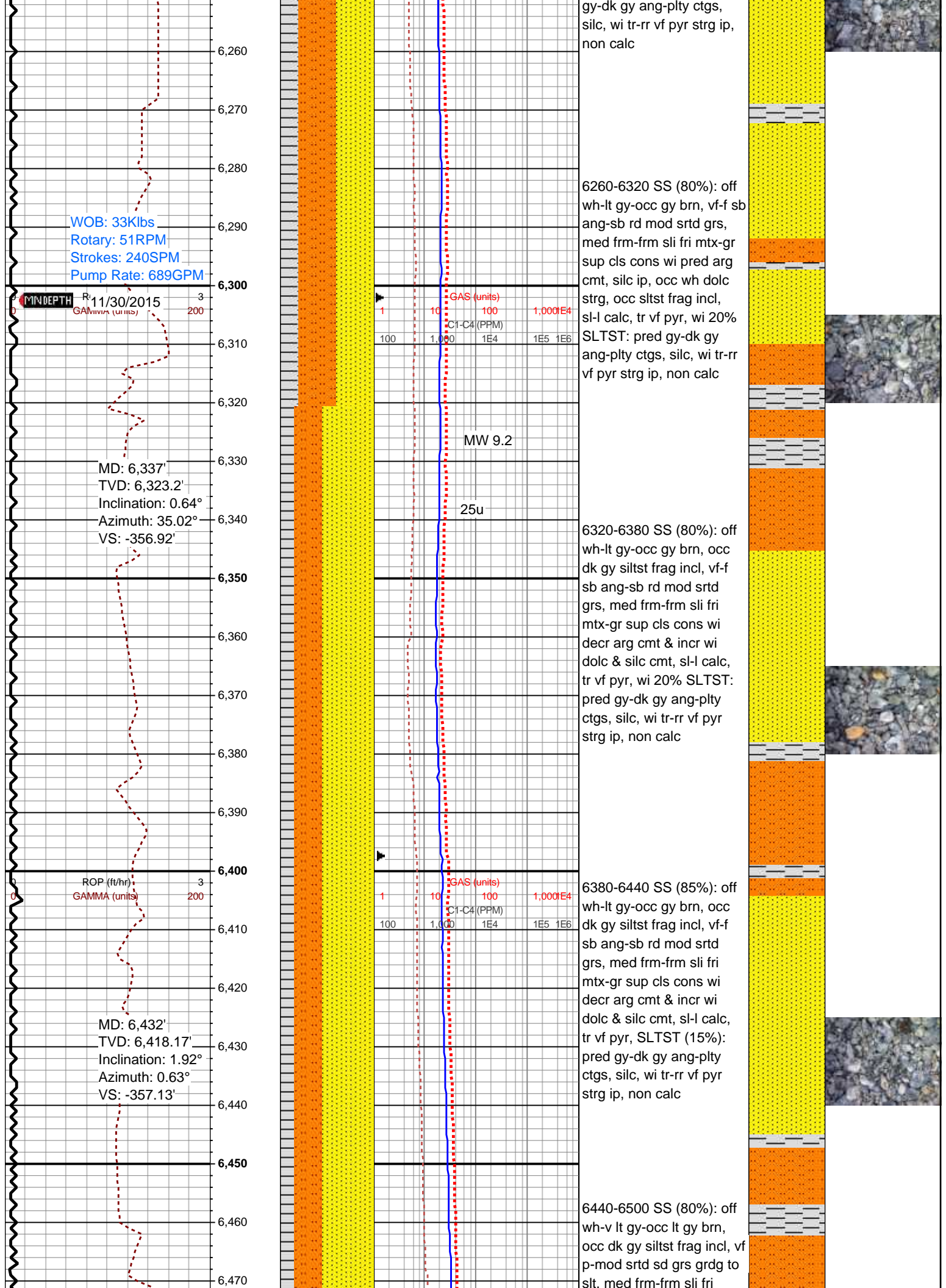


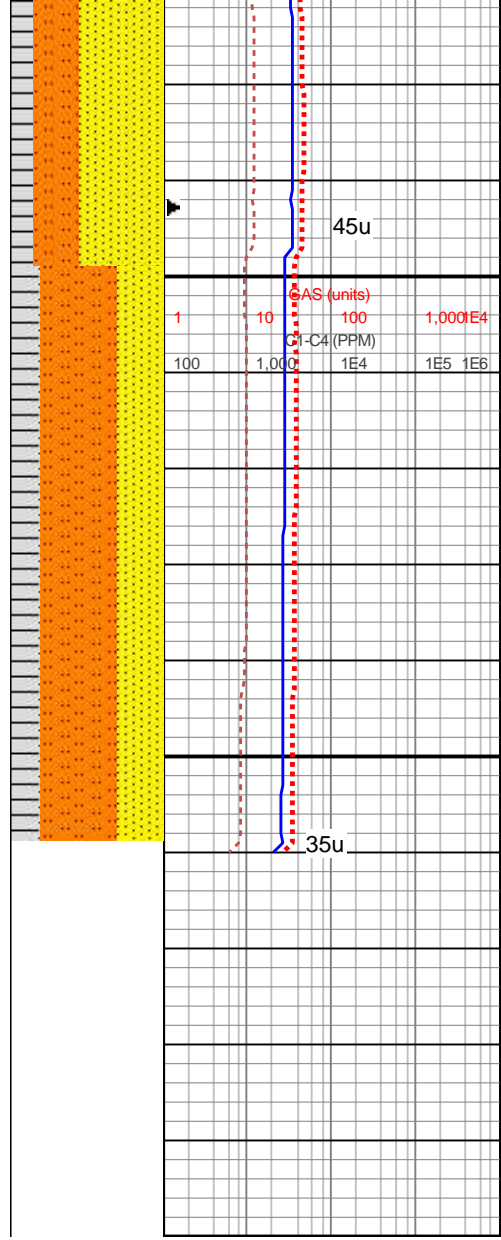
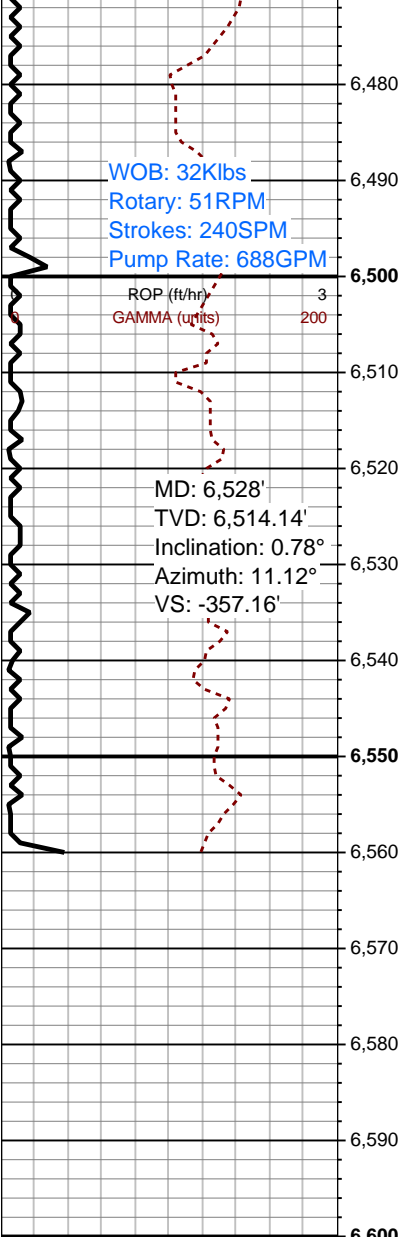












mtx-gr sup cls cons wi  
pred arg cmt, occ dolc &  
silc cmt, pred non calc, sl  
calc ip, tr vf pyr, grdg to  
20% SLTST: lt gy-gy-dk  
gy ang-pty ctgs, silc, wi  
tr-rr vf pyr strg ip, non calc

6500-6560 SLTY SH  
(60%): v lt gy-v lt gy tn,  
frm, sl hydrated med-hi  
fis sb ang-blky-tab ctgs, tr  
vf pyr, sl-mod calc, SS  
(20%): off wh-v lt gy-occ lt  
gy brn, occ dk gy siltst  
frag incl, vf p-mod srtd sd  
grs grdg to slt, med  
frm-frm sli fri mtx-gr sup  
cls cons wi pred arg cmt,  
occ dolc & silc cmt, pred  
non calc, sl calc ip, tr vf  
pyr, grdg to 20% SLTST:  
lt gy-gy-dk gy ang-pty  
ctgs, silc, wi tr-rr vf pyr  
strg ip, non calc

Log Continued in  
Horizontal Format