



GAMMA RAY

2" = 100' FEET MD

COMPANY : EXTRACTION OIL AND GAS
WELL : JANSSEN 10 PRODUCTION
FIELD : WATTENBERG
COUNTY : WELD
STATE : COLORADO
COUNTRY : U.S.A.
UWI : 05-123-42358-00

COMPANY : EXTRACTION OIL AND GAS
WELL : JANSSEN 10 PRODUCTION
FIELD : WATTENBERG
COUNTY : WELD
STATE : COLORADO
COUNTRY : U.S.A.
UWI : 05-123-42358-00

WELL LOCATION

LAT:40°30'9.734"N LONG:104°41'17.794"W
N:1427008.73 ft E:3225727.89 ft

SEC:8 TWP:6N RANGE:65W

OTHER SERVICES

DIRECTIONAL
ROP

DEPTH REF. : RKB

REF. HEIGHT : 24.500 ft

RKB to Ground Level

GROUND LEVEL : 4774.000 ft

G.L. to MEAN SEA LEVEL

BOREHOLE RECORD

DEVIATION RECORD

HOLE SIZE in	FROM ft	TO ft	INCLINATION deg	FROM ft	TO ft
13.5	0	1552	0 - 5	0	1425
7.875	1552	11183	5 - 7	1425	6432
			7 - 90	6432	7481
			90 - 93	7481	11183

CASING RECORD

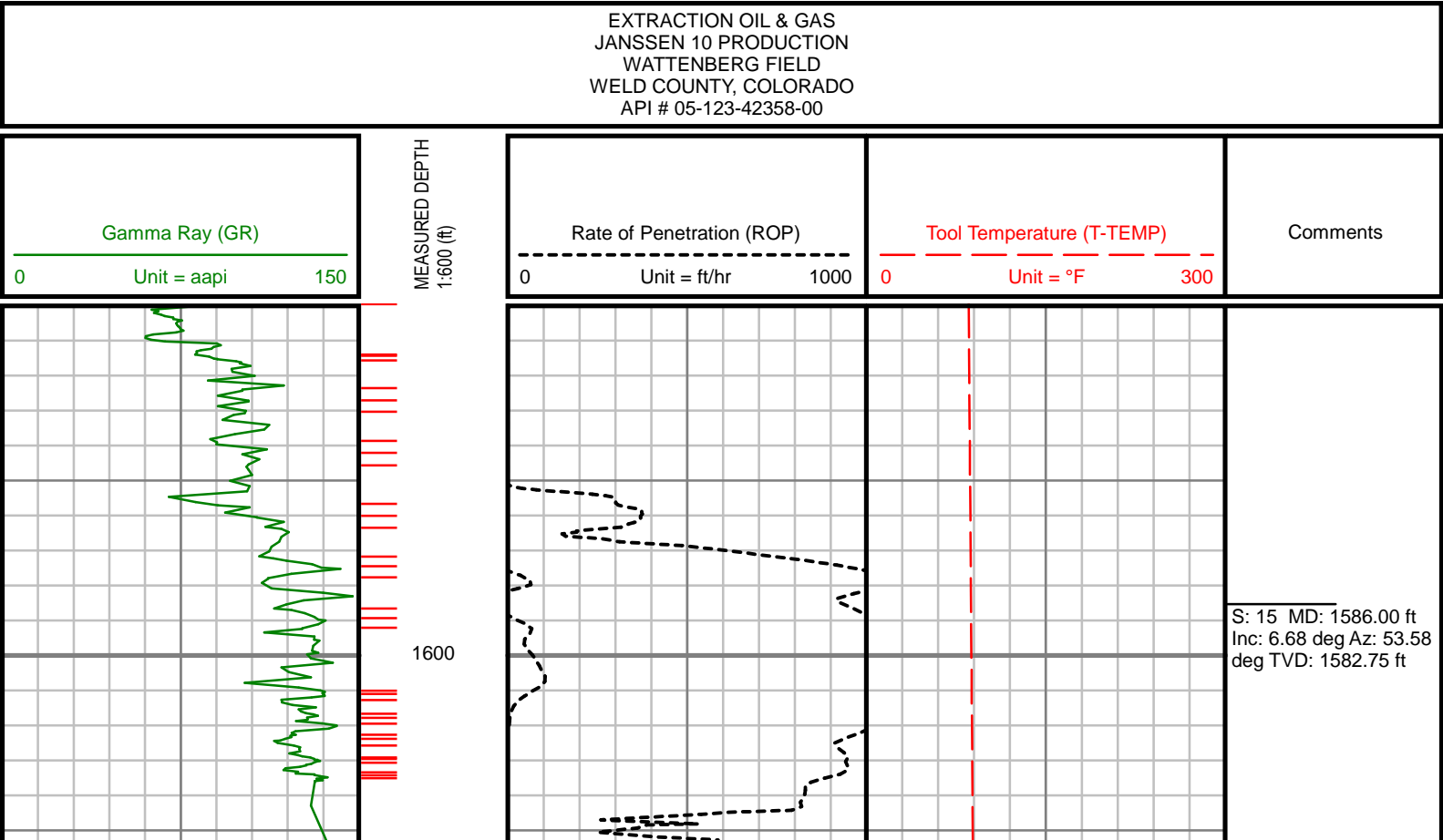
CASING SIZE in	FROM ft	TO ft	DRILLING CO. : PATTERSON RIG : 346 LWD UNIT NO. : DISTRICT : CASPER SPUD DATE : 11/13/2015 LWD START DATE : 11/26/2015 DEPTH : 1500 ft LWD END DATE : 11/28/2015 DEPTH : 11183 ft TOTAL DEPTH : 11183 ft		
9.625	0	1543			

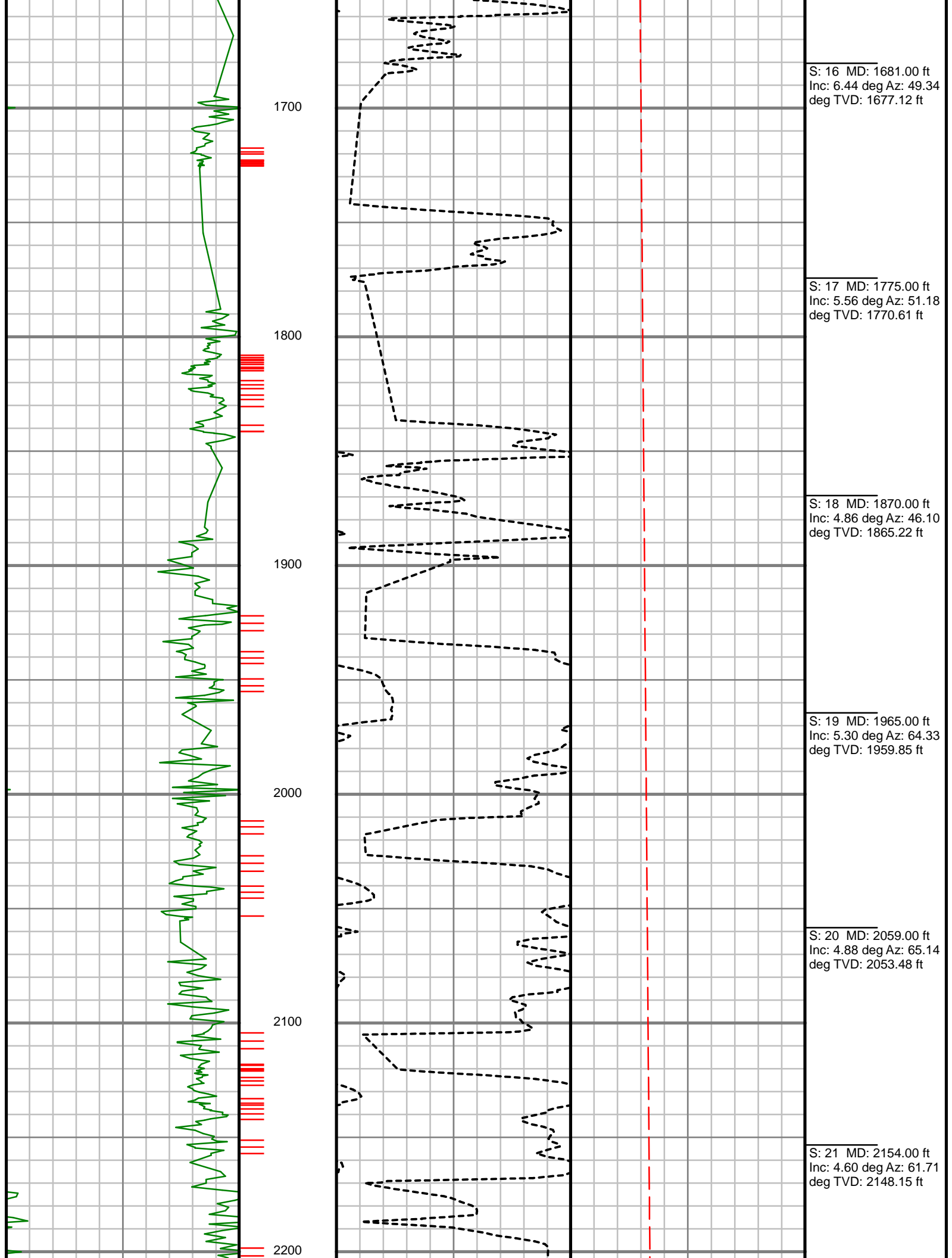
Run Data

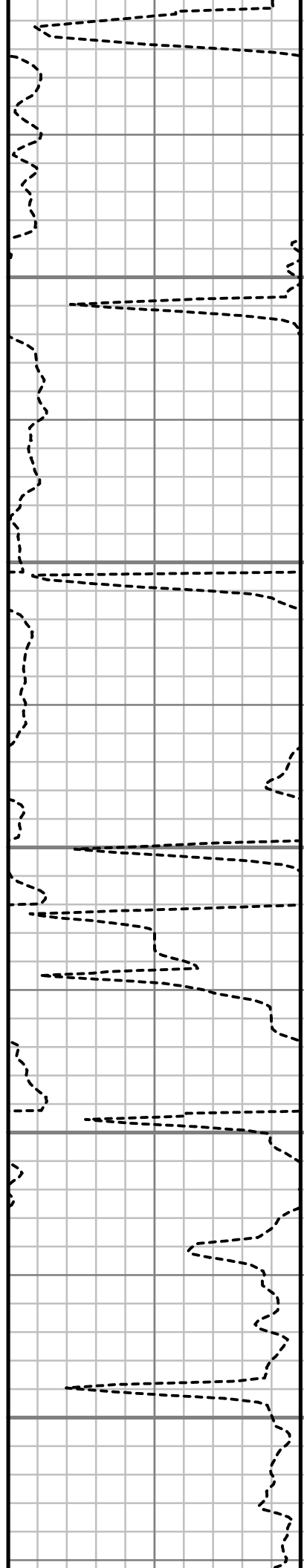
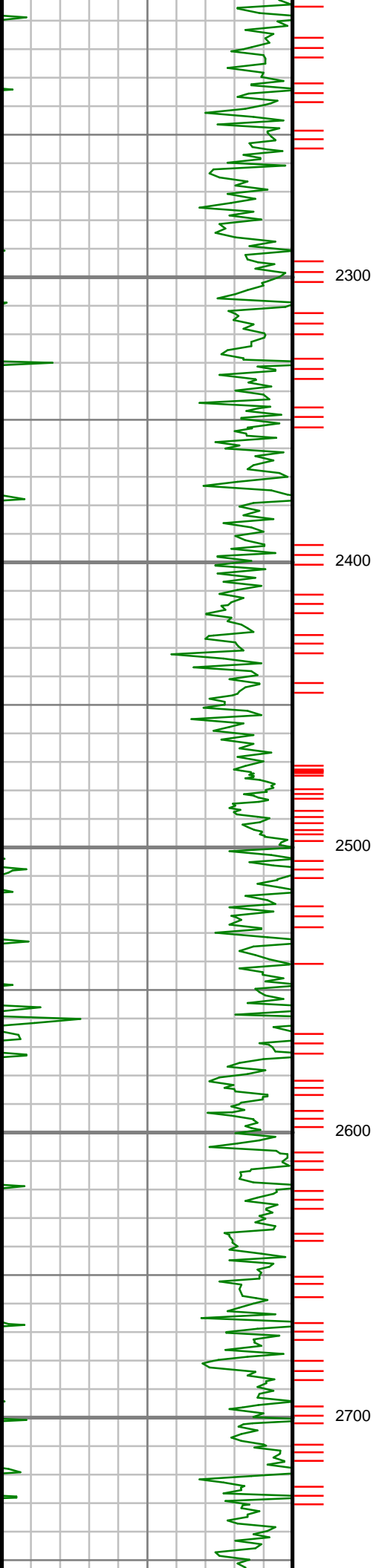
RUN NUMBER	1	2			
START DATE	11/26/2015	11/27/2015			
START TIME	0945	0530			
END DATE	11/27/2015	11/28/2015			
END TIME	0430	1000			
DEPTH IN (ft)	1552	6846			
DEPTH OUT (ft)	6846	11183			
LOG TOP (ft)	1500	6797			
LOG BOTTOM (ft)	6797	11183			
HOLE SIZE (in)	7.875	7.875			
MUD DATA @ (ft)	6846	6846			
MUD TYPE	OIL-BASED	OIL-BASED			
DENSITY (lb / gal)	9.1	9.1			
VISCOSITY (s / qt)	10	10			
pH	7.8	7.8			
FLUID LOSS (cm3 / 30)	-	-			
SALINITY (ppm)	-	-			
Rm (ohmm @ deg F)	-	-			
Rmf (ohmm @ deg F)	-	-			
MAX TEMP (deg F)	183	244			
Rm @ MAX TEMP (ohmm)	-	-			
LWD ENGINEER #1	M. SMITH	M. SMITH			
LWD ENGINEER #2	J. GREGORY	J. GREGORY			
LWD ENGINEER #3	-	-			
LOG WITNESS #1	-	-			
LOG WITNESS #2	-	-			

Remarks
EXTRACTION OIL AND GAS PRODUCTION AFE# 14-800
SCIENTIFIC DRILLING INTERNATIONAL JOB# 329441
ALL REFERENCES IN THE DEPTH TRACK ARE AT BIT DEPTH.
ALL DATA IS MEMORY DATA UNLESS STATED OTHERWISE.
FLAT AVERAGE FILTER OF 1.00 FT APPLIED TO GAMMA RAY CURVE
FLAT AVERAGE FILTER OF 1.00 FT APPLIED TO RATE OF PENETRATION CURVE
FLAT AVERAGE FILTER OF 1.00 FT APPLIED TO TOOL TEMPERATURE CURVE
RUN #1 : MWD / GAMMA RAY LOGGING RUN
SENSORS S/N: PULSER = 128-132 / CONT = 863 / MWD EYE = 0087 / GAMMA RAY = 1210
BIT TO SENSOR OFFSETS: SURVEY = 57.74 / GAMMA RAY = 49.05
RUN #2 : MWD / GAMMA RAY LOGGING RUN
SENSORS S/N: PULSER = 128-132 / CONT = 863 / MWD EYE = 0087 / GAMMA RAY = 1210
BIT TO SENSOR OFFSETS: SURVEY = 57.70 / GAMMA RAY = 49.01
MNEMONICS LIST:
GR = GAMMA RAY
ROP = RATE OF PENETRATION
T-TEMP = TOOL TEMPERATURE

All interpretations are opinions based on inferences from electrical or other measurements and we cannot, and do not guarantee the accuracy or correctness of any interpretations, and we shall not, except in the case of gross or willful negligence on our part, be liable or responsible for any loss, costs, damages or expenses incurred or sustained by anyone resulting from any interpretation made by any of our officers, agents or employees. These interpretations are also subject to our general terms and conditions as set out in our current price schedule.







S: 22 MD: 2249.00 ft
Inc: 6.05 deg Az: 67.78
deg TVD: 2242.74 ft

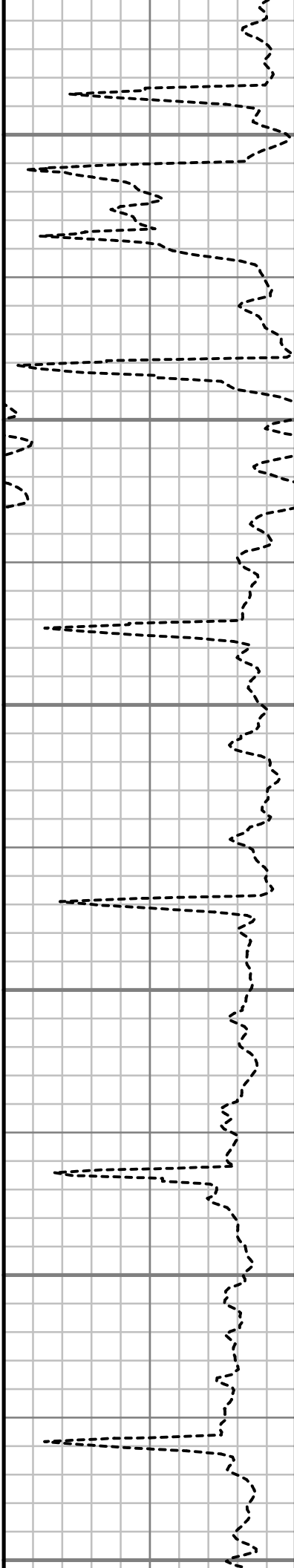
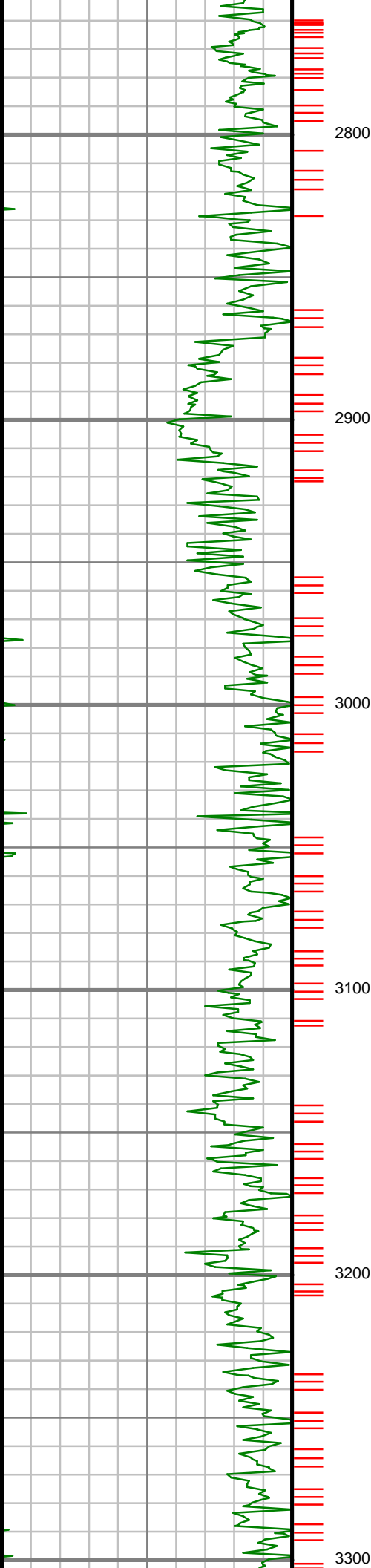
S: 23 MD: 2344.00 ft
Inc: 5.70 deg Az: 65.10
deg TVD: 2337.24 ft

S: 24 MD: 2439.00 ft
Inc: 5.11 deg Az: 63.90
deg TVD: 2431.82 ft

S: 25 MD: 2535.00 ft
Inc: 5.30 deg Az: 86.30
deg TVD: 2527.43 ft

S: 26 MD: 2629.00 ft
Inc: 5.43 deg Az: 90.91
deg TVD: 2621.02 ft

S: 27 MD: 2723.00 ft
Inc: 4.63 deg Az: 99.82
deg TVD: 2714.66 ft



S: 28 MD: 2818.00 ft
Inc: 5.98 deg Az: 82.43
deg TVD: 2809.26 ft

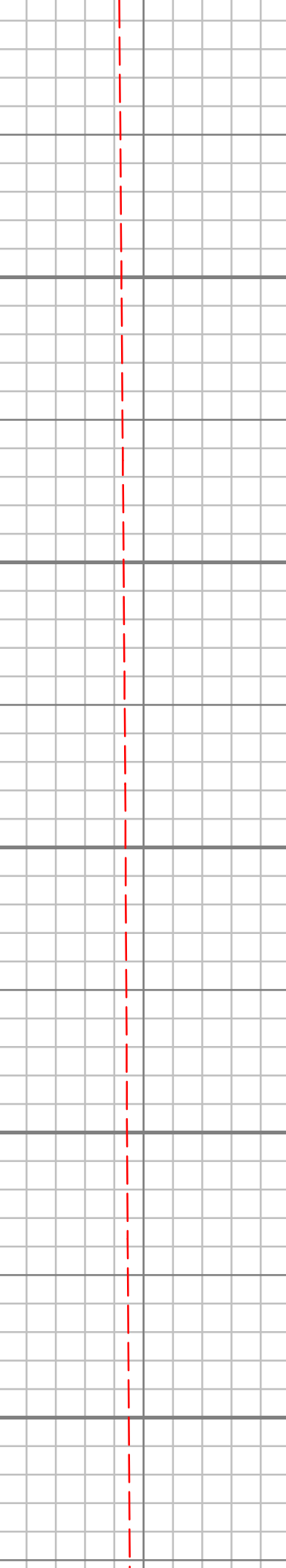
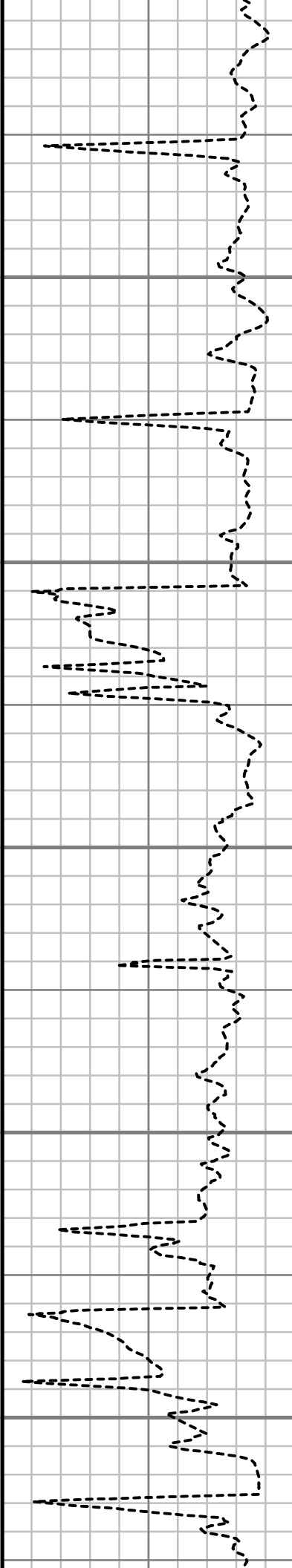
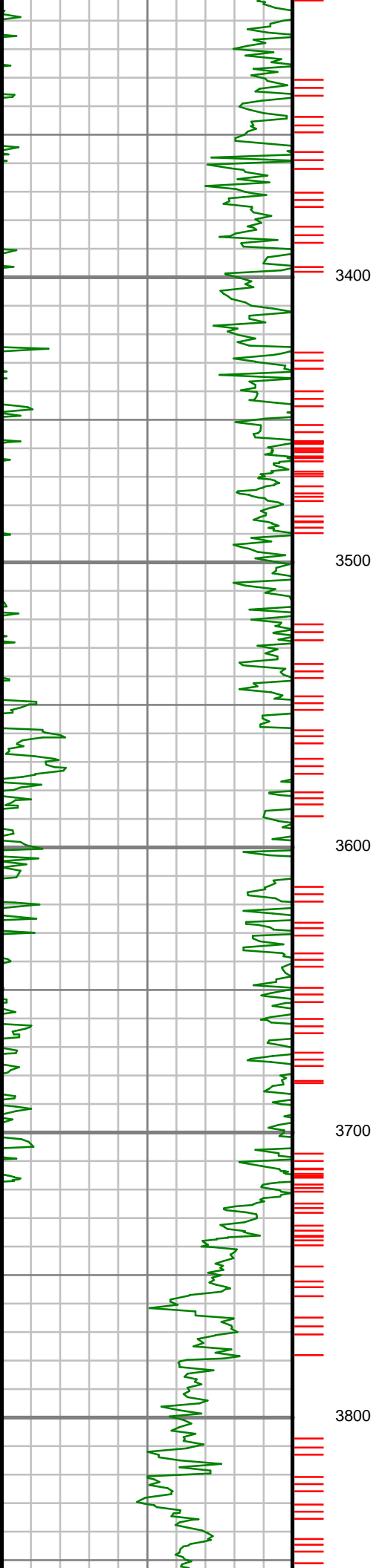
S: 29 MD: 2913.00 ft
Inc: 6.58 deg Az: 82.51
deg TVD: 2903.69 ft

S: 30 MD: 3009.00 ft
Inc: 6.49 deg Az: 80.61
deg TVD: 2999.06 ft

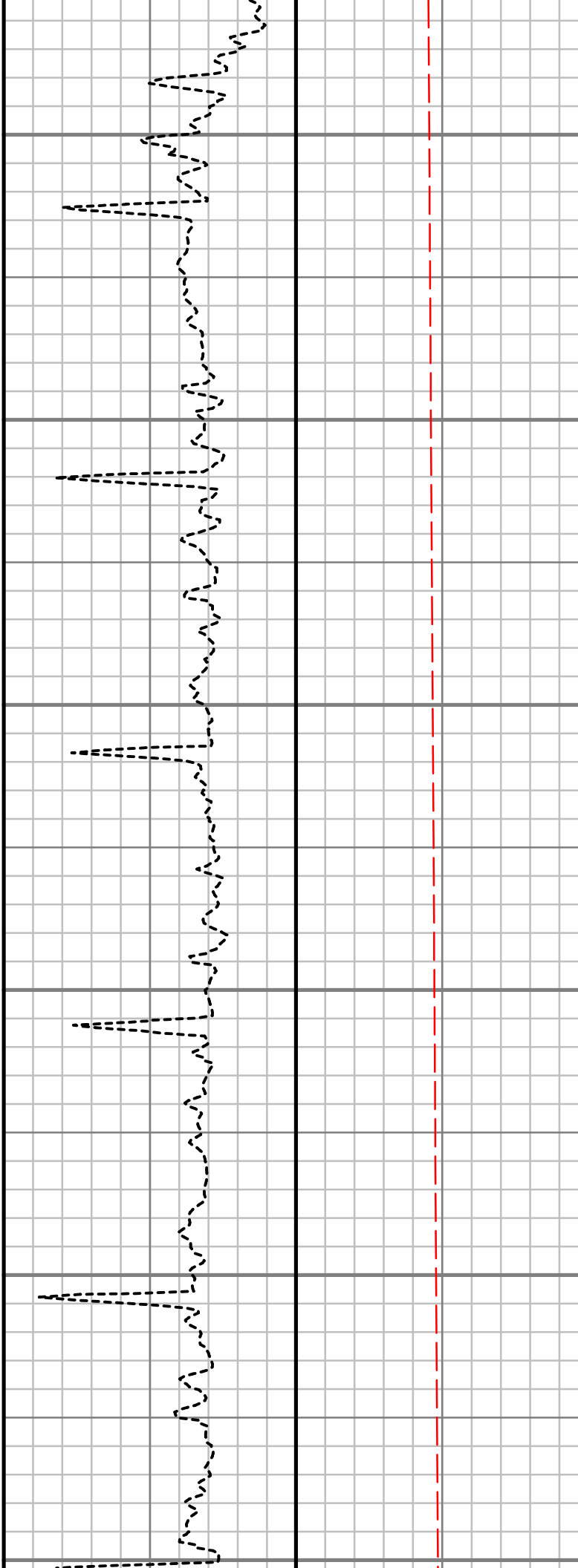
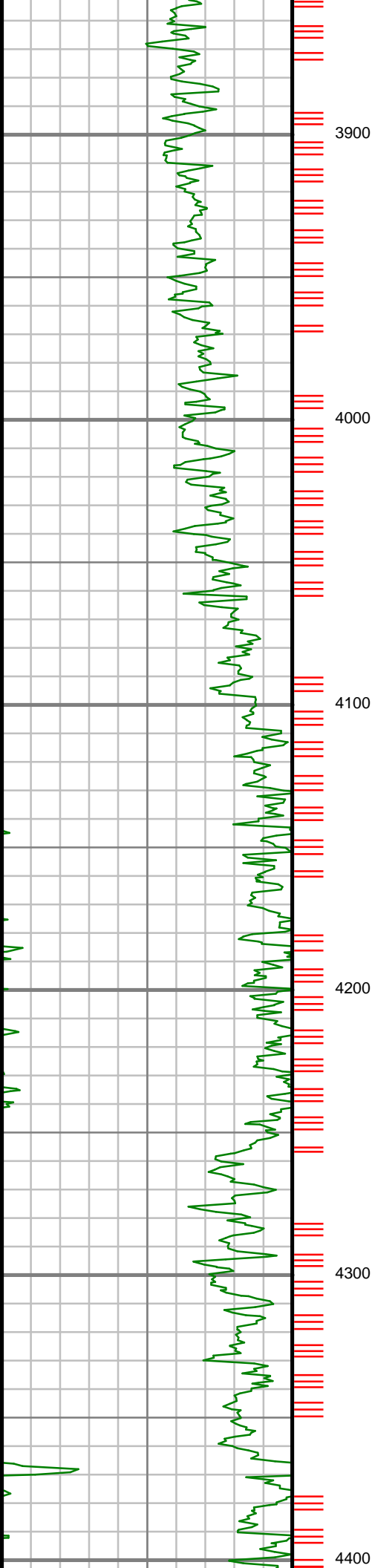
S: 31 MD: 3103.00 ft
Inc: 5.73 deg Az: 79.20
deg TVD: 3092.53 ft

S: 32 MD: 3198.00 ft
Inc: 5.40 deg Az: 78.56
deg TVD: 3187.08 ft

S: 33 MD: 3294.00 ft
Inc: 4.65 deg Az: 82.17
deg TVD: 3288.61 ft



Inc: 4.65 deg Az: 83.17 deg TVD: 3282.71 ft
S: 34 MD: 3389.00 ft Inc: 3.48 deg Az: 100.89 deg TVD: 3377.47 ft
S: 35 MD: 3484.00 ft Inc: 3.08 deg Az: 108.66 deg TVD: 3472.32 ft
S: 36 MD: 3579.00 ft Inc: 4.56 deg Az: 77.20 deg TVD: 3567.11 ft
S: 37 MD: 3674.00 ft Inc: 4.55 deg Az: 83.41 deg TVD: 3661.81 ft
S: 38 MD: 3770.00 ft Inc: 5.48 deg Az: 74.00 deg TVD: 3757.45 ft



S: 39 MD: 3865.00 ft
Inc: 7.47 deg Az: 60.74
deg TVD: 3851.84 ft

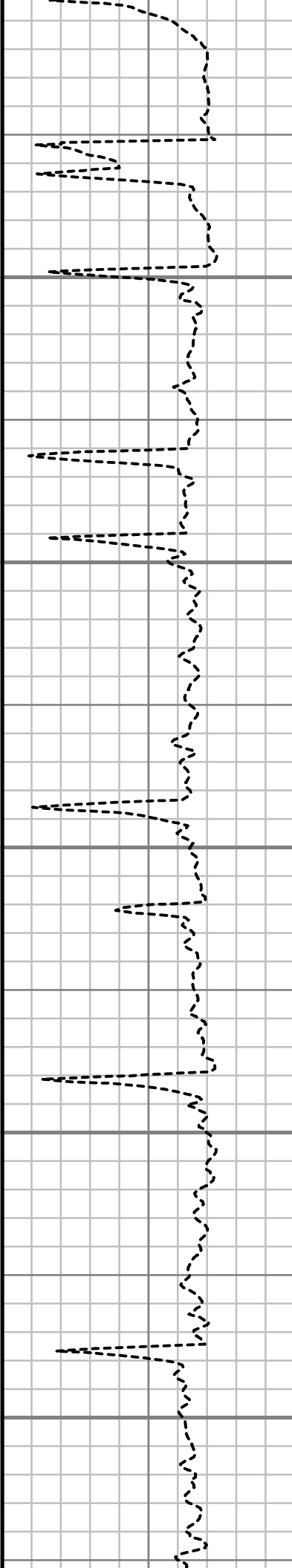
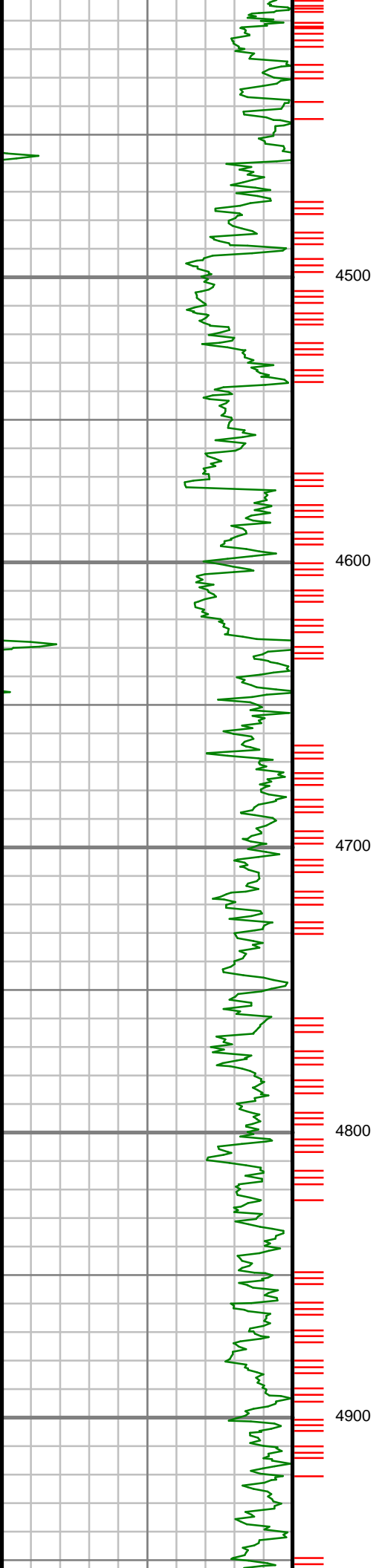
S: 40 MD: 3960.00 ft
Inc: 7.27 deg Az: 61.76
deg TVD: 3946.06 ft

S: 41 MD: 4056.00 ft
Inc: 7.65 deg Az: 62.77
deg TVD: 4041.24 ft

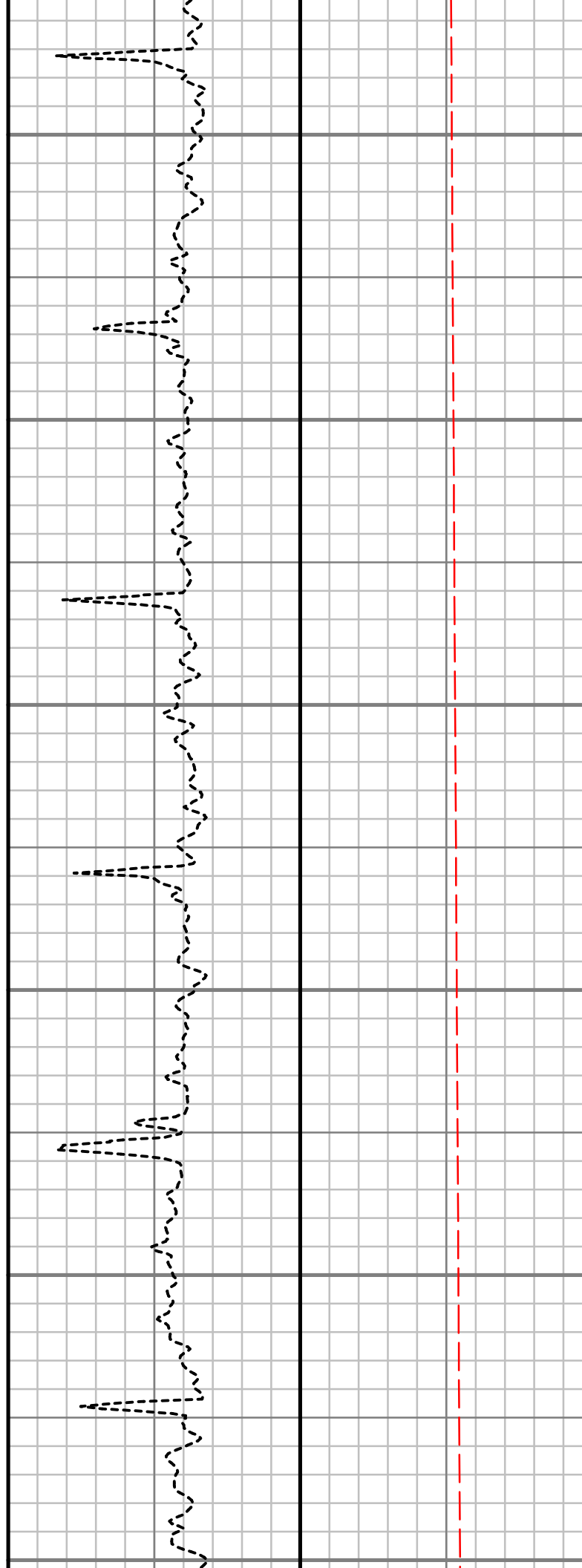
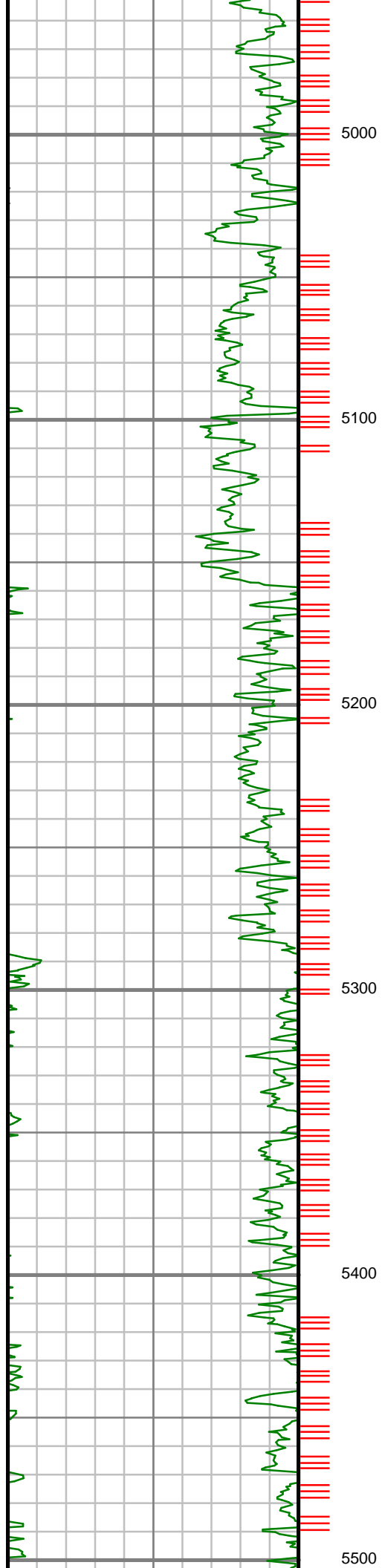
S: 42 MD: 4150.00 ft
Inc: 7.08 deg Az: 63.40
deg TVD: 4134.47 ft

S: 43 MD: 4245.00 ft
Inc: 6.20 deg Az: 63.52
deg TVD: 4228.83 ft

S: 44 MD: 4341.00 ft
Inc: 5.61 deg Az: 65.14
deg TVD: 4324.32 ft



S: 45	MD: 4437.00 ft
Inc: 4.89 deg	Az: 67.43
deg TVD: 4419.92 ft	
S: 46	MD: 4532.00 ft
Inc: 4.45 deg	Az: 66.22
deg TVD: 4514.60 ft	
S: 47	MD: 4626.00 ft
Inc: 4.07 deg	Az: 69.66
deg TVD: 4608.34 ft	
S: 48	MD: 4721.00 ft
Inc: 3.53 deg	Az: 68.32
deg TVD: 4703.13 ft	
S: 49	MD: 4816.00 ft
Inc: 3.16 deg	Az: 66.98
deg TVD: 4797.97 ft	
S: 50	MD: 4910.00 ft
Inc: 2.56 deg	Az: 68.37
deg TVD: 4891.85 ft	



S: 51 MD: 5005.00 ft
Inc: 1.89 deg Az: 73.29
deg TVD: 4986.78 ft

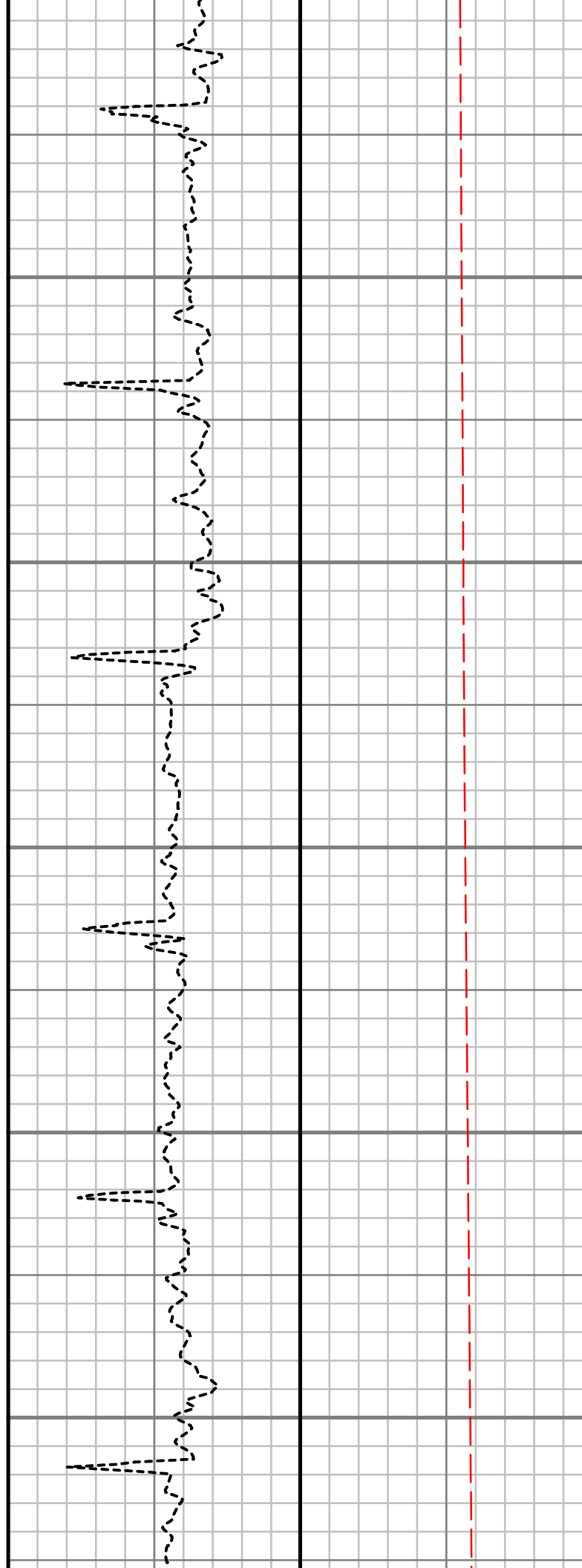
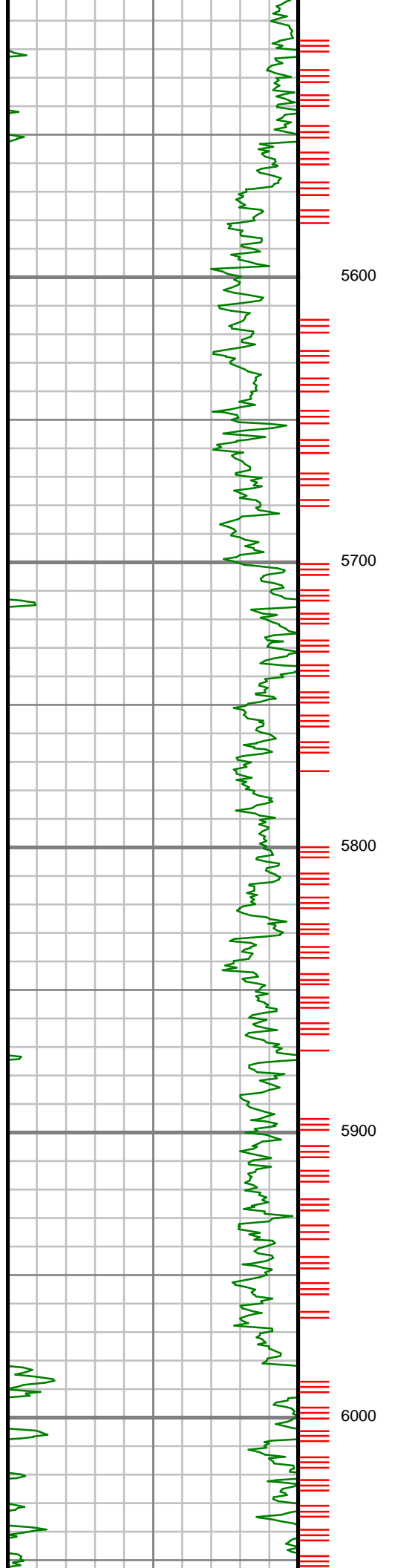
S: 52 MD: 5100.00 ft
Inc: 1.84 deg Az: 70.99
deg TVD: 5081.73 ft

S: 53 MD: 5195.00 ft
Inc: 1.38 deg Az: 86.84
deg TVD: 5176.70 ft

S: 54 MD: 5290.00 ft
Inc: 1.26 deg Az: 64.31
deg TVD: 5271.67 ft

S: 55 MD: 5385.00 ft
Inc: 1.25 deg Az: 55.81
deg TVD: 5366.65 ft

S: 56 MD: 5481.00 ft
Inc: 1.38 deg Az: 44.11
deg TVD: 5462.62 ft



S: 57 MD: 5576.00 ft
Inc: 1.75 deg Az: 30.11
deg TVD: 5557.59 ft

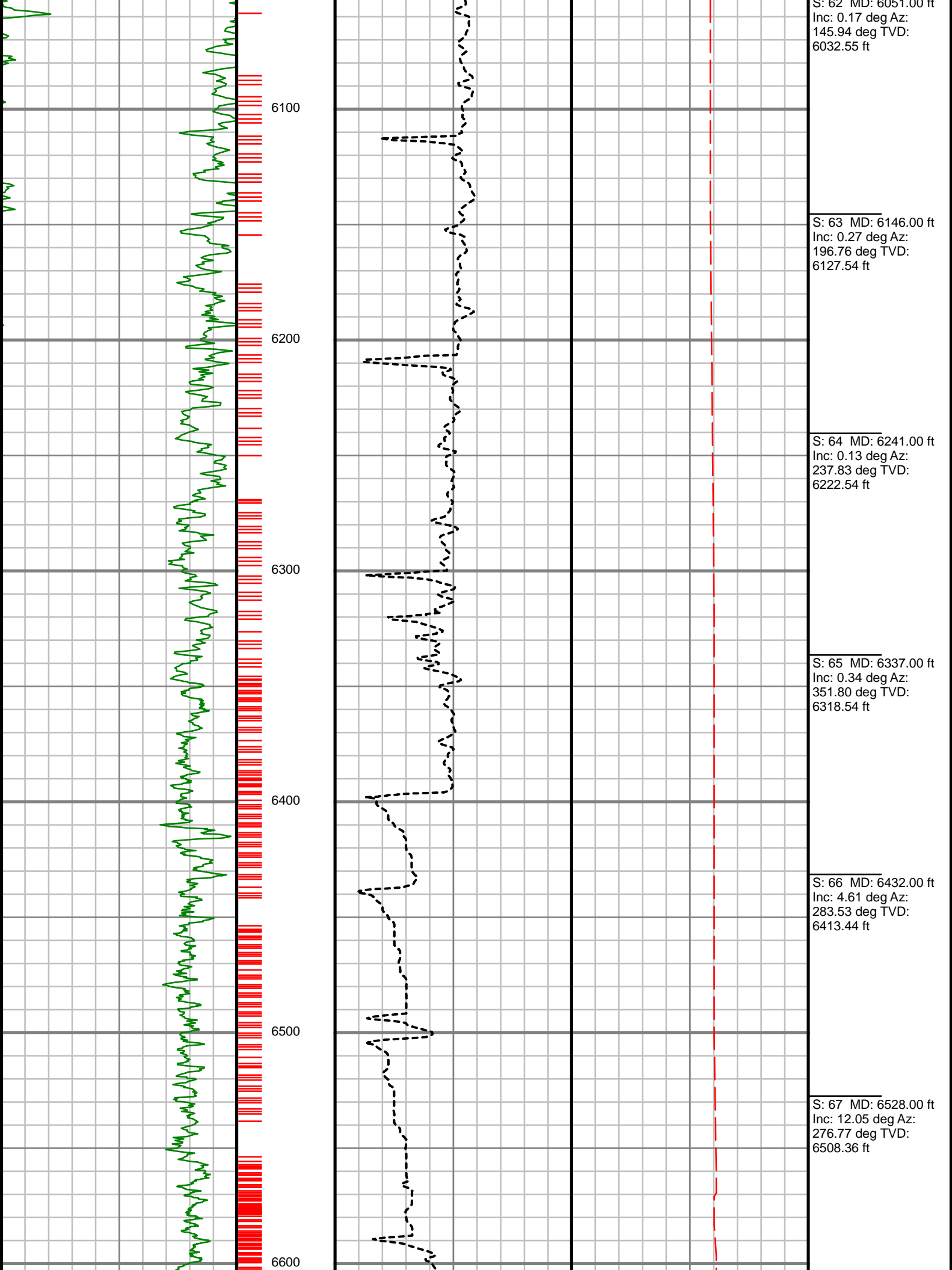
S: 58 MD: 5672.00 ft
Inc: 0.99 deg Az: 32.97
deg TVD: 5653.56 ft

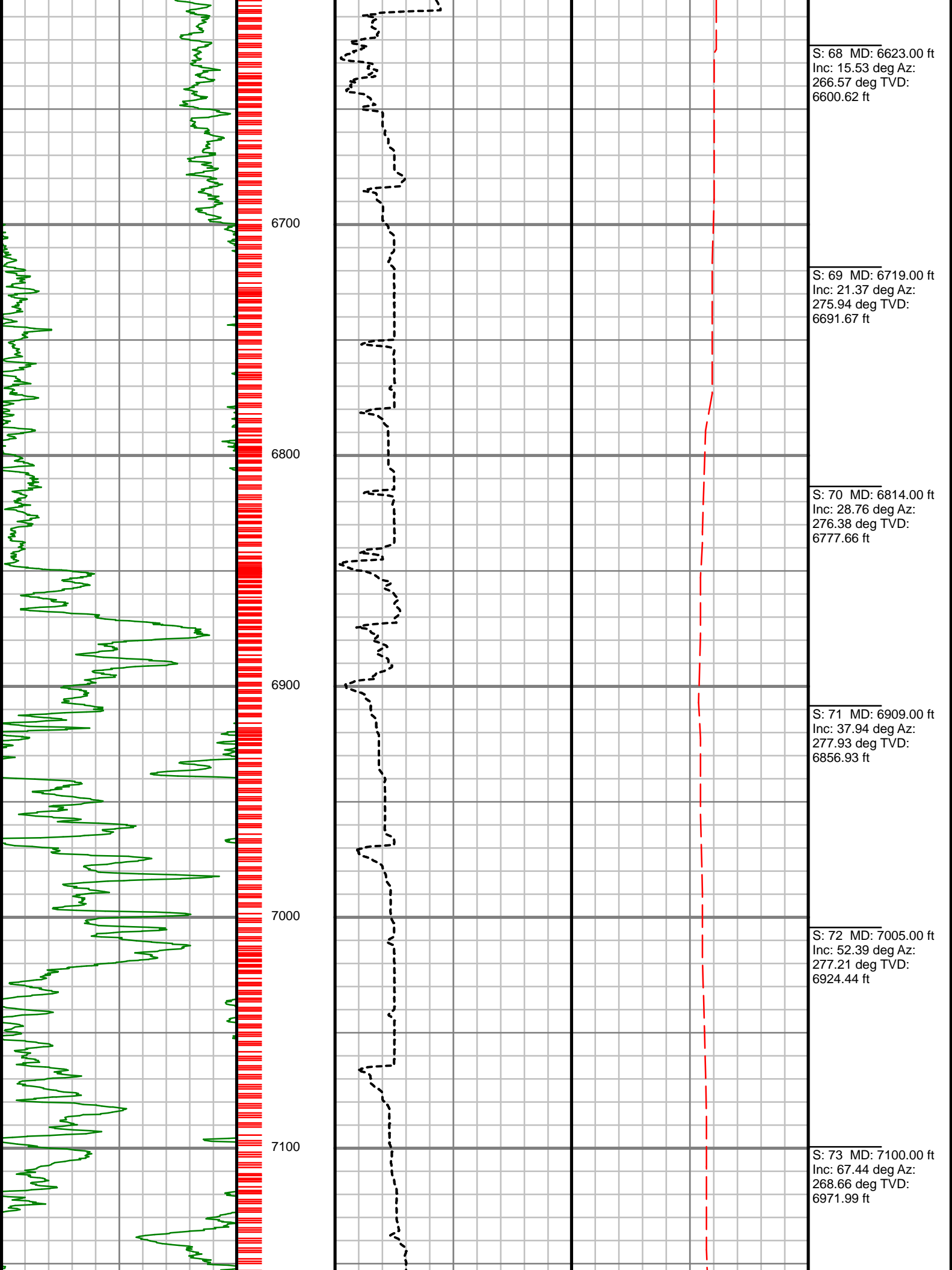
S: 59 MD: 5767.00 ft
Inc: 0.63 deg Az: 55.13
deg TVD: 5748.55 ft

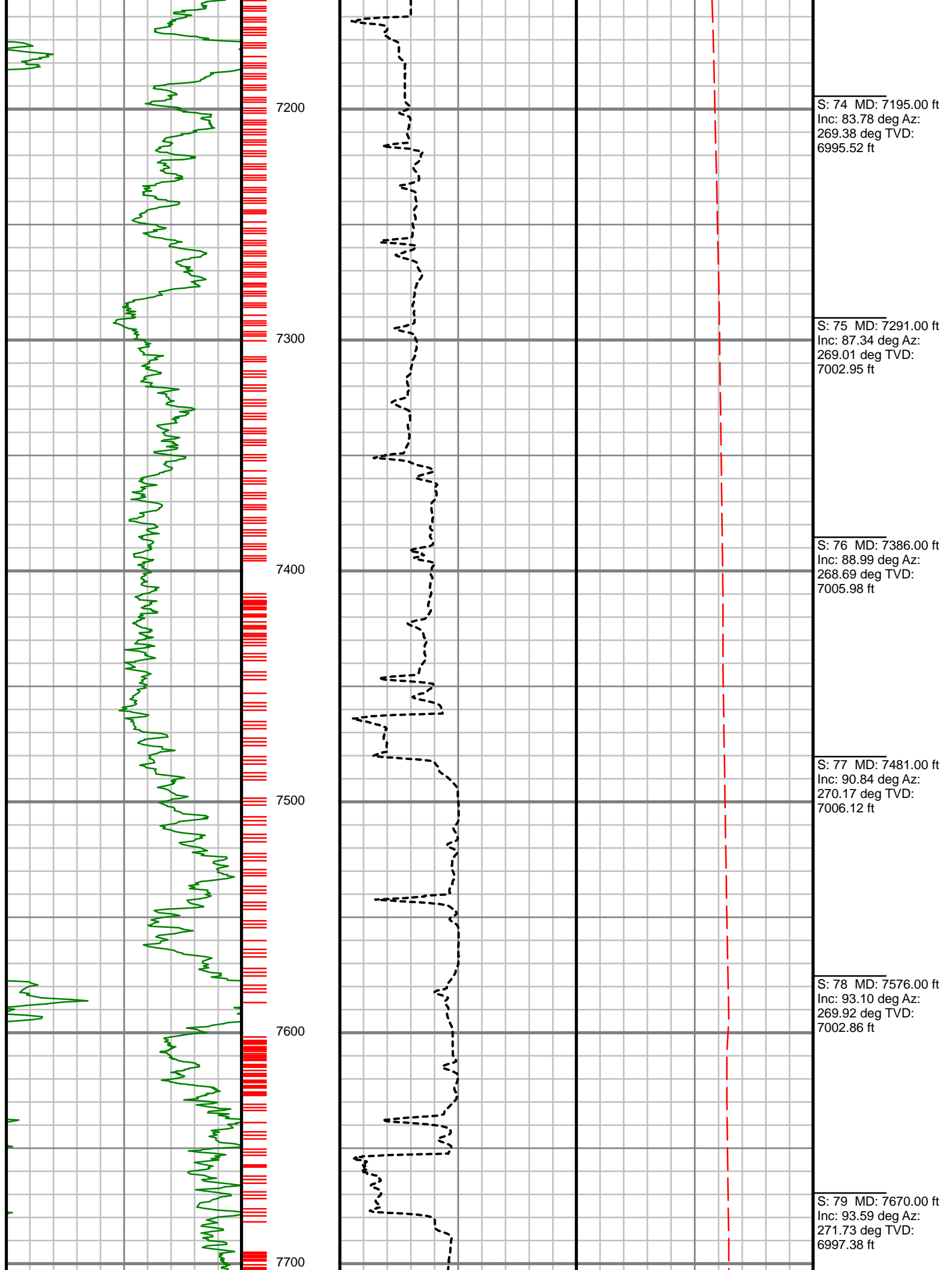
S: 60 MD: 5862.00 ft
Inc: 0.38 deg Az:
101.10 deg TVD:
5843.55 ft

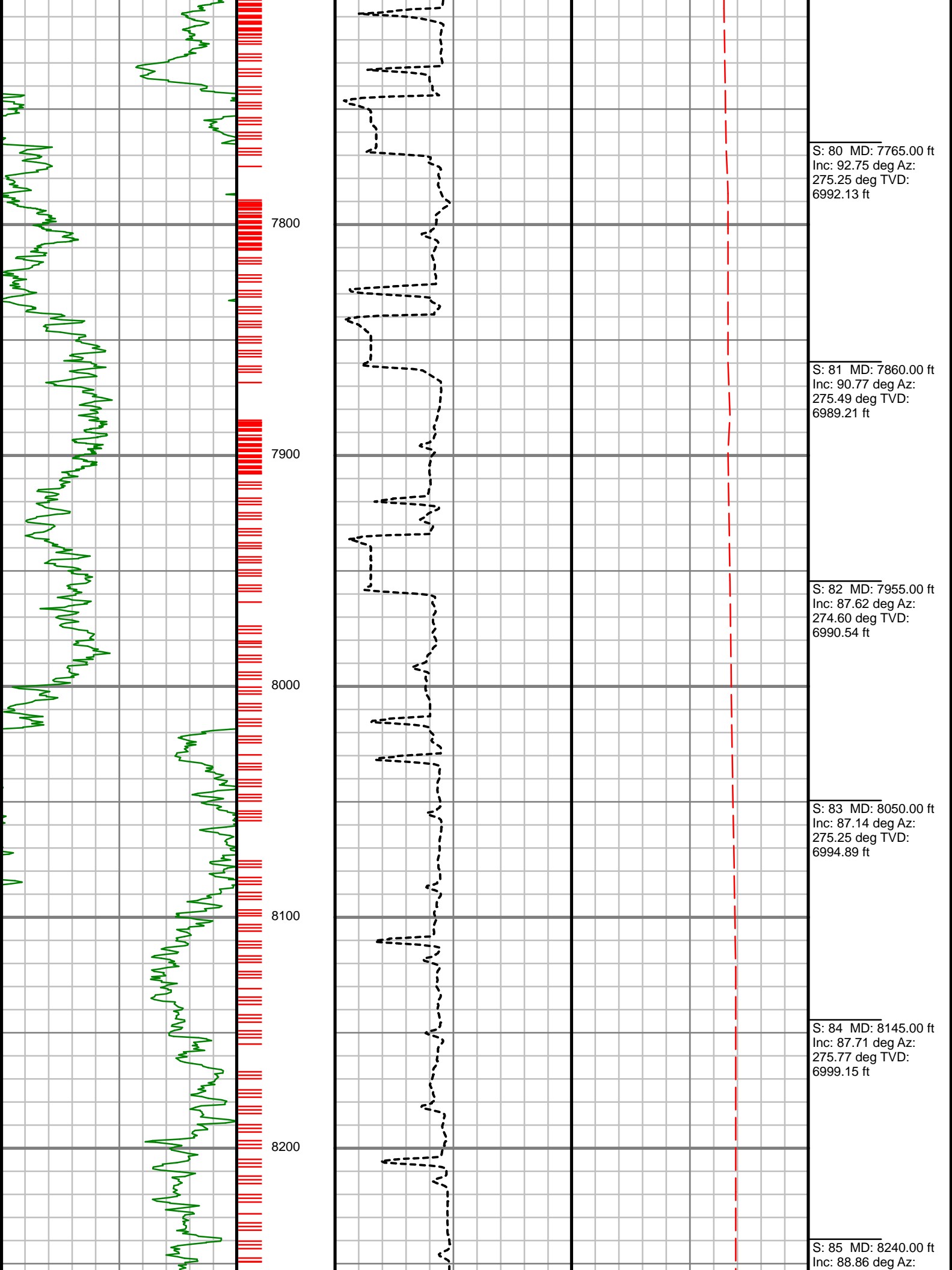
S: 61 MD: 5957.00 ft
Inc: 0.12 deg Az:
131.18 deg TVD:
5938.55 ft

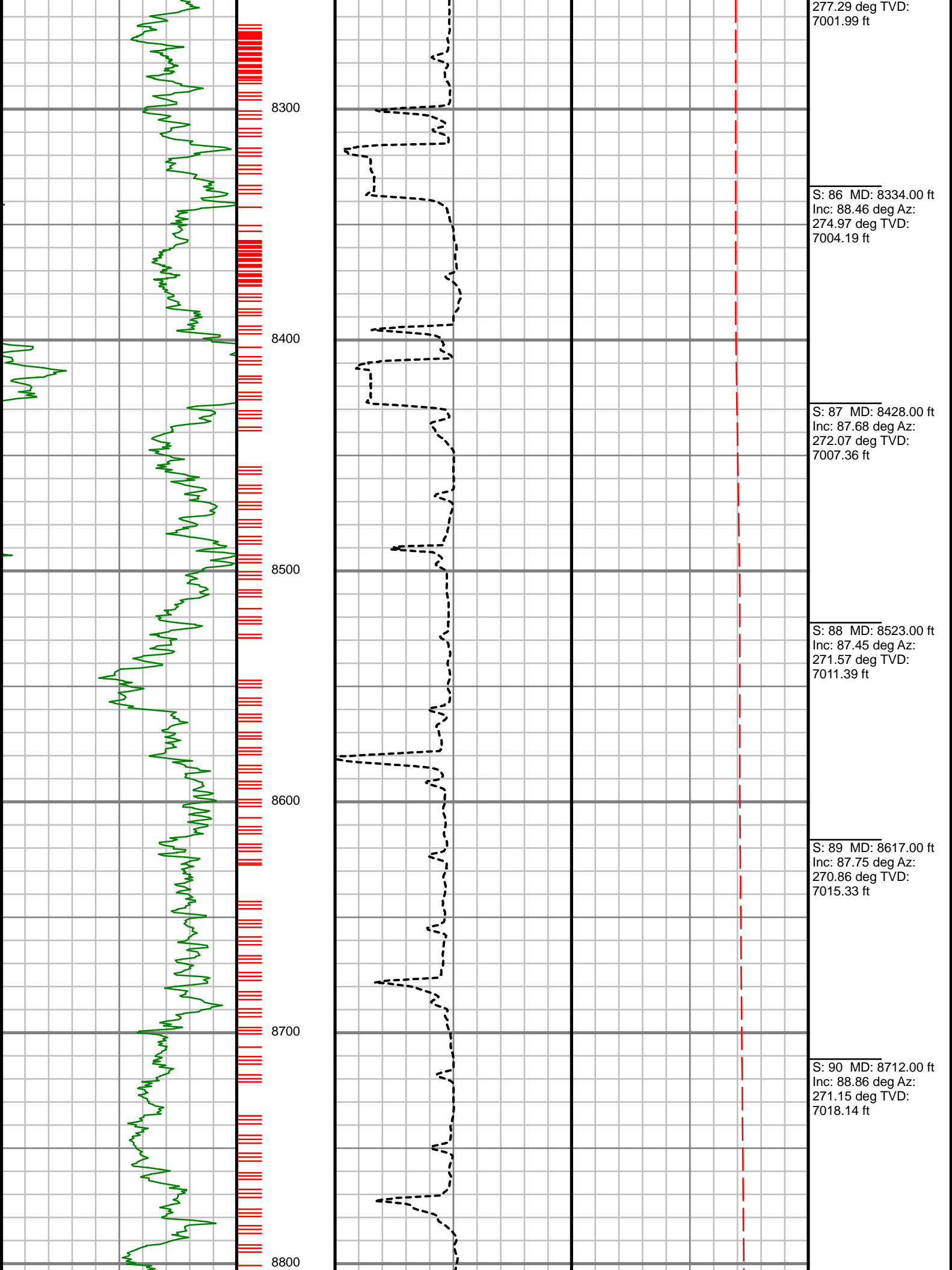
S: 62 MD: 6051.00 ft

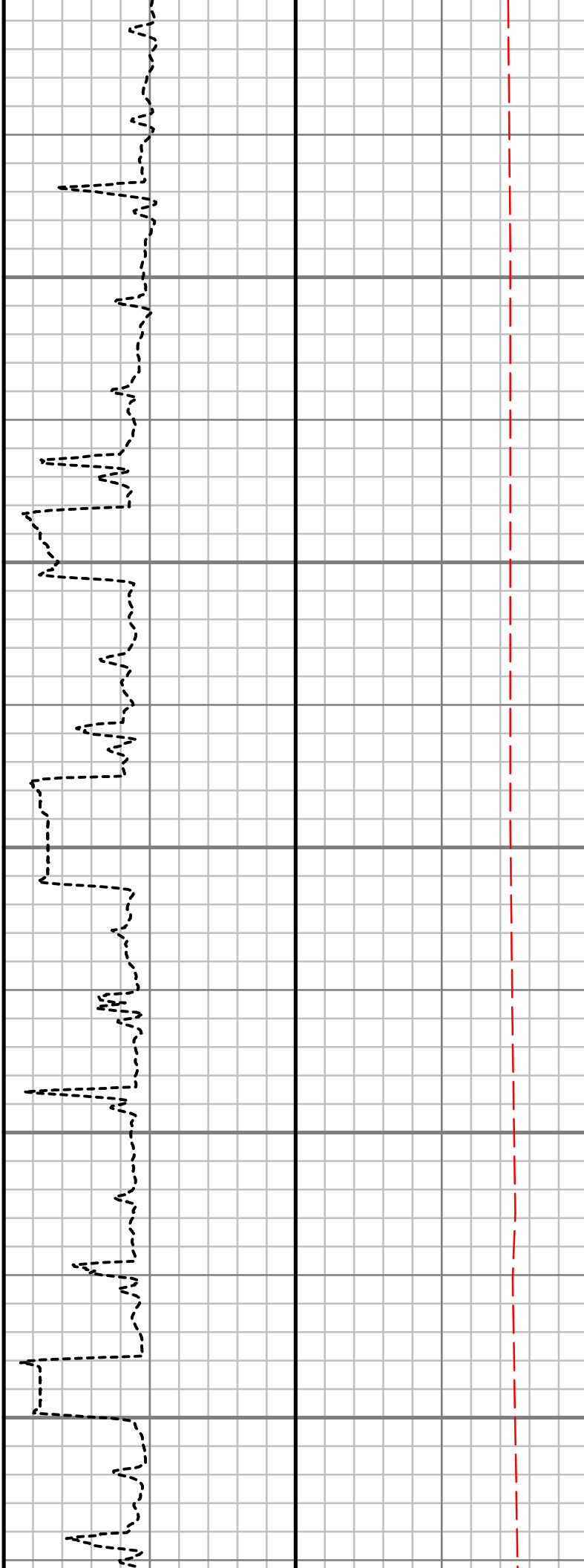
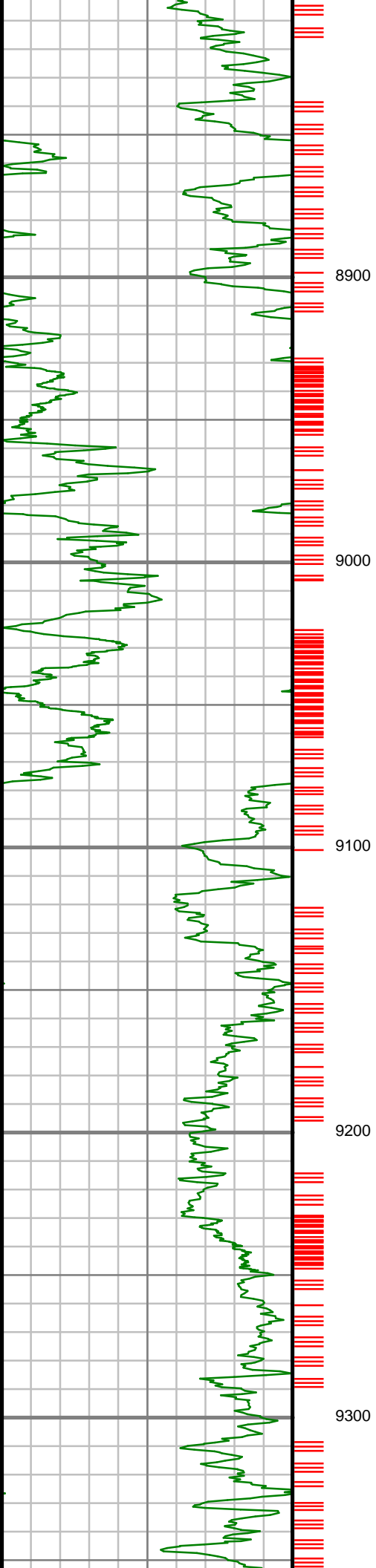




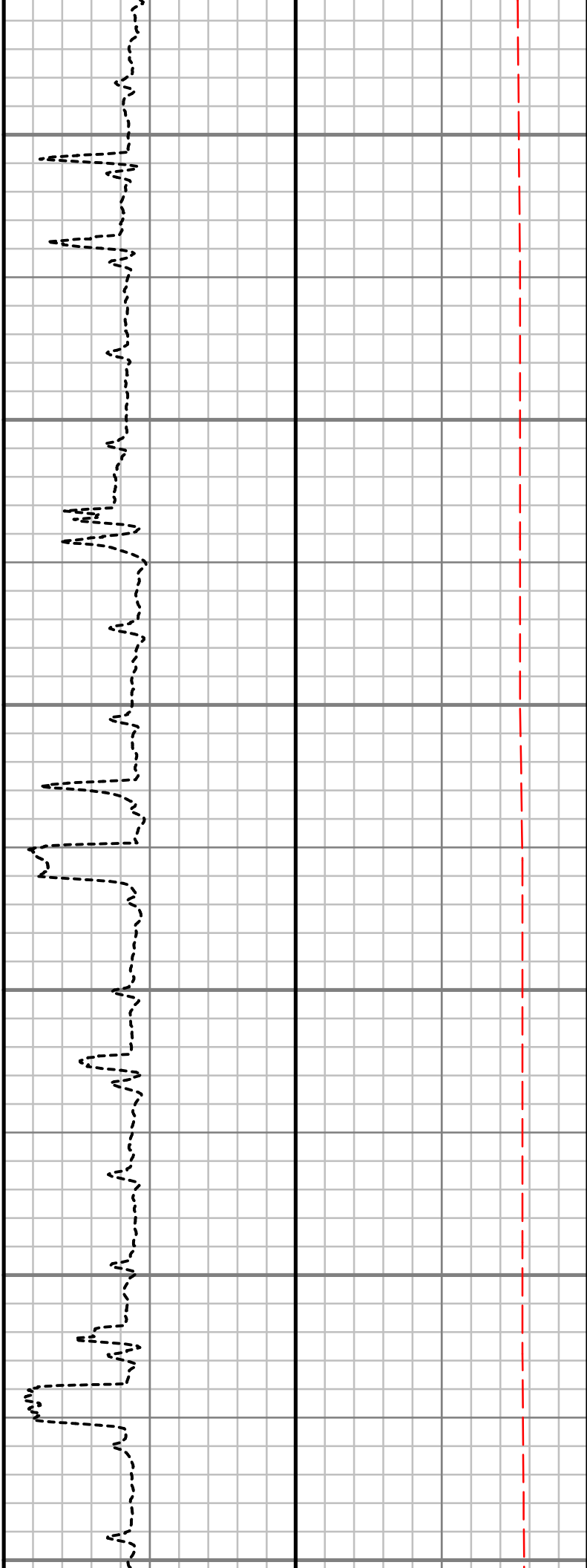
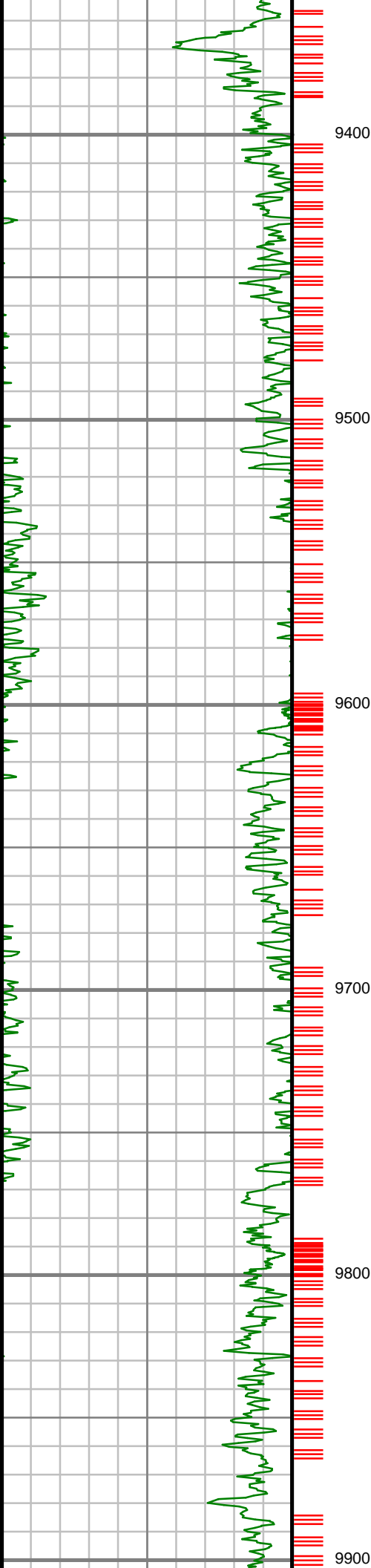








S: 91 MD: 8807.00 ft Inc: 90.47 deg Az: 270.86 deg TVD: 7018.69 ft
S: 92 MD: 8902.00 ft Inc: 92.66 deg Az: 270.94 deg TVD: 7016.10 ft
S: 93 MD: 8997.00 ft Inc: 92.28 deg Az: 273.06 deg TVD: 7012.01 ft
S: 94 MD: 9091.00 ft Inc: 90.03 deg Az: 275.11 deg TVD: 7010.11 ft
S: 95 MD: 9187.00 ft Inc: 88.99 deg Az: 277.34 deg TVD: 7010.93 ft
S: 96 MD: 9281.00 ft Inc: 89.23 deg Az: 276.63 deg TVD: 7012.39 ft



S: 97 MD: 9377.00 ft
Inc: 87.92 deg Az:
275.36 deg TVD:
7014.78 ft

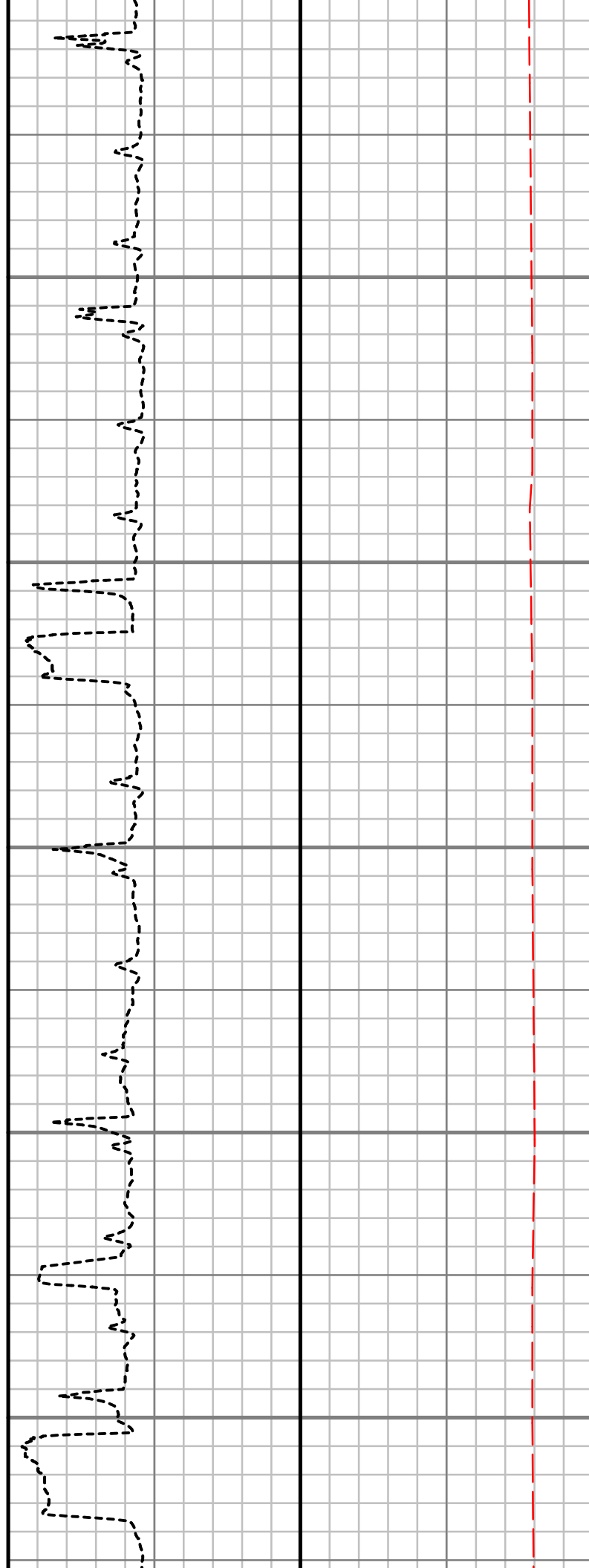
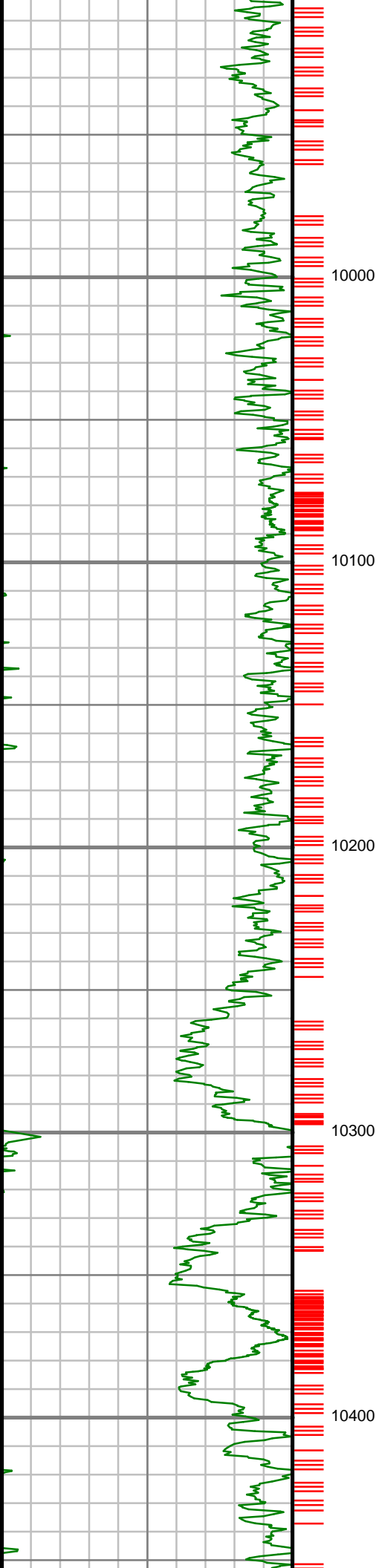
S: 98 MD: 9473.00 ft
Inc: 88.12 deg Az:
274.64 deg TVD:
7018.10 ft

S: 99 MD: 9568.00 ft
Inc: 88.46 deg Az:
274.54 deg TVD:
7020.94 ft

S: 100 MD: 9663.00 ft
Inc: 89.87 deg Az:
273.79 deg TVD:
7022.33 ft

S: 101 MD: 9759.00 ft
Inc: 89.03 deg Az:
272.83 deg TVD:
7023.26 ft

S: 102 MD: 9854.00 ft
Inc: 89.70 deg Az:
271.19 deg TVD:
7024.32 ft



S: 103 MD: 9949.00 ft
Inc: 89.43 deg Az:
271.83 deg TVD:
7025.04 ft

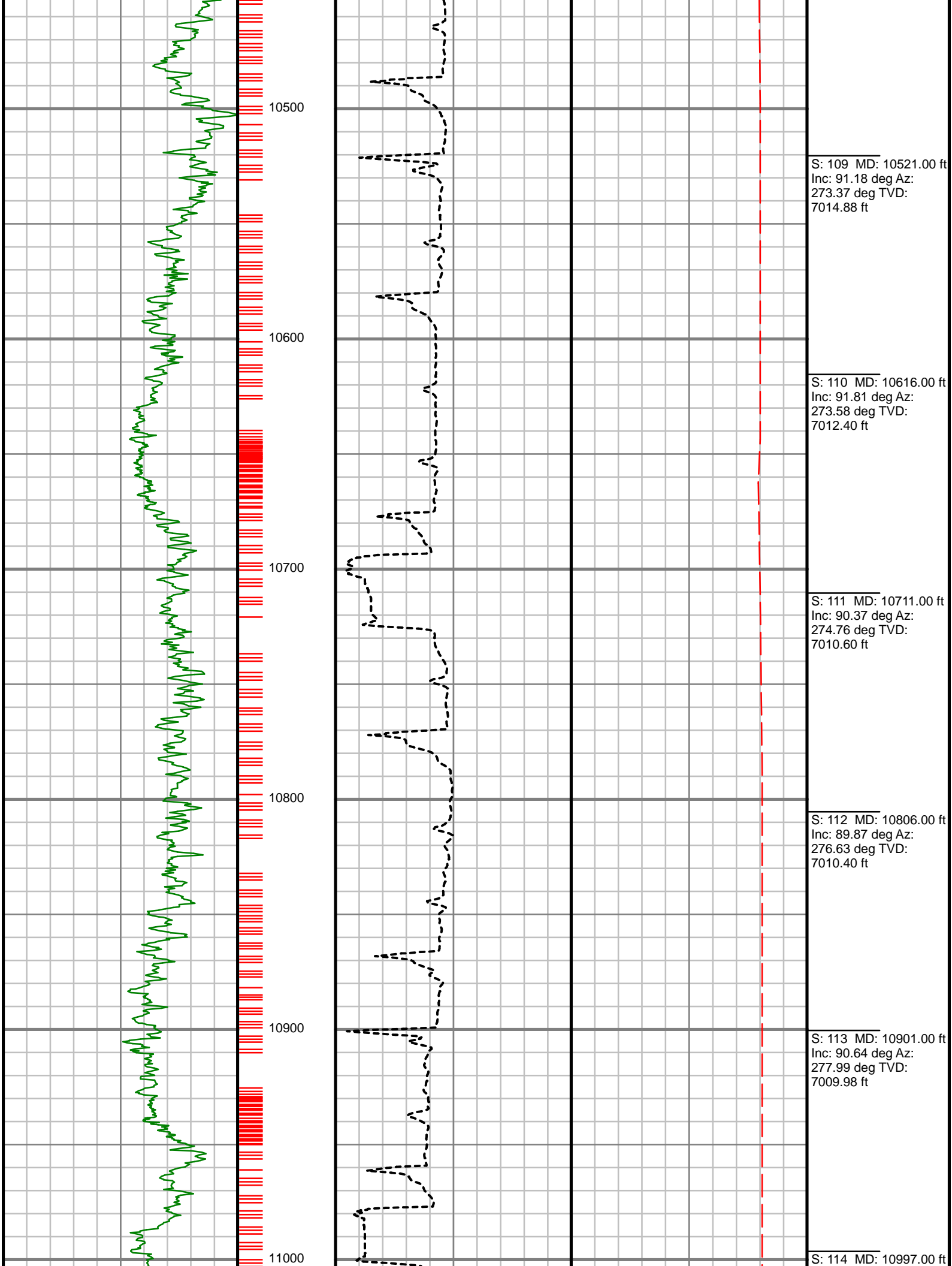
S: 104 MD: 10045.00 ft
Inc: 89.26 deg Az:
272.16 deg TVD:
7026.14 ft

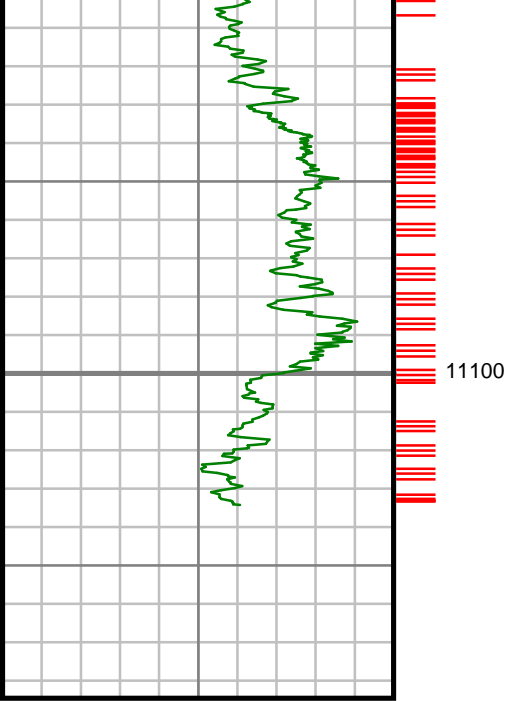
S: 105 MD: 10140.00 ft
Inc: 91.45 deg Az:
271.43 deg TVD:
7025.55 ft

S: 106 MD: 10236.00 ft
Inc: 91.58 deg Az:
270.74 deg TVD:
7023.01 ft

S: 107 MD: 10331.00 ft
Inc: 92.48 deg Az:
270.74 deg TVD:
7019.65 ft

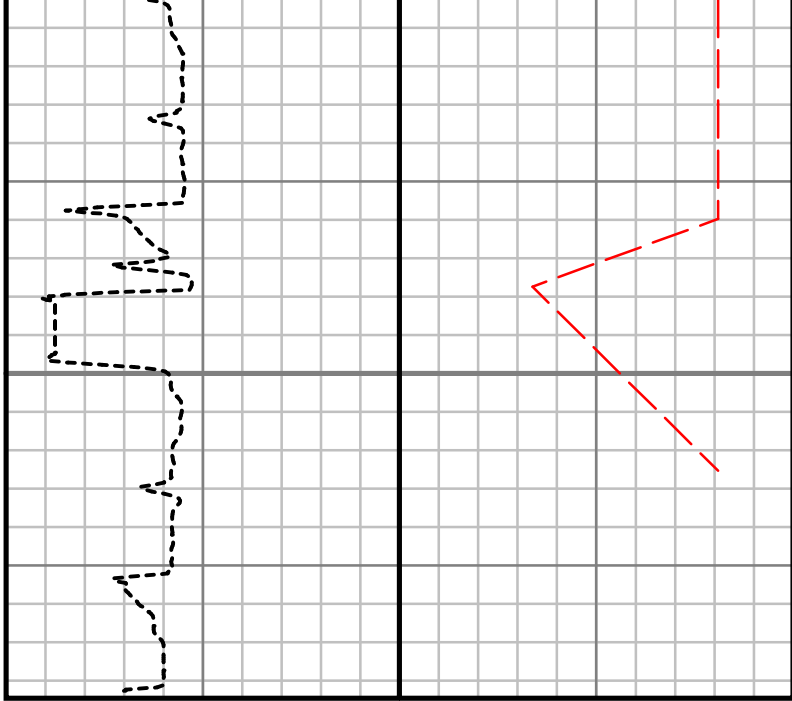
S: 108 MD: 10426.00 ft
Inc: 91.04 deg Az:
272.40 deg TVD:
7016.72 ft





Gamma Ray (GR)		
0	Unit = aapi	150

MEASURED DEPTH
1:600 (ft)



Rate of Penetration (ROP)		
0	Unit = ft/hr	1000

Tool Temperature (T-TEMP)		
0	Unit = °F	300

Comments

Inc: 89.90 deg Az:
277.46 deg TVD:
7009.53 ft

S: 115 MD: 11092.00 ft
Inc: 88.79 deg Az:
275.83 deg TVD:
7010.62 ft

S: 116 MD: 11123.00 ft
Inc: 89.08 deg Az:
275.50 deg TVD:
7011.20 ft

MWD Survey Report

Well Location	JANSSEN
Well Name	JANSSEN 10 PRODUCTION
Survey Date	11/24/2015
Latitude	40°30'9.734"N
Longitude	104°41'17.794"W
Btotal	52637 nT
Dip	67.05 deg
Magnetic Declination	8.49 deg
North Reference	True North
Grid Correction	None
Depth Reference	RKB (24.50 ft)
Calculation Method	Minimum Curvature
Section (VS) Ref	0.00N (ft), 0.00E (ft), 273.08Azim (deg)
Operator(s)	J. GREGORY, M. SMITH

Well Notes

MD ft	Inc deg	Azim deg	TVD ft	VS ft	+N/-S ft	+E/-W ft	DLS °/100ft
0.00	0.00	0.00	0.00	0.00	0.00	0.00	Invalid
204.00	1.01	173.94	203.99	-0.29	-1.79	0.19	0.50
296.00	1.34	190.79	295.97	-0.27	-3.65	0.07	0.52
388.00	1.59	189.24	387.94	0.01	-5.97	-0.33	0.28
480.00	1.52	158.06	479.91	-0.37	-8.36	-0.08	0.91
574.00	2.22	113.61	573.86	-2.60	-10.24	2.05	1.66
669.00	2.92	101.23	668.77	-6.72	-11.45	6.11	0.94
763.00	3.19	78.14	762.64	-11.62	-11.38	11.02	1.33
857.00	3.38	76.45	856.48	-16.80	-10.20	16.27	0.23
951.00	3.81	61.12	950.30	-22.10	-8.04	21.70	1.12
1046.00	4.41	44.14	1045.06	-27.18	-3.89	27.01	1.42
1140.00	4.71	46.55	1138.76	-32.21	1.36	32.33	0.38
1234.00	4.95	47.17	1232.43	-37.69	6.77	38.10	0.26
1330.00	5.13	49.52	1328.05	-43.68	12.37	44.41	0.29
1425.00	5.45	48.21	1422.65	-49.95	18.13	51.00	0.36
1586.00	6.68	53.58	1582.75	-62.60	28.79	64.24	0.84
1681.00	6.44	49.34	1677.12	-70.72	35.55	72.73	0.57
1775.00	5.56	51.18	1770.61	-77.92	41.84	80.28	0.96
1870.00	4.86	46.10	1865.22	-84.09	47.52	86.77	0.88
1965.00	5.30	64.33	1959.85	-90.69	52.21	93.63	1.75

MD ft	Inc deg	Azim deg	TVD ft	VS ft	+N/-S ft	+E/-W ft	DLS °/100ft
2059.00	4.88	65.14	2053.48	-98.03	55.78	101.18	0.46
2154.00	4.60	61.71	2148.15	-104.85	59.28	108.19	0.42
2249.00	6.05	67.78	2242.74	-112.63	62.98	116.18	1.64
2344.00	5.70	65.10	2337.24	-121.32	66.85	125.09	0.47
2439.00	5.11	63.90	2431.82	-129.18	70.70	133.17	0.63
2535.00	5.30	86.30	2527.43	-137.31	72.87	141.43	2.11
2629.00	5.43	90.91	2621.02	-146.07	73.08	150.21	0.48
2723.00	4.63	99.82	2714.66	-154.28	72.36	158.40	1.18
2818.00	5.98	82.43	2809.26	-162.96	72.36	167.09	2.20
2913.00	6.58	82.51	2903.69	-173.18	73.72	177.39	0.63
3009.00	6.49	80.61	2999.06	-183.88	75.32	188.20	0.24
3103.00	5.73	79.20	3092.53	-193.63	77.07	198.06	0.83
3198.00	5.40	78.56	3187.08	-202.56	78.85	207.10	0.36
3294.00	4.65	83.17	3282.71	-210.77	80.20	215.39	0.88
3389.00	3.48	100.89	3377.47	-217.42	80.12	222.05	1.80
3484.00	3.08	108.66	3472.32	-222.73	78.76	227.29	0.63
3579.00	4.56	77.20	3567.11	-228.82	78.78	233.39	2.65
3674.00	4.55	83.41	3661.81	-236.17	80.05	240.82	0.52
3770.00	5.48	74.00	3757.45	-244.26	81.75	249.01	1.29
3865.00	7.47	60.74	3851.84	-253.76	86.02	258.76	2.60

MD ft	Inc deg	Azim deg	TVD ft	VS ft	+N/-S ft	+E/-W ft	DLS °/100ft
3960.00	7.27	61.76	3946.06	-264.11	91.88	269.44	0.25
4056.00	7.65	62.77	4041.24	-274.82	97.68	280.47	0.42
4150.00	7.08	63.40	4134.47	-285.25	103.14	291.21	0.61
4245.00	6.20	63.52	4228.83	-294.80	108.04	301.04	0.93
4341.00	5.61	65.14	4324.32	-303.45	112.33	309.93	0.64
4437.00	4.89	67.43	4419.92	-311.28	115.87	317.96	0.78
4532.00	4.45	66.22	4514.60	-318.21	118.91	325.07	0.48
4626.00	4.07	69.66	4608.34	-324.53	121.54	331.54	0.48
4721.00	3.53	68.32	4703.13	-330.28	123.79	337.42	0.58
4816.00	3.16	66.98	4797.97	-335.29	125.89	342.54	0.40
4910.00	2.56	68.37	4891.85	-339.52	127.68	346.88	0.64
5005.00	1.89	73.29	4986.78	-342.93	128.92	350.36	0.73
5100.00	1.84	70.99	5081.73	-345.81	129.86	353.30	0.10
5195.00	1.38	86.84	5176.70	-348.36	130.42	355.88	0.67
5290.00	1.26	64.31	5271.67	-350.41	130.94	357.96	0.56
5385.00	1.25	55.81	5366.65	-352.15	131.97	359.76	0.20
5481.00	1.38	44.11	5462.62	-353.74	133.39	361.43	0.31
5576.00	1.75	30.11	5557.59	-355.15	135.47	362.95	0.56
5672.00	0.99	32.97	5653.56	-356.23	137.43	364.14	0.80
5767.00	0.63	55.13	5748.55	-357.05	138.42	365.02	0.49

MD ft	Inc deg	Azim deg	TVD ft	VS ft	+N/-S ft	+E/-W ft	DLS °/100ft
5862.00	0.38	101.10	5843.55	-357.77	138.66	365.75	0.48
5957.00	0.12	131.18	5938.55	-358.16	138.53	366.13	0.29
6051.00	0.17	145.94	6032.55	-358.32	138.35	366.29	0.06
6146.00	0.27	196.76	6127.54	-358.35	138.02	366.30	0.22
6241.00	0.13	237.83	6222.54	-358.21	137.75	366.14	0.20
6337.00	0.34	351.80	6318.54	-358.06	137.96	366.00	0.43
6432.00	4.61	283.53	6413.44	-354.25	139.13	362.25	4.73
6528.00	12.05	276.77	6508.36	-340.44	141.22	348.53	7.81
6623.00	15.53	266.57	6600.62	-317.90	141.63	325.98	4.45
6719.00	21.37	275.94	6691.67	-287.63	142.67	295.72	6.80
6814.00	28.76	276.38	6777.66	-247.47	147.01	255.74	7.79
6909.00	37.94	277.93	6856.93	-195.44	153.59	203.99	9.70
7005.00	52.39	277.21	6924.44	-127.75	162.48	136.68	15.07
7100.00	67.44	268.66	6971.99	-45.90	166.21	54.91	17.63
7195.00	83.78	269.38	6995.52	45.58	164.66	-36.79	17.22
7291.00	87.34	269.01	7002.95	141.06	163.32	-132.47	3.73
7386.00	88.99	268.69	7005.98	235.75	161.41	-227.40	1.77
7481.00	90.84	270.17	7006.12	330.55	160.47	-322.39	2.49
7576.00	93.10	269.92	7002.86	425.35	160.54	-417.33	2.39
7670.00	93.59	271.73	6997.38	519.12	161.89	-511.16	1.99

MD ft	Inc deg	Azim deg	TVD ft	VS ft	+N/-S ft	+E/-W ft	DLS °/100ft
7765.00	92.75	275.25	6992.13	613.95	167.66	-605.82	3.80
7860.00	90.77	275.49	6989.21	708.83	176.54	-700.35	2.10
7955.00	87.62	274.60	6990.54	803.75	184.89	-794.96	3.45
8050.00	87.14	275.25	6994.89	898.60	193.04	-889.51	0.84
8145.00	87.71	275.77	6999.15	993.42	202.14	-983.98	0.81
8240.00	88.86	277.29	7001.99	1088.20	212.94	-1078.32	2.01
8334.00	88.46	274.97	7004.19	1182.03	222.98	-1171.75	2.50
8428.00	87.68	272.07	7007.36	1275.97	228.75	-1265.50	3.19
8523.00	87.45	271.57	7011.39	1370.86	231.77	-1360.37	0.58
8617.00	87.75	270.86	7015.33	1464.72	233.76	-1454.27	0.82
8712.00	88.86	271.15	7018.14	1559.62	235.43	-1549.21	1.21
8807.00	90.47	270.86	7018.69	1654.55	237.09	-1644.19	1.72
8902.00	92.66	270.94	7016.10	1749.44	238.58	-1739.14	2.30
8997.00	92.28	273.06	7012.01	1844.33	241.88	-1833.98	2.26
9091.00	90.03	275.11	7010.11	1938.29	248.57	-1927.72	3.24
9187.00	88.99	277.34	7010.93	2034.13	258.97	-2023.14	2.56
9281.00	89.23	276.63	7012.39	2127.90	270.40	-2116.43	0.79
9377.00	87.92	275.36	7014.78	2223.74	280.43	-2211.87	1.90
9473.00	88.12	274.64	7018.10	2319.63	288.79	-2307.45	0.78
9568.00	88.46	274.54	7020.94	2414.56	296.40	-2402.10	0.37

MD	Inc	Azim	TVD	VS	+N/-S	+E/-W	DLS
ft	deg	deg	ft	ft	ft	ft	°/100ft
9663.00	89.87	273.79	7022.33	2509.52	303.30	-2496.84	1.68
9759.00	89.03	272.83	7023.26	2605.52	308.84	-2592.67	1.33
9854.00	89.70	271.19	7024.32	2700.49	312.17	-2687.60	1.87
9949.00	89.43	271.83	7025.04	2795.45	314.67	-2782.56	0.74
10045.00	89.26	272.16	7026.14	2891.43	318.01	-2878.50	0.38
10140.00	91.45	271.43	7025.55	2986.40	320.99	-2973.45	2.42
10236.00	91.58	270.74	7023.01	3082.30	322.81	-3069.39	0.73
10331.00	92.48	270.74	7019.65	3177.16	324.04	-3164.33	0.95
10426.00	91.04	272.40	7016.72	3272.08	326.64	-3259.24	2.31
10521.00	91.18	273.37	7014.88	3367.06	331.42	-3354.10	1.04
10616.00	91.81	273.58	7012.40	3462.03	337.18	-3448.89	0.70
10711.00	90.37	274.76	7010.60	3556.99	344.09	-3543.62	1.96
10806.00	89.87	276.63	7010.40	3651.88	353.51	-3638.15	2.05
10901.00	90.64	277.99	7009.98	3746.62	365.60	-3732.37	1.65
10997.00	89.90	277.46	7009.53	3842.30	378.51	-3827.49	0.95
11092.00	88.79	275.83	7010.62	3937.11	389.51	-3921.85	2.08
11123.00	89.08	275.50	7011.20	3968.07	392.57	-3952.69	1.41

MD ft	Inc deg	Azim deg	TVD ft	VS ft	+N/-S ft	+E/-W ft	DLS °/100ft

2" = 100' FEET MD