



Empirica

Scale: 5" / 100'
Measured Depth Log

Well Name Janssen #10

Location Sec.8-T06N-R65W

State Colorado

Country USA

API Number 05-123-42358-00

Geographic Region DJ Basin

Spud Date 11/26/2015

Surface Coordinates SHL: 2371' FNL, 2396' FWL Sec. 8 T6N R65W

Lat: 40 30' 9.734 N

Long: 104 41' 17.794 W

Bottom Hole Coordinates PBHL:

Lat: 40 30'13.694 N

Long: 104 42'17.064 W

Ground Elevation 4,777'

K.B. Elevation 4,801.5'

Logged Interval 6,500' To 11,183'

Total Depth 11,183'

Formation Niobrara B Chalk

Type of Drilling Fluid Oil Based - invert

Operator

Company Extraction Oil & Gas

Address 1888 Sherman St., Suite 200
Denver, CO 80203

Geologist

Name Vivian Spiess / Jared Rouse

Company Extraction Oil & Gas

Address 1888 Sherman St., Suite 200
Denver, CO 80203



Other

Equipment ML-113

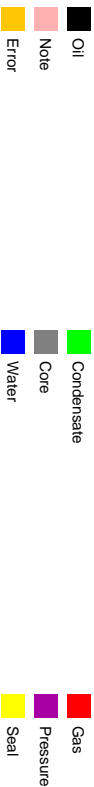
Comments Start: 11-26-15
TD: 11-28-15

Services Provided 2-man Logging
On Site Geosteering

Logger Names Dominic Pitre / Nicholas V

Address Empirica, LLC.
6360 W Sam Houston Pk
Suite 100
Houston, TX 77041

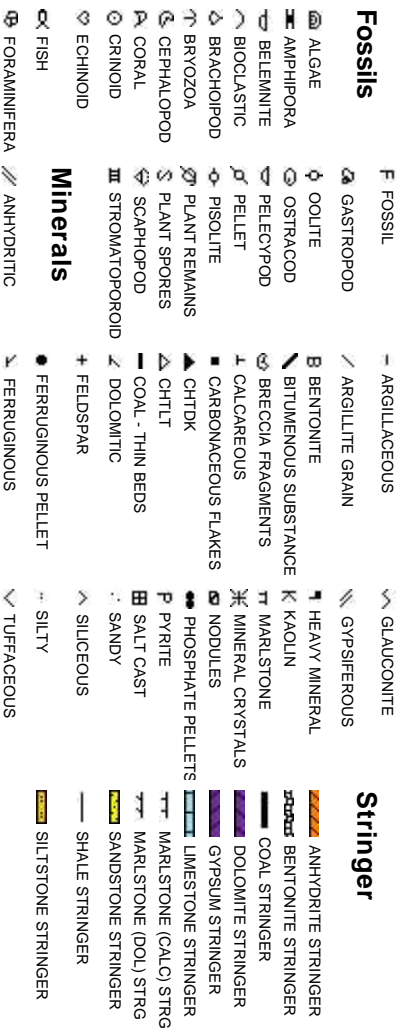
Zone Color Coding



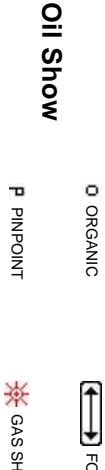
Rock Types



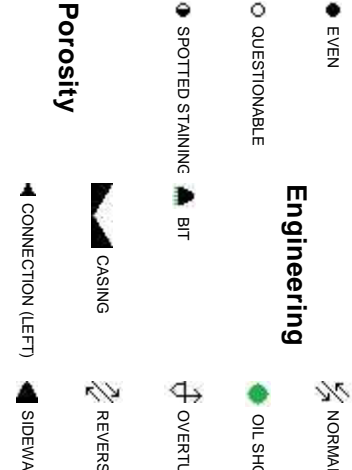
Accessories



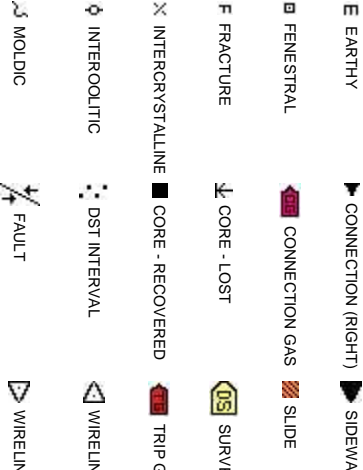
Other Sy



Engineering



Porosity



Symbols

FORMATION TOP L LITHOGRAPHIC

Rounding

LOW MX MICROXLN

MIN DEPTH AN ANGULAR MS MUDSTONE

FL FAULT R ROUNDED PS PACKSTONE

DW B SUBANG WS WACKESTONE

TURNED STRATA N SUBRND

Sorting

SE FAULT

Textures

LL CORE (LEFT) M MODERATE

LL CORE (RIGHT) BS BOUNDSTONE P POOR

C CHALKY W WELL

EY CX CRYPTOXLN

SAS E EARTHY

IE TESTED - LEFT FX FINELYXLN

IE TESTED - RT GS GRAINSTONE

ROP

ROP

GAMMA

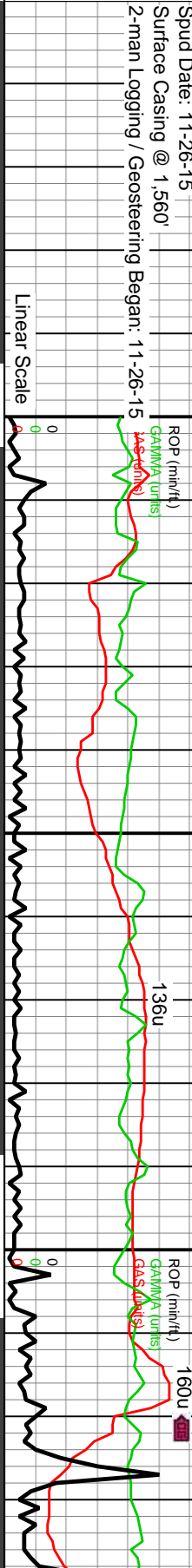
GAS

Weld County, Colorado

Spud Date: 11-26-15

Surface Casing @ 1,560'

2-man Logging / Geosteering Began: 11-26-15



Slide/Rotate

Depth Labels

6,460 6,470 6,480 6,490 6,500 6,510 6,520 6,530 6,540 6,550 6,560 6,570 6,580 6,590 6,600 6,610 6,620 6,630

Depths Correspond to Driller's Pipe Tally

100 units = 10% methane

Total Gas & Chromatograph

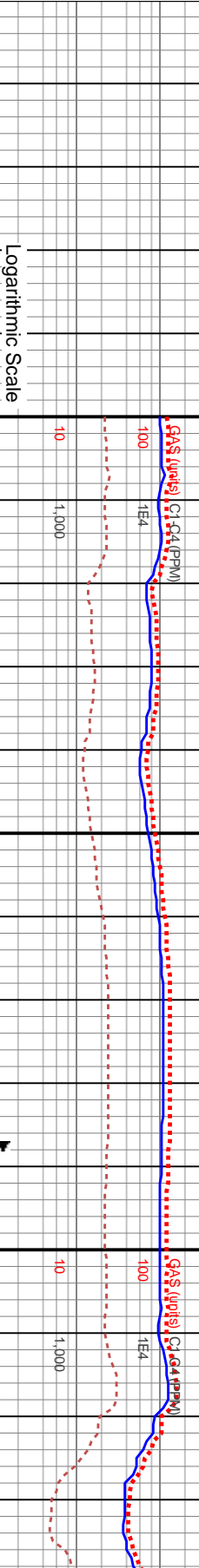
GAS

C1

C2

C3

C4



Logarithmic Scale

WOB: 30Klbs

Rotary: 25RPM

Strokes: 240SPM

Pump Rate: 688GPM

MD: 6,528'

TVD: 6,508.36'

Inclination: 12.05°

Azimuth: 276.77°

VS: -340.44'

Well Bore

TVD

TVD (ft)

6500-6560 SS (80%): off wh-v lt gy-occ lt gy brn, occ dk gy siltst frag incl, vf p-mod strd sd grs grdg to silt, med frm-frm sli fri mtx-gr sup cls cons wi pred arg cmt, occ dolc & silc cmt, pred non calc, sl calc ip, tr vf pyr, grdg to 20% SLTST: lt gy-gy-dk gy ang-pty ctigs, silc, wi tr-rr vf pyr strg ip, non calc

8000

6560-6620 SS (60%): off wh-v lt gy-occ lt gy brn, occ dk gy siltst frag incl, vf p-mod strd sd grs grdg to silt, med frm-frm sli fri mtx-gr sup cls cons wi pred arg cmt, occ dolc & silc cmt, tr vf pyr, pred non calc, sl calc ip, grdg to 20% SLTST: lt gy-gy-dk gy ang-pty brit silc ctigs, tr-rr vf pyr strg ip, non calc, 20% SLTY SH: lt gy-lt gy brn, med frm-frm sl hydrated ctigs, mod fls blkty ctigs, non calc-sl calc ip

8000

MD: 6,623'

TVD: 6,600.62'

Inclination: 15.53°

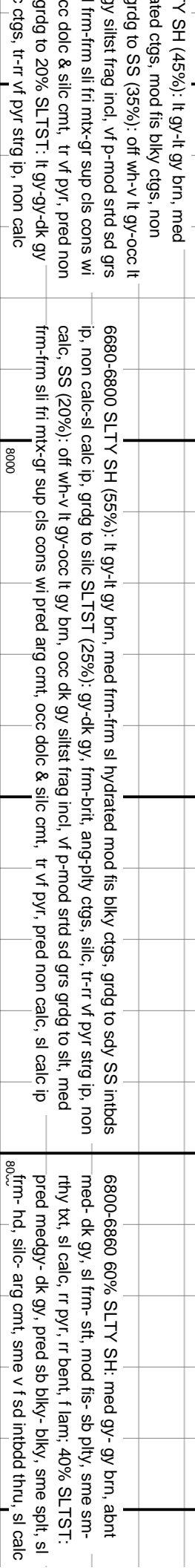
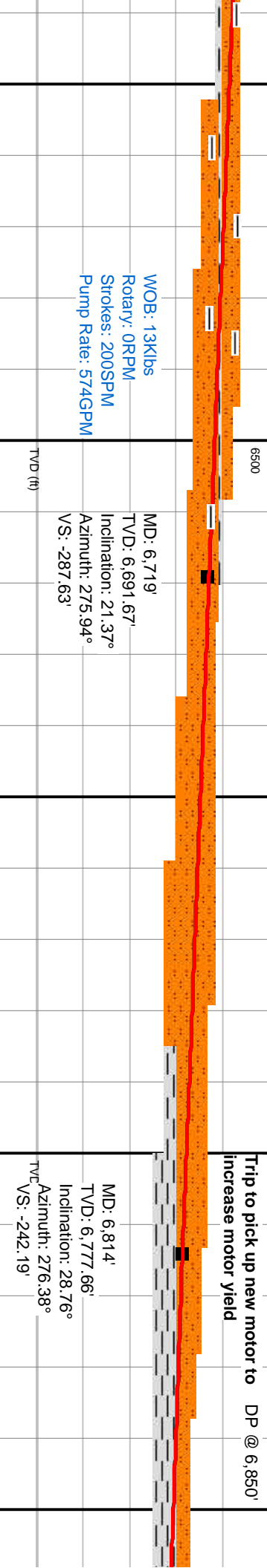
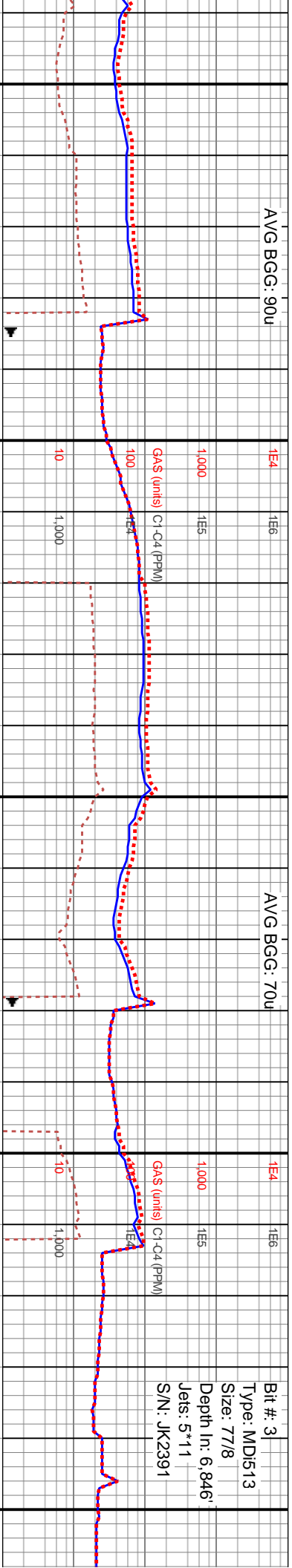
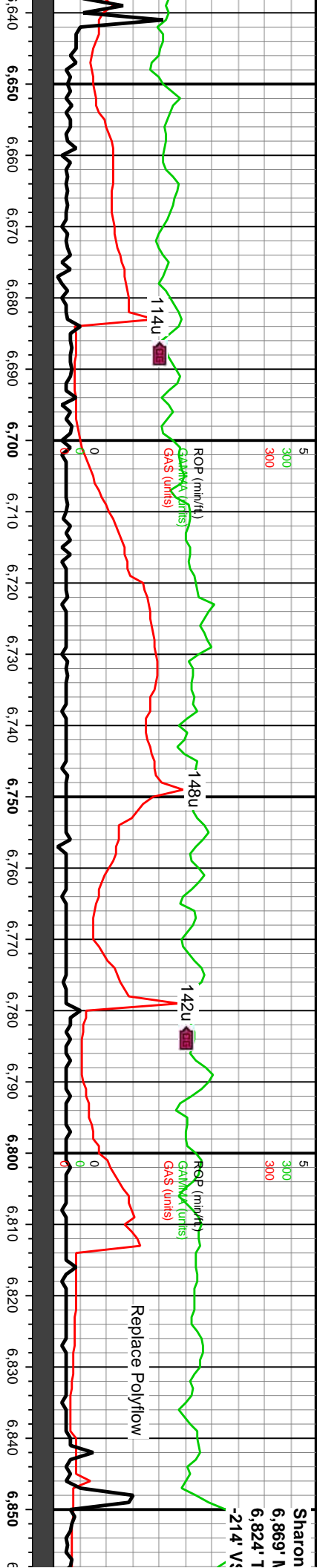
Azimuth: 266.57°

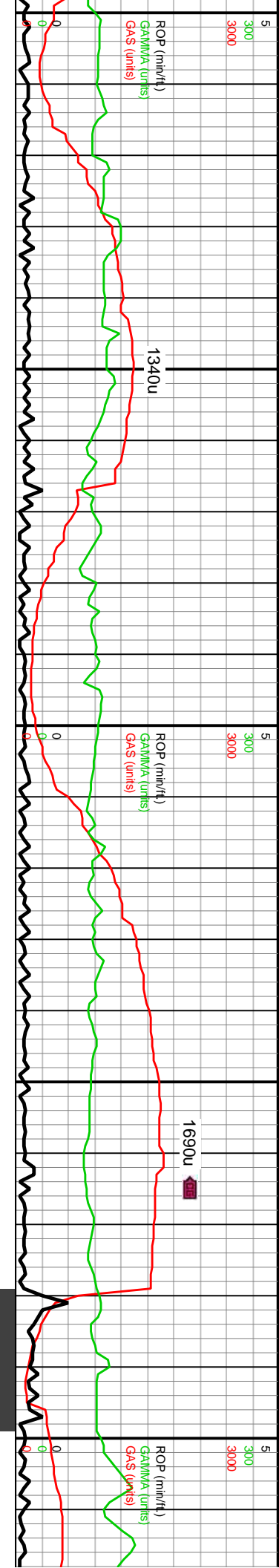
VS: -317.9'

6620-6680 SLT

Images

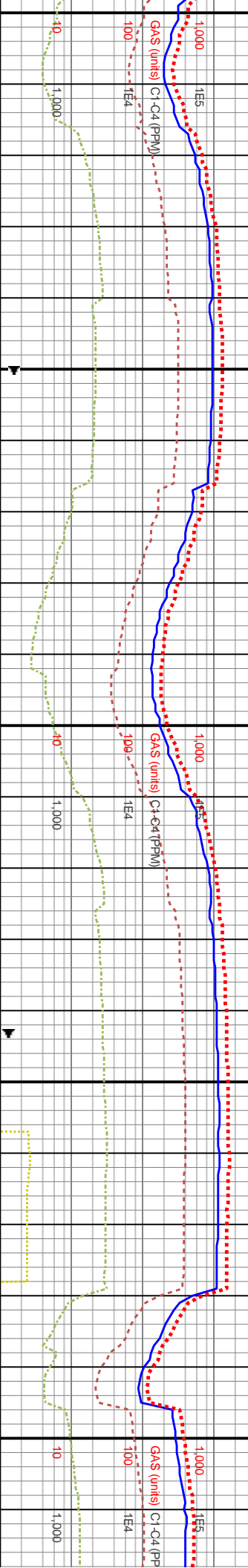






7,300 7,310 7,320 7,330 7,340 7,350 7,360 7,370 7,380 7,390 7,400 7,410 7,420 7,430 7,440 7,450 7,460 7,470 7,480 7,490 7,500 7,510

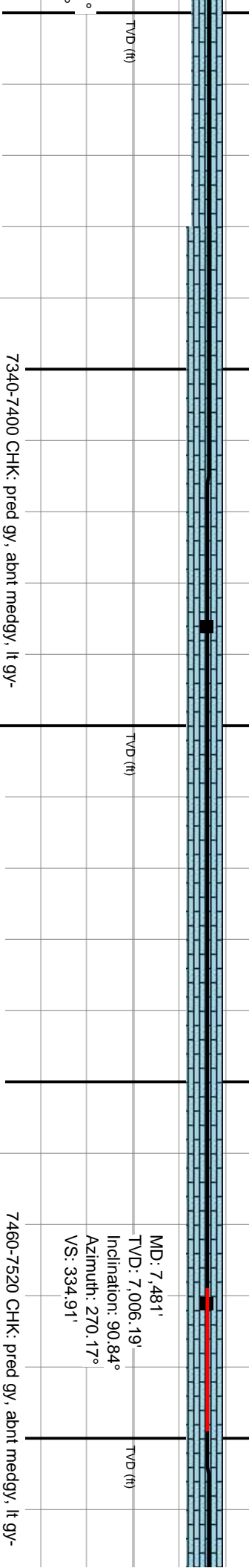
AVG BGG: 690u



6500

MD: 7,386'
TVD: 7,006.05'
Inclination: 88.99°
Azimuth: 268.69°
VS: 240.36'

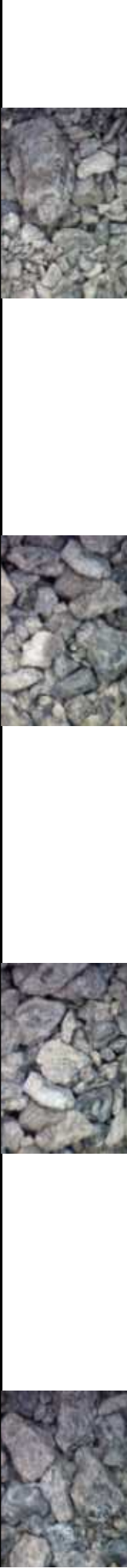
AVG BGG: 620u



6500

WOB: 38Klbs
Rotary: 50RPM
Strokes: 239SPM
Pump Rate: 688GPM

AVG BGG: 380u



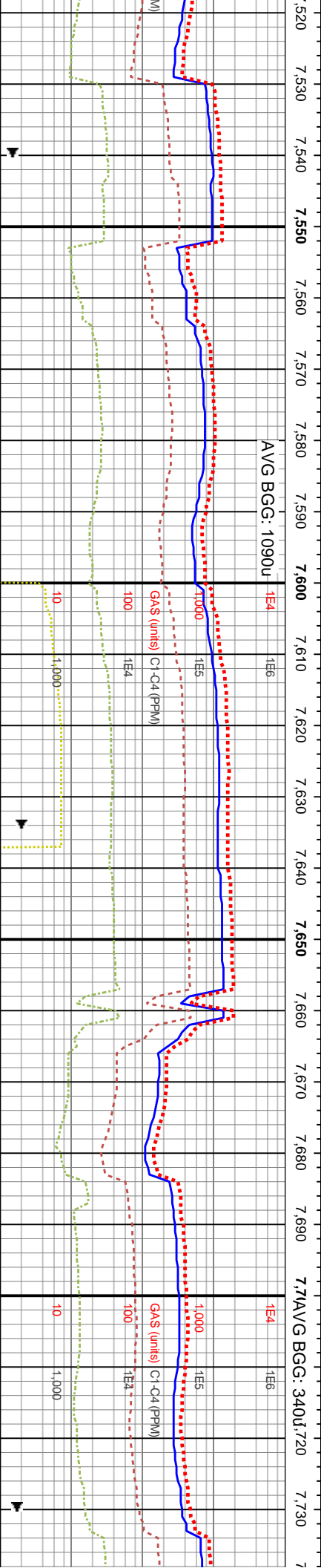
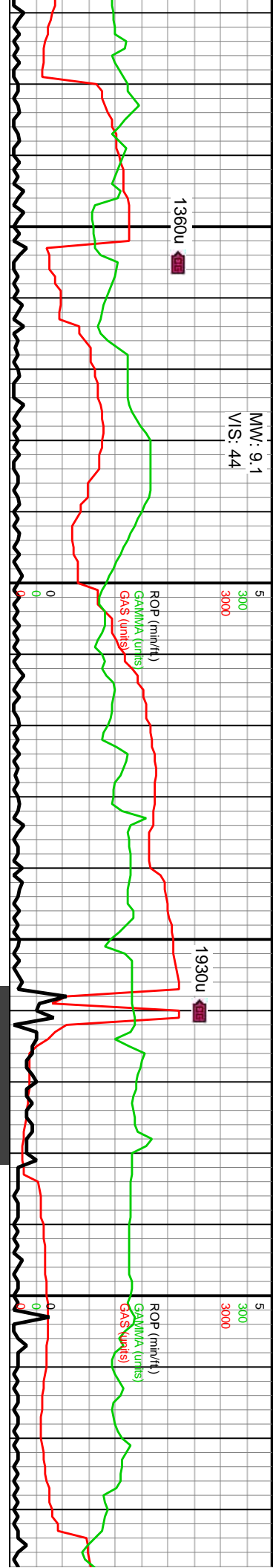
7340-7400 CHK: pred gy- med gy, lt gy- offwht mot thru, sme brn mot, frm- hd, pred blk- sb blk, occ spl, rthy- chky txt thru, occ sm txt, ~10% dk mry intbds, mod cal incl, tr cal- frac fl cal

7400-7460 CHK: pred gy, abnt medgy, lt gy- offwht mot thru, sme brn mot, frm- hd, pred blk- sb blk, occ spl, rthy- chky txt thru, occ sm txt, ~10% dk mry intbds, mod cal incl, tr cal- frac fl cal

7460-7520 CHK: pred gy, abnt medgy, lt gy- offwht mot thru, sme brn mot, frm- hd, pred blk- sb blk, occ spl, rthy- chky txt thru, occ sm txt, sme dk mry intbds, mod cal incl, tr cal- lse cal

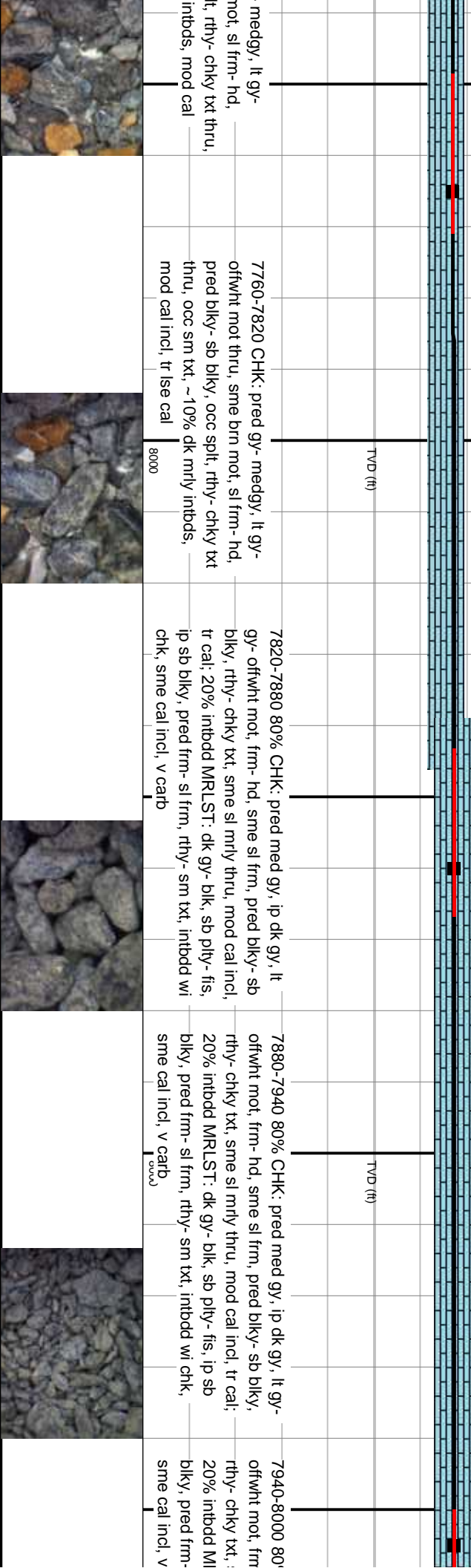
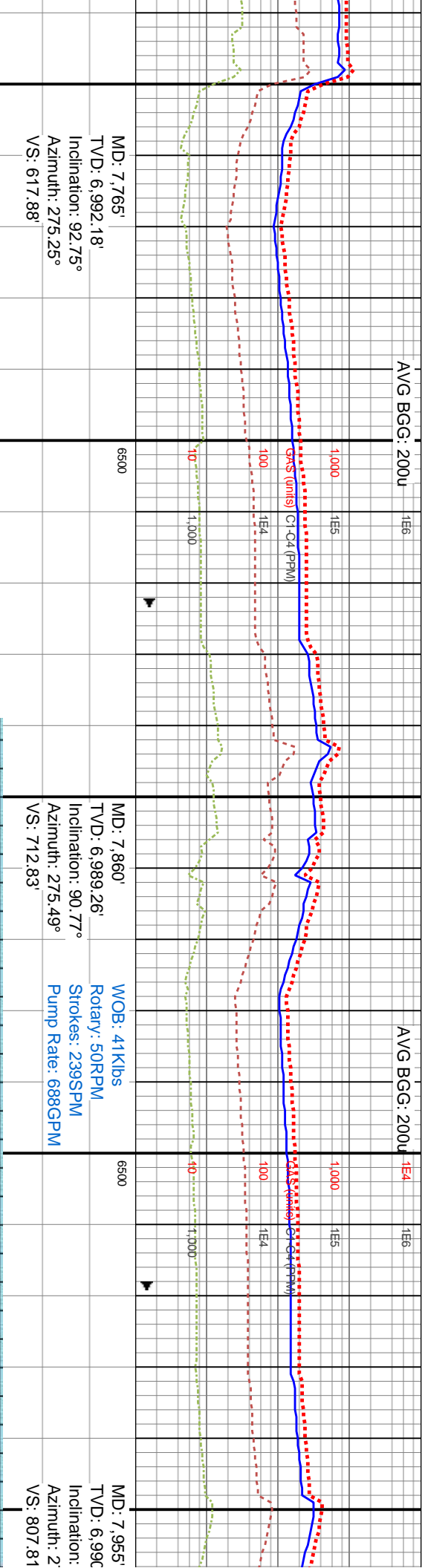
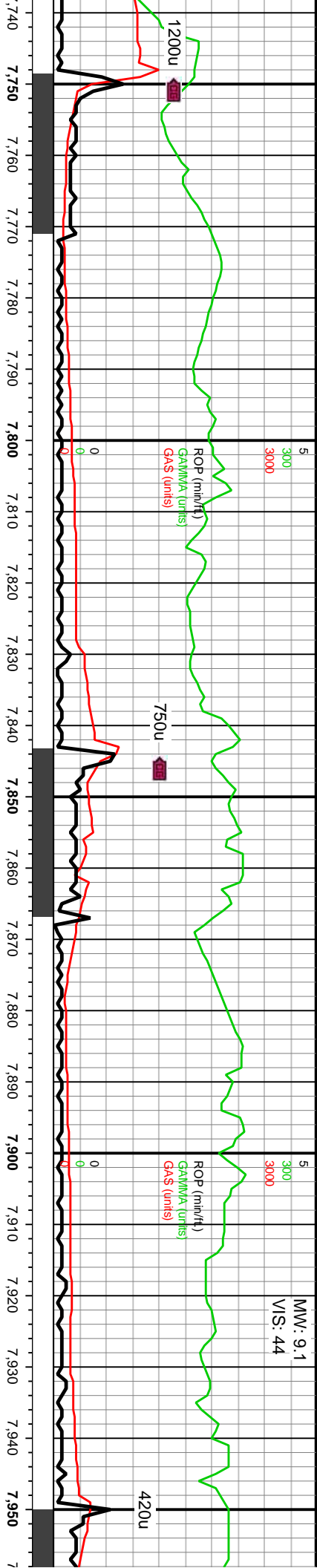
MD: 7,481'
TVD: 7,006.19'
Inclination: 90.84°
Azimuth: 270.17°
VS: 334.91'

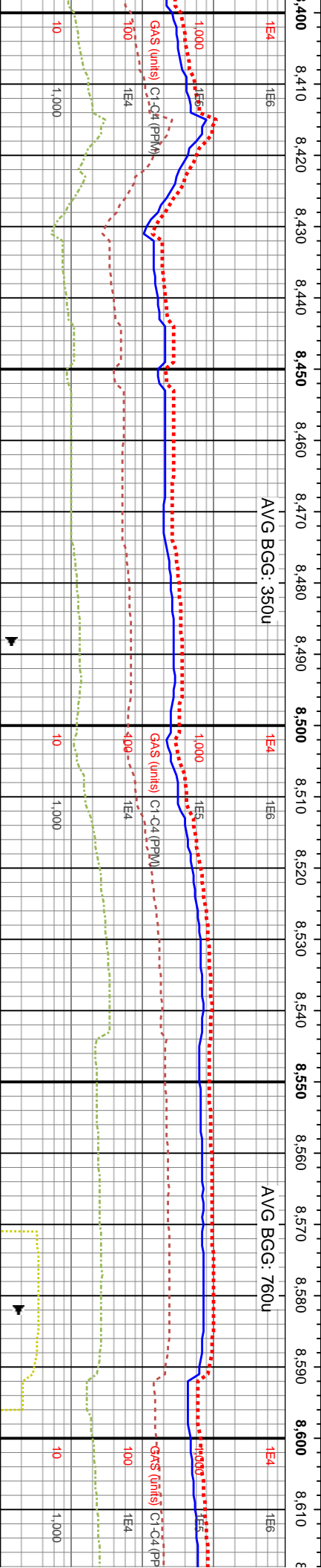
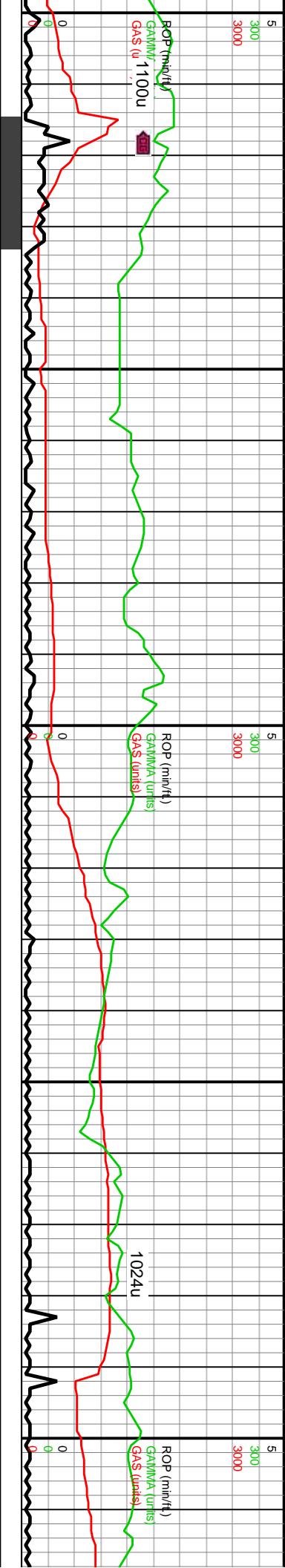
8000



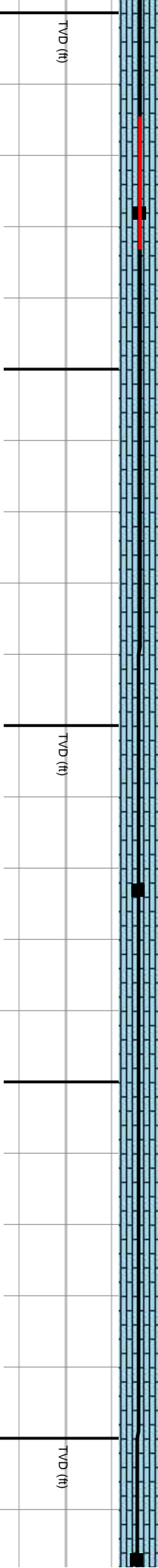
7520-7580 CHK: pred gy, abnt medgy, lt gy- offwnt mot thru, sme brn mot, frm- hd, pred blk- sb blk, occ splt, rthy- chky txt thru, occ sm txt, sme dk mrlly intbds, mod cal incl, tr frac fl cal- lse cal	MD: 7,576' TVD: 7,002.92' Inclination: 93.1° Azimuth: 269.92° VS: 429.49'	6500	MD: 7,670' TVD: 6,997.44' Inclination: 93.59° Azimuth: 271.73° VS: 523.08'	6500	7700-7760 CHK: pred gy- offwnt mot thru, sme brn mot, frm- hd, pred blk- sb blk, occ splt, rthy- chky txt thru, occ sm txt, ~10% dk mrlly intbds, mod cal incl, tr lse cal
	TVD (ft)		TVD (ft)		





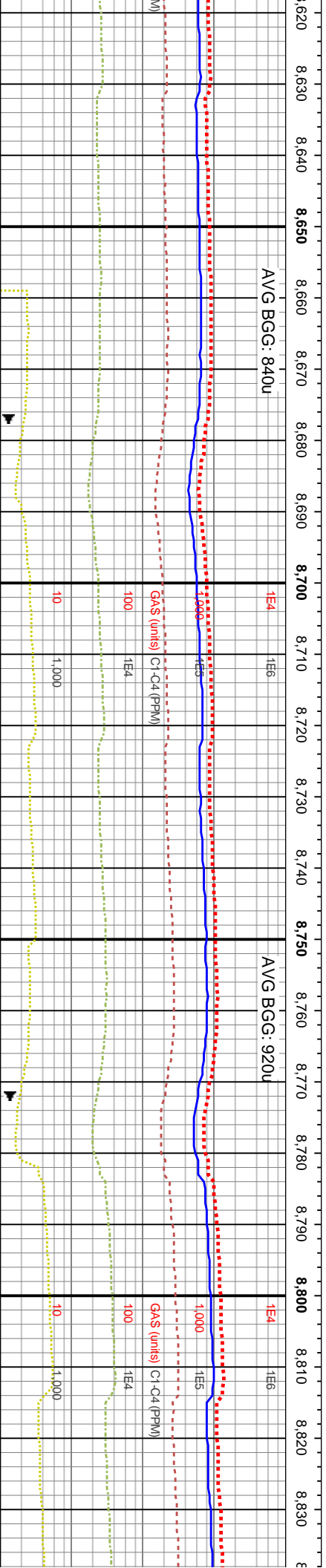
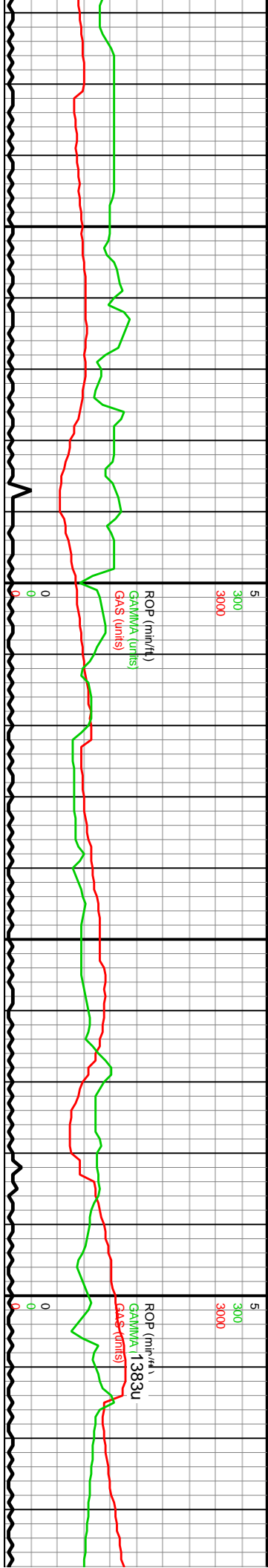


MD: 8,428' TVD: 7,007.42' Inclination: 87.68° Azimuth: 272.07° VS: 1,280.38'	WOB: 40Klbs Rotary: 50RPM Strokes: 239SPM Pump Rate: 688GPM	MD: 8,523' TVD: 7,011.39' Inclination: 87.45° Azimuth: 271.57° VS: 1,370.86'
--	--	--



8420-8480 CHK (60%): pred lt gy-gy, frm, l-mod fis sb ang-sb rd v arg LS ctgs, com u f-med wh chky incl, rr thn wh lamn, tr vf pyr, mod-hi calc wi cin HCL rxn, MRLST (40%): gy-dk gy-blk, dk wi OBM strn ip, frm, brt, l fis sb rd-occ sb ang ctgs, mot wi brn-thn mrlly incl ip, rr vf pyr, sl stly-sm tex, mod calc wi brn resd	8480-8540 CHK (75%): lt gy-gy, frm, l-mod fis sb ang-sb rd v arg LS ctgs, com u f-med wh chky incl, rr thn wh lamn, tr vf pyr, rr c free chk, tr fos frags, mod-hi calc wi cin HCL rxn, MRLST (25%): gy-dk gy-blk, dk wi OBM strn ip, frm, brt, l fis sb rd-occ sb ang ctgs, mot wi brn-thn mrlly incl ip, occ-rr vf pyr & vf pyr strg, sl stly-sm tex, mod calc wi brn resd	8540-8600 CHK (85%): lt gy-gy, frm, l-mod fis sb ang-sb rd v arg LS ctgs, com u f-med wh chky incl, rr thn wh lamn, tr vf pyr, rr c free chk, tr fos frags, mod-hi calc wi cin HCL rxn, MRLST (15%): gy-dk gy-blk, dk wi OBM strn ip, frm, brt, l fis sb rd-occ sb ang ctgs, mot wi brn-thn mrlly incl ip, occ-rr vf pyr & vf pyr strg, sl stly-sm tex, mod calc wi brn resd	8600-8720 CHK (90%): ang-sb rd ctgs dk wi OBM strn ip, frm, brt, l fis sb rd-occ sb ang ctgs, mot wi brn-thn mrlly incl ip, occ-rr vf pyr & vf pyr strg, sl stly-sm tex, mod calc wi brn resd
--	--	--	---





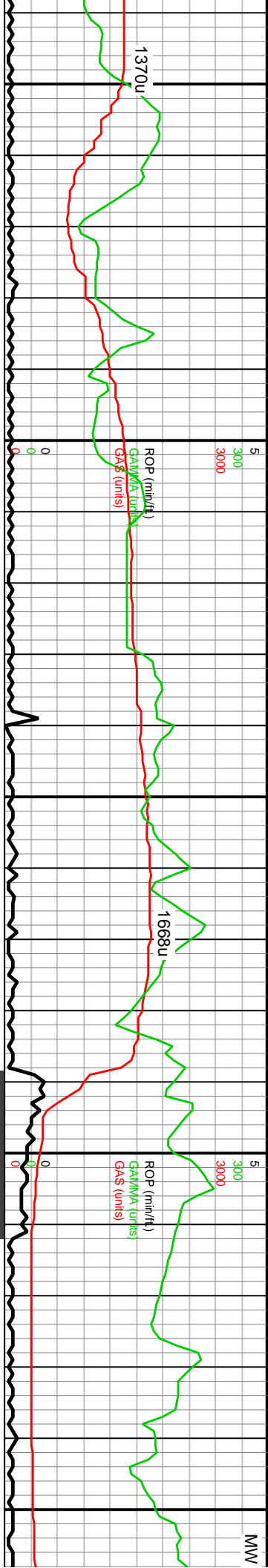
WOB: 39Klbs
Rotary: 60RPM
Strokes: 240SPM
Pump Rate: 688GPM

MD: 8,712'
TVD: 7,018.14'
Inclination: 88.86°
Azimuth: 271.15°
VS: 1,559.62'

MD: 8,807'
TVD: 7,018.69'
Inclination: 90.47°
Azimuth: 270.86°
VS: 1,654.55'

8720-8780 CHK (85%): pred lt gy-gy v arg LS wi thn wh chky lamn & vf-f mot chk incl, frm, l-mod fis sb ang-sb rd ctgs, tr vf pyr, rr c free chk, tr fos frags, mod-hi calc wi cin HCL rxn, MRLST (15%): gy-dk gy-blk, dk wi OBM sin ip, frm, brt, l fis sb rd-rd occ sb ang ctgs, mot wi brn-th mrlly incl ip, occ-rr vf pyr & vf pyr strg, sl silty-sm tex, mod calc wi brn resd	8780-8900 CHK (80%): pred lt gy-gy v arg LS wi thn wh chky lamn & vf-f mot chk incl, frm, l-mod fis sb ang-sb rd ctgs, tr vf pyr, rr c free chk, tr fos frags, mod-hi calc wi cin HCL rxn, MRLST (15%): gy-dk gy-blk, dk wi OBM sin ip, frm, brt, l fis sb rd-rd occ sb ang ctgs, mot wi brn-th mrlly incl ip, occ-rr vf pyr & vf pyr strg, sl silty-sm tex, mod calc wi brn resd
8000	8000



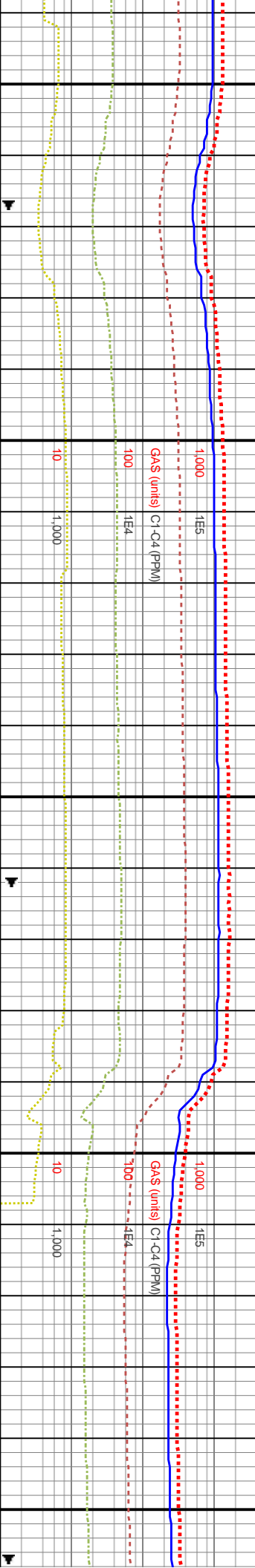


8,840 8,850 8,860 8,870 8,880 8,890 8,900 8,910 8,920 8,930 8,940 8,950 8,960 8,970 8,980 8,990 9,000 9,010 9,020 9,030 9,040 9,050

AVG BGG: 1150u

AVG BGG: 1350u

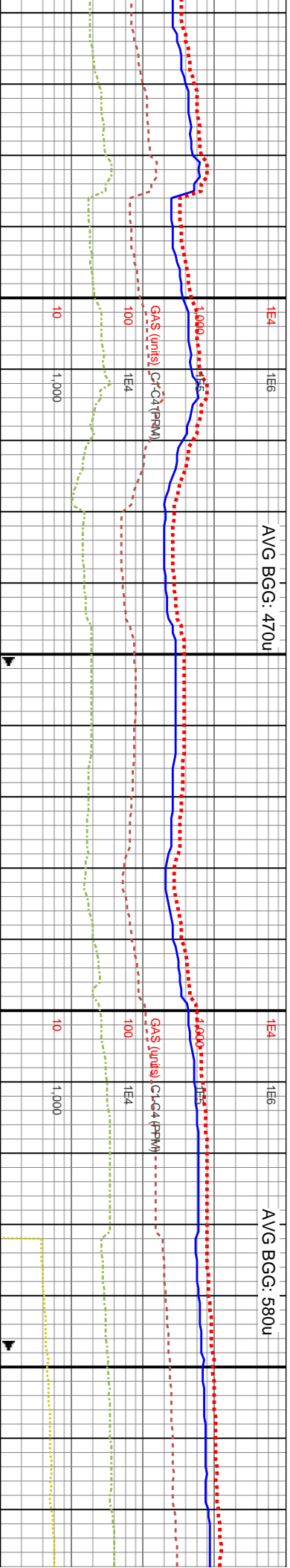
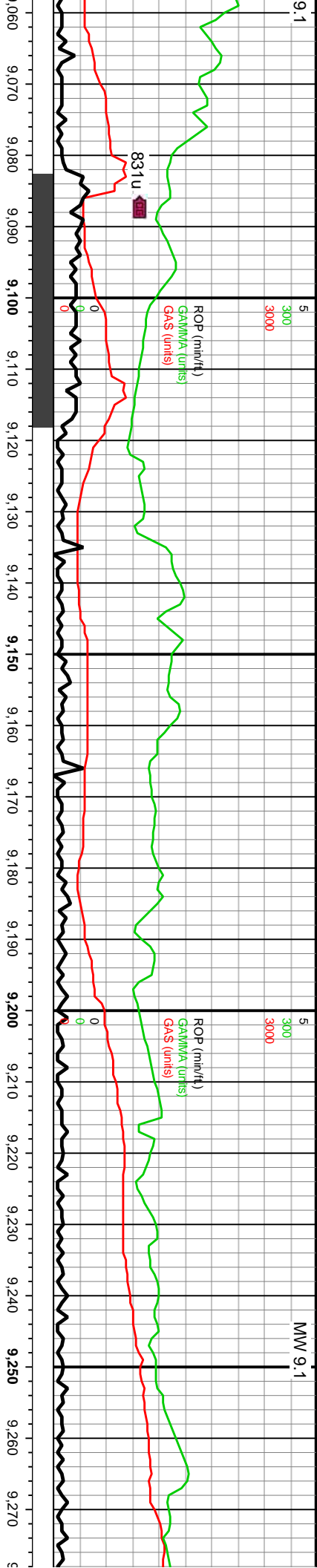
AVG BGG: 700u



	WOB: 41Klbs Rotary: 60RPM Strokes: 240SPM Pump Rate: 688GPM	6500 MD: 8,902' TVD: 7,016.1' Inclination: 92.66° Azimuth: 270.94° VS: 1,749.44'	6500 MD: 8,997' TVD: 7,012.01' Inclination: 92.28° Azimuth: 273.06° VS: 1,844.33'	
--	--	---	--	--

	8900-8960 CHK (65%): It gy-gy, frm, l-mod fis sb ang-sb rd v arg LS ctgs, com u f-med wh chky incl, rr thn wh lamm, tr vf pyr, rr c free chk, tr fos frags, mod-hi calc wi cin HCL rxn, MRLST (35%); gy-dk gy-blk, dk wi OBM stn ip, frm, bnt, l fis sb rd-rd occ sb ang ctgs, mot wi brn-th mntly incl ip, occ-rr vf pyr & vf pyr stly-sm tex, mod calc wi brn resd	8960-9020 CHK (65%): It gy-gy, frm, l-mod fis sb ang-sb rd v arg LS ctgs, com u f-med wh chky incl, rr thn wh lamm, tr vf pyr, rr c free chk, tr fos frags, mod-hi calc wi cin HCL rxn, MRLST (35%); gy-dk gy-blk, dk wi OBM stn ip, frm, bnt, l fis sb rd-rd occ sb ang ctgs, mot wi brn-th mntly incl ip, occ-rr vf pyr & vf pyr stly-sm tex, mod calc wi brn resd	9020-9080 CHK (70%): It gy-gy, f ang-sb rd v arg LS ctgs, com u f-r rr thn wh lamm, tr vf pyr, rr c free c mod-hi calc wi cin HCL rxn, MRL& gy-blk, dk wi OBM stn ip, frm, bnt, sb ang ctgs, mot wi brn-th mntly in vf pyr stly-sm tex, mod cal
--	--	--	---





MD: 9,091'
TVD: 7,010.11'
Inclination: 90.03°
Azimuth: 275.11°
VS: 1,938.29'

6500
WOB: 59Klbs
Rotary: 0RPM
Strokes: 240SPM
Pump Rate: 688GPM

MD: 9,187'
TVD: 7,010.93'
Inclination: 88.99°
Azimuth: 277.34°
VS: 2,034.13'

6500

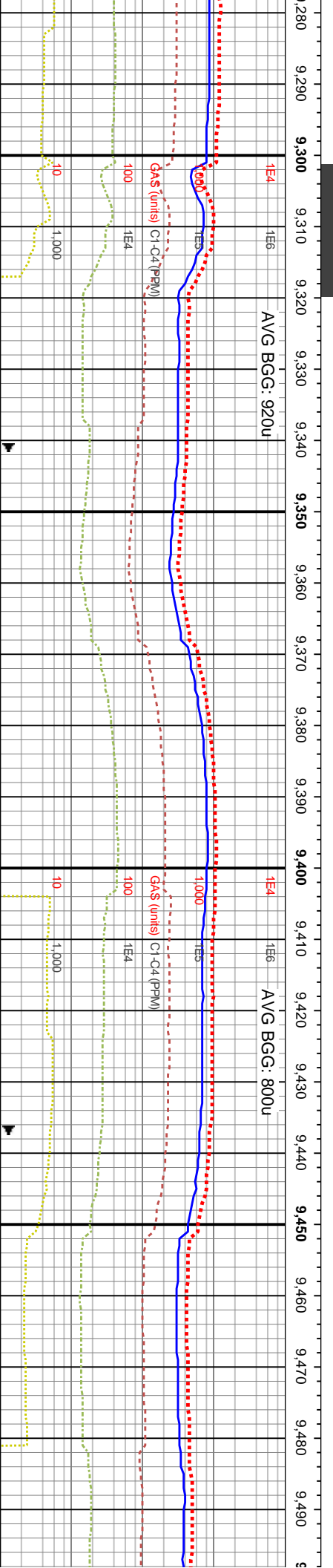
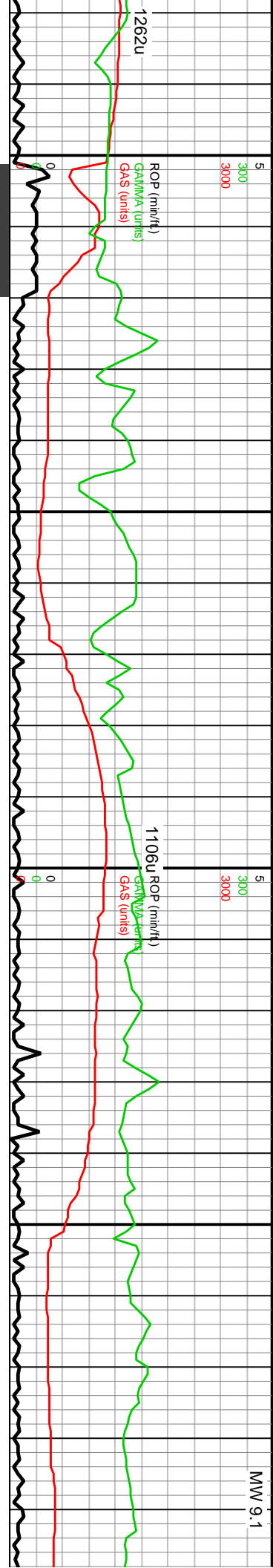
MD: 9
TVD: 7
Inclina
Azimur
VS: 2,

9080-9140 CHK (85%): lt gy-gy, frm, l-mod fis sb ang-sb rd v arg LS ctgs, com u f-med wh chky incl, rr thn wh lamm, tr vf pyr & vf patchy pyr strg, rr c free chk, occ fos frags, mod-hi calc wi cin HCL rxn, MRLST (15%): gy-dk gy-blk, dk wi OBM sin ip, frm, brit, l fis sb rd-rd occ sb ang ctgs, mot wi brn-th mrlly incl ip, occ-rr vf pyr & vf pyr strg, sl silty-sm tex, mod calc wi brn resd

9140-9200 CHK (85%): lt gy-gy v arg LS wi com off wh thn chky lamm & chky incl, occ c free chk, rr-occ fos frags, frm, l-mod fis sb ang-sb rd ctgs, tr vf pyr, mod-hi calc wi cin HCL rxn, MRLST (15%): gy-dk gy-blk, dk wi OBM sin ip, frm, brit, l fis sb rd-rd occ sb ang ctgs, mot wi brn-th mrlly incl ip, occ-rr vf pyr & vf pyr strg, sl silty-sm tex, mod calc wi brn resd

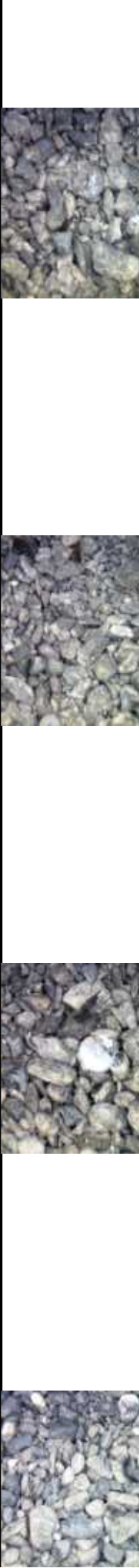
9200-9320 CHK (85%): lt gy-gy v arg LS wi com thn chky lamm & vf-f ch rd ctgs, rr vf pyr & tr vf patchy pyr strg, rr c free chk, tr fos frags, mod-hi gy-dk gy-blk, dk wi OBM sin ip, frm, brit, l fis sb rd-rd occ sb ang ctgs, n pyr & vf pyr strg, sl silty-sm tex, mod calc wi brn resd

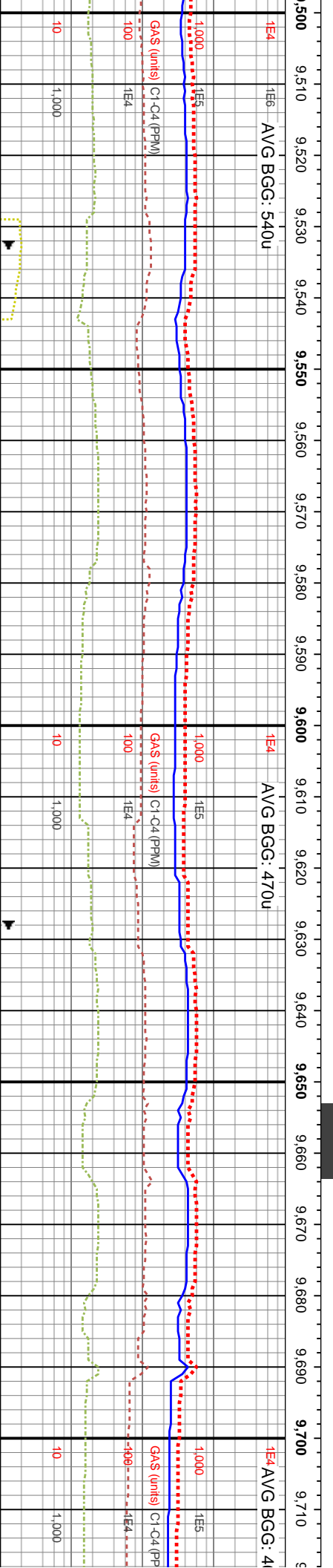
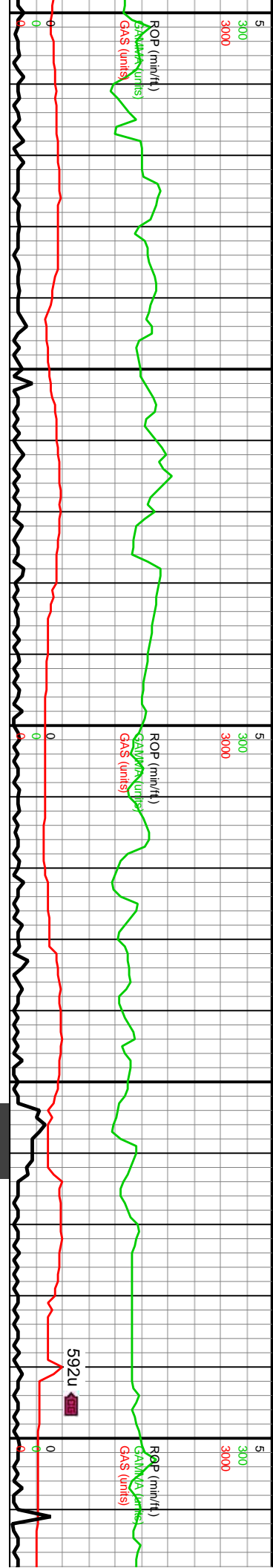




WOB: 37Klbs	MD: 9,377'	WOB: 42K
Rotary: 60RPM	TVD: 7,014.78'	Rotary: 60
Strokes: 239SPM	Inclination: 87.92°	Strokes: 2
Pump Rate: 688GPM	Azimuth: 275.36°	Pump Rate:
	VS: 2,223.74'	

9320-9380 CHK (80%): lt gy-gy, frm, l-mod fis sb ang-sb rd v ang LS cigs, com u f-med wh chkly incl, rr thn wh lamn, tr vf pyr & vf patchy pyr strg, rr c free chk, mod-hi calc wi cin HCL rxn, MRLST (20%): gy-dk gy-blk, occ dk wi OBM shn ip, frm, brit, l fis sb rd-rd occ sb ang cigs, mot wi brn-th mly incl ip, occ-rr vf pyr & vf pyr strg, sl slty-sm tex, mod calc wi brn resd	9380-9440 CHK (80%): lt gy-gy, frm, l-mod fis sb ang-sb rd v ang LS cigs, com u f-med wh chkly incl, rr thn wh lamn, tr vf pyr & vf patchy pyr strg, rr c free chk, mod-hi calc wi cin HCL rxn, MRLST (20%): gy-dk gy-blk, occ dk wi OBM shn ip, frm, brit, l fis sb rd-rd occ sb ang cigs, mot wi brn-th mly incl ip, occ-rr vf pyr & vf pyr strg, sl slty-sm tex, mod calc wi brn resd	9440-9560 CHK (80%): lt gy-gy, frm, l-mod fis sb ang-sb rd v ang LS cigs, com u f-med wh chkly incl, rr thn wh lamn, tr vf pyr & vf patchy pyr strg, rr c free chk, mod-hi calc wi cin HCL rxn, MRLST (20%): gy-dk gy-blk, occ dk wi OBM shn ip, frm, brit, l fis sb rd-rd occ sb ang cigs, mot wi brn-th mly incl ip, occ-rr vf pyr & vf pyr strg, sl slty-sm tex, mod calc wi brn resd
--	--	--

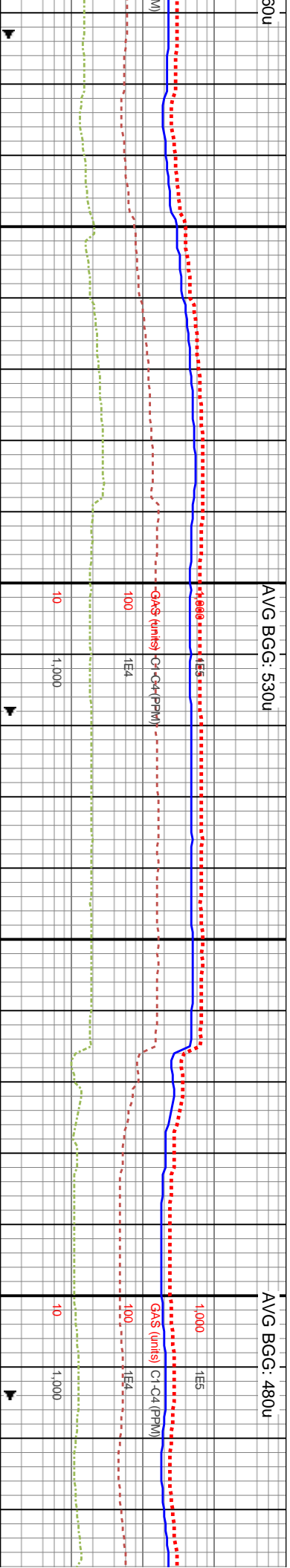
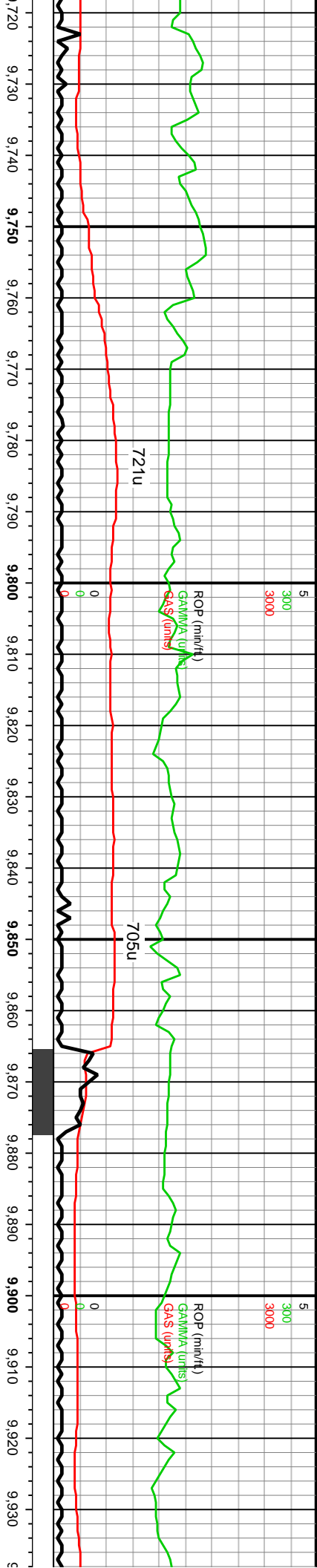




6500	MD: 9,568' TV D: 7,020.94' Inclination: 88.46° Azimuth: 274.54° VS: 2,414.56'	WOB: 44Klbs Rotary: 60RPM Strokes: 239SPM Pump Rate: 688GPM	6500
------	---	--	------

9560-9620 CHK (75%): lt gy-gy, frm, l-mod fls sb ang-sb rd v arg LS ctgs, com u f-med wh chky incl, rr thn wh lamm, tr vf pyr & vf patchy pyr strg, rr c free chk, mod-hi calc, MRLST (25%): gy-dk gy-blk, occ dk wi OBM stn ip, frm, brit, l fls sb rd-rd occ sb ang ctgs, mot wi brn-th mly incl ip, occ-rr vf pyr & vf pyr strg, sltly-sm tex, mod calc wi brn resd	9620-9680 CHK (80%): lt gy-gy v arg LS wi com u f-med wh chky incl & rr thn wh lamm, frm l-mod fls sb ang-sb rd ctgs, com c free chk, rr-occ fcs frags, tr vf pyr & tr pyr strg, mod-hi calc wi cin HCL rxn, MRLST (20%): gy-dk gy-blk, occ dk wi OBM stn ip, frm, brit, l fls sb rd-rd occ sb ang ctgs, mot wi brn-th mly incl ip, occ-rr vf pyr & vf pyr strg, sltly-sm tex, mod calc wi brn resd	9680-9800 CHK (75%): lt gy-gy, l f-med wh chky incl, rr thn wh lamm, tr vf pyr & vf patchy pyr strg, mod-hi calc wi cin HCL rxn, MRLST (25%): gy-dk gy-blk, occ dk wi OBM stn ip, frm, brit, l fls sb rd-rd occ sb ang ctgs, mot wi brn-th mly incl ip, occ-rr vf pyr & vf pyr strg, sltly-sm tex, mod calc wi brn resd
--	---	---

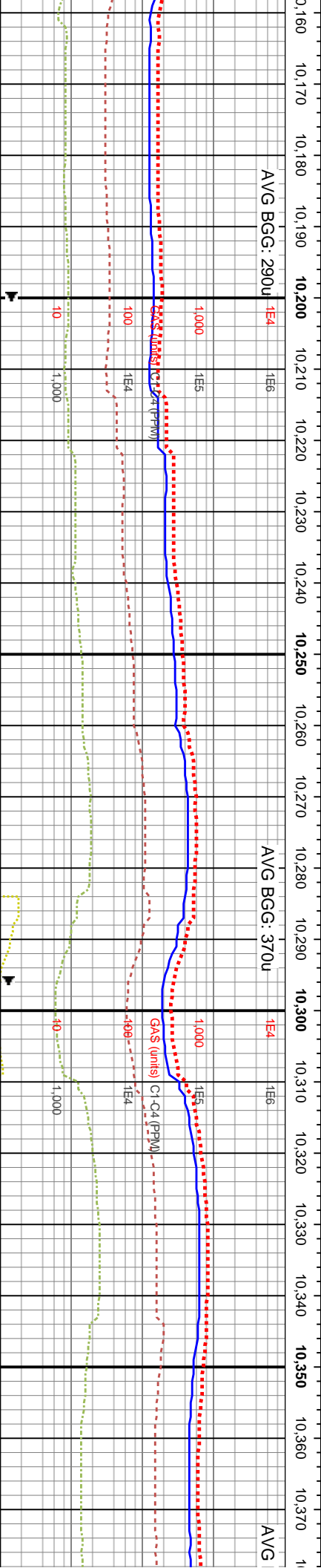
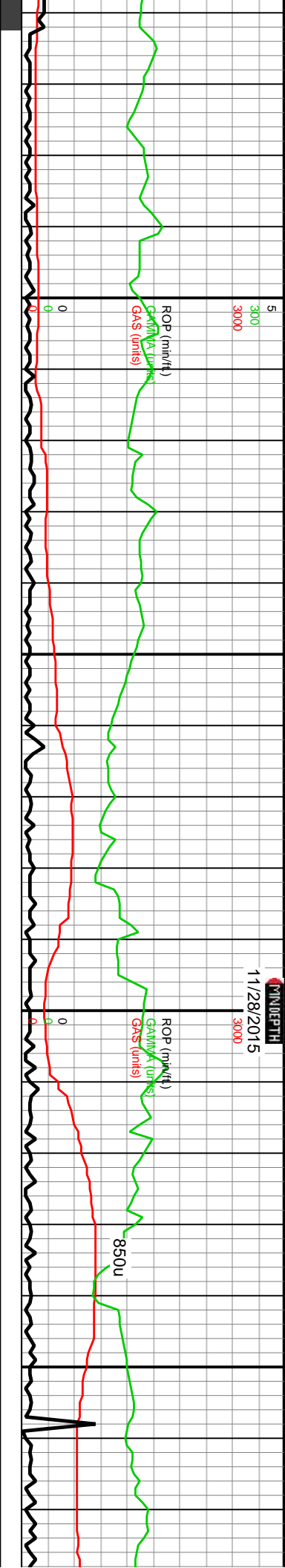




MD: 9,759' TVD: 7,023.26' Inclination: 89.03° Azimuth: 272.83° VS: 2,605.52'	MD: 9,854' TVD: 7,024.32' Inclination: 89.7° Azimuth: 271.19° VS: 2,700.49'
--	---

9800-9860 CHK (75%): lt gy-gy, frm, l-mod fis sb ang-sb rd v arg LS ctgs, com u f-med wh chky incl, r thn wh lamn, tr vf pyr & vf patchy pyr strg, rr c free chk, mod-hi calc, MRLST (25%): gy-dk gy-blk, occ dk wi OBM stn ip, frm, brt, l fis sb rd-rd occ sb ang ctgs, mot wi brn-tn mrlly incl ip, occ-rr vf pyr & vf pyr strg, sl stly-sm tex, mod calc wi brn resd	9860-9920 CHK (75%): lt gy-gy frm v arg LS wi com thn wh chky lamn & vf-f incl, l-mod fis sb ang-sb rd ctgs, tr vf pyr & vf patchy pyr strg, rr c free chk, mod-hi calc, MRLST (25%): gy-dk gy-blk, occ dk wi OBM stn ip, frm, brt, l fis sb rd-rd occ sb ang ctgs, mot wi brn-tn mrlly incl ip, occ-rr vf pyr & vf pyr strg, sl stly-sm tex, mod calc wi brn resd
--	--

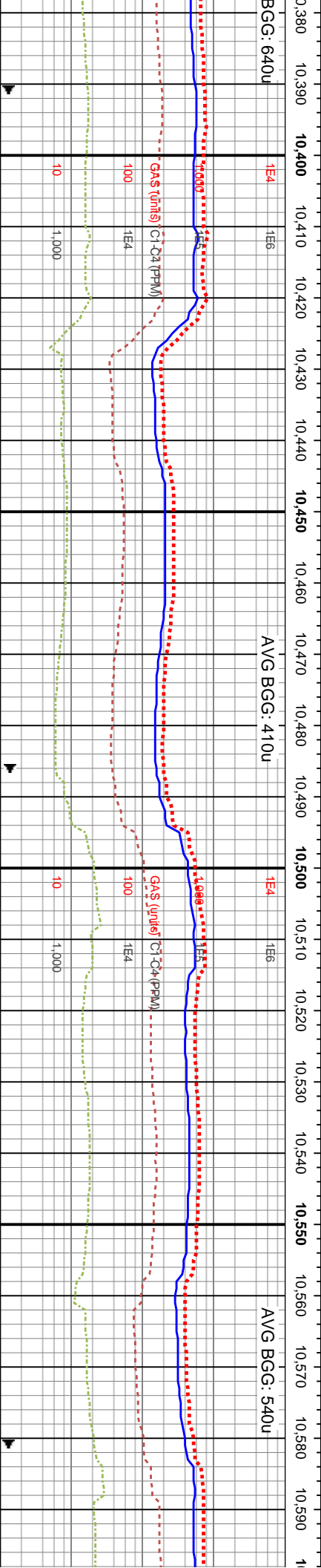
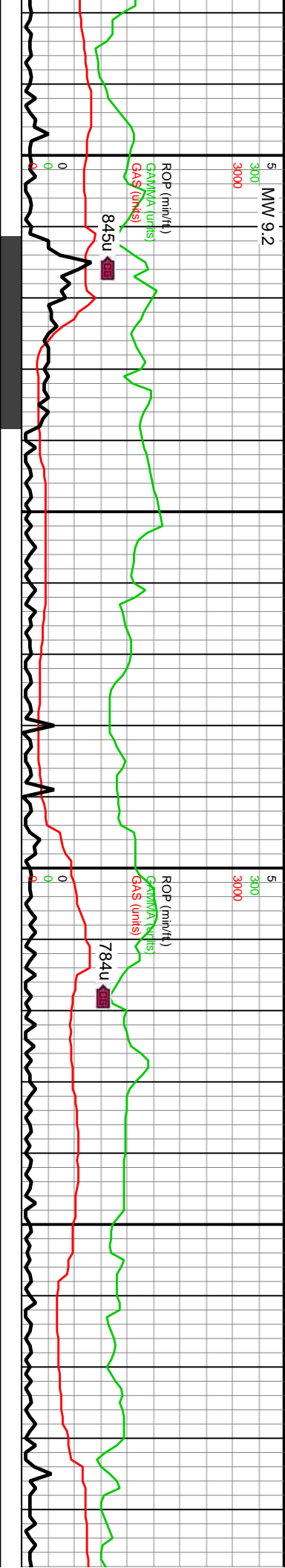




6500	MD: 10.236' TVD: 7,023.01' Inclination: 91.58° Azimuth: 270.74° VS: 3,082.3'	WOB: 31Klbs Rotary: 60RPM Strokes: 240SPM Pump Rate: 688GPM	6500	MD: 10.331' TVD: 7,019.65' Inclination: 92.48° Azimuth: 270.74° VS: 3,177.16'
------	--	--	------	---

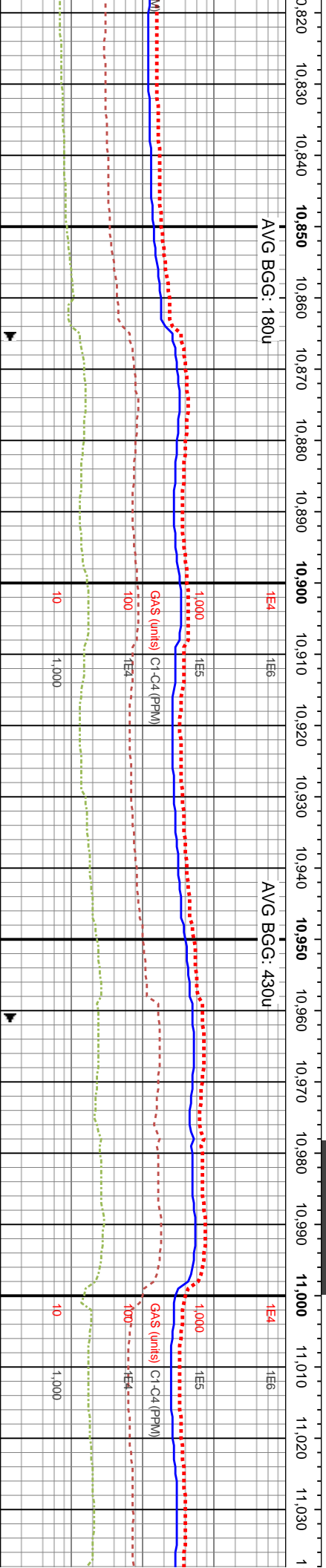
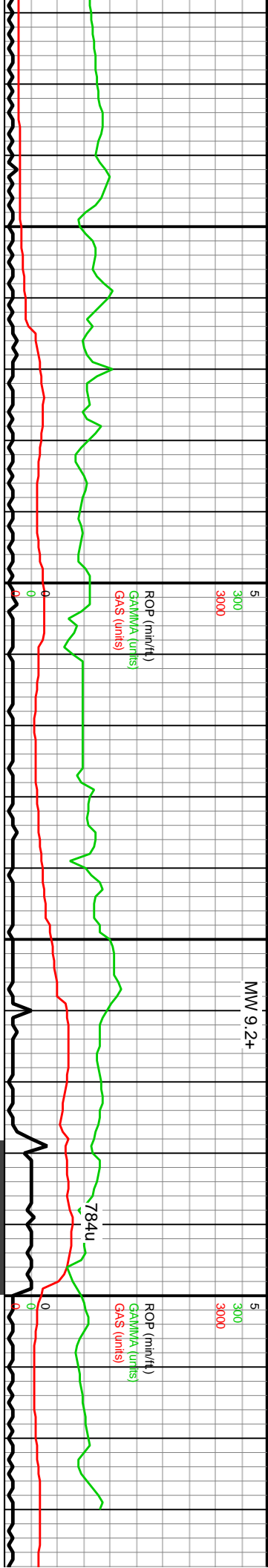
10160-10220 CHK: lt gy-gy, frm v arg LS wi wh chky lamn & vf-f incl, l-mod fis sb ang-sb rd ctgs, tr vf pyr & vf patchy pyr strg, occ-com c free chk, mod-hi calc wi cin HCL rxn, wi occ MRLST: gy-dk gy, occ dk wi OBM stn ip, frm, brit, l fis sb rd-rd occ sb ang ctgs, mot wi brn-tn mrlly incl ip, occ-r vf pyr & vf pyr strg, sl stly-sm tex, mod calc wi brn resd	8000	10220-10280 CHK: lt gy-gy, frm v arg LS wi wh chky lamn & vf-f incl, l-mod fis sb ang-sb rd ctgs, tr vf pyr & vf patchy pyr strg, occ-com c free chk, mod-hi calc wi cin HCL rxn, wi occ MRLST: gy-dk gy, occ dk wi OBM stn ip, frm, brit, l fis sb rd-rd occ sb ang ctgs, mot wi brn-tn mrlly incl ip, occ-r vf pyr & vf pyr strg, sl stly-sm tex, mod calc wi brn resd	8000	10280-10400 CHK (90%): lt gy-gy, frm l-mod fis sb ang-sb rd ctgs, v arg LS wi wh chky lamn & vf-f incl, l-mod fis sb ang-sb rd ctgs, tr vf pyr & vf patchy pyr strg, occ-com c free chk, mod-hi calc wi cin HCL rxn, wi 10% MRLST: gy-dk gy, occ dk wi OBM stn ip, frm, brit, l fis sb rd-rd occ sb ang ctgs, mot wi brn-tn mrlly incl ip, occ-r vf pyr & vf pyr strg, sl stly-sm tex, mod calc wi brn resd	8000
--	------	--	------	---	------





6500	MD: 10,426' TVD: 7,016.72' Inclination: 91.04° Azimuth: 272.4° VS: 3,272.08'	6500	MD: 10,521' TVD: 7,014.88' Inclination: 91.18° Azimuth: 273.37° VS: 3,367.06'
10400-10460 CHK: lt gy-gy, frm v arg LS wi wh chky lamn & vf-f incl, l-mod fis sb ang-sb rd cigs, tr vf pyr & vf patchy pyr strg, occ-com c free chk, mod-hi calc wi cin HCL rxn	10460-10520 CHK: lt gy-gy, frm, l-mod fis sb ang-sb rd cigs, v arg LS wi wh chky lamn & vf-f incl tr vf pyr & pyr strg, tr c free chk, mod-hi calc wi cin HCL rxn	10520-10580 CHK: lt gy-gy, frm, l-mod fis sb ang-sb rd cigs, v arg LS wi wh chky lamn & vf-f incl tr vf pyr & pyr strg, tr c free chk, mod-hi calc wi cin HCL rxn	10580-10640 Ch
8000	8000	8000	





WOB: 41Klbs
Rotary: 60RPM
Strokes: 239STVD: 7,009.98'
Pump Rate: 6Inclination: 90.64°
Azimuth: 277.99°
VS: 3,746.62'

MD: 10,997'
TVD: 7,009.53'
Inclination: 89.9°
Azimuth: 277.46°
VS: 3,842.3'

10820-10880 CHK (90%): It gy-gy v arg LS wi wh
chky lamn & vf-f incl, frm-brt l-mod fis sb ang-sb rd
ctgs, tr vf pyr, occ c free chk, mod-hi calc wi cin HCL
rxn, wi occ MRLST (10%): gy-dk gy, occ dk wi OBM
stin ip, frm, brit, l fis sb rd-rd occ sb ang ctgs, mot wi
brn-tn mrlly incl ip, occ-tr vf pyr & vf pyr strg, sl stly-sm
tex, mod calc wi brn

10880-10940 CHK: pred It gy-gy, frm-brt l-mod fis
sb ang-sb rd ctgs, v arg LS wi wh chky lamn & vf-f
incl, tr vf pyr, occ c free chk, mod-hi calc wi cin HCL
rxn, wi occ MRLST: gy-dk gy, occ dk wi OBM stn ip,
frm, brit, l fis sb rd-rd occ sb ang ctgs, mot wi brn-tn
mrlly incl ip, occ-tr vf pyr & vf pyr strg, sl stly-sm tex,
mod calc wi brn resd

10940-11000 CHK (90%): It gy-gy, frm v arg LS wi
wh chky lamn & vf-f incl, l-mod fis sb ang-sb rd ctgs,
tr vf pyr & vf patchy pyr strg, occ-com c free chk,
mod-hi calc wi cin HCL rxn, wi occ MRLST (10%):
gy-dk gy, occ dk wi OBM stn ip, frm, brit, l fis sb rd-rd
occ sb ang ctgs, mot wi brn-tn mrlly incl ip, occ-tr vf
pyr & vf pyr strg, sl stly-sm tex, mod calc wi brn resd

11000-11060 CHK: It gy-gy v arg LS wi
& vf-f incl, frm-brt l-mod fis sb ang-sb rd ctgs,
pyr, occ c free chk, mod-hi calc wi cin HCL
MRLST: gy-dk gy, occ dk wi OBM stn ip, frm, brit, l fis sb
rd-rd occ sb ang ctgs, mot wi brn-tn mrlly incl ip, occ-tr vf
pyr & vf pyr strg, sl stly-sm tex, mod calc wi brn resd



