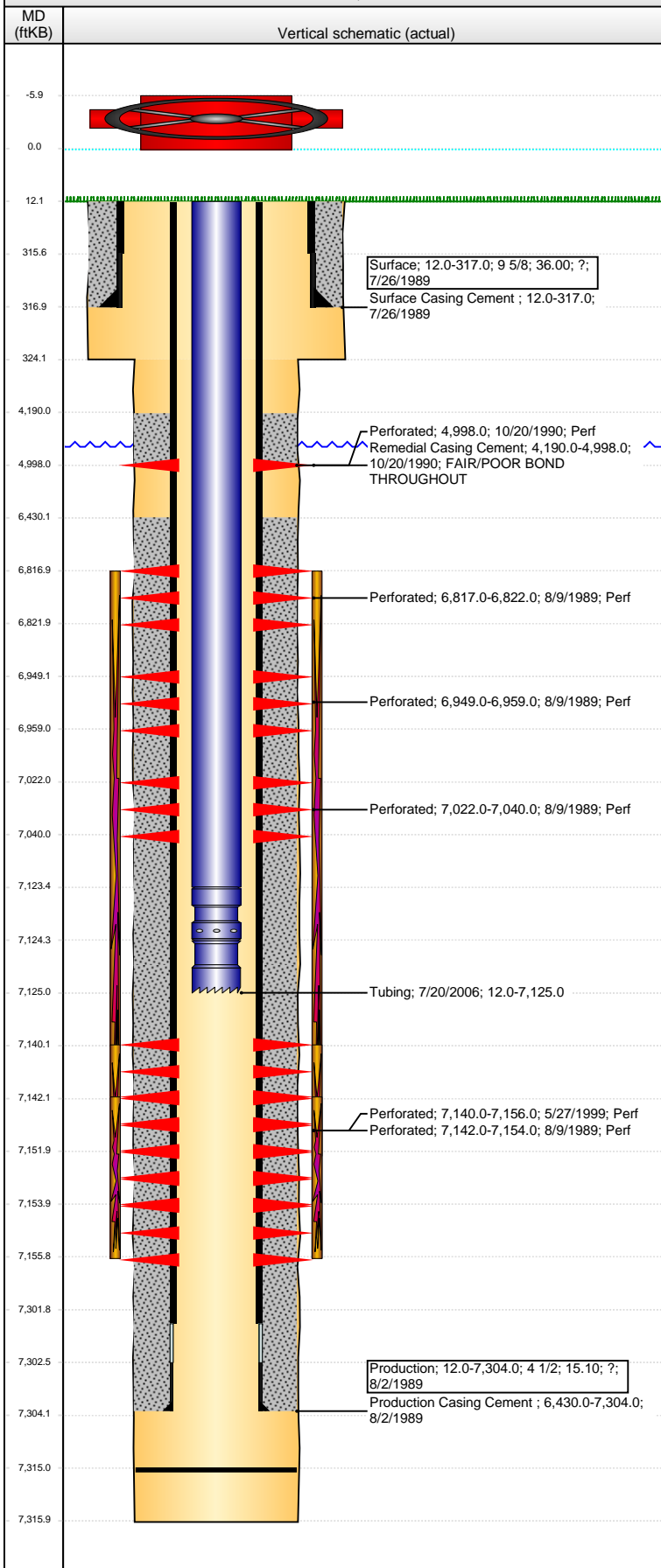


**Well Name: SPOMER BCJ33-14**

VERTICAL - ORIGINAL HOLE, 1/28/2016 11:02:16 AM



## Well Header

API	Business Unit	District	Well Config
05-123-14334	DJ BASIN	15	VERTICAL
Original KB Elevation (ft)	KB - GL / MSL (ftKB)	Spud Date	P & A Date
4,697.00	12.00	7/26/1989	

Comment  
DISCREPANCY IN SURF CSG HOLE, ST RPT & LOGS = 12 1/4 AND DRILLING RPTS = 13 3/4.

TD DISCREPANCY: DRL RPTS & LOGS = 7316, ST RPT = 7315

Directions To Well

## Congressional Location

Quarter 1	Quarter 2	Quarter 3	Quarter 4	Section	Township	Twnshp N...	Range	Rng E/W Dir
		SE	SW	33	5	N	66	W

## Bottom Hole Location

North-South Distance (ft)	From N or S Line	East-West Distance (ft)	From E or W Line

## Plug Back Total Depths

Date	Depth (ftKB)	Method	Com
8/4/1989	7,249.0	CASED HOLE LOG	DEPTH LOGGER FROM CBL
7/20/2006	7,315.0	TAG	CLEAN OUT & LAND TBG

## Wellbore Sections

Section Des	Size (in)	Act Top, MD (ftKB)	Act Btm, MD (ftKB)
SURFACE	12 1/4	12.0	324.0
PRODUCTION	7 7/8	324.0	7,316.0

## Zone Statuses

Zone Name	Status Date	Status	Fluid Type	Job	Prod Method
CODELL	8/26/1989	PR		DRILLING/CO...	
CODELL	6/5/1999	PR		RE-FRAC, 5/26...	
CODELL	8/28/2006	PR		TRI-FRAC, 6/2/...	
NIOBRARA	8/26/1989	PR		DRILLING/CO...	

## Casing Strings

### Surface, 317.0ftKB

Casing Description	Run Date	OD (in)	Wt/Len (l...)	Grade	Top, MD (ft...)	MD (ftKB)
Surface	7/26/1989	9 5/8	36.00	?	12.0	317.0

### Production, 7,304.0ftKB

Casing Description	Run Date	OD (in)	Wt/Len (l...)	Grade	Top, MD (ft...)	MD (ftKB)
Production	8/2/1989	4 1/2	15.10	?	12.0	7,304.0

## Cement

Description	Top Depth (ftKB)	Bottom Depth (ftKB)
Surface Casing Cement	12.0	317.0
Production Casing Cement	6,430.0	7,304.0
Remedial Casing Cement	4,190.0	4,998.0

## Tubing Strings

Tubing Description	Run Date	String...	ID (in)	Wt (lb/ft)	Grade	Len (ft)	Set De...
Tubing	7/20/2006	2 3/8	1.995	4.70	J-55	7,113.00	

## Tubing Components

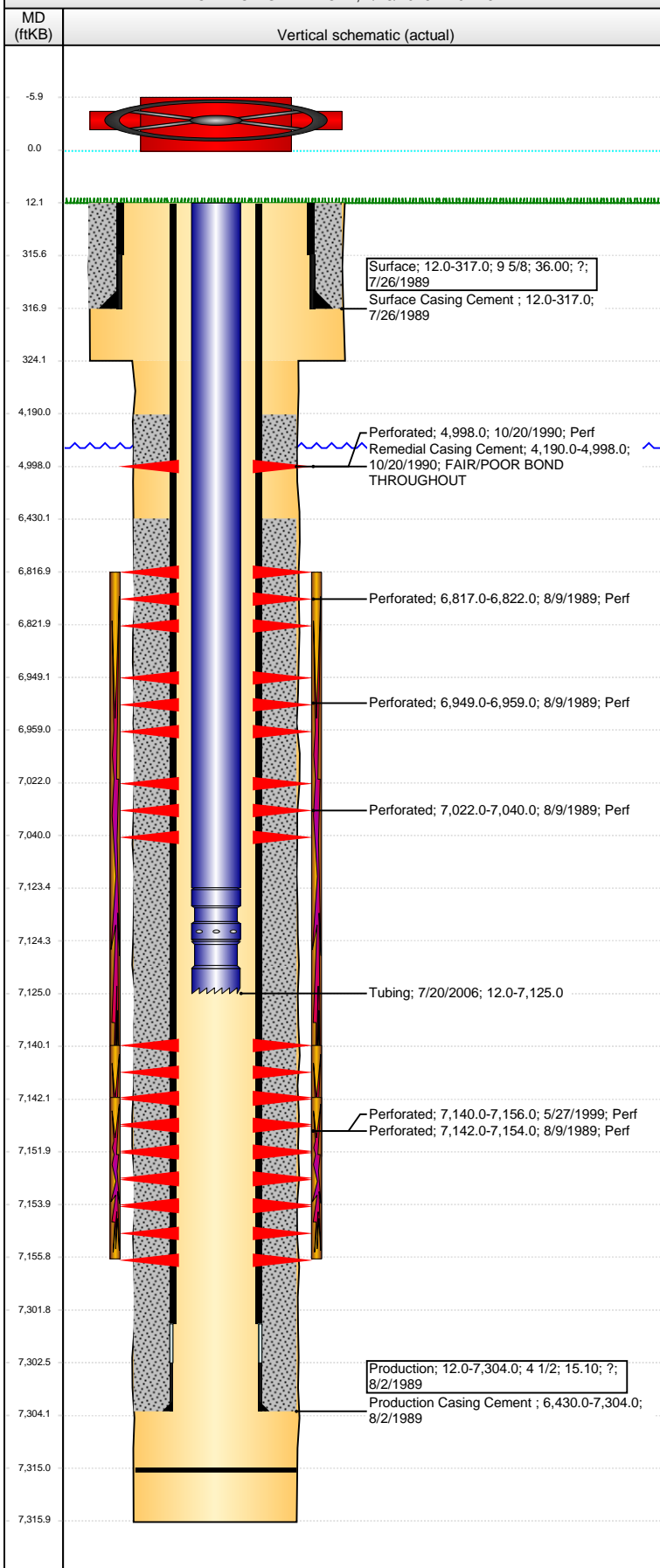
Item Des	OD (in)	Wt (lb/ft)	Grade	Jts	Len (ft)	Btm (ftKB)	Btm (TVD) (ftKB)
EUE 8rd Tubing	2 3/8	4.70	J-55	218	7,111.35	7,123.4	
Pump Seating	2 3/8	1.10			1.00	7,124.4	
Nipple							
Notched collar	2 3/8				0.65	7,125.0	

## Perforation Data

Zone	Bnch/St g	Entered Shot Total	Top (ftKB)	Btm (ftKB)	Date
NIOBRARA, ORIGINAL HOLE	A	6	4,998.00	4,998.00	10/20/1990
NIOBRARA, ORIGINAL HOLE	B	2	6,817.00	6,822.00	8/9/1989
NIOBRARA, ORIGINAL HOLE	B	4	6,949.00	6,959.00	8/9/1989
NIOBRARA, ORIGINAL HOLE	C	3	7,022.00	7,040.00	8/9/1989
CODELL, ORIGINAL HOLE		64	7,140.00	7,156.00	5/27/1999
CODELL, ORIGINAL HOLE		9	7,142.00	7,154.00	8/9/1989

**Well Name: SPOMER BCJ33-14**

VERTICAL - ORIGINAL HOLE, 1/28/2016 11:02:18 AM



## Stimulations & Treatments

Date	8/16/1989	Zone	NIORARA-CODELL, ORIGINAL HOLE	Primary Job Type	DRILLING/COMPLETION - ORIGINAL
Technical Result		Tech Result Details		Tech Result Note	

Comment  
LIMITED ENTRY

Date	6/2/1999	Zone	CODELL, ORIGINAL HOLE	Primary Job Type	RE-FRAC
Technical Result		Tech Result Details		Tech Result Note	

Comment

Date	7/18/2006	Zone	CODELL, ORIGINAL HOLE	Primary Job Type	TRI-FRAC
Technical Result		Tech Result Details		Tech Result Note	

Comment

## Other In Hole

Run Date	Des	OD (in)	Top (ftKB)	Btm (ftKB)

## Logs

Date	Type	Top, MD (ftKB)	Btm, MD (ftKB)
8/1/1989	COMPENSATED DENSITY	4,200.0	7,296.0
8/1/1989	INDUCTION	317.0	7,316.0
8/4/1989	CEMENT BOND	6,300.0	7,246.0
10/23/1990	CBL/CCL/GR	4,100.0	4,980.0