

**BONANZA CREEK ENERGY OPERATING CO
PO BOX 21974
BAKERSFIELD, California**

State Seventy Holes O-K-6HNB

Ensign 136

Post Job Summary **Cement Intermediate Casing**

Date Prepared: October 2, 2013
Version: 1

Service Supervisor: BIRCHELL, DEVIN

Submitted by: ESTENSSORO, SEBASTIAN

HALLIBURTON

HALLIBURTON

Wellbore Geometry

Job Tubulars					MD		TVD	
Type	Description	Size in	ID in	Wt lbm/ft	Top ft	Bottom ft	Top ft	Bottom ft
Casing	9 5/8" Surface Casing	9.63	8.921	36.00	0.00	476.00		
Open Hole Section	8 3/4" Open Hole Section		8.750		476.00	6,860.00	476.00	6,262.00
Casing	7" Intermediate Casing	7.00	6.276	26.00	0.00	6,860.00	0.00	6,262.00

HALLIBURTON

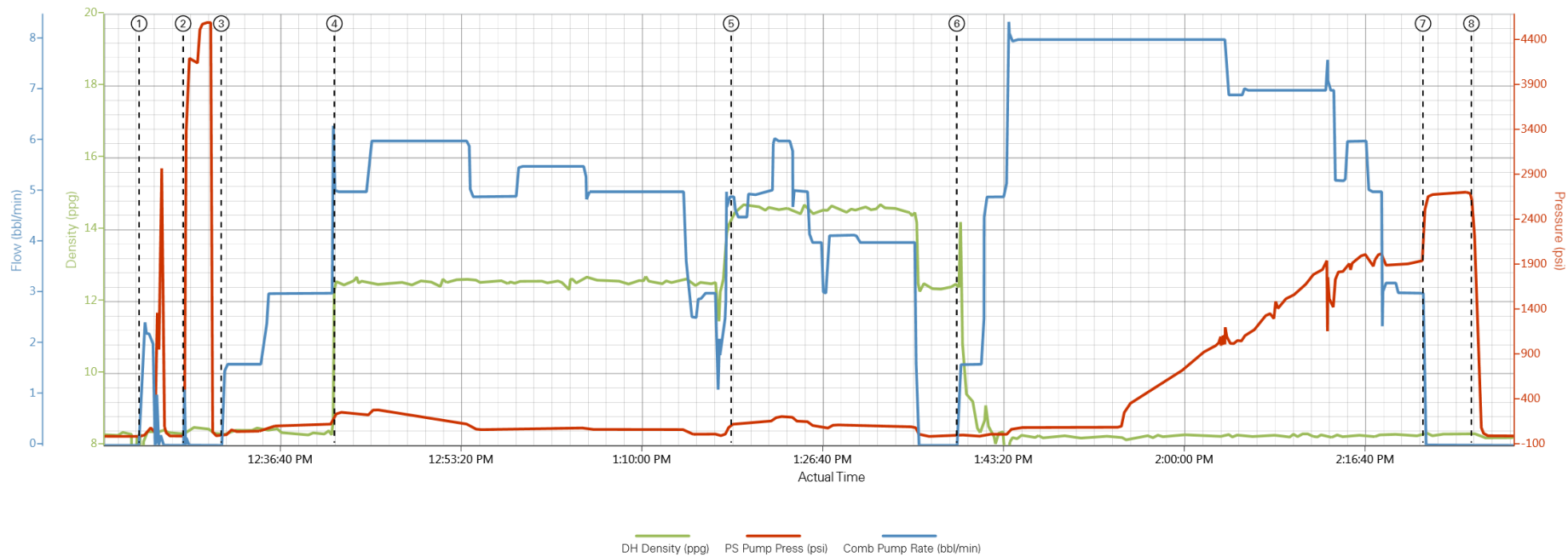
Pumping Schedule

Stage /Plug #	Fluid #	Fluid Type	Fluid Name	Surface Density lbm/gal	Avg Rate bbl/min	Surface Volume	Downhole Volume
1	1	Spacer	Mud Flush	8.40	3.00	24.0 bbl	24.0 bbl
1	2	Cement Slurry	EconoCem B2	12.50	5.00	558.0 sacks	558.0 sacks
1	3	Cement Slurry	ExpandaCem B1	14.60	5.00	276.0 sacks	276.0 sacks

HALLIBURTON

Data Acquisition

State Seventy Holes O-K-6HNB



① Start Job ② Pressure Test ③ Pump Spacer 1 ④ Pump Lead Cement ⑤ Pump Tail Cement ⑥ Pump Displacement ⑦ Bump Plug ⑧ Check Floats

▲ Halliburton | iCem Service®

Created: 2013-09-29 11:22:00 , Version: 1.4.96

Edit

Service Supervisor Reports

Job Log

Date/Time	Chart #	Activity Code	Pump Rate	Cum Vol	Pump	Pressure (psig)	Comments
09/29/2013 05:00		Call Out					Called out for Bonanza Creek State Seventy Holes O-K-6HNB Intermediate
09/29/2013 07:50		Pre-Convoy Safety Meeting					Discuss road and weather consitions, fatigue adn following distance
09/29/2013 08:00		Depart from Service Center or Other Site					Depart for location
09/29/2013 09:30		Casing on Bottom					Casing on Bottom rig will circulate until cement pump shows up and rigged up
09/29/2013 10:00		Arrive At Loc					Talked to company rep on rates, volumes, and depth, waiting on cement pump to arrive to location
09/29/2013 11:10		Pre-Rig Up Safety Meeting					Discussed rig up, line of fire, slips, and pinch points
09/29/2013 11:15		Rig-Up Equipment					Rig up all HES Equipment
09/29/2013 12:07		Pre-Job Safety Meeting					Discuss pump schedule, procedure, high pressure iron, and emergency plan
09/29/2013 12:22		Other					Stop circulation and stab cement head with 1top plug pre loaded and verified by tool pusher
09/29/2013 12:23		Other					Fill Lines
09/29/2013 12:25		Pressure Test				4605.0	Pressure test to 4605PSI
09/29/2013 12:31		Pump Spacer	3	24		74.0	Pump Mud Flush III at 8.4ppg
09/29/2013 12:41		Pump Lead Cement	5	187		106.0	Pump Lead Cement at 12.5PPG Y:1.89ft^3/sk W: 10.28gal/sk 558sks
09/29/2013 13:17		Slow Rate	3				Reduced rate to switch out bulk trucks
09/29/2013 13:18		Pump Tail Cement	5	71		144.0	Pump Tail Cement at 14.6PPG Y:1.46ft^3/sk W: 6.07gal/sk 276sks
09/29/2013 13:36		Shutdown					Shutdown to drop top plug
09/29/2013 13:38		Drop Top Plug					Drop Top Plug, washed up on top of plug.
09/29/2013 13:39		Pump Displacement - Start	5				Pump Displacement 262BBL water
09/29/2013 13:45		Returns To Surface	8	20		100.0	Returns seen at surface with 20BBLs displacement away
09/29/2013 13:54		Displ Reached Cmmt	8	92		336.0	Displacement reached cement with 92BBLs away
09/29/2013 14:11		Spacer Returns to Surface	7	205		1586.0	At 205 bbl displacement Spacer returns to surface
09/29/2013 14:15		Cement Returns to Surface	6	231		1900.0	At 231 bbls Displacement away cement returns to surface
09/29/2013 14:22		Bump Plug	3	262		1980.0	Bumped Plug with 262BBLs away increased to 2696PSI
09/29/2013 14:26		Check Floats				2696.0	Checked floats, floats held with 3 bbls back to truck
09/29/2013 14:30		Job Complete					Job complete, release pressure and rig down
09/29/2013 14:35		Pre-Rig Down Safety Meeting					Discuss pressure on teh head, slips, trips, falls, and overhead loads
09/29/2013 14:40		Rig-Down Equipment					Begin rigging down everything but the head
09/29/2013 15:30		Pre-Convoy Safety Meeting					Discuss Fatigue, wildlife, weather, and journey management
09/29/2013 15:35		Depart Location for Service Center or Other Site					Depart for the yard

The Road to Excellence Starts with Safety

Sold To #: 324725		Ship To #: 3108857		Quote #:		Sales Order #: 900781664	
Customer: BONANZA CREEK ENERGY OPERATING CO				Customer Rep: Kornik, Kenny			
Well Name: State Seventy Holes			Well #: O-K-6HNB		API/UWI #: 05-123-37928		
Field: WATTENBERG		City (SAP): KERSEY		County/Parish: Weld		State: Colorado	
Lat: N 40.335 deg. OR N 40 deg. 20 min. 7.368 secs.				Long: W 104.363 deg. OR W -105 deg. 38 min. 13.236 secs.			
Job Purpose: Cement Intermediate Casing							
Well Type: Development Well				Job Type: Cement Intermediate Casing			
Sales Person: PLIENESS, RYAN			Srvc Supervisor: BIRCHELL, DEVIN			MBU ID Emp #: 466993	
Job Personnel							
HES Emp Name	Exp Hrs	Emp #	HES Emp Name	Exp Hrs	Emp #	HES Emp Name	Exp Hrs
BIRCHELL, DEVIN Ray	0.0	466993	MARKOVICH, STEVEN Michael	0.0	502964	SINCLAIR, RICHARD	0.0
Equipment							
HES Unit #	<i>Distance-1 way</i>	HES Unit #	<i>Distance-1 way</i>	HES Unit #	<i>Distance-1 way</i>	HES Unit #	<i>Distance-1 way</i>
Job Hours							
Date	<i>On Location Hours</i>	Operating Hours	Date	<i>On Location Hours</i>	Operating Hours	Date	<i>On Location Hours</i>
TOTAL		<i>Total is the sum of each column separately</i>					
Job				Job Times			
Formation Name				Date			
Formation Depth (MD) Top				Time			
Bottom				Time Zone			
Form Type				Called Out			
Job depth MD 6860. ft				On Location 29 - Sep - 2013			
Water Depth				Job Started 29 - Sep - 2013			
Perforation Depth (MD) From				Job Completed 29 - Sep - 2013			
To				Departed Loc 29 - Sep - 2013			
Well Data							
Description	New / Used	Max pressure psig	Size in	ID in	Weight lbm/ft	Thread	Grade
8 3/4" Open Hole Section				8.75			
7" Intermediate Casing	Unknow n		7.	6.276	26.		P-110
9 5/8" Surface Casing	Unknow n		9.625	8.921	36.		J-55
Sales/Rental/3rd Party (HES)							
Description				Qty	Qty uom	Depth	Supplier
CMT CASING EQUIPMENT BOM				1	JOB		
MILEAGE FOR CEMENTING CREW,ZI				90	MI		
ZI FUEL SURCHG-CARS/PICKUPS<1 1/2TON				90	MI		
SHOE,FLT,7 8RD,2-3/4 SS II VLV				1	EA		
Description				Qty	Qty uom	Depth	Supplier

CLR,FLT,7 LG 8RD 23-26PPF,2-3/4						1	EA		
PLUG,CMTG,TOP,7,HWE,5.66 MIN/6.54 MAX CS						1	EA		
Fluid Data									
Stage/Plug #: 1									
Fluid #	Stage Type	Fluid Name	Qty	Qty uom	Mixing Density lbm/gal	Yield ft3/sk	Mix Fluid Gal/sk	Rate bbl/min	Total Mix Fluid Gal/sk
1	Mud Flush		24.0	bbl	8.4			3.0	
	42 gal/bbl	MUD FLUSH III - SBM (528788)							
	3.5 lbm/bbl	MUD FLUSH III, 40 LB SACK (101633304)							
2	EconoCem B2	ECONOCEM (TM) SYSTEM (452992)	558.0	sacks	12.5	1.89	10.28	5.0	10.28
	10.28 Gal	FRESH WATER							
3	Expandacem B1	EXPANDACEM (TM) SYSTEM (452979)	276.0	sacks	14.6	1.46	6.07	5.0	6.07
	6.07 Gal	FRESH WATER							
The Information Stated Herein Is Correct					Customer Representative Signature				

