
WILLIAMS PRODUCTION RMT INC EBUSINE

**RWF 32-35
RULISON
Garfield County , Colorado**

Cement Surface Casing
24-Jun-2010

Job Site Documents

The Road to Excellence Starts with Safety

Sold To #: 300721		Ship To #: 2717658		Quote #:		Sales Order #: 7444692	
Customer: WILLIAMS PRODUCTION RMT INC EBUSINE				Customer Rep: KLATT, BRIAN			
Well Name: RWF		Well #: 32-35		API/UWI #: 05-045-18747			
Field: RULISON		City (SAP): RIFLE		County/Parish: Garfield		State: Colorado	
Lat: N 39.487 deg. OR N 39 deg. 29 min. 13.56 secs.				Long: W 107.853 deg. OR W -108 deg. 8 min. 48.318 secs.			
Contractor: H&P 280		Rig/Platform Name/Num: H&P 280					
Job Purpose: Cement Surface Casing							
Well Type: Development Well				Job Type: Cement Surface Casing			
Sales Person: KOHL, KYLE		Srvc Supervisor: CARTER, ERIC			MBU ID Emp #: 345598		
Job Personnel							
HES Emp Name	Exp Hrs	Emp #	HES Emp Name	Exp Hrs	Emp #	HES Emp Name	Exp Hrs
CARTER, ERIC Earl	3.5	345598	JENSEN, SHANE Lynn	3.5	441759	MAGERS, MICHAEL Gerard	3.5
STEELE, BENJAMIN F	3.5	458599					
Equipment							
HES Unit #	Distance-1 way	HES Unit #	Distance-1 way	HES Unit #	Distance-1 way	HES Unit #	Distance-1 way
10867094	60 mile	10872429	60 mile	10897925	60 mile	10951251	60 mile
11360883	60 mile						
Job Hours							
Date	On Location Hours	Operating Hours	Date	On Location Hours	Operating Hours	Date	On Location Hours
6/24/10	3.5	1					
TOTAL		<i>Total is the sum of each column separately</i>					
Job				Job Times			
Formation Name				Date	Time	Time Zone	
Formation Depth (MD)	Top	Bottom	1162 FT	Called Out	24 - Jun - 2010	05:00	CST
Form Type	BHST			On Location	24 - Jun - 2010	08:30	CST
Job depth MD	1162. ft	Job Depth TVD	1162. ft	Job Started	24 - Jun - 2010	10:16	CST
Water Depth	Wk Ht Above Floor			Job Completed	24 - Jun - 2010	11:04	CST
Perforation Depth (MD)	From	To		Departed Loc	24 - Jun - 2010	12:00	CST
Well Data							
Description	New / Used	Max pressure psig	Size in	ID in	Weight lbm/ft	Thread	Grade
Sales/Rental/3rd Party (HES)							
Description	Qty	Qty uom	Depth	Supplier			
PLUG,CMTG,TOP,9 5/8,HWE,8.16 MIN/9.06 MA	1	EA					
R/A DENSOMETER W/CHART RECORDER,/JOB,ZI	1	JOB					
PORT. DAS W/CEMWIN;ACQUIRE W/HES, ZI	1	JOB					
ADC (AUTO DENSITY CTRL) SYS, /JOB,ZI	1	JOB					
Tools and Accessories							
Type	Size	Qty	Make	Depth	Type	Size	Qty
Guide Shoe					Packer		
Float Shoe					Bridge Plug		
Float Collar					Retainer		
Insert Float							
Stage Tool							
Miscellaneous Materials							
Gelling Agt	Conc	Surfactant	Conc	Acid Type	Qty	Conc	%
Treatment Fld	Conc	Inhibitor	Conc	Sand Type	Size	Qty	

Fluid Data										
Stage/Plug #: 1										
Fluid #	Stage Type	Fluid Name	Qty	Qty uom	Mixing Density lbm/gal	Yield ft ³ /sk	Mix Fluid Gal/sk	Rate bbl/min	Total Mix Fluid Gal/sk	
1	Water Spacer		20.00	bbl	8.4	.0	.0	8		
2	Lead Cement	VERSACEM (TM) SYSTEM (452010)	160.0	sacks	12.3	2.38	13.75	8		
3	Tail Cement	VERSACEM (TM) SYSTEM (452010)	160.0	sacks	12.8	2.11	11.75	8		
4	Displacement Fluid			bbl	8.4	.0	.0	10		
Calculated Values		Pressures		Volumes						
Displacement	86.8	Shut In: Instant		Lost Returns	NONE	Cement Slurry	127.9	Pad		
Top Of Cement	SURFACE	5 Min		Cement Returns	10	Actual Displacement	86.8	Treatment		
Frac Gradient		15 Min		Spacers	20	Load and Breakdown		Total Job	234.7	
Rates										
Circulating	RIF	Mixing	8	Displacement	10	Avg. Job	9			
Cement Left In Pipe	Amount	44.21 ft	Reason	Shoe Joint						
Frac Ring # 1 @	ID	Frac ring # 2 @	ID	Frac Ring # 3 @	ID	Frac Ring # 4 @	ID			
The Information Stated Herein Is Correct				Customer Representative Signature						

The Road to Excellence Starts with Safety

Sold To #: 300721	Ship To #: 2717658	Quote #:	Sales Order #: 7444692
Customer: WILLIAMS PRODUCTION RMT INC EBUSINE		Customer Rep: KLATT, BRIAN	
Well Name: RWF	Well #: 32-35	API/UWI #: 05-045-18747	
Field: RULISON	City (SAP): RIFLE	County/Parish: Garfield	State: Colorado
Legal Description:			
Lat: N 39.487 deg. OR N 39 deg. 29 min. 13.56 secs.		Long: W 107.853 deg. OR W -108 deg. 8 min. 48.318 secs.	
Contractor: H&P 280		Rig/Platform Name/Num: H&P 280	
Job Purpose: Cement Surface Casing			Ticket Amount:
Well Type: Development Well		Job Type: Cement Surface Casing	
Sales Person: KOHL, KYLE		Srvc Supervisor: CARTER, ERIC	MBU ID Emp #: 345598

Activity Description	Date/Time	Cht #	Rate bbl/min	Volume bbl		Pressure psig		Comments
				Stage	Total	Tubing	Casing	
Call Out	06/24/2010 05:00							
Depart Yard Safety Meeting	06/24/2010 06:20							ATTENDED BY ALL HES CREW
Crew Leave Yard	06/24/2010 06:30							
Arrive At Loc	06/24/2010 08:30							RIG LANDING CASING
Assessment Of Location Safety Meeting	06/24/2010 08:40							ATTENDED BY ALL HES CREW
Other	06/24/2010 08:50							SPOT EQUIPEMENT
Pre-Rig Up Safety Meeting	06/24/2010 09:00							ATTENDED BY ALL HES CREW
Rig-Up Equipment	06/24/2010 09:10							
Pre-Job Safety Meeting	06/24/2010 09:50							ATTENDED BY ALL HES CREW, RIG CREW AND COMPANY REP.RIG CIRCULATED FOR 1 HR PRIOR TO JOB.
Start Job	06/24/2010 10:16							TP 1147', TD 1162', SJ 44.21', FC 1102.79', MW 10.5 PPG, CASING 9.625", 32.3#, H-40, HOLE 13.5"
Other	06/24/2010 10:16							PRIMED LINES
Test Lines	06/24/2010 10:19							PRESSURED UP TO 2890 PSI, PRESSURE HELD
Pump Spacer 1	06/24/2010 10:21		8	20	20		500.0	FRESH WATER
Pump Lead Cement	06/24/2010 10:28		8	67.8	87.8		690.0	160 SKS MIXED AT 12.3 PPG, 2.38 YIELD, 13.75 GL/SK

Sold To # : 300721

Ship To # :2717658

Quote # :

Sales Order # : 7444692

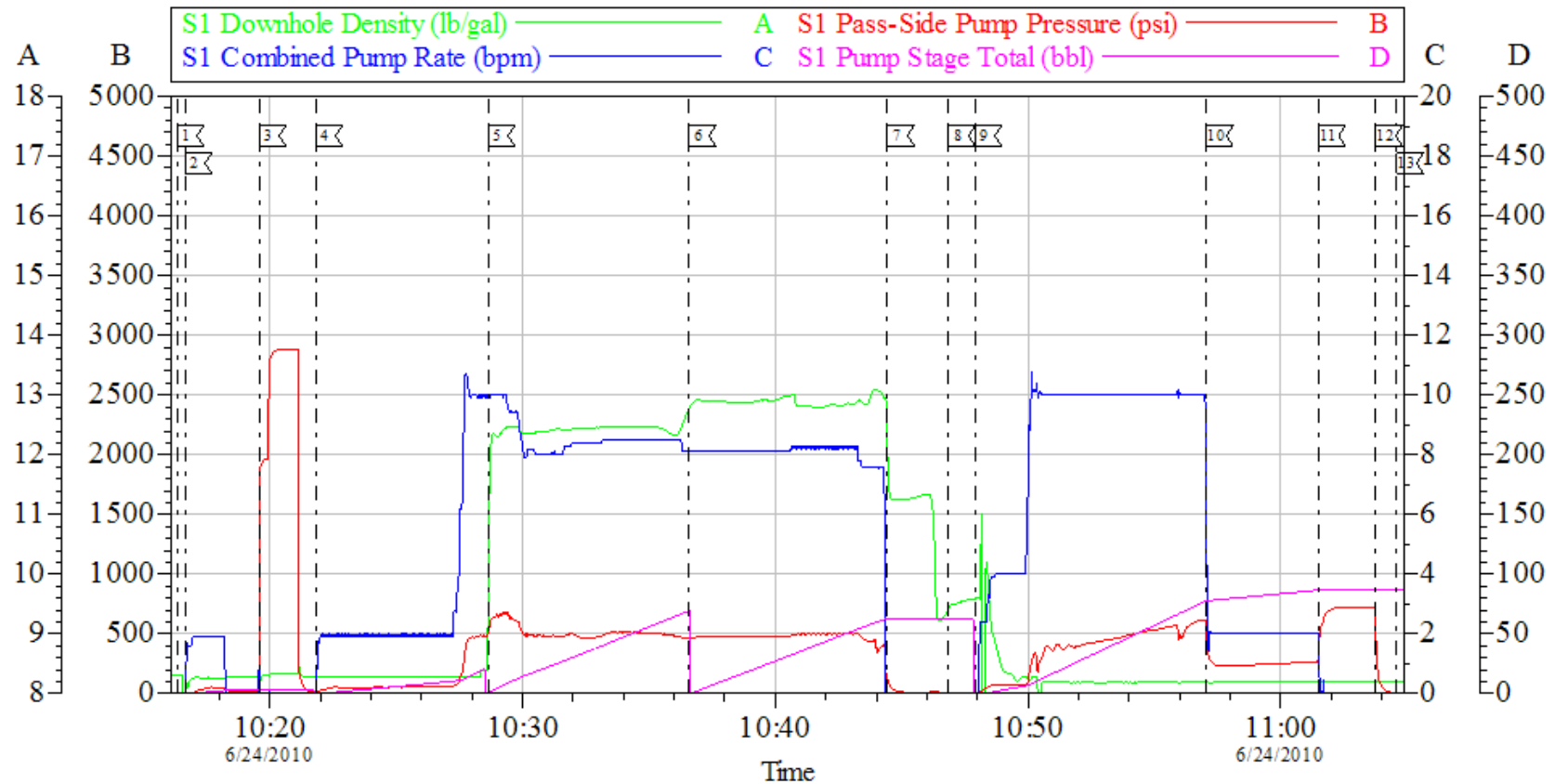
SUMMIT Version: 7.20.130

Thursday, June 24, 2010 11:34:00

Activity Description	Date/Time	Cht #	Rate bbl/ min	Volume bbl		Pressure psig		Comments
				Stage	Total	Tubing	Casing	
Pump Tail Cement	06/24/2010 10:36		8	60.1	147.9		500.0	160 SKS MIXED AT 12.8 PPG, 2.11 YIELD, 11.75 GL/SK
Shutdown	06/24/2010 10:44							
Drop Top Plug	06/24/2010 10:46							COMPANY REP VERIFIED THAT PLUG LAUNCHED
Pump Displacement	06/24/2010 10:47		10	76.8	224.7		610.0	FRESH WATER, WASHED UP ON TOP OF PLUG AT COMPANY REP'S REQUEST
Slow Rate	06/24/2010 10:57		2	10	234.7		260.0	
Bump Plug	06/24/2010 11:01						723.0	PLUG LANDED
Check Floats	06/24/2010 11:03							FLOATS HELD
End Job	06/24/2010 11:04							GOOD CIRCULATION THROUGH OUT JOB, 10 BBLS CEMENT TO SURFACE, PIPE WAS MOVED DURING CEMENT
Post-Job Safety Meeting (Pre Rig-Down)	06/24/2010 11:10							ATTENDED BY ALL HES CREW
Rig-Down Equipment	06/24/2010 11:20							
Depart Location Safety Meeting	06/24/2010 11:50							ATTENDED BY ALL HES CREW
Crew Leave Location	06/24/2010 12:00							THANK YOU FOR USING HALLIBURTON CEMENT, ERIC CARTER AND CREW.

WILLIAMS PRODUCTION RMT

9.625" SURFACE/RWF 32-35



Local Event Log

1 STARTJOB	10:16:20	2 PRIME LINES	10:16:38	3 TEST LINES	10:19:35
4 PUMP H2O SPACER	10:21:49	5 PUMP LEAD CEMENT	10:28:38	6 PUMP TAIL CEMENT	10:36:35
7 SHUTDOWN	10:44:26	8 DROP TOP PLUG	10:46:51	9 PUMP H2O DISPLACEMENT	10:47:53
10 SLOWRATE	10:57:04	11 BUMP PLUG	11:01:30	12 CHECK FLOATS	11:03:45
13 END JOB	11:04:35				

Customer: WILLIAMS PRODUCTION RMT INC EBUSINE
Well Description: RWF 32-35
Company Rep: BRIAN KLATT

Job Date: 24-Jun-2010
Job Type: 9.625" SURFACE
Cement Supervisor: ERIC CARTER

Sales Order #: 7444692
ADC Used: YES
Elite #/Operator: 11/BEN STEELE

OptiCem v6.4.0
24-Jun-10 11:11