

---

**WILLIAMS PRODUCTION RMT INC EBUSINE**

---

**RWF 32-35  
RULISON  
Garfield County , Colorado**

**Cement Production Casing**  
**30-Jun-2010**

**Post Job Report**

## The Road to Excellence Starts with Safety

Sold To #: 300721		Ship To #: 2790350		Quote #:		Sales Order #: 7445298	
Customer: WILLIAMS PRODUCTION RMT INC EBUSINE				Customer Rep: WILSON, W.C.			
Well Name: RWF			Well #: 32-35		API/UWI #: 05-045-18747		
Field: RULISON		City (SAP): RIFLE		County/Parish: Garfield		State: Colorado	
Lat: N 39.487 deg. OR N 39 deg. 29 min. 13.56 secs.				Long: W 107.853 deg. OR W -108 deg. 8 min. 48.318 secs.			
Contractor: H&P 280			Rig/Platform Name/Num: H&P 280				
Job Purpose: Cement Production Casing							
Well Type: Development Well			Job Type: Cement Production Casing				
Sales Person: KOHL, KYLE			Srvc Supervisor: CARTER, ERIC			MBU ID Emp #: 345598	

### Job Personnel

HES Emp Name	Exp Hrs	Emp #	HES Emp Name	Exp Hrs	Emp #	HES Emp Name	Exp Hrs	Emp #
BANKS, BRENT A	7	371353	CARTER, ERIC Earl	7	345598	CUNNINGHAM, TANNER Wade	7	445660
STEELE, BENJAMIN F	7	458599						

### Equipment

HES Unit #	Distance-1 way	HES Unit #	Distance-1 way	HES Unit #	Distance-1 way	HES Unit #	Distance-1 way
10784080	60 mile	10804579	60 mile	10872429	60 mile	10951251	60 mile
11360883	60 mile						

### Job Hours

Date	On Location Hours	Operating Hours	Date	On Location Hours	Operating Hours	Date	On Location Hours	Operating Hours
6/30/10	7	1.5						

<b>TOTAL</b>	Total is the sum of each column separately							
--------------	--	--	--	--	--	--	--	--

### Job

Formation Name							Date	Time	Time Zone	
Formation Depth (MD)	Top	1145..4 FT.		Bottom	7710 FT.	Called Out	29 - Jun - 2010	20:30	CST	
Form Type				BHST		On Location	30 - Jun - 2010	00:30	CST	
Job depth MD	7710. ft			Job Depth TVD		7710. ft	Job Started	30 - Jun - 2010	04:40	CST
Water Depth				Wk Ht Above Floor		5. ft	Job Completed	30 - Jun - 2010	05:51	CST
Perforation Depth (MD)	From			To			Departed Loc	30 - Jun - 2010	07:30	CST

### Well Data

Description	New / Used	Max pressure psig	Size in	ID in	Weight lbm/ft	Thread	Grade	Top MD ft	Bottom MD ft	Top TVD ft	Bottom TVD ft
OPEN HOLE				7.875				1145.4	7710.		
PRODUCTION CASING	Unknown		4.5	4.	11.6		N-80	.	7694.9		
SURFACE CASING	Unknown		9.625	9.001	32.3		J-55	.	1145.4		

### Sales/Rental/3<sup>rd</sup> Party (HES)

Description	Qty	Qty uom	Depth	Supplier
PLUG,CMTG,TOP,4 1/2,HWE,3.65 MIN/4.14 MA	1	EA		
R/A DENSOMETER W/CHART RECORDER,/JOB,ZI	1	JOB		
PORT. DAS W/CEMWIN;ACQUIRE W/HES, ZI	1	JOB		
ADC (AUTO DENSITY CTRL) SYS, /JOB,ZI	1	JOB		

### Tools and Accessories

Type	Size	Qty	Make	Depth	Type	Size	Qty	Make	Depth	Type	Size	Qty	Make
Guide Shoe					Packer					Top Plug	4.5"	1	
Float Shoe					Bridge Plug					Bottom Plug			
Float Collar					Retainer					SSR plug set			
Insert Float										Plug Container	4.5"	1	
Stage Tool										Centralizers			

Miscellaneous Materials													
Gelling Agt		Conc		Surfactant		Conc		Acid Type		Qty		Conc	%
Treatment Fld		Conc		Inhibitor		Conc		Sand Type		Size		Qty	
Fluid Data													
Stage/Plug #: 1													
Fluid #	Stage Type	Fluid Name			Qty	Qty uom	Mixing Density lbm/gal	Yield ft3/sk	Mix Fluid Gal/sk	Rate bbl/min	Total Mix Fluid Gal/sk		
1	Water Spacer				10.00	bbl	8.4	.0	.0	8			
2	VariCem Tail Slurry	VARICEM (TM) CEMENT (452009)			1020.0	sacks	14.2	1.33	5.79	8	5.79		
	5.79 Gal	FRESH WATER											
3	KCL Displacement Fluid					bbl	8.4	.0	.0	10			
	7.7 lbm/bbl	POTASSIUM CHLORIDE 7% (100001585)											
Calculated Values		Pressures			Volumes								
Displacement	118.8	Shut In: Instant			Lost Returns	NONE	Cement Slurry		241.6	Pad			
Top Of Cement		5 Min			Cement Returns	0	Actual Displacement		118.8	Treatment			
Frac Gradient		15 Min			Spacers	10	Load and Breakdown			Total Job	370.4		
Rates													
Circulating	RIG	Mixing		8	Displacement	10		Avg. Job		9			
Cement Left In Pipe	Amount	28.9 ft	Reason	Shoe Joint									
Frac Ring # 1 @	ID		Frac ring # 2 @	ID		Frac Ring # 3 @	ID		Frac Ring # 4 @	ID			
The Information Stated Herein Is Correct					Customer Representative Signature								

*The Road to Excellence Starts with Safety*

<b>Sold To #:</b> 300721		<b>Ship To #:</b> 2790350		<b>Quote #:</b>		<b>Sales Order #:</b> 7445298	
<b>Customer:</b> WILLIAMS PRODUCTION RMT INC EBUSINE				<b>Customer Rep:</b> WILSON, W.C.			
<b>Well Name:</b> RWF			<b>Well #:</b> 32-35			<b>API/UWI #:</b> 05-045-18747	
<b>Field:</b> RULISON		<b>City (SAP):</b> RIFLE		<b>County/Parish:</b> Garfield		<b>State:</b> Colorado	
<b>Legal Description:</b>							
<b>Lat:</b> N 39.487 deg. OR N 39 deg. 29 min. 13.56 secs.				<b>Long:</b> W 107.853 deg. OR W -108 deg. 8 min. 48.318 secs.			
<b>Contractor:</b> H&P 280			<b>Rig/Platform Name/Num:</b> H&P 280				
<b>Job Purpose:</b> Cement Production Casing						<b>Ticket Amount:</b>	
<b>Well Type:</b> Development Well			<b>Job Type:</b> Cement Production Casing				
<b>Sales Person:</b> KOHL, KYLE			<b>Srv Supervisor:</b> CARTER, ERIC			<b>MBU ID Emp #:</b> 345598	

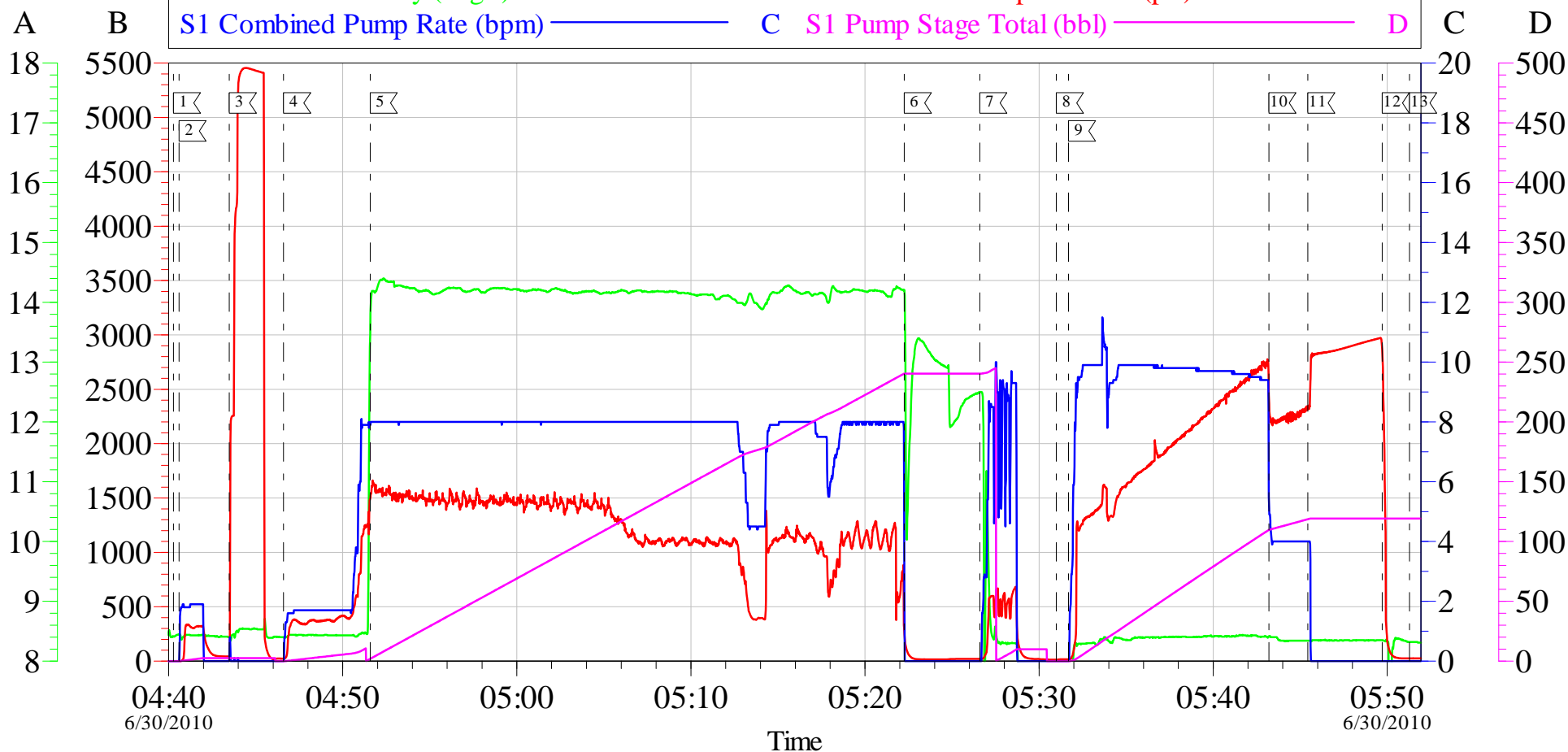
Activity Description	Date/Time	Cht #	Rate bbl/min	Volume bbl		Pressure psig		Comments
				Stage	Total	Tubing	Casing	
Call Out	06/29/2010 20:30							
Depart Yard Safety Meeting	06/29/2010 22:20							ATTENDED BY ALL HES CREW
Crew Leave Yard	06/29/2010 22:30							
Arrive At Loc	06/30/2010 00:30							RIG RUNNING CASING
Assessment Of Location Safety Meeting	06/30/2010 00:40							ATTENDED BY ALL HES CREW
Other	06/30/2010 02:30							SPOT EQUIPMENT
Pre-Rig Up Safety Meeting	06/30/2010 02:50							ATTENDED BY ALL HES CREW
Rig-Up Equipment	06/30/2010 03:00							
Pre-Job Safety Meeting	06/30/2010 04:20							ATTENDED BY ALL HES CREW, RIG CREW AND COMPANY REP, RIG CIRCULATED FOR 3 HR'S PRIOR TO JOB
Other	06/30/2010 04:40							PRIME LINES
Start Job	06/30/2010 04:40							TP 7694.9', TD 7710', SJ 28.9', FC 7666', MW 13.9', CASING 4.5", 11.6#, E-80, HOLE 7.875", SURFACE CASING 9.625", 32.3# SET AT 1145.4', 4.5" HEAD # D0754
Test Lines	06/30/2010 04:43							PRESSURED UP TO 5450 PSI, PRESSURE HELD
Pump Spacer 1	06/30/2010 04:46		8	10	10		1500.0	FRESH WATER

Activity Description	Date/Time	Cht #	Rate bbl/ min	Volume bbl		Pressure psig		Comments
				Stage	Total	Tubing	Casing	
Pump Tail Cement	06/30/2010 04:51		8	241.6	251.6		1490. 0	1020 SKS MIXED AT 14.2 PPG, 1.33 YIELD, 5.79 GL/SK
Shutdown	06/30/2010 05:22							
Clean Lines	06/30/2010 05:26							CLEANED LINES TO PIT
Drop Top Plug	06/30/2010 05:30							COMPANY REP VERIFIED THAT PLUG LAUNCHED
Pump Displacement	06/30/2010 05:31		10	108.8	360.4		2760. 0	KCL DISPLACEMENT
Slow Rate	06/30/2010 05:43		4	10	370.4		2290. 0	
Bump Plug	06/30/2010 05:45						2980. 0	PLUG LANDED
Check Floats	06/30/2010 05:49							FLOATS HELD
End Job	06/30/2010 05:51							GOOD CIRCULATION THROUGH OUT JOB, 0 BBLs CEMENT TO SURFACE, PIPE WAS MOVED DURING CEMENT
Post-Job Safety Meeting (Pre Rig-Down)	06/30/2010 06:00							ATTENDED BY ALL HES CREW
Rig-Down Equipment	06/30/2010 06:10							
Depart Location Safety Meeting	06/30/2010 07:20							ATTENDED BY ALL HES CREW
Crew Leave Location	06/30/2010 07:30							THANK YOU FOR USING HALLIBURTON CEMENT, ERIC CARTER AND CREW

# WILLIAMS PRODUCTION RMT

## 4.5" PRODUCTION/RWF 32-35

S1 Downhole Density (lb/gal) A S1 Pass-Side Pump Pressure (psi) B S1 Combined Pump Rate (bpm) C S1 Pump Stage Total (bbl)



### Local Event Log

1 START JOB	04:40:17	2 PRIME LINES	04:40:36	3 TEST LINES	04:43:29
4 PUMP H2O SPACER	04:46:36	5 PUMP TAIL CEMENT	04:51:35	6 SHUTDOWN	05:22:16
7 CLEAN LINES	05:26:36	8 DROP TOP PLUG	05:30:59	9 PUMP KCL DISPLACEMENT	05:31:42
10 SLOW RATE	05:43:12	11 BUMP PLUG	05:45:26	12 CHECK FLOATS	05:49:42
13 END JOB	05:51:17				

Customer: WILLIAMS PRODUCTION RMT INC EBUSINE  
 Well Description: RWF 32-35  
 Company Rep: CUB

Job Date: 30-Jun-2010  
 Job Type: 4.5" PRODUCTION  
 Cement Supervisor: ERIC CARTER

Sales Order #: 7445298  
 ADC Used: YES  
 Elite #/Operator: 11/BEN STEELE

OptiCem v6.4.0  
 30-Jun-10 06:16