

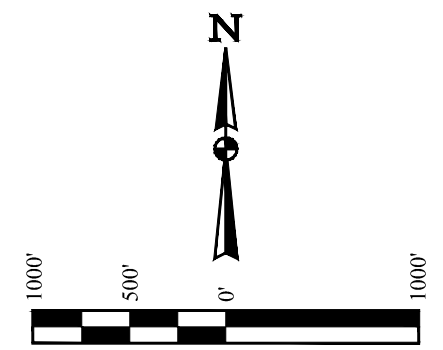
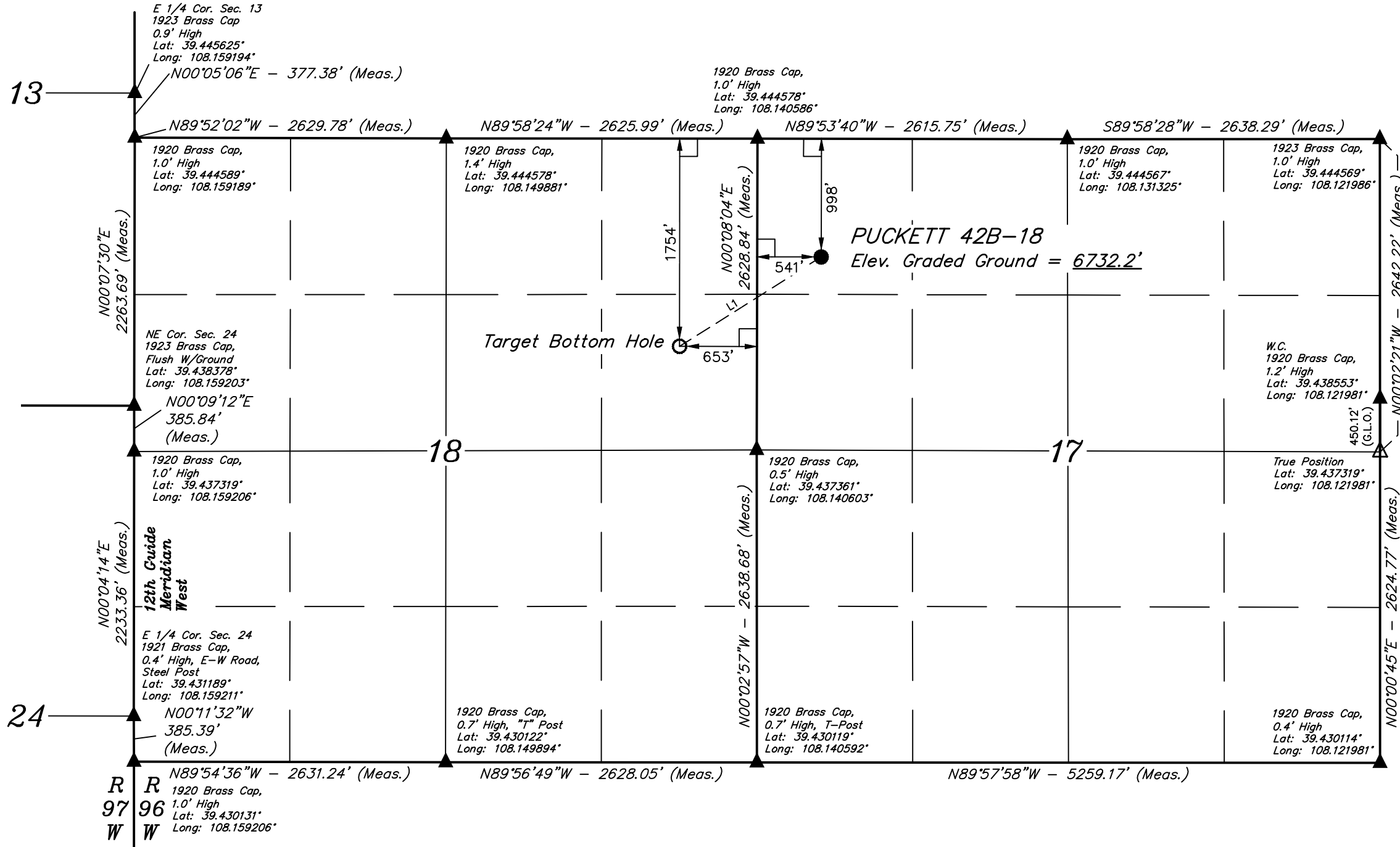
T7S, R96W, 6th P.M.

Caerus Oil & Gas LLC

PUCKETT 42B-18
NW 1/4 NW 1/4, SECTION 17, T7S, R96W, 6th P.M.
GARFIELD COUNTY, COLORADO

BASIS OF BEARINGS IS A G.P.S. OBSERVATION
BASIS OF ELEVATION

SPOT ELEVATION AT THE NORTHWEST CORNER OF SECTION 30, T5S, R95W, 6th P.M., TAKEN FROM THE FORKED GULCH QUADRANGLE, GARFIELD COUNTY, COLORADO, 7.5 MINUTE QUAD. (TOPOGRAPHIC MAP) PUBLISHED BY THE UNITED STATES DEPARTMENT OF THE INTERIOR, GEOLOGICAL SURVEY. SAID ELEVATION IS MARKED AS BEING 5966 FEET.



R 97 W
R 96 W

LINE TABLE		
LINE	DIRECTION	LENGTH
L1	S57°44'48"W	1413.45'

PDOP = 3.1

- LEGEND:**
- └─┘ = 90° SYMBOL
 - = PROPOSED WELLHEAD.
 - = TARGET BOTTOM HOLE.
 - ▲ = SECTION CORNERS LOCATED. (NAD 83)
 - △ = SECTION CORNERS RE-ESTABLISHED. (Not Set on Ground.) (NAD 83)

NAD 83 (TARGET BOTTOM HOLE)	NAD 83 (SURFACE LOCATION)
LATITUDE = 39°26'23.15" (39.439764)	LATITUDE = 39°26'30.60" (39.441833)
LONGITUDE = 108°08'34.47" (108.142908)	LONGITUDE = 108°08'19.24" (108.138678)
NAD 27 (TARGET BOTTOM HOLE)	NAD 27 (SURFACE LOCATION)
LATITUDE = 39°26'23.22" (39.439783)	LATITUDE = 39°26'30.68" (39.441856)
LONGITUDE = 108°08'32.19" (108.142275)	LONGITUDE = 108°08'16.96" (108.138044)
UTM NAD 27 (ZONE 12)	UTM NAD 27 (ZONE 12)
N: 14334850.00 E: 2447313.10	N: 14335642.30 E: 2448483.70

CERTIFICATE OF ACCURACY
THIS IS TO CERTIFY THAT THE ABOVE PLAT WAS PREPARED FROM FIELD NOTES OF ACTUAL SURVEYS MADE BY ME OR UNDER MY SUPERVISION AND THAT THE SAME ARE TRUE AND CORRECT TO THE BEST OF MY KNOWLEDGE AND BELIEF.

Handwritten Signature
REGISTERED LAND SURVEYOR
REGISTRATION NO. 19180
STATE OF COLORADO
38130
PROFESSIONAL LAND SURVEYOR

UINTEAH
ENGINEERING & LAND SURVEYING

UELS, LLC
Corporate Office * 85 South 200 East
Vernal, UT 84078 * (435) 789-1017

SURVEYED BY: BRIAN BAKER, B.B. DATE: 08-17-15
DRAWN BY: T.B. DATE DRAWN: 01-06-16
SCALE: 1" = 1000' REVISED: 00-00-00

WELL LOCATION PLAT